

LEGEND:

● PROPOSED LOCATION



UELS, LLC
 Corporate Office * 85 South 200 East
 Vernal, UT 84078 * (435) 789-1017



BILL BARRETT CORPORATION

ANSCHUTZ EQUUS FARMS 4-62-28_27 NWSW PAD
 #4-62-29-4148B2, 4148C2, 4033B2, 4033D2, 4033C2,
 #4-62-28-4841D2, 4841B2, 4841C2, 3340B2 & 3225C2
 NW 1/4 SW 1/4, SECTION 28, T4N, R62W, 6th P.M.
 WELD COUNTY, COLORADO

DRAWN BY: J.L.G.

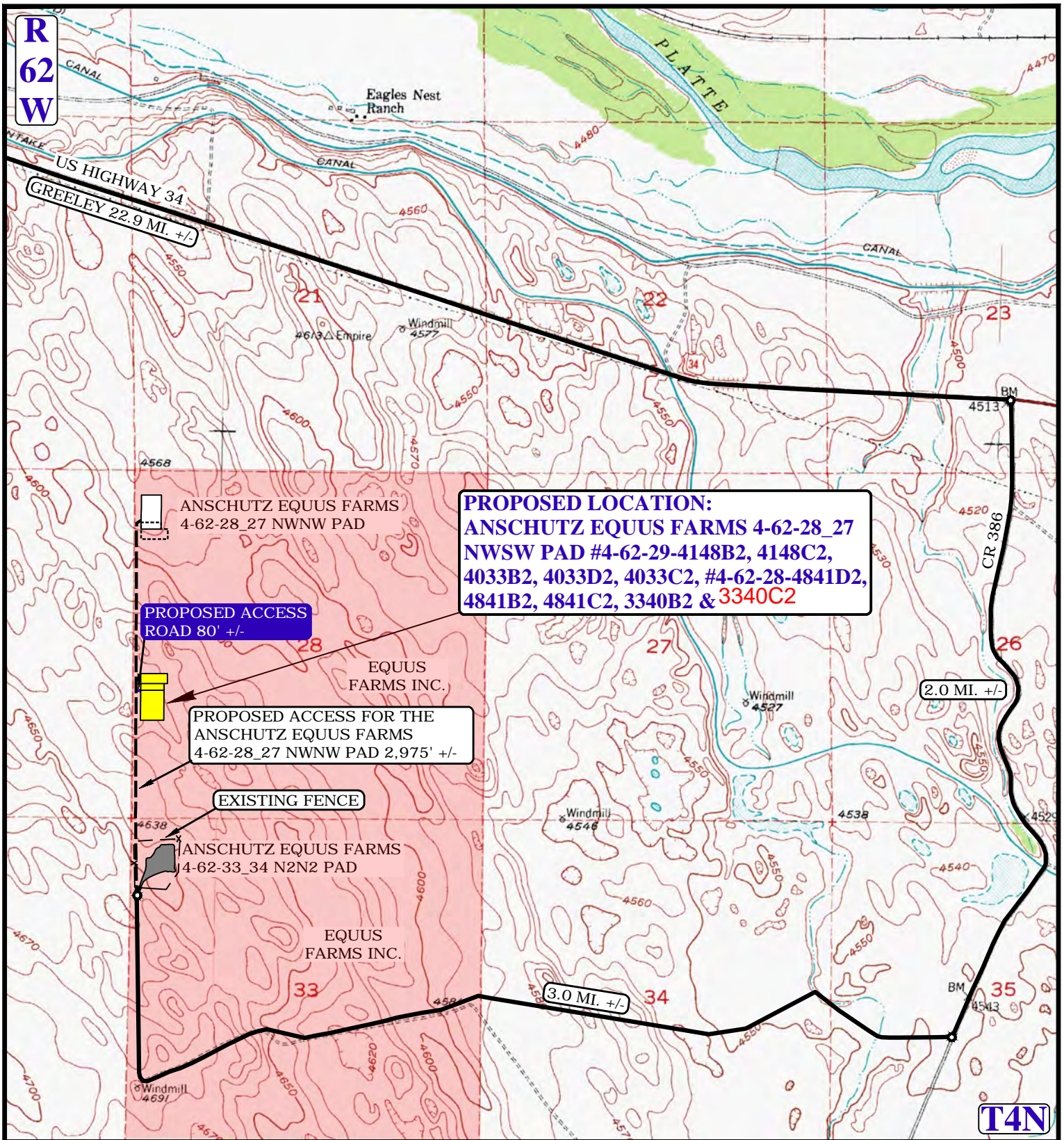
DATE DRAWN: 04-21-15

SCALE: 1:100,000

REV: 09-23-15

ACCESS ROAD MAP

TOPO A



NOTE: PARCEL DATA SHOWN HAS BEEN OBTAINED FROM VARIOUS SOURCES AND SHOULD BE USED FOR MAPPING, GRAPHIC AND PLANNING PURPOSES ONLY. NO WARRANTY IS MADE BY UINTAH ENGINEERING AND LAND SURVEYING (UELS) FOR ACCURACY OF THE PARCEL DATA.

LEGEND:

- EXISTING ROAD
- - - PROPOSED ROAD
- x x EXISTING FENCE
- - - PROPOSED ROAD (SERVICING OTHER WELLS)

BILL BARRETT CORPORATION

ANSCHUTZ EQUUS FARMS 4-62-28_27 NWSW PAD
#4-62-29-4148B2, 4148C2, 4033B2, 4033D2, 4033C2,
#4-62-28-4841D2, 4841B2, 4841C2, 3340B2 & 3340C2
NW 1/4 SW 1/4, SECTION 28, T4N, R62W, 6th P.M.
WELD COUNTY, COLORADO

DRAWN BY: J.L.G.

DATE DRAWN: 04-21-15

SCALE: 1"=2000'

REV: 09-23-15

ACCESS ROAD MAP

TOPO B



UELS, LLC
Corporate Office * 85 South 200 East
Vernal, UT 84078 * (435) 789-1017



PROCEED IN AN EASTERLY, THEN SOUTHEASTERLY DIRECTION FROM GREELEY, COLORADO ALONG U.S. HIGHWAY 34 APPROXIMATELY 22.9 MILES TO THE JUNCTION OF THIS ROAD AND COUNTY ROAD 386 TO THE SOUTH; TURN RIGHT AND PROCEED IN A SOUTHERLY DIRECTION APPROXIMATELY 2.0 MILES TO THE JUNCTION OF THIS ROAD AND AN EXISTING ROAD TO THE WEST; TURN RIGHT AND PROCEED IN A WESTERLY, THEN NORTHERLY DIRECTION APPROXIMATELY 3.0 MILES TO THE BEGINNING OF THE PROPOSED ACCESS ROAD FOR THE ANSCHUTZ EQUUS FARMS 4-62-28_27 NWNW PAD TO THE NORTH; FOLLOW ROAD FLAGS IN A NORTHERLY DIRECTION APPROXIMATELY 2,975' TO THE BEGINNING OF THE PROPOSED ACCESS ROAD TO THE WEST; FOLLOW ROAD FLAGS IN A WESTERLY DIRECTION APPROXIMATELY 80' TO THE PROPOSED LOCATION.

TOTAL DISTANCE FROM GREELEY, COLORADO TO THE PROPOSED LOCATION IS APPROXIMATELY 28.5 MILES.

BILL BARRETT CORPORATION

ANSCHUTZ EQUUS FARMS 4-62-28_27 NWSW PAD
#4-62-29-4148B2, 4148C2, 4033B2, 4033D2, 4033C2,
#4-62-28-4841D2, 4841B2, 4841C2, 3340B2 & 3225C2
NW 1/4 SW 1/4, SECTION 28, T4N, R62W, 6th P.M.
WELD COUNTY, COLORADO



UELS, LLC
Corporate Office * 85 South 200 East
Vernal, UT 84078 * (435) 789-1017

DRAWN BY: J.L.G.

DATE DRAWN: 04-21-15

REV: 09-23-15

ROAD DESCRIPTION