

T4N, R62W, 6th P.M.

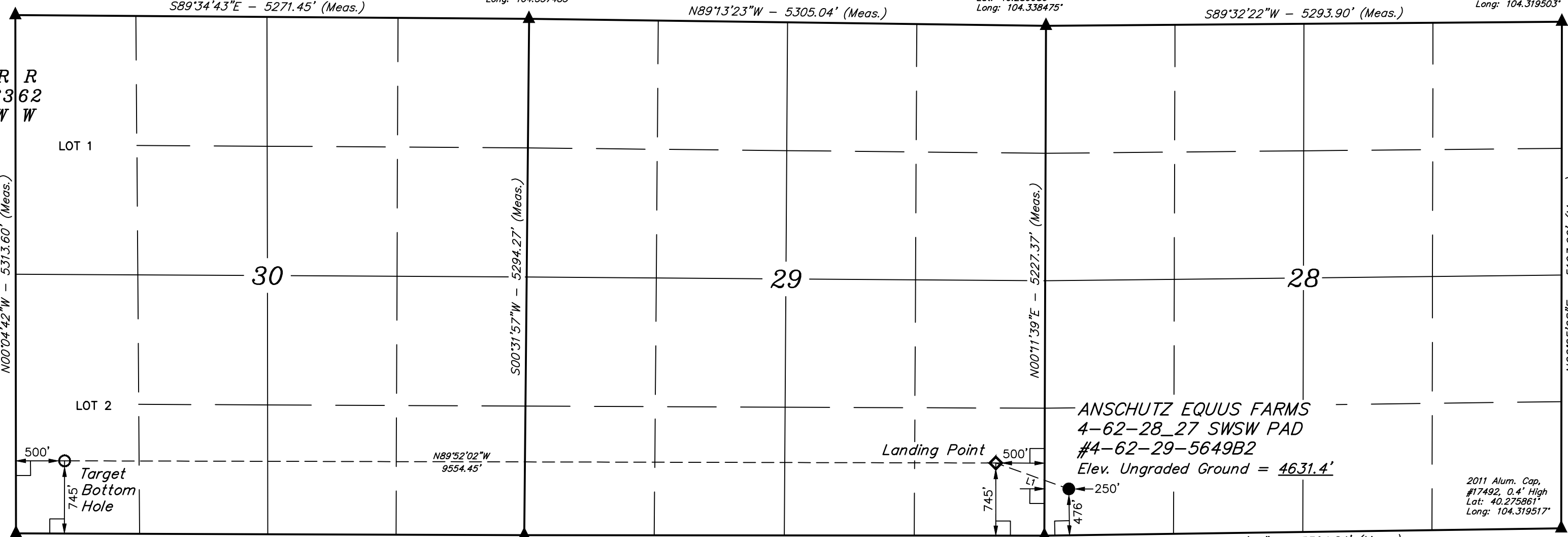
BILL BARRETT CORPORATION  
ANSCHUTZ EQUUS FARMS 4-62-28\_27 SWSW PAD  
#4-62-29-5649B2  
SW 1/4 SW 1/4, SECTION 28, T4N, R62W, 6th P.M.  
WELD COUNTY, COLORADO

2012 Alum. Cap,  
#34995, 0.2' High,  
N/S/E/W Fence Corner  
Lat: 40.290258°  
Long: 104.376375°

2011 Alum. Cap,  
0.3' High  
Lat: 40.290169°  
Long: 104.357483°

2011 Alum. Cap,  
0.3' High  
Lat: 40.289986°  
Long: 104.338475°

2011 Alum. Cap,  
#17492, 0.3' High  
Lat: 40.290114°  
Long: 104.319503°

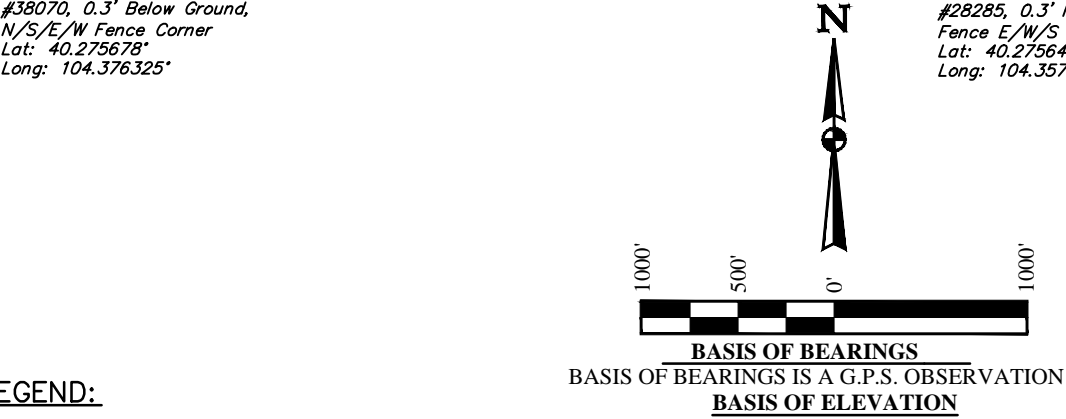


2011 Alum. Cap,  
#38070, 0.3' Below Ground,  
N/S/E/W Fence Corner  
Lat: 40.275678°  
Long: 104.376325°

2013 Alum. Cap,  
#28285, 0.3' High,  
Fence E/W/S  
Lat: 40.275642°  
Long: 104.357639°

2014 Alum. Cap,  
#28285, 0.4' High,  
In Line With East Fence  
Lat: 40.275642°  
Long: 104.338522°

2011 Alum. Cap,  
#17492, 0.4' High  
Lat: 40.275861°  
Long: 104.319517°



LINE TABLE		
LINE	DIRECTION	LENGTH
L1	N70°26'40"W	794.93'

CERTIFICATE  
THIS IS TO CERTIFY THAT THE ABOVE PLAT WAS PREPARED FROM FIELD NOTES OF ACTUAL SURVEYS MADE BY ME OR UNDER MY SUPERVISION, AND THAT THE SAME ARE TRUE AND CORRECT TO THE BEST OF MY KNOWLEDGE AND BELIEF.

REGISTERED LAND SURVEYOR  
REGISTRATION NO. 28285  
STATE OF COLORADO 09-09-15

PDOP = 1.6

NAD 83 (TARGET BOTTOM HOLE)	NAD 83 (LANDING POINT)	NAD 83 (SURFACE LOCATION)
LATITUDE = 40°16'39.78" (40.277717)	LATITUDE = 40°16'39.67" (40.277686)	LATITUDE = 40°16'37.05" (40.276958)
LONGITUDE = 104°22'28.35" (104.374542)	LONGITUDE = 104°20'25.10" (104.340306)	LONGITUDE = 104°20'15.44" (104.337622)
NAD 27 (TARGET BOTTOM HOLE)	NAD 27 (LANDING POINT)	NAD 27 (SURFACE LOCATION)
LATITUDE = 40°16'39.85" (40.277736)	LATITUDE = 40°16'39.74" (40.277706)	LATITUDE = 40°16'37.11" (40.276975)
LONGITUDE = 104°22'26.51" (104.374031)	LONGITUDE = 104°20'23.27" (104.339797)	LONGITUDE = 104°20'13.61" (104.337114)
STATE PLANE NAD 83 (CO. NORTH)	STATE PLANE NAD 83 (CO. NORTH)	STATE PLANE NAD 83 (CO. NORTH)
N: 1346006.69 E: 3314009.05	N: 1346117.96 E: 3323560.34	N: 1345862.43 E: 3324312.87
STATE PLANE NAD 27 (CO. NORTH)	STATE PLANE NAD 27 (CO. NORTH)	STATE PLANE NAD 27 (CO. NORTH)
N: 346009.30 E: 2314159.38	N: 346120.64 E: 2323710.68	N: 345865.12 E: 2324463.20



UELS, LLC  
Corporate Office \* 85 South 200 East  
Vernal, UT 84078 \* (435) 789-1017

SURVEYED BY: GREG WEIMER, C.J.		DATE: 09-09-15
DRAWN BY: K.B.		DATE DRAWN: 09-23-15
SCALE: 1" = 1000'		REVISED: 00-00-00

WELL LOCATION PLAT

- LEGEND:
- = 90° SYMBOL
  - = PROPOSED WELLHEAD.
  - = TARGET BOTTOM HOLE.
  - = LANDING POINT.
  - = SECTION CORNERS LOCATED.

SPOT ELEVATION LOCATED AT THE NORTHEAST CORNER OF SECTION 24, T5N, R62W, 6th P.M. TAKEN FROM THE POINT OF ROCKS, QUADRANGLE, COLORADO, WELD COUNTY, 7.5 MINUTE QUAD (TOPOGRAPHIC MAP) PUBLISHED BY THE UNITED STATES DEPARTMENT OF THE INTERIOR, GEOLOGICAL SURVEY. SAID ELEVATION IS MARKED AS BEING 4530 FEET.