

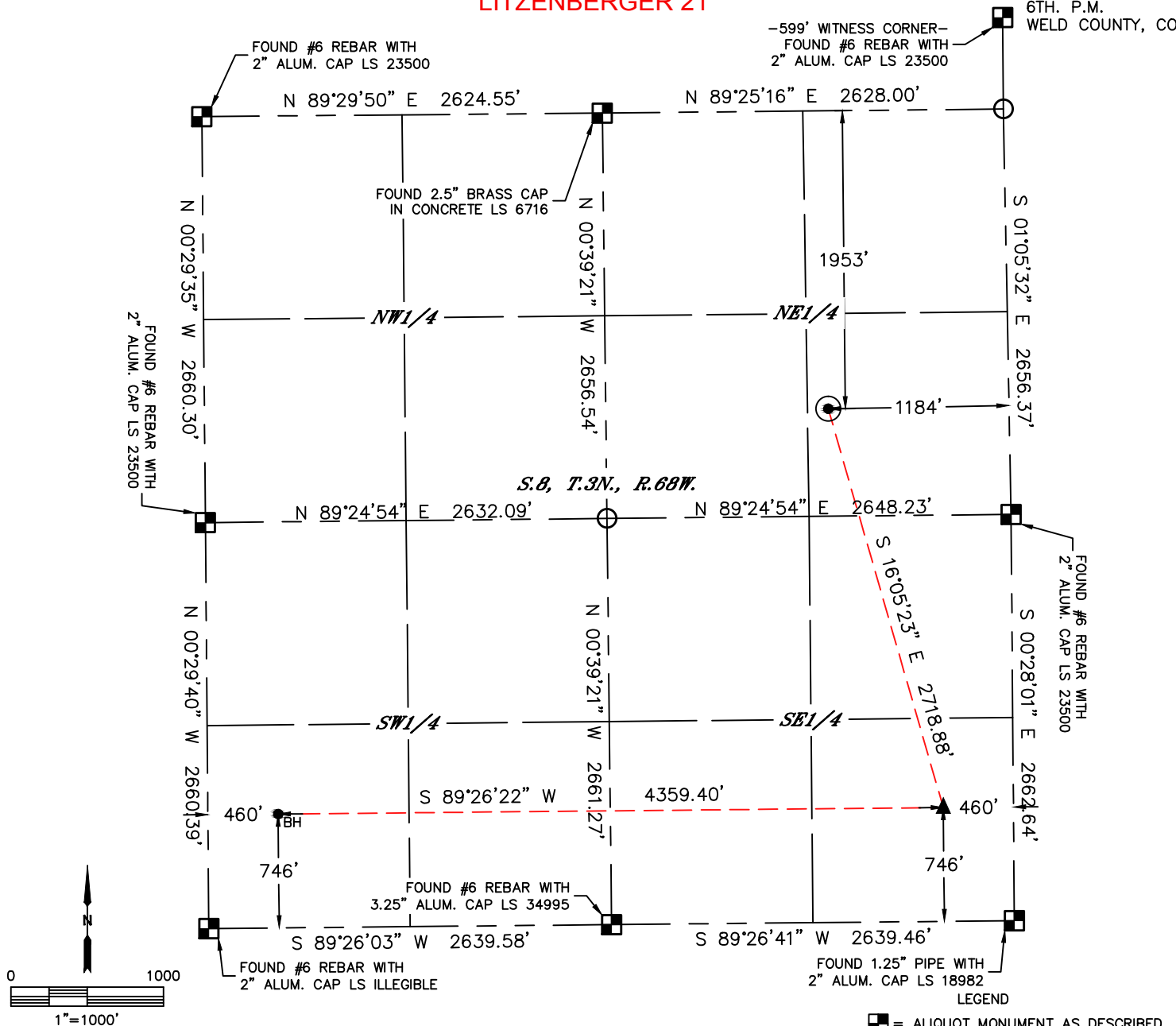


Lat40°, Inc. 6250 W. 10th Street, Unit 2, Greeley, CO 970-515-5294

# WELL LOCATION CERTIFICATE

LITZENBERGER 21

SECTION: 8  
TOWNSHIP: 3N  
RANGE: 68W  
6TH. P.M.  
WELD COUNTY, CO



CLIENT: CUB CREEK ENERGY, LLC					LANDMAN: BOB GARDNER				
INSTRUMENT OPERATOR: BRIAN ROTTINGHAUS					SURVEY DATE: 5/14/2015		SURFACE USE: CROP LAND		
SHL FOOTAGE				SHL LAT°	SHL LONG°	SHL PDOP	SHL ELEV	SHL 1/4/1/4	SHL S-T-R
1953	FNL	1184	FEL	40.24226	-105.02183	1.5	5082	SENE	8-3-68

BHL FOOTAGE				BHL LAT °	BHL LONG °	BHL S-T-R	EP LAT °	EP LONG °	EP S-T-R
746	FSL	460	FWL	40.23503	-105.03480	8-3-68	40.23508	-105.01919	8-3-68

NEAREST CULTURAL ITEMS	
BUILDING	±476' NE
BUILDING UNIT	±561' NE
HIGH OCCUPANCY BUILDING UNIT	±4011' SE
DESIGNATED OUTSIDE ACTIVITY AREA	5280' +
PUBLIC ROAD (COUNTY ROAD 34.75)	±625' N
ABOVE GROUND UTILITY	±518' NE
RAILROAD	5280' +
PROPERTY LINE	±625' N

NOTE:  
1) Bearings shown are Grid Bearings of the Colorado State Plane Coordinate System, North Zone, North American Datum 1983. The lineal dimensions as contained herein are based upon the "U.S. Survey Foot."  
2) Distances to section lines measured at 90 degrees from said section lines.  
3) Ground elevations are based on an observed GPS elevation (NAVD 1988 DATUM).  
4) Latitude and Longitude shown are (NAD 83 DATUM).  
5) IMPROVEMENTS: See LOCATION DRAWING for all visible improvements within 500' of oil and gas location.  
6) This map does not represent a boundary survey.

- LEGEND
- = ALIQUOT MONUMENT AS DESCRIBED
  - = CALCULATED POSITION
  - = SURFACE HOLE LOCATION (SHL)
  - ▲ = ENTRY POINT LOCATION (EP)
  - BH = BOTTOM HOLE LOCATION (BHL)
  - ⊙ = EXISTING WELL
  - ⊙ = ABANDONED WELL



Brian T. Brinkman—On behalf of Lat40°, Inc.  
Colorado Licensed Professional Land Surveyor No. 38175  
DATE: 6/17/2015  
PROJECT#: 2015065

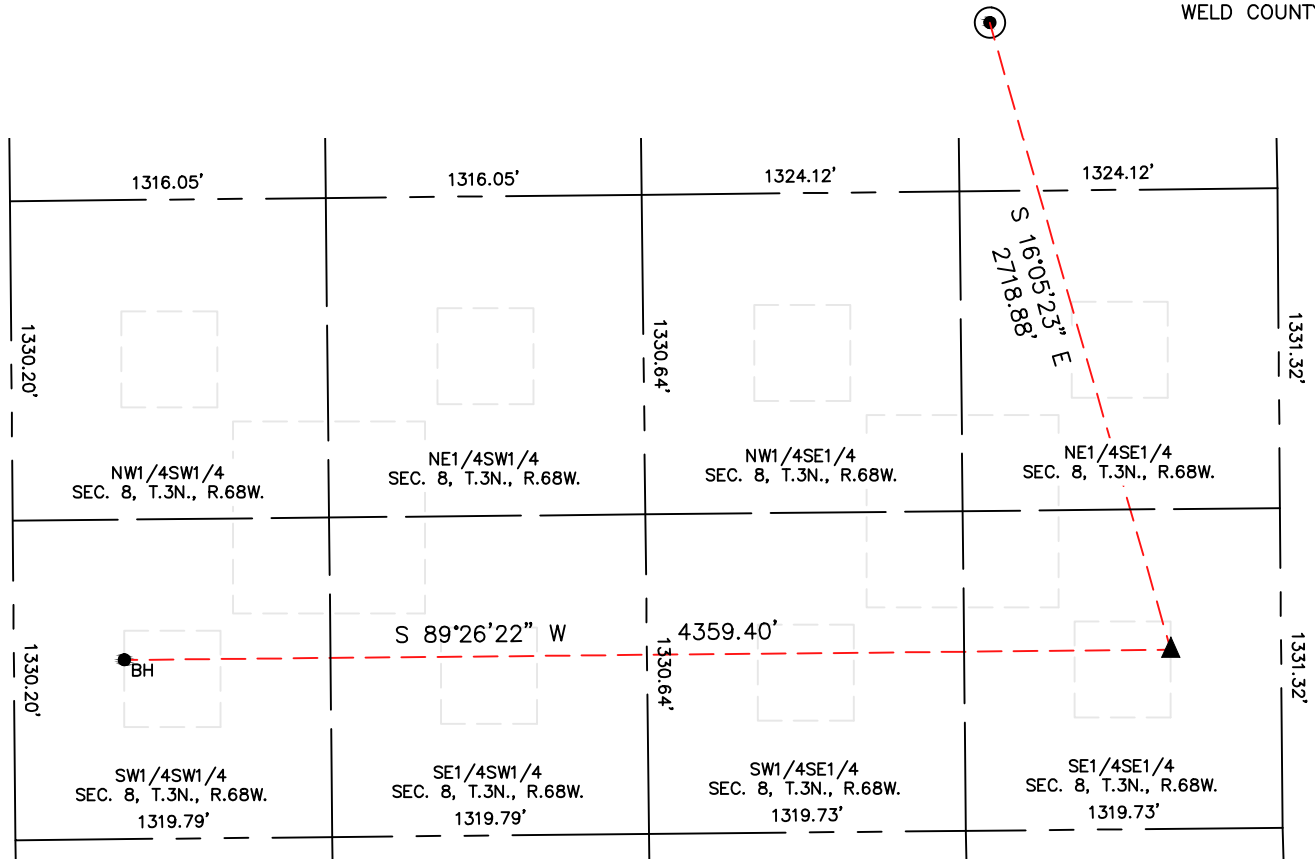


Lat40°, Inc. 6250 W. 10th Street, Unit 2, Greeley, CO 970-515-5294

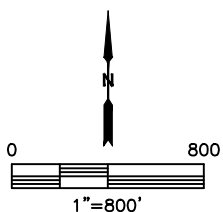
# SITE SKETCH

LITZENBERGER 21

SECTION: 8  
TOWNSHIP: 3N  
RANGE: 68W  
6TH. P.M.  
WELD COUNTY, CO



NOTE: NO EXISTING WELLS ADJACENT TO PROPOSED WELL BORE.



DATE: 6/17/2015  
PROJECT#: 2015065