

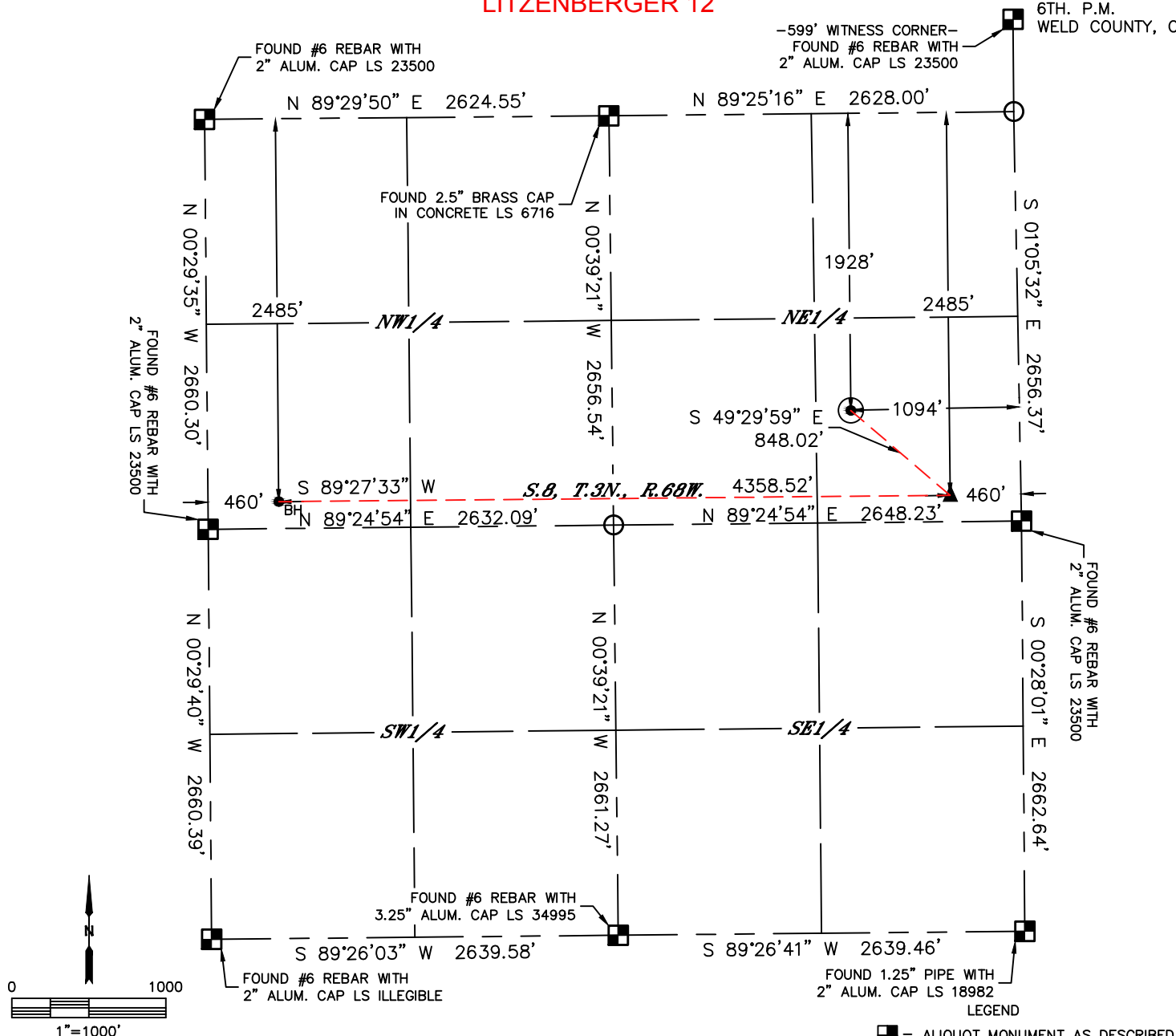


Lat40°, Inc. 6250 W. 10th Street, Unit 2, Greeley, CO 970-515-5294

WELL LOCATION CERTIFICATE

LITZENBERGER 12

SECTION: 8
TOWNSHIP: 3N
RANGE: 68W
6TH. P.M.
WELD COUNTY, CO



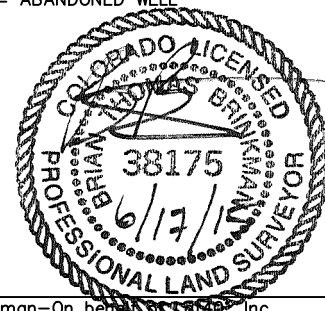
CLIENT: CUB CREEK ENERGY, LLC						LANDMAN: BOB GARDNER			
INSTRUMENT OPERATOR: BRIAN ROTTINGHAUS						SURVEY DATE: 5/14/2015		SURFACE USE: CROP LAND	
SHL FOOTAGE				SHL LAT°	SHL LONG°	SHL PDOP	SHL ELEV	SHL 1/4/1/4	SHL S-T-R
1928	FNL	1094	FEL	40.24233	-105.02151	1.4	5081	SENE	8-3-68

BHL FOOTAGE				BHL LAT °	BHL LONG °	BHL S-T-R	EP LAT °	EP LONG °	EP S-T-R
2485	FNL	460	FWL	40.24076	-105.03482	8-3-68	40.24081	-105.01921	8-3-68

NOTE:
1) Bearings shown are Grid Bearings of the Colorado State Plane Coordinate System, North Zone, North American Datum 1983. The lineal dimensions as contained herein are based upon the "U.S. Survey Foot."
2) Distances to section lines measured at 90 degrees from said section lines.
3) Ground elevations are based on an observed GPS elevation (NAVD 1988 DATUM).
4) Latitude and Longitude shown are (NAD 83 DATUM).
5) IMPROVEMENTS: See LOCATION DRAWING for all visible improvements within 500' of oil and gas location.
6) This map does not represent a boundary survey.

NEAREST CULTURAL ITEMS	
BUILDING	±413' NE
BUILDING UNIT	±507' NE
HIGH OCCUPANCY BUILDING UNIT	±3931' SE
DESIGNATED OUTSIDE ACTIVITY AREA	5280' +
PUBLIC ROAD (COUNTY ROAD 34.75)	±600' N
ABOVE GROUND UTILITY	±442' NE
RAILROAD	5280' +
PROPERTY LINE	±600' N

- LEGEND
- = ALIQUOT MONUMENT AS DESCRIBED
 - = CALCULATED POSITION
 - = SURFACE HOLE LOCATION (SHL)
 - ▲ = ENTRY POINT LOCATION (EP)
 - BH = BOTTOM HOLE LOCATION (BHL)
 - ⊙ = EXISTING WELL
 - ⊙ = ABANDONED WELL



Brian T. Brinkman-On behalf of Lat40°, Inc.
Colorado Licensed Professional Land Surveyor No. 38175
DATE: 6/17/2015
PROJECT#: 2015065

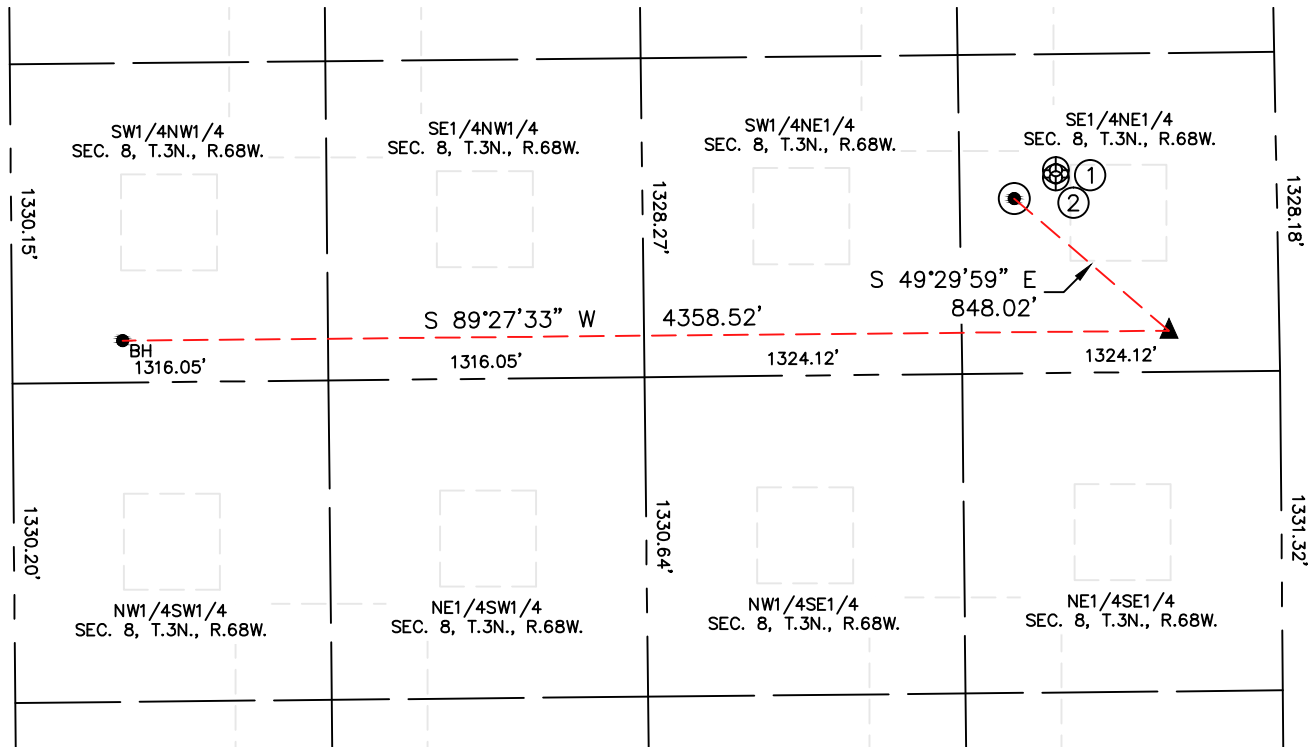


Lat40°, Inc. 6250 W. 10th Street, Unit 2, Greeley, CO 970-515-5294

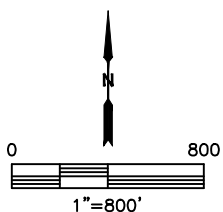
SITE SKETCH

LITZENBERGER 12

SECTION: 8
TOWNSHIP: 3N
RANGE: 68W
6TH. P.M.
WELD COUNTY, CO



WELL NO.	WELL NAME	SHL FOOTAGE				SHL LAT°	SHL LONG°	PDOP	ELEV (FT.)	1/4/1/4
1	KINTZ 1	1812	FNL	919	FEL	40.24265	-105.02089	2.0	5078	SENE
2	KINTZ 2	1842	FNL	919	FEL	40.24257	-105.02089	1.3	5078	SENE



DATE: 6/17/2015
PROJECT#: 2015065