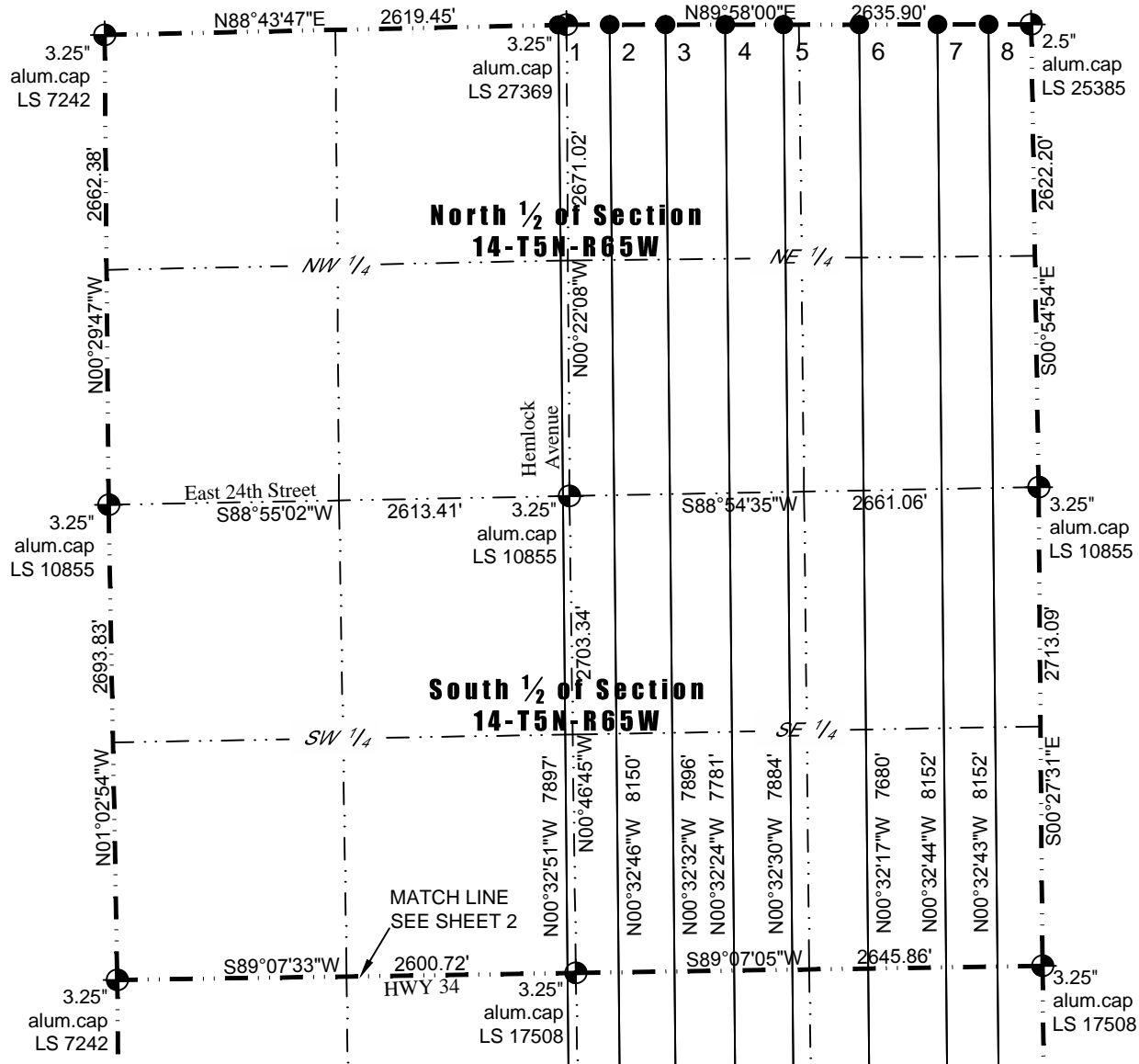




Washburn Land Surveying  
www.WashburnSurveying.com  
970-232-9645

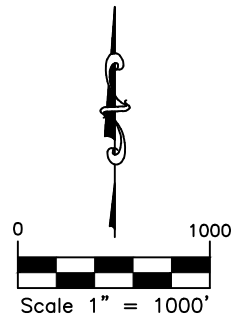
# MULI-WELL PLAN BROWN 5N65W23D PAD

SECTION: 23  
TOWNSHIP: 5N  
RANGE: 65W  
6TH P.M.  
WELD COUNTY, CO



## LEGEND:

- ALIQUOT CORNER AS DESCRIBED
- SURFACE HOLE LOCATION (SHL)
- ▲ ENTRY POINT (EP)
- BOTTOM HOLE LOCATION (BHL)

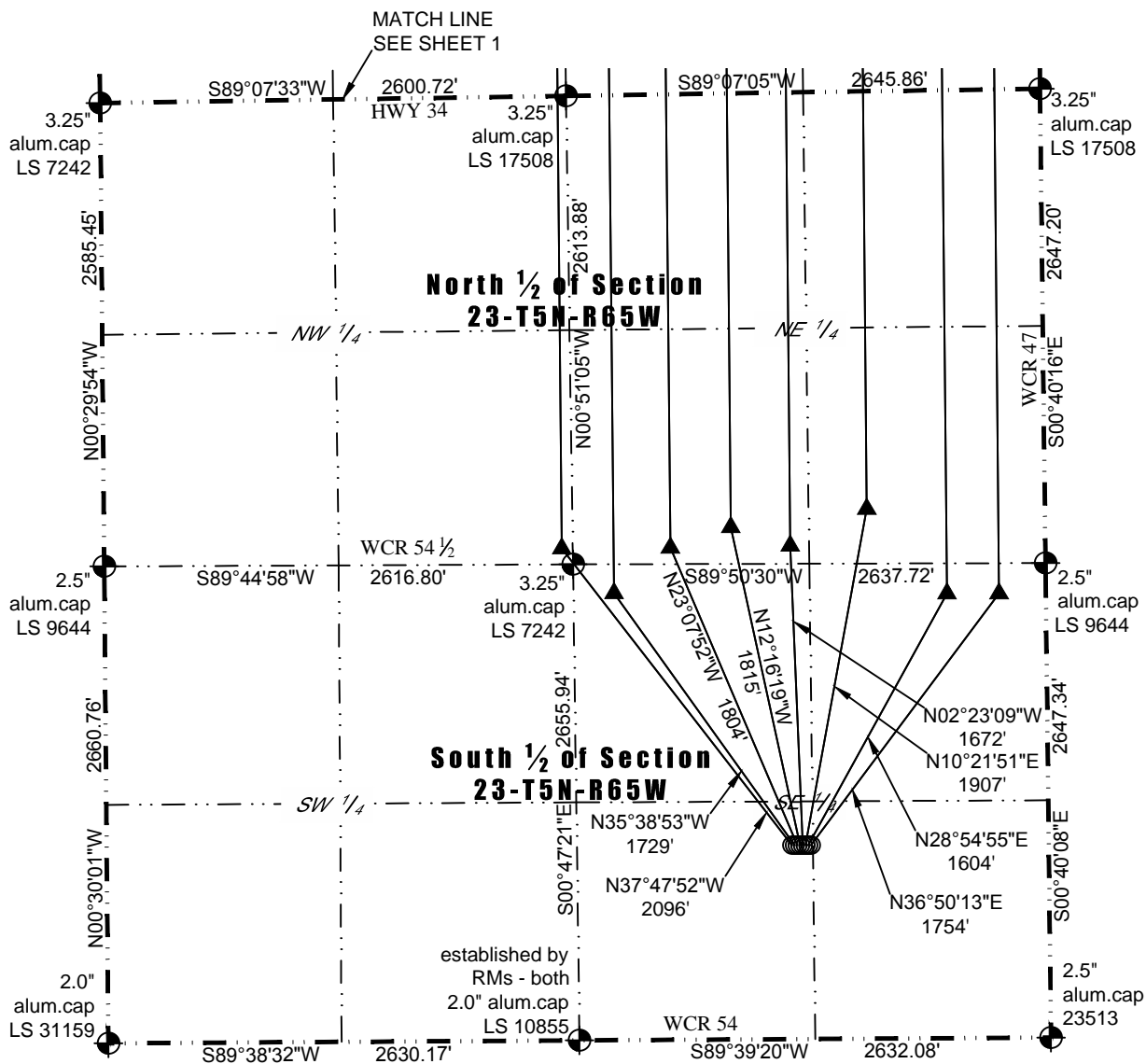




Washburn Land Surveying  
www.WashburnSurveying.com  
970-232-9645

# MULI-WELL PLAN BROWN 5N65W23D PAD

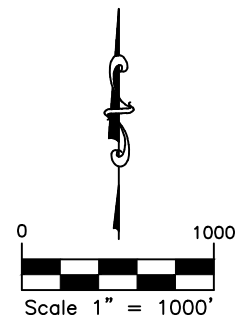
SECTION: 23  
TOWNSHIP: 5N  
RANGE: 65W  
6TH P.M.  
WELD COUNTY, CO



#	WELL NAME	BHL FOOTAGES				BHL LAT	BHL LONG	BHL S-T-R	BHL ¼ ¼
1	BROWN 23P-201	0	FNL	2574	FWL	N40.406693°	W104.630720°	14-5-65	NENW
2	BROWN 23P-321	0	FNL	2391	FEL	N40.406688°	W104.629680°	14-5-65	NWNE
3	BROWN 23P-221	0	FNL	2074	FEL	N40.406680°	W104.628541°	14-5-65	NWNE
4	BROWN 23D-341	0	FNL	1735	FEL	N40.406671°	W104.627324°	14-5-65	NWNE
5	BROWN 23D-201	0	FNL	1405	FEL	N40.406663°	W104.626139°	14-5-65	NWNE
6	BROWN 23D-421	0	FNL	975	FEL	N40.406652°	W104.624594°	14-5-65	NENE
7	BROWN 23X-341	0	FNL	533	FEL	N40.406641°	W104.623007°	14-5-65	NENE
8	BROWN 23X-241	0	FNL	242	FEL	N40.406633°	W104.621962°	14-5-65	NENE

## LEGEND:

- ALIQUOT CORNER AS DESCRIBED
- SURFACE HOLE LOCATION (SHL)
- ENTRY POINT (EP)
- BOTTOM HOLE LOCATION (BHL)





Washburn Land Surveying  
www.WashburnSurveying.com  
970-232-9645

# MULI-WELL PLAN BROWN 5N65W23D PAD

SECTION: 23  
TOWNSHIP: 5N  
RANGE: 65W  
6TH P.M.  
WELD COUNTY, CO

