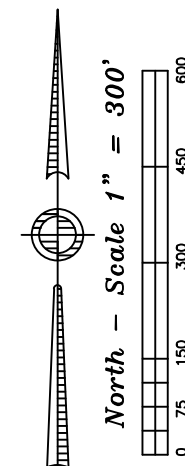
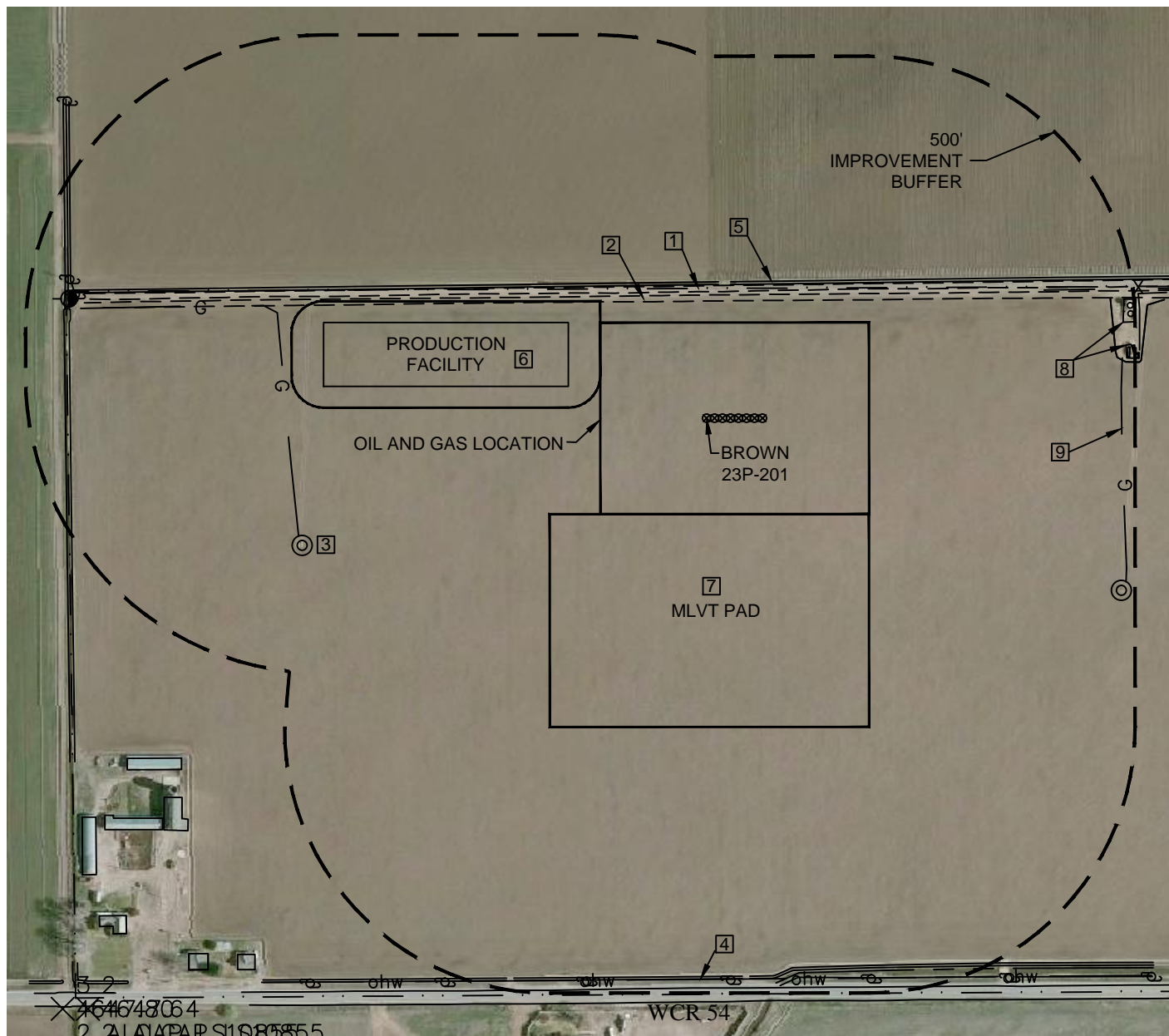




Washburn Land Surveying
www.WashburnSurveying.com
970-232-9645

LOCATION DRAWING BROWN 5N65W23D PAD

SECTION: 23
TOWNSHIP: 5N
RANGE: 65W
6TH P.M.
WELD COUNTY, CO



LEGEND:

- UTILITY POLE
- EXISTING WELL
- OVERHEAD UTILITY LINE
- EDGE OF ROAD/ACCESS
- TOP OF BANK
- FENCE LINE
- PROPERTY LINE
- EXISTING GAS LINE



Washburn Land Surveying
www.WashburnSurveying.com
970-232-9645

LOCATION DRAWING BROWN 5N65W23D PAD

SECTION: 23
TOWNSHIP: 5N
RANGE: 65W
6TH P.M.
WELD COUNTY, CO

IMPROVEMENTS (MEASUREMENTS ARE FROM THE PROPOSED BROWN 23P-201 WELL LOCATION)

- ① PROPERTY LINE: 244' N, 1082' S & 1200' W
- ② ACCESS: 220' N, 238' N & 1071' S
- ③ EXISTING WELL: 796' SW (BROWN #23-43), 844' SE (BROWN #1-23)
- ④ OVERHEAD UTILITY LINE: 1054' S, 1209' NW
- ⑤ DITCH: 251' N, 1045' SE, 1196' W (CONCRETE) & 1056' SE
- ⑥ PROPOSED PRODUCTION FACILITIES: 267' NW
- ⑦ PROPOSED TEMPORARY MLVT PAD: 180' S
- ⑧ EXISTING FACILITIES: 798' NE
- ⑨ EXISTING GAS LINE: 780' E & 785' W