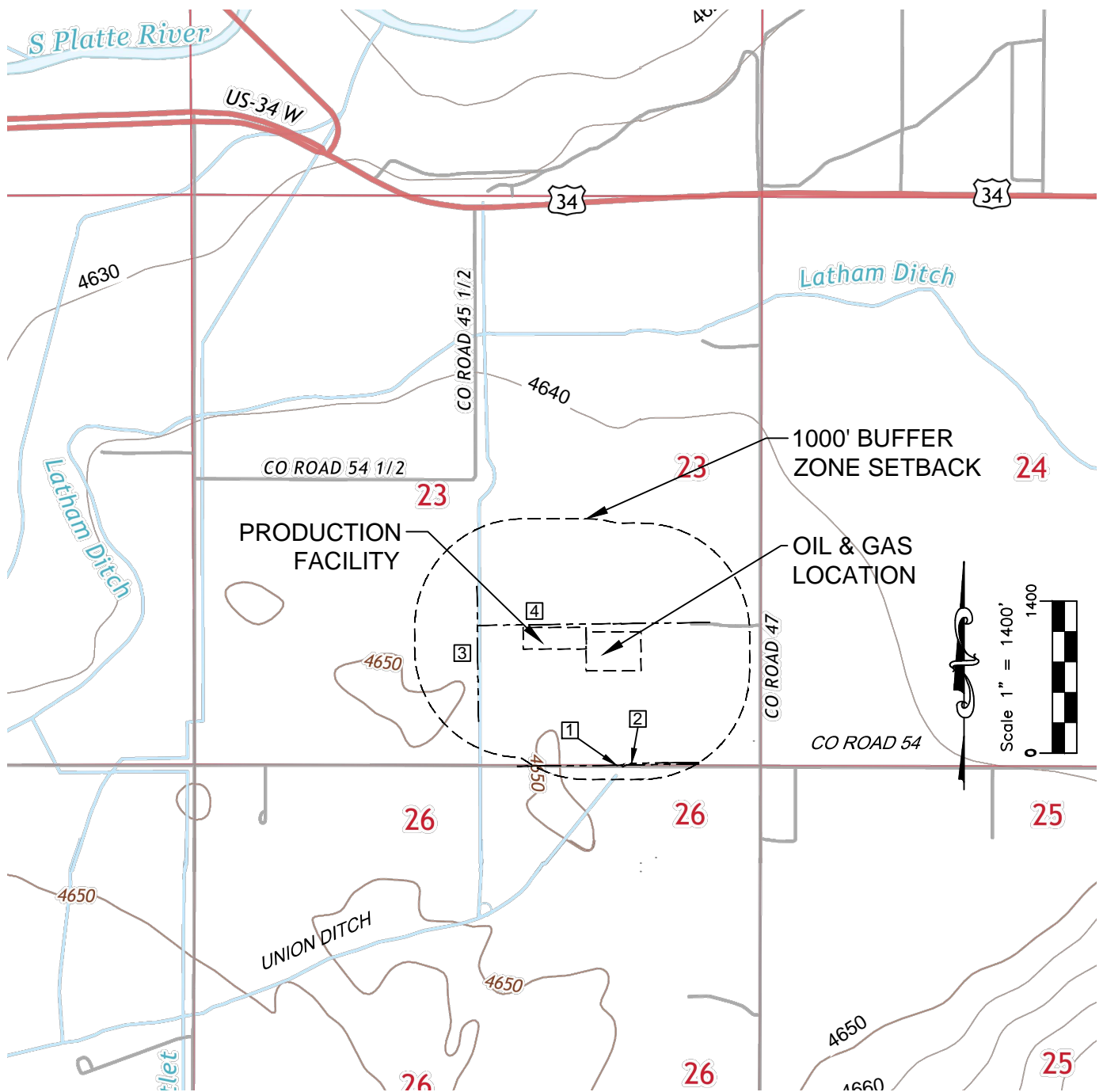




Washburn Land Surveying
www.WashburnSurveying.com
970-232-9645

HYDROLOGY MAP BROWN 5N65W23D PAD

SECTION: 23
TOWNSHIP: 5N
RANGE: 65W
6TH P.M.
WELD COUNTY, CO



DISTANCES BELOW MEASURED FROM THE PROPOSED
EDGE OF DISTURBANCE OF THE OIL AND GAS LOCATION

- 1 DITCH: 890' S (UNION DITCH)
- 2 DITCH: 853' S
- 3 DITCH: 418' W
- 4 DITCH: 21' N

NEAREST DOWN GRADIENT WATER FEATURE:
UNION DITCH 890' S

DATE: 10/14/2015 SHEET 1 OF 1