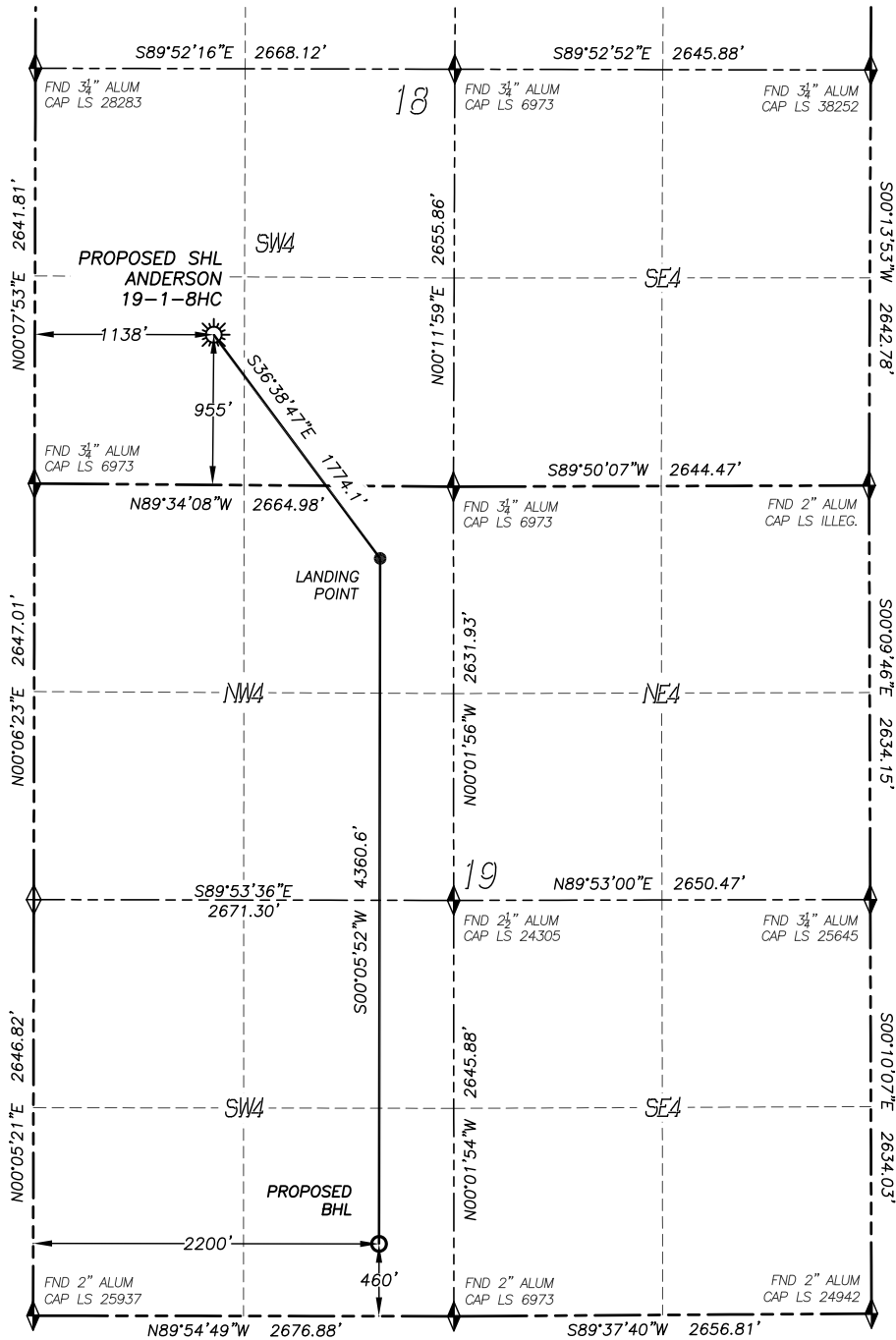


WELL LOCATION CERTIFICATE

ANDERSON 19-1-8HC

SECTION 18, TOWNSHIP 1 SOUTH, RANGE 66 WEST OF THE 6TH P.M.

**NAD 83 LATITUDE AND LONGITUDE****SURFACE LOCATION:**

LATITUDE: N39.96044°
 LONGITUDE: W104.82374°
 ELEVATION: 5005'
 FOOTAGE: 955' FSL, 1138' FWL
 QTR/QTR: SW4/SW4
 PDOP: 1.6

LANDING POINT:

LATITUDE: N39.95653°
 LONGITUDE: W104.81996°
 FOOTAGE: 460' FNL, 2200' FWL
 OF SEC. 19-T1S-R66W

BOTTOM HOLE:

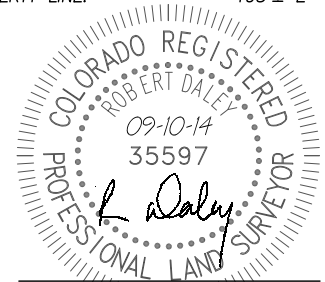
LATITUDE: N39.94456°
 LONGITUDE: W104.81999°
 FOOTAGE: 460' FSL, 2200' FWL
 OF SEC. 19-T1S-R66W

NOTES:

1. BEARINGS FOR THIS MAP ARE ASSUMED AND BASED UPON GPS OBSERVATIONS MADE BETWEEN MONUMENTS LOCATED AT THE SOUTHWEST CORNER AND SOUTH QUARTER CORNER OF SECTION 18, T.1S., R.66W.
2. HORIZONTAL DATUM IS NAD83.
3. VERTICAL DATUM IS NAVD88 AND ORIGINATES FROM THE LOCAL C.O.R.S. NETWORK, UTILIZING THE GEOID12A MODEL.
4. SEE LOCATION DRAWING FOR VISIBLE IMPROVEMENTS WITHIN 500' OF PROPOSED DISTURBED AREA.
5. SURFACE USE: AGRICULTURAL.
6. INST. OPERATOR: SCOTT ESTABROOKS.
7. NEAREST WELL: THERE ARE NO WELLS IN THIS SECTION.

NEAREST CULTURAL ITEMS:

1. BUILDING: 570'± SE
2. BUILDING UNIT: 823'± SE
3. HIGH OCC. BLD. UNIT: 5280'±
4. DES. OUTSIDE ACTIVITY AREA: 5280'±
5. PUBLIC ROAD: 944'± S
6. ABOVE GROUND UTILITY: 431'± NE
7. RAILROAD: 1541'± NW
8. PROPERTY LINE: 195'± E



FOR AND ON BEHALF OF
 DALEY LAND SURVEYING INC.,
 Robert Daley, PLS 35597

LEGEND

- ◆ FOUND MONUMENT
- ◆ CALCULATED POSITION
- ☀ PROPOSED WELL
- BOTTOM HOLE
- ⊗ ABANDONED WELL
- ⊗ EXISTING WELL

0 600 1200
 SCALE: 1" = 1200'

IN ACCORDANCE WITH A REQUEST FROM WARD PETROLEUM, DALEY LAND SURVEYING, INC. HAS DETERMINED THE SURFACE LOCATION OF THE ANDERSON 19-1-8HC WELL TO BE 955' FSL, 1138' FWL, AS MEASURED AT NINETY (90) DEGREES FROM THE SECTION LINES OF SECTION 18, TOWNSHIP 1 SOUTH, RANGE 66 WEST, OF THE 6TH P.M., AND THE BOTTOM HOLE LOCATION TO BE 460' FSL, 2200' FWL, AS MEASURED AT NINETY (90) DEGREES FROM THE SECTION LINES OF SECTION 19, TOWNSHIP 1 SOUTH, RANGE 66 WEST OF THE 6TH P.M., ADAMS COUNTY, COLORADO.

I HEREBY STATE THAT THIS WELL LOCATION CERTIFICATE WAS PREPARED BY ME OR UNDER MY DIRECT SUPERVISION, THAT THE WORK WAS COMPLETED ON 6/6/2014 FOR AND ON BEHALF OF WARD PETROLEUM AND THAT THIS MAP DOES NOT REPRESENT A BOUNDARY SURVEY, IT IS NOT A LAND SURVEY PLAT OR AN IMPROVEMENT SURVEY PLAT AND IT IS NOT TO BE RELIED UPON FOR THE ESTABLISHMENT OF FENCE, BUILDING OR OTHER FUTURE IMPROVEMENT LINES.