



Kerr-McGee Oil & Gas Onshore LP

A subsidiary of Anadarko Petroleum Corporation

1099 18th Street
Denver, CO 80202
720-929-6000

August 24, 2015

Matt Lepore
Director, Colorado Oil and Gas Conservation Commission
Department of Natural Resources
The Chancery Building
1120 Lincoln Street, Suite 801
Denver, CO 80203

Re: **30 Day Certification Letter - 318A.e**
GUEST 28N-25HZ (Doc No. 400868073)
Township 2 North, Range 65 West
Section 13: NE/4SW/4
Unit Acreage: 640 acres
Unit Spacing: 02N65W Sec 13: E/2SW/4, W/2SE/4, SE/4NW/4, SW/4NE/4
02N65W Sec 24: E/2W/2, W/2E/2
02N65W Sec 25: NE/4NW/4, NW/4NE/4
Weld County, Colorado

Dear Director Lepore:

Kerr-McGee Oil and Gas Onshore LP (“KMG”) hereby certifies that a thirty (30) day notice has been given by certified mail to all mineral owners in the proposed wellbore spacing unit. We have not received any objections to such well location, proposed spacing unit, or additional producing formation. KMG hereby respectfully requests approval of this boundary well.

If you have any questions or issues regarding this permit, please contact our office.

Sincerely,

Kerr-McGee Oil and Gas Onshore LP

A handwritten signature in blue ink that reads "Cheryl Light".

Cheryl Light
Senior Regulatory Analyst

Enclosure

PROPOSED SPACING UNIT

WELL LOCATION CERTIFICATE: GUEST 28N-25HZ

SECTION 13, TOWNSHIP 2 NORTH, RANGE 65 WEST, 6TH P.M.

NW COR. SEC. 13
2" ALUM. CAP
PLS 25937, 1996

S 89°36'41" E 2594.89'

S 89°36'50" E 2594.45'

NE COR. SEC. 13
3/4" ALUM. CAP
PLS 23520, 2002

N 1/4 COR. SEC. 13
2" ALUM. CAP
PLS 25937, 1996

(BASIS OF BEARINGS) SEE NOTE 2

N 00°08'29" W 2648.40'

NOTES:
BH AND HEEL (WGS 84 UTM 13N)
LOCATIONS PROVIDED BY CLIENT.
SEE ATTACHED MAP FOR ADDITIONAL
IMPROVEMENTS WITHIN 500'.

PDOP= 2.0
GPS OPERATOR: BEN MILIUS

SURFACE LOCATION
GROUND ELEVATION= 4872'
NAD83 STATE PLANE CO N
LATITUDE= 40.137757°
LONGITUDE= 104.614320°

LATITUDE= 40°08'15.927"
LONGITUDE= 104°36'51.551"

HEEL LOCATION
WGS84 UTM 13N
LATITUDE= 40.138177°
LONGITUDE= 104.612967°

LATITUDE= 40°08'17.438"
LONGITUDE= 104°36'46.681"

BOTTOM HOLE LOCATION
NAD83 STATE PLANE CO N
LATITUDE= 40.115636°
LONGITUDE= 104.613151°

LATITUDE= 40°06'56.290"
LONGITUDE= 104°36'47.344"

W 1/4 COR. SEC. 13
3/4" ALUM. CAP
PLS 10855, 1998

N 67°25'32" E 408'
(TRUE N 67°59'52" E)
S 89°55'24" E 2605.94'

HEEL- 2546' FSL
2404' FWL

13

S 89°49'20" E 2602.73'

C 1/4 COR. SEC. 13
3/4" ALUM. CAP
PLS 24307, 2006

E 1/4 COR. SEC. 13
3/4" ALUM. CAP
PLS 27269, 2004

N 00°17'38" W 2640.01'

GUEST
28N-25HZ

2027'

2391'

S 00°12'51" E 8211'
(TRUE S 00°21'33" W)

S 00°22'42" E 2634.36'

SW COR. SEC. 13
2 1/2" ALUM. CAP
PLS 34980, 2007

S 89°57'07" W 2609.78'

S 1/4 COR. SEC. 13
2 1/2" ALUM. CAP
PLS 38345, 2013

S 89°57'07" W 2609.78'

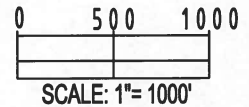
SE COR. SEC. 13
CALC'D FROM W.C. 30' E
3/4" ALUM. CAP
PLS 27269, 1998

BH-400' FNL
2403' FWL

WELL GUEST 28N-25HZ TO BE LOCATED 2391' FSL AND 2027' FWL

LEGEND

- ⊕ = EXISTING MONUMENT
- = PROPOSED WELL
- BH = BOTTOM HOLE
- ⬤ = BOTTOM HOLE
- ▲ = HEEL LOCATION
- = CALCULATED POSITION

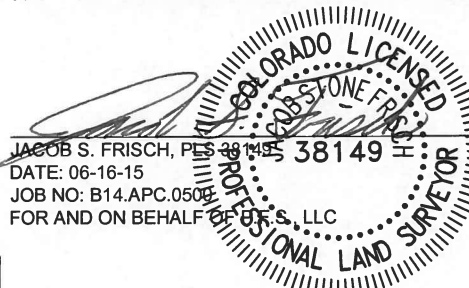


NOTES:

1. THIS FIELD SURVEY CONFORMS TO THE MINIMUM STANDARDS SET BY THE C.O.G.C.C., RULE NO. 215
2. BEARINGS ARE BASED ON THE ASSUMPTION THAT THE NORTH LINE OF THE NORTHEAST QUARTER OF SECTION 13, BEARS S89°36'50"E BETWEEN THE MONUMENTS DESCRIBED HEREON.
3. GRID DISTANCES ARE SHOWN, AS MEASURED IN THE FIELD, WITH TIES TO WELLS MEASURED PERPENDICULAR TO SECTION LINES. TO GET GROUND DISTANCES MULTIPLY THE SHOWN DISTANCE BY 1.000272228.
4. ALL LINES SHOWN THAT ARE WITHOUT DIMENSION SHOULD BE CONSIDERED SCALED AND ONLY REPRESENT A GRAPHICAL DEPICTION OF THE APPROXIMATE LOCATION OF SAID LINE.
5. ORIGINAL SIGNING DATE OF OCTOBER 18, 2014. ORIGINAL WELL STAKING COMPLETED ON OCTOBER 3, 2014. REV. JUNE 15, 2015 FOR HEEL REVISION.

SHEET 1 OF 3

I, JACOB S. FRISCH, A LICENSED PROFESSIONAL LAND SURVEYOR IN THE STATE OF COLORADO DO HEREBY CERTIFY TO **KERR-MCGEE OIL & GAS ONSHORE LP**, THAT THE SURVEY AND WELL LOCATION CERTIFICATE SHOWN HEREON WERE DONE BY ME OR UNDER MY DIRECT SUPERVISION AND THAT THE DRAWING SHOWN HEREON ACCURATELY DEPICTS THE PROPOSED LOCATION OF THE WELL. THIS CERTIFICATE DOES NOT REPRESENT A LAND SURVEY PLAT OR IMPROVEMENT SURVEY PLAT AS DEFINED BY C.R.S. 38-51-102 AND CANNOT BE RELIED UPON TO DETERMINE OWNERSHIP.



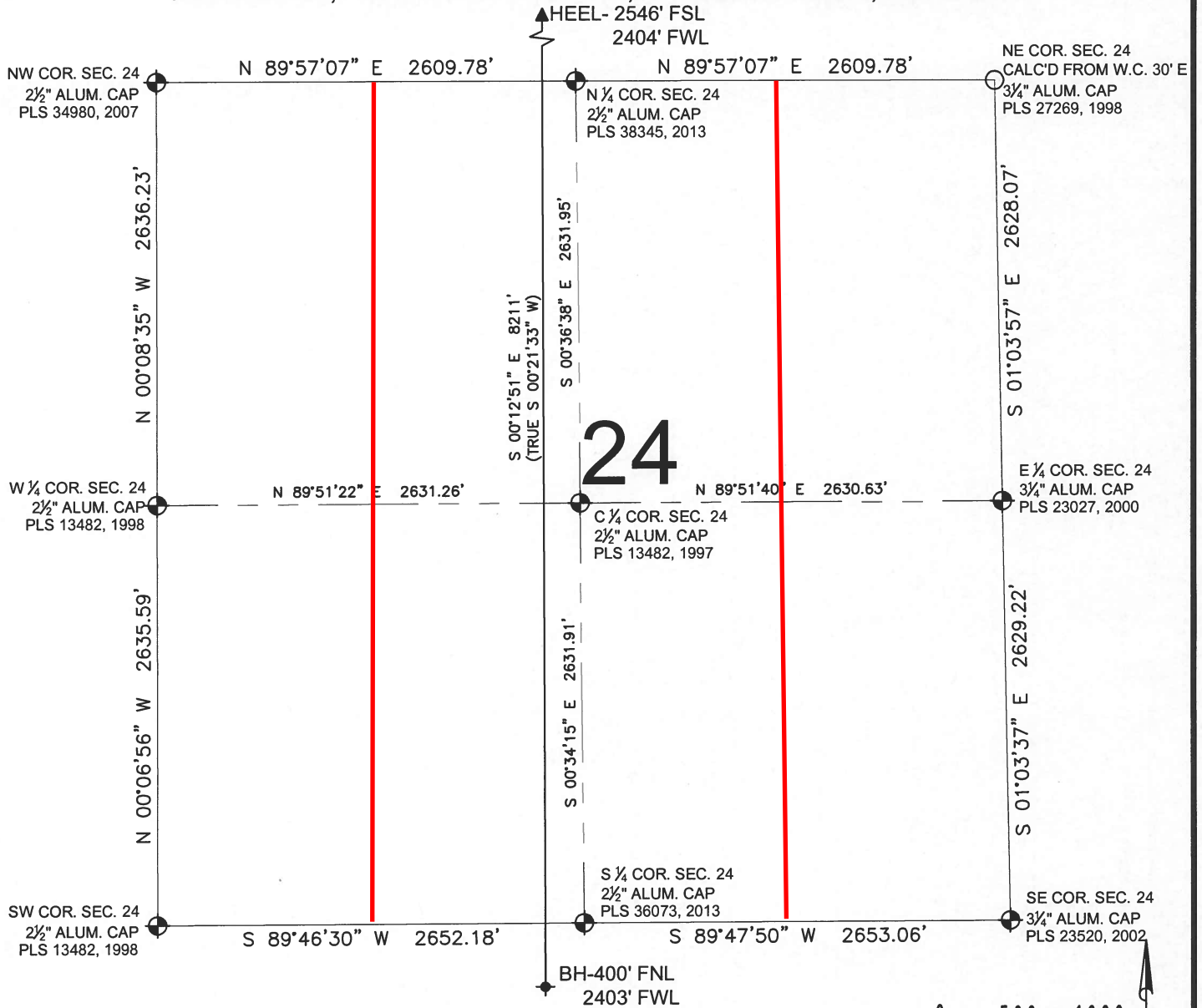
PREPARED BY: PFS Petroleum Field Services, LLC 7536 Hilltop Circle Denver, CO 80221	FIELD DATE: 01-08-15	SURFACE LOCATION: NE 1/4 SW 1/4, SEC. 13, T2N, R65W, 6TH P.M.	
	DRAWING DATE: 06-15-15	BY: KAD	CHECKED: MLP

NOTICE: ACCORDING TO COLORADO LAW YOU MUST COMMENCE ANY LEGAL ACTION BASED UPON ANY DEFECT IN THIS SURVEY WITHIN THREE YEARS AFTER YOU FIRST DISCOVER SUCH DEFECT. IN NO EVENT MAY ANY ACTION BASED UPON ANY DEFECT IN THIS SURVEY BE COMMENCED MORE THAN TEN YEARS FROM THIS SAID DATE OF THIS CERTIFICATION SHOWN HEREON.

PROPOSED SPACING UNIT

WELL LOCATION CERTIFICATE: GUEST 28N-25HZ

SECTION 24, TOWNSHIP 2 NORTH, RANGE 65 WEST, 6TH P.M.



LEGEND

- ⊙ = EXISTING MONUMENT
- = PROPOSED WELL
- BH = BOTTOM HOLE
- ◆ = BOTTOM HOLE
- ▲ = HEEL LOCATION
- = CALCULATED POSITION

0 500 1000

SCALE: 1"=1000'

NOTES:

- THIS FIELD SURVEY CONFORMS TO THE MINIMUM STANDARDS SET BY THE C.O.G.C.C., RULE NO. 215
- BEARINGS ARE BASED ON THE ASSUMPTION THAT THE NORTH LINE OF THE NORTHEAST QUARTER OF SECTION 13, BEARS S89°36'50"E BETWEEN THE MONUMENTS DESCRIBED HEREON.
- GRID DISTANCES ARE SHOWN, AS MEASURED IN THE FIELD, WITH TIES TO WELLS MEASURED PERPENDICULAR TO SECTION LINES. TO GET GROUND DISTANCES MULTIPLY THE SHOWN DISTANCE BY 1.000272228.
- ALL LINES SHOWN THAT ARE WITHOUT DIMENSION SHOULD BE CONSIDERED SCALED AND ONLY REPRESENT A GRAPHICAL DEPICTION OF THE APPROXIMATE LOCATION OF SAID LINE.
- ORIGINAL SIGNING DATE OF OCTOBER 18, 2014. ORIGINAL WELL STAKING COMPLETED ON OCTOBER 3, 2014. REV. JUNE 15, 2015 FOR HEEL REVISION.

SHEET 2 OF 3

PREPARED BY: Petroleum Field Services, LLC 7535 Hilltop Circle Denver, CO 80221	FIELD DATE: 01-08-15	SURFACE LOCATION: NE 1/4 SW 1/4, SEC. 13, T2N, R65W, 6TH P.M.
	DRAWING DATE: 06-15-15	WELD COUNTY, COLORADO
BY: KAD	CHECKED: MLP	

JACOB S. FRISCH, PLS 38149
 DATE: 06-16-15
 JOB NO: B14.APC.0508
 FOR AND ON BEHALF OF P.F.S., LLC

NOTICE: ACCORDING TO COLORADO LAW YOU MUST COMMENCE ANY LEGAL ACTION BASED UPON ANY DEFECT IN THIS SURVEY WITHIN THREE YEARS AFTER YOU FIRST DISCOVER SUCH DEFECT. IN NO EVENT MAY ANY ACTION BASED UPON ANY DEFECT IN THIS SURVEY BE COMMENCED MORE THAN TEN YEARS FROM THIS SAID DATE OF THIS CERTIFICATION SHOWN HEREON.

