



7136 South Yale Avenue, Suite 414

Tulsa, Oklahoma 74136-6378

phone 918.925.9739

fax 866.534.4559

WWW.HZMUD.COM/25

Customer Information	Well Information
<p>Operator: Noble Energy Inc 1625 Broadway Suite 2200 Denver, Colorado 80202</p> <p>Geologist: Emerson Palmer Noble Energy Inc.</p>	<p>Well Name: Coalview G02-65-1HN</p> <p>Location: 1-T4N-R65W 2607' FSL, 351' FEL</p> <p>County: Weld State: Colorado</p>
Mud Logging Details	
<p>Logger: Tom Wacholz & Zack St. Clair</p> <p>Log Interval: 2500' MD to 7060' MD</p> <p>Start Date: September 25, 2014</p> <p>Release Date: October 2, 2014</p>	<p>Drilling Rig: H&P 343</p> <p>Total Depth: 16753' MD</p> <p>TD Date: October 1, 2014</p> <p>Formation: Niobrara C Chalk</p> <p>KB Elevation: 4852'</p> <p>GR Elevation: 4828'</p> <p>API Number: 05-123-39922-0000</p>

ROCK TYPES

shale Anhy Bent Brec Cht Clyst Coal	Congl Dol Gyp Igne Lmst Meta Mrlst	Salt Shale Shcol Shgy Sltst Ss Till	gw lmywash ogw olmywash oshly gw shly gw sdygw	hvycrbsh nosmpl Lsdetrst sltst sdy sh
---	--	---	--	---

ROP (Ft/Hr) Gamma (API)	Drill Depth v. Time	Survey Data	Depth	Lithology	Lithology Percentages	Sample Photographs	Geological Description	TG (1-8) C1 (units) C2 (units) C3 (units) C4 (units)	Total Gas, C1-C4
ROP (Ft/Hr) Gamma (API)	Drill Depth v. Time		24				NOBLE ENERGY INC COALVIEW G02-65-1HN 1-T4N-R65W 2607' FSL, 351' FEL WELD CO., CO H&P 343 LOGGERS: TOM WACHOLZ ZACK ST. CLAIR CALLED OUT BY COMPANY MAN @ 6:00 AM ON 9/25/2014 COMMENCED LOGGING @ 2500' MD @ 1:15 AM ON 9/26/2014 W/BIT # 2	TG (1-8) C1 (units) C2 (units) C3 (units) C4 (units)	Total Gas, C1-C4
ROP (Ft/Hr) Gamma (API)	Drill Depth v. Time						NOBLE ENERGY INC COALVIEW G02-65-1HN 1-T4N-R65W 2607' FSL, 351' FEL WELD CO., CO H&P 343 LOGGERS: TOM WACHOLZ ZACK ST. CLAIR CALLED OUT BY COMPANY MAN @ 6:00 AM ON 9/25/2014 COMMENCED LOGGING @ 2500' MD @ 1:15 AM ON 9/26/2014 W/BIT # 2	TG (1-8) C1 (units) C2 (units) C3 (units) C4 (units)	Total Gas, C1-C4

9/26/2014
DAY 02
0 FT/24HRS

8.75", HDBS, MMD56 (S/N) 12529667
IN @ 683' MD

WOB 2.2K
PP 3268
RPM 0
SPM 85/85

MD 2585 TVD 2576.89
INC 8.5 AZ 130.4
VS -70.67

ROP (Ft/Hr)
Gamma (API)

1500
250

MD 2678 TVD 2668.74
INC 9.6 AZ 134.96
VS -81.1

2500
2550
2600
2650
2700



2500' MD-2600' MD: SLTST: 70% LTGY
- MEDLTGY, FRI, FN TO MED GRN,
W SRTD, CALC CMT, SANDY, IMBD
PYR, INTGR POR, NO STN, NO
FLOR, NO O FLOR, NO CUT, NO
RNG

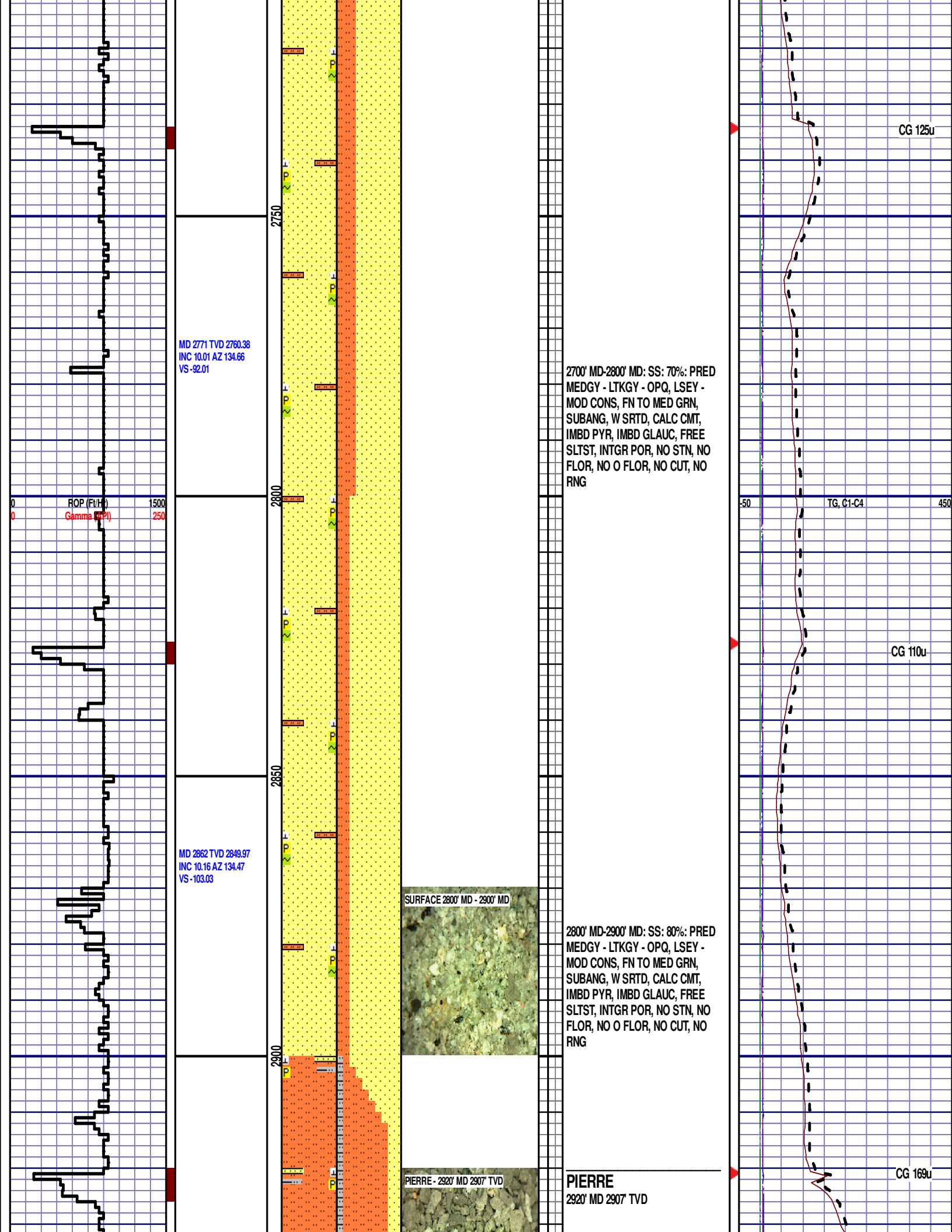
2600' MD-2700' MD: SLTST: 60% LTGY
- MEDLTGY, FRI, FN TO MED GRN,
W SRTD, CALC CMT, SANDY, IMBD
PYR, INTGR POR, NO STN, NO
FLOR, NO O FLOR, NO CUT, NO
RNG

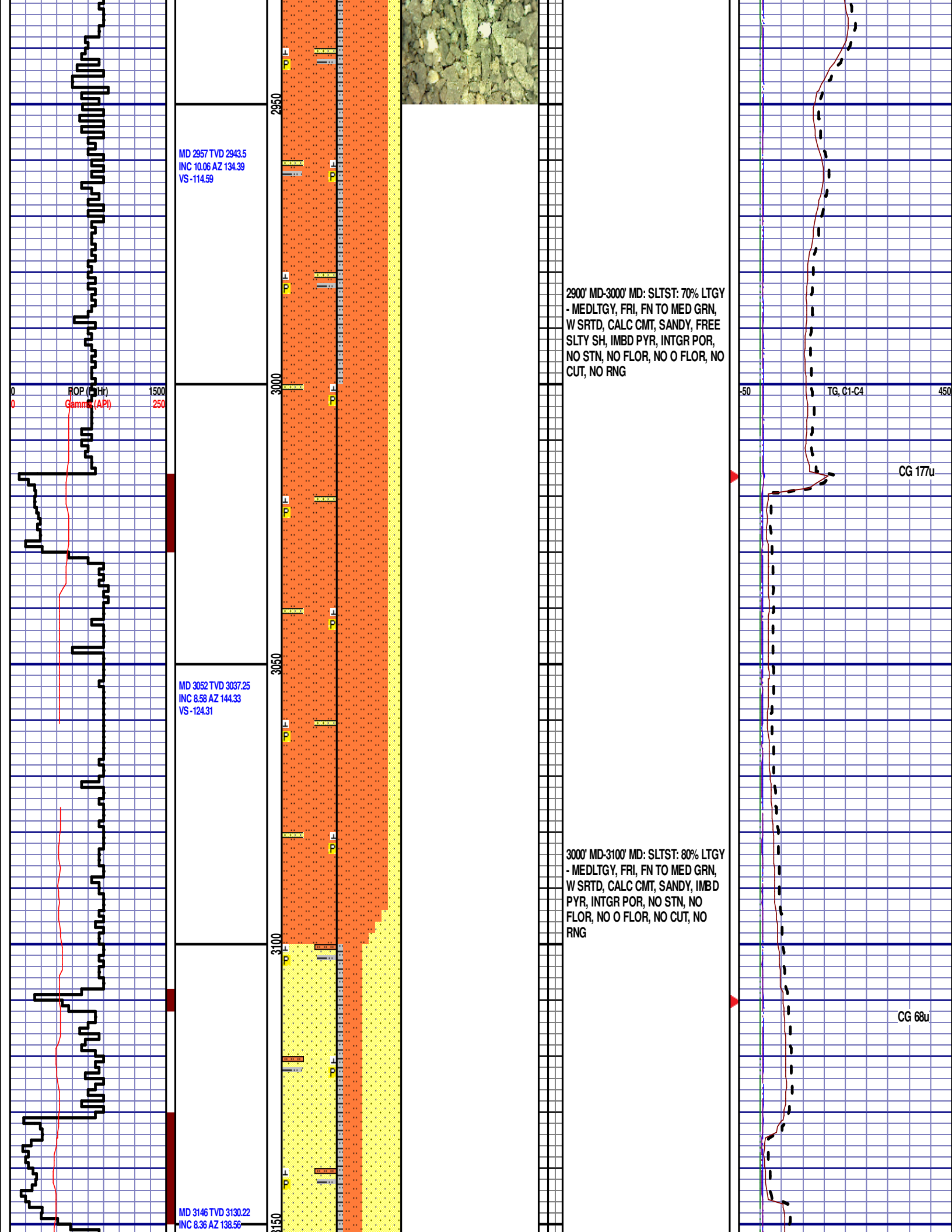
DEPTH 683'
WT 8.85
VIS 26
PH 7.9
FIL 35.0
CL 2400
CAL 220
H2O 96.8
OIL 0.3
LGS 13.6
GEL 1/2/2
PV 1
YP 3
CK 2/0
SOL 2.7

CG 42u

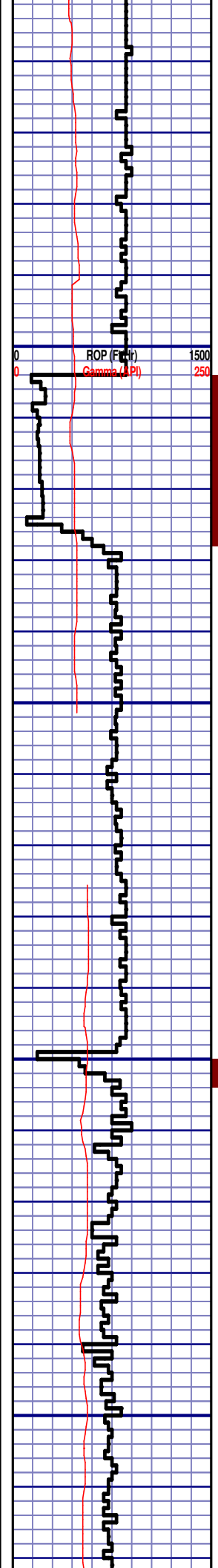
TG, C1-C4

CG 123u



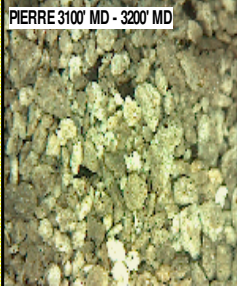
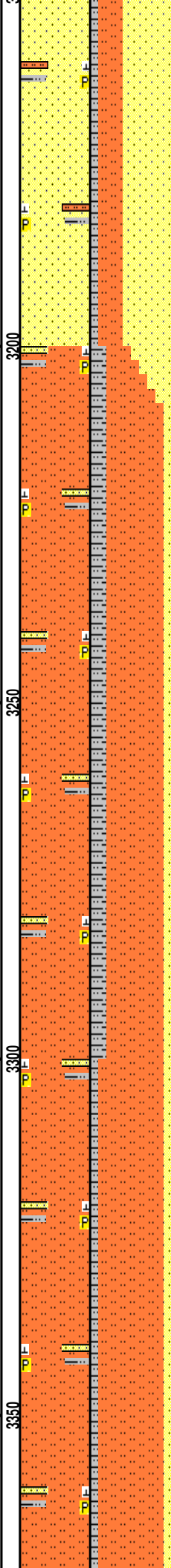


VS -132.61



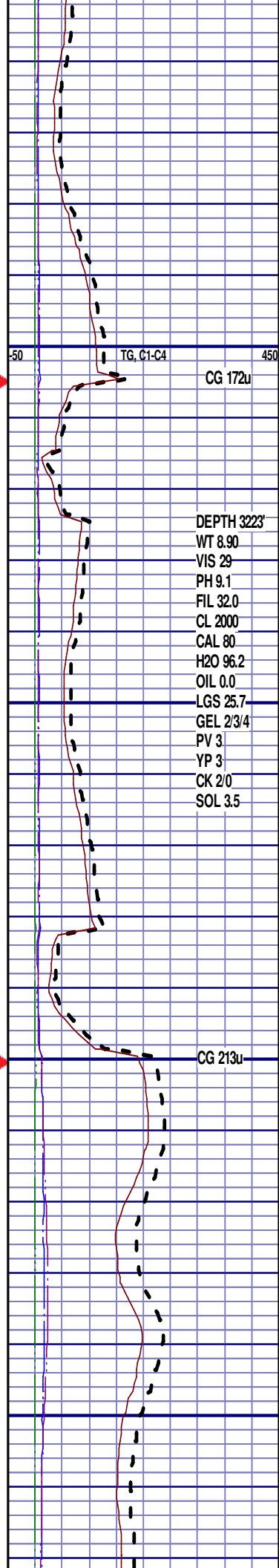
MD 3241 TVD 3224.18
INC 8.62 AZ 133.73
VS -142.02

MD 3336 TVD 3318.33
INC 6.72 AZ 135.21
VS -150.82



3100' MD-3200' MD: SS: 60%: PRED
MEDGY - LTKGY - OPQ, LSEY -
MOD CONS, FN TO MED GRN,
SUBANG, W SRTD, CALC CMT,
IMBD PYR, FREE SLTST, FREE
SLTY SH, INTGR POR, NO STN, NO
FLOR, NO O FLOR, NO CUT, NO
RNG

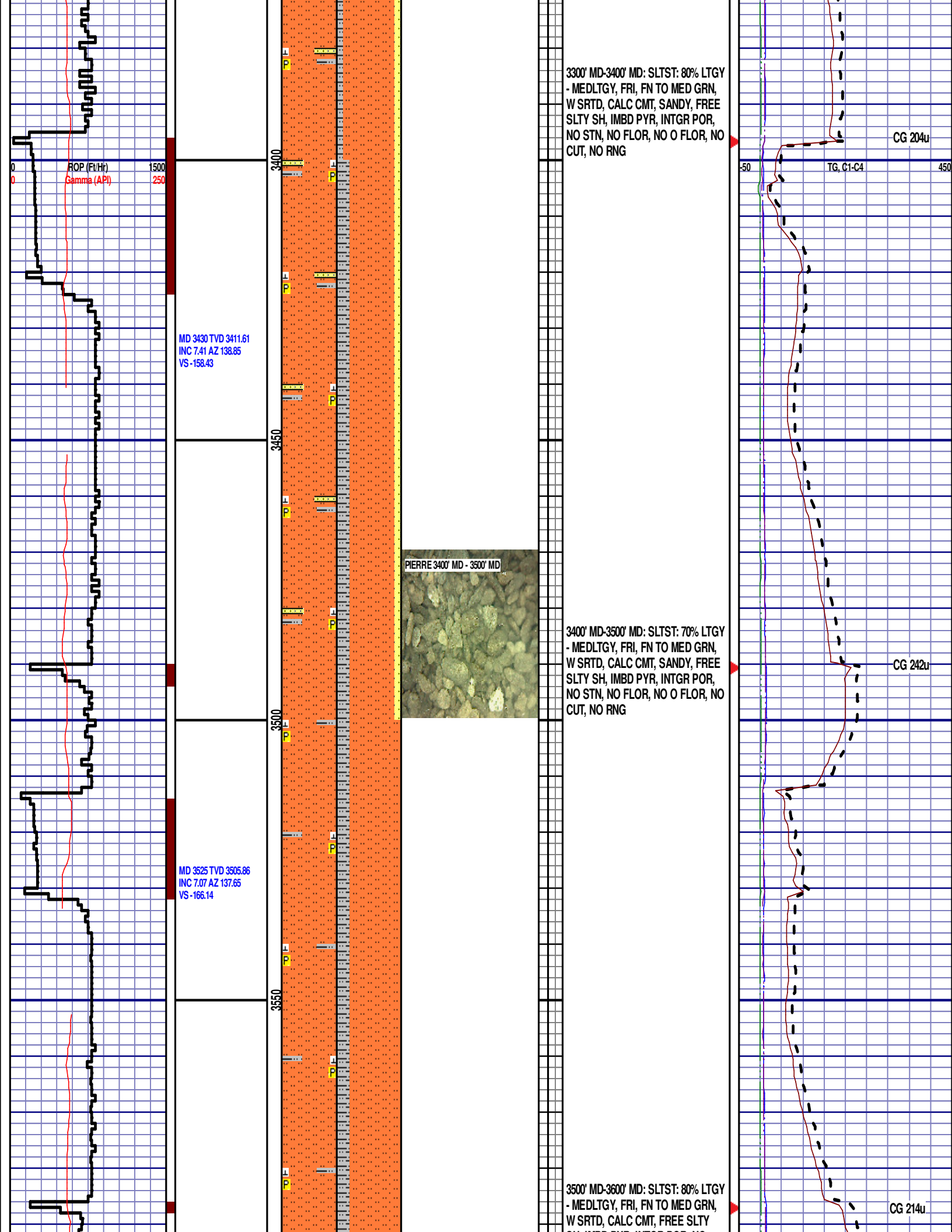
3200' MD-3300' MD: SLTST: 70% LTGY
- MEDLTGY, FRI, FN TO MED GRN,
W SRTD, CALC CMT, SANDY, FREE
SLTY SH, IMBD PYR, INTGR POR,
NO STN, NO FLOR, NO O FLOR, NO
CUT, NO RNG

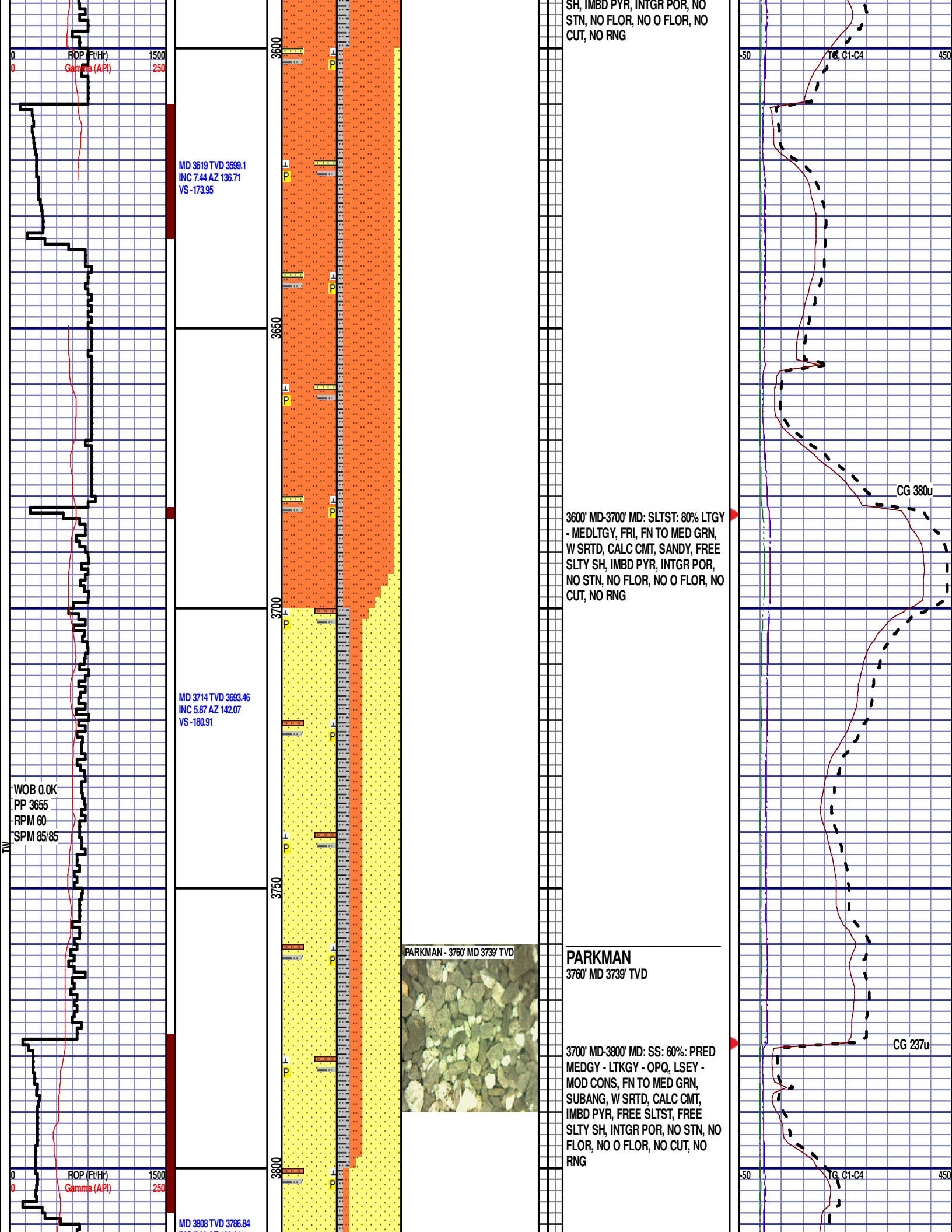


CG 172u

DEPTH 3223'
WT 8.90
VIS 29
PH 9.1
FIL 32.0
CL 2000
CAL 80
H2O 96.2
OIL 0.0
LGS 25.7
GEL 23/4
PV 3
YP 3
CK 2/0
SOL 3.5

CG 213u





INC 7.33 AZ 139.04
VS -187.55

MD 3903 TVD 3880.98
INC 8.11 AZ 141.94
VS -195.37

MD 3998 TVD 3974.98
INC 8.49 AZ 142.89
VS -203.41

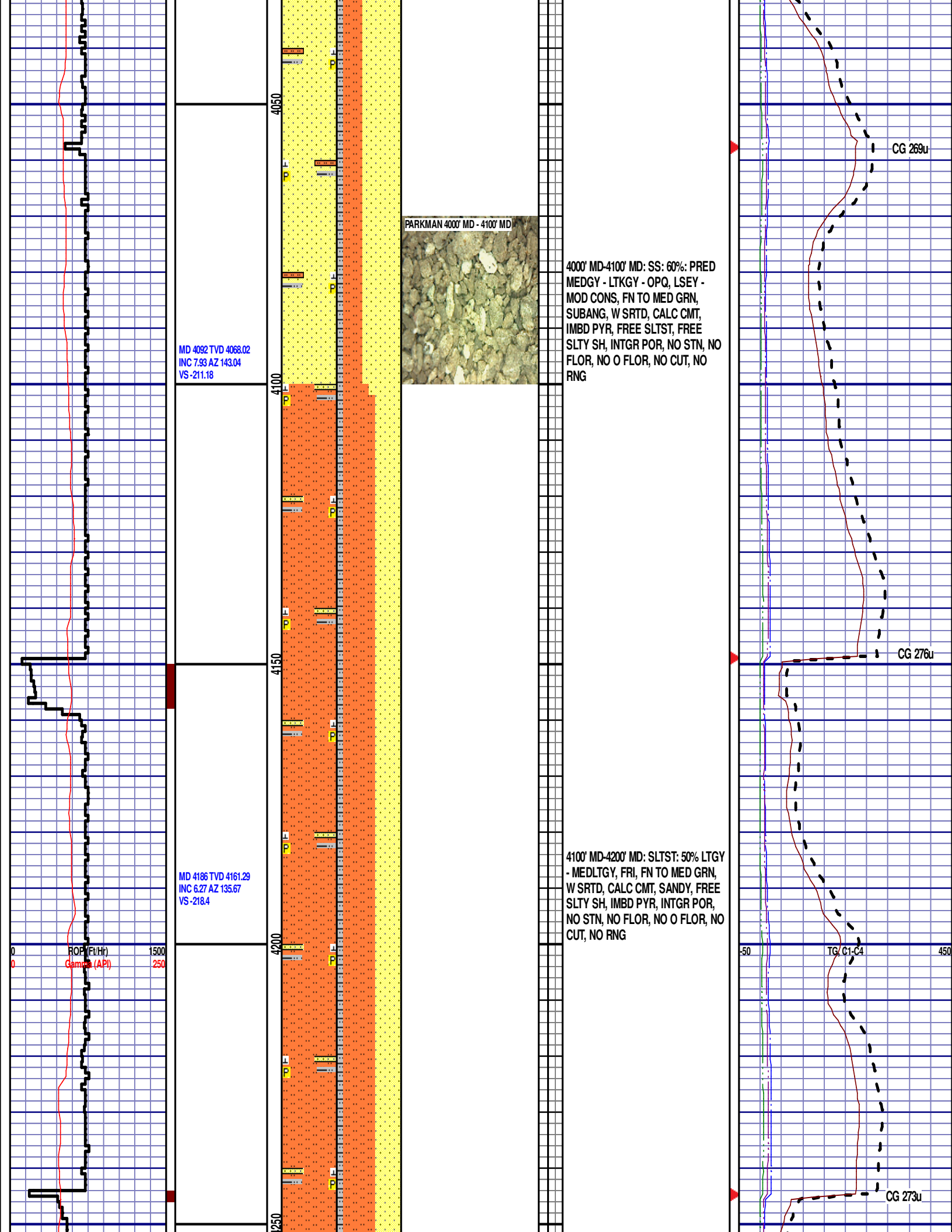
3800' MD-3900' MD: SS: 80%: PRED
MEDGY - LTKGY - OPQ, LSEY -
MOD CONS, FN TO MED GRN,
SUBANG, W SRTD, CALC CMT,
IMBD PYR, FREE SLTST, FREE
SLTY SH, INTGR POR, NO STN, NO
FLOR, NO O FLOR, NO CUT, NO
RNG

3900' MD-4000' MD: SS: 70%: PRED
MEDGY - LTKGY - OPQ, LSEY -
MOD CONS, FN TO MED GRN,
SUBANG, W SRTD, CALC CMT,
IMBD PYR, FREE SLTST, FREE
SLTY SH, INTGR POR, NO STN, NO
FLOR, NO O FLOR, NO CUT, NO
RNG

CG 380u

CG 232u

TG, C1-C4



MD 4280 TVD 4254.79
INC 5.65 AZ 133.73
VS -225.13

MD 4374 TVD 4348.41
INC 4.6 AZ 136.15
VS -230.91

MD 4469 TVD 4443.14

4200' MD-4300' MD: SLTST: 50% LTGY
- MEDLTGY, FRI, FN TO MED GRN,
W SRTD, CALC CMT, SANDY, FREE
SLTY SH, IMBD PYR, INTGR POR,
NO STN, NO FLOR, NO O FLOR, NO
CUT, NO RNG



4300' MD-4400' MD: SLTST: 70% LTGY
- MEDLTGY, FRI, FN TO MED GRN,
W SRTD, CALC CMT, SANDY, FREE
SLTY SH, IMBD PYR, INTGR POR,
NO STN, NO FLOR, NO O FLOR, NO
CUT, NO RNG

CG 163u

GAS SCALE: -250u
TO 2250u

Scale Change
TG, C1-C4

(250 UNITS/DIVISION)

CG 466u

INC 3.98 AZ 134.2
VS -235.76

MD 4564 TVD 4537.92
INC 3.78 AZ 132.59
VS -240.3

MD 4659 TVD 4632.76
INC 2.85 AZ 135.27
VS -244.16

SUSSEX - 4471' MD 4445' TVD

SUSSEX 4600' MD - 4700' MD

SUSSEX
4471' MD 4445' TVD

4400' MD-4500' MD: SS: 60%: PRED
MEDGY - LTKGY - OPQ, LSEY -
MOD CONS, FN TO MED GRN,
SUBANG, W SRTD, CALC CMT,
IMBD PYR, FREE SLTST, FREE
SLTY SH, INTGR POR, NO STN, NO
FLOR, NO O FLOR, NO CUT, NO
RNG

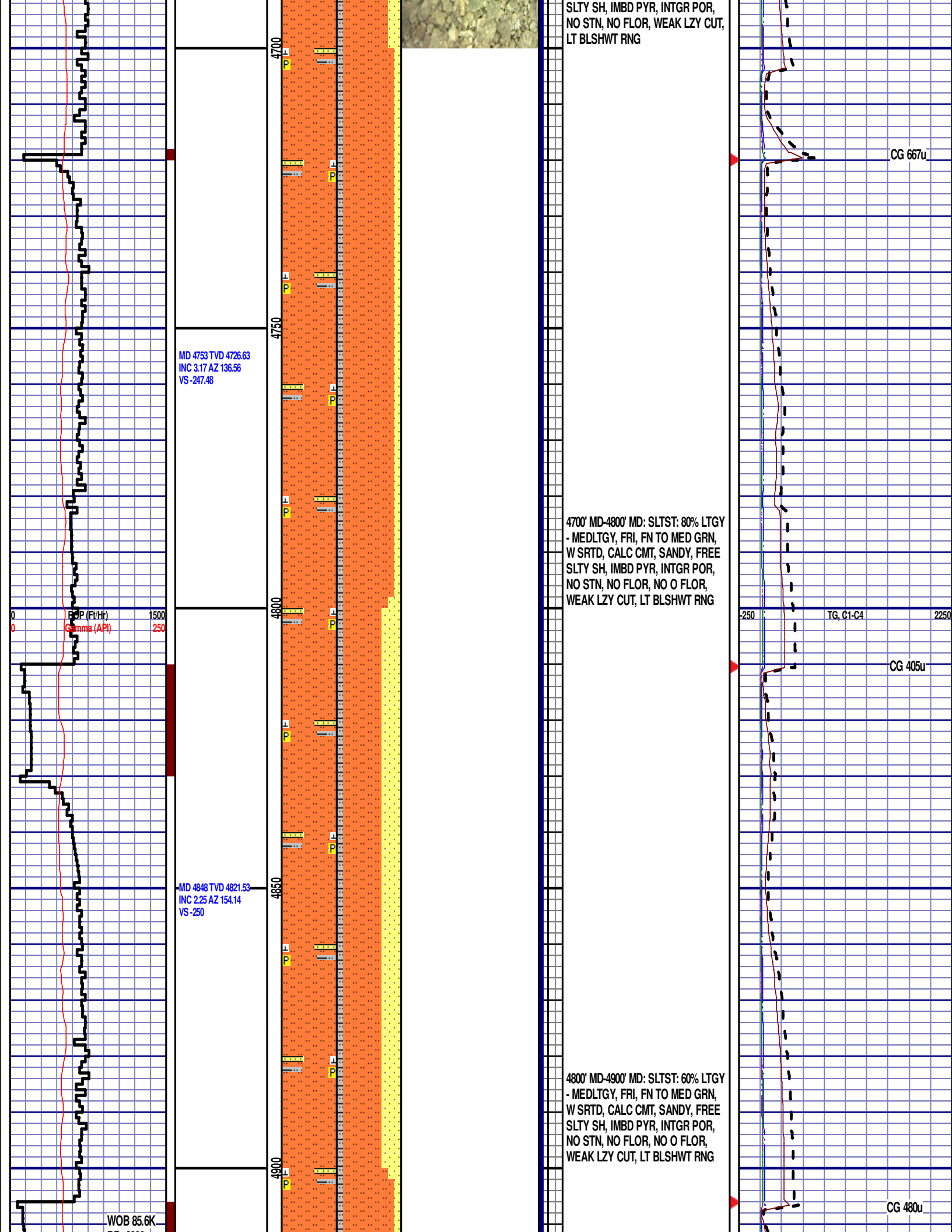
4500' MD-4600' MD: SS: 50%: PRED
MEDGY - LTKGY - OPQ, LSEY -
MOD CONS, FN TO MED GRN,
SUBANG, W SRTD, CALC CMT,
IMBD PYR, FREE SLTST, FREE
SLTY SH, INTGR POR, NO STN, NO
FLOR, NO O FLOR, WEAK LZY CUT,
LT BLSHWT RNG

4600' MD-4700' MD: SLTST: 70% LTGY
- MEDLTGY, FRI, FN TO MED GRN,
W SRTD, CALC CMT, SANDY, FREE

CG 888u

TG, C1-C4

CG 432u



PP 3280
RPM 0
SPM 84/84

MD 4943 TVD 4916.49
INC 1.52 AZ 219.08
VS -249.94

4950

SUSSEX 4900' MD - 5000' MD



4900' MD-5000' MD: SLTST: 80% LTGY
- MEDLTGY, FRI, FN TO MED GRN,
W SRTD, CALC CMT, SANDY, FREE
SLTY SH, IMBD PYR, INTGR POR,
NO STN, NO FLOR, NO O FLOR,
WEAK LZY CUT, LT BLSHWT RNG

ROP (Ft/Hr)
Gamma (API)

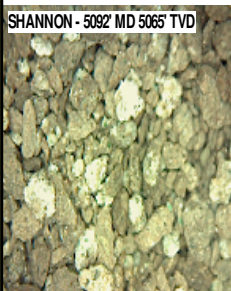
1500
250

MD 5038 TVD 5011.44
INC 1.88 AZ 211.24
VS -248.27

5050

5000' MD-5100' MD: SS: 60%: PRED
MEDGY - LTKGY - OPQ, LSEY -
MOD CONS, FN TO MED GRN,
SUBANG, W SRTD, CALC CMT,
IMBD PYR, FREE SLTST, FREE
SLTY SH, INTGR POR, NO STN, NO
FLOR, NO O FLOR, WEAK LZY CUT,
LT BLSHWT RNG

SHANNON - 5092' MD 5065' TVD



SHANNON
5092' MD 5065' TVD

5100

G, C1-C4 CG 904u 2250

CG 123u

MD 5133 TVD 5106.42
INC 0.63 AZ 152.42
VS -247.65

MD 5228 TVD 5201.41
INC 0.87 AZ 130.45
VS -248.42

MD 5322 TVD 5295.4
INC 0.87 AZ 127.24
VS -249.5

5100' MD-5200' MD: SS: 80%: PRED
MEDGY - LTKGY - OPQ, LSEY -
MOD CONS, FN TO MED GRN,
SUBANG, W SRTD, CALC CMT,
IMBD PYR, FREE SLTST, FREE
SLTY SH, INTGR POR, NO STN, NO
FLOR, NO O FLOR, WEAK LZY CUT,
LT BLSHWT RNG

SHANNON 5200' MD - 5300' MD

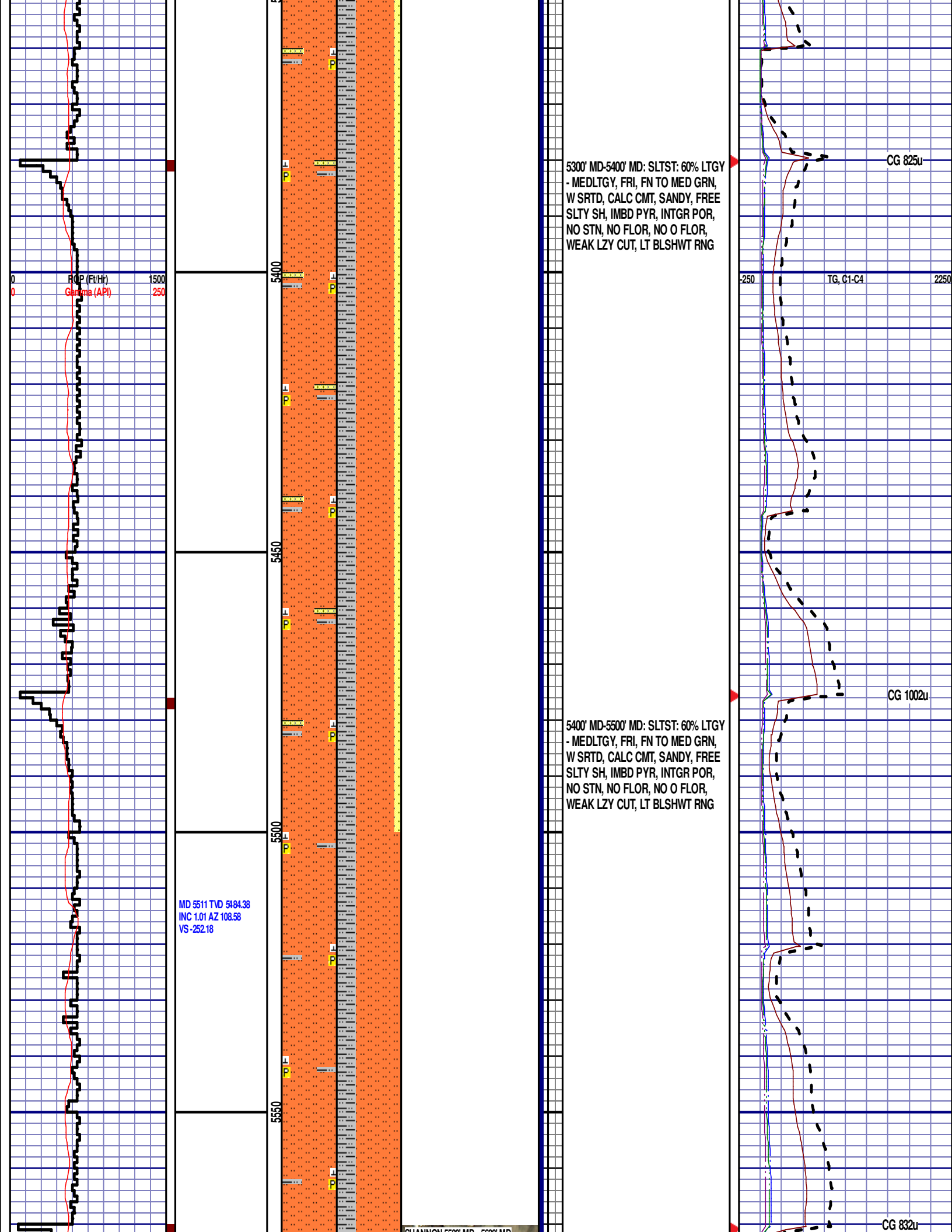


5200' MD-5300' MD: SLTST: 60% LTGY
- MEDLTGY, FRI, FN TO MED GRN,
W SRTD, CALC CMT, SANDY, FREE
SLTY SH, IMBD PYR, INTGR POR,
NO STN, NO FLOR, NO O FLOR,
WEAK LZY CUT, LT BLSHWT RNG

CG 1103u

TG, C1-C4

CG 727u



5300' MD-5400' MD: SLTST: 60% LTGY
- MEDLTGY, FRI, FN TO MED GRN,
W SRTD, CALC CMT, SANDY, FREE
SLTY SH, IMBD PYR, INTGR POR,
NO STN, NO FLOR, NO O FLOR,
WEAK LZV CUT, LT BLSHWT RNG

CG 825u

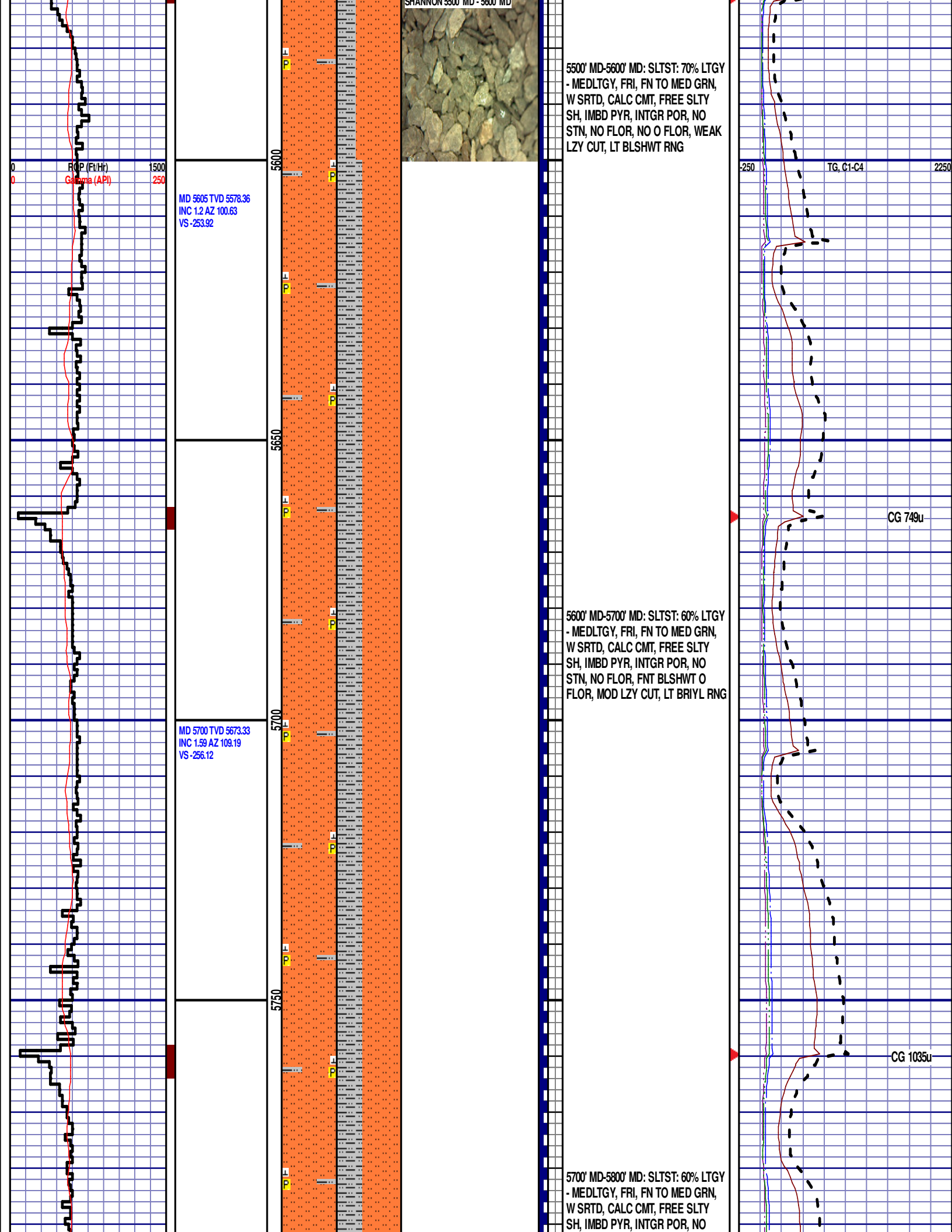
TG, C1-C4

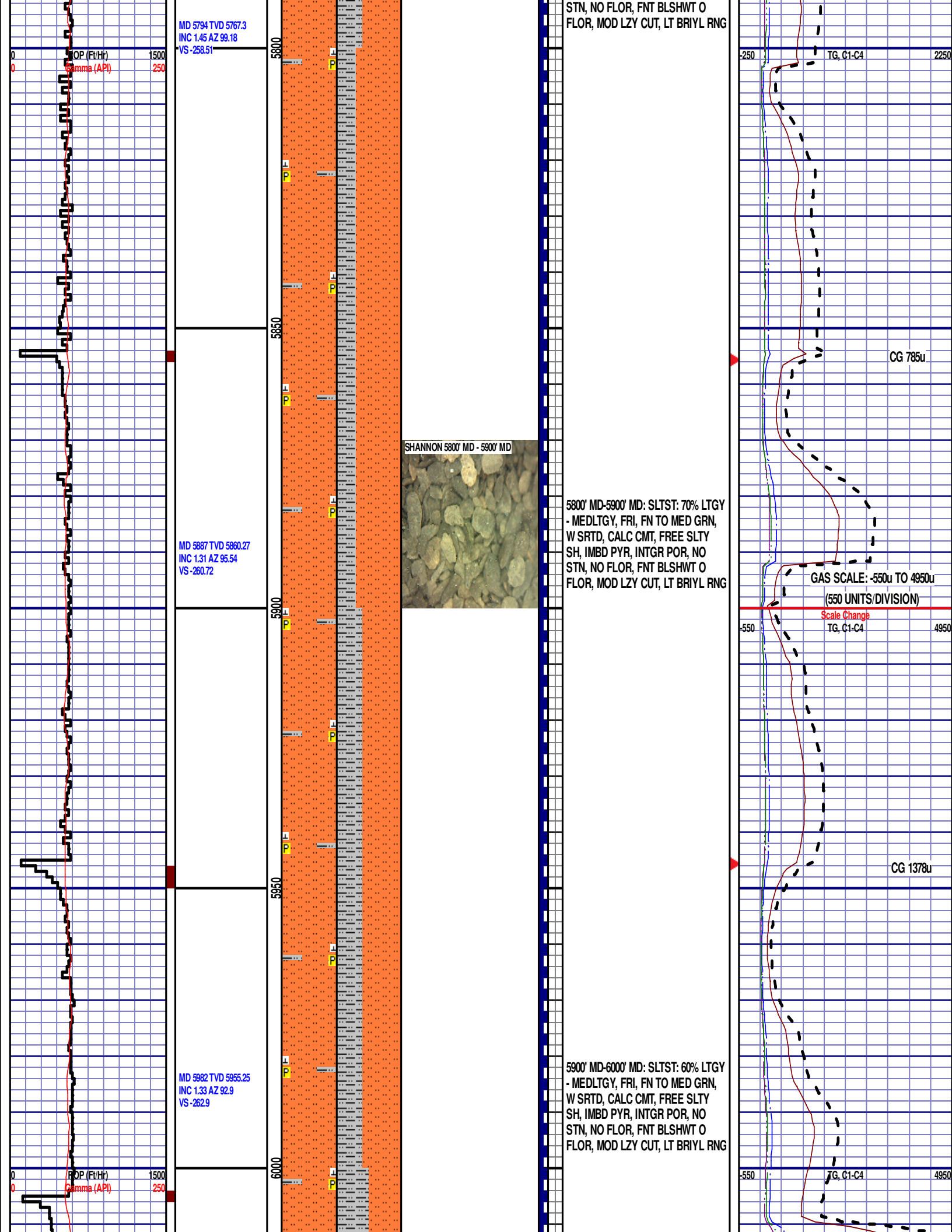
CG 1002u

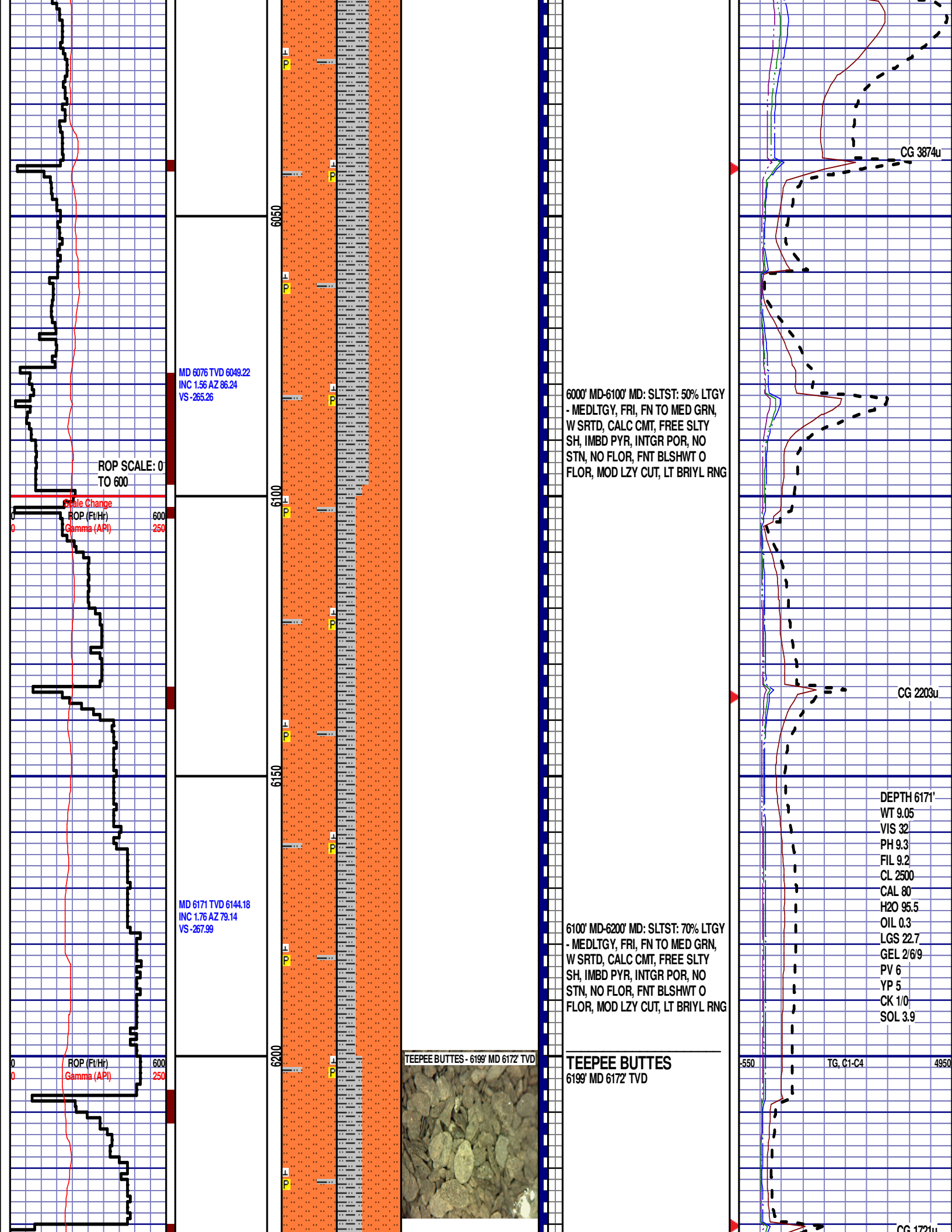
5400' MD-5500' MD: SLTST: 60% LTGY
- MEDLTGY, FRI, FN TO MED GRN,
W SRTD, CALC CMT, SANDY, FREE
SLTY SH, IMBD PYR, INTGR POR,
NO STN, NO FLOR, NO O FLOR,
WEAK LZV CUT, LT BLSHWT RNG

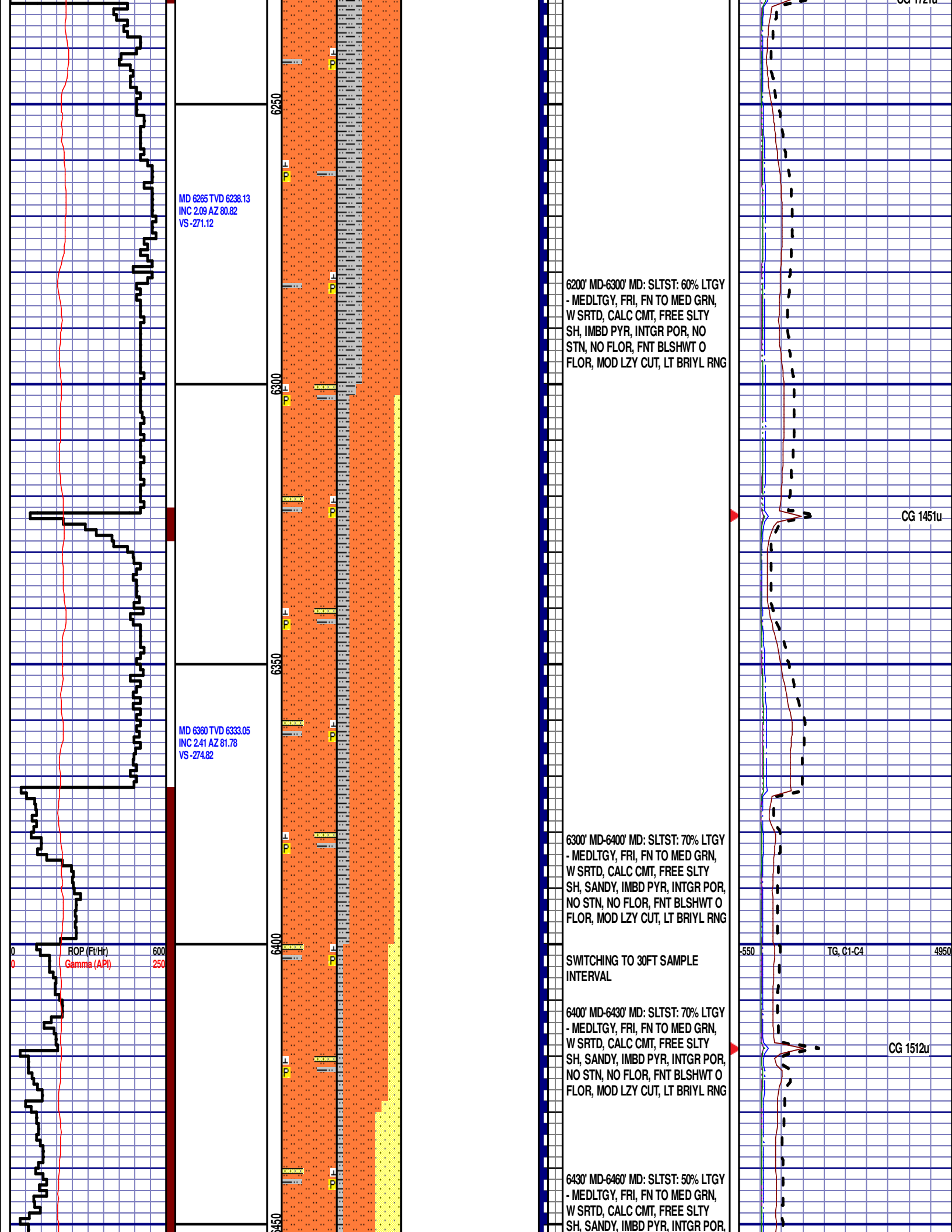
CG 832u

MD 5511 TVD 5484.38
INC 1.01 AZ 108.58
VS -252.18









MD 6454 TVD 6426.98
INC 2.02 AZ 65.54
VS -278.31

WOB 18.1K
PP 3437
RPM 0
SPM 78/78

MD 6549 TVD 6521.96
INC 1.21 AZ 328.25
VS -279.35

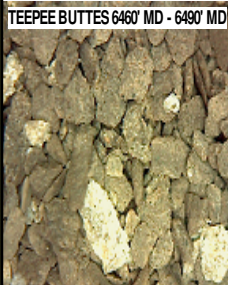
WOB 11.0K
PP 3423
RPM 0
SPM 79/78

ROP (Ft/Hr) 600
Gamma (API) 250

12:01AM
9/27/2014
DAY 03
4109 FT/24HRS

MD 6644 TVD 6616.71
INC 6.62 AZ 276.03
VS -273.42

TEEPEE BUTTES 6460' MD - 6490' MD



NO STN, NO FLOR, FNT BLSHWT O
FLOR, MOD LZ Y CUT, LT BRIYL RNG

6460' MD-6490' MD: SLTST: 60% LTGY
- MEDLTGY, FRI, FN TO MED GRN,
W SRTD, CALC CMT, FREE SLTY
SH, SANDY, IMBD PYR, INTGR POR,
NO STN, NO FLOR, FNT BLSHWT O
FLOR, MOD LZ Y CUT, LT BRIYL RNG

6490' MD-6520' MD: SLTST: 70% LTGY
- MEDLTGY, FRI, FN TO MED GRN,
W SRTD, CALC CMT, FREE SLTY
SH, SANDY, IMBD PYR, INTGR POR,
NO STN, NO FLOR, FNT BLSHWT O
FLOR, MOD LZ Y CUT, LT BRIYL RNG

6520' MD-6550' MD: SLTST: 80% LTGY
- MEDLTGY, FRI, FN TO MED GRN,
W SRTD, CALC CMT, FREE SLTY
SH, SANDY, IMBD PYR, INTGR POR,
NO STN, NO FLOR, FNT BLSHWT O
FLOR, MOD LZ Y CUT, LT BRIYL RNG

6550' MD-6580' MD: SLTST: 70% LTGY
- MEDLTGY, FRI, FN TO MED GRN,
W SRTD, CALC CMT, FREE SLTY
SH, SANDY, IMBD PYR, INTGR POR,
NO STN, NO FLOR, FNT BLSHWT O
FLOR, MOD LZ Y CUT, LT BRIYL RNG

6580' MD-6610' MD: SLTST: 70% LTGY
- MEDLTGY, FRI, FN TO MED GRN,
W SRTD, CALC CMT, FREE SLTY
SH, SANDY, IMBD PYR, INTGR POR,
NO STN, NO FLOR, FNT BLSHWT O
FLOR, MOD LZ Y CUT, LT BRIYL RNG

TOOH @ 6:30 PM ON 9/26/14 @ 6609'
MD FOR NEW MOTOR. TIH @ 10:15
PM ON 9/26/2014. RESUMED
DRILLING @ 1:05 AM ON 9/27/2014
W/ BIT #3, 8.75", HDBS, MMD55M,
S/N 12512408 @ 6609' MD.

6610' MD-6640' MD: SLTST: 60% LTGY
- MEDLTGY, FRI, FN TO MED GRN,
W SRTD, CALC CMT, FREE SLTY
SH, SANDY, IMBD PYR, INTGR POR,
NO STN, NO FLOR, FNT BLSHWT O
FLOR, MOD LZ Y CUT, LT BRIYL RNG

6640' MD-6670' MD: SLTST: 70% LTGY
- MEDLTGY, FRI, FN TO MED GRN,
W SRTD, CALC CMT, FREE SLTY
SH, SANDY, IMBD PYR, INTGR POR,
NO STN, NO FLOR, FNT BLSHWT O
FLOR, MOD LZ Y CUT, LT BRIYL RNG

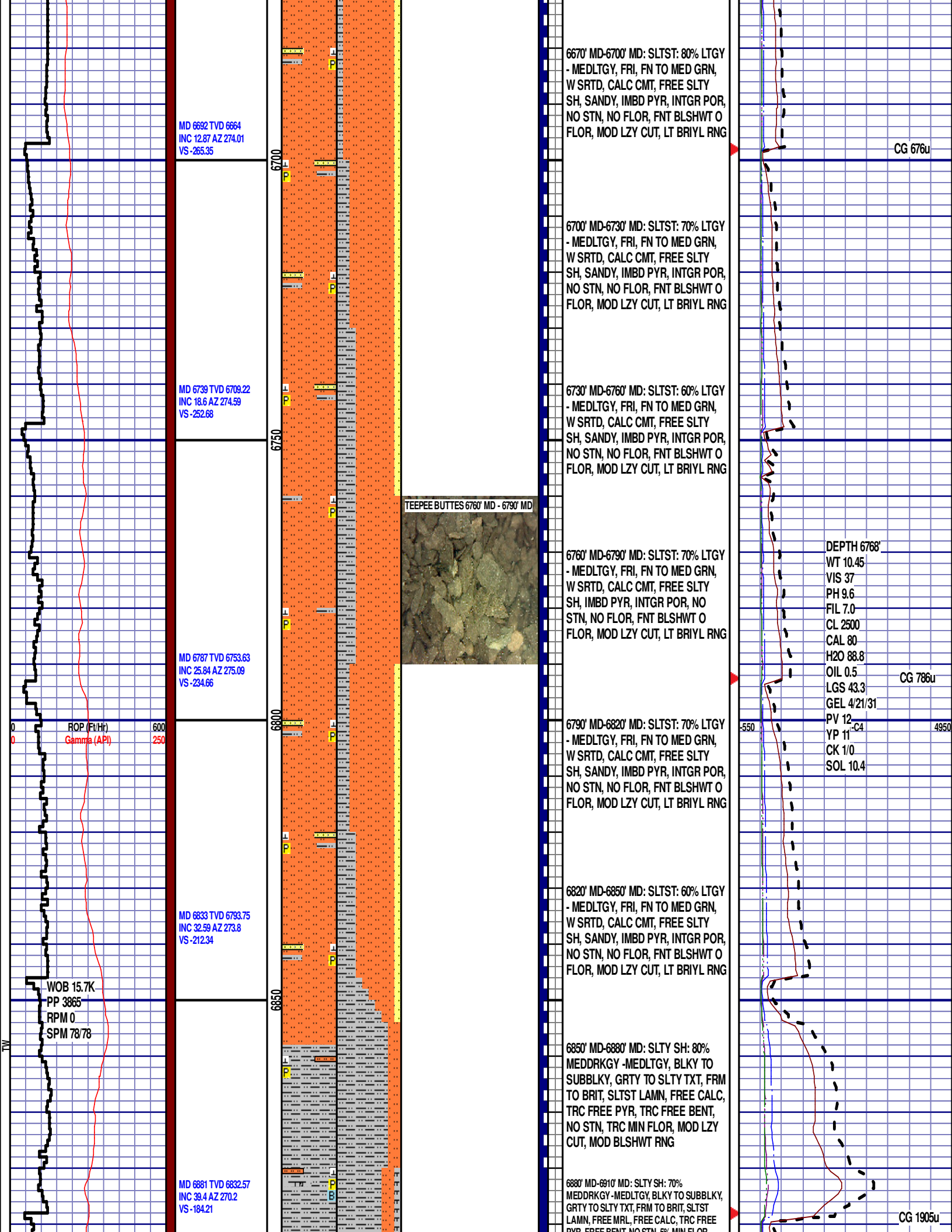
CG 2681u

NEW PIPE TALLY

TG, C1-C4 4950

CG 484u

TG 443u



CG 3517u