

0 500 1000 2000

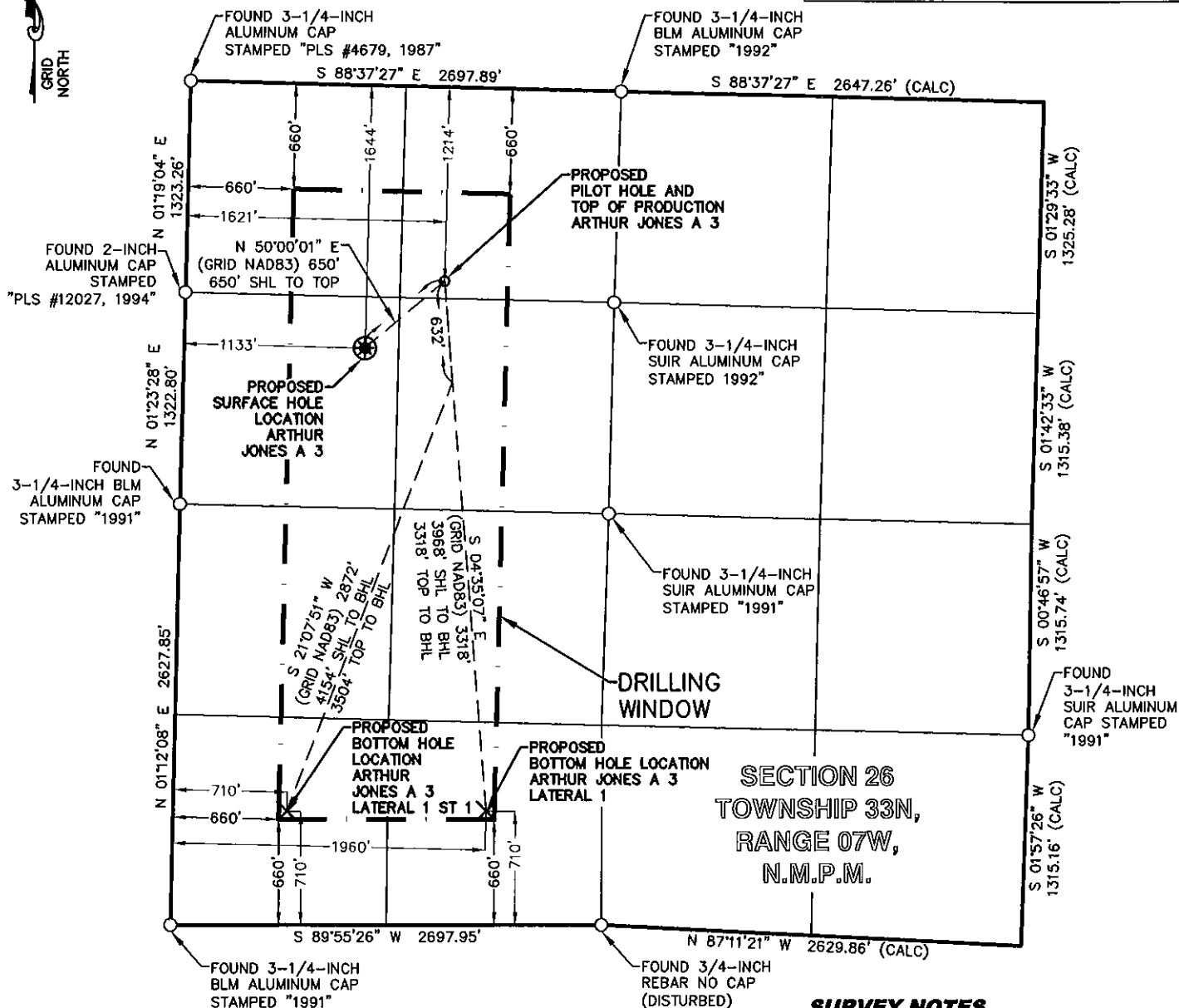
GRAPHIC SCALE IN FEET

## LEGEND

FOUND MONUMENT ○

PROPOSED SURFACE HOLE LOCATION \*

PROPOSED BOTTOM HOLE LOCATION x



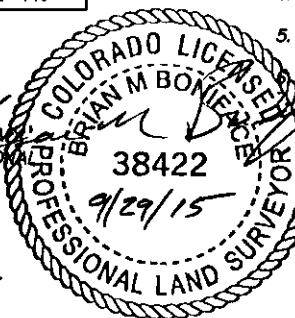
ARTHUR JONES A 3	CSZ NAD'83	NAD'83	TIES	ELEVATION
PROPOSED SURFACE HOLE LOCATION (SHL)	N (Y) = 1,156,462.25' E (X) = 2,392,254.18'	LAT. = 37.07774944°N LON. = 107.58331928°W	FNL = 1644' FWL = 1133'	EXISTING GROUND 6502.32'
PROPOSED PILOT/TOP OF PRODUCTION (TOP)	N (Y) = 1,156,880.06' E (X) = 2,392,752.11'	LAT. = 37.07892711°N LON. = 107.58164488°W	FNL = 1214' FWL = 1621'	PROPOSED GRADE 6502.96'
PROPOSED BOTTOM HOLE LOCATION (BHL) LAT 1	N (Y) = 1,153,572.84' E (X) = 2,393,017.34'	LAT. = 37.06986270°N LON. = 107.58048350°W	FSL = 710' FWL = 1960'	
PROPOSED BOTTOM HOLE LOCATION (BHL) LAT 1 ST 1	N (Y) = 1,153,571.18' E (X) = 2,391,767.35'	LAT. = 37.06978161°N LON. = 107.58476640°W	FSL = 710' FWL = 710'	

## SURVEY NOTES

1. BEARING BASIS FOR THIS SURVEY IS BASED ON THE NORTH AMERICAN DATUM OF 1983, COLORADO STATE PLANE COORDINATE SYSTEM, COLORADO SOUTH, ZONE 0503.
  2. ELEVATION BASIS FOR THIS SURVEY IS BASED ON THE NORTH AMERICAN VERTICAL DATUM OF 1988 (GEOID12A).
  3. SURVEYED IN THE FIELD ON 08/18/2015.
  4. BEARINGS AND DISTANCE SHOWN ARE MEASURED IN THE FIELD UNLESS OTHERWISE NOTED.
  5. ALL MEASURED DISTANCES SHOWN ARE GRID USING A COMBINED SCALE FACTOR 0.99972116.
- GPS INSTRUMENT OPERATOR: RYAN BARTHEL  
GPS PDOP VALUE: 1.6

## SURVEYOR'S CERTIFICATE

I, BRIAN M. BONIFACE, A PROFESSIONAL LAND SURVEYOR IN THE STATE OF COLORADO, DO HEREBY CERTIFY THAT THIS PLAT WAS PREPARED FROM AN ACTUAL SURVEY PERFORMED BY ME OR UNDER MY DIRECT RESPONSIBILITY, SUPERVISION AND CHECKING, AND IS TRUE AND CORRECT TO THE BEST OF MY KNOWLEDGE AND BELIEF BASED ON THE STANDARDS OF CARE OF PROFESSIONAL LAND SURVEYORS PRACTICING IN THE STATE OF COLORADO. THIS DOES NOT REPRESENT A LAND SURVEY PLAT, IMPROVEMENT SURVEY PLAT, OR MONUMENTED LAND SURVEY AS DEFINED BY COLORADO REVISED STATUTES 38-51-102 AND CANNOT BE RELIED UPON TO DETERMINE OWNERSHIP. THIS SURVEY IS NOT A GUARANTY OR WARRANTY, EITHER EXPRESSED OR IMPLIED.



BP AMERICA  
PRODUCTION COMPANY  
US LOWER 48 ONSHORE

## WELL LOCATION PLAT

ARTHUR JONES A 3

PART OF  
SECTION 26, TOWNSHIP 33N, RANGE 07W,  
N.M.P.M.  
LA PLATA COUNTY, COLORADO

DRAWN BY	CHECKED BY	SCALE	DATE	SHEET	REVISION
CFW/RLM	BMB	1"=1000'	09/29/2015	1 OF 1	