

# BONANZA CREEK OIL COMPANY

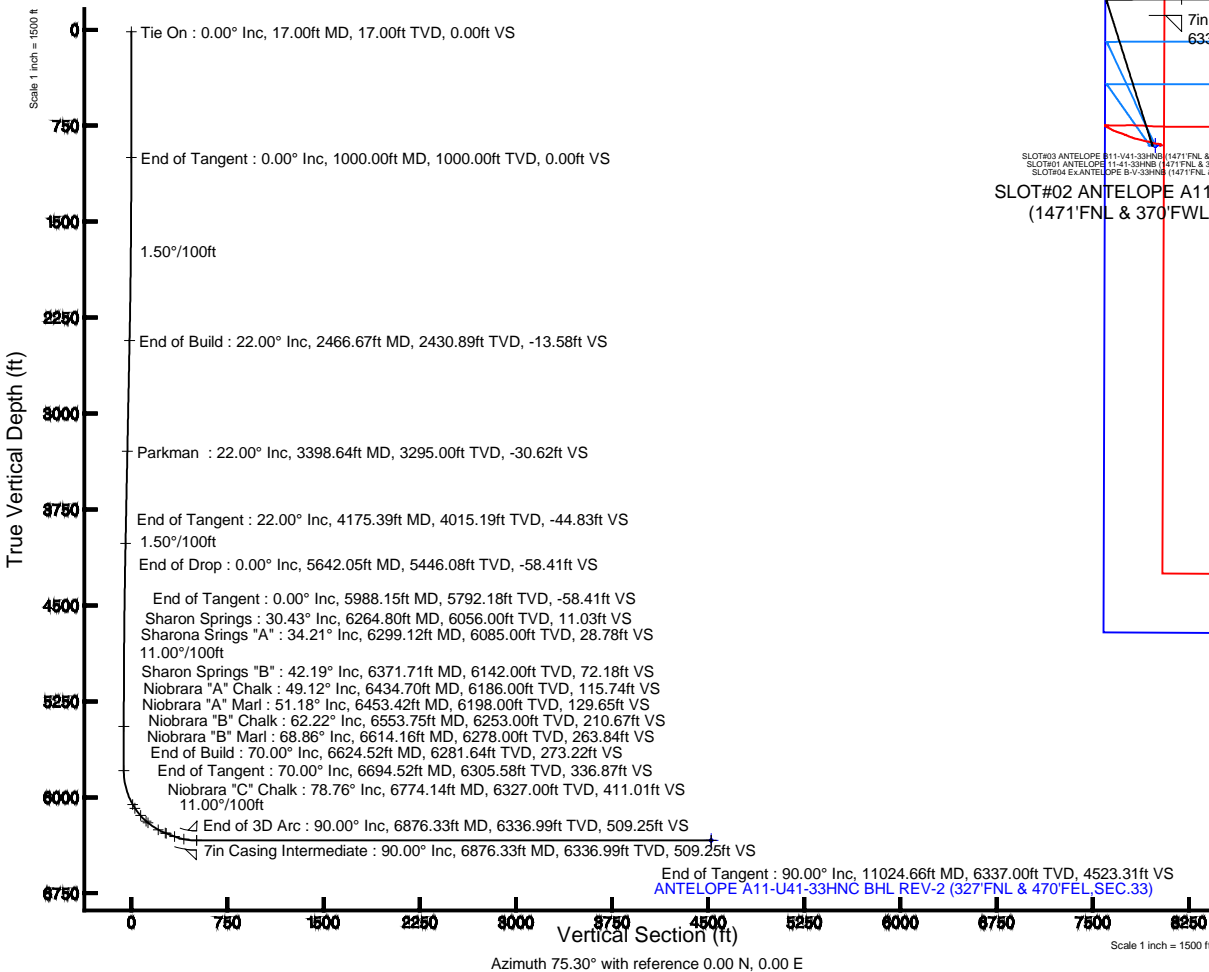
Location: COLORADO Slot: SLOT#02 ANTELOPE A11-U41-33HNC (1471°FNL & 370°FWL,SEC.33)  
Field: WELD COUNTY Well: ANTELOPE A11-U41-33HNC  
Facility: SEC.33-T5N-R62W Wellbore: ANTELOPE A11-U41-33HNC PWB

Plot reference wellpath is ANTELOPE A11-U41-33HNC (REV-B.0) PWP

|  |  |
|--|--|
| True vertical depths are referenced to RIG (RKB)   | Grid System: NAD83 / Lambert Colorado SP, Northern Zone (501), US feet |
| Measured depths are referenced to RIG (RKB)  | North Reference: True north  |
| RIG (RKB) to Mean Sea Level: 4596 feet   | Scale: True distance   |
| Mean Sea Level to Mud line (At Slot: SLOT#02 ANTELOPE A11-U41-33HNC (1471°FNL & 370°FWL,SEC.33)): 0 feet | Depths are in feet   |
| Coordinates are in feet referenced to Slot   | Created by: guesaler on 4/14/2014                                      |

## Location Information

| Facility Name   |             |             | Grid East (US R) | Grid North (US R) | Latitude       | Longitude       |
|---|-------------|-------------|------------------|-------------------|----------------|-----------------|
| SEC.33-T5N-R62W   |             |             | 3324131.293      | 1375892.189       | 40°21'33.804"N | 104°20'12.696"W |
| Slot  | Local N (R) | Local E (R) | Grid East (US R) | Grid North (US R) | Latitude       | Longitude       |
| SLOT#02 ANTELOPE A11-U41-33HNC (1471 FNL & 370FWL,SEC.33)                                       | 0.00        | -22.30      | 3324109.000      | 1375891.897       | 40°21'33.804"N | 104°20'12.984"W |
| RIG (RKB) to Mud line (At Slot: SLOT#02 ANTELOPE A11-U41-33HNC (1471 FNL & 370FWL,SEC.33))      |             |             |                  |                   | 4596ft         |                 |
| Mean Sea Level to Mud line (At Slot: SLOT#02 ANTELOPE A11-U41-33HNC (1471 FNL & 370FWL,SEC.33)) |             |             |                  |                   | 0ft            |                 |
| RIG (RKB) to Mean Sea Level   |             |             |                  |                   | 4596ft         |                 |

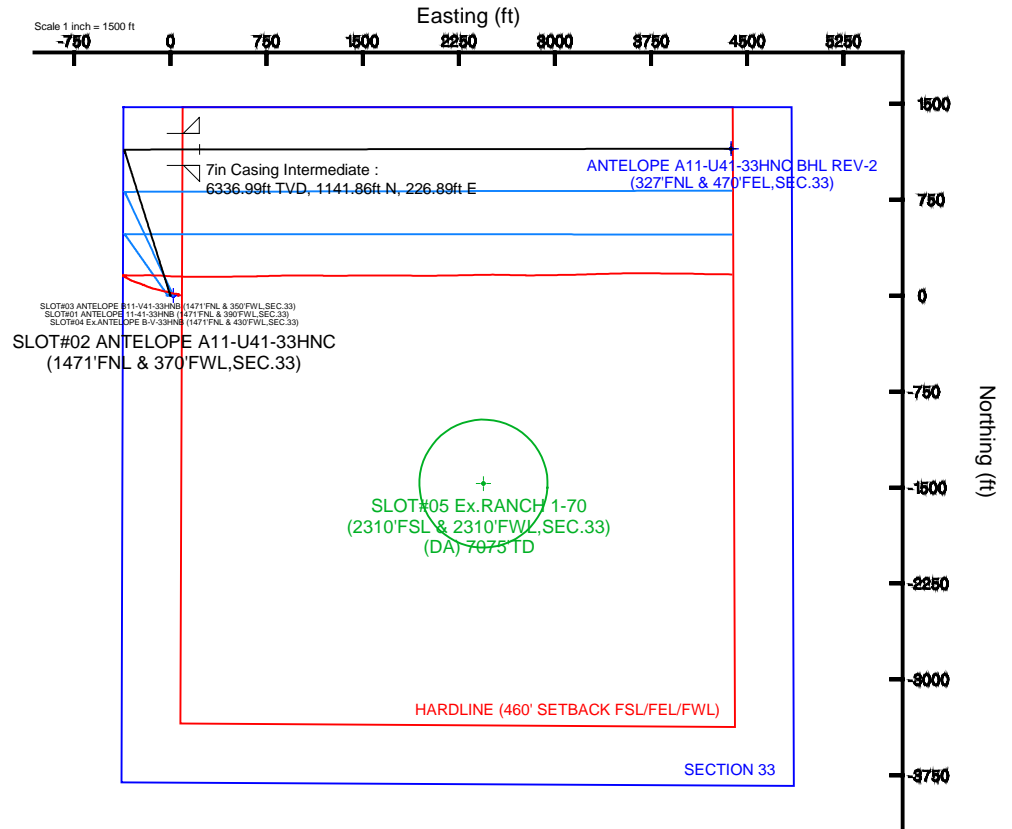


## Well Profile Data

| Design Comment | MD (ft)  | Inc (°) | Az (°)  | TVD (ft) | Local N (ft) | Local E (ft) | DLS (°/100ft) | VS (ft) |
|----------------|----------|---------|---------|----------|--------------|--------------|---------------|---------|
| Tie On         | 17.00    | 0.000   | 342.500 | 17.00    | 0.00         | 0.00         | 0.00          | 0.00    |
| End of Tangent | 1000.00  | 0.000   | 342.500 | 1000.00  | 0.00         | 0.00         | 0.00          | 0.00    |
| End of Build   | 2466.67  | 22.000  | 342.500 | 2430.89  | 265.26       | -83.64       | 1.50          | -13.58  |
| End of Tangent | 4175.39  | 22.000  | 342.500 | 4015.19  | 875.74       | -276.12      | 0.00          | -44.83  |
| End of Drop    | 5642.05  | 0.000   | 89.916  | 5446.08  | 1141.00      | -359.76      | 1.50          | -58.41  |
| End of Tangent | 5988.15  | 0.000   | 89.916  | 5792.18  | 1141.00      | -359.76      | 0.00          | -58.41  |
| End of Build   | 6624.52  | 70.000  | 89.916  | 6281.64  | 1141.50      | -17.03       | 11.00         | 273.22  |
| End of Tangent | 6694.52  | 70.000  | 89.916  | 6305.58  | 1141.60      | 48.74        | 0.00          | 336.87  |
| End of 3D Arc  | 6876.33  | 90.000  | 89.916  | 6336.99  | 1141.86      | 226.89       | 11.00         | 509.25  |
| End of Tangent | 11024.66 | 90.000  | 89.916  | 6337.00  | 1147.96      | 4375.22      | 0.00          | 4523.31 |

## Survey Program

| Start MD (ft) | End MD (ft) | Tool      | Model                | Log Name/Comment | Wellbore                   |
|---------------|-------------|-----------|----------------------|------------------|----------------------------|
| 17.00         | 11024.66    | NavitTrak | NavitTrak (Standard) |                  | ANTELOPE A11-U41-33HNC PWB |





# Planned Wellpath Report

ANTELOPE A11-U41-33HNC (REV-B.0) PWP  
Page 1 of 8



## REFERENCE WELLPATH IDENTIFICATION

|          |                           |          |  |
|----------|---------------------------|----------|--|
| Operator | BONANZA CREEK OIL COMPANY | Slot     | SLOT#02 ANTELOPE A11-U41-33HNC (1471'FNL & 370'FWL,SEC.33) |
| Area     | COLORADO                  | Well     | ANTELOPE A11-U41-33HNC                                     |
| Field    | WELD COUNTY               | Wellbore | ANTELOPE A11-U41-33HNC PWB                                 |
| Facility | SEC.33-T5N-R62W           |          |  |

## REPORT SETUP INFORMATION

|                     |   |                      |  |
|---------------------|---|----------------------|--|
| Projection System   | NAD83 / Lambert Colorado SP, Northern Zone (501), US feet | Software System      | WellArchitect® 4.0.0                     |
| North Reference     | True  | User                 | Guenaler                                 |
| Scale               | 0.999959  | Report Generated     | 4/14/2014 at 4:03:36 PM                  |
| Convergence at slot | n/a   | Database/Source file | WA_Denver/ANTELOPE_A11-U41-33HNC_PWB.xml |

## WELLPATH LOCATION

|                       | Local coordinates |          | Grid coordinates |                 | Geographic coordinates |                 |
|-----------------------|-------------------|----------|------------------|-----------------|------------------------|-----------------|
|                       | North[ft]         | East[ft] | Easting[US ft]   | Northing[US ft] | Latitude               | Longitude       |
| Slot Location         | 0.00              | -22.30   | 3324109.00       | 1375891.90      | 40°21'33.804"N         | 104°20'12.984"W |
| Facility Reference Pt |                   |          | 3324131.29       | 1375892.19      | 40°21'33.804"N         | 104°20'12.696"W |
| Field Reference Pt    |                   |          | 3327718.19       | 1377782.99      | 40°21'52.020"N         | 104°19'26.040"W |

## WELLPATH DATUM

|                          |                   |  |                   |
|--------------------------|-------------------|--|-------------------|
| Calculation method       | Minimum curvature | RIG (RKB) to Facility Vertical Datum   | 4596.00ft         |
| Horizontal Reference Pt  | Slot              | RIG (RKB) to Mean Sea Level  | 4596.00ft         |
| Vertical Reference Pt    | RIG (RKB)         | RIG (RKB) to Mud Line at Slot (SLOT#02 ANTELOPE A11-U41-33HNC (1471'FNL & 370'FWL,SEC.33)) | 4596.00ft         |
| MD Reference Pt          | RIG (RKB)         | Section Origin   | N 0.00, E 0.00 ft |
| Field Vertical Reference | Mean Sea Level    | Section Azimuth  | 75.30°            |



# Planned Wellpath Report

ANTELOPE A11-U41-33HNC (REV-B.0) PWP

Page 2 of 8



## REFERENCE WELLPATH IDENTIFICATION

|          |                           |          |  |
|----------|---------------------------|----------|--|
| Operator | BONANZA CREEK OIL COMPANY | Slot     | SLOT#02 ANTELOPE A11-U41-33HNC (1471'FNL & 370'FWL,SEC.33) |
| Area     | COLORADO                  | Well     | ANTELOPE A11-U41-33HNC                                     |
| Field    | WELD COUNTY               | Wellbore | ANTELOPE A11-U41-33HNC PWB                                 |
| Facility | SEC.33-T5N-R62W           |          |  |

## WELLPATH DATA (130 stations) † = interpolated/extrapolated station

| MD<br>[ft] | Inclination<br>[°] | Azimuth<br>[°] | TVD<br>[ft] | Vert Sect<br>[ft] | North<br>[ft] | East<br>[ft] | Latitude       | Longitude       | DLS<br>[°/100ft] | Comments       |
|------------|--------------------|----------------|-------------|-------------------|---------------|--------------|----------------|-----------------|------------------|----------------|
| 0.00†      | 0.000              | 342.500        | 0.00        | 0.00              | 0.00          | 0.00         | 40°21'33.804"N | 104°20'12.984"W | 0.00             |                |
| 17.00      | 0.000              | 342.500        | 17.00       | 0.00              | 0.00          | 0.00         | 40°21'33.804"N | 104°20'12.984"W | 0.00             | Tie On         |
| 117.00†    | 0.000              | 342.500        | 117.00      | 0.00              | 0.00          | 0.00         | 40°21'33.804"N | 104°20'12.984"W | 0.00             |                |
| 217.00†    | 0.000              | 342.500        | 217.00      | 0.00              | 0.00          | 0.00         | 40°21'33.804"N | 104°20'12.984"W | 0.00             |                |
| 317.00†    | 0.000              | 342.500        | 317.00      | 0.00              | 0.00          | 0.00         | 40°21'33.804"N | 104°20'12.984"W | 0.00             |                |
| 417.00†    | 0.000              | 342.500        | 417.00      | 0.00              | 0.00          | 0.00         | 40°21'33.804"N | 104°20'12.984"W | 0.00             |                |
| 517.00†    | 0.000              | 342.500        | 517.00      | 0.00              | 0.00          | 0.00         | 40°21'33.804"N | 104°20'12.984"W | 0.00             |                |
| 617.00†    | 0.000              | 342.500        | 617.00      | 0.00              | 0.00          | 0.00         | 40°21'33.804"N | 104°20'12.984"W | 0.00             |                |
| 717.00†    | 0.000              | 342.500        | 717.00      | 0.00              | 0.00          | 0.00         | 40°21'33.804"N | 104°20'12.984"W | 0.00             |                |
| 817.00†    | 0.000              | 342.500        | 817.00      | 0.00              | 0.00          | 0.00         | 40°21'33.804"N | 104°20'12.984"W | 0.00             |                |
| 917.00†    | 0.000              | 342.500        | 917.00      | 0.00              | 0.00          | 0.00         | 40°21'33.804"N | 104°20'12.984"W | 0.00             |                |
| 1000.00    | 0.000              | 342.500        | 1000.00     | 0.00              | 0.00          | 0.00         | 40°21'33.804"N | 104°20'12.984"W | 0.00             | End of Tangent |
| 1017.00†   | 0.255              | 342.500        | 1017.00     | 0.00              | 0.04          | -0.01        | 40°21'33.804"N | 104°20'12.984"W | 1.50             |                |
| 1117.00†   | 1.755              | 342.500        | 1116.98     | -0.09             | 1.71          | -0.54        | 40°21'33.821"N | 104°20'12.991"W | 1.50             |                |
| 1217.00†   | 3.255              | 342.500        | 1216.88     | -0.30             | 5.88          | -1.85        | 40°21'33.862"N | 104°20'13.008"W | 1.50             |                |
| 1317.00†   | 4.755              | 342.500        | 1316.64     | -0.64             | 12.54         | -3.95        | 40°21'33.928"N | 104°20'13.035"W | 1.50             |                |
| 1417.00†   | 6.255              | 342.500        | 1416.17     | -1.11             | 21.69         | -6.84        | 40°21'34.018"N | 104°20'13.072"W | 1.50             |                |
| 1517.00†   | 7.755              | 342.500        | 1515.42     | -1.71             | 33.32         | -10.51       | 40°21'34.133"N | 104°20'13.120"W | 1.50             |                |
| 1617.00†   | 9.255              | 342.500        | 1614.32     | -2.43             | 47.42         | -14.95       | 40°21'34.273"N | 104°20'13.177"W | 1.50             |                |
| 1717.00†   | 10.755             | 342.500        | 1712.80     | -3.28             | 63.99         | -20.18       | 40°21'34.436"N | 104°20'13.245"W | 1.50             |                |
| 1817.00†   | 12.255             | 342.500        | 1810.78     | -4.25             | 83.01         | -26.17       | 40°21'34.624"N | 104°20'13.322"W | 1.50             |                |
| 1917.00†   | 13.755             | 342.500        | 1908.22     | -5.35             | 104.47        | -32.94       | 40°21'34.836"N | 104°20'13.410"W | 1.50             |                |
| 2017.00†   | 15.255             | 342.500        | 2005.03     | -6.57             | 128.36        | -40.47       | 40°21'35.072"N | 104°20'13.507"W | 1.50             |                |
| 2117.00†   | 16.755             | 342.500        | 2101.15     | -7.92             | 154.66        | -48.76       | 40°21'35.332"N | 104°20'13.614"W | 1.50             |                |
| 2217.00†   | 18.255             | 342.500        | 2196.51     | -9.38             | 183.34        | -57.81       | 40°21'35.616"N | 104°20'13.731"W | 1.50             |                |
| 2317.00†   | 19.755             | 342.500        | 2291.06     | -10.97            | 214.40        | -67.60       | 40°21'35.923"N | 104°20'13.857"W | 1.50             |                |
| 2417.00†   | 21.255             | 342.500        | 2384.72     | -12.68            | 247.81        | -78.13       | 40°21'36.253"N | 104°20'13.993"W | 1.50             |                |
| 2466.67    | 22.000             | 342.500        | 2430.89     | -13.58            | 265.26        | -83.64       | 40°21'36.425"N | 104°20'14.064"W | 1.50             | End of Build   |
| 2517.00†   | 22.000             | 342.500        | 2477.56     | -14.50            | 283.25        | -89.31       | 40°21'36.603"N | 104°20'14.138"W | 0.00             |                |
| 2617.00†   | 22.000             | 342.500        | 2570.28     | -16.33            | 318.97        | -100.57      | 40°21'36.956"N | 104°20'14.283"W | 0.00             |                |



# Planned Wellpath Report

ANTELOPE A11-U41-33HNC (REV-B.0) PWP

Page 3 of 8



## REFERENCE WELLPATH IDENTIFICATION

|          |                           |          |  |
|----------|---------------------------|----------|--|
| Operator | BONANZA CREEK OIL COMPANY | Slot     | SLOT#02 ANTELOPE A11-U41-33HNC (1471'FNL & 370'FWL,SEC.33) |
| Area     | COLORADO                  | Well     | ANTELOPE A11-U41-33HNC                                     |
| Field    | WELD COUNTY               | Wellbore | ANTELOPE A11-U41-33HNC PWB                                 |
| Facility | SEC.33-T5N-R62W           |          |  |

## WELLPATH DATA (130 stations) † = interpolated/extrapolated station

| MD<br>[ft] | Inclination<br>[°] | Azimuth<br>[°] | TVD<br>[ft] | Vert Sect<br>[ft] | North<br>[ft] | East<br>[ft] | Latitude       | Longitude       | DLS<br>[°/100ft] | Comments       |
|------------|--------------------|----------------|-------------|-------------------|---------------|--------------|----------------|-----------------|------------------|----------------|
| 2717.00†   | 22.000             | 342.500        | 2663.00     | -18.16            | 354.70        | -111.84      | 40°21'37.309"N | 104°20'14.429"W | 0.00             |                |
| 2817.00†   | 22.000             | 342.500        | 2755.72     | -19.99            | 390.43        | -123.10      | 40°21'37.662"N | 104°20'14.574"W | 0.00             |                |
| 2917.00†   | 22.000             | 342.500        | 2848.43     | -21.81            | 426.15        | -134.37      | 40°21'38.015"N | 104°20'14.720"W | 0.00             |                |
| 3017.00†   | 22.000             | 342.500        | 2941.15     | -23.64            | 461.88        | -145.63      | 40°21'38.368"N | 104°20'14.865"W | 0.00             |                |
| 3117.00†   | 22.000             | 342.500        | 3033.87     | -25.47            | 497.61        | -156.90      | 40°21'38.721"N | 104°20'15.011"W | 0.00             |                |
| 3217.00†   | 22.000             | 342.500        | 3126.59     | -27.30            | 533.33        | -168.16      | 40°21'39.074"N | 104°20'15.156"W | 0.00             |                |
| 3317.00†   | 22.000             | 342.500        | 3219.31     | -29.13            | 569.06        | -179.42      | 40°21'39.427"N | 104°20'15.302"W | 0.00             |                |
| 3398.64†   | 22.000             | 342.500        | 3295.00     | -30.62            | 598.23        | -188.62      | 40°21'39.716"N | 104°20'15.421"W | 0.00             | Parkman        |
| 3417.00†   | 22.000             | 342.500        | 3312.03     | -30.96            | 604.79        | -190.69      | 40°21'39.780"N | 104°20'15.447"W | 0.00             |                |
| 3517.00†   | 22.000             | 342.500        | 3404.74     | -32.79            | 640.52        | -201.95      | 40°21'40.133"N | 104°20'15.593"W | 0.00             |                |
| 3617.00†   | 22.000             | 342.500        | 3497.46     | -34.62            | 676.24        | -213.22      | 40°21'40.486"N | 104°20'15.738"W | 0.00             |                |
| 3717.00†   | 22.000             | 342.500        | 3590.18     | -36.44            | 711.97        | -224.48      | 40°21'40.839"N | 104°20'15.884"W | 0.00             |                |
| 3817.00†   | 22.000             | 342.500        | 3682.90     | -38.27            | 747.70        | -235.75      | 40°21'41.192"N | 104°20'16.029"W | 0.00             |                |
| 3917.00†   | 22.000             | 342.500        | 3775.62     | -40.10            | 783.42        | -247.01      | 40°21'41.546"N | 104°20'16.175"W | 0.00             |                |
| 4017.00†   | 22.000             | 342.500        | 3868.34     | -41.93            | 819.15        | -258.28      | 40°21'41.899"N | 104°20'16.320"W | 0.00             |                |
| 4117.00†   | 22.000             | 342.500        | 3961.05     | -43.76            | 854.88        | -269.54      | 40°21'42.252"N | 104°20'16.466"W | 0.00             |                |
| 4175.39    | 22.000             | 342.500        | 4015.19     | -44.83            | 875.74        | -276.12      | 40°21'42.458"N | 104°20'16.551"W | 0.00             | End of Tangent |
| 4217.00†   | 21.376             | 342.500        | 4053.86     | -45.58            | 890.40        | -280.74      | 40°21'42.603"N | 104°20'16.611"W | 1.50             |                |
| 4317.00†   | 19.876             | 342.500        | 4147.44     | -47.30            | 924.00        | -291.34      | 40°21'42.935"N | 104°20'16.747"W | 1.50             |                |
| 4417.00†   | 18.376             | 342.500        | 4241.92     | -48.90            | 955.24        | -301.19      | 40°21'43.243"N | 104°20'16.875"W | 1.50             |                |
| 4517.00†   | 16.876             | 342.500        | 4337.22     | -50.38            | 984.12        | -310.29      | 40°21'43.529"N | 104°20'16.992"W | 1.50             |                |
| 4617.00†   | 15.376             | 342.500        | 4433.29     | -51.73            | 1010.61       | -318.64      | 40°21'43.791"N | 104°20'17.100"W | 1.50             |                |
| 4717.00†   | 13.876             | 342.500        | 4530.04     | -52.96            | 1034.69       | -326.24      | 40°21'44.028"N | 104°20'17.198"W | 1.50             |                |
| 4817.00†   | 12.376             | 342.500        | 4627.43     | -54.07            | 1056.35       | -333.07      | 40°21'44.243"N | 104°20'17.287"W | 1.50             |                |
| 4917.00†   | 10.876             | 342.500        | 4725.37     | -55.06            | 1075.57       | -339.13      | 40°21'44.432"N | 104°20'17.365"W | 1.50             |                |
| 5017.00†   | 9.376              | 342.500        | 4823.81     | -55.91            | 1092.33       | -344.41      | 40°21'44.598"N | 104°20'17.433"W | 1.50             |                |
| 5117.00†   | 7.876              | 342.500        | 4922.68     | -56.65            | 1106.64       | -348.92      | 40°21'44.739"N | 104°20'17.491"W | 1.50             |                |
| 5217.00†   | 6.376              | 342.500        | 5021.90     | -57.25            | 1118.47       | -352.65      | 40°21'44.856"N | 104°20'17.540"W | 1.50             |                |
| 5317.00†   | 4.876              | 342.500        | 5121.42     | -57.73            | 1127.82       | -355.60      | 40°21'44.949"N | 104°20'17.578"W | 1.50             |                |
| 5417.00†   | 3.376              | 342.500        | 5221.16     | -58.08            | 1134.68       | -357.76      | 40°21'45.017"N | 104°20'17.606"W | 1.50             |                |



# Planned Wellpath Report

ANTELOPE A11-U41-33HNC (REV-B.0) PWP

Page 4 of 8



## REFERENCE WELLPATH IDENTIFICATION

|          |                           |          |  |
|----------|---------------------------|----------|--|
| Operator | BONANZA CREEK OIL COMPANY | Slot     | SLOT#02 ANTELOPE A11-U41-33HNC (1471'FNL & 370'FWL,SEC.33) |
| Area     | COLORADO                  | Well     | ANTELOPE A11-U41-33HNC                                     |
| Field    | WELD COUNTY               | Wellbore | ANTELOPE A11-U41-33HNC PWB                                 |
| Facility | SEC.33-T5N-R62W           |          |  |

## WELLPATH DATA (130 stations) † = interpolated/extrapolated station

| MD<br>[ft] | Inclination<br>[°] | Azimuth<br>[°] | TVD<br>[ft] | Vert Sect<br>[ft] | North<br>[ft] | East<br>[ft] | Latitude       | Longitude       | DLS<br>[°/100ft] | Comments           |
|------------|--------------------|----------------|-------------|-------------------|---------------|--------------|----------------|-----------------|------------------|--------------------|
| 5517.00†   | 1.876              | 342.500        | 5321.05     | -58.31            | 1139.05       | -359.14      | 40°21'45.060"N | 104°20'17.623"W | 1.50             |                    |
| 5617.00†   | 0.376              | 342.500        | 5421.03     | -58.40            | 1140.92       | -359.73      | 40°21'45.078"N | 104°20'17.631"W | 1.50             |                    |
| 5642.05    | 0.000              | 89.916         | 5446.08     | -58.41            | 1141.00       | -359.76      | 40°21'45.079"N | 104°20'17.631"W | 1.50             | End of Drop        |
| 5717.00†   | 0.000              | 89.916         | 5521.03     | -58.41            | 1141.00       | -359.76      | 40°21'45.079"N | 104°20'17.631"W | 0.00             |                    |
| 5817.00†   | 0.000              | 89.916         | 5621.03     | -58.41            | 1141.00       | -359.76      | 40°21'45.079"N | 104°20'17.631"W | 0.00             |                    |
| 5917.00†   | 0.000              | 89.916         | 5721.03     | -58.41            | 1141.00       | -359.76      | 40°21'45.079"N | 104°20'17.631"W | 0.00             |                    |
| 5988.15    | 0.000              | 89.916         | 5792.18     | -58.41            | 1141.00       | -359.76      | 40°21'45.079"N | 104°20'17.631"W | 0.00             | End of Tangent     |
| 6017.00†   | 3.173              | 89.916         | 5821.01     | -57.63            | 1141.00       | -358.96      | 40°21'45.079"N | 104°20'17.621"W | 11.00            |                    |
| 6117.00†   | 14.173             | 89.916         | 5919.72     | -43.06            | 1141.02       | -343.90      | 40°21'45.079"N | 104°20'17.427"W | 11.00            |                    |
| 6217.00†   | 25.173             | 89.916         | 6013.74     | -10.54            | 1141.07       | -310.29      | 40°21'45.080"N | 104°20'16.992"W | 11.00            |                    |
| 6264.80†   | 30.431             | 89.916         | 6056.00     | 11.03             | 1141.11       | -288.00      | 40°21'45.080"N | 104°20'16.704"W | 11.00            | Sharon Springs     |
| 6299.12†   | 34.206             | 89.916         | 6085.00     | 28.78             | 1141.13       | -269.66      | 40°21'45.080"N | 104°20'16.467"W | 11.00            | Sharona Srings "A" |
| 6317.00†   | 36.173             | 89.916         | 6099.61     | 38.75             | 1141.15       | -259.35      | 40°21'45.080"N | 104°20'16.334"W | 11.00            |                    |
| 6371.71†   | 42.191             | 89.916         | 6142.00     | 72.18             | 1141.20       | -224.80      | 40°21'45.081"N | 104°20'15.888"W | 11.00            | Sharon Springs "B" |
| 6417.00†   | 47.173             | 89.916         | 6174.19     | 102.99            | 1141.24       | -192.96      | 40°21'45.081"N | 104°20'15.477"W | 11.00            |                    |
| 6434.70†   | 49.120             | 89.916         | 6186.00     | 115.74            | 1141.26       | -179.78      | 40°21'45.082"N | 104°20'15.306"W | 11.00            | Niobrara "A" Chalk |
| 6453.42†   | 51.180             | 89.916         | 6198.00     | 129.65            | 1141.28       | -165.41      | 40°21'45.082"N | 104°20'15.121"W | 11.00            | Niobrara "A" Marl  |
| 6517.00†   | 58.173             | 89.916         | 6234.74     | 179.81            | 1141.36       | -113.57      | 40°21'45.083"N | 104°20'14.451"W | 11.00            |                    |
| 6553.75†   | 62.216             | 89.916         | 6253.00     | 210.67            | 1141.41       | -81.68       | 40°21'45.083"N | 104°20'14.039"W | 11.00            | Niobrara "B" Chalk |
| 6614.16†   | 68.861             | 89.916         | 6278.00     | 263.84            | 1141.49       | -26.73       | 40°21'45.084"N | 104°20'13.329"W | 11.00            | Niobrara "B" Marl  |
| 6617.00†   | 69.173             | 89.916         | 6279.02     | 266.41            | 1141.49       | -24.08       | 40°21'45.084"N | 104°20'13.295"W | 11.00            |                    |
| 6624.52    | 70.000             | 89.916         | 6281.64     | 273.22            | 1141.50       | -17.03       | 40°21'45.084"N | 104°20'13.204"W | 11.00            | End of Build       |
| 6694.52    | 70.000             | 89.916         | 6305.58     | 336.87            | 1141.60       | 48.74        | 40°21'45.085"N | 104°20'12.354"W | 0.00             | End of Tangent     |
| 6717.00†   | 72.473             | 89.916         | 6312.81     | 357.47            | 1141.63       | 70.03        | 40°21'45.085"N | 104°20'12.079"W | 11.00            |                    |
| 6774.14†   | 78.759             | 89.916         | 6327.00     | 411.01            | 1141.71       | 125.36       | 40°21'45.086"N | 104°20'11.365"W | 11.00            | Niobrara "C" Chalk |
| 6817.00†   | 83.473             | 89.916         | 6333.62     | 451.97            | 1141.77       | 167.69       | 40°21'45.087"N | 104°20'10.818"W | 11.00            |                    |
| 6876.33    | 90.000             | 89.916         | 6336.99     | 509.25            | 1141.86       | 226.89       | 40°21'45.088"N | 104°20'10.053"W | 11.00            | End of 3D Arc      |
| 6917.00†   | 90.000             | 89.916         | 6336.99     | 548.60            | 1141.92       | 267.56       | 40°21'45.088"N | 104°20'09.528"W | 0.00             |                    |
| 7017.00†   | 90.000             | 89.916         | 6336.99     | 645.37            | 1142.07       | 367.56       | 40°21'45.090"N | 104°20'08.236"W | 0.00             |                    |
| 7117.00†   | 90.000             | 89.916         | 6336.99     | 742.13            | 1142.21       | 467.56       | 40°21'45.091"N | 104°20'06.944"W | 0.00             |                    |



# Planned Wellpath Report

## ANTELOPE A11-U41-33HNC (REV-B.0) PWP

Page 5 of 8



### REFERENCE WELLPATH IDENTIFICATION

|          |                           |          |  |
|----------|---------------------------|----------|--|
| Operator | BONANZA CREEK OIL COMPANY | Slot     | SLOT#02 ANTELOPE A11-U41-33HNC (1471'FNL & 370'FWL,SEC.33) |
| Area     | COLORADO                  | Well     | ANTELOPE A11-U41-33HNC                                     |
| Field    | WELD COUNTY               | Wellbore | ANTELOPE A11-U41-33HNC PWB                                 |
| Facility | SEC.33-T5N-R62W           |          |  |

### WELLPATH DATA (130 stations) † = interpolated/extrapolated station

| MD<br>[ft] | Inclination<br>[°] | Azimuth<br>[°] | TVD<br>[ft] | Vert Sect<br>[ft] | North<br>[ft] | East<br>[ft] | Latitude       | Longitude       | DLS<br>[°/100ft] | Comments |
|------------|--------------------|----------------|-------------|-------------------|---------------|--------------|----------------|-----------------|------------------|----------|
| 7217.00†   | 90.000             | 89.916         | 6336.99     | 838.89            | 1142.36       | 567.56       | 40°21'45.092"N | 104°20'05.652"W | 0.00             |          |
| 7317.00†   | 90.000             | 89.916         | 6336.99     | 935.66            | 1142.51       | 667.56       | 40°21'45.094"N | 104°20'04.360"W | 0.00             |          |
| 7417.00†   | 90.000             | 89.916         | 6336.99     | 1032.42           | 1142.66       | 767.56       | 40°21'45.095"N | 104°20'03.069"W | 0.00             |          |
| 7517.00†   | 90.000             | 89.916         | 6336.99     | 1129.18           | 1142.80       | 867.56       | 40°21'45.097"N | 104°20'01.777"W | 0.00             |          |
| 7617.00†   | 90.000             | 89.916         | 6336.99     | 1225.95           | 1142.95       | 967.56       | 40°21'45.098"N | 104°20'00.485"W | 0.00             |          |
| 7717.00†   | 90.000             | 89.916         | 6336.99     | 1322.71           | 1143.10       | 1067.56      | 40°21'45.100"N | 104°19'59.193"W | 0.00             |          |
| 7817.00†   | 90.000             | 89.916         | 6336.99     | 1419.47           | 1143.24       | 1167.56      | 40°21'45.101"N | 104°19'57.901"W | 0.00             |          |
| 7917.00†   | 90.000             | 89.916         | 6336.99     | 1516.24           | 1143.39       | 1267.56      | 40°21'45.102"N | 104°19'56.609"W | 0.00             |          |
| 8017.00†   | 90.000             | 89.916         | 6336.99     | 1613.00           | 1143.54       | 1367.56      | 40°21'45.104"N | 104°19'55.318"W | 0.00             |          |
| 8117.00†   | 90.000             | 89.916         | 6336.99     | 1709.76           | 1143.69       | 1467.56      | 40°21'45.105"N | 104°19'54.026"W | 0.00             |          |
| 8217.00†   | 90.000             | 89.916         | 6336.99     | 1806.53           | 1143.83       | 1567.56      | 40°21'45.107"N | 104°19'52.734"W | 0.00             |          |
| 8317.00†   | 90.000             | 89.916         | 6336.99     | 1903.29           | 1143.98       | 1667.56      | 40°21'45.108"N | 104°19'51.442"W | 0.00             |          |
| 8417.00†   | 90.000             | 89.916         | 6337.00     | 2000.05           | 1144.13       | 1767.56      | 40°21'45.109"N | 104°19'50.150"W | 0.00             |          |
| 8517.00†   | 90.000             | 89.916         | 6337.00     | 2096.82           | 1144.27       | 1867.56      | 40°21'45.111"N | 104°19'48.859"W | 0.00             |          |
| 8617.00†   | 90.000             | 89.916         | 6337.00     | 2193.58           | 1144.42       | 1967.56      | 40°21'45.112"N | 104°19'47.567"W | 0.00             |          |
| 8717.00†   | 90.000             | 89.916         | 6337.00     | 2290.34           | 1144.57       | 2067.56      | 40°21'45.113"N | 104°19'46.275"W | 0.00             |          |
| 8817.00†   | 90.000             | 89.916         | 6337.00     | 2387.11           | 1144.72       | 2167.56      | 40°21'45.115"N | 104°19'44.983"W | 0.00             |          |
| 8917.00†   | 90.000             | 89.916         | 6337.00     | 2483.87           | 1144.86       | 2267.56      | 40°21'45.116"N | 104°19'43.691"W | 0.00             |          |
| 9017.00†   | 90.000             | 89.916         | 6337.00     | 2580.63           | 1145.01       | 2367.56      | 40°21'45.118"N | 104°19'42.399"W | 0.00             |          |
| 9117.00†   | 90.000             | 89.916         | 6337.00     | 2677.40           | 1145.16       | 2467.56      | 40°21'45.119"N | 104°19'41.108"W | 0.00             |          |
| 9217.00†   | 90.000             | 89.916         | 6337.00     | 2774.16           | 1145.30       | 2567.56      | 40°21'45.120"N | 104°19'39.816"W | 0.00             |          |
| 9317.00†   | 90.000             | 89.916         | 6337.00     | 2870.92           | 1145.45       | 2667.56      | 40°21'45.122"N | 104°19'38.524"W | 0.00             |          |
| 9417.00†   | 90.000             | 89.916         | 6337.00     | 2967.68           | 1145.60       | 2767.56      | 40°21'45.123"N | 104°19'37.232"W | 0.00             |          |
| 9517.00†   | 90.000             | 89.916         | 6337.00     | 3064.45           | 1145.74       | 2867.56      | 40°21'45.124"N | 104°19'35.940"W | 0.00             |          |
| 9617.00†   | 90.000             | 89.916         | 6337.00     | 3161.21           | 1145.89       | 2967.56      | 40°21'45.126"N | 104°19'34.648"W | 0.00             |          |
| 9717.00†   | 90.000             | 89.916         | 6337.00     | 3257.97           | 1146.04       | 3067.56      | 40°21'45.127"N | 104°19'33.357"W | 0.00             |          |
| 9817.00†   | 90.000             | 89.916         | 6337.00     | 3354.74           | 1146.19       | 3167.56      | 40°21'45.128"N | 104°19'32.065"W | 0.00             |          |
| 9917.00†   | 90.000             | 89.916         | 6337.00     | 3451.50           | 1146.33       | 3267.56      | 40°21'45.130"N | 104°19'30.773"W | 0.00             |          |
| 10017.00†  | 90.000             | 89.916         | 6337.00     | 3548.26           | 1146.48       | 3367.56      | 40°21'45.131"N | 104°19'29.481"W | 0.00             |          |
| 10117.00†  | 90.000             | 89.916         | 6337.00     | 3645.03           | 1146.63       | 3467.56      | 40°21'45.132"N | 104°19'28.189"W | 0.00             |          |





# Planned Wellpath Report

ANTELOPE A11-U41-33HNC (REV-B.0) PWP

Page 6 of 8



| REFERENCE WELLPATH IDENTIFICATION |                           |          |  |
|-----------------------------------|---------------------------|----------|--|
| Operator                          | BONANZA CREEK OIL COMPANY | Slot     | SLOT#02 ANTELOPE A11-U41-33HNC (1471'FNL & 370'FWL,SEC.33) |
| Area                              | COLORADO                  | Well     | ANTELOPE A11-U41-33HNC                                     |
| Field                             | WELD COUNTY               | Wellbore | ANTELOPE A11-U41-33HNC PWB                                 |
| Facility                          | SEC.33-T5N-R62W           |          |  |

| WELLPATH DATA (130 stations) † = interpolated/extrapolated station |                 |             |                      |                |            |           |                |                 |               |                |
|--|-----------------|-------------|----------------------|----------------|------------|-----------|----------------|-----------------|---------------|----------------|
| MD [ft]  | Inclination [°] | Azimuth [°] | TVD [ft]             | Vert Sect [ft] | North [ft] | East [ft] | Latitude       | Longitude       | DLS [°/100ft] | Comments       |
| 10217.00†  | 90.000          | 89.916      | 6337.00              | 3741.79        | 1146.77    | 3567.56   | 40°21'45.134"N | 104°19'26.898"W | 0.00          |                |
| 10317.00†  | 90.000          | 89.916      | 6337.00              | 3838.55        | 1146.92    | 3667.55   | 40°21'45.135"N | 104°19'25.606"W | 0.00          |                |
| 10417.00†  | 90.000          | 89.916      | 6337.00              | 3935.32        | 1147.07    | 3767.55   | 40°21'45.136"N | 104°19'24.314"W | 0.00          |                |
| 10517.00†  | 90.000          | 89.916      | 6337.00              | 4032.08        | 1147.22    | 3867.55   | 40°21'45.137"N | 104°19'23.022"W | 0.00          |                |
| 10617.00†  | 90.000          | 89.916      | 6337.00              | 4128.84        | 1147.36    | 3967.55   | 40°21'45.139"N | 104°19'21.730"W | 0.00          |                |
| 10717.00†  | 90.000          | 89.916      | 6337.00              | 4225.61        | 1147.51    | 4067.55   | 40°21'45.140"N | 104°19'20.438"W | 0.00          |                |
| 10817.00†  | 90.000          | 89.916      | 6337.00              | 4322.37        | 1147.66    | 4167.55   | 40°21'45.141"N | 104°19'19.147"W | 0.00          |                |
| 10917.00†  | 90.000          | 89.916      | 6337.00              | 4419.13        | 1147.80    | 4267.55   | 40°21'45.143"N | 104°19'17.855"W | 0.00          |                |
| 11017.00†  | 90.000          | 89.916      | 6337.00              | 4515.90        | 1147.95    | 4367.55   | 40°21'45.144"N | 104°19'16.563"W | 0.00          |                |
| 11024.66   | 90.000          | 89.916      | 6337.00 <sup>1</sup> | 4523.31        | 1147.96    | 4375.22   | 40°21'45.144"N | 104°19'16.464"W | 0.00          | End of Tangent |

| HOLE & CASING SECTIONS -                 |               |             |               |                |  |                |                |              |              |
|--|---------------|-------------|---------------|----------------|--|----------------|----------------|--------------|--------------|
| Ref Wellbore: ANTELOPE A11-U41-33HNC PWB |               |             |               |                | Ref Wellpath: ANTELOPE A11-U41-33HNC (REV-B.0) PWP |                |                |              |              |
| String/Diameter                          | Start MD [ft] | End MD [ft] | Interval [ft] | Start TVD [ft] | End TVD [ft]                                       | Start N/S [ft] | Start E/W [ft] | End N/S [ft] | End E/W [ft] |
| 7in Casing Intermediate                  | 17.00         | 6876.33     | 6859.33       | 17.00          | 6336.99  | 0.00           | 0.00           | 1141.86      | 226.89       |
| 6.125in Open Hole                        | 6785.33       | 11024.66    | 4239.33       | 6329.06        | 6337.00  | 1141.73        | 136.35         | 1147.96      | 4375.22      |
| 4.5in Casing Production                  | 17.00         | 11024.66    | 11007.66      | 17.00          | 6337.00  | 0.00           | 0.00           | 1147.96      | 4375.22      |



# Planned Wellpath Report

ANTELOPE A11-U41-33HNC (REV-B.0) PWP

Page 7 of 8



| REFERENCE WELLPATH IDENTIFICATION |                           |          |  |
|-----------------------------------|---------------------------|----------|--|
| Operator                          | BONANZA CREEK OIL COMPANY | Slot     | SLOT#02 ANTELOPE A11-U41-33HNC (1471'FNL & 370'FWL,SEC.33) |
| Area                              | COLORADO                  | Well     | ANTELOPE A11-U41-33HNC                                     |
| Field                             | WELD COUNTY               | Wellbore | ANTELOPE A11-U41-33HNC PWB                                 |
| Facility                          | SEC.33-T5N-R62W           |          |  |

| TARGETS  |          |          |            |           |                   |                    |                |                 |         |
|--|----------|----------|------------|-----------|-------------------|--------------------|----------------|-----------------|---------|
| Name   | MD [ft]  | TVD [ft] | North [ft] | East [ft] | Grid East [US ft] | Grid North [US ft] | Latitude       | Longitude       | Shape   |
| ANTELOPE 11-41-33HNB SECTION 33                                |          | 0.00     | 0.00       | 22.30     | 3324131.29        | 1375892.19         | 40°21'33.804"N | 104°20'12.696"W | polygon |
| ANTELOPE 11-41-33HNB HARDLINE (460' SETBACK FEL/FWL)           |          | 6246.00  | 0.00       | 22.30     | 3324131.29        | 1375892.19         | 40°21'33.804"N | 104°20'12.696"W | polygon |
| ANTELOPE A11-U41-33HNB BHL REV-1 (327'FNL & 470'FEL,SEC.33)    |          | 6246.00  | 1147.96    | 4375.22   | 3328468.60        | 1377097.09         | 40°21'45.144"N | 104°19'16.464"W | point   |
| 1) ANTELOPE A11-U41-33HNC BHL REV-2 (327'FNL & 470'FEL,SEC.33) | 11024.66 | 6337.00  | 1147.96    | 4375.22   | 3328468.60        | 1377097.09         | 40°21'45.144"N | 104°19'16.464"W | point   |
| RANCH 1-70 500'R   |          | 7075.00  | -1469.14   | 2442.30   | 3326570.25        | 1374454.98         | 40°21'19.285"N | 104°19'41.437"W | circle  |

| SURVEY PROGRAM - Ref Wellbore: ANTELOPE A11-U41-33HNC PWB Ref Wellpath: ANTELOPE A11-U41-33HNC (REV-B.0) PWP |             |                              |                  |                            |
|--|-------------|------------------------------|------------------|----------------------------|
| Start MD [ft]  | End MD [ft] | Positional Uncertainty Model | Log Name/Comment | Wellbore                   |
| 17.00  | 10933.66    | NaviTrak (Standard)          |                  | ANTELOPE A11-U41-33HNC PWB |





# Planned Wellpath Report

ANTELOPE A11-U41-33HNC (REV-B.0) PWP

Page 8 of 8



## REFERENCE WELLPATH IDENTIFICATION

|          |                           |          |  |
|----------|---------------------------|----------|--|
| Operator | BONANZA CREEK OIL COMPANY | Slot     | SLOT#02 ANTELOPE A11-U41-33HNC (1471'FNL & 370'FWL,SEC.33) |
| Area     | COLORADO                  | Well     | ANTELOPE A11-U41-33HNC                                     |
| Field    | WELD COUNTY               | Wellbore | ANTELOPE A11-U41-33HNC PWB                                 |
| Facility | SEC.33-T5N-R62W           |          |  |

## WELLPATH COMMENTS

| MD<br>[ft] | Inclination<br>[°] | Azimuth<br>[°] | TVD<br>[ft] | Comment            |
|------------|--------------------|----------------|-------------|--------------------|
| 3398.64    | 22.000             | 342.500        | 3295.00     | Parkman            |
| 6264.80    | 30.431             | 89.916         | 6056.00     | Sharon Springs     |
| 6299.12    | 34.206             | 89.916         | 6085.00     | Sharona Srings "A" |
| 6371.71    | 42.191             | 89.916         | 6142.00     | Sharon Springs "B" |
| 6434.70    | 49.120             | 89.916         | 6186.00     | Niobrara "A" Chalk |
| 6453.42    | 51.180             | 89.916         | 6198.00     | Niobrara "A" Marl  |
| 6553.75    | 62.216             | 89.916         | 6253.00     | Niobrara "B" Chalk |
| 6614.16    | 68.861             | 89.916         | 6278.00     | Niobrara "B" Marl  |
| 6774.14    | 78.759             | 89.916         | 6327.00     | Niobrara "C" Chalk |

## DESIGN COMMENTS

| MD<br>[ft] | Inclination<br>[°] | Azimuth<br>[°] | TVD<br>[ft] | Comment        |
|------------|--------------------|----------------|-------------|----------------|
| 17.00      | 0.000              | 342.500        | 17.00       | Tie On         |
| 1000.00    | 0.000              | 342.500        | 1000.00     | End of Tangent |
| 2466.67    | 22.000             | 342.500        | 2430.89     | End of Build   |
| 4175.39    | 22.000             | 342.500        | 4015.19     | End of Tangent |
| 5642.05    | 0.000              | 89.916         | 5446.08     | End of Drop    |
| 5988.15    | 0.000              | 89.916         | 5792.18     | End of Tangent |
| 6624.52    | 70.000             | 89.916         | 6281.64     | End of Build   |
| 6694.52    | 70.000             | 89.916         | 6305.58     | End of Tangent |
| 6876.33    | 90.000             | 89.916         | 6336.99     | End of 3D Arc  |
| 11024.66   | 90.000             | 89.916         | 6337.00     | End of Tangent |