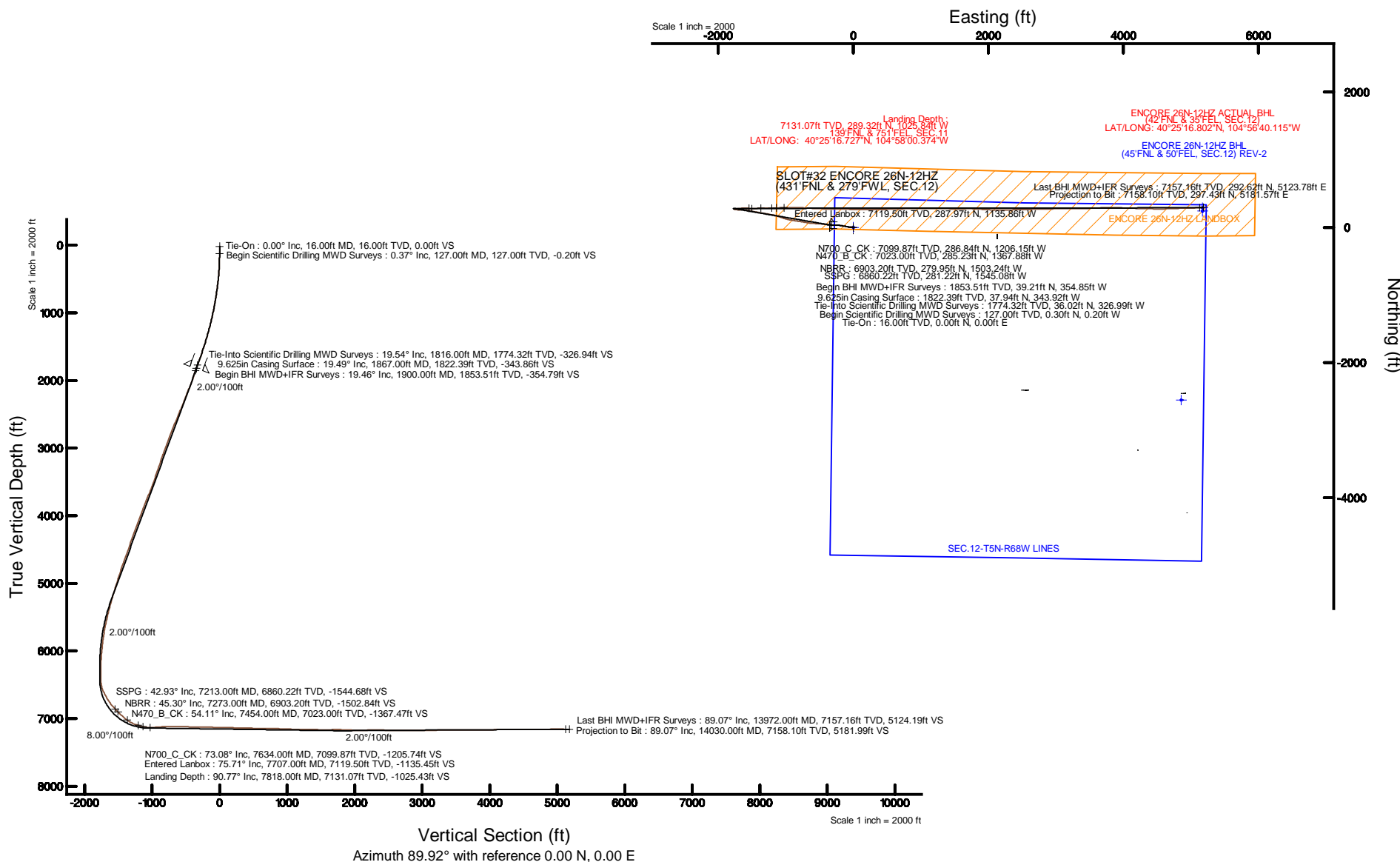


KERR-MCGEE OIL & GAS ONSHORE LP (WA)

Location: COLORADO Slot: SLOT#32 ENCORE 26N-12HZ (431'FNL & 279'FWL, SEC.12)
 Field: LARIMER COUNTY Well: ENCORE 26N-12HZ
 Facility: SEC.12-T5N-R68W Wellbore: ENCORE 26N-12HZ PWB



Plot reference wellpath is ENCORE 26N-12HZ (REV-A.0) PWP	Grid System: NAD83 / UTM Zone 13 North, US feet
True vertical depths are referenced to XTREME 23 (16'KB) (RKB)	North Reference: True north
Measured depths are referenced to XTREME 23 (16'KB) (RKB)	Scale: True distance
XTREME 23 (16'KB) (RKB) to Mean Sea Level: 5006 feet	Depths are in feet
Mean Sea Level to Mud line (At Slot: SLOT#32 ENCORE 26N-12HZ (431'FNL & 279'FWL, SEC.12)): 0 feet	Created by: precain on 8/24/2015
Coordinates are in feet referenced to Slot	



REFERENCE WELLPATH IDENTIFICATION			
Operator	KERR-MCGEE OIL & GAS ONSHORE LP (WA)	Slot	SLOT#32 ENCORE 26N-12HZ (431'FNL & 279'FWL, SEC.12)
Area	COLORADO	Well	ENCORE 26N-12HZ
Field	LARIMER COUNTY	Wellbore	ENCORE 26N-12HZ AWB <14030>
Facility	SEC.12-T5N-R68W		

REPORT SETUP INFORMATION			
Projection System	NAD83 / UTM Zone 13 North, US feet	Software System	WellArchitect® 4.1.1
North Reference	True	User	Precain
Scale	0.9996	Report Generated	8/24/2015 at 3:35:58 PM
Convergence at slot	0.02° East	Database/Source file	WellArchitectAPC/ENCORE_26N-12HZ_AWB__14030_.xml

WELLPATH LOCATION						
	Local coordinates		Grid coordinates		Geographic coordinates	
	North[ft]	East[ft]	Easting[US ft]	Northing[US ft]	Latitude	Longitude
Slot Location	2455.15	-4915.58	1650690.74	14679869.12	40°25'13.868"N	104°57'47.110"W
Facility Reference Pt			1655605.86	14677417.99	40°24'49.612"N	104°56'43.555"W
Field Reference Pt			0.00	0.00	0°00'00.000"	109°29'19.478"W

WELLPATH DATUM			
Calculation method	Minimum curvature	XTREME 23 (16'KB) (RKB) to Facility Vertical Datum	5006.00ft
Horizontal Reference Pt	Slot	XTREME 23 (16'KB) (RKB) to Mean Sea Level	5006.00ft
Vertical Reference Pt	XTREME 23 (16'KB) (RKB)	XTREME 23 (16'KB) (RKB) to Mud Line at Slot (SLOT#32 ENCORE 26N-12HZ (431'FNL & 279'FWL, SEC.12))	5006.00ft
MD Reference Pt	XTREME 23 (16'KB) (RKB)	Section Origin	N 0.00, E 0.00 ft
Field Vertical Reference	Mean Sea Level	Section Azimuth	89.92°

REFERENCE WELLPATH IDENTIFICATION			
Operator	KERR-MCGEE OIL & GAS ONSHORE LP (WA)	Slot	SLOT#32 ENCORE 26N-12HZ (431'FNL & 279'FWL, SEC.12)
Area	COLORADO	Well	ENCORE 26N-12HZ
Field	LARIMER COUNTY	Wellbore	ENCORE 26N-12HZ AWB <14030>
Facility	SEC.12-T5N-R68W		

WELLPATH DATA (151 stations) † = interpolated/extrapolated station										
MD [ft]	Inclination [°]	Azimuth [°]	TVD [ft]	Vert Sect [ft]	North [ft]	East [ft]	Latitude	Longitude	DLS [°/100ft]	Comments
0.00†	0.000	326.360	0.00	0.00	0.00	0.00	40°25'13.868"N	104°57'47.110"W	0.00	
16.00	0.000	326.360	16.00	0.00	0.00	0.00	40°25'13.868"N	104°57'47.110"W	0.00	Tie-On
127.00	0.370	326.360	127.00	-0.20	0.30	-0.20	40°25'13.871"N	104°57'47.113"W	0.33	Begin Scientific Drilling MWD Surveys
219.00	0.980	296.790	218.99	-1.06	0.90	-1.07	40°25'13.877"N	104°57'47.124"W	0.74	
307.00	2.700	286.900	306.94	-3.72	1.84	-3.72	40°25'13.886"N	104°57'47.158"W	1.98	
467.00	5.720	271.950	466.50	-15.29	3.21	-15.30	40°25'13.900"N	104°57'47.308"W	1.99	
561.00	7.010	269.920	559.92	-25.71	3.36	-25.72	40°25'13.901"N	104°57'47.442"W	1.39	
656.00	7.730	271.760	654.13	-37.89	3.55	-37.90	40°25'13.903"N	104°57'47.600"W	0.80	
750.00	8.530	274.420	747.19	-51.16	4.28	-51.17	40°25'13.910"N	104°57'47.772"W	0.94	
941.00	11.770	281.520	935.18	-84.38	9.26	-84.39	40°25'13.960"N	104°57'48.201"W	1.82	
1036.00	12.330	281.210	1028.09	-103.82	13.17	-103.83	40°25'13.998"N	104°57'48.453"W	0.59	
1131.00	13.830	278.600	1120.62	-124.99	16.84	-125.01	40°25'14.034"N	104°57'48.726"W	1.70	
1226.00	14.270	280.320	1212.78	-147.73	20.64	-147.76	40°25'14.072"N	104°57'49.020"W	0.64	
1320.00	16.090	280.270	1303.49	-171.94	25.03	-171.98	40°25'14.115"N	104°57'49.334"W	1.94	
1415.00	16.550	276.920	1394.67	-198.32	29.01	-198.36	40°25'14.155"N	104°57'49.675"W	1.10	
1542.00	18.290	271.850	1515.85	-236.19	31.83	-236.24	40°25'14.183"N	104°57'50.164"W	1.82	
1636.00	19.660	270.310	1604.74	-266.75	32.40	-266.80	40°25'14.188"N	104°57'50.559"W	1.55	
1732.00	19.570	273.770	1695.17	-298.94	33.54	-298.99	40°25'14.199"N	104°57'50.976"W	1.21	
1816.00	19.540	276.370	1774.32	-326.94	36.02	-326.99	40°25'14.224"N	104°57'51.338"W	1.04	Tie-Into Scientific Drilling MWD Surveys
1900.00	19.460	276.680	1853.51	-354.79	39.21	-354.85	40°25'14.255"N	104°57'51.698"W	0.16	Begin BHI MWD+IFR Surveys
1995.00	19.520	274.540	1943.06	-386.33	42.31	-386.39	40°25'14.286"N	104°57'52.106"W	0.75	
2090.00	20.900	276.570	2032.21	-418.98	45.50	-419.04	40°25'14.318"N	104°57'52.528"W	1.63	
2185.00	21.000	275.600	2120.93	-452.75	49.10	-452.82	40°25'14.353"N	104°57'52.965"W	0.38	
2280.00	20.740	273.020	2209.70	-486.48	51.65	-486.56	40°25'14.378"N	104°57'53.401"W	1.01	
2375.00	22.530	274.220	2298.01	-521.43	53.88	-521.51	40°25'14.400"N	104°57'53.853"W	1.94	
2470.00	22.920	274.580	2385.63	-558.02	56.69	-558.10	40°25'14.428"N	104°57'54.326"W	0.44	
2566.00	22.950	271.910	2474.05	-595.36	58.81	-595.44	40°25'14.449"N	104°57'54.809"W	1.08	
2661.00	22.540	277.620	2561.67	-631.92	61.84	-632.00	40°25'14.479"N	104°57'55.281"W	2.36	
2852.00	22.140	279.960	2738.34	-703.63	72.92	-703.74	40°25'14.588"N	104°57'56.209"W	0.51	
2947.00	21.170	280.230	2826.63	-738.14	79.06	-738.25	40°25'14.649"N	104°57'56.655"W	1.03	
3042.00	19.680	278.660	2915.66	-770.83	84.52	-770.95	40°25'14.703"N	104°57'57.078"W	1.67	
3137.00	19.720	278.280	3005.10	-802.50	89.24	-802.63	40°25'14.750"N	104°57'57.487"W	0.14	
3233.00	20.980	279.650	3095.10	-835.46	94.45	-835.60	40°25'14.801"N	104°57'57.914"W	1.40	
3328.00	19.550	277.170	3184.22	-867.99	99.28	-868.14	40°25'14.849"N	104°57'58.334"W	1.76	
3424.00	18.960	280.470	3274.85	-899.26	104.12	-899.41	40°25'14.897"N	104°57'58.739"W	1.29	
3519.00	18.880	280.050	3364.72	-929.56	109.61	-929.72	40°25'14.951"N	104°57'59.131"W	0.17	
3615.00	19.830	283.030	3455.30	-960.71	115.99	-960.88	40°25'15.014"N	104°57'59.534"W	1.43	
3710.00	21.720	286.130	3544.12	-993.29	124.51	-993.47	40°25'15.098"N	104°57'59.955"W	2.30	
3805.00	22.480	288.640	3632.14	-1027.37	135.20	-1027.57	40°25'15.204"N	104°58'00.396"W	1.28	
3901.00	22.540	286.990	3720.83	-1062.34	146.44	-1062.55	40°25'15.315"N	104°58'00.848"W	0.66	
3996.00	22.560	286.810	3808.56	-1097.19	157.03	-1097.41	40°25'15.419"N	104°58'01.299"W	0.08	
4091.00	20.790	287.300	3896.84	-1130.72	167.32	-1130.96	40°25'15.521"N	104°58'01.733"W	1.87	
4186.00	20.300	283.550	3985.80	-1162.82	176.19	-1163.08	40°25'15.609"N	104°58'02.148"W	1.48	
4282.00	21.980	281.450	4075.34	-1196.61	183.66	-1196.88	40°25'15.683"N	104°58'02.585"W	1.92	
4377.00	21.300	280.810	4163.65	-1230.98	190.43	-1231.25	40°25'15.749"N	104°58'03.029"W	0.76	

REFERENCE WELLPATH IDENTIFICATION										
Operator	KERR-MCGEE OIL & GAS ONSHORE LP (WA)					Slot	SLOT#32 ENCORE 26N-12HZ (431'FNL & 279'FWL, SEC.12)			
Area	COLORADO					Well	ENCORE 26N-12HZ			
Field	LARIMER COUNTY					Wellbore	ENCORE 26N-12HZ AWB <14030>			
Facility	SEC.12-T5N-R68W									

WELLPATH DATA (151 stations) † = interpolated/extrapolated station										
MD [ft]	Inclination [°]	Azimuth [°]	TVD [ft]	Vert Sect [ft]	North [ft]	East [ft]	Latitude	Longitude	DLS [°/100ft]	Comments
4472.00	20.510	278.830	4252.39	-1264.36	196.22	-1264.64	40°25'15.807"N	104°58'03.461"W	1.12	
4567.00	19.960	280.450	4341.53	-1296.75	201.71	-1297.04	40°25'15.861"N	104°58'03.880"W	0.83	
4662.00	19.320	280.050	4431.00	-1328.16	207.40	-1328.46	40°25'15.917"N	104°58'04.286"W	0.69	
4756.00	19.460	280.020	4519.67	-1358.88	212.83	-1359.19	40°25'15.971"N	104°58'04.683"W	0.15	
4852.00	21.050	278.960	4609.73	-1391.65	218.30	-1391.97	40°25'16.025"N	104°58'05.107"W	1.70	
4947.00	20.410	280.090	4698.58	-1424.81	223.86	-1425.13	40°25'16.080"N	104°58'05.536"W	0.79	
5042.00	18.480	280.830	4788.16	-1455.90	229.59	-1456.23	40°25'16.136"N	104°58'05.938"W	2.05	
5137.00	17.950	281.500	4878.40	-1485.02	235.34	-1485.36	40°25'16.193"N	104°58'06.315"W	0.60	
5233.00	18.000	279.910	4969.71	-1514.12	240.84	-1514.47	40°25'16.247"N	104°58'06.691"W	0.51	
5328.00	17.720	284.190	5060.14	-1542.59	246.91	-1542.95	40°25'16.307"N	104°58'07.059"W	1.41	
5423.00	16.770	279.100	5150.87	-1570.13	252.63	-1570.50	40°25'16.364"N	104°58'07.416"W	1.88	
5519.00	15.910	279.050	5242.99	-1596.80	256.89	-1597.17	40°25'16.406"N	104°58'07.760"W	0.90	
5614.00	15.050	274.770	5334.55	-1621.95	259.96	-1622.32	40°25'16.436"N	104°58'08.086"W	1.50	
5709.00	13.690	272.500	5426.58	-1645.47	261.48	-1645.84	40°25'16.451"N	104°58'08.390"W	1.55	
5804.00	12.990	263.390	5519.02	-1667.31	260.74	-1667.68	40°25'16.444"N	104°58'08.672"W	2.33	
5898.00	12.300	270.050	5610.75	-1687.82	259.53	-1688.19	40°25'16.432"N	104°58'08.937"W	1.71	
5994.00	9.300	273.260	5705.04	-1705.79	259.98	-1706.16	40°25'16.436"N	104°58'09.170"W	3.19	
6089.00	8.910	275.810	5798.84	-1720.77	261.16	-1721.15	40°25'16.448"N	104°58'09.363"W	0.59	
6184.00	5.800	276.970	5893.05	-1732.86	262.49	-1733.23	40°25'16.461"N	104°58'09.520"W	3.28	
6279.00	5.900	272.480	5987.55	-1742.50	263.28	-1742.88	40°25'16.469"N	104°58'09.644"W	0.49	
6373.00	4.750	280.090	6081.15	-1751.16	264.17	-1751.54	40°25'16.478"N	104°58'09.756"W	1.43	
6469.00	2.360	301.360	6176.96	-1756.76	265.90	-1757.14	40°25'16.495"N	104°58'09.829"W	2.80	
6564.00	1.450	308.930	6271.91	-1759.36	267.67	-1759.74	40°25'16.512"N	104°58'09.862"W	0.99	
6659.00	0.600	257.830	6366.89	-1760.78	268.32	-1761.17	40°25'16.519"N	104°58'09.881"W	1.23	
6754.00	5.300	87.900	6461.77	-1756.88	268.38	-1757.26	40°25'16.519"N	104°58'09.830"W	6.20	
6850.00	19.200	81.040	6555.36	-1736.75	271.01	-1737.14	40°25'16.545"N	104°58'09.570"W	14.53	
6945.00	28.460	81.900	6642.16	-1698.82	276.65	-1699.22	40°25'16.601"N	104°58'09.080"W	9.75	
7040.00	32.570	85.830	6724.00	-1650.87	281.70	-1651.28	40°25'16.651"N	104°58'08.460"W	4.81	
7135.00	38.690	91.410	6801.20	-1595.62	282.83	-1596.02	40°25'16.662"N	104°58'07.746"W	7.29	
7213.00†	42.931	92.180	6860.22	-1544.68	281.22	-1545.08	40°25'16.646"N	104°58'07.087"W	5.47	SSPG
7231.00	43.910	92.340	6873.29	-1532.32	280.73	-1532.72	40°25'16.642"N	104°58'06.927"W	5.47	
7273.00†	45.297	90.695	6903.20	-1502.84	279.95	-1503.24	40°25'16.634"N	104°58'06.546"W	4.30	NBRR
7326.00	47.080	88.730	6939.89	-1464.60	280.16	-1465.00	40°25'16.636"N	104°58'06.052"W	4.30	
7421.00	50.090	85.720	7002.73	-1393.46	283.65	-1393.87	40°25'16.670"N	104°58'05.132"W	3.96	
7454.00†	54.111	87.247	7023.00	-1367.47	285.23	-1367.88	40°25'16.686"N	104°58'04.796"W	12.72	N470_B_CK
7516.00	61.710	89.740	7055.92	-1315.01	286.57	-1315.42	40°25'16.699"N	104°58'04.118"W	12.72	
7611.00	72.250	89.990	7093.01	-1227.69	286.77	-1228.11	40°25'16.701"N	104°58'02.989"W	11.10	
7634.00†	73.078	89.633	7099.87	-1205.74	286.84	-1206.15	40°25'16.702"N	104°58'02.705"W	3.89	N700_C_CK
7707.00	75.710	88.520	7119.50	-1135.45	287.97	-1135.86	40°25'16.713"N	104°58'01.796"W	3.89	Entered Lanbox
7802.00	90.120	89.880	7131.19	-1041.43	289.27	-1041.84	40°25'16.726"N	104°58'00.580"W	15.23	
7818.00†	90.772	89.762	7131.07	-1025.43	289.32	-1025.84	40°25'16.727"N	104°58'00.374"W	4.14	Landing Depth
7898.00	94.030	89.170	7127.72	-945.51	290.06	-945.93	40°25'16.734"N	104°57'59.340"W	4.14	
7993.00	93.080	89.130	7121.83	-850.71	291.47	-851.12	40°25'16.748"N	104°57'58.115"W	1.00	
8089.00	89.780	93.240	7119.43	-754.79	289.48	-755.21	40°25'16.728"N	104°57'56.874"W	5.49	
8184.00	91.410	93.330	7118.44	-659.96	284.04	-660.37	40°25'16.675"N	104°57'55.648"W	1.72	

REFERENCE WELLPATH IDENTIFICATION			
Operator	KERR-MCGEE OIL & GAS ONSHORE LP (WA)	Slot	SLOT#32 ENCORE 26N-12HZ (431'FNL & 279'FWL, SEC.12)
Area	COLORADO	Well	ENCORE 26N-12HZ
Field	LARIMER COUNTY	Wellbore	ENCORE 26N-12HZ AWB <14030>
Facility	SEC.12-T5N-R68W		

WELLPATH DATA (151 stations)										
MD [ft]	Inclination [°]	Azimuth [°]	TVD [ft]	Vert Sect [ft]	North [ft]	East [ft]	Latitude	Longitude	DLS [°/100ft]	Comments
8279.00	89.260	92.850	7117.89	-565.12	278.92	-565.52	40°25'16.624"N	104°57'54.422"W	2.32	
8374.00	86.850	91.970	7121.11	-470.27	274.93	-470.66	40°25'16.585"N	104°57'53.195"W	2.70	
8469.00	88.700	91.860	7124.80	-375.40	271.76	-375.79	40°25'16.553"N	104°57'51.969"W	1.95	
8565.00	89.260	91.200	7126.51	-279.46	269.19	-279.84	40°25'16.528"N	104°57'50.728"W	0.90	
8660.00	89.350	89.890	7127.66	-184.47	268.29	-184.86	40°25'16.519"N	104°57'49.500"W	1.38	
8755.00	88.950	90.620	7129.07	-89.49	267.87	-89.87	40°25'16.515"N	104°57'48.272"W	0.88	
8850.00	88.340	91.600	7131.32	5.47	266.03	5.08	40°25'16.497"N	104°57'47.044"W	1.21	
8946.00	89.200	90.720	7133.38	101.42	264.08	101.04	40°25'16.478"N	104°57'45.804"W	1.28	
9041.00	87.870	90.070	7135.81	196.38	263.43	196.01	40°25'16.471"N	104°57'44.576"W	1.56	
9136.00	88.980	90.930	7138.42	291.34	262.60	290.96	40°25'16.463"N	104°57'43.348"W	1.48	
9230.00	88.920	87.970	7140.14	385.31	263.50	384.93	40°25'16.472"N	104°57'42.133"W	3.15	
9325.00	87.870	88.170	7142.80	480.22	266.70	479.84	40°25'16.503"N	104°57'40.906"W	1.13	
9420.00	89.510	88.800	7144.97	575.16	269.21	574.78	40°25'16.528"N	104°57'39.678"W	1.85	
9516.00	88.430	87.840	7146.70	671.11	272.03	670.72	40°25'16.556"N	104°57'38.438"W	1.51	
9611.00	89.600	87.840	7148.33	766.03	275.61	765.64	40°25'16.591"N	104°57'37.211"W	1.23	
9706.00	89.140	88.840	7149.38	860.99	278.36	860.59	40°25'16.618"N	104°57'35.983"W	1.16	
9801.00	87.230	89.550	7152.39	955.93	279.69	955.53	40°25'16.632"N	104°57'34.756"W	2.14	
9897.00	87.600	89.640	7156.71	1051.83	280.37	1051.43	40°25'16.638"N	104°57'33.516"W	0.40	
9992.00	88.920	89.360	7159.60	1146.78	281.20	1146.38	40°25'16.646"N	104°57'32.288"W	1.42	
10087.00	89.140	91.250	7161.21	1241.76	280.69	1241.36	40°25'16.641"N	104°57'31.060"W	2.00	
10183.00	90.220	92.420	7161.74	1337.70	277.62	1337.30	40°25'16.611"N	104°57'29.819"W	1.66	
10278.00	88.340	92.170	7162.94	1432.61	273.81	1432.22	40°25'16.573"N	104°57'28.592"W	2.00	
10373.00	88.680	90.060	7165.41	1527.55	271.97	1527.16	40°25'16.555"N	104°57'27.365"W	2.25	
10468.00	91.880	88.180	7164.94	1622.52	273.43	1622.13	40°25'16.569"N	104°57'26.137"W	3.91	
10564.00	90.310	89.860	7163.11	1718.49	275.07	1718.09	40°25'16.586"N	104°57'24.896"W	2.39	
10658.00	88.030	92.830	7164.47	1812.43	272.86	1812.04	40°25'16.564"N	104°57'23.681"W	3.98	
10754.00	87.280	93.590	7168.40	1908.19	267.49	1907.81	40°25'16.511"N	104°57'22.443"W	1.11	
10849.00	88.300	93.740	7172.06	2002.91	261.42	2002.54	40°25'16.450"N	104°57'21.218"W	1.09	
10944.00	90.890	90.580	7172.73	2097.82	257.84	2097.45	40°25'16.415"N	104°57'19.991"W	4.30	
11039.00	91.350	89.060	7170.88	2192.80	258.14	2192.43	40°25'16.418"N	104°57'18.763"W	1.67	
11134.00	90.240	89.690	7169.56	2287.78	259.18	2287.41	40°25'16.428"N	104°57'17.535"W	1.34	
11229.00	89.220	87.380	7170.01	2382.75	261.61	2382.37	40°25'16.452"N	104°57'16.307"W	2.66	
11324.00	88.610	88.700	7171.81	2477.68	264.86	2477.30	40°25'16.484"N	104°57'15.080"W	1.53	
11419.00	88.210	89.200	7174.44	2572.63	266.60	2572.25	40°25'16.501"N	104°57'13.852"W	0.67	
11514.00	89.470	89.350	7176.36	2667.60	267.80	2667.22	40°25'16.513"N	104°57'12.624"W	1.34	
11610.00	89.560	88.300	7177.18	2763.58	269.77	2763.19	40°25'16.532"N	104°57'11.383"W	1.10	
11705.00	91.130	88.330	7176.61	2858.53	272.56	2858.15	40°25'16.560"N	104°57'10.156"W	1.65	
11800.00	90.520	89.240	7175.24	2953.50	274.57	2953.11	40°25'16.579"N	104°57'08.928"W	1.15	
11895.00	89.840	89.030	7174.94	3048.49	276.01	3048.10	40°25'16.594"N	104°57'07.700"W	0.75	
11990.00	91.870	89.390	7173.52	3143.47	277.32	3143.08	40°25'16.606"N	104°57'06.472"W	2.17	
12085.00	92.180	89.310	7170.16	3238.41	278.39	3238.01	40°25'16.617"N	104°57'05.244"W	0.34	
12180.00	90.000	90.090	7168.36	3333.38	278.89	3332.99	40°25'16.622"N	104°57'04.016"W	2.44	
12275.00	89.110	89.190	7169.10	3428.38	279.49	3427.98	40°25'16.627"N	104°57'02.788"W	1.33	
12370.00	89.850	87.420	7169.96	3523.33	282.30	3522.93	40°25'16.655"N	104°57'01.560"W	2.02	
12466.00	91.200	87.230	7169.08	3619.23	286.78	3618.82	40°25'16.699"N	104°57'00.321"W	1.42	

REFERENCE WELLPATH IDENTIFICATION			
Operator	KERR-MCGEE OIL & GAS ONSHORE LP (WA)	Slot	SLOT#32 ENCORE 26N-12HZ (431'FNL & 279'FWL, SEC.12)
Area	COLORADO	Well	ENCORE 26N-12HZ
Field	LARIMER COUNTY	Wellbore	ENCORE 26N-12HZ AWB <14030>
Facility	SEC.12-T5N-R68W		

WELLPATH DATA (151 stations)										
MD [ft]	Inclination [°]	Azimuth [°]	TVD [ft]	Vert Sect [ft]	North [ft]	East [ft]	Latitude	Longitude	DLS [°/100ft]	Comments
12561.00	91.080	86.670	7167.19	3714.08	291.83	3713.67	40°25'16.749"N	104°56'59.094"W	0.60	
12655.00	90.950	90.760	7165.52	3808.02	293.94	3807.61	40°25'16.770"N	104°56'57.880"W	4.35	
12750.00	89.450	92.350	7165.19	3902.98	291.36	3902.57	40°25'16.744"N	104°56'56.652"W	2.30	
12846.00	90.960	92.340	7164.85	3998.89	287.43	3998.48	40°25'16.705"N	104°56'55.412"W	1.57	
12940.00	90.830	91.840	7163.38	4092.81	284.01	4092.41	40°25'16.671"N	104°56'54.197"W	0.55	
13035.00	89.630	91.740	7163.00	4187.76	281.04	4187.36	40°25'16.642"N	104°56'52.970"W	1.27	
13130.00	90.280	91.490	7163.07	4282.71	278.36	4282.32	40°25'16.615"N	104°56'51.742"W	0.73	
13225.00	91.320	91.350	7161.75	4377.67	276.01	4377.28	40°25'16.592"N	104°56'50.514"W	1.10	
13321.00	90.370	91.200	7160.33	4473.63	273.87	4473.25	40°25'16.570"N	104°56'49.273"W	1.00	
13416.00	89.750	89.170	7160.23	4568.63	273.56	4568.24	40°25'16.567"N	104°56'48.045"W	2.23	
13511.00	89.720	87.200	7160.67	4663.58	276.57	4663.19	40°25'16.597"N	104°56'46.818"W	2.07	
13607.00	90.800	88.530	7160.23	4759.51	280.15	4759.11	40°25'16.632"N	104°56'45.577"W	1.78	
13702.00	91.940	88.470	7157.96	4854.45	282.63	4854.05	40°25'16.656"N	104°56'44.350"W	1.20	
13798.00	90.250	89.370	7156.13	4950.42	284.44	4950.01	40°25'16.674"N	104°56'43.109"W	1.99	
13972.00	89.070	85.240	7157.16	5124.19	292.62	5123.78	40°25'16.754"N	104°56'40.862"W	2.47	Last BHI MWD+IFR Surveys
14030.00	89.070	85.240	7158.10	5181.99	297.43	5181.57	40°25'16.802"N	104°56'40.115"W	0.00	Projection to Bit

HOLE & CASING SECTIONS - Ref Wellbore: ENCORE 26N-12HZ AWB <14030> Ref Wellpath: ENCORE 26N-12HZ AWP									
String/Diameter	Start MD [ft]	End MD [ft]	Interval [ft]	Start TVD [ft]	End TVD [ft]	Start N/S [ft]	Start E/W [ft]	End N/S [ft]	End E/W [ft]
13.5in Open Hole	16.00	1877.00	1861.00	16.00	1831.82	0.00	0.00	38.32	-347.23
9.625in Casing Surface	16.00	1867.00	1851.00	16.00	1822.39	0.00	0.00	37.94	-343.92
8.5in Open Hole	1877.00	14030.00	12153.00	1831.82	7158.10	38.32	-347.23	297.43	5181.57

TARGETS								
Name	TVD [ft]	North [ft]	East [ft]	Grid East [US ft]	Grid North [US ft]	Latitude	Longitude	Shape
SEC.12-T5N-R68W LINES	42.00	-2552.95	4855.93	1655545.78	14677319.22	40°24'48.636"N	104°56'44.333"W	polygon
ENCORE 26N-12HZ BHL (45'FNL & 50'FEL, SEC.12) REV-2	7157.00	289.98	5171.38	1655859.93	14680161.14	40°25'16.728"N	104°56'40.247"W	point
ENCORE 26N-12HZ BHL ON PLAT (95'FNL & 50'FEL, SEC.12) REV-1	7157.00	239.98	5171.38	1655859.95	14680111.16	40°25'16.234"N	104°56'40.247"W	point
ENCORE 26N-12HZ LANDBOX	7157.00	0.00	0.00	1650690.74	14679869.12	40°25'13.868"N	104°57'47.110"W	polygon

WELLPATH COMPOSITION - Ref Wellbore: ENCORE 26N-12HZ AWB <14030> Ref Wellpath: ENCORE 26N-12HZ AWP				
Start MD [ft]	End MD [ft]	Positional Uncertainty Model	Log Name/Comment	Wellbore
16.00	1816.00	Custom APC_ISCWSA REV 2 MWD	SCIENTIFIC DRILLING MWD SURVEYS <127-1816>	ENCORE 26N-12HZ AWB <14030>
1816.00	13972.00	Custom APC_ISCWSA REV 2 MWD+IFR1 (approximation)	BHI MWD+IFR SURVEYS 8 1/2" HOLE <1900-13972>	ENCORE 26N-12HZ AWB <14030>
13972.00	14030.00	Blind Drilling (std)	Projection to bit	ENCORE 26N-12HZ AWB <14030>

Actual Wellpath Report

ENCORE 26N-12HZ AWP

Page 6 of 6

REFERENCE WELLPATH IDENTIFICATION			
Operator	KERR-MCGEE OIL & GAS ONSHORE LP (WA)	Slot	SLOT#32 ENCORE 26N-12HZ (431'FNL & 279'FWL, SEC.12)
Area	COLORADO	Well	ENCORE 26N-12HZ
Field	LARIMER COUNTY	Wellbore	ENCORE 26N-12HZ AWB <14030>
Facility	SEC.12-T5N-R68W		

WELLPATH COMMENTS				
MD [ft]	Inclination [°]	Azimuth [°]	TVD [ft]	Comment
16.00	0.000	326.360	16.00	Tie-On
127.00	0.370	326.360	127.00	Begin Scientific Drilling MWD Surveys
1816.00	19.540	276.370	1774.32	Tie-Into Scientific Drilling MWD Surveys
1900.00	19.460	276.680	1853.51	Begin BHI MWD+IFR Surveys
7213.00	42.931	92.180	6860.22	SSPG
7273.00	45.297	90.695	6903.20	NBRR
7454.00	54.111	87.247	7023.00	N470_B_CK
7634.00	73.078	89.633	7099.87	N700_C_CK
7707.00	75.710	88.520	7119.50	Entered Lanbox
7818.00	90.772	89.762	7131.07	Landing Depth
13972.00	89.070	85.240	7157.16	Last BHI MWD+IFR Surveys
14030.00	89.070	85.240	7158.10	Projection to Bit