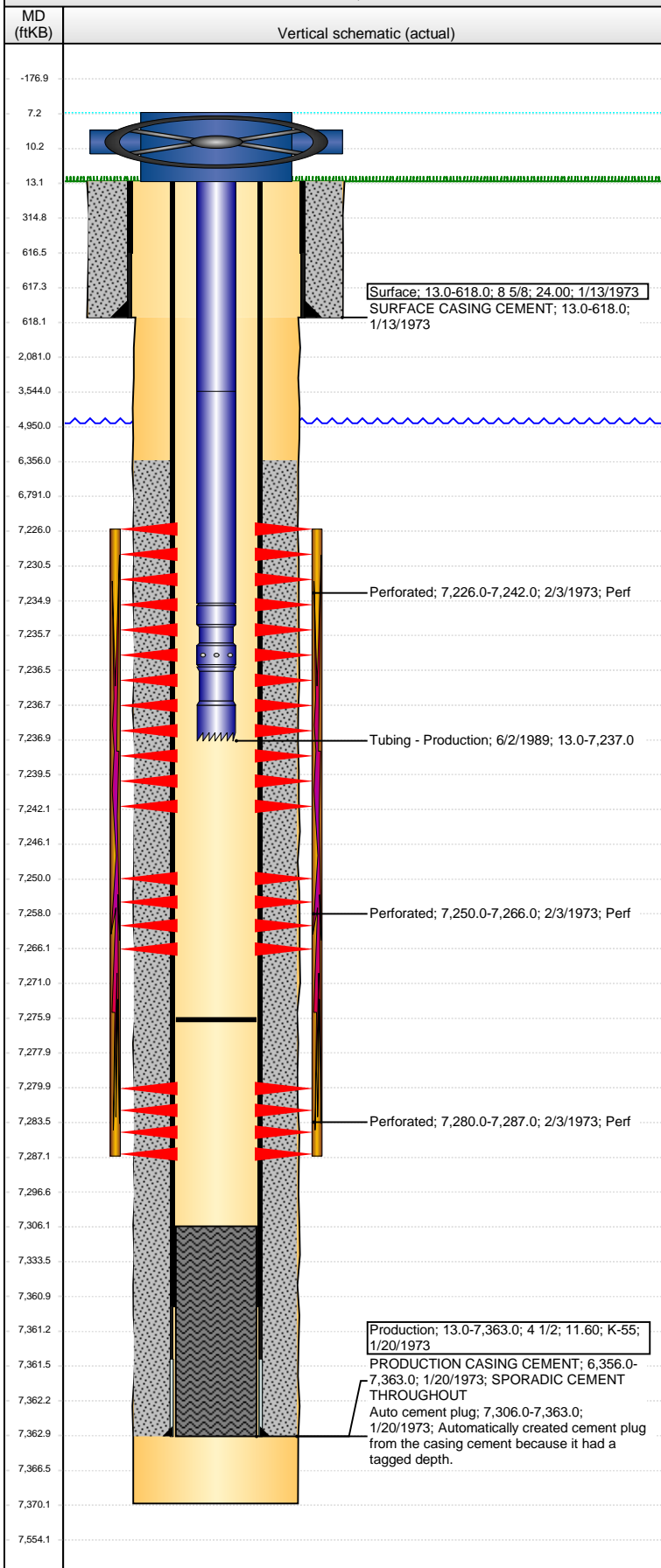


Well Name: FEDERAL 14

VERTICAL - ORIGINAL HOLE, 10/13/2015 8:39:22 AM



Well Header									
API 05-123-07634		Business Unit DJ BASIN			District 15		Well Config VERTICAL		
Original KB Elevation (ft) 4,803.00		KB - GL / MSL (ftKB) 13.00			Spud Date 1/13/1973		P & A Date		
Comment									
Directions To Well									
Congressional Location									
Quarter 1	Quarter 2	Quarter 3 NW	Quarter 4 NE	Section 8	Township 2 N	Twntshp N...	Range 63	Rng E/W Dir W	
Bottom Hole Location									
North-South Distance (ft)			From N or S Line		East-West Distance (ft)			From E or W Line	
Plug Back Total Depths									
Date	Depth (ftKB)	Method			Com				
1/20/1973	7,330.0	CASING TALLY			DEPTH LOGGER ON CBL TAG FILL				
2/3/1973	7,306.0	CASED HOLE LOG							
6/1/1989	7,276.0	TAG							
Wellbore Sections									
Section Des			Size (in)		Act Top, MD (ftKB)		Act Btm, MD (ftKB)		
SURFACE			12 1/4		13.0		618.0		
PRODUCTION			7 7/8		618.0		7,370.0		
Zone Statuses									
Zone Name	Status Date	Status	Fluid Type		Job	Prod Method			
J SAND	2/6/1973	PR			DRILLING/CO...				
Casing Strings									
Surface, 618.0ftKB									
Casing Description Surface		Run Date 1/13/1973	OD (in) 8 5/8	Wt/Len (l...) 24.00	Grade	Top, MD (ft...) 13.0	MD (ftKB) 618.0		
Production, 7,363.0ftKB									
Casing Description Production		Run Date 1/20/1973	OD (in) 4 1/2	Wt/Len (l...) 11.60	Grade K-55	Top, MD (ft...) 13.0	MD (ftKB) 7,363.0		
Cement									
Description SURFACE CASING CEMENT					Top Depth (ftKB) 13.0		Bottom Depth (ftKB) 618.0		
Description PRODUCTION CASING CEMENT					Top Depth (ftKB) 6,356.0		Bottom Depth (ftKB) 7,363.0		
Tubing Strings									
Tubing Description Tubing		Run Date 2/6/1973	String... 1.9	ID (in) 1.610	Wt (lb/ft) 2.90	Grade	Len (ft) 7,208.00	Set De...	
Tubing Description Tubing - Production		Run Date 6/2/1989	String... 1.9	ID (in) 1.610	Wt (lb/ft) 2.75	Grade J-55	Len (ft) 7,224.00	Set De...	
Tubing Components									
Item Des		OD (in)	Wt (lb/ft)	Grade	Jts	Len (ft)	Btm (ftKB)	Btm (TVD) (ftKB)	
Tubing		1.9	2.90	J-55	107	3,531.00	3,544.0		
Tubing		1.9	2.75	J-55	112	3,691.00	7,235.0		
Seal Nipple		1.9				1.50	7,236.5		
Notched collar		1.9				0.50	7,237.0		
Perforation Data									
Zone		Bnch/St g	Entered Shot Total		Top (ftKB)		Btm (ftKB)		Date
J SAND, ORIGINAL HOLE			16		7,226.00		7,242.00		2/3/1973
J SAND, ORIGINAL HOLE			16		7,250.00		7,266.00		2/3/1973
J SAND, ORIGINAL HOLE			7		7,280.00		7,287.00		2/3/1973
Stimulations & Treatments									
Date 2/5/1973	Zone J SAND, ORIGINAL HOLE			Primary Job Type DRILLING/COMPLETION - ORIGINAL					
Technical Result			Tech Result Details				Tech Result Note		
Comment									
Other In Hole									
Run Date		Des			OD (in)		Top (ftKB)		Btm (ftKB)

Well Name: FEDERAL 14

VERTICAL - ORIGINAL HOLE, 10/13/2015 8:39:24 AM

Logs

Date	Type	Top, MD (ftKB)	Btm, MD (ftKB)
1/21/1973	COMPENSATED DENSITY	3,400.0	7,362.0
2/3/1973	CEMENT BOND	6,200.0	7,304.0

