

WPX ENERGY ROCKY MOUNTAIN LLC- EBUS

Federal RGU 331-26-198

**Aztec 1000**

## **Post Job Summary**

# **Cement Surface Casing**

Date Prepared: 09/18/14  
Job Date: 09/16/14

Submitted by: Evan Russell – Grand Junction Cement Engineer

*The Road to Excellence Starts with Safety*

|   |                                   |                            |                           |
|---|-----------------------------------|----------------------------|---------------------------|
| Sold To #: 300721                                 | Ship To #: 3560634                | Quote #: 0021915190        | Sales Order #: 0901658258 |
| Customer: WPX ENERGY ROCKY MOUNTAIN LLC-EBUS      | Customer Rep: JOSH GARIBAY        |                            |                           |
| Well Name: FEDERAL                                | Well #: RGU 331-26-198            | API/UWI #: 05-103-12142-00 |                           |
| Field: SULPHUR CREEK                              | City (SAP): MEEKER                | County/Parish: RIO BLANCO  | State: COLORADO           |
| Legal Description: SE SE-23-1S-98W-1018FSL-657FEL |                                   |                            |                           |
| Contractor: AZTEC WELL                            | Rig/Platform Name/Num: AZTEC 1000 |                            |                           |
| Job BOM: 392189                                   |                                   |                            |                           |
| Well Type: DIRECTIONAL GAS                        |                                   |                            |                           |
| Sales Person: HALAMERICA\HB50180                  | Srvc Supervisor: Thomas Ponder    |                            |                           |
| Job   |                                   |                            |                           |

|                        |        |  |                       |
|------------------------|--------|--|-----------------------|
| Formation Name         |        |  |                       |
| Formation Depth (MD)   | Top    |  | Bottom                |
| Form Type              |        |  | BHST                  |
| Job depth MD           | 3955ft |  | Job Depth TVD         |
| Water Depth            |        |  | Wk Ht Above Floor 5ft |
| Perforation Depth (MD) | From   |  | To                    |

| Well Data         |            |         |       |               |        |       |           |              |            |               |
|-------------------|------------|---------|-------|---------------|--------|-------|-----------|--------------|------------|---------------|
| Description       | New / Used | Size in | ID in | Weight lbm/ft | Thread | Grade | Top MD ft | Bottom MD ft | Top TVD ft | Bottom TVD ft |
| Casing            |            | 9.625   | 8.921 | 36            |        |       | 0         | 3955         |            | 0             |
| Open Hole Section |            |         | 13.5  |               |        |       | 0         | 3965         |            | 0             |

| Tools and Accessories |         |     |      |          |  |                |         |     |      |
|-----------------------|---------|-----|------|----------|--|----------------|---------|-----|------|
| Type                  | Size in | Qty | Make | Depth ft |  | Type           | Size in | Qty | Make |
| Guide Shoe            | 9.625   | 1   | WTF  | 3955     |  | Top Plug       | 9.625   | 1   | WTF  |
| Float Shoe            | 9.625   | 1   |      |          |  | Bottom Plug    | 9.625   | 1   | WTF  |
| Float Collar          | 9.625   | 1   | WTF  | 3911.9   |  | SSR plug set   | 9.625   |     |      |
| Insert Float          | 9.625   | 1   |      |          |  | Plug Container | 9.625   |     |      |
| Stage Tool            | 9.625   | 1   | WTF  | 1785     |  | Centralizers   | 9.625   |     |      |

| Miscellaneous Materials |  |      |  |            |  |      |  |           |  |      |      |
|-------------------------|--|------|--|------------|--|------|--|-----------|--|------|------|
| Gelling Agt             |  | Conc |  | Surfactant |  | Conc |  | Acid Type |  | Qty  | Conc |
| Treatment Fld           |  | Conc |  | Inhibitor  |  | Conc |  | Sand Type |  | Size | Qty  |

| Fluid Data      |              |                      |     |         |                        |                |               |              |                     |  |
|-----------------|--------------|----------------------|-----|---------|------------------------|----------------|---------------|--------------|---------------------|--|
| Stage/Plug #: 1 |              |                      |     |         |                        |                |               |              |                     |  |
| Fluid #         | Stage Type   | Fluid Name           | Qty | Qty UoM | Mixing Density lbm/gal | Yield ft3/sack | Mix Fluid Gal | Rate bbl/min | Total Mix Fluid Gal |  |
| 1               | Fresh Water  | Fresh Water          | 50  | bbl     | 8.33                   |                |               | 4            |                     |  |
|                 |              |                      |     |         |                        |                |               |              |                     |  |
| Fluid #         | Stage Type   | Fluid Name           | Qty | Qty UoM | Mixing Density lbm/gal | Yield ft3/sack | Mix Fluid Gal | Rate bbl/min | Total Mix Fluid Gal |  |
| 2               | VersaCem GJ1 | VERSACEM (TM) SYSTEM | 730 | sack    | 12.8                   | 1.77           |               | 8            | 9.31                |  |
| 9.33 Gal        |              | FRESH WATER          |     |         |                        |                |               |              |                     |  |

| Fluid #             | Stage Type               | Fluid Name               | Qty   | Qty UoM | Mixing Density<br>lbm/gal | Yield<br>ft3/sack | Mix Fluid<br>Gal | Rate<br>bbl/min | Total Mix<br>Fluid<br>Gal |  |
|---------------------|--------------------------|--------------------------|-------|---------|---------------------------|-------------------|------------------|-----------------|---------------------------|--|
| 3                   | VersaCem GJ2             | VERSACEM (TM) SYSTEM     | 280   | sack    | 12.8                      | 1.96              |                  | 8               | 10.93                     |  |
| 10.91 Gal           |                          | FRESH WATER              |       |         |                           |                   |                  |                 |                           |  |
|                     |                          |                          |       |         |                           |                   |                  |                 |                           |  |
| Fluid #             | Stage Type               | Fluid Name               | Qty   | Qty UoM | Mixing Density<br>lbm/gal | Yield<br>ft3/sack | Mix Fluid<br>Gal | Rate<br>bbl/min | Total Mix<br>Fluid<br>Gal |  |
| 4                   | Fresh Water Displacement | Fresh Water Displacement | 301.7 | bbl     | 8.3                       |                   |                  | 10              |                           |  |
|                     |                          |                          |       |         |                           |                   |                  |                 |                           |  |
| Cement Left In Pipe |                          | Amount                   | 43 ft |         | Reason                    |                   |                  | Shoe Joint      |                           |  |
| Fluid Data          |                          |                          |       |         |                           |                   |                  |                 |                           |  |
| Stage/Plug #: 2     |                          |                          |       |         |                           |                   |                  |                 |                           |  |
| Fluid #             | Stage Type               | Fluid Name               | Qty   | Qty UoM | Mixing Density<br>lbm/gal | Yield<br>ft3/sack | Mix Fluid<br>Gal | Rate<br>bbl/min | Total Mix<br>Fluid<br>Gal |  |
| 1                   | Fresh Water              | Fresh Water              | 30    | bbl     | 8.3                       |                   |                  | 4               |                           |  |
|                     |                          |                          |       |         |                           |                   |                  |                 |                           |  |
| Fluid #             | Stage Type               | Fluid Name               | Qty   | Qty UoM | Mixing Density<br>lbm/gal | Yield<br>ft3/sack | Mix Fluid<br>Gal | Rate<br>bbl/min | Total Mix<br>Fluid<br>Gal |  |
| 2                   | VersaCem GJ2             | VERSACEM (TM) SYSTEM     | 1050  | sack    | 12.8                      | 1.96              |                  | 8               | 10.93                     |  |
| 10.91 Gal           |                          | FRESH WATER              |       |         |                           |                   |                  |                 |                           |  |
|                     |                          |                          |       |         |                           |                   |                  |                 |                           |  |
| Fluid #             | Stage Type               | Fluid Name               | Qty   | Qty UoM | Mixing Density<br>lbm/gal | Yield<br>ft3/sack | Mix Fluid<br>Gal | Rate<br>bbl/min | Total Mix<br>Fluid<br>Gal |  |
| 3                   | Fresh Water Displacement | Fresh Water Displacement | 138   | bbl     | 8.3                       |                   |                  | 4               |                           |  |
|                     |                          |                          |       |         |                           |                   |                  |                 |                           |  |
| Fluid #             | Stage Type               | Fluid Name               | Qty   | Qty UoM | Mixing Density<br>lbm/gal | Yield<br>ft3/sack | Mix Fluid<br>Gal | Rate<br>bbl/min | Total Mix<br>Fluid<br>Gal |  |
| 4                   | Halcem                   | HALCEM (TM) SYSTEM       | 50    | sack    | 15.8                      | 1.19              |                  | 1.2             | 5.23                      |  |
| 5.15 Gal            |                          | FRESH WATER              |       |         |                           |                   |                  |                 |                           |  |
|                     |                          |                          |       |         |                           |                   |                  |                 |                           |  |
| Cement Left In Pipe |                          | Amount                   | 43 ft |         | Reason                    |                   |                  | Shoe Joint      |                           |  |
| Comment             |                          |                          |       |         |                           |                   |                  |                 |                           |  |

## 1.1 Job Event Log

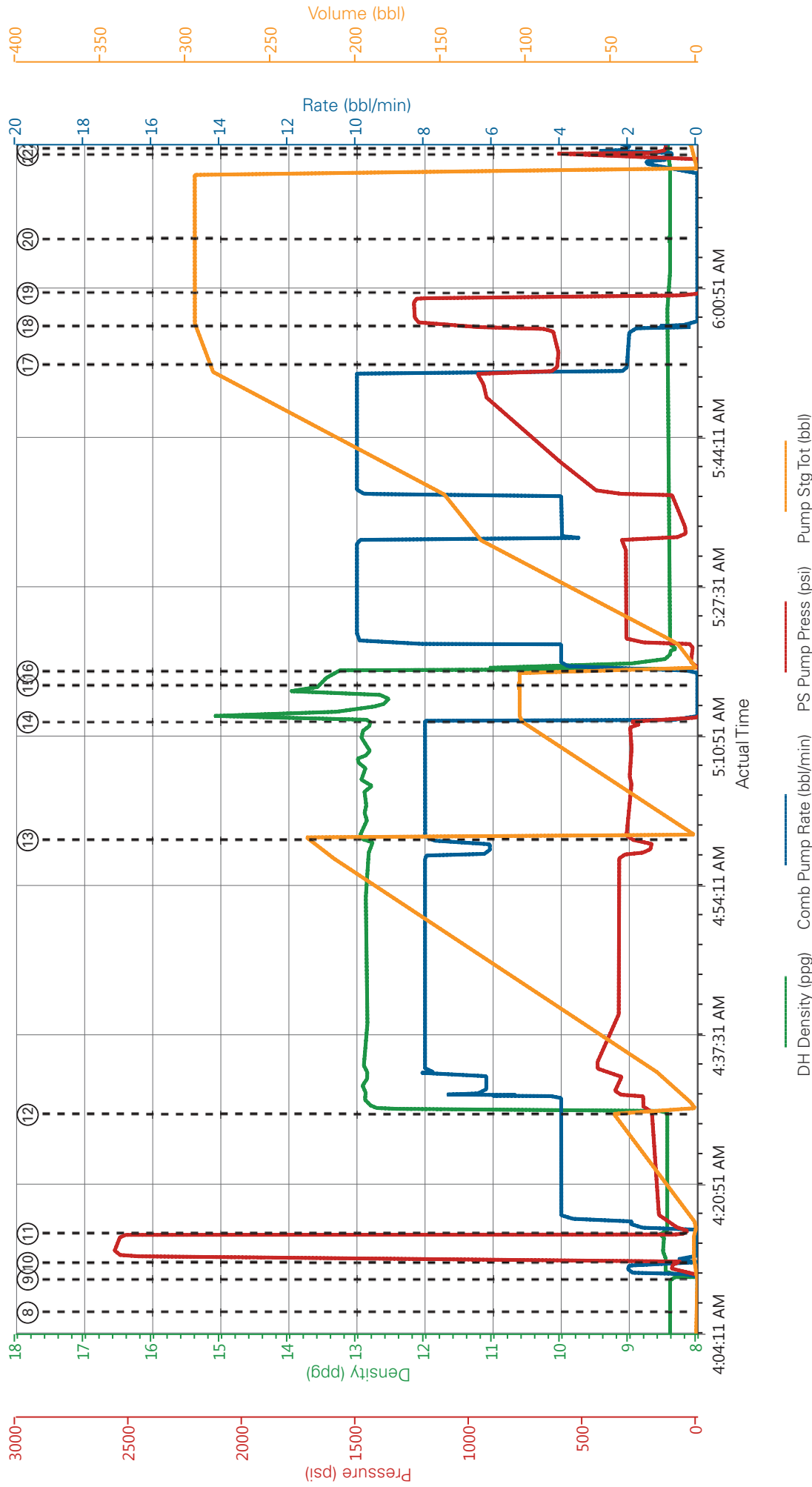
| Type  | Seq.<br>No. | Activity                              | Date      | Time     | Source | DH Density<br>(ppg) | Comb<br>Pump Rate<br>(bbl/min) | PS Pump<br>Press<br>(psi) | Pump Sig<br>Tot<br>(bbl) | Comment   |
|-------|-------------|---------------------------------------|-----------|----------|--------|---------------------|--------------------------------|---------------------------|--------------------------|---|
| Event | 1           | Call Out                              | 9/15/2014 | 17:30:00 | USER   |                     |                                |                           |                          | ON LOCATION TIME @ 0030   |
| Event | 2           | Pre-Convoy Safety Meeting             | 9/15/2014 | 20:00:00 | USER   |                     |                                |                           |                          | ALL HES PRESENT FOR PRE-CONVOY SAFETY HUDDLE  |
| Event | 3           | Arrive At Loc                         | 9/16/2014 | 00:00:00 | USER   |                     |                                |                           |                          | RIG WAS STILL RUNNING CASING WHEN THE CREW ARRIVED ON LOCATION  |
| Event | 4           | Assessment Of Location Safety Meeting | 9/16/2014 | 03:00:00 | USER   |                     |                                |                           |                          | TD - 3965', TP - 3955', MSC - 1785', SJ - 43.1', MUD - 9.4 PPG, OPEN HOLE - 14 3/4" TO 1700', OPEN HOLE - 13 1/2" FROM 1700' TO TD, SURFACE CASING - 9 5/8" 36# FROM SURFACE TO 3455', SURFACE CASING FROM 3455 TO TP |
| Event | 5           | Pre-Rig Up Safety Meeting             | 9/16/2014 | 03:10:00 | USER   |                     |                                |                           |                          | ALL HES PRESENT JSA WAS CONDUCTED   |
| Event | 6           | Rig-Up Equipment                      | 9/16/2014 | 03:15:00 | USER   |                     |                                |                           |                          | 1 - 550 PICKUP TRUCK, 1 - ELITE PUMPING UNIT, 1 - 660 CUFT BULK TRAILER, 1 - 400 CUFT BODY LOAD, 2 - 1710 CUFT STORAGE SILOS, 2" CIRCULATING IRON, 9 5/8" PLUG CONTAINER AND QUICK LATCH                              |
| Event | 7           | Pre-Job Safety Meeting                | 9/16/2014 | 03:50:00 | USER   |                     |                                |                           |                          | ALL HES PRESENT, RIG CREW , RIG STARTED CIRCULATING ON BOTTOM @ 0245  |
| Event | 8           | Start Job                             | 9/16/2014 | 04:06:55 | COM6   |                     |                                |                           |                          | DISCONNECTED RIG FROM CIRCULATING, RIGGED UP HES  |
| Event | 9           | Prime Pumps                           | 9/16/2014 | 04:10:37 | COM6   | 8.33                | 2                              | 120                       | 2                        | FILL LINES  |
| Event | 10          | Test Lines                            | 9/16/2014 | 04:12:27 | COM6   |                     | .1                             | 2571                      | .1                       | GOOD PRESSURE TEST NO   |

| LEAKS IN THE LINES  |    |   |           |          |      |      |    |     |       |
|---|----|---|-----------|----------|------|------|----|-----|-------|
| Event   | 11 | Pump Spacer 1   | 9/16/2014 | 04:15:43 | COM6 | 8.33 | 4  | 195 | 50    |
| FRESH WATER   |    |   |           |          |      |      |    |     |       |
| 730 SKS 12.8 PPG 1.77<br>FT3/SK 9.31 GAL/SK, 60#<br>TUFF FIBER IN THE FIRST<br>100 BBL, SLOWED DOWN<br>AT THE END OF LEAD TO<br>GET ALL CEMENT OUT OF<br>THE SILO WHILE<br>MAINTAINING DENSITY    |    |   |           |          |      |      |    |     |       |
| Event   | 12 | Pump Lead Cement                                      | 9/16/2014 | 04:29:00 | COM6 | 12.8 | 8  | 440 | 230.1 |
| 280 SKS 12.8 PPG 1.96<br>FT3/SK 10.93 GAL/SK  |    |   |           |          |      |      |    |     |       |
| Event   | 13 | Pump Tail Cement                                      | 9/16/2014 | 04:59:38 | COM6 | 12.8 | 8  | 315 | 97.7  |
| REMOVED TOP CAP OF<br>PLUG CONTAINER TO DROP<br>1ST STAGE SHUTOFF PLUG  |    |   |           |          |      |      |    |     |       |
| Event   | 14 | Shutdown  | 9/16/2014 | 05:12:48 | USER |      |    |     |       |
| Event   | 15 | Drop Plug   | 9/16/2014 | 05:16:55 | USER |      |    |     |       |
| PLUG DROP VERIFIED WITH<br>TOP CAP OFF  |    |   |           |          |      |      |    |     |       |
| FRESH WATER, SLOWED<br>RATE TO 4 BPM @ 128<br>AWAY TO ALLOW PLUG TO<br>GO THROUGH MSC,<br>BROUGHT RATE BACK TO 10<br>BPM @ 148 BBL AWAY,<br>WASHED UP WITH THE<br>FIRST 10 BBL OF<br>DISPLACEMENT |    |   |           |          |      |      |    |     |       |
| Event   | 16 | Pump Displacement                                     | 9/16/2014 | 05:18:27 | COM6 | 8.33 | 10 | 970 | 281.7 |
| LOST RETURNS WITH 30 BBL<br>LEFT OF DISPLACEMENT,<br>GOOD RETURNS<br>OTHERWISE THROUGH OUT<br>THE JOB   |    |   |           |          |      |      |    |     |       |
| Event   | 17 | Slow Rate   | 9/16/2014 | 05:51:23 | USER | 8.33 | 2  | 616 | 20    |
| PLUG BUMPED   |    |   |           |          |      |      |    |     |       |
| Event   | 18 | Bump Plug   | 9/16/2014 | 05:56:58 | COM6 |      |    |     |       |
| Event   | 19 | Check Floats  | 9/16/2014 | 06:00:41 | USER |      |    |     |       |
| FLOATS HELD, 1 3/4 BBL<br>BACK TO THE<br>DISPLACEMENT TANKS   |    |   |           |          |      |      |    |     |       |
| Event   | 20 | Drop Opening Device<br>For Multiple Stage<br>Cementer | 9/16/2014 | 06:06:42 | USER |      |    |     |       |
| REMOVED TOP CAP OF<br>PLUG CONTAINER TO DROP<br>OPENING DEVICE, PRE-  |    |   |           |          |      |      |    |     |       |

|       |    |                                 |           |          |      |      |    |       |     |   |
|-------|----|---------------------------------|-----------|----------|------|------|----|-------|-----|---|
| Event | 21 | Open Multiple Stage<br>Cementer | 9/16/2014 | 06:16:05 | USER | 8.33 | 1  | 646   | 2   | LOADED CLOSING PLUG<br>BEFORE REPLACING   |
| Event | 22 | Circulate Well                  | 9/16/2014 | 06:16:47 | USER | 8.33 | 4  | 280   | 30  | MSC OPENED @ 646 PSI  |
| Event | 23 | Pump Lead Cement                | 9/16/2014 | 06:27:56 | COM6 | 12.8 | 8  | 366.5 | 412 | TOOK 16 BBL OF<br>CIRCULATING TO REGAIN<br>RETURNS, SLOWED RATE TO<br>MIX CEMENT TO START 2ND<br>STAGE  |
| Event | 24 | Shutdown                        | 9/16/2014 | 07:18:17 | USER | 12.8 | 8  | 366.5 | 412 | 1050 SKS 12.8 PPG 1.96<br>FT3/SK 10.93 GAL/SK, 45#<br>TUFF FIBER IN THE FIRST<br>100 BBL OF CEMENT  |
| Event | 25 | Drop Plug                       | 9/16/2014 | 07:19:27 | USER | 8.33 | 1  | 646   | 2   | SAW SMALL TRACES OF<br>CEMENT TO SURFACE<br>WHEN SHUTTING DOWN,<br>CIRCULATED 70 BBL OF<br>CEMENT TO SURFACE<br>FROM THE 1ST STAGE, TO<br>LOSS ON FIRST STAGE 65<br>BBL   |
| Event | 26 | Pump Displacement               | 9/16/2014 | 07:21:07 | COM6 | 8.33 | 10 | 402   | 45  | CLOSING PLUG DROP<br>VERIFIED VIA TATTLE TELL<br>BY CO REP  |
| Event | 27 | Slow Rate                       | 9/16/2014 | 07:26:39 | USER | 8.33 | 4  | 157   | 93  | FRESH WATER, WASHED UP<br>WITH THE FIRST 10 BBL OF<br>DISPLACEMENT  |
| Event | 28 | Bump Plug                       | 9/16/2014 | 07:51:43 | USER | 8.33 | 4  | 380   | 138 | GOOD RETURNS,<br>CIRCULATED 120 BBL OF<br>CEMENT TO SURFACE,<br>TOTAL LOSS ON 2ND STAGE<br>40 BBL, SLOWED TO 4 BPM<br>AS PER CO REP REQUEST TO<br>ALLOW CEMENT TIME TO<br>GAIN GEL STRENGTH AND<br>HOPEFULLY STOP IT FROM<br>FALLING BACK TO FAR<br>WHEN MSC CLOSES |
| Event | 29 |                                 |           |          |      |      |    |       |     | PLUG BUMPED   |

|       |    |                                  |           |          |      |      |      |  |
|-------|----|----------------------------------|-----------|----------|------|------|------|--|
| Event | 29 | Close Multiple Stage<br>Cementer | 9/16/2014 | 07:54:50 | USER | 1730 | 138  | MSC CLOSED, 1 1/2 BBL<br>BACK TO THE<br>DISPLACEMENT TANKS   |
| Event | 30 | Wait on Cement                   | 9/16/2014 | 08:04:04 | USER |      |      | AS PER CO REP REQUEST<br>WAITED 2.5 HOURS FOR<br>CEMENT TO FALL BACK,<br>CEMENT FELL BACK APPROX<br>30 FT, CO REP REQUESTED<br>THAT WE FILL TO THE TOP<br>OF THE CONDUCTOR,<br>RIGGED UP TO CELLAR<br>WITH IRON AND TO TOP<br>OUT BULK TRUCK |
| Event | 31 | Prime Pumps                      | 9/16/2014 | 10:36:21 | USER |      |      | RE PRIME TRUCK BEFORE<br>STARTING TOP OUT  |
| Event | 32 | Pump Water                       | 9/16/2014 | 10:43:16 | USER |      |      | FRESH WATER TO MAKE<br>SURE LINES ARE CLEAR  |
| Event | 33 | Pump Cement                      | 9/16/2014 | 10:44:20 | COM6 | 15.6 | 10.5 | 50 SKS 15.6 PPG 1.19<br>FT3/SK 5.23 GAL/SK WITH<br>50# CACL  |
| Event | 34 | Cement Returns to<br>Surface     | 9/16/2014 | 10:51:21 | USER |      |      | GOT CEMENT TO SURFACE<br>@ 4.5 BBL AWAY, USED<br>REMAINING 5 BBL INTO<br>CELLAR RING TO ALLOW<br>FOR ANY CEMENT TO FALL  |
| Event | 35 | Pump Water                       | 9/16/2014 | 10:51:25 | USER |      |      | FRESH WATER TO CLEAR<br>LINES  |
| Event | 36 | End Job                          | 9/16/2014 | 10:57:00 | USER |      |      | THANK YOU FOR CHOOSING<br>HALLIBURTON, THOMAS<br>PONDER AND CREW   |

WPX - FEDERAL RGU 331-29-198 - 9 5/8" SURFACE 1ST STAGE



- |   |                          |                     |   |
|---|--------------------------|---------------------|---|
| ① Call Out                              | ⑦ Pre-Job Safety Meeting | ⑬ Pump Tail Cement  | ⑲ Check Floats                                    |
| ② Pre-Convoy Safety Meeting             | ⑧ Start Job              | ⑭ Shutdown          | ⑳ Drop Opening Device For Multiple Stage Cementer |
| ③ Arrive At Loc                         | ⑨ Prime Pumps            | ⑮ Drop Plug         | ㉑ Open Multiple Stage Cementer                    |
| ④ Assessment Of Location Safety Meeting | ⑩ Test Lines             | ⑯ Pump Displacement | ㉒ Circulate Well                                  |
| ⑤ Pre-Rig Up Safety Meeting             | ⑪ Pump Spacer 1          | ⑰ Slow Rate         | ㉓ Pump Lead Cement                                |
| ⑥ Rig-Up Equipment                      | ⑫ Pump Lead Cement       | ⑱ Bump Plug         |   |

▼ **HALLIBURTON** | iCem® Service

Created: 2014-09-16 03:43:21, Version: 3.0.121

Edit

Customer : WPX ENERGY ROCKY MOUNTAIN LLC-EBUS

Job Date : 9/16/2014 3:44:44 AM

Well : FEDERAL RGU 331-26-198

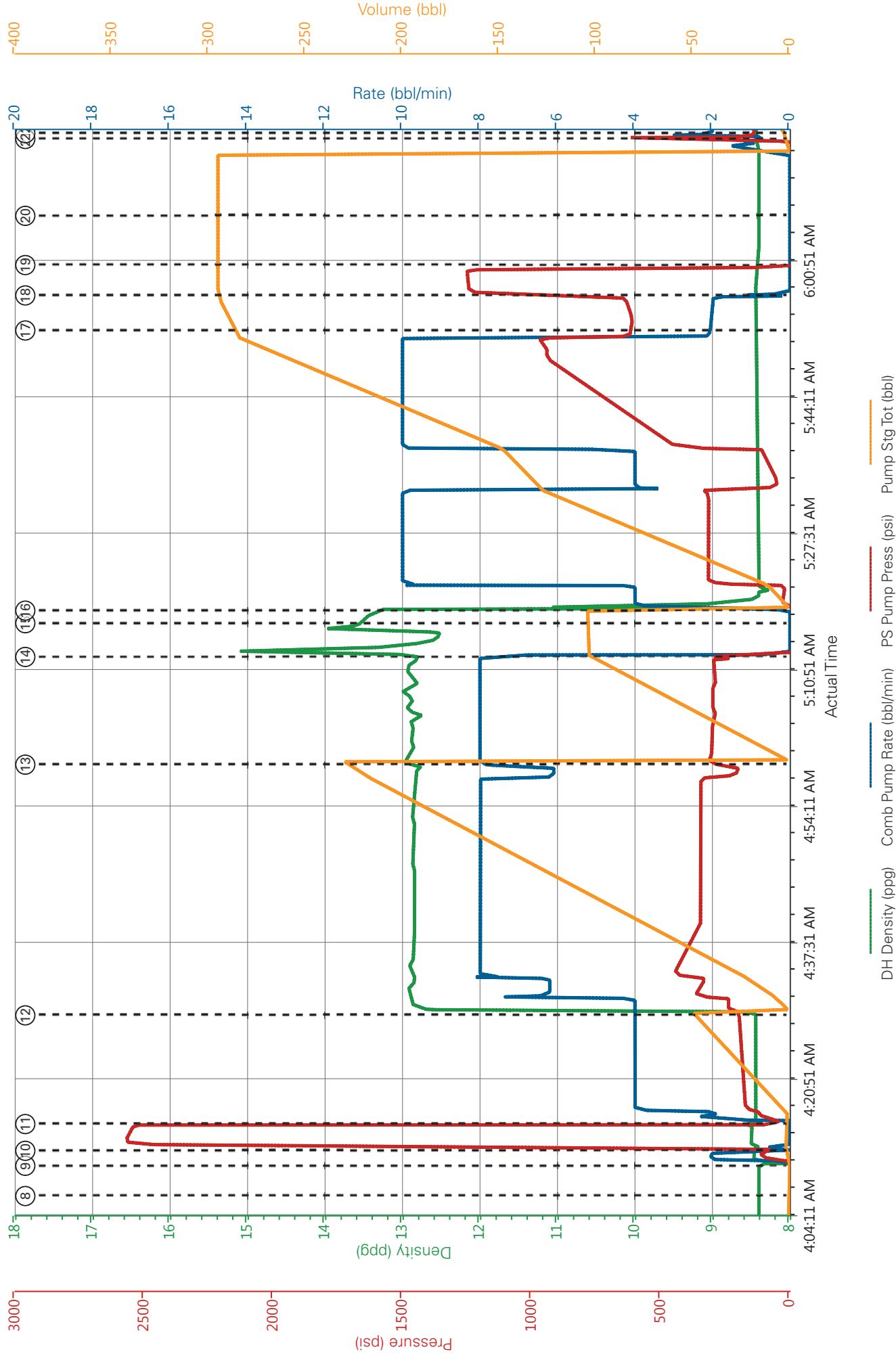
Representative : JOSH GARIBAY

Sales Order # : 901658258

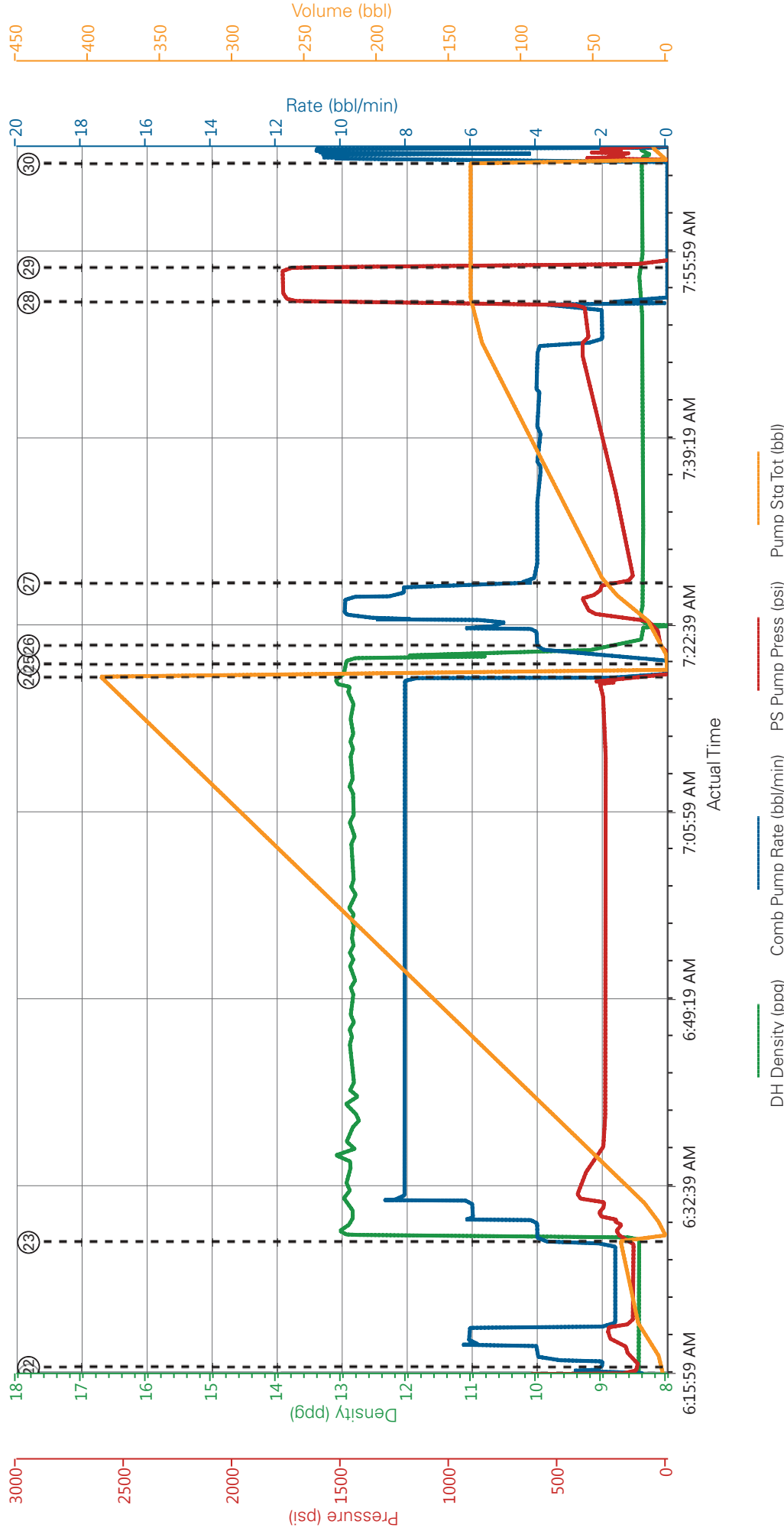
ELITE #7 : TRAVIS BROWN / ANDREW LINN  
THOMAS PONDER



WPX - FEDERAL RGU 331-29-198 - 9 5/8" SURFACE 1ST STAGE



WPX - FEDERAL RGU 331-29-198 - 9 5/8" SURFACE 2ND STAGE



|   |                     |  |                                  |                              |
|---|---------------------|--|----------------------------------|------------------------------|
| ① Call Out                              | ⑨ Prime Pumps       | ⑰ Slow Rate  | 25 Drop Plug                     | 33 Pump Cement               |
| ② Pre-Convoy Safety Meeting             | ⑩ Test Lines        | ⑱ Bump Plug  | 26 Pump Displacement             | 34 Cement Returns to Surface |
| ③ Arrive At Loc                         | ⑪ Pump Spacer 1     | ⑲ Check Floats                                     | 27 Slow Rate                     |                              |
| ④ Assessment Of Location Safety Meeting | ⑫ Pump Lead Cement  | 20 Drop Opening Device For Multiple Stage Cementer | 28 Bump Plug                     |                              |
| ⑤ Pre-Rig Up Safety Meeting             | ⑬ Pump Tail Cement  | 21 Open Multiple Stage Cementer                    | 29 Close Multiple Stage Cementer |                              |
| ⑥ Rig-Up Equipment                      | ⑭ Shutdown          | 22 Circulate Well                                  | 30 Wait on Cement                |                              |
| ⑦ Pre-Job Safety Meeting                | ⑮ Drop Plug         | 23 Pump Lead Cement                                | 31 Prime Pumps                   |                              |
| ⑧ Start Job                             | ⑯ Pump Displacement | 24 Shutdown  | 32 Pump Water                    |                              |

▼ **HALLIBURTON** | iCem® Service

Created: 2014-09-16 03:43:21, Version: 3.0.121

Edit

Customer : WPX ENERGY ROCKY MOUNTAIN LLC-EBUS

Job Date : 9/16/2014 3:44:44 AM

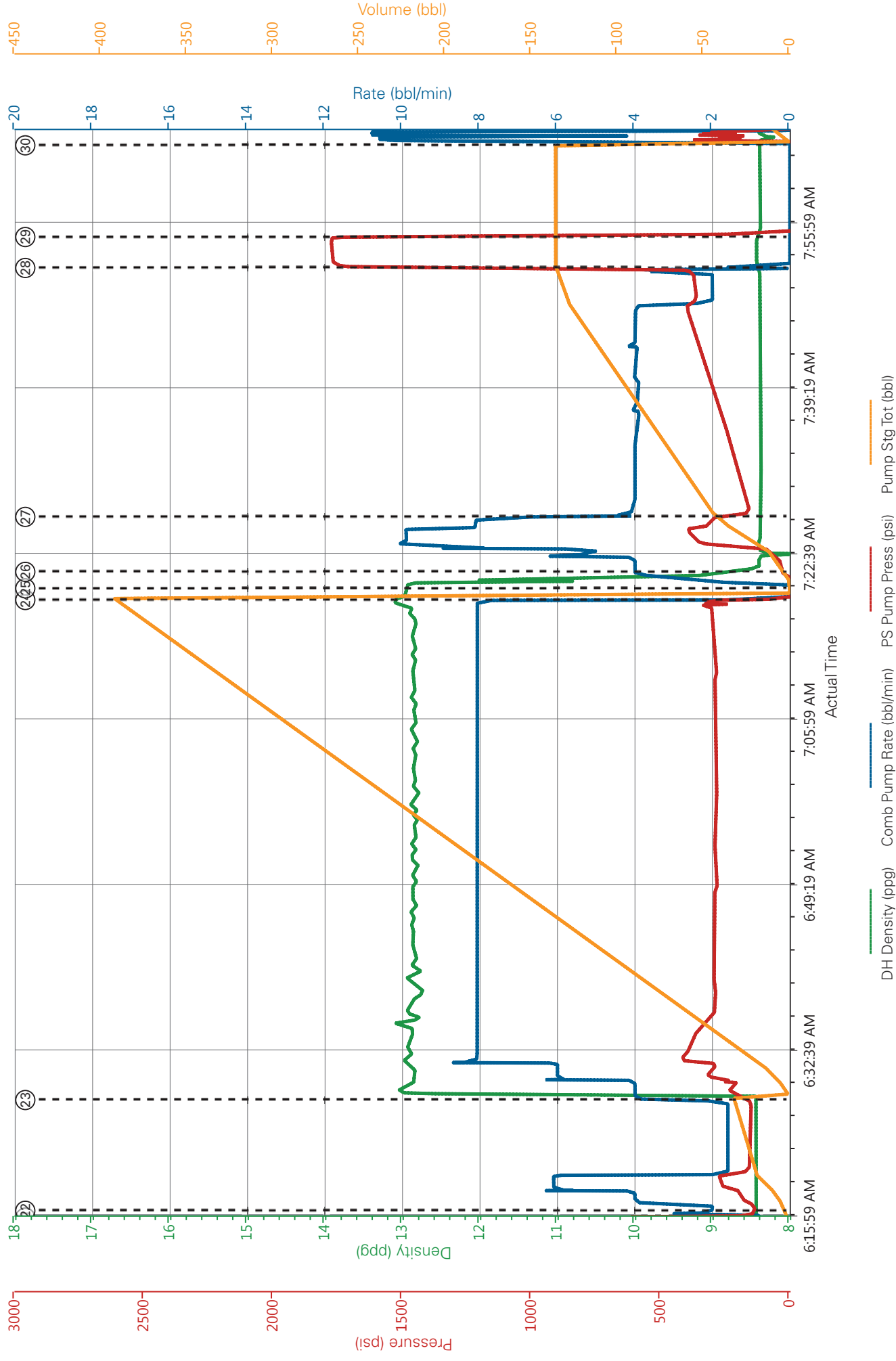
Well : FEDERAL RGU 331-26-198

Representative : JOSH GARIBAY

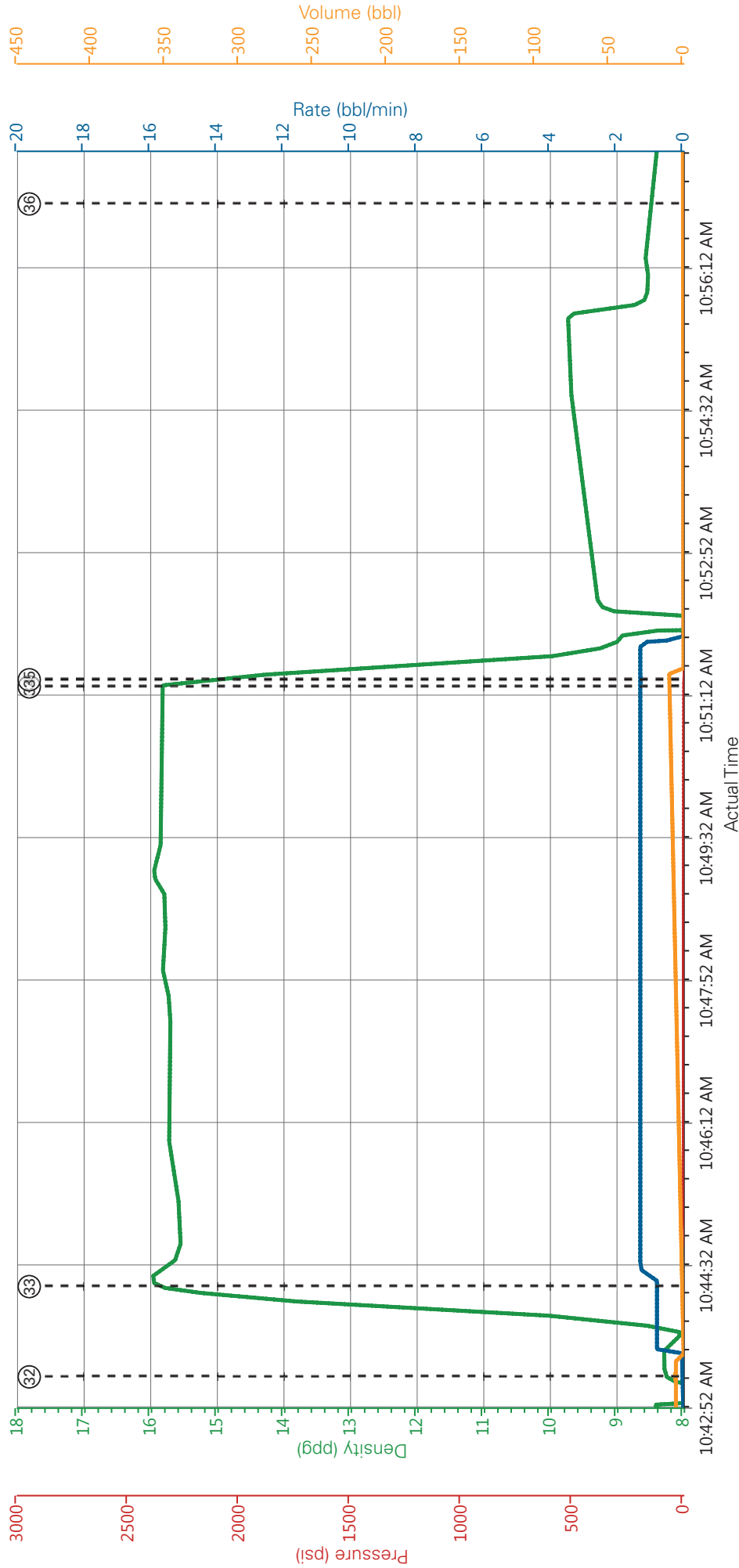
Sales Order # : 901658258

ELITE #7 : TRAVIS BROWN / ANDREW LINN  
THOMAS PONDER

WPX - FEDERAL RGU 331-29-198 - 9 5/8" SURFACE 2ND STAGE



WPX - FEDERAL RGU 331-29-198 - 9 5/8" SURFACE TOP OUT



|   |                     |  |                                  |                              |
|---|---------------------|--|----------------------------------|------------------------------|
| ① Call Out                              | ⑨ Prime Pumps       | ⑰ Slow Rate  | 25 Drop Plug                     | 33 Pump Cement               |
| ② Pre-Convoy Safety Meeting             | ⑩ Test Lines        | ⑱ Bump Plug  | 26 Pump Displacement             | 34 Cement Returns to Surface |
| ③ Arrive At Loc                         | ⑪ Pump Spacer 1     | ⑲ Check Floats                                     | 27 Slow Rate                     | 35 Pump Water                |
| ④ Assessment Of Location Safety Meeting | ⑫ Pump Lead Cement  | 20 Drop Opening Device For Multiple Stage Cementer | 28 Bump Plug                     | 36 End Job                   |
| ⑤ Pre-Rig Up Safety Meeting             | ⑬ Pump Tail Cement  | 21 Open Multiple Stage Cementer                    | 29 Close Multiple Stage Cementer |                              |
| ⑥ Rig-Up Equipment                      | ⑭ Shutdown          | 22 Circulate Well                                  | 30 Wait on Cement                |                              |
| ⑦ Pre-Job Safety Meeting                | ⑮ Drop Plug         | 23 Pump Lead Cement                                | 31 Prime Pumps                   |                              |
| ⑧ Start Job                             | ⑯ Pump Displacement | 24 Shutdown  | 32 Pump Water                    |                              |

▼ **HALLIBURTON** | iCem® Service

Created: 2014-09-16 03:43:21, Version: 3.0.121

Edit

Customer : WPX ENERGY ROCKY MOUNTAIN LLC-EBUS

Job Date : 9/16/2014 3:44:44 AM

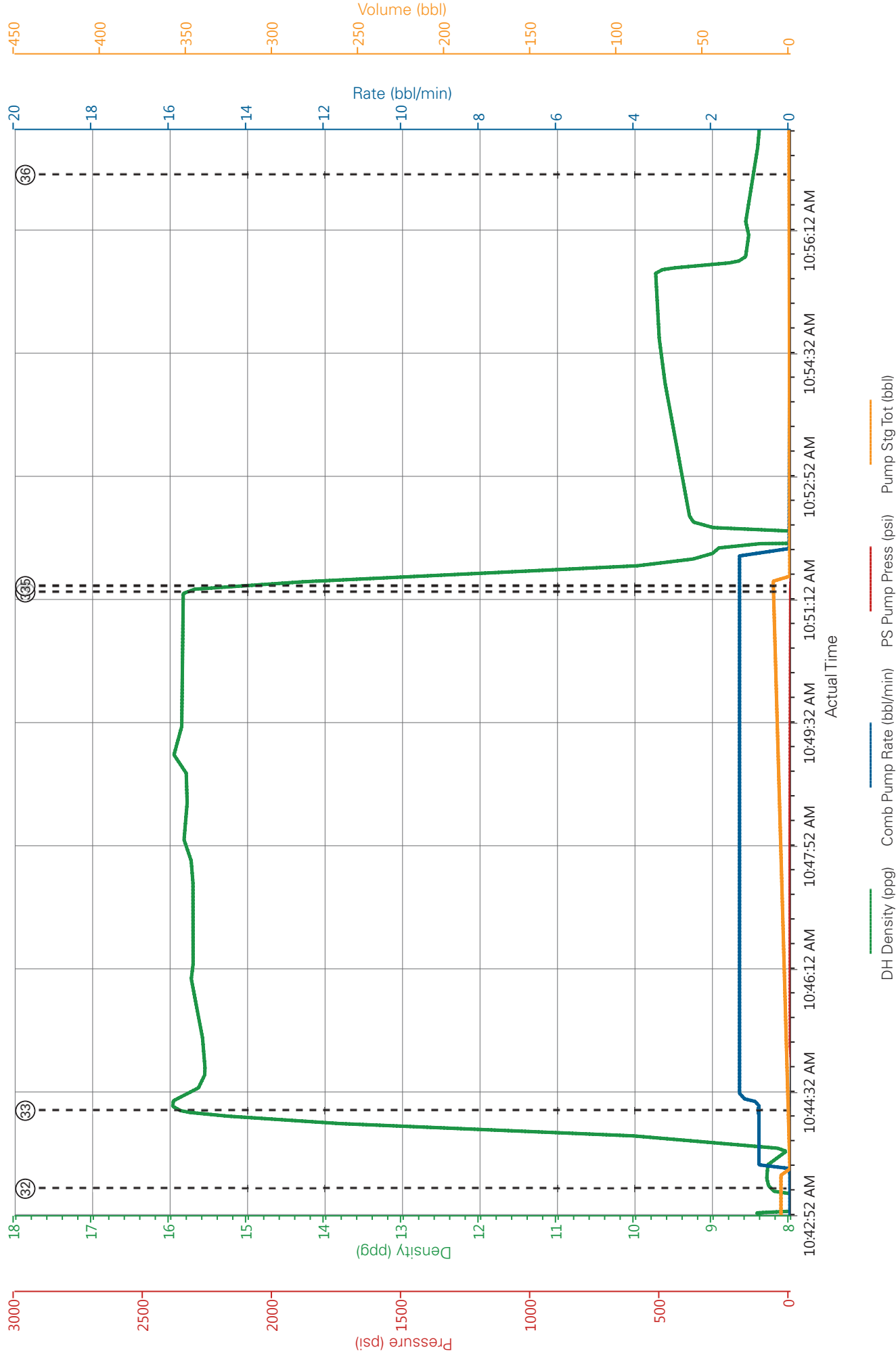
Well : FEDERAL RGU 331-26-198

Representative : JOSH GARIBAY

Sales Order # : 901658258

ELITE #7 : TRAVIS BROWN / ANDREW LINN  
THOMAS PONDER

WPX - FEDERAL RGU 331-29-198 - 9 5/8" SURFACE TOP OUT



# HALLIBURTON

Company: WPX

Date: 9/16/2014

Submitted by: THOMAS PONDER

Date Rec.: 9/16/2014

Attention: LARRY COOKSEY

S.O.# 901658258

Lease FEDERAL

Job Type: SQUEEZE

Well # RGU 331-26-198

Specific Gravity *MAX* 1

pH *8* 7

Potassium (K) *5000* 0 Mg / L

Calcium (Ca) *500* 120 Mg / L

Iron (FE2) *300* 0 Mg / L

Chlorides (Cl) *3000* 500 Mg / L

Sulfates (SO<sub>4</sub>) *1500* <200 Mg / L

Carbonates hardness

Temp *40-80* 54 Deg

Total Dissolved Solids 360 Mg / L

Respectfully: THOMAS PONDER

Title: CEMENTING SUPERVISOR

Location: GRAND JCT, CO

|  |                                |   |
|--|--------------------------------|---|
| <b>Sales Order #:</b><br>0901658258                    | <b>Line Item:</b><br>10        | <b>Survey Conducted Date:</b><br>9/17/2014                    |
| <b>Customer:</b><br>WPX ENERGY ROCKY MOUNTAIN LLC-EBUS |                                | <b>Job Type (BOM):</b><br>CMT MULTIPLE STAGES BOM             |
| <b>Customer Representative:</b>                        |                                | <b>API / UWI: (leave blank if unknown)</b><br>05-103-12142-00 |
| <b>Well Name:</b><br>FEDERAL                           |                                | <b>Well Number:</b><br>0080641197                             |
| <b>Well Type:</b><br>DIRECTIONAL GAS                   | <b>Well Country:</b><br>USA    |   |
| <b>H2S Present:</b><br>No                              | <b>Well State:</b><br>COLORADO | <b>Well County:</b><br>RIO BLANCO                             |

Dear Customer,

We hope that you were satisfied with the service quality of this job performed by Halliburton. It is the aim of our management and service personnel to deliver equipment and service of a standard unmatched in the service sector of the energy industry.

Please take the time to let us know if our performance met with your satisfaction. Please be as critical as possible to ensure we constantly improve our service. Your comments are of great value to us and are intended for the exclusive use of Halliburton.

### CUSTOMER SATISFACTION SURVEY

| CATEGORY                | CUSTOMER SATISFACTION RESPONSE                                 |           |
|-------------------------|--|-----------|
| Survey Conducted Date   | The date the survey was conducted                              | 9/16/2014 |
| Survey Interviewer      | The survey interviewer is the person who initiated the survey. | HX41187   |
| Customer Participation  | Did the customer participate in this survey? (Y/N)             | No        |
| Customer Representative | Enter the Customer representative name                         |           |
| HSE                     | Was our HSE performance satisfactory? Circle Y or N            |           |
| Equipment               | Were you satisfied with our Equipment? Circle Y or N           |           |
| Personnel               | Were you satisfied with our people? Circle Y or N              |           |
| Customer Comment        | Customer's Comment   |           |

|                           |
|---------------------------|
| <b>CUSTOMER SIGNATURE</b> |
|---------------------------|

|  |                                |   |
|--|--------------------------------|---|
| <b>Sales Order #:</b><br>0901658258                    | <b>Line Item:</b><br>10        | <b>Survey Conducted Date:</b><br>9/17/2014                    |
| <b>Customer:</b><br>WPX ENERGY ROCKY MOUNTAIN LLC-EBUS |                                | <b>Job Type (BOM):</b><br>CMT MULTIPLE STAGES BOM             |
| <b>Customer Representative:</b>                        |                                | <b>API / UWI: (leave blank if unknown)</b><br>05-103-12142-00 |
| <b>Well Name:</b><br>FEDERAL                           |                                | <b>Well Number:</b><br>0080641197                             |
| <b>Well Type:</b><br>DIRECTIONAL GAS                   | <b>Well Country:</b><br>USA    |   |
| <b>H2S Present:</b><br>No                              | <b>Well State:</b><br>COLORADO | <b>Well County:</b><br>RIO BLANCO                             |

### KEY PERFORMANCE INDICATORS

| General   |           |
|---|-----------|
| <b>Survey Conducted Date</b><br>The date the survey was conducted | 9/17/2014 |

| Cementing KPI Survey   |                         |
|--|-------------------------|
| <b>Type of Job</b><br>Select the type of job. (Cementing or Non-Cementing)   | 0                       |
| <b>Select the Maximum Deviation range for this Job</b><br>What is the highest deviation for the job you just completed? This may not be the maximum well deviation.  | Deviated                |
| <b>Total Operating Time (hours)</b><br>Total Operating Hours Including Rig-up, Pumping, Rig-down. Enter in decimal format.   | 7                       |
| <b>HSE Incident, Accident, Injury</b><br>HSE Incident, Accident, Injury. This should be recordable incidents only.   | No                      |
| <b>Was the job purpose achieved?</b><br>Was the job delivered correctly as per customer agreed design?   | Yes                     |
| <b>Operating Hours (Pumping Hours)</b><br>Total number of hours pumping fluid on this job. Enter in decimal format.  | 5                       |
| <b>Customer Non-Productive Rig Time (hrs)</b><br>Lost time due to Halliburton in the start, execution, or completion of an ordered service or product, or delays in a follow-on service. Enter in decimal format. 0 if none. | 0                       |
| <b>Type of Rig Classification Job Was Performed</b><br>Type Of Rig (classification) Job Was Performed On   | Drilling Rig (Portable) |
| <b>Number Of JSAs Performed</b><br>Number Of Jsas Performed  | 8                       |
| <b>Number of Unplanned Shutdowns</b><br>Unplanned shutdown is when injection stops for any period of time.   | 0                       |
| <b>Was this a Primary Cement Job (Yes / No)</b>  | Yes                     |



|  |                                |   |
|--|--------------------------------|---|
| <b>Sales Order #:</b><br>0901658258                    | <b>Line Item:</b><br>10        | <b>Survey Conducted Date:</b><br>9/17/2014                    |
| <b>Customer:</b><br>WPX ENERGY ROCKY MOUNTAIN LLC-EBUS |                                | <b>Job Type (BOM):</b><br>CMT MULTIPLE STAGES BOM             |
| <b>Customer Representative:</b>                        |                                | <b>API / UWI: (leave blank if unknown)</b><br>05-103-12142-00 |
| <b>Well Name:</b><br>FEDERAL                           |                                | <b>Well Number:</b><br>0080641197                             |
| <b>Well Type:</b><br>DIRECTIONAL GAS                   | <b>Well Country:</b><br>USA    |   |
| <b>H2S Present:</b><br>No                              | <b>Well State:</b><br>COLORADO | <b>Well County:</b><br>RIO BLANCO                             |

|  |      |
|--|------|
| Primary Cement Job= Casing job, Liner job, or Tie-back job.  |      |
| <b>Did We Run Wiper Plugs?</b><br>Did We Run Top And Bottom Casing Wiper Plugs?  | Both |
| <b>Mixing Density of Job Stayed in Designed Density Range (0-100%)</b><br>Density Range defined as +/- .20 ppg. Calculation: Total BBLs cement mixed at designed density divided by total BBLs of cement multiplied by 100       | 99   |
| <b>Was Automated Density Control Used?</b><br>Was Automated Density Control (ADC) Used ?   | Yes  |
| <b>Pump Rate (percent) of Job Stayed At Designed Pump Rate</b><br>Pump Rate range defined as +/- 1bbl/min. Calculation: Total BBLs of fluid pumped at the designed rate divided by Total BBLs of fluid pumped, multiplied by 100 | 99   |
| <b>Nbr of Remedial Sqz Jobs Rqd - Competition</b><br>Number Of Remedial Squeeze Jobs Required After Primary Job Performed By Competition   | 0    |
| <b>Nbr of Remedial Plug Jobs Rqd - HES</b><br>Number Of Remedial Plug Jobs Needed After Primary Plug Pumped By HES   | 0    |
| <b>Nbr of Remedial Sqz Jobs Rqd - HES</b><br>Number Of Remedial Squeeze Jobs Required After Primary Job Performed By HES   | 0    |