



# CARRIZO

## CARRIZO OIL & GAS, INC.

Field: Niobrara CONZ'83  
Site: Castor 36-11-9-59 Pad  
Well: 3-36-11-9-59  
Wellpath: Original Hole

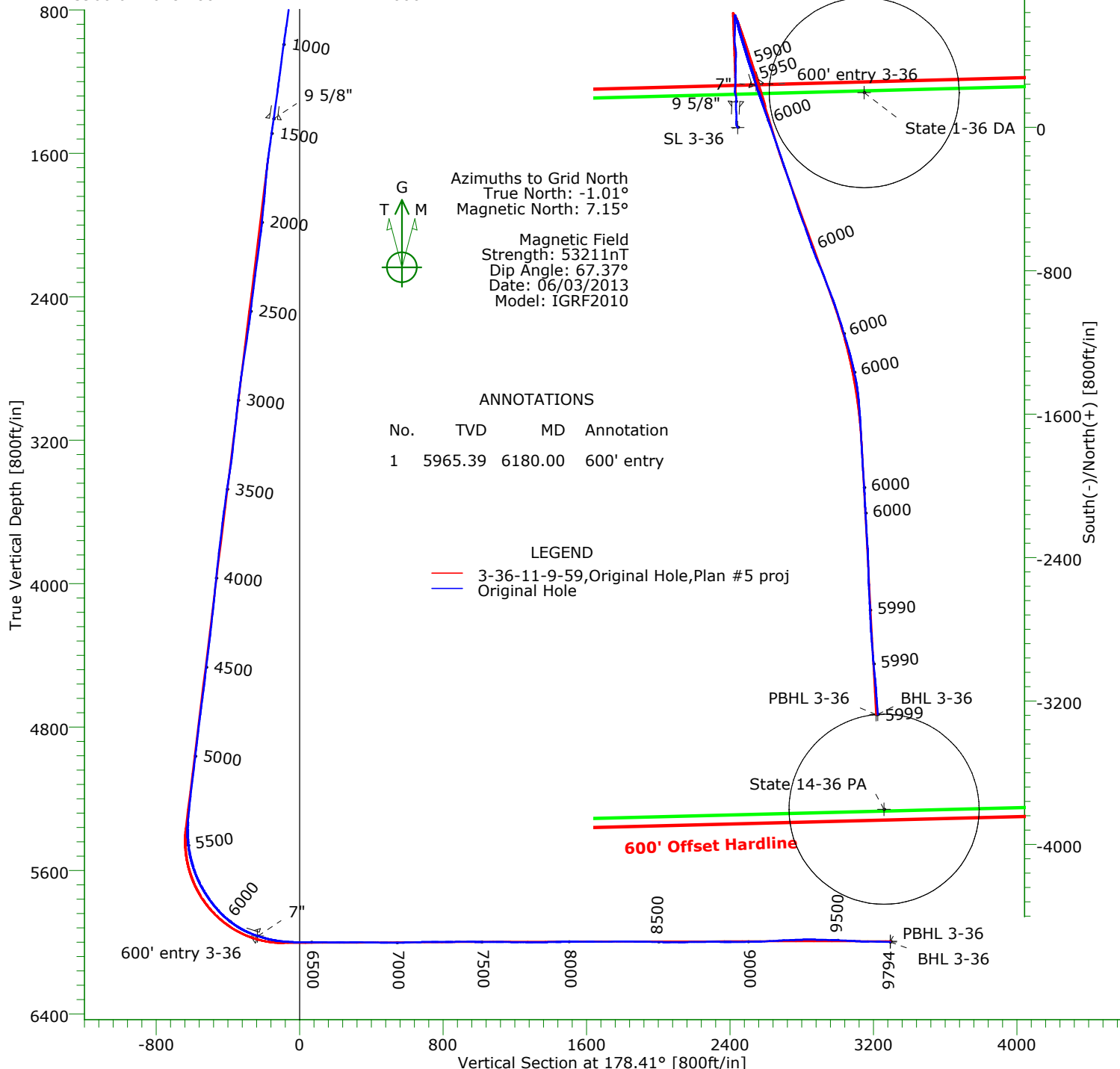


# Precision

Directional Services

### CASING DETAILS

No.	TVD	MD	Name	Size
1	1408.52	1418.00	9 5/8"	9.625
2	5966.62	6184.00	7"	7.000



Azimuths to Grid North  
True North: -1.01°  
Magnetic North: 7.15°  
  
Magnetic Field  
Strength: 53211nT  
Dip Angle: 67.37°  
Date: 06/03/2013  
Model: IGRF2010

### ANNOTATIONS

No.	TVD	MD	Annotation
1	5965.39	6180.00	600' entry

### LEGEND

— 3-36-11-9-59, Original Hole, Plan #5 proj  
— Original Hole

### TARGET DETAILS

Name	TVD	+N/-S	+E/-W	Northing	Easting	Latitude	Longitude	Shape
State 14-36 PA	-100.00	-3803.20	815.74	1502313.72	3435804.62	40°42'05.876N103°55'41.445W		Circle (Radius: 530)
State 1-36 DA	-100.00	193.85	704.87	1506310.77	3435693.75	40°42'45.385N103°55'41.964W		Circle (Radius: 530)
SL 3-36	0.00	0.00	0.00	1506116.92	3434988.88	40°42'43.593N103°55'51.161W		Point
600' entry 3-36	5965.39	237.94	101.81	1506354.86	3435090.69	40°42'45.926N103°55'49.784W		Point
PBHL 3-36	5995.00	-3275.09	771.08	1502841.83	3435759.96	40°42'11.101N103°55'41.903W		Point
BHL 3-36	5998.96	-3274.13	780.07	1502842.79	3435768.95	40°42'11.109N103°55'41.786W		Point

# Precision Directional Services, Inc.

## Survey Report

<b>Company:</b> CARRIZO OIL & GAS, INC.		<b>Date:</b> 06/12/2013	<b>Time:</b> 13:23:07	<b>Page:</b> 1
<b>Field:</b> Niobrara CONZ'83		<b>Co-ordinate(NE) Reference:</b> Well: 3-36-11-9-59, Grid North		
<b>Site:</b> Castor 36-11-9-59 Pad		<b>Vertical (TVD) Reference:</b> 4889'GL+17"KB 4906.0		
<b>Well:</b> 3-36-11-9-59		<b>Section (VS) Reference:</b> Well (0.00N,0.00E,178.41Azi)		
<b>Wellpath:</b> Original Hole		<b>Survey Calculation Method:</b> Minimum Curvature	<b>Db:</b> Adapti	

<b>Field:</b> Niobrara CONZ'83	
<b>Map System:</b> US State Plane Coordinate System 1983	<b>Map Zone:</b> Colorado, Northern Zone
<b>Geo Datum:</b> GRS 1980	<b>Coordinate System:</b> Well Centre
<b>Sys Datum:</b> Mean Sea Level	<b>Geomagnetic Model:</b> IGRF2010

<b>Site:</b> Castor 36-11-9-59 Pad S:36,T:9N,R:59W Weld County, CO	
<b>Site Position:</b>	<b>Northing:</b> 1506091.93 ft
<b>From:</b> Map	<b>Easting:</b> 3434989.54 ft
<b>Position Uncertainty:</b> 0.00 ft	<b>Latitude:</b> 40 42 43.346 N
<b>Ground Level:</b> 4889.00 ft	<b>Longitude:</b> 103 55 51.158 W
	<b>North Reference:</b> Grid
	<b>Grid Convergence:</b> 1.01 deg

<b>Well:</b> 3-36-11-9-59 835FNL 1270FWL		<b>Slot Name:</b> 3-36
<b>Well Position:</b> +N/-S 24.99 ft	<b>Northing:</b> 1506116.92 ft	<b>Latitude:</b> 40 42 43.593 N
+E/-W -0.66 ft	<b>Easting :</b> 3434988.88 ft	<b>Longitude:</b> 103 55 51.161 W
<b>Position Uncertainty:</b> 0.00 ft		

<b>Wellpath:</b> Original Hole		<b>Drilled From:</b> Surface
<b>Current Datum:</b> 4889'GL+17"KB	<b>Height</b> 4906.00 ft	<b>Tie-on Depth:</b> 0.00 ft
<b>Magnetic Data:</b> 06/03/2013		<b>Above System Datum:</b> Mean Sea Level
<b>Field Strength:</b> 53211 nT		<b>Declination:</b> 8.17 deg
<b>Vertical Section:</b> Depth From (TVD)	+N/-S	<b>Mag Dip Angle:</b> 67.37 deg
ft	ft	<b>Direction</b>
		deg
0.00	0.00	178.41

<b>Survey Program for Definitive Wellpath</b>			<b>Version:</b> 1
<b>Date:</b> 06/12/2013	<b>Validated:</b> No	<b>Toolcode</b>	<b>Tool Name</b>
<b>Actual From</b> ft	<b>To</b> ft	<b>Survey</b>	
143.00	9736.00	Survey #1 (143.00-9736.00)	MWD
9794.00	9794.00	Survey #2 (9794.00-9794.00)	Project
			Std MWD Projection

<b>Survey</b>										
MD ft	Incl deg	Azim deg	TVD ft	+N/-S ft	+E/-W ft	VS ft	DLS deg/100ft	Build deg/100ft	Turn deg/100ft	Tool/Comment
0.00	0.00	0.00	0.00	0.00	0.00	0.00	0.00	0.00	0.00	TIE LINE
143.00	0.40	187.50	143.00	-0.49	-0.07	0.49	0.28	0.28	0.00	MWD
236.00	2.60	328.30	235.97	0.98	-1.22	-1.01	3.14	2.37	151.40	MWD
329.00	3.60	329.50	328.83	5.29	-3.81	-5.39	1.08	1.08	1.29	MWD
425.00	4.80	338.30	424.57	11.62	-6.82	-11.80	1.42	1.25	9.17	MWD
519.00	6.30	357.80	518.14	20.43	-8.47	-20.65	2.54	1.60	20.74	MWD
613.00	8.20	4.00	611.38	32.27	-8.20	-32.48	2.18	2.02	6.60	MWD
706.00	8.40	5.70	703.41	45.64	-7.07	-45.82	0.34	0.22	1.83	MWD
800.00	8.40	356.80	796.41	59.33	-6.77	-59.50	1.38	0.00	-9.47	MWD
894.00	8.40	353.60	889.40	73.01	-7.92	-73.20	0.50	0.00	-3.40	MWD
988.00	7.90	357.30	982.45	86.29	-8.99	-86.50	0.77	-0.53	3.94	MWD
1081.00	7.70	358.00	1074.59	98.90	-9.51	-99.12	0.24	-0.22	0.75	MWD
1175.00	7.20	355.60	1167.80	111.06	-10.18	-111.30	0.63	-0.53	-2.55	MWD
1269.00	8.00	1.90	1260.97	123.48	-10.41	-123.72	1.23	0.85	6.70	MWD
1362.00	8.00	2.90	1353.07	136.41	-9.87	-136.63	0.15	0.00	1.08	MWD
1449.00	7.90	2.40	1439.23	148.43	-9.31	-148.63	0.14	-0.11	-0.57	MWD
1543.00	8.10	359.80	1532.31	161.50	-9.07	-161.69	0.44	0.21	-2.77	MWD
1636.00	7.60	350.30	1624.45	174.12	-10.12	-174.33	1.49	-0.54	-10.22	MWD
1730.00	5.70	342.90	1717.81	184.71	-12.55	-184.98	2.21	-2.02	-7.87	MWD
1815.00	4.90	336.90	1802.45	192.08	-15.21	-192.43	1.14	-0.94	-7.06	MWD
1901.00	5.60	2.80	1888.10	199.65	-16.45	-200.03	2.85	0.81	30.12	MWD
1986.00	5.50	4.70	1972.70	207.85	-15.91	-208.22	0.25	-0.12	2.24	MWD

# Precision Directional Services, Inc.

## Survey Report

**Company:** CARRIZO OIL & GAS, INC.  
**Field:** Niobrara CONZ'83  
**Site:** Castor 36-11-9-59 Pad  
**Well:** 3-36-11-9-59  
**Wellpath:** Original Hole

**Date:** 06/12/2013 **Time:** 13:23:07 **Page:** 2  
**Co-ordinate(NE) Reference:** Well: 3-36-11-9-59, Grid North  
**Vertical (TVD) Reference:** 4889'GL+17"KB 4906.0  
**Section (VS) Reference:** Well (0.00N,0.00E,178.41Azi)  
**Survey Calculation Method:** Minimum Curvature **Db:** Adapti

### Survey

MD ft	Incl deg	Azim deg	TVD ft	+N/-S ft	+E/-W ft	VS ft	DLS deg/100ft	Build deg/100ft	Turn deg/100ft	Tool/Comment
2072.00	7.40	3.60	2058.15	217.49	-15.22	-217.83	2.21	2.21	-1.28	MWD
2157.00	7.70	3.60	2142.42	228.64	-14.52	-228.95	0.35	0.35	0.00	MWD
2242.00	7.80	4.30	2226.64	240.07	-13.73	-240.36	0.16	0.12	0.82	MWD
2328.00	7.40	1.50	2311.88	251.43	-13.15	-251.69	0.63	-0.47	-3.26	MWD
2413.00	7.10	0.60	2396.20	262.15	-12.95	-262.41	0.38	-0.35	-1.06	MWD
2499.00	6.60	359.90	2481.59	272.41	-12.91	-272.66	0.59	-0.58	-0.81	MWD
2584.00	8.10	1.30	2565.89	283.28	-12.78	-283.53	1.78	1.76	1.65	MWD
2669.00	8.50	2.10	2650.00	295.55	-12.41	-295.78	0.49	0.47	0.94	MWD
2755.00	8.50	2.40	2735.05	308.25	-11.91	-308.46	0.05	0.00	0.35	MWD
2840.00	8.50	4.00	2819.12	320.79	-11.21	-320.98	0.28	0.00	1.88	MWD
2925.00	7.40	357.80	2903.30	332.53	-10.98	-332.70	1.64	-1.29	-7.29	MWD
3010.00	6.80	357.10	2987.65	343.02	-11.45	-343.21	0.71	-0.71	-0.82	MWD
3095.00	5.90	354.50	3072.13	352.40	-12.12	-352.60	1.11	-1.06	-3.06	MWD
3181.00	6.60	4.00	3157.62	361.73	-12.20	-361.93	1.45	0.81	11.05	MWD
3265.00	6.20	2.80	3241.10	371.07	-11.64	-371.25	0.50	-0.48	-1.43	MWD
3351.00	7.90	4.70	3326.44	381.60	-10.93	-381.76	1.99	1.98	2.21	MWD
3436.00	9.10	5.20	3410.51	394.12	-9.84	-394.24	1.41	1.41	0.59	MWD
3521.00	7.90	358.00	3494.58	406.65	-9.44	-406.76	1.88	-1.41	-8.47	MWD
3606.00	8.00	355.20	3578.76	418.38	-10.14	-418.50	0.47	0.12	-3.29	MWD
3691.00	6.90	352.40	3663.04	429.34	-11.31	-429.49	1.36	-1.29	-3.29	MWD
3776.00	6.80	351.70	3747.43	439.38	-12.71	-439.56	0.15	-0.12	-0.82	MWD
3861.00	6.50	352.00	3831.86	449.12	-14.10	-449.34	0.36	-0.35	0.35	MWD
3947.00	6.20	350.30	3917.33	458.52	-15.56	-458.78	0.41	-0.35	-1.98	MWD
4032.00	6.00	352.40	4001.85	467.45	-16.93	-467.74	0.35	-0.24	2.47	MWD
4117.00	5.50	352.40	4086.42	475.89	-18.05	-476.21	0.59	-0.59	0.00	MWD
4202.00	6.70	1.50	4170.94	484.89	-18.46	-485.21	1.81	1.41	10.71	MWD
4288.00	6.20	3.60	4256.40	494.54	-18.04	-494.85	0.64	-0.58	2.44	MWD
4373.00	7.70	1.50	4340.77	504.81	-17.60	-505.10	1.79	1.76	-2.47	MWD
4458.00	6.90	1.50	4425.08	515.61	-17.32	-515.89	0.94	-0.94	0.00	MWD
4543.00	6.00	2.40	4509.54	525.15	-17.00	-525.42	1.07	-1.06	1.06	MWD
4629.00	7.70	1.90	4594.93	535.40	-16.62	-535.65	1.98	1.98	-0.58	MWD
4714.00	7.40	8.60	4679.19	546.50	-15.61	-546.73	1.09	-0.35	7.88	MWD
4799.00	7.50	357.70	4763.48	557.46	-15.02	-557.66	1.66	0.12	-12.82	MWD
4885.00	6.20	0.50	4848.86	567.71	-15.20	-567.91	1.56	-1.51	3.26	MWD
4970.00	7.20	355.70	4933.28	577.61	-15.56	-577.82	1.35	1.18	-5.65	MWD
5055.00	6.40	358.40	5017.68	587.66	-16.09	-587.88	1.01	-0.94	3.18	MWD
5140.00	7.10	357.10	5102.09	597.64	-16.49	-597.87	0.84	0.82	-1.53	MWD
5226.00	6.40	359.90	5187.50	607.74	-16.77	-607.97	0.90	-0.81	3.26	MWD
5311.00	5.70	4.30	5272.02	616.69	-16.46	-616.91	0.99	-0.82	5.18	MWD
5368.00	5.10	4.00	5328.77	622.04	-16.07	-622.25	1.05	-1.05	-0.53	MWD
5410.00	1.80	23.10	5370.69	624.51	-15.68	-624.70	8.21	-7.86	45.48	MWD
5453.00	2.90	152.90	5413.67	624.16	-14.92	-624.34	9.96	2.56	301.86	MWD
5496.00	6.80	162.40	5456.51	620.77	-13.65	-620.91	9.23	9.07	22.09	MWD
5538.00	10.30	162.50	5498.04	614.81	-11.77	-614.90	8.33	8.33	0.24	MWD
5581.00	14.40	163.60	5540.03	606.01	-9.11	-606.03	9.55	9.53	2.56	MWD
5623.00	18.20	164.50	5580.34	594.68	-5.88	-594.61	9.07	9.05	2.14	MWD
5666.00	21.80	165.90	5620.74	580.46	-2.14	-580.30	8.45	8.37	3.26	MWD
5709.00	25.50	167.10	5660.12	563.69	1.88	-563.42	8.68	8.60	2.79	MWD
5751.00	29.70	166.20	5697.33	544.76	6.38	-544.38	10.05	10.00	-2.14	MWD
5794.00	33.60	163.60	5733.93	522.99	12.28	-522.45	9.61	9.07	-6.05	MWD
5837.00	37.00	163.20	5769.02	499.19	19.38	-498.46	7.93	7.91	-0.93	MWD
5879.00	40.70	163.40	5801.72	473.96	26.95	-473.03	8.81	8.81	0.48	MWD
5922.00	44.80	162.50	5833.29	446.06	35.52	-444.90	9.64	9.53	-2.09	MWD

# Precision Directional Services, Inc.

## Survey Report

<b>Company:</b> CARRIZO OIL & GAS, INC. <b>Field:</b> Niobrara CONZ'83 <b>Site:</b> Castor 36-11-9-59 Pad <b>Well:</b> 3-36-11-9-59 <b>Wellpath:</b> Original Hole	<b>Date:</b> 06/12/2013 <b>Time:</b> 13:23:07 <b>Page:</b> 3 <b>Co-ordinate(NE) Reference:</b> Well: 3-36-11-9-59, Grid North <b>Vertical (TVD) Reference:</b> 4889'GL+17"KB 4906.0 <b>Section (VS) Reference:</b> Well (0.00N,0.00E,178.41Azi) <b>Survey Calculation Method:</b> Minimum Curvature <b>Db:</b> Adapti
--	---

### Survey

MD ft	Incl deg	Azim deg	TVD ft	+N/-S ft	+E/-W ft	VS ft	DLS deg/100ft	Build deg/100ft	Turn deg/100ft	Tool/Comment
5964.00	49.20	163.60	5861.93	416.68	44.46	-415.29	10.65	10.48	2.62	MWD
6007.00	53.80	162.70	5888.69	384.49	54.22	-382.83	10.82	10.70	-2.09	MWD
6050.00	57.80	161.80	5912.86	350.62	65.06	-348.68	9.46	9.30	-2.09	MWD
6092.00	63.90	161.50	5933.31	315.83	76.61	-313.58	14.54	14.52	-0.71	MWD
6134.00	69.10	162.20	5950.05	279.24	88.60	-276.67	12.47	12.38	1.67	MWD
6180.00	71.93	162.31	5965.39	237.94	101.81	-235.02	6.17	6.16	0.24	600' entry
6220.00	74.40	162.40	5976.97	201.46	113.42	-198.23	6.17	6.16	0.23	MWD
6263.00	78.70	160.60	5986.97	161.81	126.69	-158.23	10.80	10.00	-4.19	MWD
6305.00	83.60	160.30	5993.43	122.71	140.57	-118.77	11.69	11.67	-0.71	MWD
6348.00	85.80	160.60	5997.40	82.37	154.90	-78.04	5.16	5.12	0.70	MWD
6391.00	87.60	160.10	5999.88	41.94	169.34	-37.23	4.34	4.19	-1.16	MWD
6434.00	90.00	161.00	6000.78	1.41	183.65	3.69	5.96	5.58	2.09	MWD
6476.00	90.30	161.10	6000.67	-38.31	197.29	43.77	0.75	0.71	0.24	MWD
6519.00	89.90	160.30	6000.59	-78.90	211.50	84.74	2.08	-0.93	-1.86	MWD
6562.00	89.30	161.30	6000.89	-119.50	225.64	125.72	2.71	-1.40	2.33	MWD
6603.00	88.80	161.10	6001.57	-158.31	238.85	164.88	1.31	-1.22	-0.49	MWD
6646.00	89.50	161.30	6002.21	-199.01	252.71	205.95	1.69	1.63	0.47	MWD
6689.00	91.20	160.80	6001.95	-239.68	266.67	246.99	4.12	3.95	-1.16	MWD
6731.00	90.80	161.30	6001.21	-279.40	280.31	287.07	1.52	-0.95	1.19	MWD
6774.00	89.50	162.00	6001.10	-320.21	293.85	328.24	3.43	-3.02	1.63	MWD
6817.00	89.30	162.00	6001.55	-361.10	307.13	369.49	0.47	-0.47	0.00	MWD
6859.00	89.00	161.50	6002.17	-400.99	320.28	409.72	1.39	-0.71	-1.19	MWD
6902.00	89.10	161.30	6002.89	-441.73	334.00	450.83	0.52	0.23	-0.47	MWD
6945.00	90.40	160.10	6003.08	-482.32	348.21	491.79	4.11	3.02	-2.79	MWD
6987.00	89.80	159.90	6003.00	-521.78	362.57	531.64	1.51	-1.43	-0.48	MWD
7030.00	90.60	159.90	6002.85	-562.16	377.35	572.42	1.86	1.86	0.00	MWD
7073.00	91.70	161.10	6001.99	-602.69	391.70	613.32	3.79	2.56	2.79	MWD
7115.00	91.70	160.30	6000.74	-642.31	405.58	653.31	1.90	0.00	-1.90	MWD
7158.00	91.30	159.20	5999.62	-682.64	420.45	694.04	2.72	-0.93	-2.56	MWD
7201.00	90.60	158.50	5998.90	-722.73	435.97	734.55	2.30	-1.63	-1.63	MWD
7243.00	89.90	156.40	5998.72	-761.52	452.07	773.77	5.27	-1.67	-5.00	MWD
7286.00	89.60	157.30	5998.91	-801.06	468.98	813.76	2.21	-0.70	2.09	MWD
7329.00	90.70	159.70	5998.80	-841.06	484.74	854.19	6.14	2.56	5.58	MWD
7371.00	90.10	159.40	5998.50	-880.41	499.41	893.93	1.60	-1.43	-0.71	MWD
7414.00	90.10	158.80	5998.43	-920.58	514.75	934.51	1.40	0.00	-1.40	MWD
7457.00	89.30	159.20	5998.65	-960.73	530.16	975.07	2.08	-1.86	0.93	MWD
7499.00	90.30	161.80	5998.80	-1000.31	544.18	1015.03	6.63	2.38	6.19	MWD
7542.00	89.90	162.00	5998.72	-1041.18	557.54	1056.25	1.04	-0.93	0.47	MWD
7585.00	89.20	161.70	5999.06	-1082.04	570.93	1097.47	1.77	-1.63	-0.70	MWD
7627.00	89.30	163.20	5999.61	-1122.08	583.59	1137.85	3.58	0.24	3.57	MWD
7670.00	89.10	163.10	6000.21	-1163.23	596.06	1179.33	0.52	-0.47	-0.23	MWD
7712.00	89.80	163.80	6000.62	-1203.49	608.02	1219.90	2.36	1.67	1.67	MWD
7755.00	89.50	163.80	6000.88	-1244.78	620.02	1261.51	0.70	-0.70	0.00	MWD
7798.00	89.90	166.20	6001.10	-1286.31	631.14	1303.33	5.66	0.93	5.58	MWD
7840.00	91.10	166.40	6000.74	-1327.12	641.09	1344.39	2.90	2.86	0.48	MWD
7883.00	91.00	168.50	5999.95	-1369.08	650.43	1386.60	4.89	-0.23	4.88	MWD
7926.00	90.80	169.00	5999.27	-1411.25	658.82	1428.99	1.25	-0.47	1.16	MWD
7968.00	91.50	172.00	5998.43	-1452.66	665.75	1470.57	7.33	1.67	7.14	MWD
8011.00	90.20	173.30	5997.79	-1495.30	671.25	1513.35	4.28	-3.02	3.02	MWD
8054.00	89.20	175.50	5998.02	-1538.09	675.45	1556.24	5.62	-2.33	5.12	MWD
8096.00	89.40	175.40	5998.53	-1579.96	678.78	1598.18	0.53	0.48	-0.24	MWD
8139.00	90.60	175.70	5998.53	-1622.82	682.11	1641.13	2.88	2.79	0.70	MWD
8181.00	90.60	177.00	5998.09	-1664.74	684.79	1683.10	3.10	0.00	3.10	MWD
8224.00	90.70	177.00	5997.60	-1707.67	687.04	1726.08	0.23	0.23	0.00	MWD

# Precision Directional Services, Inc.

## Survey Report

<b>Company:</b> CARRIZO OIL & GAS, INC. <b>Field:</b> Niobrara CONZ'83 <b>Site:</b> Castor 36-11-9-59 Pad <b>Well:</b> 3-36-11-9-59 <b>Wellpath:</b> Original Hole	<b>Date:</b> 06/12/2013 <b>Time:</b> 13:23:07 <b>Page:</b> 4 <b>Co-ordinate(NE) Reference:</b> Well: 3-36-11-9-59, Grid North <b>Vertical (TVD) Reference:</b> 4889'GL+17"KB 4906.0 <b>Section (VS) Reference:</b> Well (0.00N,0.00E,178.41Azi) <b>Survey Calculation Method:</b> Minimum Curvature <b>Db:</b> Adapti
--	---

### Survey

MD ft	Incl deg	Azim deg	TVD ft	+N/-S ft	+E/-W ft	VS ft	DLS deg/100ft	Build deg/100ft	Turn deg/100ft	Tool/Comment
8267.00	90.40	177.00	5997.19	-1750.61	689.29	1769.07	0.70	-0.70	0.00	MWD
8310.00	90.00	176.60	5997.04	-1793.55	691.69	1812.05	1.32	-0.93	-0.93	MWD
8352.00	89.50	177.10	5997.22	-1835.48	694.00	1854.03	1.68	-1.19	1.19	MWD
8394.00	89.40	176.60	5997.63	-1877.42	696.30	1896.01	1.21	-0.24	-1.19	MWD
8437.00	89.10	176.10	5998.19	-1920.33	699.04	1938.98	1.36	-0.70	-1.16	MWD
8480.00	88.80	176.10	5998.98	-1963.22	701.96	1981.94	0.70	-0.70	0.00	MWD
8523.00	88.60	176.10	5999.95	-2006.11	704.89	2024.89	0.47	-0.47	0.00	MWD
8565.00	90.00	177.30	6000.47	-2048.03	707.31	2066.87	4.39	3.33	2.86	MWD
8608.00	89.50	177.30	6000.65	-2090.99	709.33	2109.86	1.16	-1.16	0.00	MWD
8650.00	91.30	177.00	6000.36	-2132.93	711.42	2151.85	4.34	4.29	-0.71	MWD
8693.00	91.00	176.80	5999.50	-2175.86	713.74	2194.83	0.84	-0.70	-0.47	MWD
8736.00	90.60	177.00	5998.90	-2218.79	716.07	2237.81	1.04	-0.93	0.47	MWD
8779.00	90.30	176.60	5998.56	-2261.72	718.47	2280.79	1.16	-0.70	-0.93	MWD
8821.00	89.80	176.40	5998.52	-2303.64	721.03	2322.76	1.28	-1.19	-0.48	MWD
8864.00	89.00	175.70	5998.97	-2346.54	724.00	2365.72	2.47	-1.86	-1.63	MWD
8907.00	90.10	178.70	5999.31	-2389.48	726.10	2408.71	7.43	2.56	6.98	MWD
8949.00	90.70	178.20	5999.02	-2431.46	727.23	2450.71	1.86	1.43	-1.19	MWD
8992.00	90.40	178.50	5998.60	-2474.44	728.47	2493.70	0.99	-0.70	0.70	MWD
9035.00	90.70	178.20	5998.19	-2517.42	729.71	2536.70	0.99	0.70	-0.70	MWD
9077.00	92.90	177.50	5996.87	-2559.37	731.28	2578.68	5.50	5.24	-1.67	MWD
9120.00	93.10	177.30	5994.62	-2602.27	733.23	2621.61	0.66	0.47	-0.47	MWD
9163.00	93.30	177.30	5992.22	-2645.15	735.25	2664.54	0.47	0.47	0.00	MWD
9205.00	92.20	177.50	5990.21	-2687.06	737.16	2706.48	2.66	-2.62	0.48	MWD
9248.00	92.50	177.00	5988.44	-2729.98	739.22	2749.44	1.36	0.70	-1.16	MWD
9291.00	91.40	177.30	5986.98	-2772.90	741.35	2792.40	2.65	-2.56	0.70	MWD
9333.00	90.40	175.70	5986.32	-2814.81	743.92	2834.37	4.49	-2.38	-3.81	MWD
9376.00	88.90	176.40	5986.58	-2857.71	746.88	2877.33	3.85	-3.49	1.63	MWD
9419.00	88.80	175.50	5987.45	-2900.59	749.92	2920.28	2.11	-0.23	-2.09	MWD
9462.00	89.00	175.40	5988.27	-2943.45	753.33	2963.22	0.52	0.47	-0.23	MWD
9504.00	87.20	174.80	5989.66	-2985.27	756.91	3005.12	4.52	-4.29	-1.43	MWD
9547.00	87.00	174.80	5991.84	-3028.04	760.80	3047.98	0.47	-0.47	0.00	MWD
9590.00	86.80	174.10	5994.17	-3070.77	764.96	3090.82	1.69	-0.47	-1.63	MWD
9632.00	87.90	175.40	5996.11	-3112.55	768.80	3132.68	4.05	2.62	3.10	MWD
9675.00	89.30	176.60	5997.16	-3155.43	771.79	3175.63	4.29	3.26	2.79	MWD
9718.00	89.30	175.40	5997.68	-3198.32	774.79	3218.59	2.79	0.00	-2.79	MWD
9736.00	89.00	176.10	5997.95	-3216.27	776.13	3236.57	4.23	-1.67	3.89	MWD
9794.00	89.00	176.10	5998.96	-3274.13	780.07	3294.51	0.00	0.00	0.00	Project

### Annotation

MD ft	TVD ft	
6180.00	5965.39	600' entry