

PROPOSED LOCATION:
ANSCHUTZ EQUUS FARMS 4-62-20_21
NWNW PAD #4-62-20-1609B2, 1609C2,
0108B2B, 0108D2B, 0164BB, 0164DB &
0108C2B

LEGEND:

 **PROPOSED LOCATION**



BILL BARRETT CORPORATION

ANSCHUTZ EQUUS FARMS 4-62-20_21 NWNW PAD
#4-62-20-1609B2, 1609C2, 0108B2B, 0108D2B, 0164BB,
0164DB & 0108C2B
NW 1/4 NW 1/4, SECTION 20, T4N, R62W, 6th P.M.
WELD COUNTY, COLORADO

DRAWN BY: J.L.G.

DATE DRAWN: 10-14-14

SCALE: 1:100,000

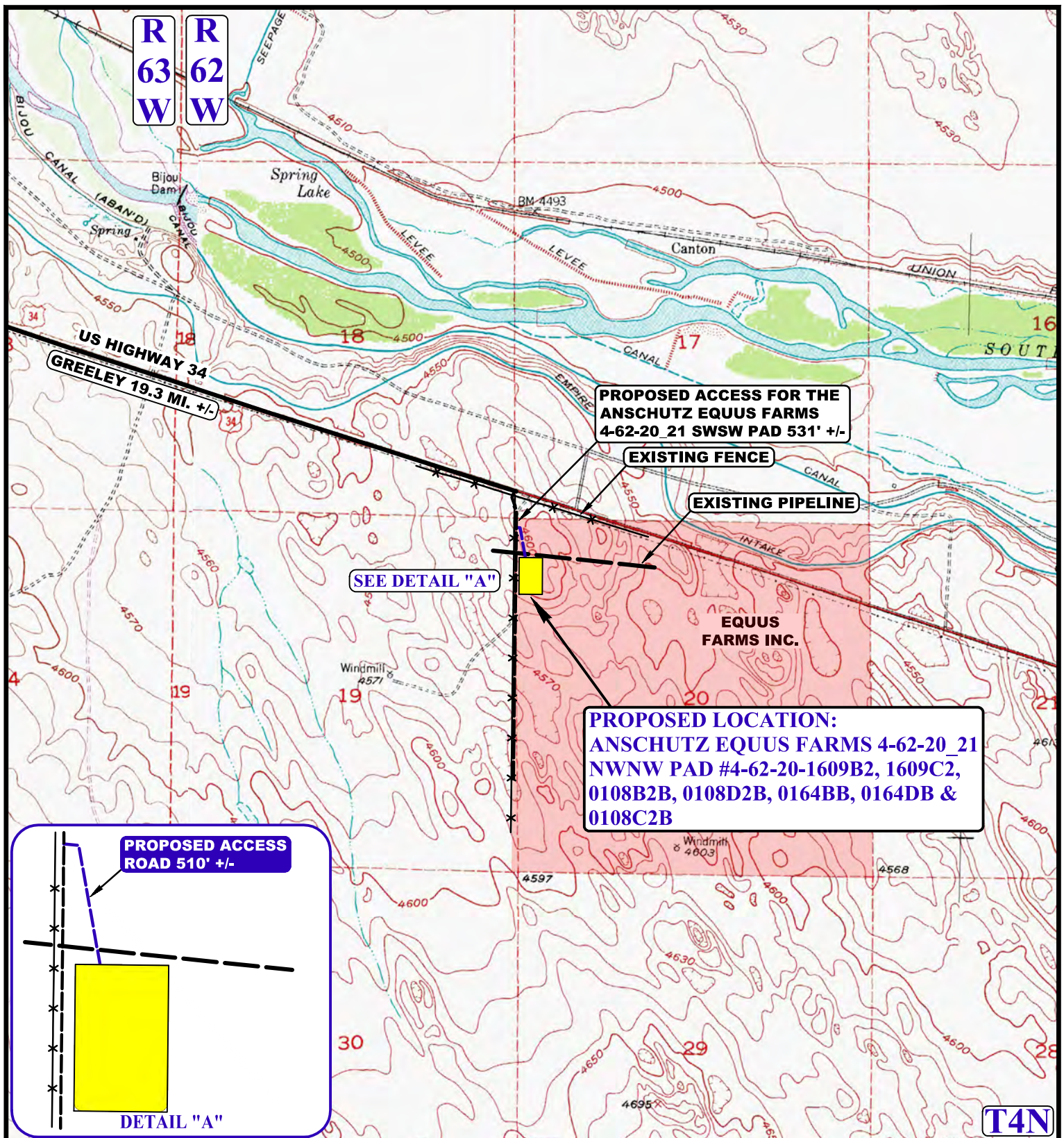
REV: 08-17-15 C.C.

ACCESS ROAD MAP

TOPO A



UELS, LLC
 Corporate Office * 85 South 200 East
 Vernal, UT 84078 * (435) 789-1017



NOTE: PARCEL DATA SHOWN HAS BEEN OBTAINED FROM VARIOUS SOURCES AND SHOULD BE USED FOR MAPPING, GRAPHIC AND PLANNING PURPOSES ONLY. NO WARRANTY IS MADE BY UINTAH ENGINEERING AND LAND SURVEYING (UELS) FOR ACCURACY OF THE PARCEL DATA.

LEGEND:

- EXISTING ROAD
- - - PROPOSED ROAD
- x - x - EXISTING FENCE
- - - EXISTING PIPELINE

BILL BARRETT CORPORATION

ANSCHUTZ EQUUS FARMS 4-62-20 21 NWNW PAD
#4-62-20-1609B2, 1609C2, 0108B2B, 0108D2B, 0164BB,
0164DB & 0108C2B
NW 1/4 NW 1/4, SECTION 20, T4N, R62W, 6th P.M.
WELD COUNTY, COLORADO

DRAWN BY: J.L.G.

DATE DRAWN: 10-14-14

SCALE: 1"=2000'

REV: 08-17-15 C.C.

ACCESS ROAD MAP

TOPO B



UELS, LLC
Corporate Office * 85 South 200 East
Vernal, UT 84078 * (435) 789-1017

PROCEED IN AN EASTERLY, THEN SOUTHEASTERLY DIRECTION FROM GREELEY, COLORADO ALONG U.S. HIGHWAY 34 APPROXIMATELY 19.3 MILES TO THE BEGINNING OF THE PROPOSED ACCESS ROAD FOR THE ANSCHUTZ EQUUS FARMS 4-62-20_21 SWSW TO THE SOUTH; FOLLOW ROAD FLAGS IN A SOUTHERLY DIRECTION APPROXIMATELY 531' TO THE BEGINNING OF THE PROPOSED ACCESS ROAD TO THE SOUTHEAST; FOLLOW ROAD FLAGS IN A SOUTHEASTERLY DIRECTION APPROXIMATELY 510' TO THE PROPOSED LOCATION.

TOTAL DISTANCE FROM GREELEY, COLORADO TO THE PROPOSED LOCATION IS APPROXIMATELY 19.5 MILES.

BILL BARRETT CORPORATION

ANSCHUTZ EQUUS FARMS 4-62-20 21 NWNW PAD
#4-62-20-1609B2, 1609C2, 0108B2B, 0108D2B, 0164BB,
0164DB & 0108C2B

NW 1/4 NW 1/4, SECTION 20, T4N, R62W, 6th P.M.
WELD COUNTY, COLORADO



UELS, LLC
Corporate Office * 85 South 200 East
Vernal, UT 84078 * (435) 789-1017

DRAWN BY: J.L.G.

DATE DRAWN: 10-14-14

REV: 08-17-15 C.C.

ROAD DESCRIPTION