

LEGEND:

 **PROPOSED LOCATION**



BILL BARRETT CORPORATION

ANSCHUTZ EQUUS FARMS 4-62-20_21 SWNW PAD
#4-62-20-3225B2, 3225C2, 1724B2, 1724D2 & 1724C2
SW 1/4 NW 1/4, SECTION 20, T4N, R62W, 6th P.M.
WELD COUNTY, COLORADO

DRAWN BY: J.L.G.

DATE DRAWN: 10-20-14

SCALE: 1:100,000

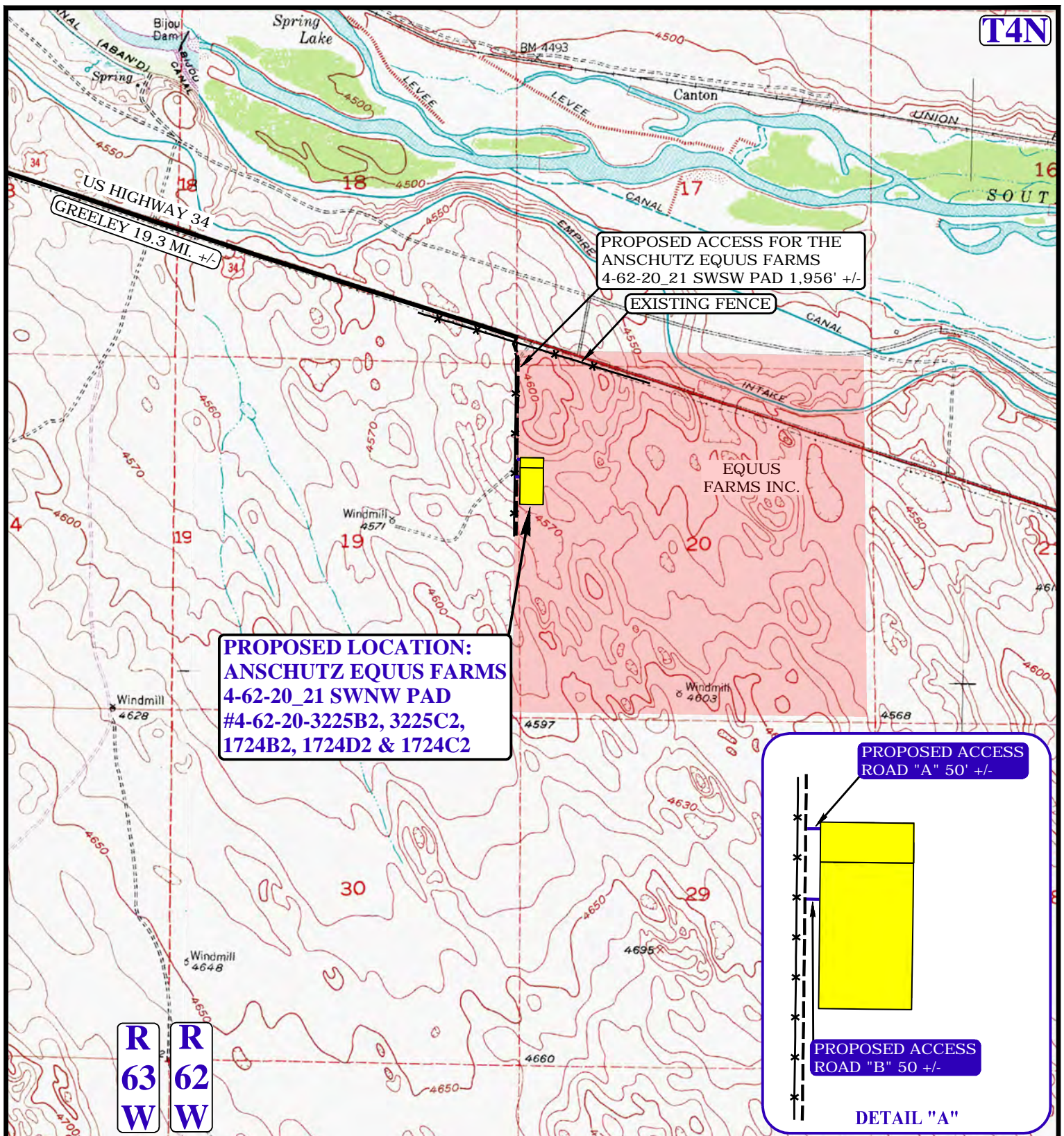
REV: 06-23-15

ACCESS ROAD MAP

TOPO A



UELS, LLC
 Corporate Office * 85 South 200 East
 Vernal, UT 84078 * (435) 789-1017



NOTE: PARCEL DATA SHOWN HAS BEEN OBTAINED FROM VARIOUS SOURCES AND SHOULD BE USED FOR MAPPING, GRAPHIC AND PLANNING PURPOSES ONLY. NO WARRANTY IS MADE BY UINTAH ENGINEERING AND LAND SURVEYING (UELS) FOR ACCURACY OF THE PARCEL DATA.

LEGEND:

- EXISTING ROAD
- - - PROPOSED ROAD
- x - x - EXISTING FENCE

BILL BARRETT CORPORATION

ANSCHUTZ EQUUS FARMS 4-62-20_21 SWNW PAD
#4-62-20-3225B2, 3225C2, 1724B2, 1724D2 & 1724C2
SW 1/4 NW 1/4, SECTION 20, T4N, R62W, 6th P.M.
WELD COUNTY, COLORADO

DRAWN BY: J.L.G.

DATE DRAWN: 10-20-14

SCALE: 1"=2000'

REV: 06-23-15

ACCESS ROAD MAP

TOPO B



UELS, LLC
Corporate Office * 85 South 200 East
Vernal, UT 84078 * (435) 789-1017



PROCEED IN AN EASTERLY, THEN SOUTHEASTERLY DIRECTION FROM GREELEY, COLORADO ALONG U.S. HIGHWAY 34 APPROXIMATELY 19.3 MILES TO THE BEGINNING OF THE PROPOSED ACCESS ROAD FOR THE ANSCHUTZ EQUUS FARMS 4-62-20_21 SWSW PAD TO THE SOUTH; FOLLOW ROAD FLAGS IN A SOUTHERLY DIRECTION APPROXIMATELY 1,956' TO THE BEGINNING OF THE PROPOSED ACCESS ROAD TO THE EAST; FOLLOW ROAD FLAGS IN AN EASTERLY DIRECTION APPROXIMATELY 50' TO THE PROPOSED LOCATION.

TOTAL DISTANCE FROM GREELEY, COLORADO TO THE PROPOSED LOCATION IS APPROXIMATELY 19.7 MILES.

BILL BARRETT CORPORATION

ANSCHUTZ EQUUS FARMS 4-62-20_21 SWNW PAD
#4-62-20-3225B2, 3225C2, 1724B2, 1724D2 & 1724C2
SW 1/4 NW 1/4, SECTION 20, T4N, R62W, 6th P.M.
WELD COUNTY, COLORADO



UELS, LLC
Corporate Office * 85 South 200 East
Vernal, UT 84078 * (435) 789-1017

DRAWN BY: J.L.G.	DATE DRAWN: 10-20-14
	REV: 06-23-15
ROAD DESCRIPTION	