

WPX Energy Rocky Mountain LLC- EBUS

RWF 43-23

Nabors 577

Post Job Summary

Cement Surface Casing

Date Prepared: 01/24/2015
Job Date: 01/17/2015

Submitted by: Evan Russell – Grand Junction Cement Engineer

The Road to Excellence Starts with Safety

Sold To #: 300721	Ship To #: 3122906	Quote #:	Sales Order #: 0902042727
Customer: WPX ENERGY ROCKY MOUNTAIN LLC-EBUS		Customer Rep: LUKE HUBBARD	
Well Name: MEAD -RWF-		Well #: 43-23	API/UWI #: 05-045-20050-00
Field: RULISON	City (SAP): RIFLE	County/Parish: GARFIELD	State: COLORADO
Legal Description: NE SE-23-6S-94W-2293FSL-211FEL			
Contractor: NABORS DRLG		Rig/Platform Name/Num: NABORS 577	
Job BOM: 7521			
Well Type: DIRECTIONAL GAS			
Sales Person: HALAMERICA\HB50180		Srvc Supervisor: Bill Jamison	

Job

CIRCULATED 20 BBLS OF CEMENT TO SURFACE

Formation Name			
Formation Depth (MD)	Top		Bottom
Form Type	BHST		
Job depth MD	1128ft		Job Depth TVD
Water Depth			Wk Ht Above Floor 5
Perforation Depth (MD)	From		To

Well Data

Description	New / Used	Size in	ID in	Weight lbm/ft	Thread	Grade	Top MD ft	Bottom MD ft	Top TVD ft	Bottom TVD ft
Casing		9.625	9.001	32.3			0	1128		
Open Hole Section			13.5				0	1138		

Tools and Accessories

Type	Size in	Qty	Make	Depth ft	Type	Size in	Qty	Make
Guide Shoe	9.625	1		1128	Top Plug	9.625	1	HES
Float Shoe					Bottom Plug			
Float Collar	9.625	1		1082	SSR plug set			
Insert Float					Plug Container	9.625	1	HES
Stage Tool					Centralizers			

Miscellaneous Materials

Gelling Agt	Conc	Surfactant	Conc	Acid Type	Qty	Conc
Treatment Fld	Conc	Inhibitor	Conc	Sand Type	Size	Qty

Fluid Data

Stage/Plug #: 1

Fluid #	Stage Type	Fluid Name	Qty	Qty UoM	Mixing Density lbm/gal	Yield ft3/sack	Mix Fluid Gal	Rate bbl/min	Total Mix Fluid Gal
1	Fresh Water	Fresh Water	20	bbl	8.4			6	

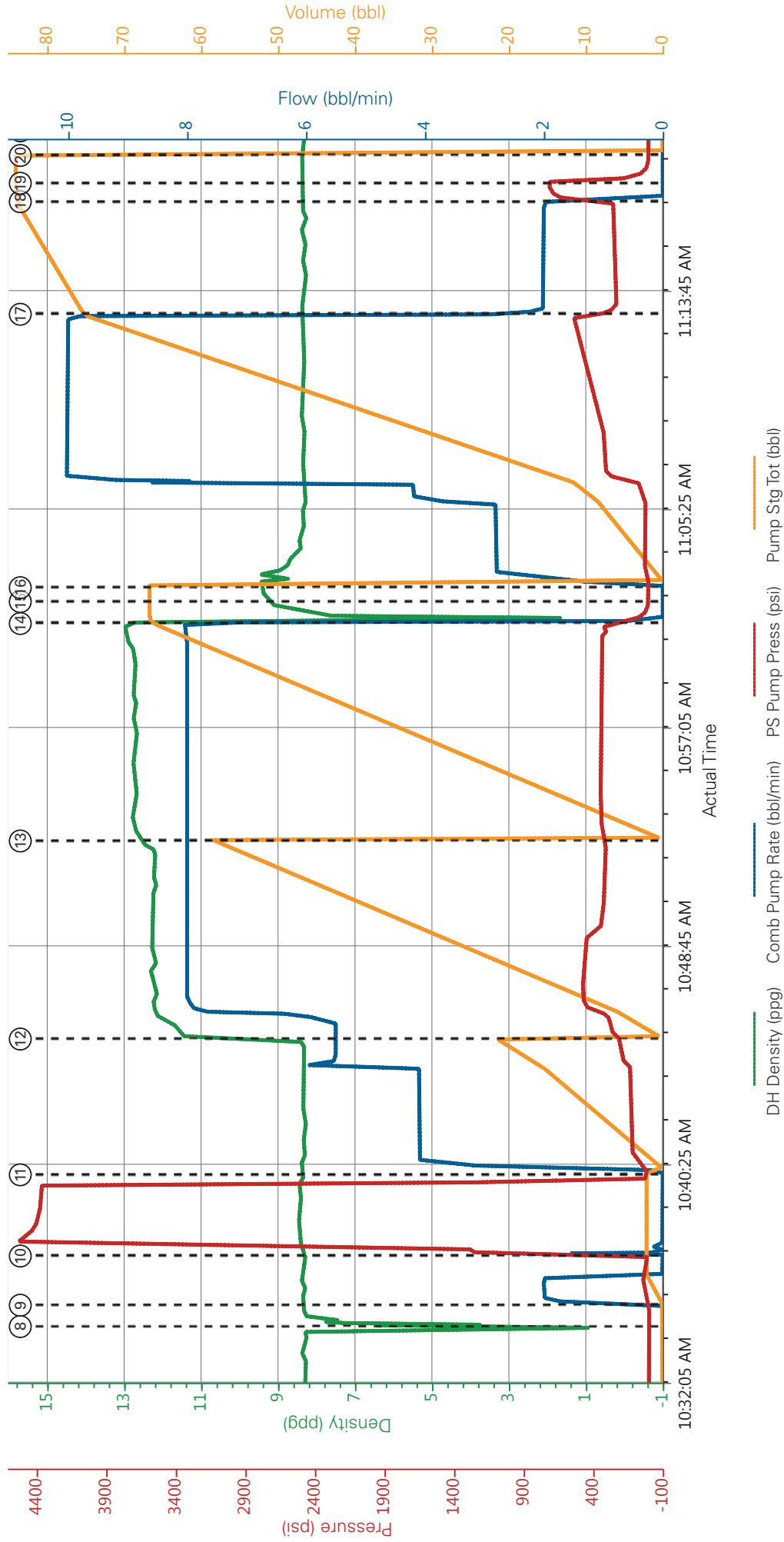
Fluid #	Stage Type	Fluid Name	Qty	Qty UoM	Mixing Density lbm/gal	Yield ft3/sack	Mix Fluid Gal	Rate bbl/min	Total Mix Fluid Gal
2	VariCem GJ1	VARICEM (TM) CEMENT	140	sack	12.3	2.38		8	13.77
13.70 Gal		FRESH WATER							

Fluid #	Stage Type	Fluid Name	Qty	Qty UoM	Mixing Density lbm/gal	Yield ft3/sack	Mix Fluid Gal	Rate bbl/min	Total Mix Fluid Gal					
3	VariCem GJ1	VARICEM (TM) CEMENT	165	sack	12.8	2.11		8	11.77					
11.71 Gal		FRESH WATER												
Fluid #	Stage Type	Fluid Name	Qty	Qty UoM	Mixing Density lbm/gal	Yield ft3/sack	Mix Fluid Gal	Rate bbl/min	Total Mix Fluid Gal					
4	Fresh Water Displacement	Fresh Water Displacement	85	bbl	8.4			10						
<table border="1"> <tr> <td>Cement Left In Pipe</td> <td>Amount</td> <td>46 ft</td> <td>Reason</td> <td>Shoe Joint</td> </tr> </table>										Cement Left In Pipe	Amount	46 ft	Reason	Shoe Joint
Cement Left In Pipe	Amount	46 ft	Reason	Shoe Joint										
Comment														

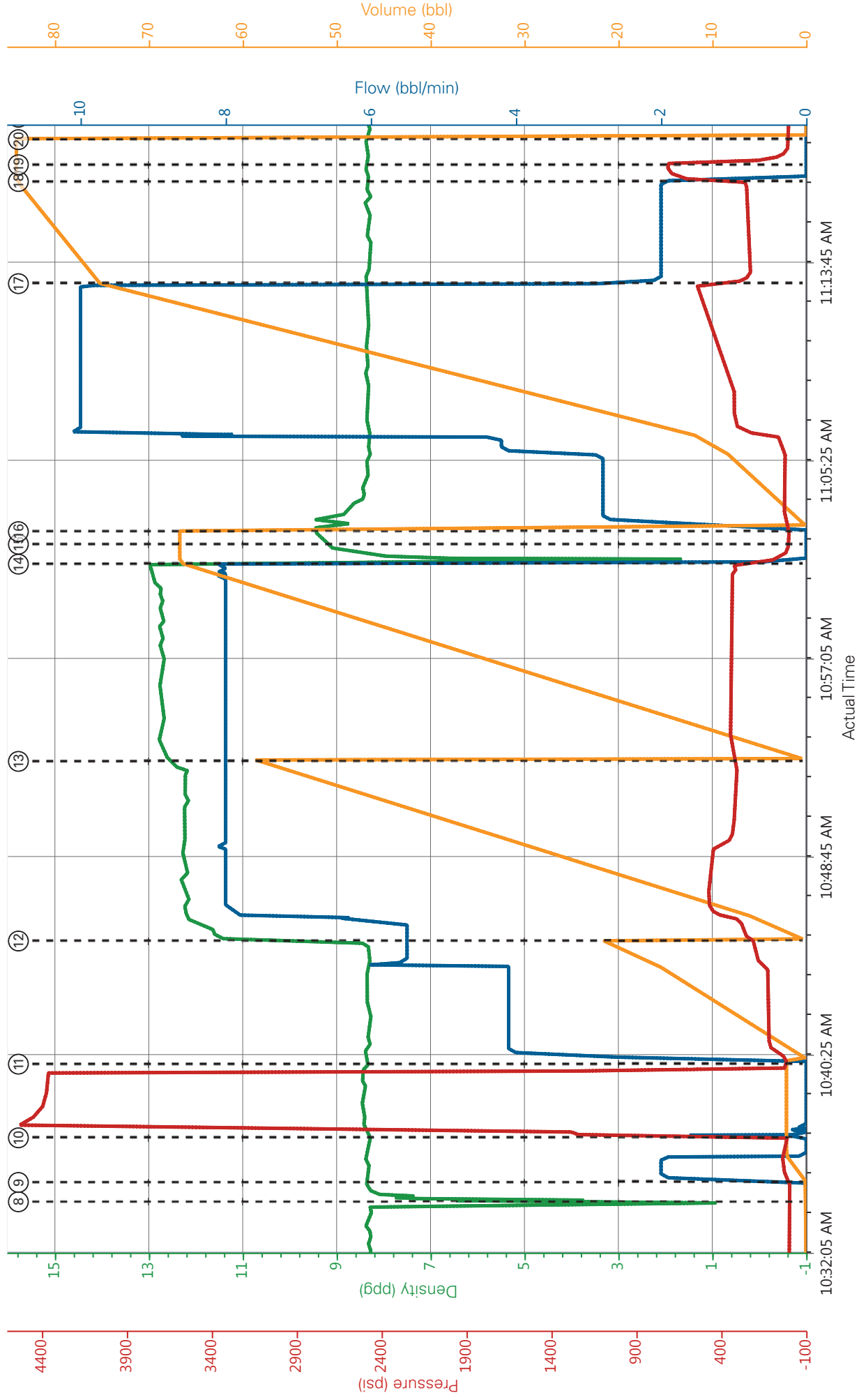
4.5 Job Event Log

Type	Seq. No.	Activity	Graph Label	Date	Time	Source	DH Density (ppg)	Comb Pump Rate (bbl/min)	PS Pump Press (psi)	Pump Stg Tot (bbl)	Comments
Event	1	Call Out	Call Out	1/16/2015	21:00:00	USER					TD 1138 TP 1128 SJ 46 CASING 9.625 32.3# H-40 MUD 10.4 HOLE SIZE 13.5
Event	2	Depart Yard Safety Meeting	Depart Yard Safety Meeting	1/16/2015	21:45:00	USER					
Event	3	Crew Leave Yard	Crew Leave Yard	1/16/2015	22:00:00	USER					
Event	4	Arrive At Loc	Arrive At Loc	1/17/2015	02:00:00	USER					
Event	5	Assessment Of Location Safety Meeting	Assessment Of Location Safety Meeting	1/17/2015	02:30:00	USER					
Event	6	Pre-Rig Up Safety Meeting	Pre-Rig Up Safety Meeting	1/17/2015	10:00:00	USER					
Event	7	Pre-Job Safety Meeting	Pre-Job Safety Meeting	1/17/2015	10:30:00	USER					
Event	8	Start Job	Start Job	1/17/2015	10:34:22	COM2					
Event	9	Prime Pumps	Prime Pumps	1/17/2015	10:35:11	COM2	8.4	2	42	2	FRESH WATER
Event	10	Test Lines	Test Lines	1/17/2015	10:37:04	COM2			4400		
Event	11	Pump Spacer 1	Pump Spacer 1	1/17/2015	10:40:10	COM2	8.4	6	188	20	FRESH WATER
Event	12	Pump Lead Cement	Pump Lead Cement	1/17/2015	10:45:20	COM2	12.3	8	335	59.4	140 SKS 12.3 YIELD 2.38 WAT/REQ 13.77
Event	13	Pump Tail Cement	Pump Tail Cement	1/17/2015	10:52:54	COM2	12.8	8	337	62	165 SKS 12.8 YIELD 2.11 WAT/REQ 11.77
Event	14	Shutdown	Shutdown	1/17/2015	11:01:12	COM2					
Event	15	Drop Top Plug	Drop Top Plug	1/17/2015	11:02:02	COM2					
Event	16	Pump Displacement	Pump Displacement	1/17/2015	11:02:34	COM2	8.4	10	557	75	FRESH WATER
Event	17	Slow Rate	Slow Rate	1/17/2015	11:13:00	USER	8.4	2	255	10	
Event	18	Bump Plug	Bump Plug	1/17/2015	11:17:17	COM2	8.4	2	255	85	PRESSURED UP TO 760 PSI
Event	19	Check Floats	Check Floats	1/17/2015	11:18:00	USER					FLOATS HELD
Event	20	End Job	End Job	1/17/2015	11:19:03	COM2					CEMENT TO SURFACE 20 BBLs

Type	Seq. No.	Activity	Graph Label	Date	Time	Source	DH Density (ppg)	Comb Pump Rate (bbl/min)	PS Pump Press (psi)	Pump Stg Tot (bbl)	Comments
Event	21	Post-Job Safety Meeting (Pre Rig-Down)	Post-Job Safety Meeting (Pre Rig-Down)	1/17/2015	11:20:00	USER					GOOD CIRCULATION THROUGHOUT JOB
Event	22	Depart Location Safety Meeting	Depart Location Safety Meeting	1/17/2015	11:55:00	USER					CASING WAS NOT MOVED THROUGHOUT JOB
Event	23	Crew Leave Location	Crew Leave Location	1/17/2015	12:00:00	USER					THANKS FOR USING HALLIBURTON BILL JAMISON & CREW



- ① Call Out n/a;n/a;n/a;n/a
- ② Depart Yard Safety Meeting n/a;n/a;n/a;n/a
- ③ Crew Leave Yard n/a;n/a;n/a;n/a
- ④ Arrive At Loc n/a;n/a;n/a;n/a
- ⑤ Assessment Of Location Safety Meeting n/a;n/a;n/a;n/a
- ⑥ Pre-Rig Up Safety Meeting 8.31;5.2;120;10.5
- ⑦ Pre-Job Safety Meeting 8.35;0;0;0
- ⑧ Start Job 7.7;0;-2;0
- ⑨ Prime Pumps 8.29;1.7;2;0.2
- ⑩ Test Lines 8.29;0;1260;2.1
- ⑪ Pump Spacer 1 8.38;0;14;2.1
- ⑫ Pump Lead Cement 11.57;5.5;243;0.7
- ⑬ Pump Tail Cement 12.6;8;321;0.7
- ⑭ Shutdown 6.43;0;115;66.7
- ⑮ Drop Top Plug 9.3;0;2;66.7
- ⑯ Pump Displacement 9.45;0;1;66.7
- ⑰ Slow Rate 8.38;2.1;274;75.6
- ⑱ Bump Plug 8.3;0;631;84.1
- ⑲ Check Floats 8.38;0;295;84.1
- ⑳ End Job 8.34;0;1;0
- ㉑ Post-Job Safety Meeting (Pre Rig-Down) 8.29;0;0;0
- ㉒ Depart Location Safety Meeting n/a;n/a;n/a;n/a
- ㉓ Crew Leave Location n/a;n/a;n/a;n/a



HALLIBURTON

Water Analysis Report

Company: WPX
Submitted by: BILL JAMISON
Attention: DALLAS SCOTT
Lease: MEAD-RWF
Well #: 43-23

Date: 1/17/2015
Date Rec.: 1/17/2015
S.O.#: 902042727
Job Type: 9.625 SURFACE

Specific Gravity	<i>MAX</i>	<i>1</i>
pH	<i>8</i>	<i>7</i>
Potassium (K)	<i>5000</i>	<i>700</i> Mg / L
Calcium (Ca)	<i>500</i>	<i>120</i> Mg / L
Iron (FE2)	<i>300</i>	<i>0</i> Mg / L
Chlorides (Cl)	<i>3000</i>	<i>250</i> Mg / L
Sulfates (SO ₄)	<i>1500</i>	<i>-200</i> Mg / L
Chlorine (Cl ₂)		<i>0</i> Mg / L
Temp	<i>40-80</i>	<i>40</i> Deg
Total Dissolved Solids		<i>830</i> Mg / L

Respectfully: BILL JAMISON

Title: CEMENTING SUPERVISOR

Location: Grand Junction, CO

NOTICE:

This report is limited to the described sample tested. Any person using or relying on this report agrees that Halliburton shall not be liable for any loss or damage whether due to act or omission resulting from such report.

Sales Order #: 0902042727	Line Item: 10	Survey Conducted Date: 1/17/2015
Customer: WPX ENERGY ROCKY MOUNTAIN LLC-EBUS		Job Type (BOM): CMT SURFACE CASING BOM
Customer Representative: LUKE HUBBARD		API / UWI: (leave blank if unknown) 05-045-20050-00
Well Name: MEAD -RWF-		Well Number: 0080124703
Well Type: DIRECTIONAL GAS	Well Country: USA	
H2S Present: No	Well State: COLORADO	Well County: GARFIELD

Dear Customer,

We hope that you were satisfied with the service quality of this job performed by Halliburton. It is the aim of our management and service personnel to deliver equipment and service of a standard unmatched in the service sector of the energy industry.

Please take the time to let us know if our performance met with your satisfaction. Please be as critical as possible to ensure we constantly improve our service. Your comments are of great value to us and are intended for the exclusive use of Halliburton.

CUSTOMER SATISFACTION SURVEY

CATEGORY	CUSTOMER SATISFACTION RESPONSE	
Survey Conducted Date	The date the survey was conducted	1/17/2015
Survey Interviewer	The survey interviewer is the person who initiated the survey.	HAL9235
Customer Participation	Did the customer participate in this survey? (Y/N)	Yes
Customer Representative	Enter the Customer representative name	LUKE HUBBARD
HSE	Was our HSE performance satisfactory? Circle Y or N	Yes
Equipment	Were you satisfied with our Equipment? Circle Y or N	Yes
Personnel	Were you satisfied with our people? Circle Y or N	Yes
Customer Comment	Customer's Comment	NONE

CUSTOMER SIGNATURE

Sales Order #: 0902042727	Line Item: 10	Survey Conducted Date: 1/17/2015
Customer: WPX ENERGY ROCKY MOUNTAIN LLC-EBUS		Job Type (BOM): CMT SURFACE CASING BOM
Customer Representative: LUKE HUBBARD		API / UWI: (leave blank if unknown) 05-045-20050-00
Well Name: MEAD -RWF-		Well Number: 0080124703
Well Type: DIRECTIONAL GAS	Well Country: USA	
H2S Present: No	Well State: COLORADO	Well County: GARFIELD

KEY PERFORMANCE INDICATORS

General	
Survey Conducted Date The date the survey was conducted	1/17/2015

Cementing KPI Survey	
Type of Job Select the type of job. (Cementing or Non-Cementing)	0
Select the Maximum Deviation range for this Job What is the highest deviation for the job you just completed? This may not be the maximum well deviation.	Vertical
Total Operating Time (hours) Total Operating Hours Including Rig-up, Pumping, Rig-down. Enter in decimal format.	3
HSE Incident, Accident, Injury HSE Incident, Accident, Injury. This should be recordable incidents only.	No
Was the job purpose achieved? Was the job delivered correctly as per customer agreed design?	Yes
Pumping Hours Total number of hours pumping fluid on this job. Enter in decimal format.	1
Type of Rig Classification Job Was Performed Type Of Rig (classification) Job Was Performed On	Drilling Rig (Portable)
Number Of JSAs Performed Number Of Jsas Performed	5
Was this a Primary Cement Job (Yes / No) Primary Cement Job= Casing job, Liner job, or Tie-back job.	Yes
Number of Unplanned Shutdowns Unplanned shutdown is when injection stops for any period of time.	0
Customer Non-Productive Rig Time (hrs)	0

Sales Order #: 0902042727	Line Item: 10	Survey Conducted Date: 1/17/2015
Customer: WPX ENERGY ROCKY MOUNTAIN LLC-EBUS		Job Type (BOM): CMT SURFACE CASING BOM
Customer Representative: LUKE HUBBARD		API / UWI: (leave blank if unknown) 05-045-20050-00
Well Name: MEAD -RWF-		Well Number: 0080124703
Well Type: DIRECTIONAL GAS	Well Country: USA	
H2S Present: No	Well State: COLORADO	Well County: GARFIELD

Lost time due to Halliburton in the start, execution, or completion of an ordered service or product, or delays in a follow-on service. Enter in decimal format. 0 if none.	
Was the non productive time or the unplanned shutdown caused by a problem with a piece of equipment? Was the non productive time or the unplanned shutdown caused by a problem with a piece of equipment?	No
Did We Run Wiper Plugs? Did We Run Top And Bottom Casing Wiper Plugs?	Top
If a top plug was run, was the plug bumped? (Yes/No/N/A) If a top plug was run, was the plug bumped? (Yes/No/N/A)	Yes
If applicable, was Halliburton float equipment used? (Yes/No/N/A) If applicable, was Halliburton float equipment used? (Yes/No/N/A)	No
If applicable, did the floats hold? (Yes/No/N/A) If applicable, did the floats hold? (Yes/No/N/A)	Yes
Mixing Density of Job Stayed in Designed Density Range (0-100%) Density Range defined as +/- .20 ppg. Calculation: Total BBLs cement mixed at designed density divided by total BBLs of cement multiplied by 100	98
Pump Rate (percent) of Job Stayed At Designed Pump Rate Pump Rate range defined as +/- 1bbl/min. Calculation: Total BBLs of fluid pumped at the designed rate divided by Total BBLs of fluid pumped, multiplied by 100	98
If applicable, were there returns throughout the job? (Yes/No/N/A) If applicable, were there returns throughout the job? (Yes/No/N/A)	Yes
Nbr of Remedial Plug Jobs Rqd - HES Number Of Remedial Plug Jobs Needed After Primary Plug Pumped By HES	0
Nbr of Remedial Sqz Jobs Rqd - HES Number Of Remedial Squeeze Jobs Required After Primary Job Performed By HES	0