

# LEGEND:

- = 90° SYMBOL
- = PROPOSED WELLHEAD.
- = TARGET BOTTOM HOLE.
- = SECTION CORNERS LOCATED.
- = PROPOSED TOP OF PRODUCTION

T10N, R58W, 6th P.M.

Target  
Bottom Hole

R  
58  
W

1917 Brass Cap,  
1.0' High  
Lat: 40.817086°  
Long: 103.803497°

N89°33'18"E - 2674.93' (Meas.)

N89°33'18"E - 2674.93' (Meas.)

2010 Alum. Cap,  
0.3' High, N/E Fence  
Lat: 40.816975°  
Long: 103.822819°

2012 Alum. Cap,  
0.4' High  
Lat: 40.817031°  
Long: 103.813158°

N01°13'45"W - 2661.92' (Meas.)

NOTE:  
THE PROPOSED TARGET BOTTOM HOLE FOR  
THIS WELL IS LOCATED IN THE NE 1/4 NE  
1/4 OF SECTION 24, T10N, R58W, 6th P.M.  
AT 100' FNL 825' FEL. IT BEARS  
N00°01'34"E 9803.03' FROM THE PROPOSED  
TOP OF PRODUCTION.

2012 Alum. Cap,  
0.1' High  
Lat: 40.809672°  
Long: 103.822617°

N01°13'45"W - 2661.92' (Meas.)

LINE TABLE		
LINE	DIRECTION	LENGTH
L1	N45°44'14"W	476.45'

25

2012 Alum. Cap,  
Flush W/Ground  
Lat: 40.809803°  
Long: 103.803386°

S01°36'31"E - 2642.88' (Meas.)

Proposed  
Top of  
Production

RAZOR #25P-2414

Elev. Ungraded Ground = 4741.0'

2010 Alum. Cap,  
Flush W/Ground,  
N/W Fence  
Lat: 40.802369°  
Long: 103.822411°

S89°15'31"W - 2670.99' (Meas.)

S89°15'31"W - 2670.99' (Meas.)

2012 Alum. Cap,  
0.2' High  
Lat: 40.802461°  
Long: 103.812767°

2010 Alum. Cap,  
Flush W/Ground  
Lat: 40.802556°  
Long: 103.803122°



PDOP = 1.4

NAD 83 (SURFACE LOCATION)	NAD 83 (PROPOSED TOP OF PRODUCTION)
LATITUDE = 40°48'12.63" (40.803508)	LATITUDE = 40°48'15.94" (40.804428)
LONGITUDE = 103°48'19.55" (103.805431)	LONGITUDE = 103°48'23.98" (103.806661)
NAD 27 (SURFACE LOCATION)	NAD 27 (SURFACE LOCATION)
LATITUDE = 40°48'12.68" (40.803522)	LATITUDE = 40°48'15.96" (40.804433)
LONGITUDE = 103°48'17.74" (103.804928)	LONGITUDE = 103°48'22.17" (103.806158)

## BASIS OF BEARINGS

BASIS OF BEARINGS IS A G.P.S. OBSERVATION

## BASIS OF ELEVATION

SPOT ELEVATION LOCATED AT THE NORTHEAST CORNER OF SECTION 15, T9N, R58W, 6th P.M. TAKEN FROM THE GATEHOOK SPRING, QUADRANGLE, COLORADO, WELD COUNTY, 7.5 MINUTE QUAD (TOPOGRAPHIC MAP) PUBLISHED BY THE UNITED STATES DEPARTMENT OF THE INTERIOR, GEOLOGICAL SURVEY. SAID ELEVATION IS MARKED AS BEING 4679 FEET.



## WHITING OIL & GAS CORP.

RAZOR #25P-2414 (SURFACE LOCATION)  
SE 1/4 SE 1/4, SECTION 25, T10N, R58W, 6th P.M.  
WELD COUNTY, COLORADO

SURVEYED BY: CHAD MEIERS, C.M.	DATE: 03-13-15
DRAWN BY: J.A.	DATE DRAWN: 03-26-15
SCALE: 1" = 1000'	REVISED: 08-19-15 B.A.
WELL LOCATION PLAT	

## CERTIFICATE

THIS IS TO CERTIFY THAT THE ABOVE PLAT WAS PREPARED FROM FIELD NOTES OF ACTUAL SURVEYS MADE BY ME OR UNDER MY SUPERVISION AND THAT THE SAME ARE TRUE AND CORRECT TO THE BEST OF MY KNOWLEDGE AND BELIEF.

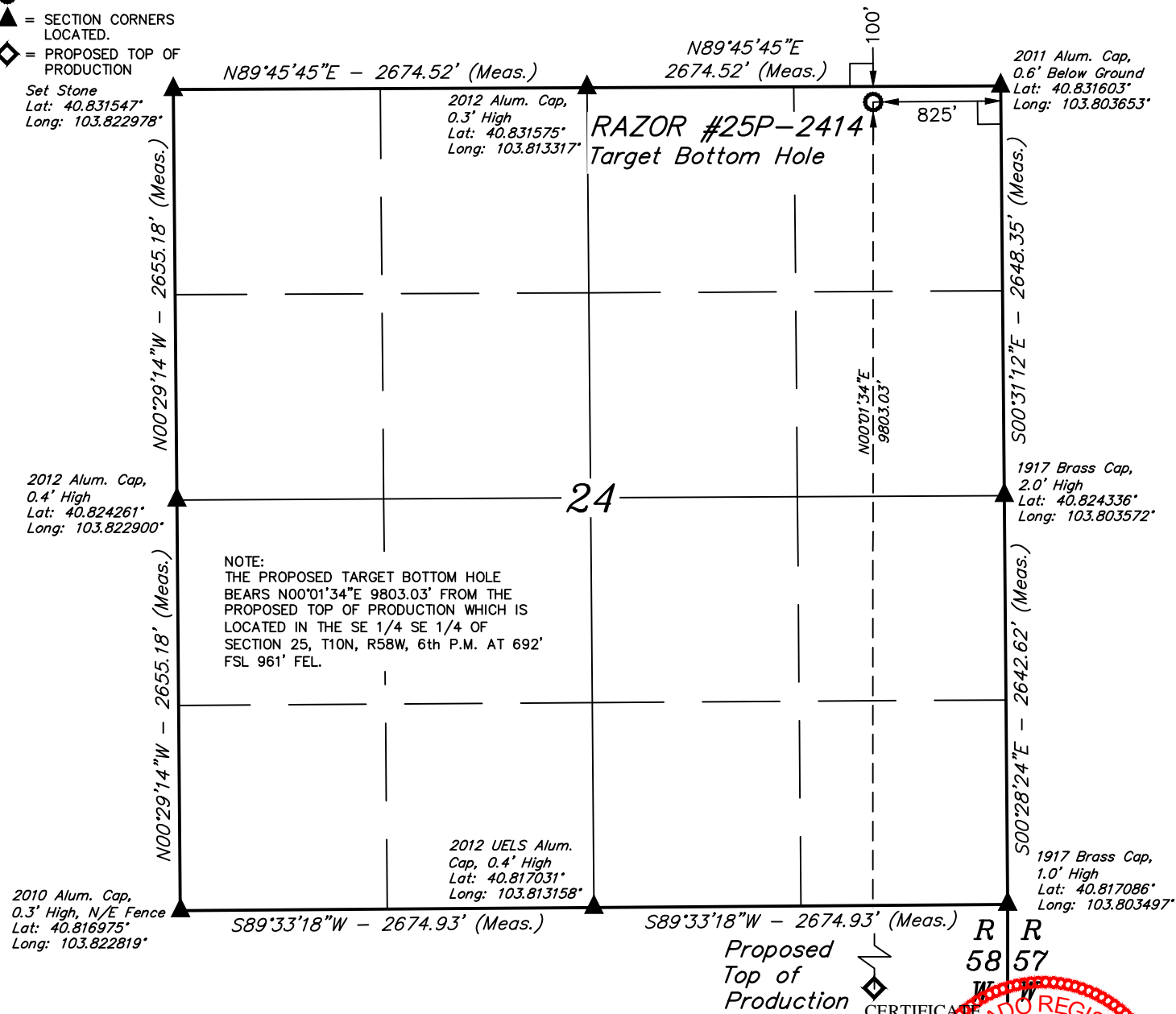


UELS, LLC  
Corporate Office \* 85 South 200 East  
Vernal, UT 84078 \* (435) 789-1017

**LEGEND:**

- = 90° SYMBOL  
 = PROPOSED WELLHEAD.  
 = TARGET BOTTOM HOLE.  
 = SECTION CORNERS LOCATED.  
 = PROPOSED TOP OF PRODUCTION

**T10N, R58W, 6th P.M.**



NOTE:  
THE PROPOSED TARGET BOTTOM HOLE BEARS N00°01'34"E 9803.03' FROM THE PROPOSED TOP OF PRODUCTION WHICH IS LOCATED IN THE SE 1/4 SE 1/4 OF SECTION 25, T10N, R58W, 6th P.M. AT 692' FSL 961' FEL.

THIS IS TO CERTIFY THAT THE ABOVE PLAT WAS PREPARED FROM FIELD NOTES OF ACTUAL SURVEYS MADE BY ME OR UNDER MY SUPERVISION AND THAT THE SAME ARE TRUE AND CORRECT TO THE BEST OF MY KNOWLEDGE AND BELIEF.

<b>NAD 83 (TARGET BOTTOM HOLE)</b>
LATITUDE = 40°49'52.75" (40.831319)
LONGITUDE = 103°48'23.87" (103.806631)
<b>NAD 27 (TARGET BOTTOM HOLE)</b>
LATITUDE = 40°49'52.80" (40.831333)
LONGITUDE = 103°48'22.07" (103.806131)



**BASIS OF BEARINGS**  
BASIS OF BEARINGS IS A G.P.S. OBSERVATION  
**BASIS OF ELEVATION**

SPOT ELEVATION LOCATED AT THE NORTHEAST CORNER OF SECTION 15, T9N, R58W, 6th P.M. TAKEN FROM THE GATEHOOK SPRING, QUADRANGLE, COLORADO, WELD COUNTY, 7.5 MINUTE QUAD (TOPOGRAPHIC MAP) PUBLISHED BY THE UNITED STATES DEPARTMENT OF THE INTERIOR, GEOLOGICAL SURVEY. SAID ELEVATION IS MARKED AS BEING 4679 FEET.



**WHITING OIL & GAS CORP.**

**RAZOR #25P-2414 (TARGET BOTTOM HOLE)**  
**NE 1/4 NE 1/4, SECTION 24, T10N, R58W, 6th P.M.**  
**WELD COUNTY, COLORADO**

SURVEYED BY: CHAD MEIERS, C.M.	DATE: 03-13-15
DRAWN BY: J.A.	DATE DRAWN: 03-26-15
SCALE: 1" = 1000'	REVISED: 08-19-15 B.A.
<b>WELL LOCATION PLAT</b>	



**UELS, LLC**  
Corporate Office \* 85 South 200 East  
Vernal, UT 84078 \* (435) 789-1017