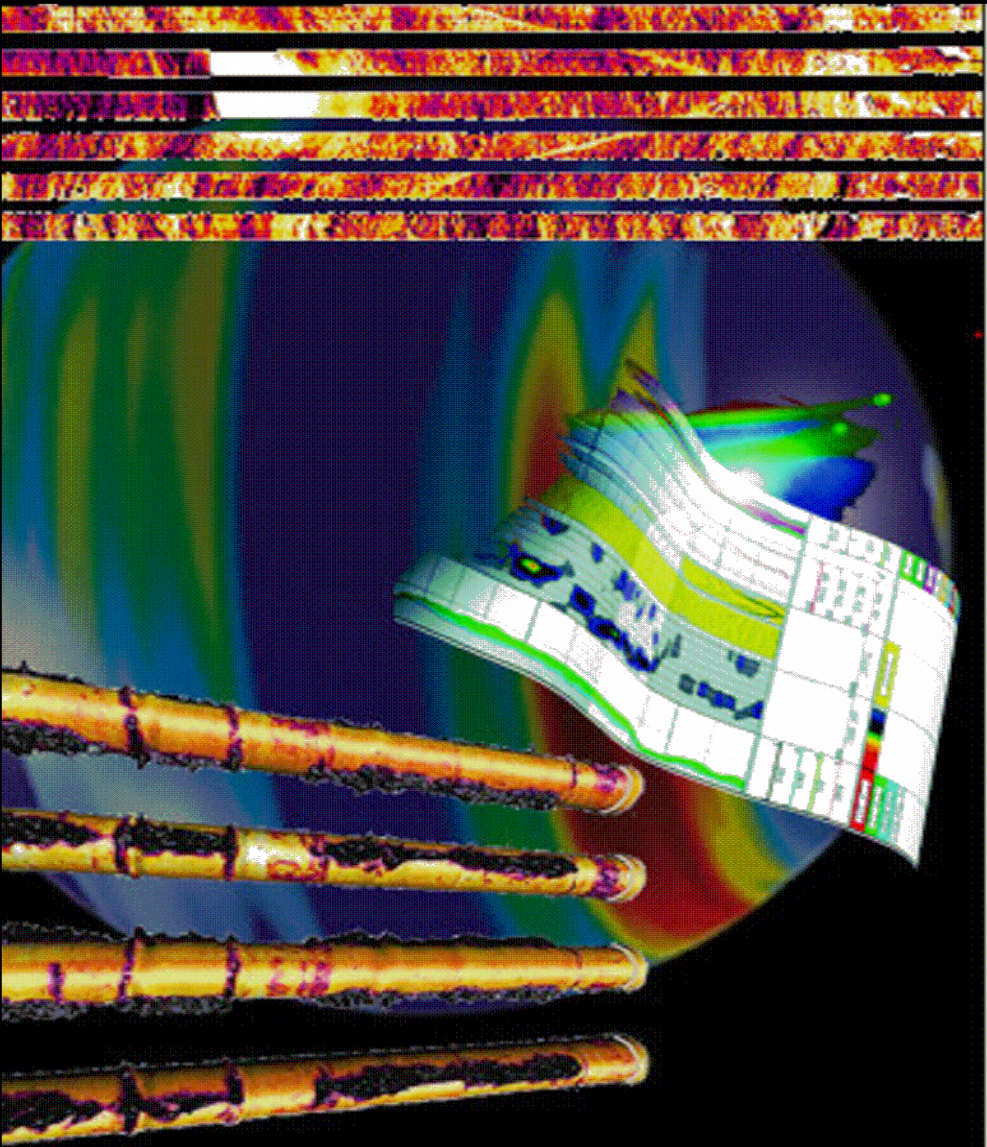


# HALLIBURTON



## RMTI NEURAL NETWORK TRIPLE COMBO

COMPANY URSA OPERATING CO, LLC.

WELL YATER 42B-18-07-95

FIELD/BLOCK PARACHUTE

COUNTY GARFIELD STATE CO

Location Elev.: K.B. 5536.0 ft

SHL: 1805' FSL & 1128' FWL  
BHL: 1856' FNL & 660' FEL

D.F. 5535.0 ft

G.L. 5519.0 ft

Date Processed 09/07/2015 Processed At DENVER FRS

Interval Processed 3678'-7074' Processed By Adam Bobay

Fold here

Service Ticket No.: 902695258

PGM Version:

Logs Processed: CHI

Date Logged: 08/28/2015

Type Fluid In Hole: WATER

### DIRECTIONAL INFORMATION

Maximum Deviation

@

KOP

@

Remarks: HES RMT LOG DATED: 28 AUGUST 2015 IS THE PRIMARY DEPTH REFERENCE FOR THIS WELL.

GR-RMT RAN IN COMBINATION.

LOG INTERVALS PER CUTOMER REQUEST.

SHORT JOINTS @: 2997'-3007', 5765'-5775', 6524'-6534', AND 6665'-6675'

TRAINING WELL: YATER 12D-17-07-95

NNDPHI COMPUTED FROM NNRHOB USING 2.68 g/cc MATRIX DENSITY AND 1.0 g/cc FLUID DENSITY

THANK YOU FOR CHOOSING HALLIBURTON ENERGY SERVICES.

HALLIBURTON DOES NOT GUARANTEE THE ACCURACY OF ANY INTERPRETATION OF THE LOG DATA, CONVERSION OF LOG DATA TO PHYSICAL ROCK PARAMETERS OR RECOMMENDATIONS WHICH MAY BE GIVEN BY HALLIBURTON PERSONNEL OR WHICH APPEAR ON THE LOG OR IN ANY OTHER FORM. ANY USER OF SUCH DATA, INTERPRETATIONS, CONVERSIONS, OR RECOMMENDATIONS AGREES THAT HALLIBURTON IS NOT RESPONSIBLE EXCEPT WHERE DUE TO GROSS NEGLIGENCE OR WILLFUL MISCONDUCT, FOR ANY LOSS, DAMAGES, OR EXPENSES RESULTING FROM THE USE THEREOF.

HALLIBURTON

CHI MODELED TRIPLE COMBO

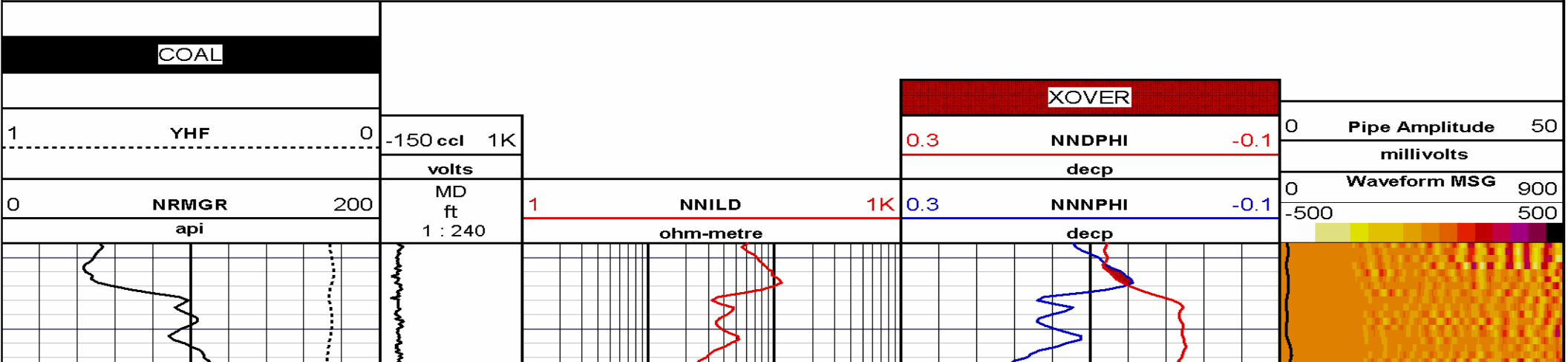
Track 1  
YHF Hydrogen Yield  
NRMGR (api) Normalized Gamma Ray

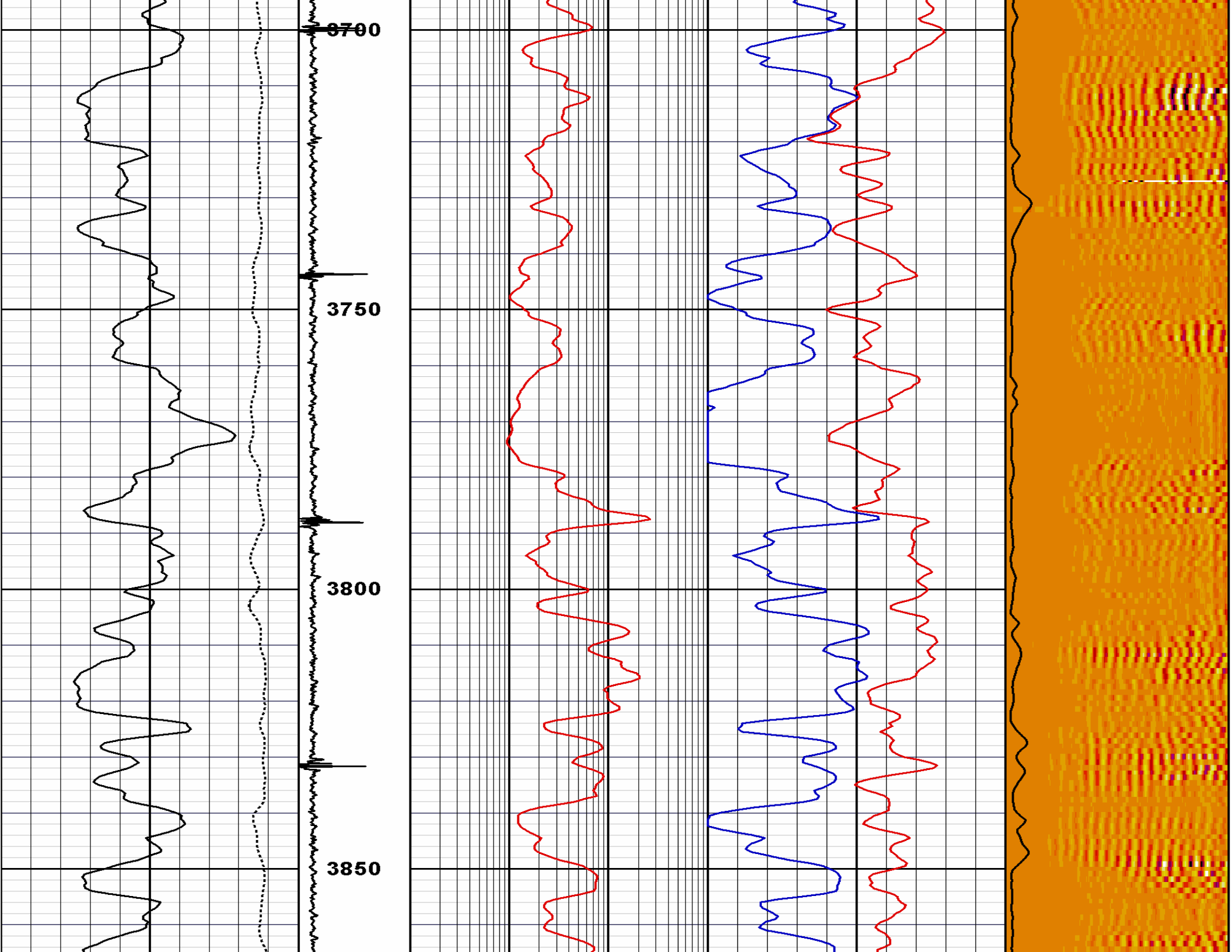
Depth Track  
DEPT (ft) Depth  
CCL (V) Collar Locator

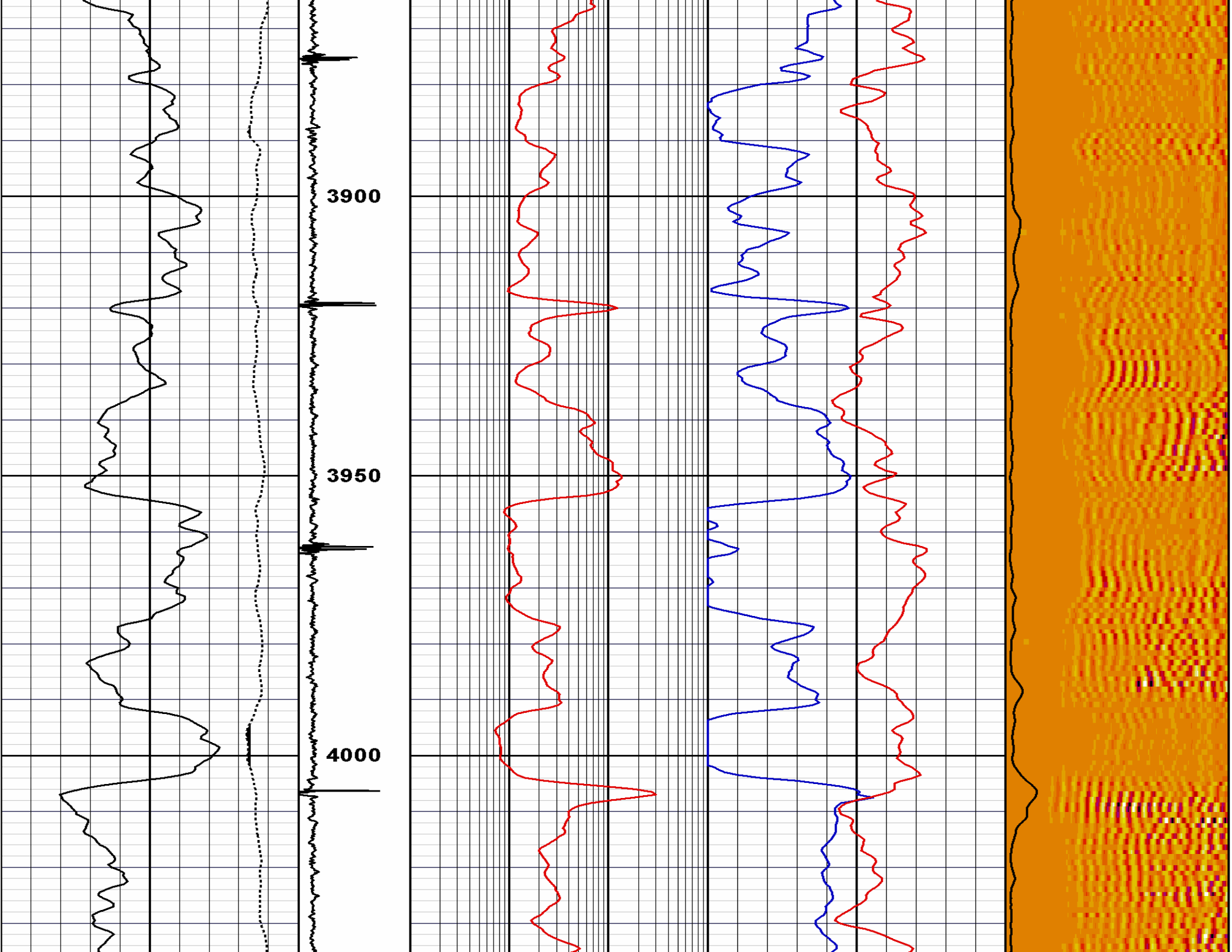
Track 2  
NNILD (ohm-metre) CHI Modeled Deep Resistivity

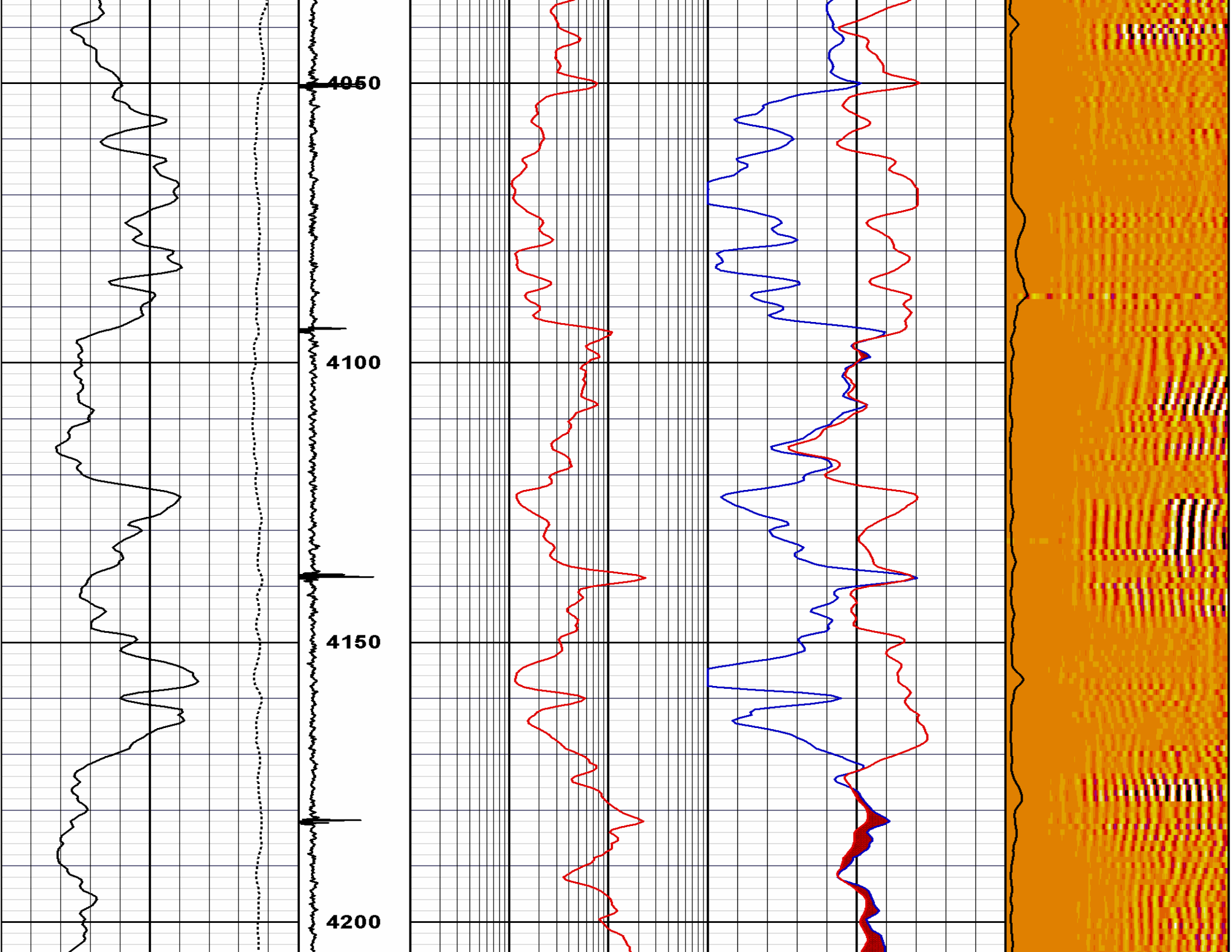
Track 3  
NNDPHI (dec) CHI Modeled Density Porosity  
NNNPHI (dec) CHI Modeled Neutron Porosity

Track 4  
AMP (mV) 3' CBL Amplitude  
WMSG 5' CBL Waveform

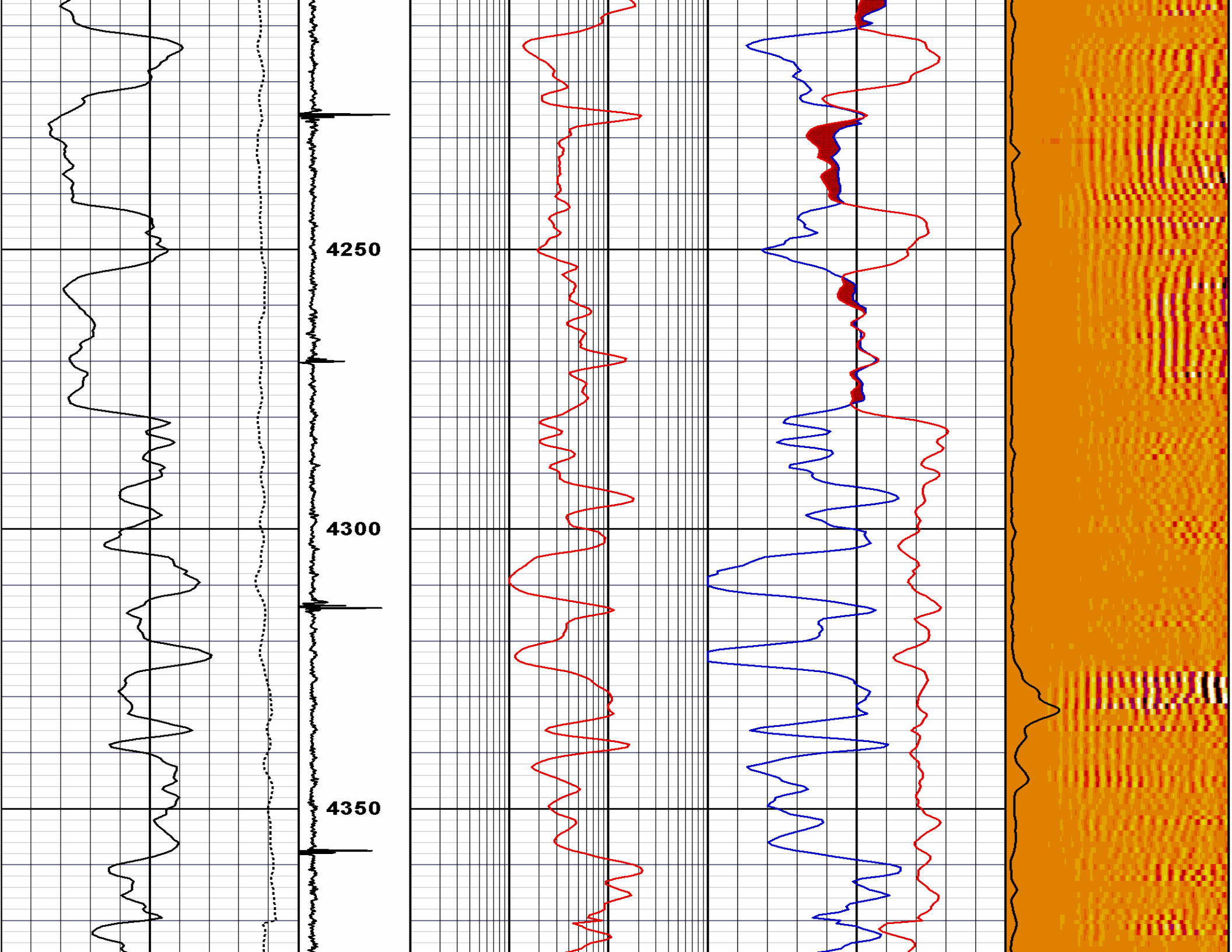


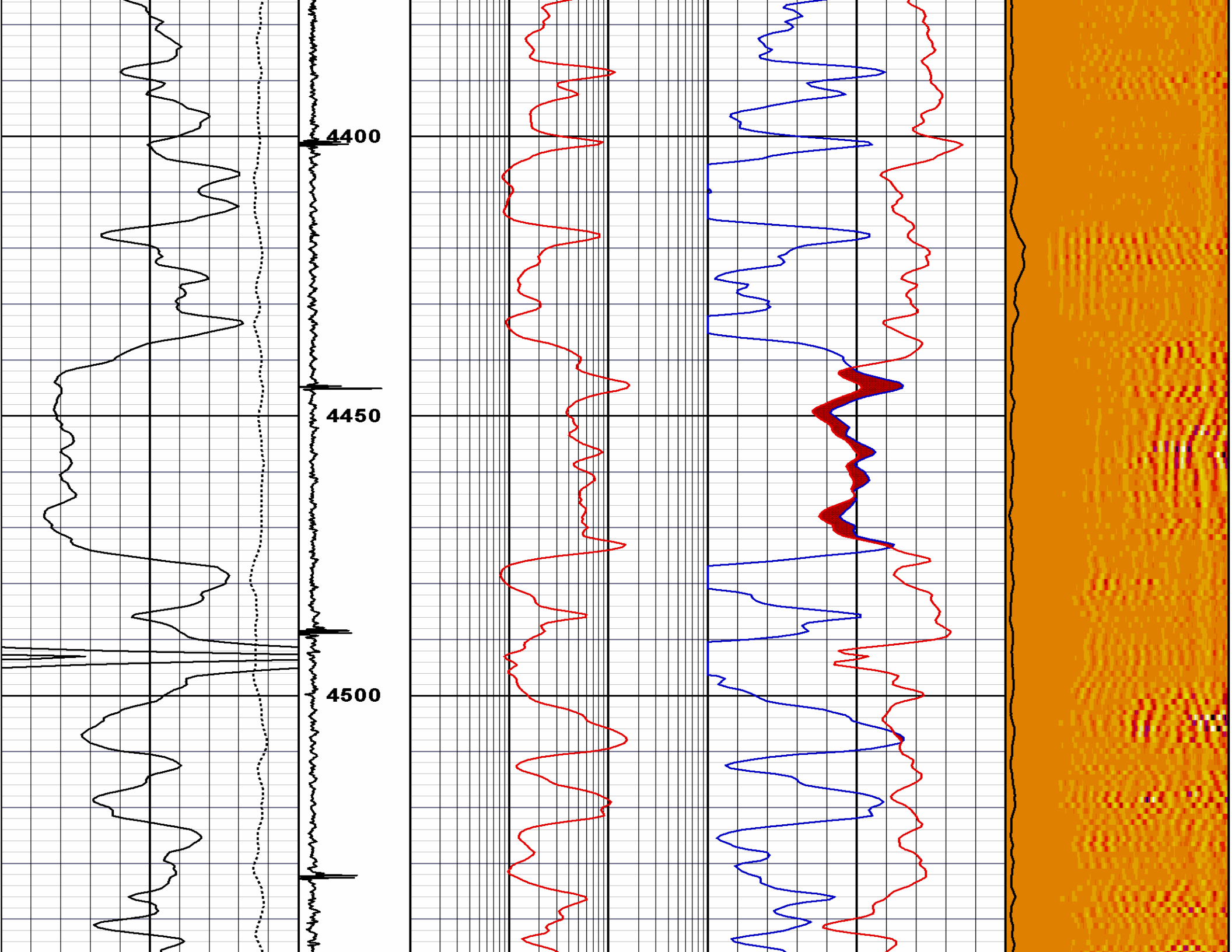


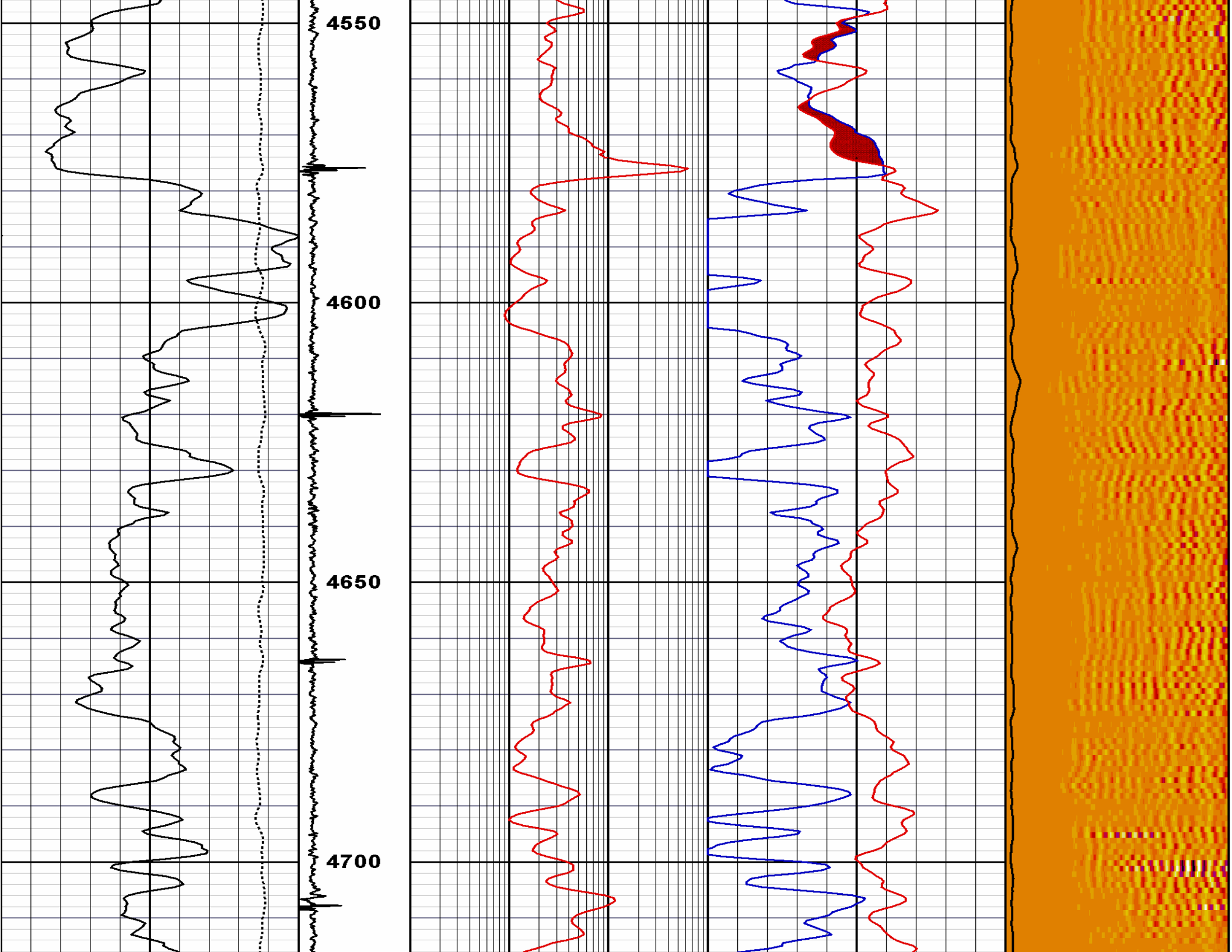




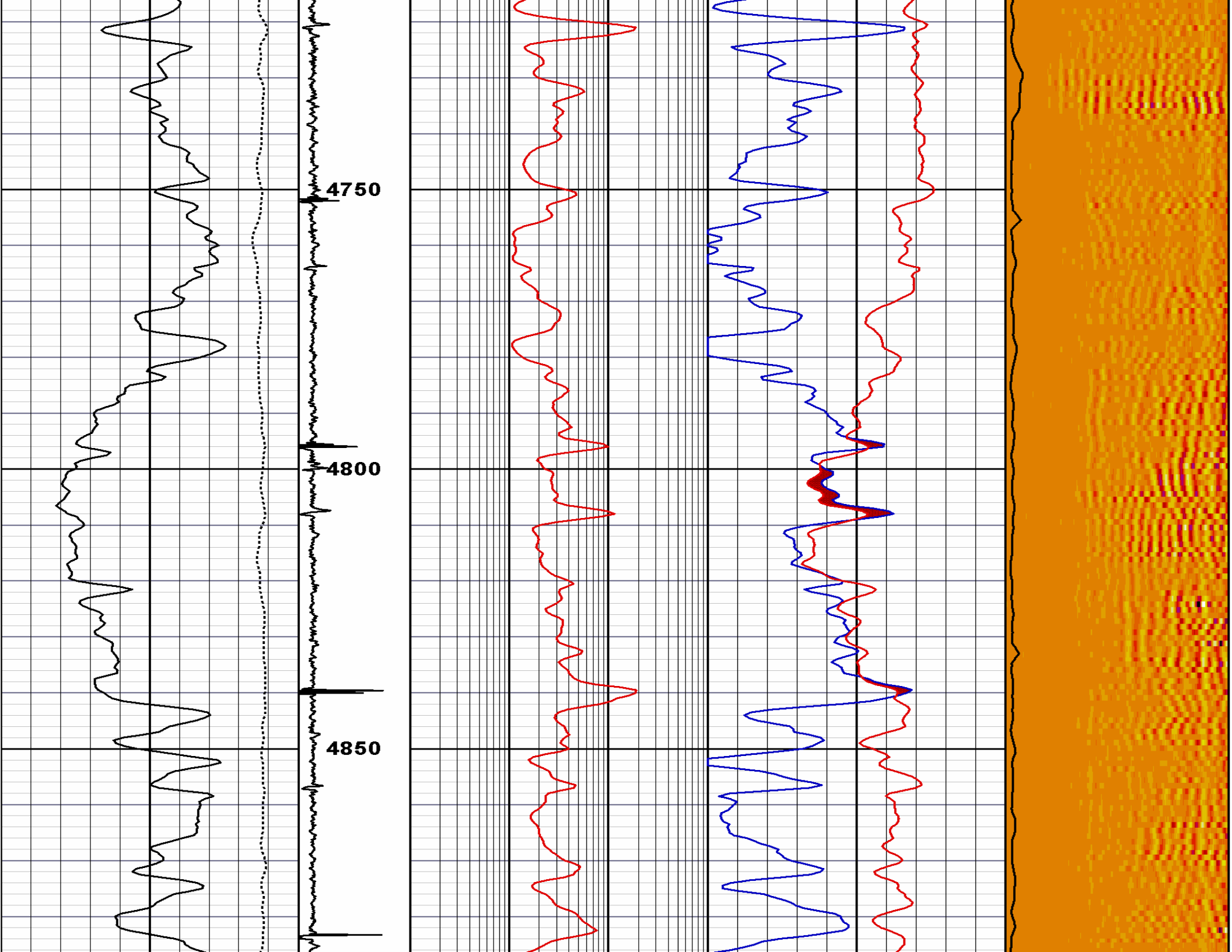


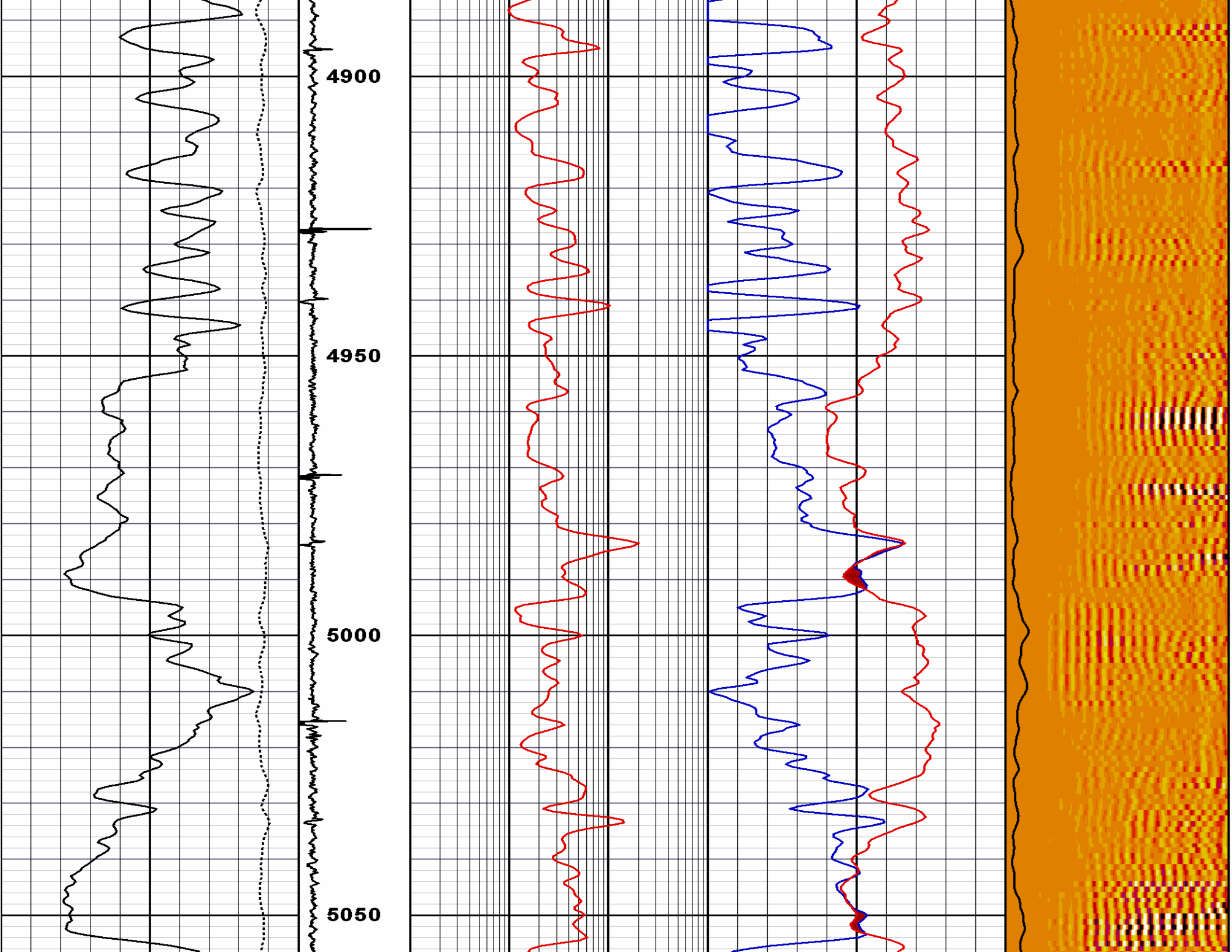


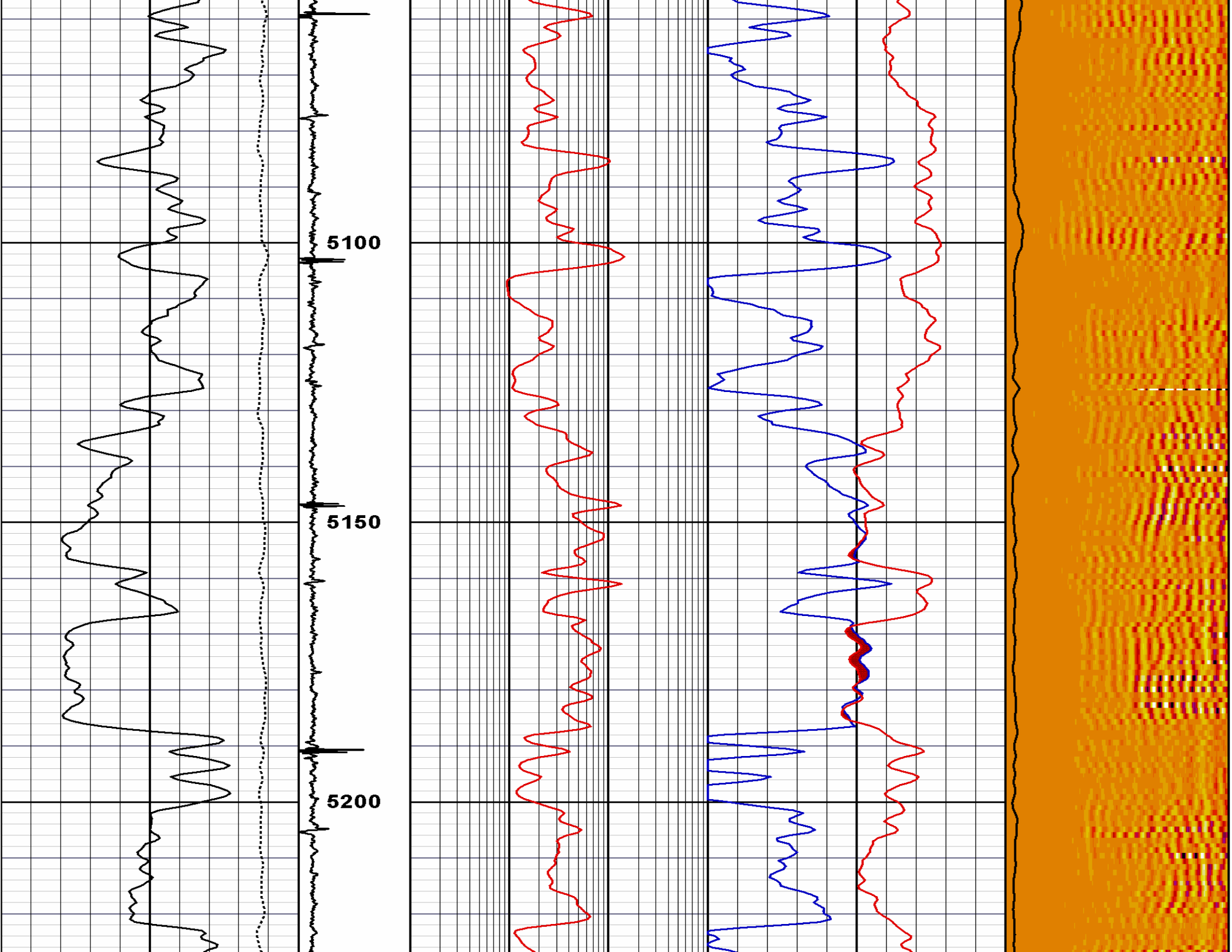


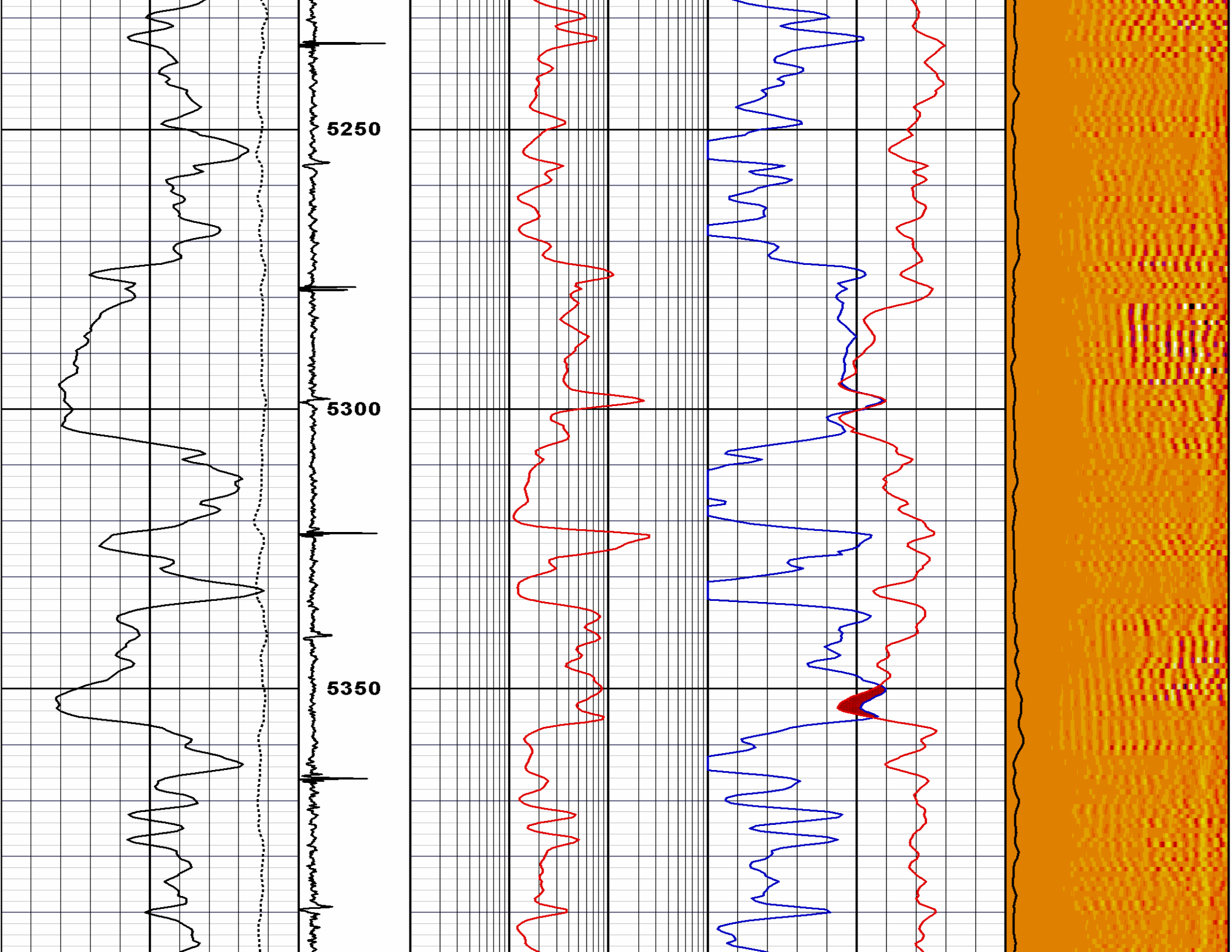


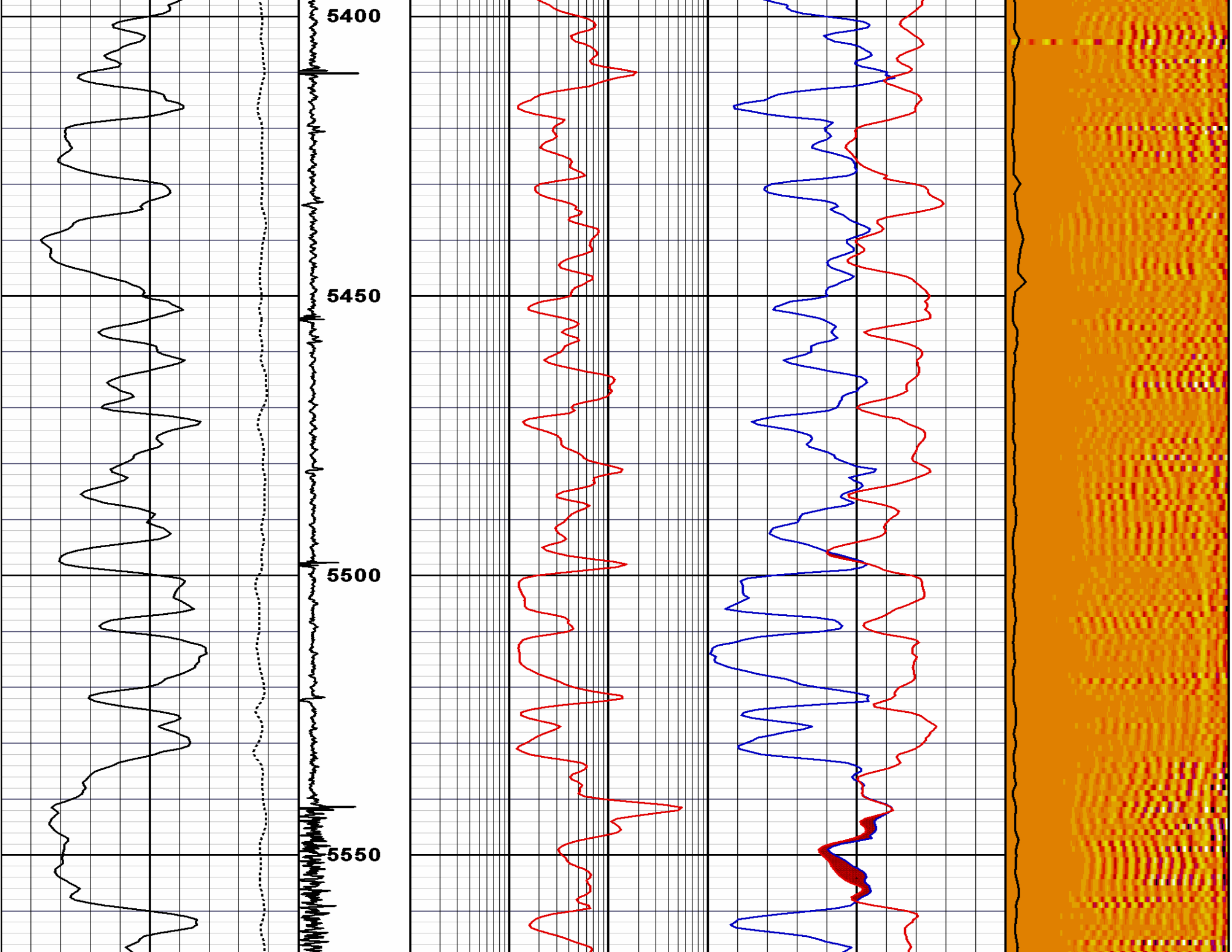


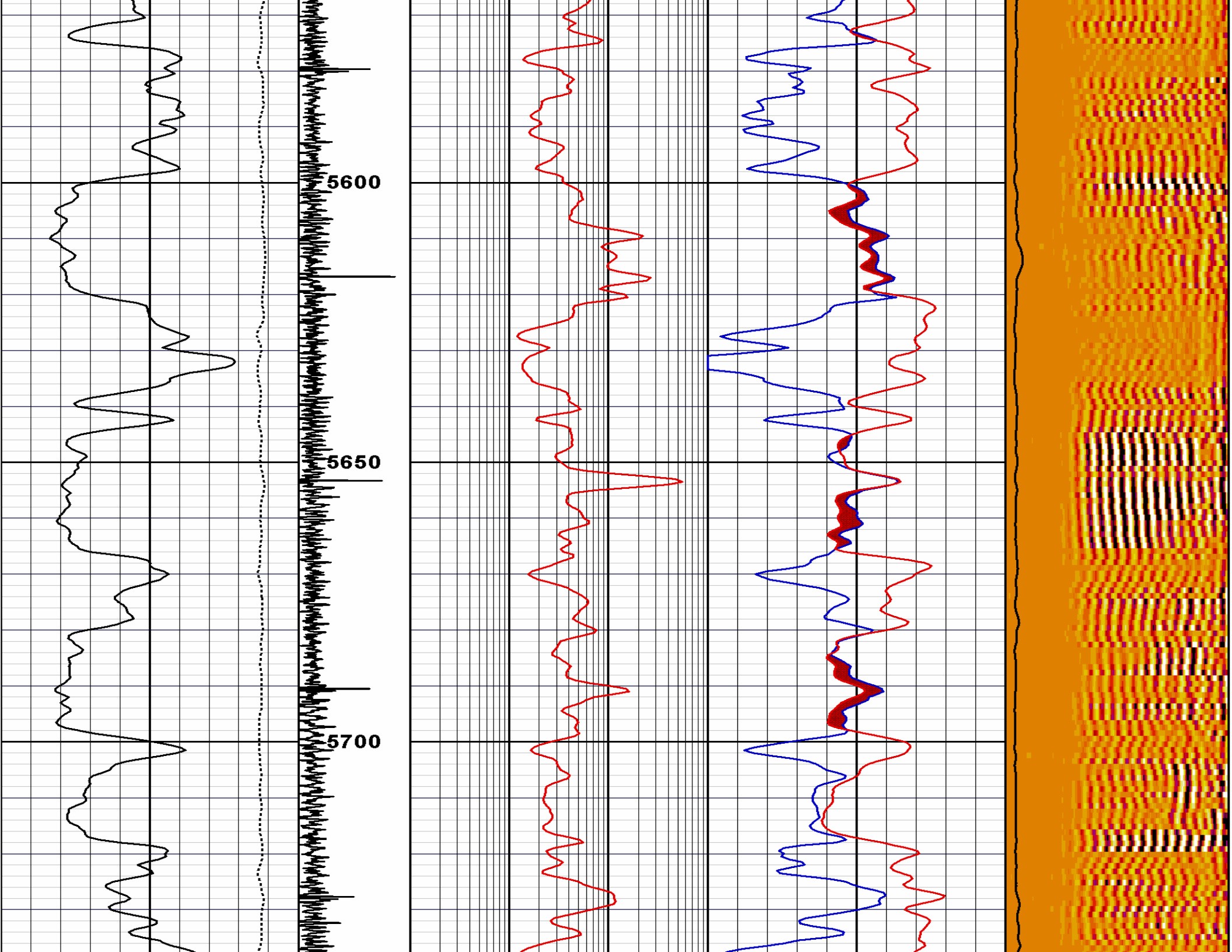




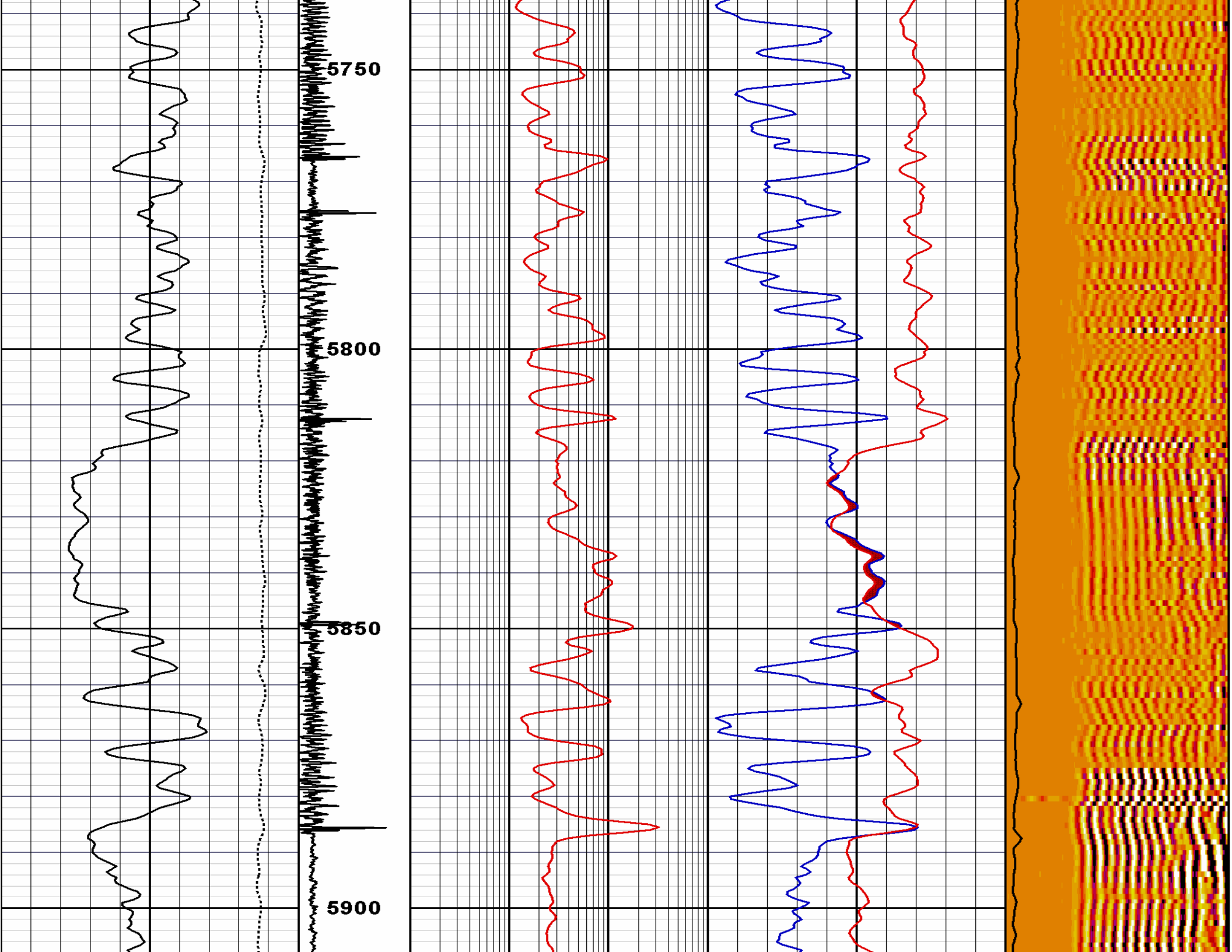


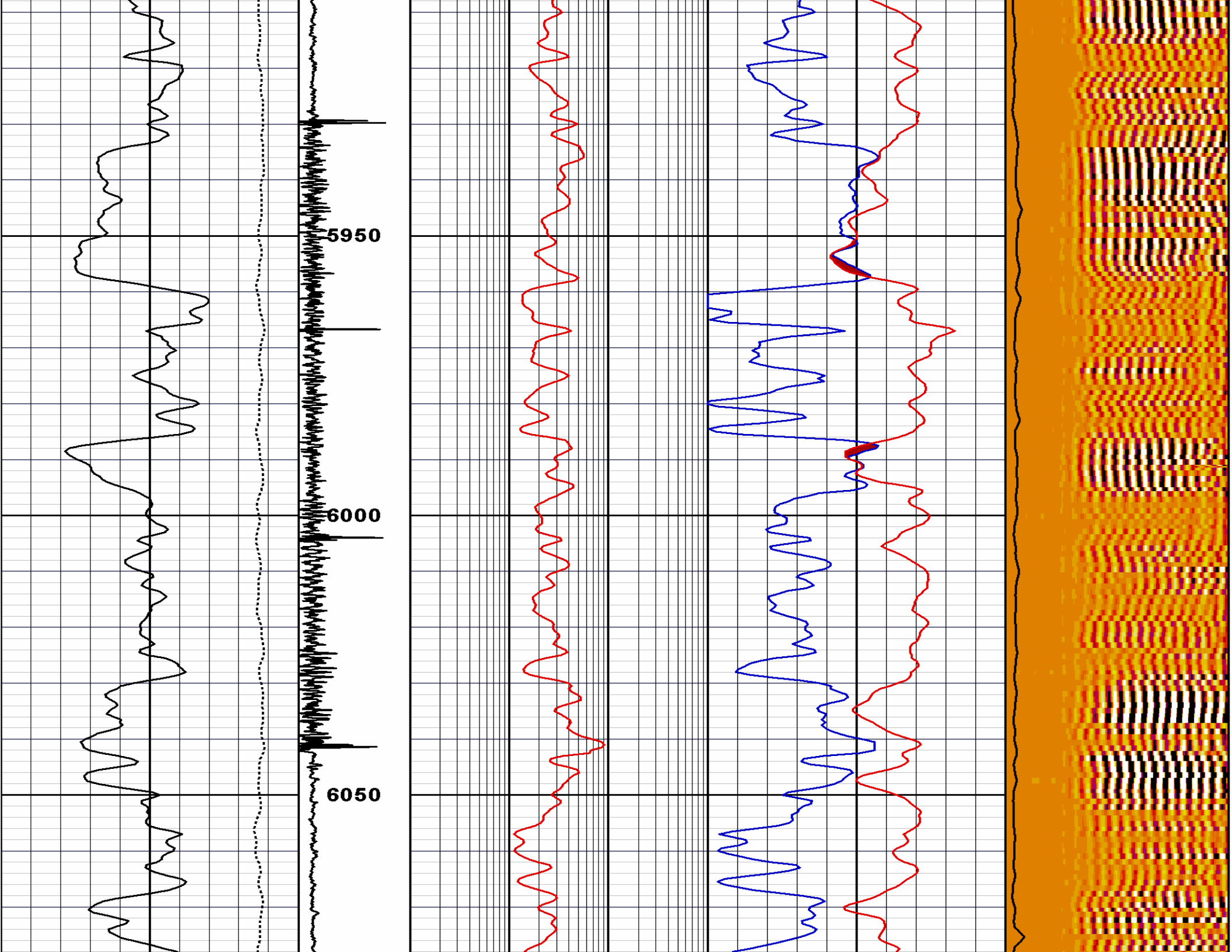


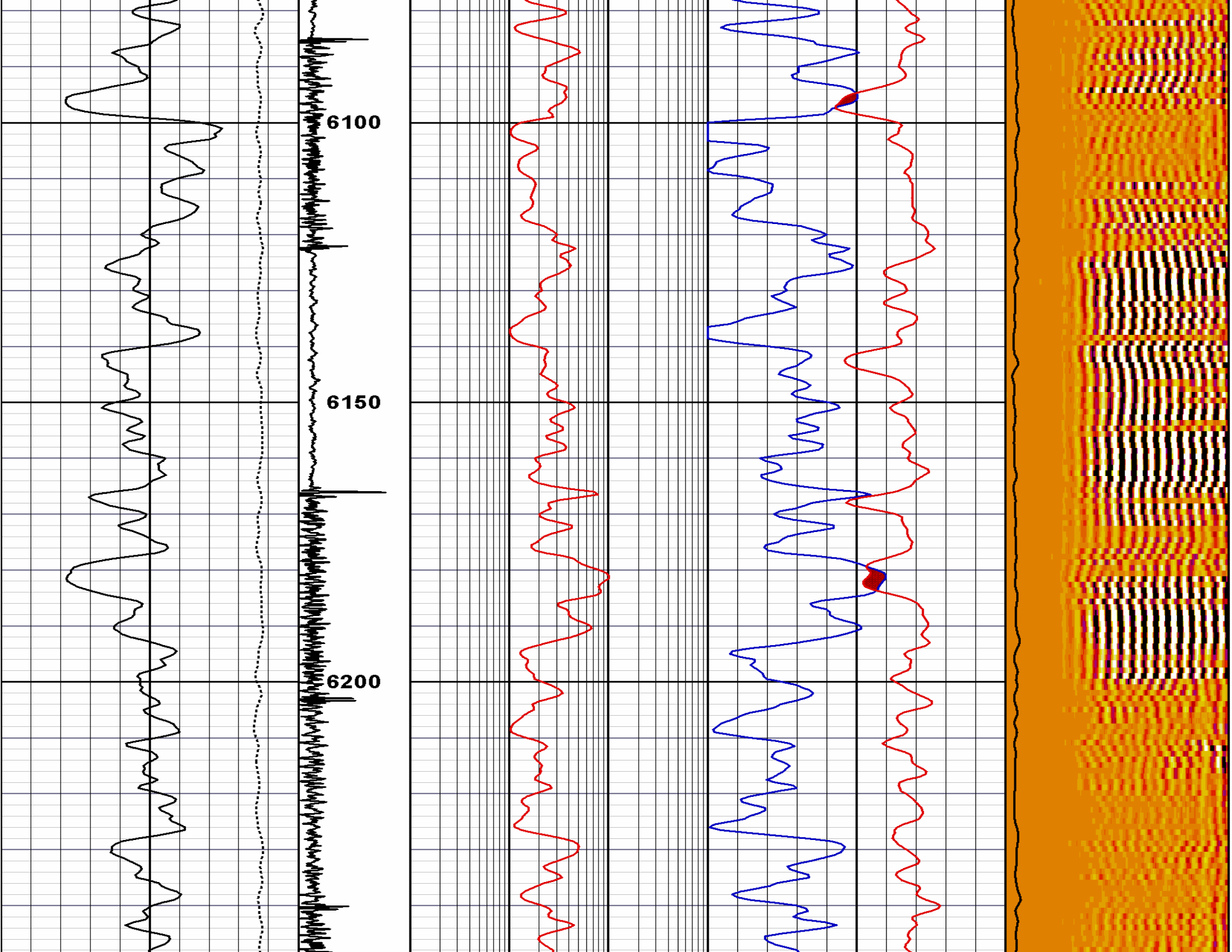


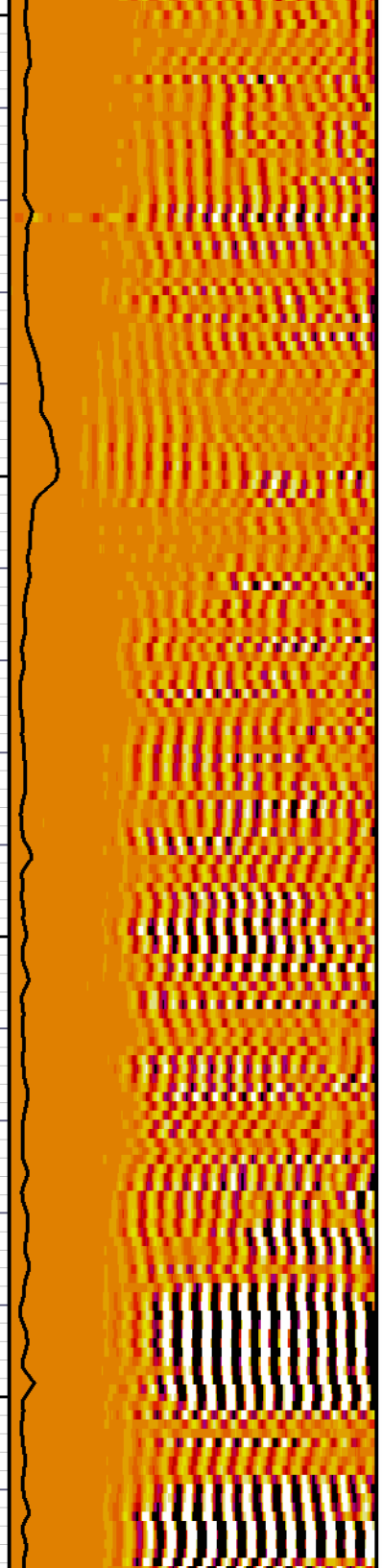
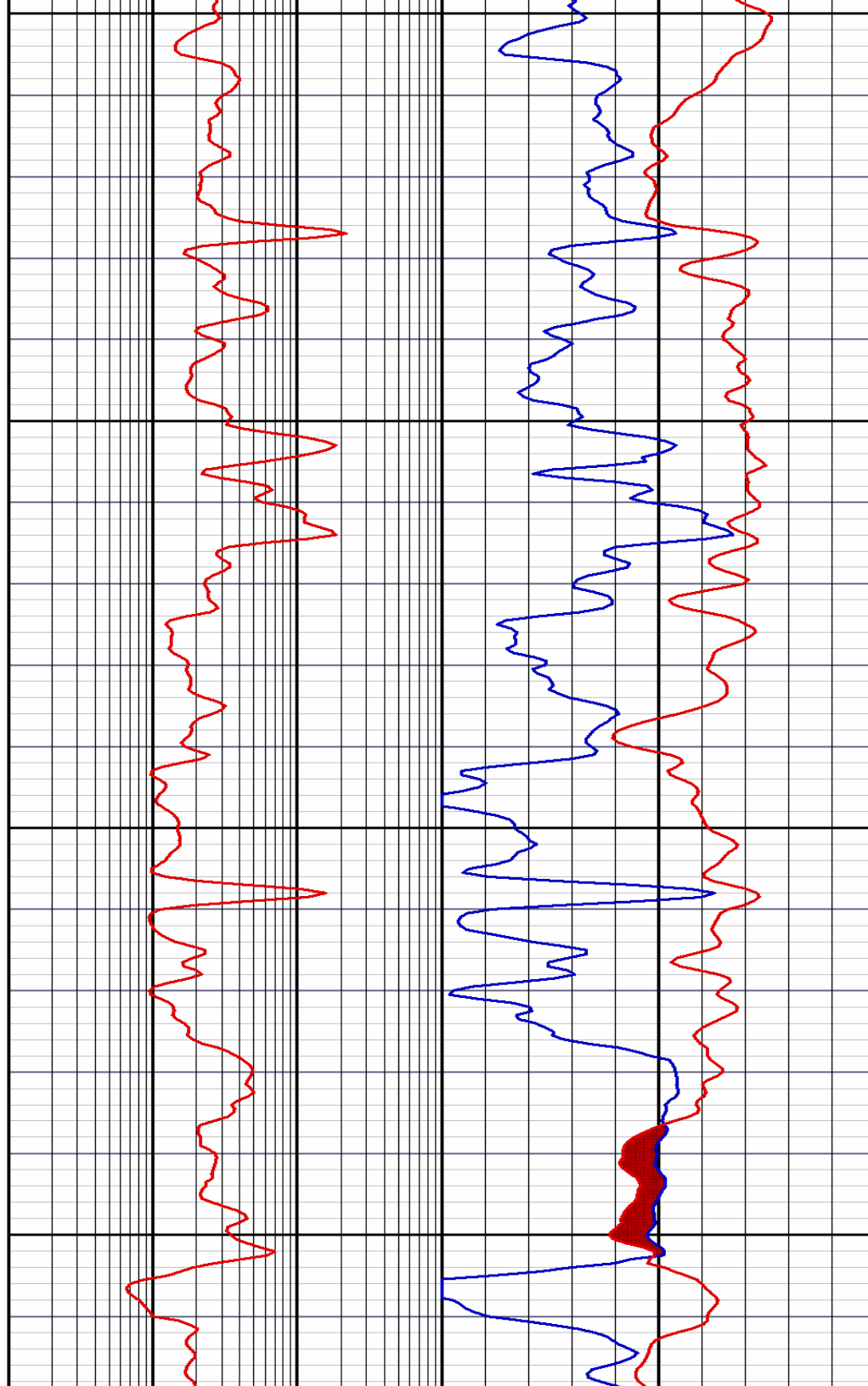
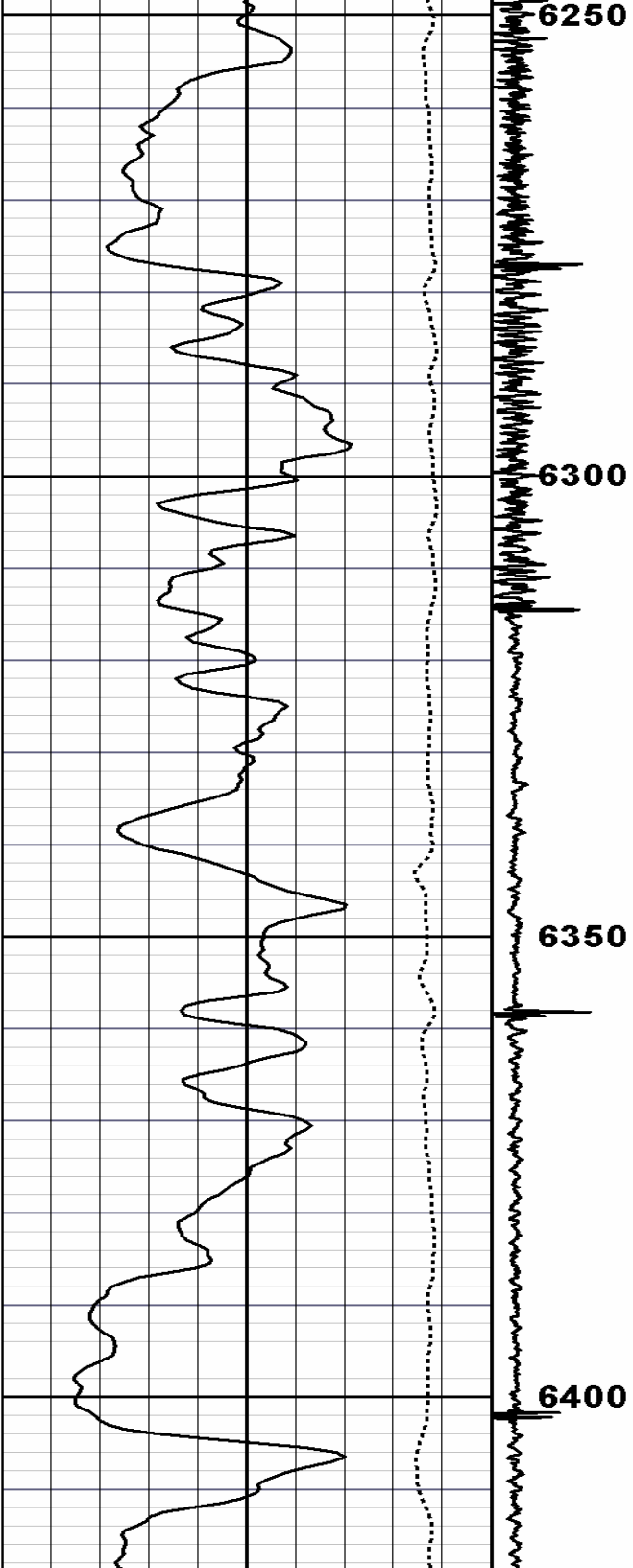


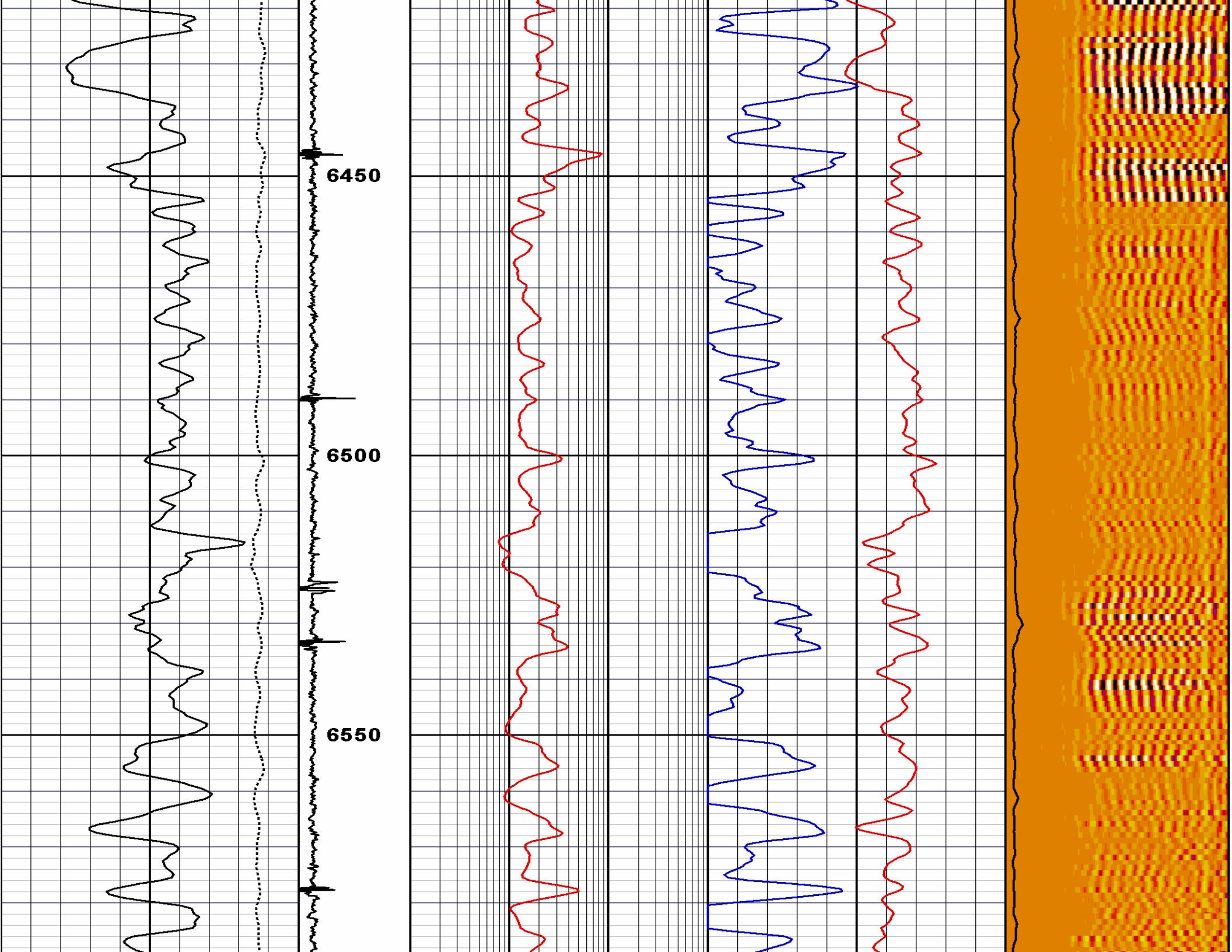


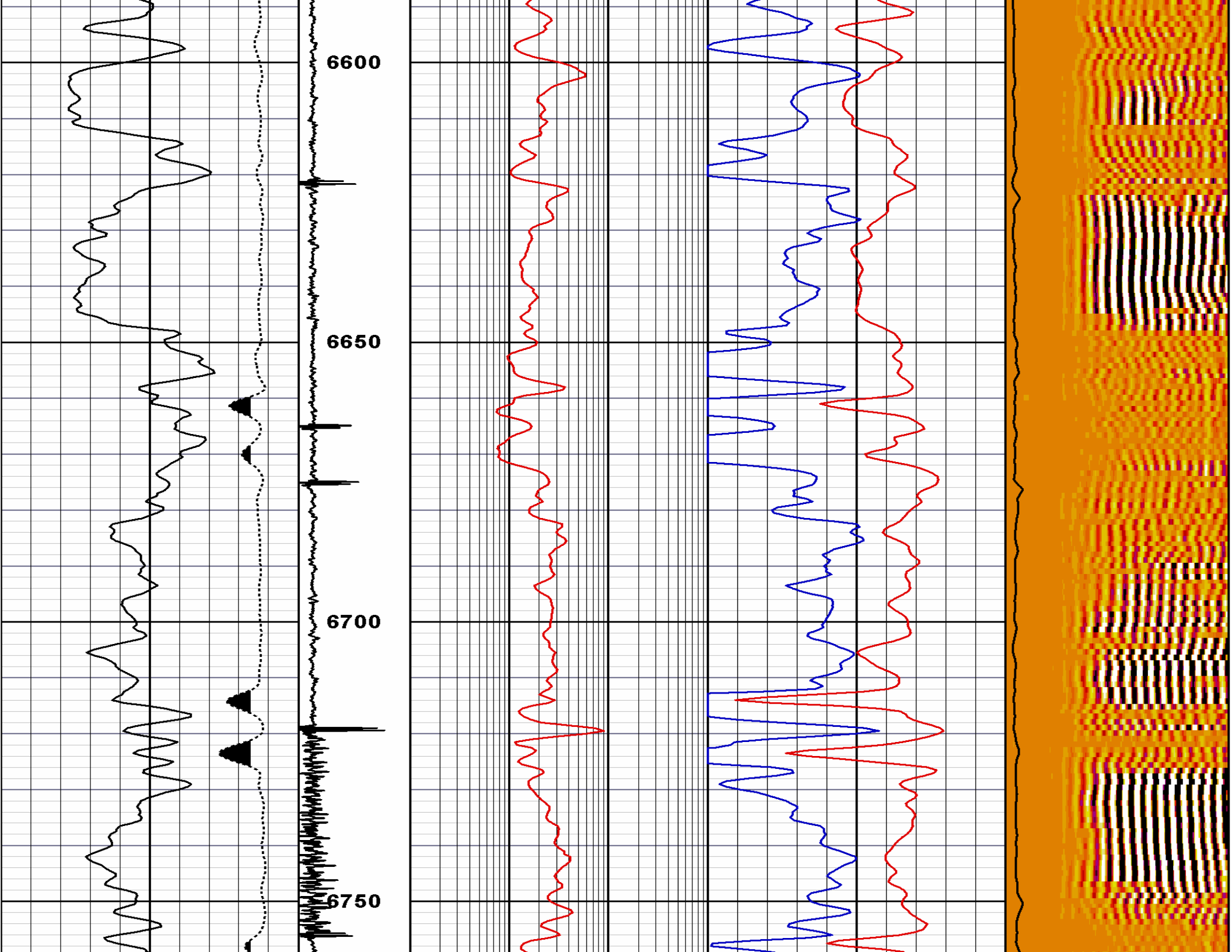




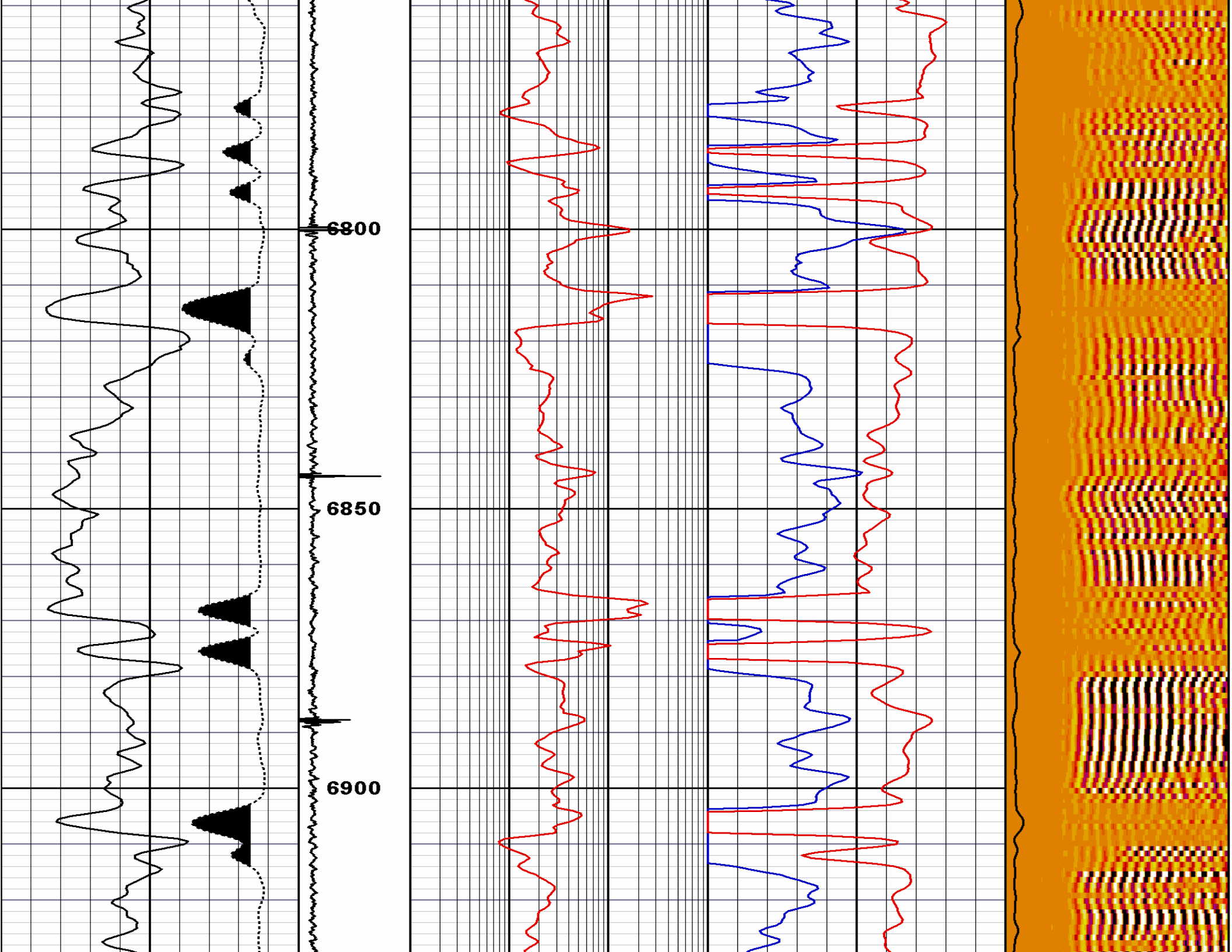


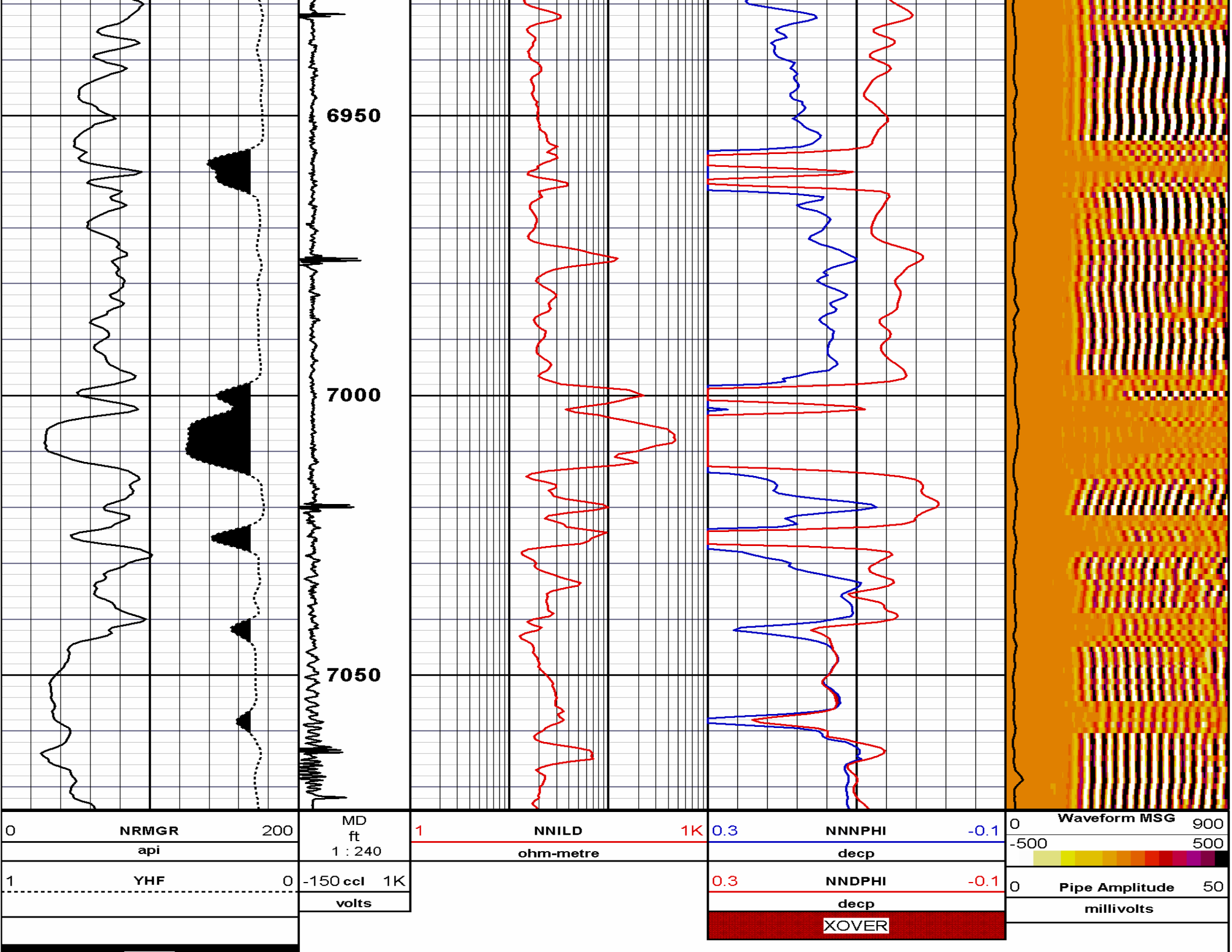












COAL			
COMPANY	URSA OPERATING CO, LLC.		
WELL	YATER 42B-18-07-95		
FIELD	PARCHUTE		
COUNTY	GARFIELD	STATE	CO
<b>HALLIBURTON</b>		RMTI NEURAL NETWORK TRIPLE COMBO	