

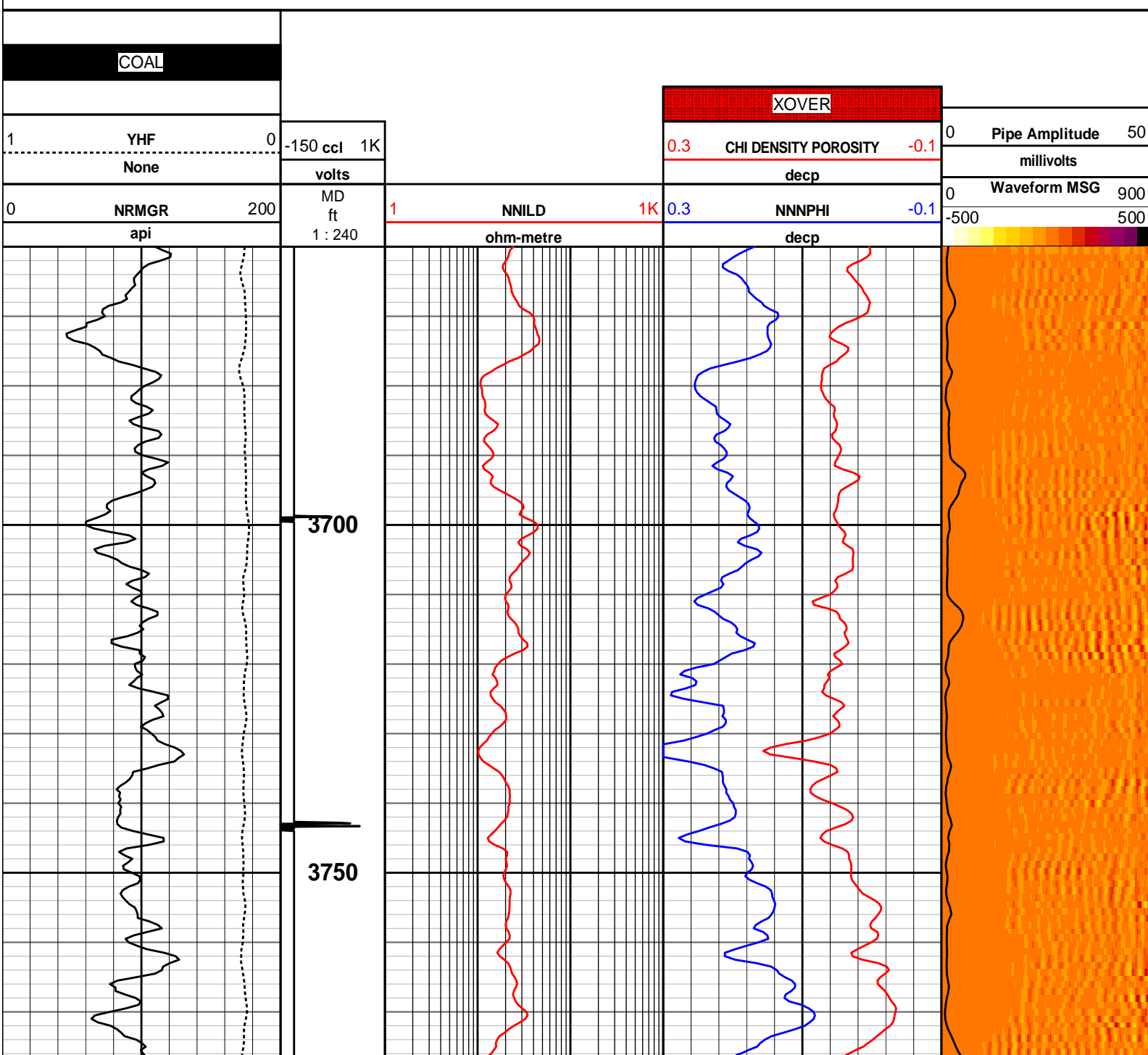
RMTI NEURAL NETWORK CHI TRIPLE COMBO

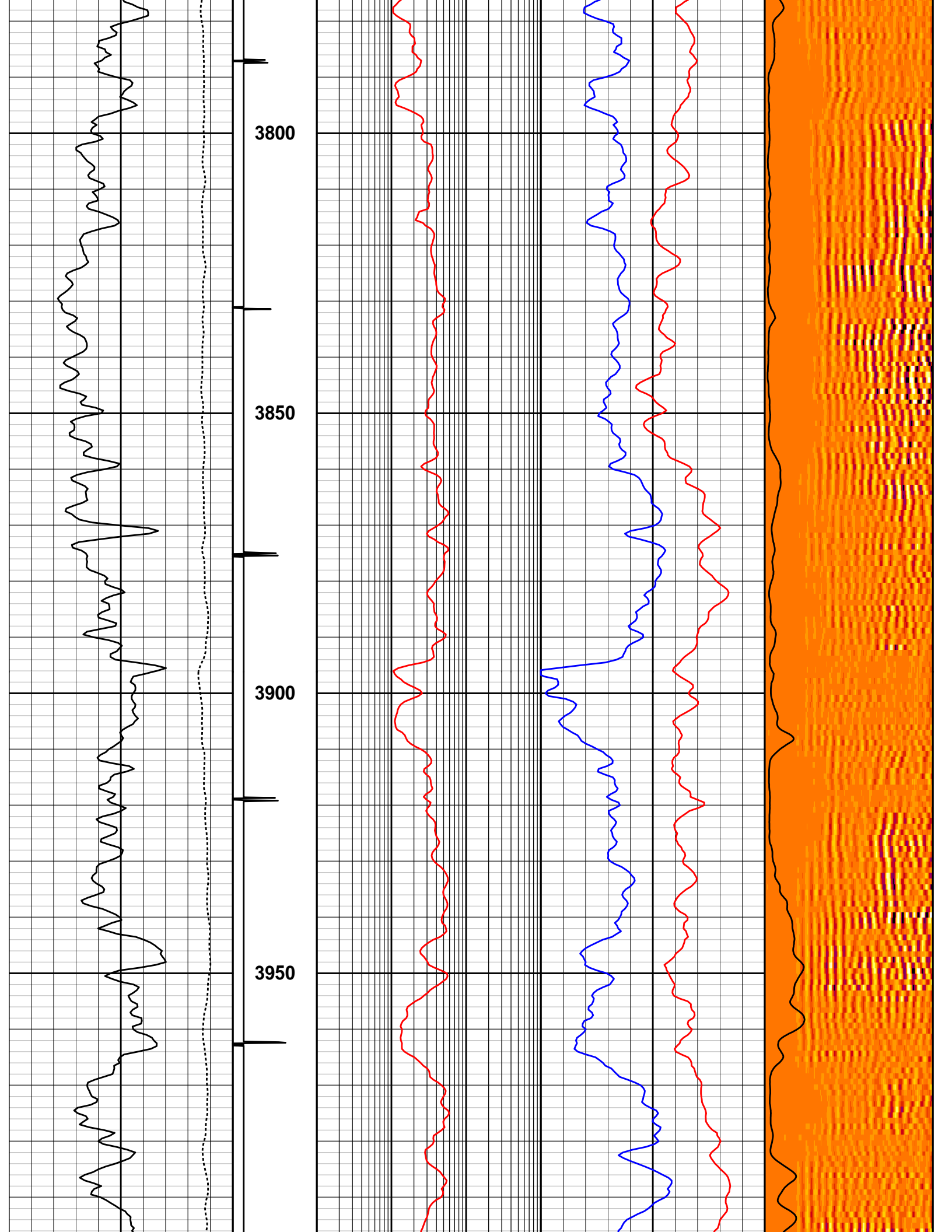
COMPANY	URSA OPERATING CO., LLC.
WELL	YATER 11B-17-07-95
FIELD/BLOCK/PARACHUTE	
COUNTY	GARFIELD
STATE	CO
Location	
SHL: 1792' FSL & 1128' FWL BHL: 392' FNL & 651' FWL SEC: 17 TWP: 7S RGE: 9SW	Elev.: K.B. 5536.00 ft D.F. 5535.00 ft G.L. 5519.00 ft
Date Processed 09/15/2015	Processed At DENVER FRS
Interval Processed 3660' - 7662'	Processed By Eric Hausel

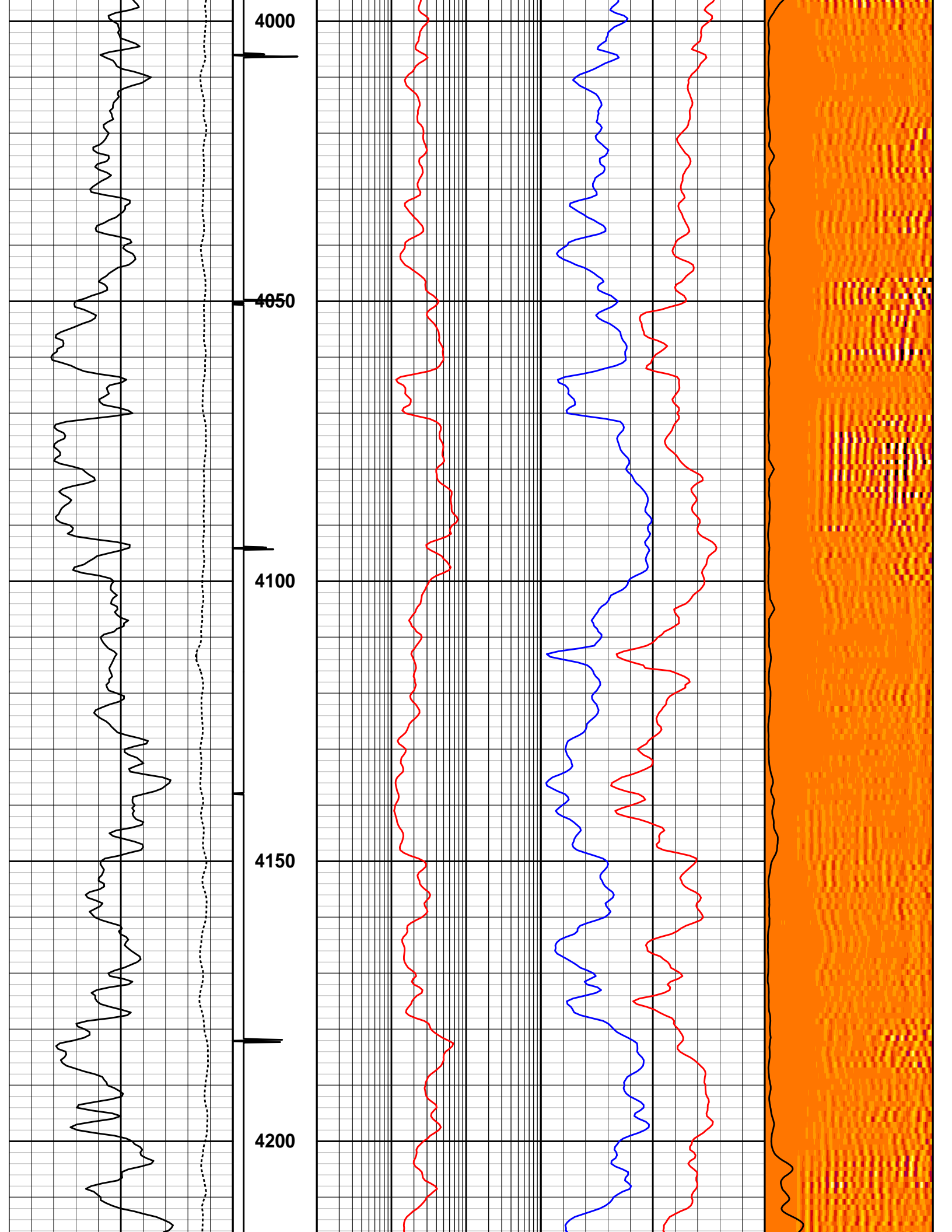
Fold here

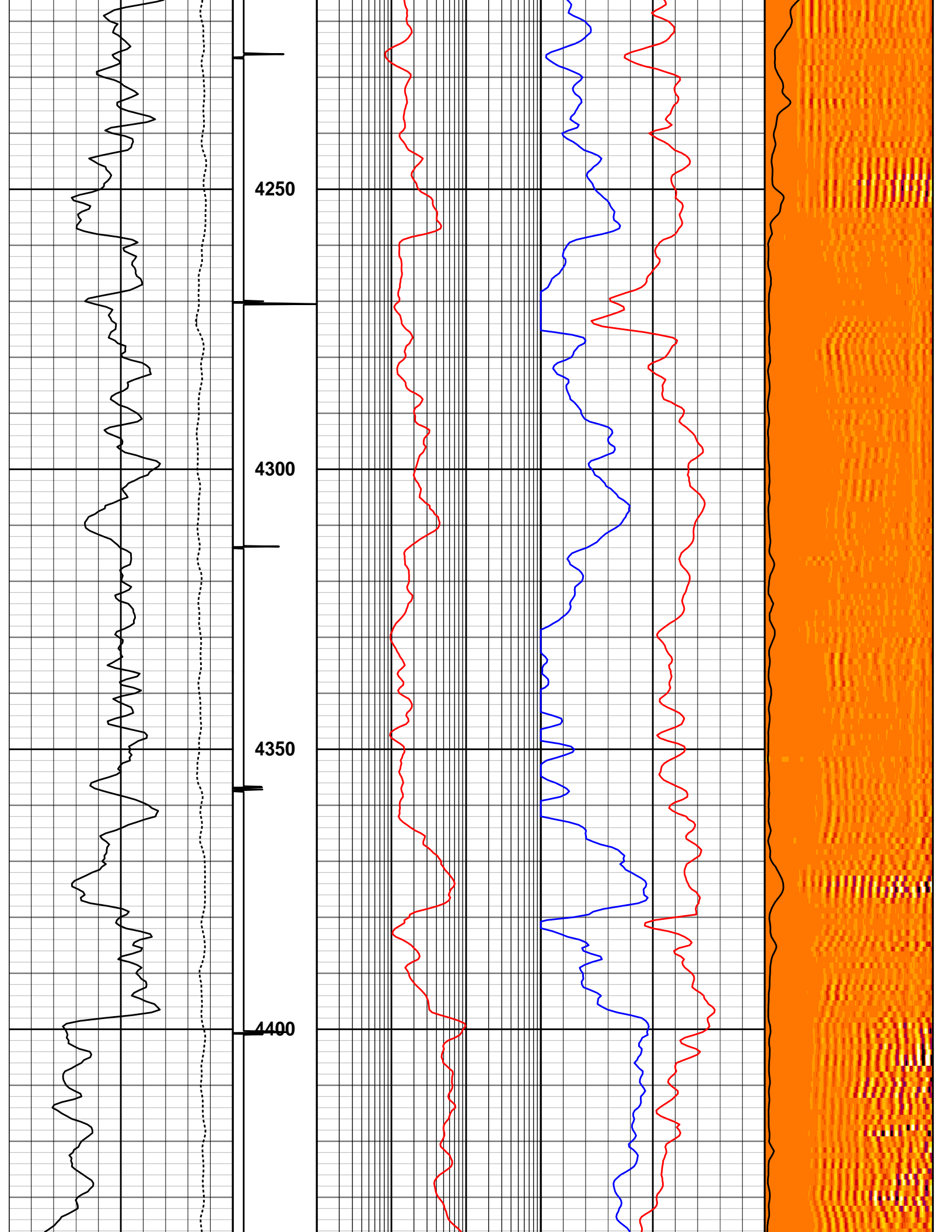
Service Ticket No.: 902696032	PGM Version:	
Logs Processed: CHI	Date Logged: 08/28/2015	Type Fluid In Hole: WATER
DIRECTIONAL INFORMATION		
Maximum Deviation @	KOP	@
Remarks: HES RMT LOG DATED: 28 AUG 2015 IS THE PRIMARY DEPTH REFERENCE FOR THIS WELL		
GR-RMT RAN IN COMBINATION.		
LOG INTERVALS PER CUSTOMER REQUEST.		
SHORT JOINTS @: 2945' - 2955', 6326' - 6336' AND 7212' - 7222'		
TRAINING WELL: YATER 12D 17-07-95		
NNDPHI COMPUTED FROM NNRHOB USING 2.68 g/cc MATRIX DENSITY AND 1.0 g/cc FLUID DENSITY		
GAMMA RAY FROM CBL USED ON PLOT		
API: 05-045-22825-0000		
*** THANK YOU FOR CHOOSING HALLIBURTON ENERGY SERVICES ***		
HALLIBURTON DOES NOT GUARANTEE THE ACCURACY OF ANY INTERPRETATION OF THE LOG DATA, CONVERSION OF LOG DATA TO PHYSICAL ROCK PARAMETERS OR RECOMMENDATIONS WHICH MAY BE GIVEN BY HALLIBURTON PERSONNEL OR WHICH APPEAR ON THE LOG OR IN ANY OTHER FORM. ANY USER OF SUCH DATA, INTERPRETATIONS, CONVERSIONS, OR RECOMMENDATIONS AGREES THAT HALLIBURTON IS NOT RESPONSIBLE EXCEPT WHERE DUE TO GROSS NEGLIGENCE OR WILLFUL MISCONDUCT, FOR ANY LOSS, DAMAGES, OR EXPENSES RESULTING FROM THE USE THEREOF.		
HALLIBURTON		

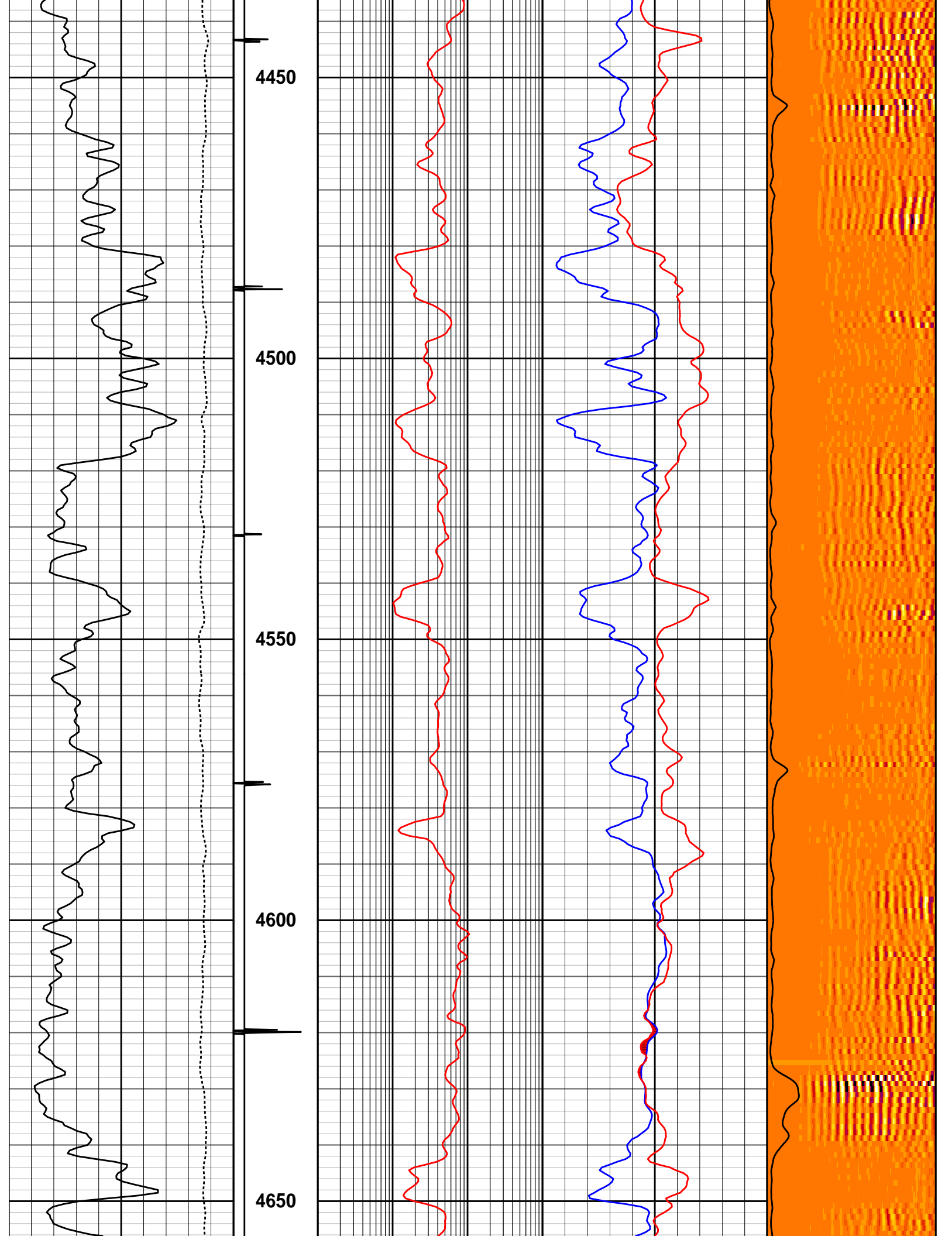
Track 4
AMP (mV) 3' CBL Amplitude
WMSG 5' CBL Waveform

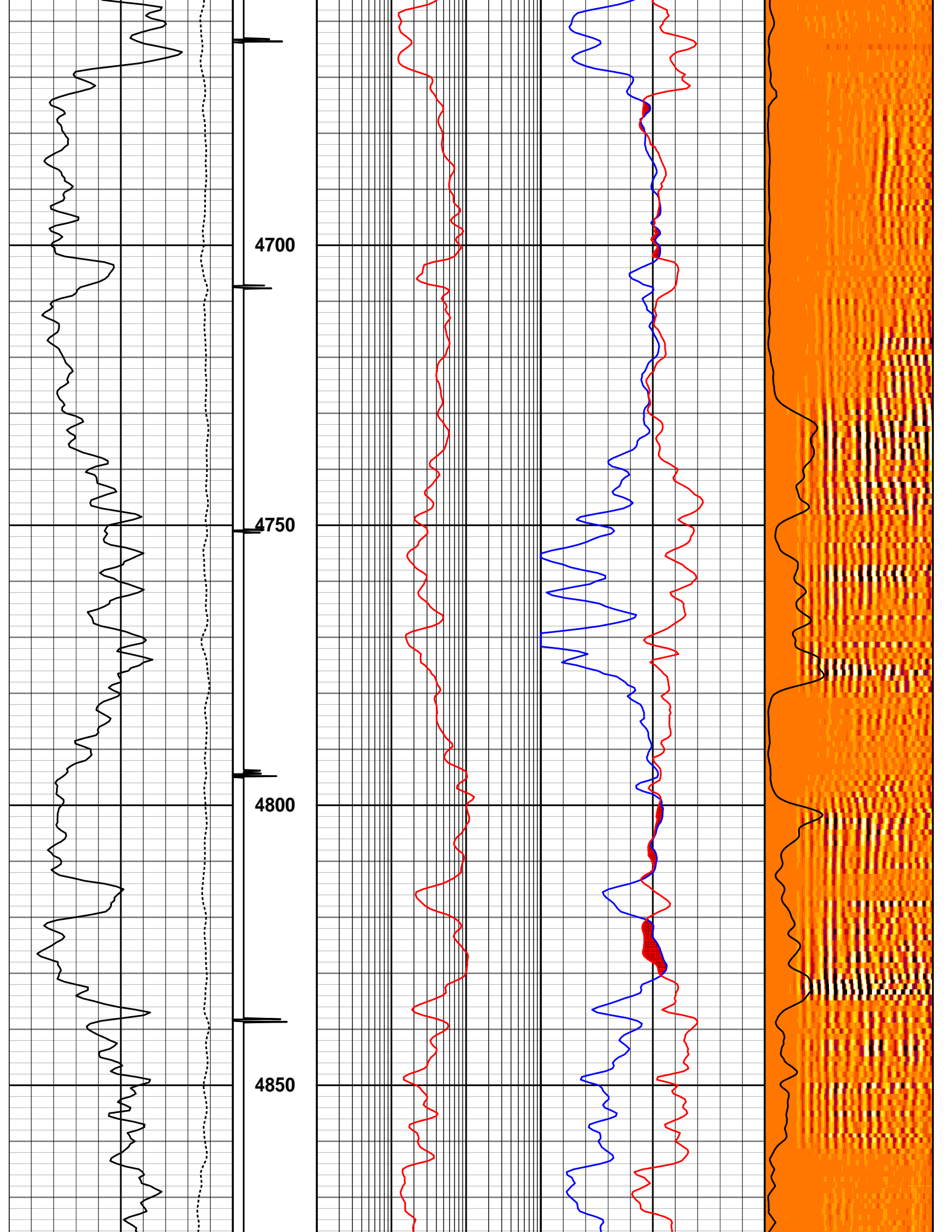


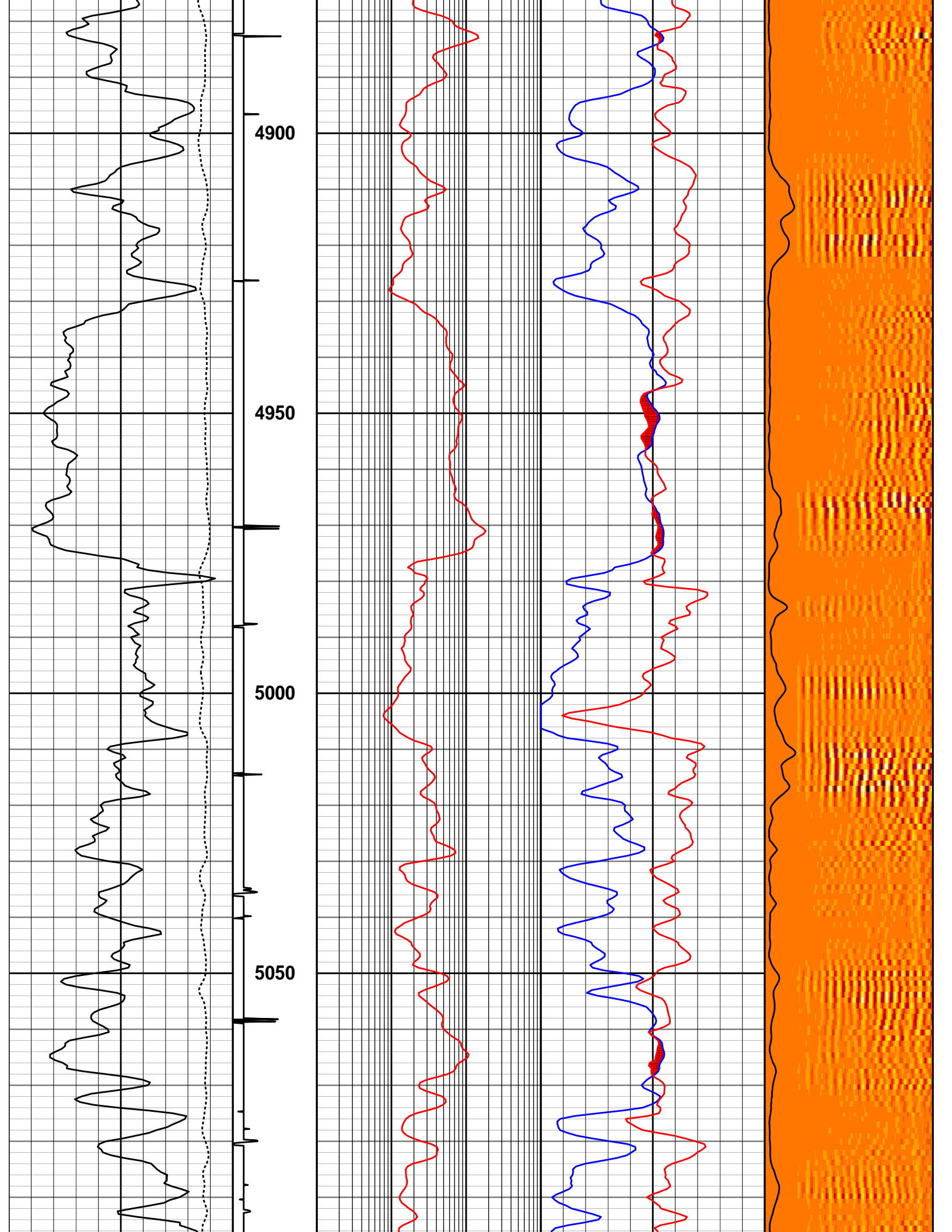


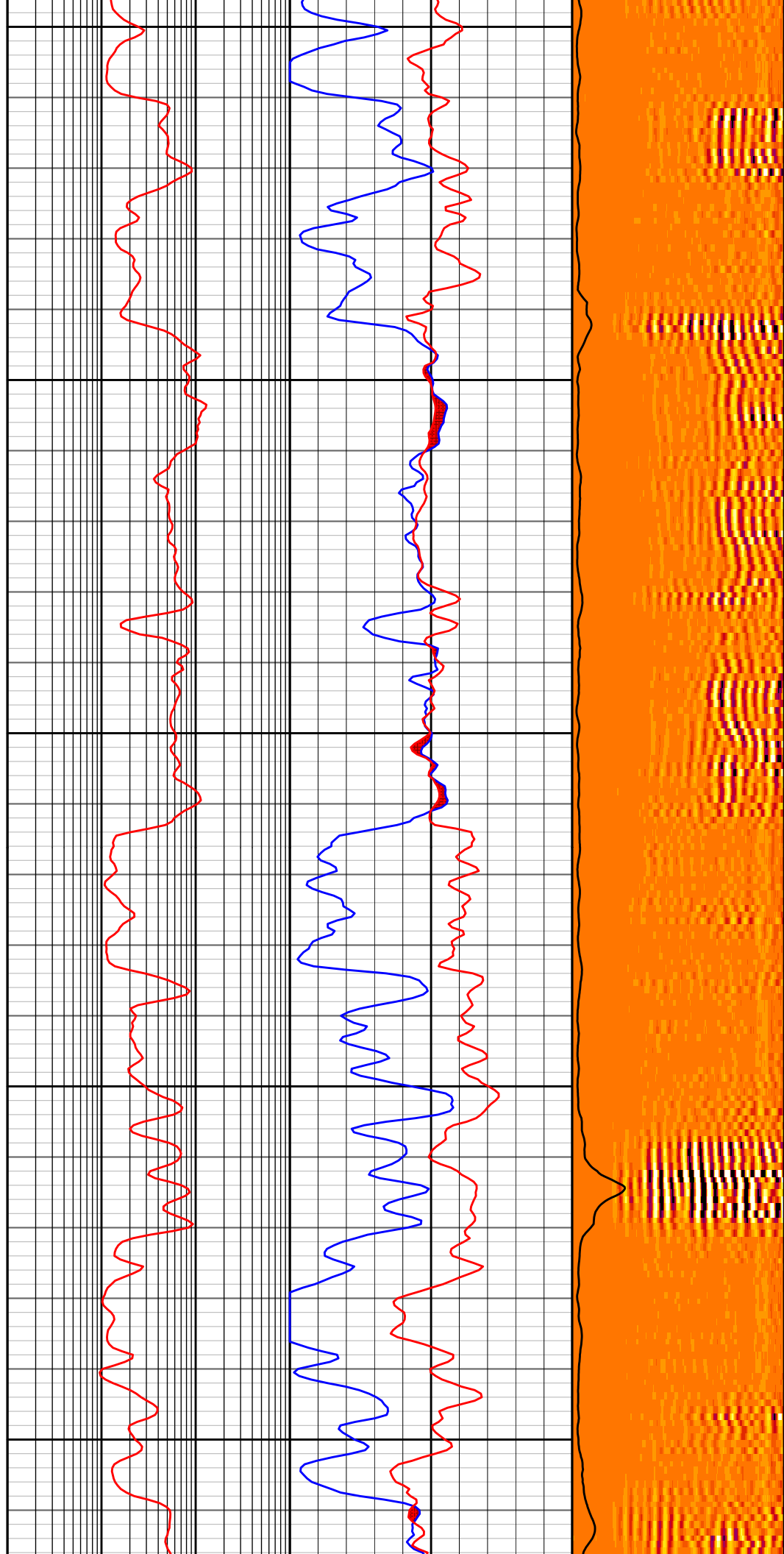
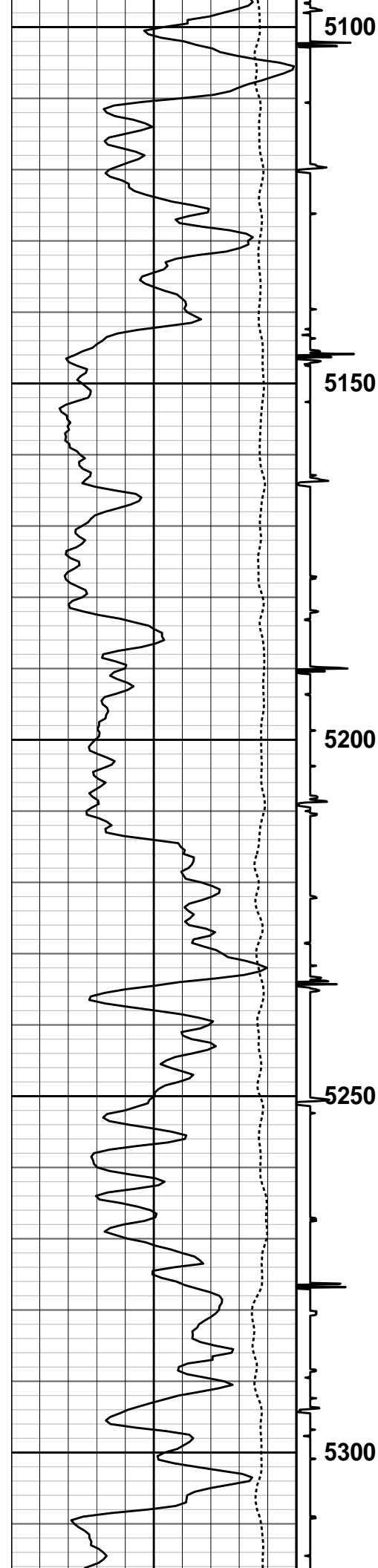


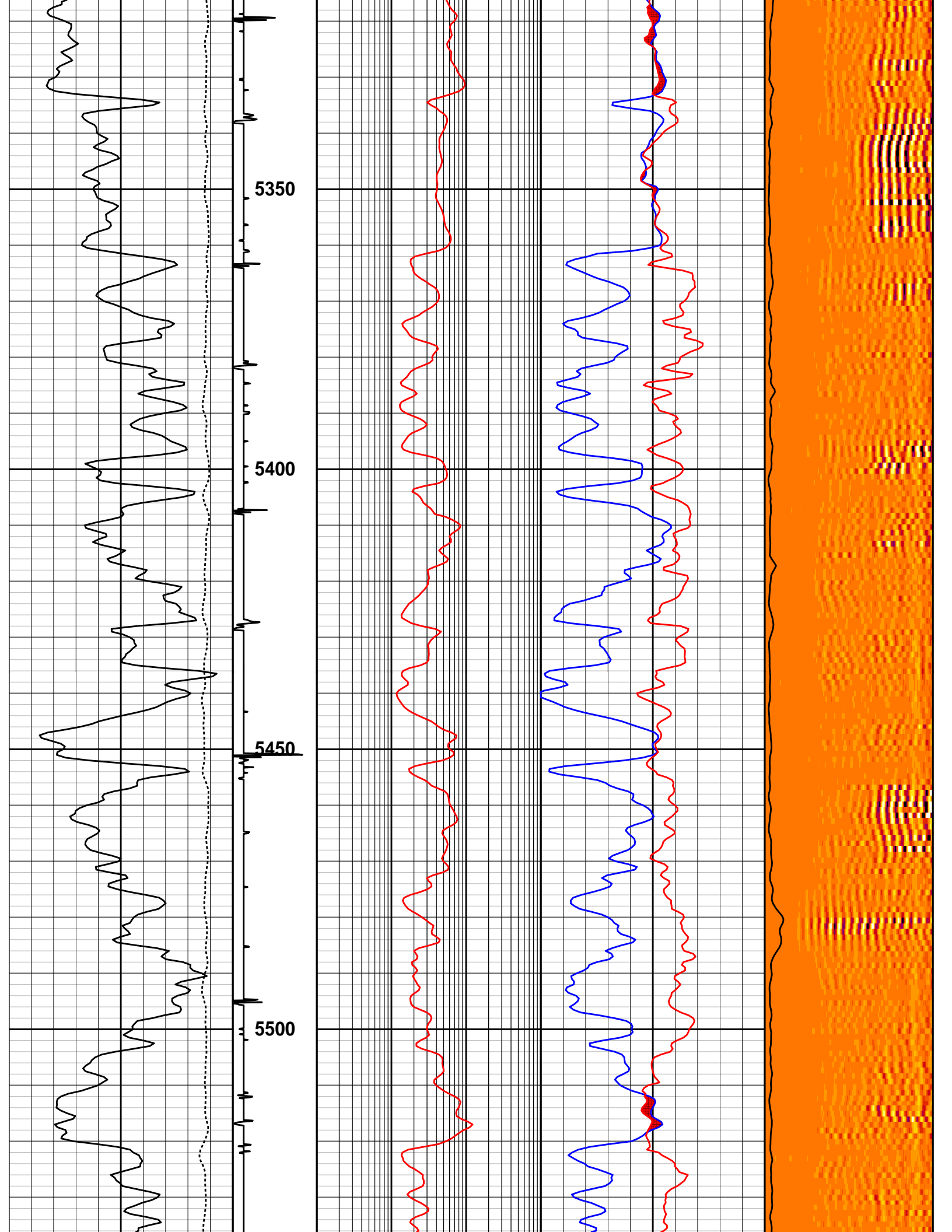


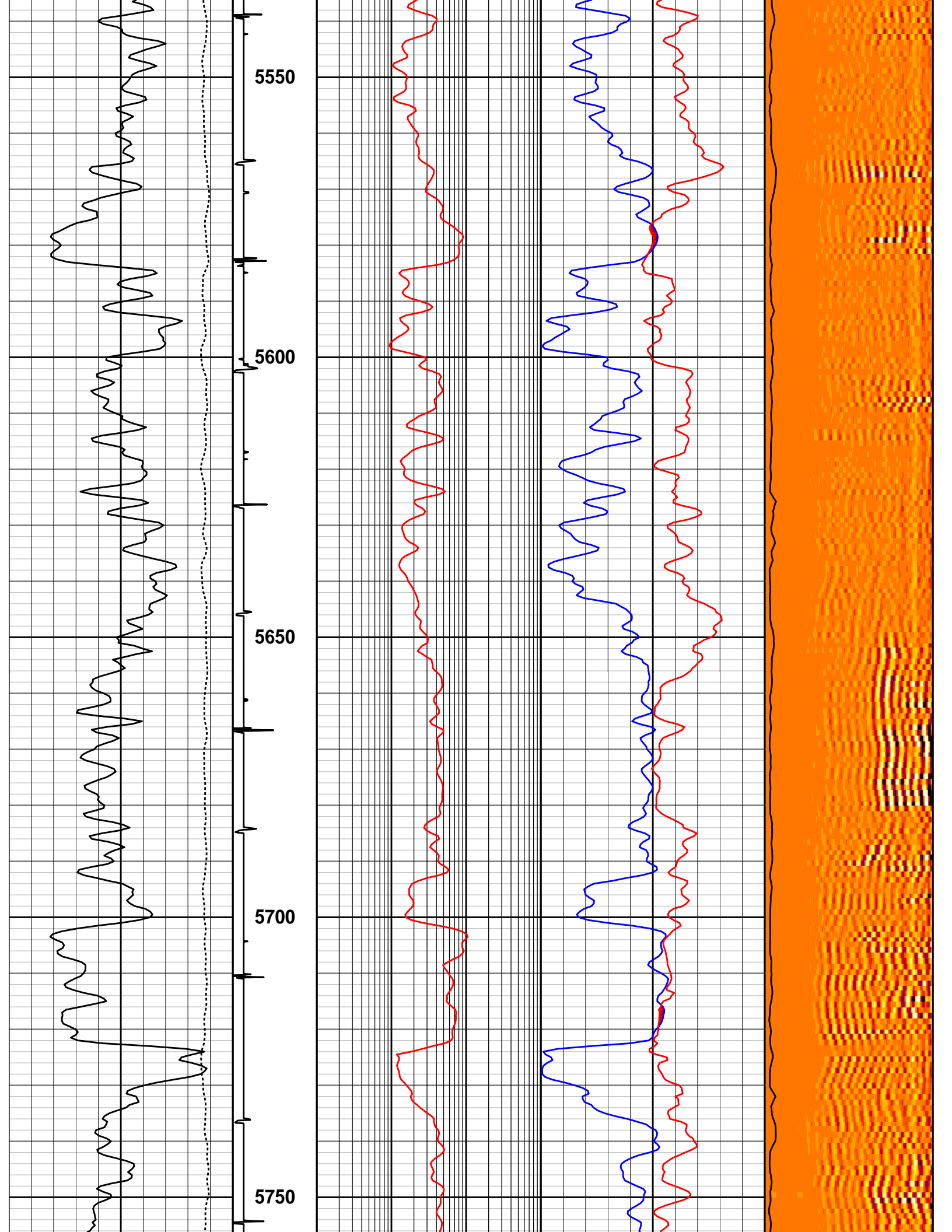


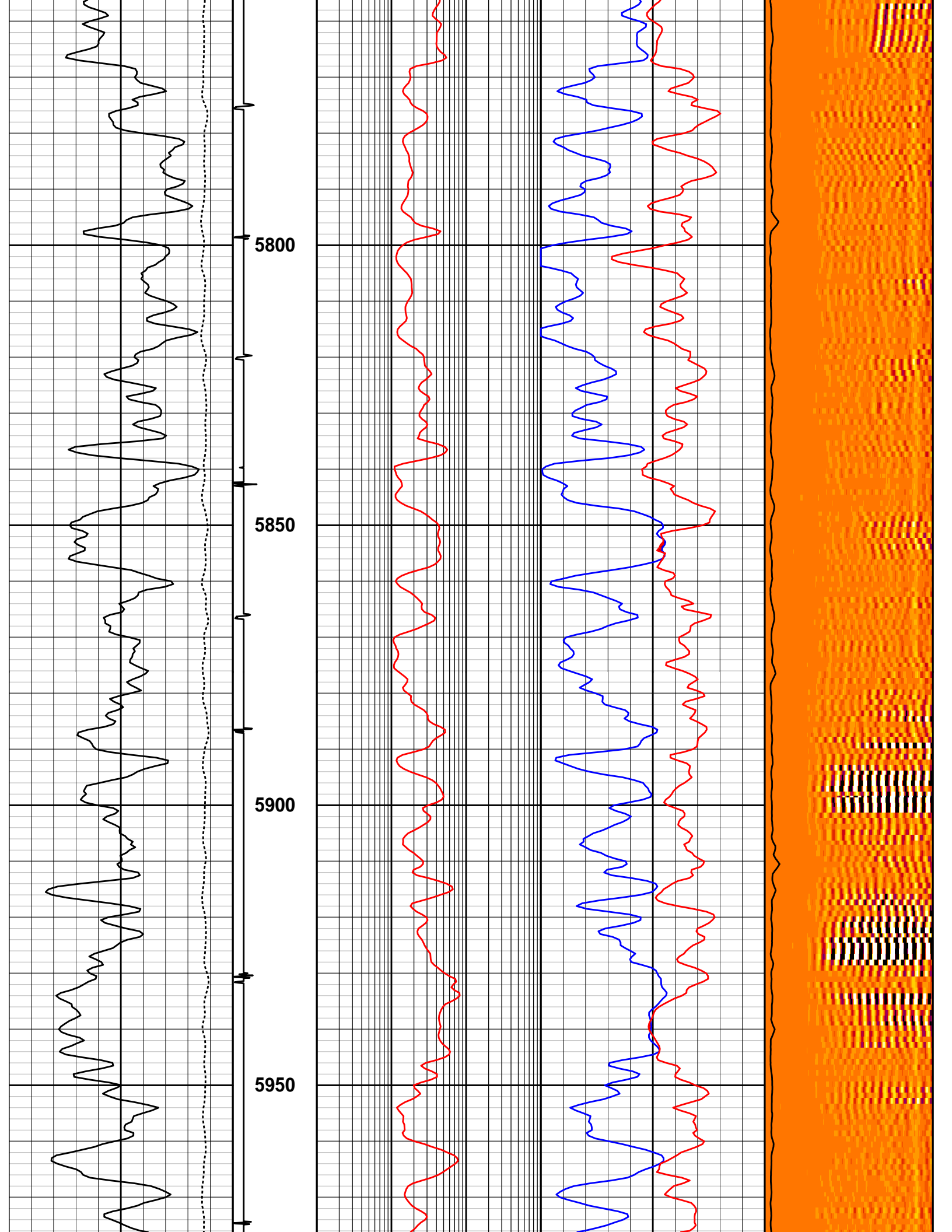


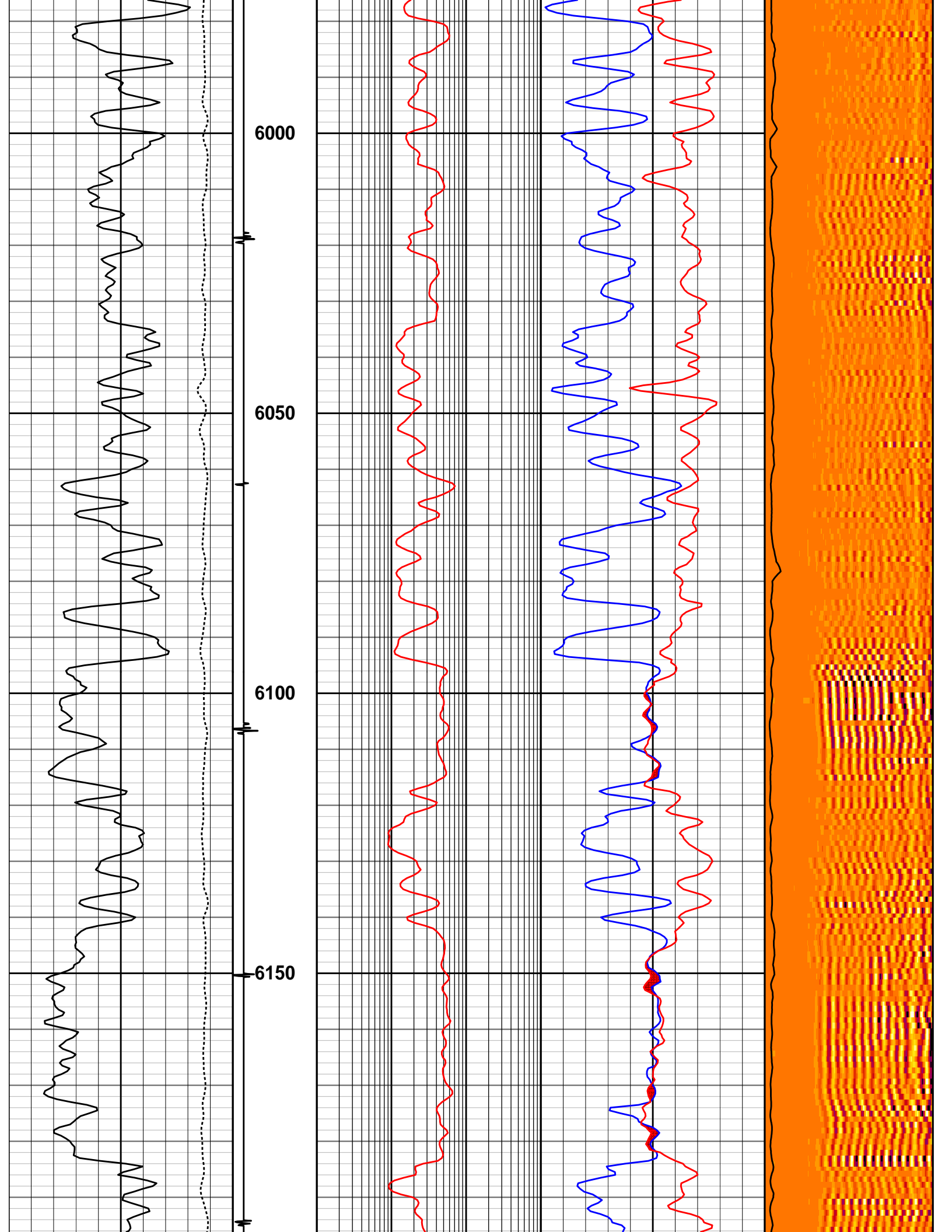


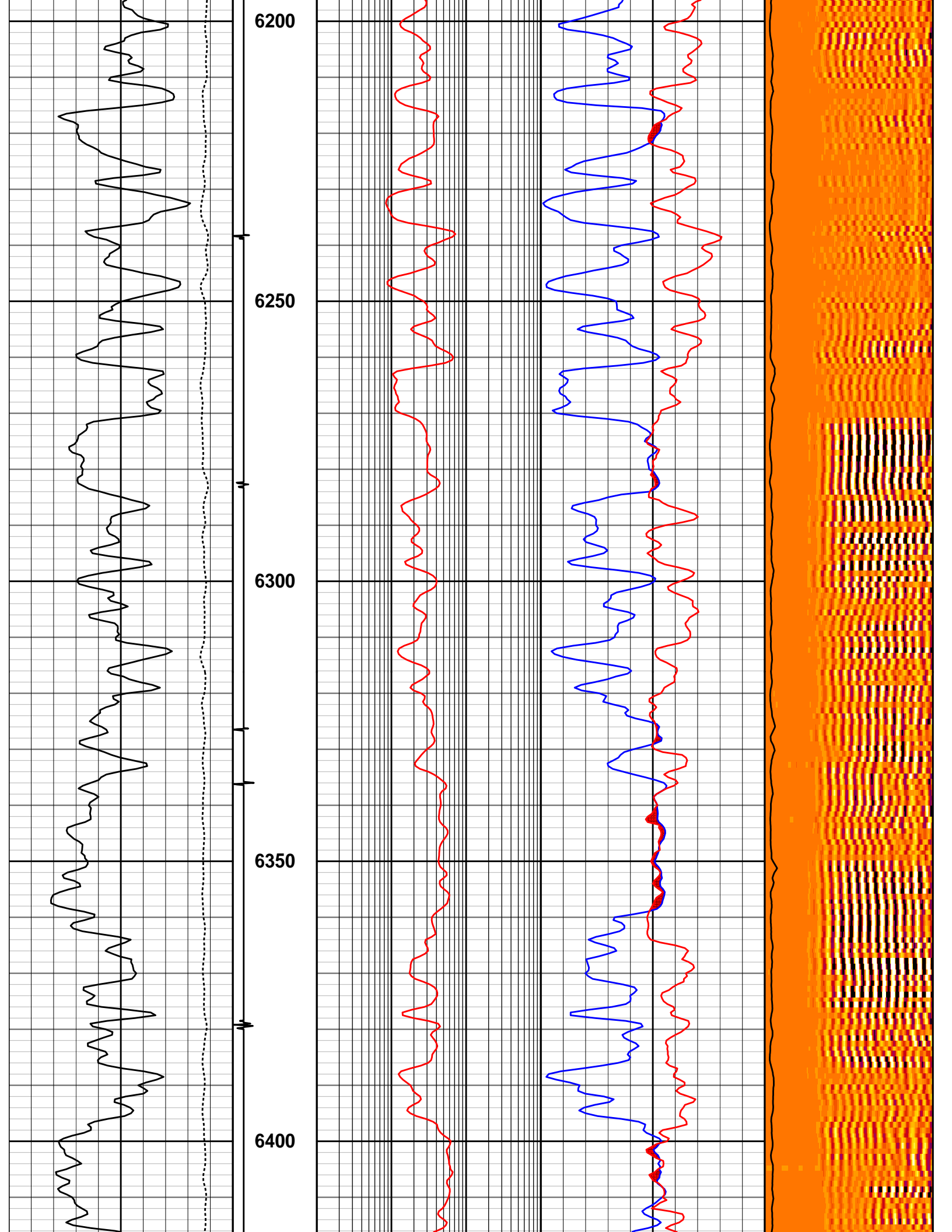


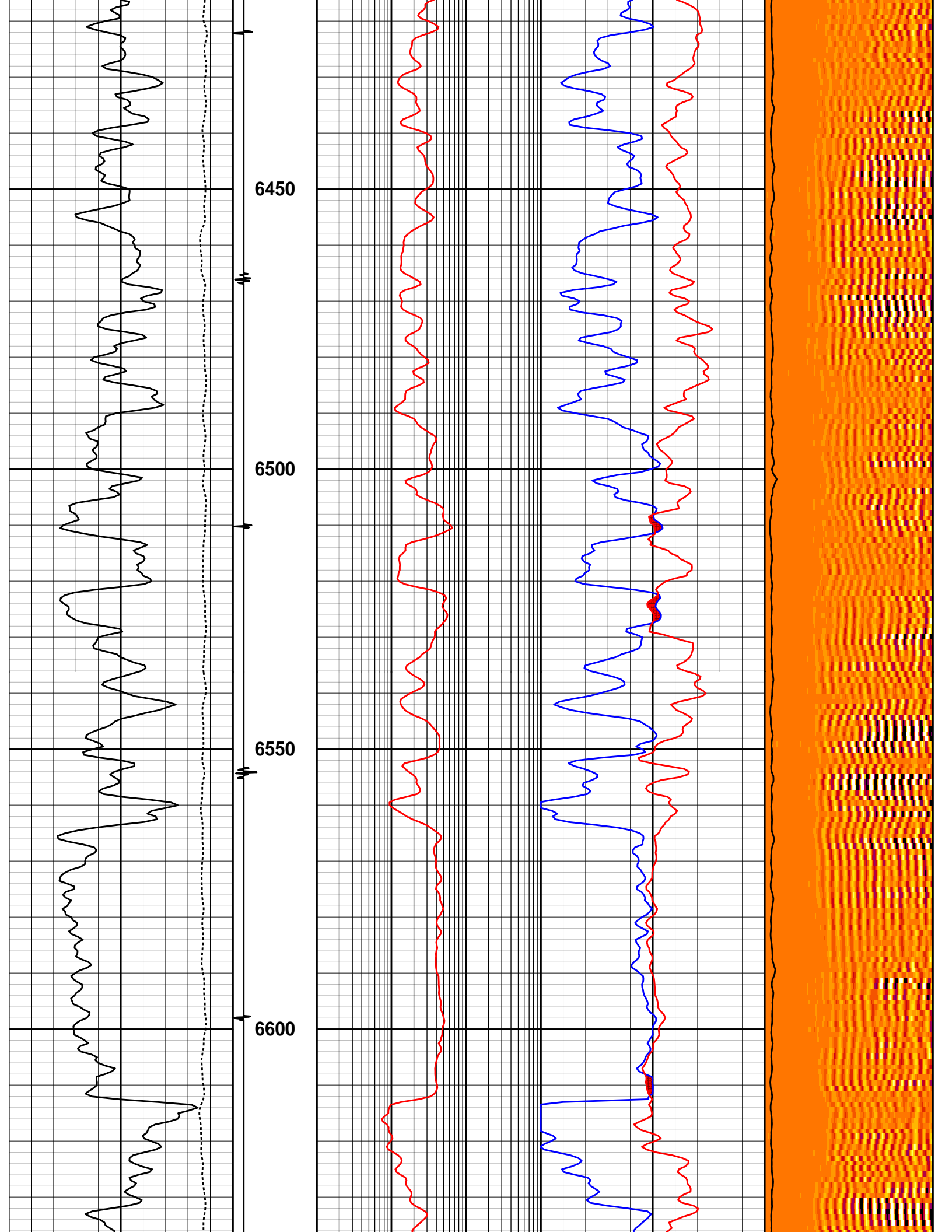


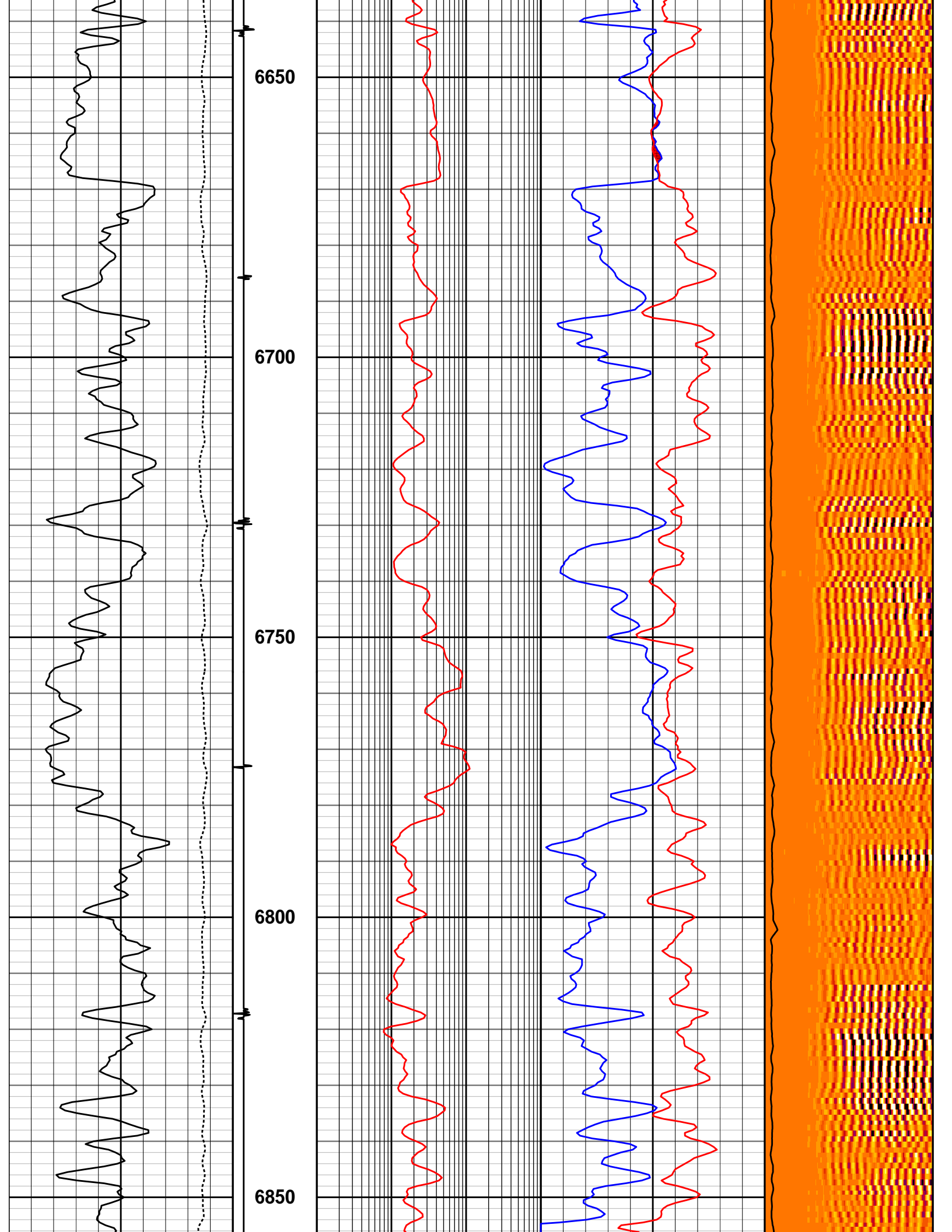


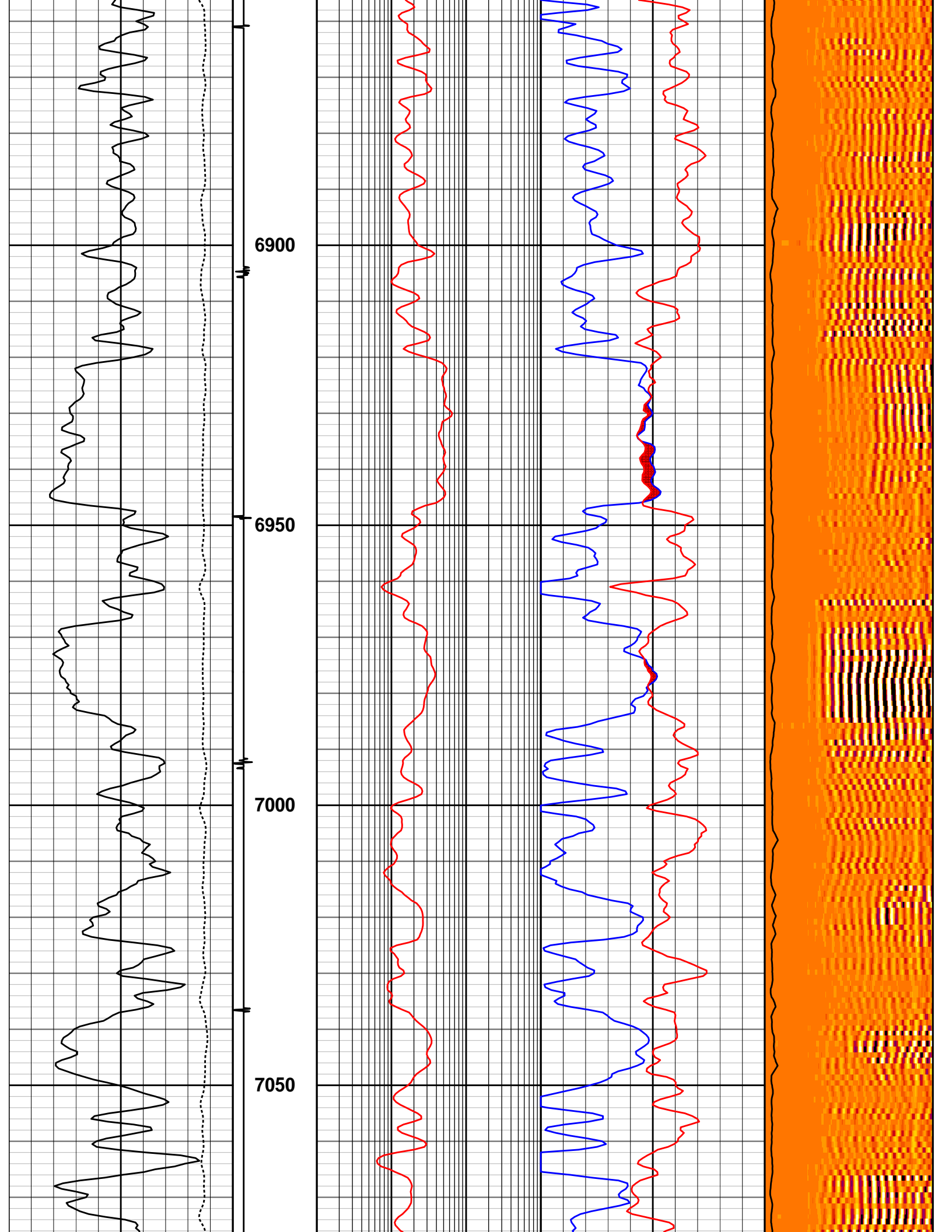


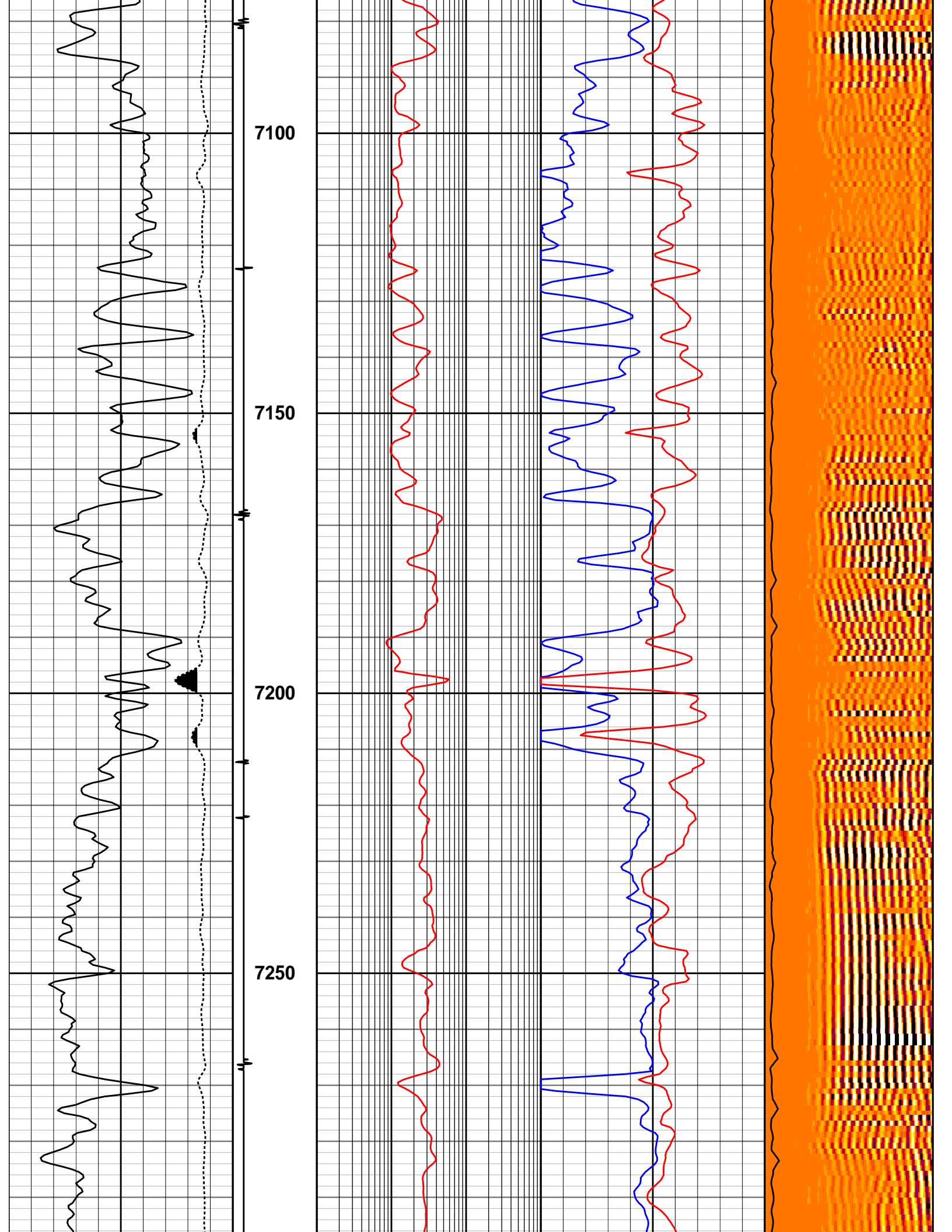


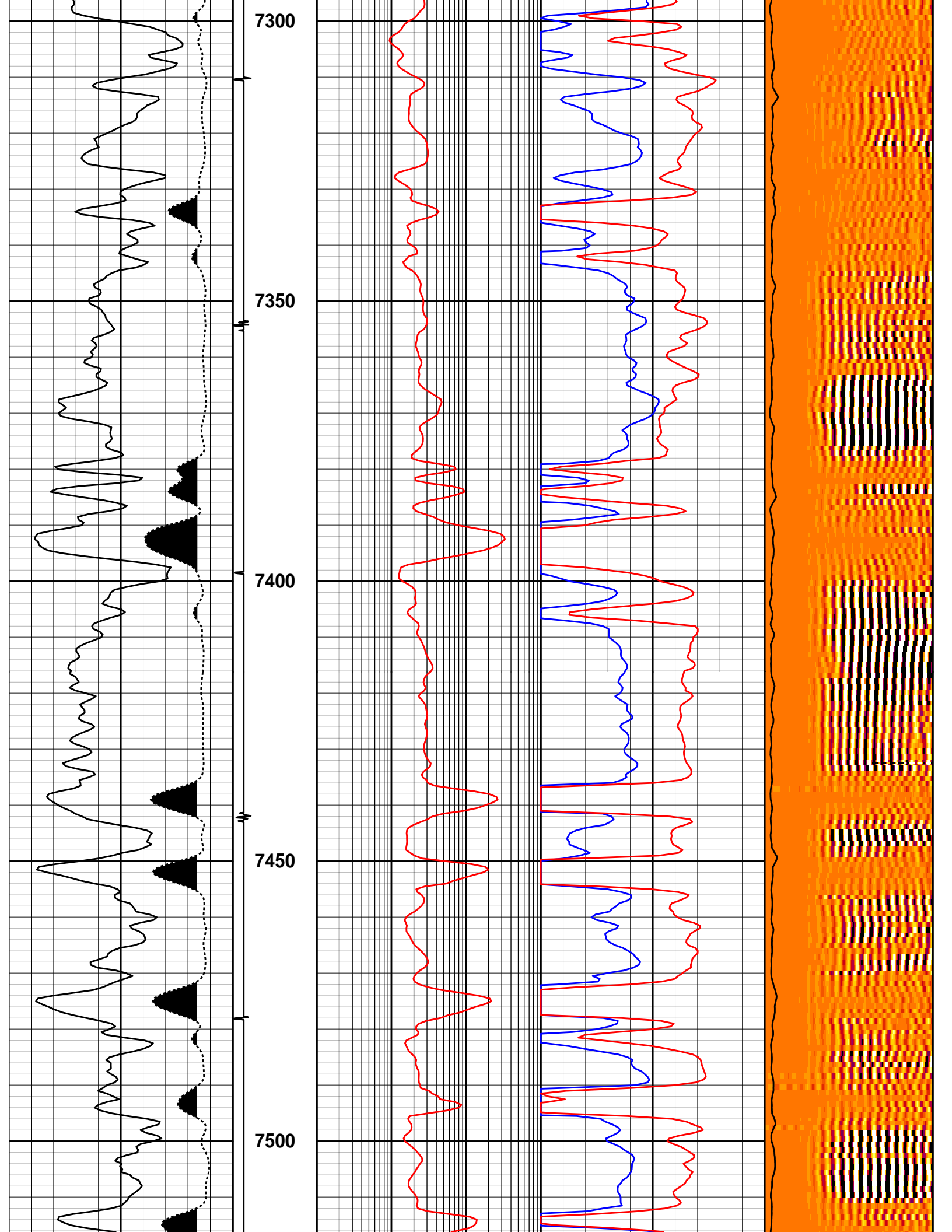


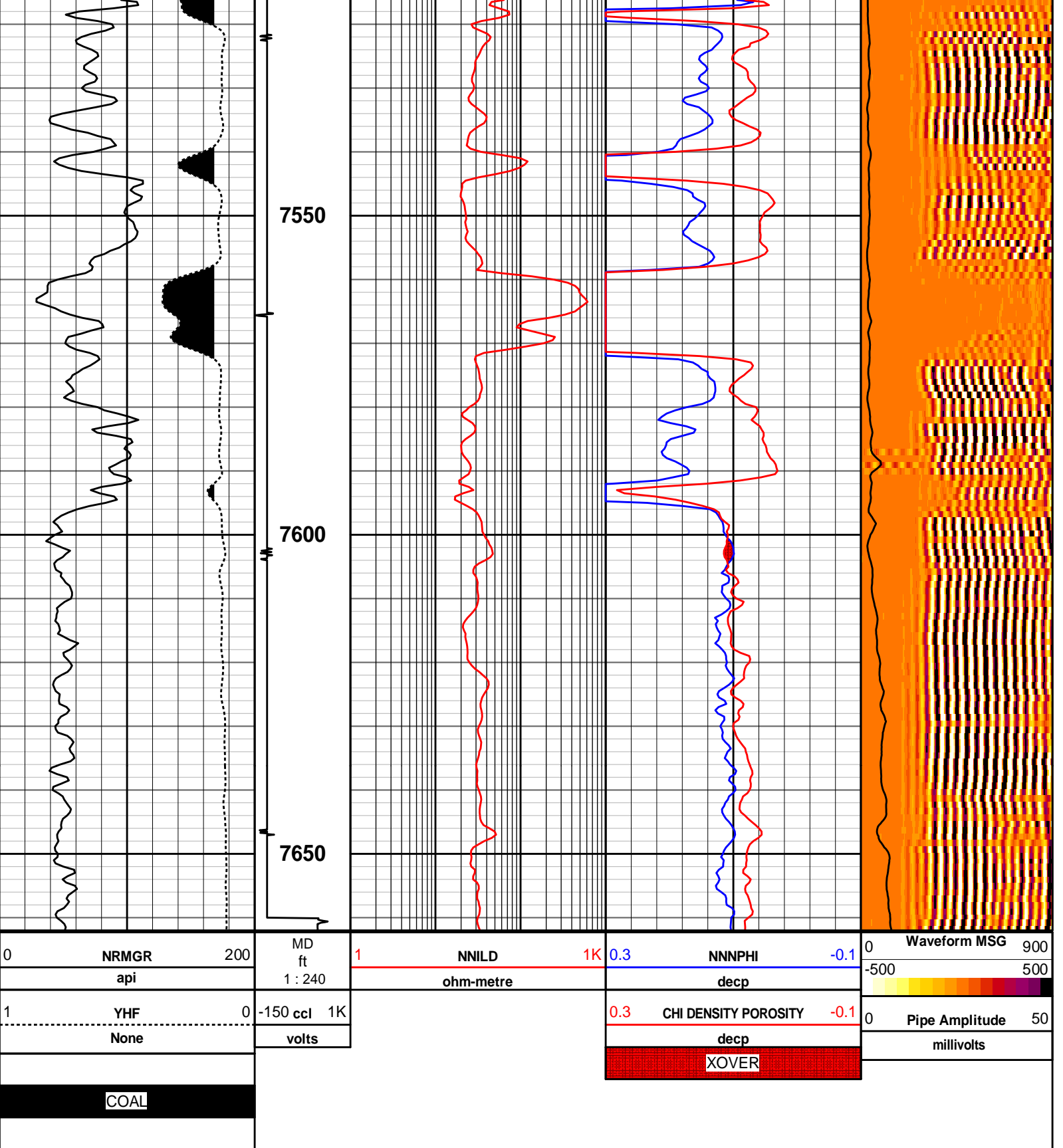












COMPANY	URSA OPERATING CO., LLC.		
WELL	YATER 11B-17-07-95		
FIELD	PARACHUTE		
COUNTY	GARFIELD	STATE	CO
HALLIBURTON		RMTI NEURAL NETWORK CHI TRIPLE COMBO	

TRIPLE COMBO

TRIPLE COMBO