

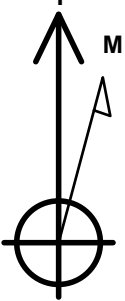
Bayswater Exploration & Production, LLC

Well Name: Wilkinson K-12HC

Surface Location: Wilkinson 1-P Pad Sec.1-T6N-R65W
North American Datum 1983 , US State Plane 1983 , Colorado Northern Zone
Ground Elevation: 4774.0
+N/-S +E/-W Northing Easting Latitude Longitude Slot
0.0 0.0 1429421.88 3244953.87 40.508824 -104.619057
RKB - 22.5' WELL @ 4796.5ft (RKB - 22.5')

WELLBORE TARGET DETAILS

Name	TVD	+N/-S	+E/-W	Shape
SHL 316'FSL, 450'FWL, SEC.1	1.0	0.0	0.0	Point
BHL 470'FSL, 2285'FWL, SEC.12	7127.5	-5173.2	1774.8	Point
LPL 310'FNL, 2285'FWL, SEC.12	7141.5	-672.5	1828.9	Point

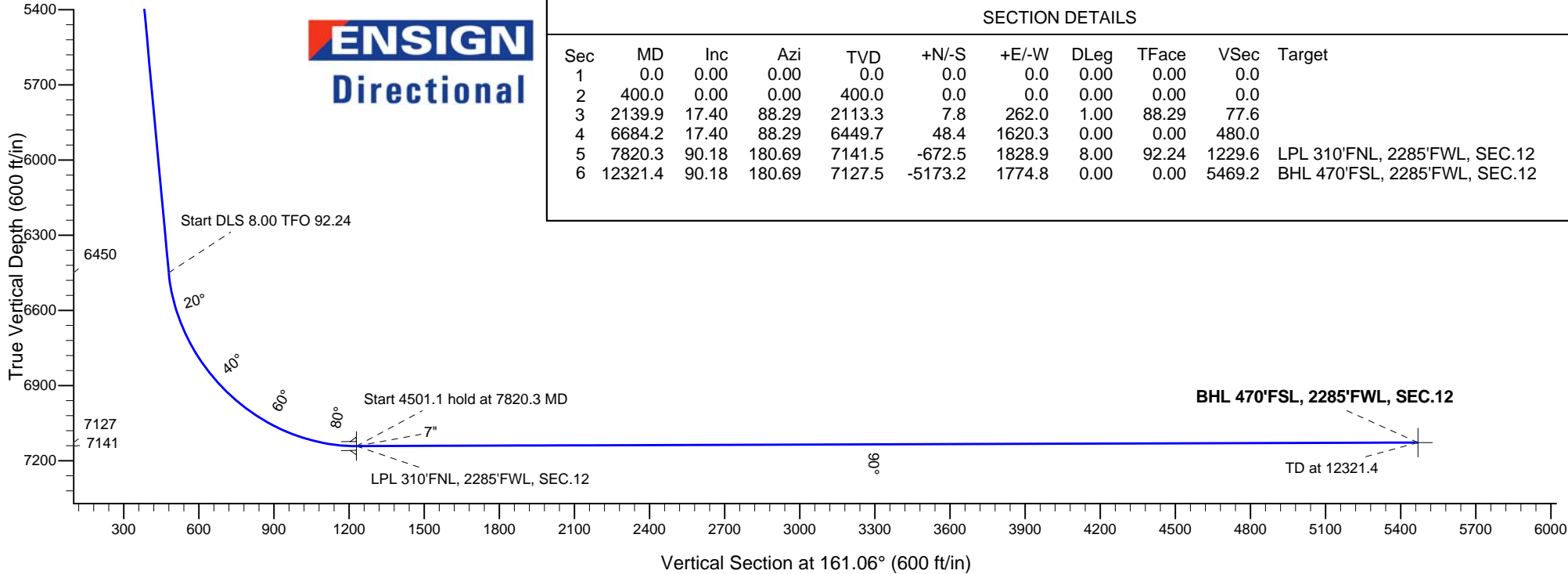
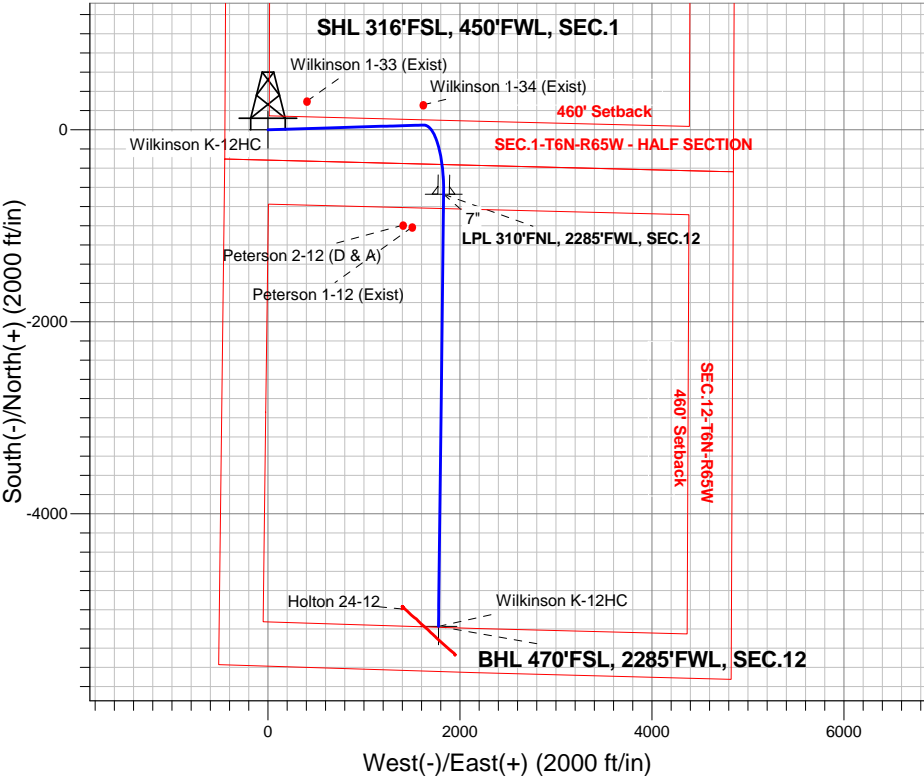


Azimuths to True North
Magnetic North: 8.24°
Magnetic Field
Strength: 52767.9nT
Dip Angle: 67.02°
Date: 8/3/2015
Model: IGRF2010

Wilkinson 1-P Pad Sec.1-T6N-R65W
Wilkinson K-12HC
Plan #1 (7-29-15)
7:04, August 03 2015

ANNOTATIONS

TVD	MD	Annotation
400.0	400.0	KOP - Start Build 1.00
2113.3	2139.9	Start 4544.3 hold at 2139.9 MD
6449.7	6684.2	Start DLS 8.00 TFO 92.24
7141.5	7820.3	Start 4501.1 hold at 7820.3 MD
7127.5	12321.4	TD at 12321.4





Bayswater Exploration & Production, LLC

SEC.1-T6N-R65W

Wilkinson 1-P Pad Sec.1-T6N-R65W

Wilkinson K-12HC

Wellbore #1

Plan: Plan #1 (7-29-15)

Standard Planning Report

03 August, 2015



BAYSWATER
EXPLORATION & PRODUCTION, LLC

Database:	EDMNEW	Local Co-ordinate Reference:	Well Wilkinson K-12HC
Company:	Bayswater Exploration & Production, LLC	TVD Reference:	WELL @ 4796.5ft (RKB - 22.5')
Project:	SEC.1-T6N-R65W	MD Reference:	WELL @ 4796.5ft (RKB - 22.5')
Site:	Wilkinson 1-P Pad Sec.1-T6N-R65W	North Reference:	True
Well:	Wilkinson K-12HC	Survey Calculation Method:	Minimum Curvature
Wellbore:	Wellbore #1		
Design:	Plan #1 (7-29-15)		

Project	SEC.1-T6N-R65W, Weld County, Colorado		
Map System:	US State Plane 1983	System Datum:	Mean Sea Level
Geo Datum:	North American Datum 1983		Using Well Reference Point
Map Zone:	Colorado Northern Zone		Using geodetic scale factor

Site						Wilkinson 1-P Pad Sec.1-T6N-R65W											
Site Position:						Northing:			1,429,424.05 ft			Latitude:			40.508834		
From:			Lat/Long			Easting:			3,244,803.96 ft			Longitude:			-104.619596		
Position Uncertainty:			0.0 ft			Slot Radius:			"			Grid Convergence:			0.57 °		

Well	Wilkinson K-12HC					
Well Position	+N/-S	-3.7 ft	Northing:	1,429,421.88 ft	Latitude:	40.508824
	+E/-W	149.9 ft	Easting:	3,244,953.87 ft	Longitude:	-104.619057
Position Uncertainty		0.0 ft	Wellhead Elevation:	ft	Ground Level:	4,774.0 ft

Wellbore	Wellbore #1				
Magnetics	Model Name	Sample Date	Declination (°)	Dip Angle (°)	Field Strength (nT)
	IGRF2010	8/3/2015	8.24	67.02	52,768

Design	Plan #1 (7-29-15)			
Audit Notes:				
Version:	Phase:	PROTOTYPE	Tie On Depth:	0.0
Vertical Section:	Depth From (TVD) (ft)	+N/-S (ft)	+E/-W (ft)	Direction (°)
	0.0	0.0	0.0	161.06

Plan Sections										
Measured Depth (ft)	Inclination (°)	Azimuth (°)	Vertical Depth (ft)	+N/-S (ft)	+E/-W (ft)	Dogleg Rate (°/100ft)	Build Rate (°/100ft)	Turn Rate (°/100ft)	TFO (°)	Target
0.0	0.00	0.00	0.0	0.0	0.0	0.00	0.00	0.00	0.00	
400.0	0.00	0.00	400.0	0.0	0.0	0.00	0.00	0.00	0.00	
2,139.9	17.40	88.29	2,113.3	7.8	262.0	1.00	1.00	0.00	88.29	
6,684.2	17.40	88.29	6,449.7	48.4	1,620.3	0.00	0.00	0.00	0.00	
7,820.3	90.18	180.69	7,141.5	-672.5	1,828.9	8.00	6.41	8.13	92.24	LPL 310'FNL, 2285
12,321.4	90.18	180.69	7,127.5	-5,173.2	1,774.8	0.00	0.00	0.00	0.00	BHL 470'FSL, 2285

Database:	EDMNEW	Local Co-ordinate Reference:	Well Wilkinson K-12HC
Company:	Bayswater Exploration & Production, LLC	TVD Reference:	WELL @ 4796.5ft (RKB - 22.5')
Project:	SEC.1-T6N-R65W	MD Reference:	WELL @ 4796.5ft (RKB - 22.5')
Site:	Wilkinson 1-P Pad Sec.1-T6N-R65W	North Reference:	True
Well:	Wilkinson K-12HC	Survey Calculation Method:	Minimum Curvature
Wellbore:	Wellbore #1		
Design:	Plan #1 (7-29-15)		

Planned Survey									
Measured Depth (ft)	Inclination (°)	Azimuth (°)	Vertical Depth (ft)	+N/-S (ft)	+E/-W (ft)	Vertical Section (ft)	Dogleg Rate (°/100ft)	Build Rate (°/100ft)	Turn Rate (°/100ft)
0.0	0.00	0.00	0.0	0.0	0.0	0.0	0.00	0.00	0.00
1.0	0.00	0.00	1.0	0.0	0.0	0.0	0.00	0.00	0.00
SHL 316'FSL, 450'FWL, SEC.1									
100.0	0.00	0.00	100.0	0.0	0.0	0.0	0.00	0.00	0.00
200.0	0.00	0.00	200.0	0.0	0.0	0.0	0.00	0.00	0.00
300.0	0.00	0.00	300.0	0.0	0.0	0.0	0.00	0.00	0.00
400.0	0.00	0.00	400.0	0.0	0.0	0.0	0.00	0.00	0.00
KOP - Start Build 1.00									
500.0	1.00	88.29	500.0	0.0	0.9	0.3	1.00	1.00	0.00
600.0	2.00	88.29	600.0	0.1	3.5	1.0	1.00	1.00	0.00
700.0	3.00	88.29	699.9	0.2	7.8	2.3	1.00	1.00	0.00
800.0	4.00	88.29	799.7	0.4	14.0	4.1	1.00	1.00	0.00
900.0	5.00	88.29	899.4	0.7	21.8	6.5	1.00	1.00	0.00
1,000.0	6.00	88.29	998.9	0.9	31.4	9.3	1.00	1.00	0.00
1,100.0	7.00	88.29	1,098.3	1.3	42.7	12.6	1.00	1.00	0.00
1,200.0	8.00	88.29	1,197.4	1.7	55.7	16.5	1.00	1.00	0.00
1,300.0	9.00	88.29	1,296.3	2.1	70.5	20.9	1.00	1.00	0.00
1,400.0	10.00	88.29	1,394.9	2.6	87.0	25.8	1.00	1.00	0.00
1,500.0	11.00	88.29	1,493.3	3.1	105.2	31.2	1.00	1.00	0.00
1,600.0	12.00	88.29	1,591.2	3.7	125.1	37.1	1.00	1.00	0.00
1,700.0	13.00	88.29	1,688.9	4.4	146.8	43.5	1.00	1.00	0.00
1,800.0	14.00	88.29	1,786.1	5.1	170.1	50.4	1.00	1.00	0.00
1,900.0	15.00	88.29	1,882.9	5.8	195.1	57.8	1.00	1.00	0.00
2,000.0	16.00	88.29	1,979.3	6.6	221.9	65.7	1.00	1.00	0.00
2,100.0	17.00	88.29	2,075.2	7.5	250.2	74.1	1.00	1.00	0.00
2,139.9	17.40	88.29	2,113.3	7.8	262.0	77.6	1.00	1.00	0.00
Start 4544.3 hold at 2139.9 MD									
2,200.0	17.40	88.29	2,170.6	8.4	280.0	83.0	0.00	0.00	0.00
2,300.0	17.40	88.29	2,266.1	9.3	309.9	91.8	0.00	0.00	0.00
2,400.0	17.40	88.29	2,361.5	10.1	339.8	100.7	0.00	0.00	0.00
2,500.0	17.40	88.29	2,456.9	11.0	369.7	109.5	0.00	0.00	0.00
2,600.0	17.40	88.29	2,552.3	11.9	399.6	118.4	0.00	0.00	0.00
2,700.0	17.40	88.29	2,647.8	12.8	429.4	127.2	0.00	0.00	0.00
2,800.0	17.40	88.29	2,743.2	13.7	459.3	136.1	0.00	0.00	0.00
2,900.0	17.40	88.29	2,838.6	14.6	489.2	144.9	0.00	0.00	0.00
3,000.0	17.40	88.29	2,934.0	15.5	519.1	153.8	0.00	0.00	0.00
3,100.0	17.40	88.29	3,029.5	16.4	549.0	162.6	0.00	0.00	0.00
3,200.0	17.40	88.29	3,124.9	17.3	578.9	171.5	0.00	0.00	0.00
3,300.0	17.40	88.29	3,220.3	18.2	608.8	180.4	0.00	0.00	0.00
3,400.0	17.40	88.29	3,315.7	19.1	638.7	189.2	0.00	0.00	0.00
3,500.0	17.40	88.29	3,411.2	20.0	668.6	198.1	0.00	0.00	0.00
3,600.0	17.40	88.29	3,506.6	20.9	698.4	206.9	0.00	0.00	0.00
3,700.0	17.40	88.29	3,602.0	21.7	728.3	215.8	0.00	0.00	0.00
3,800.0	17.40	88.29	3,697.4	22.6	758.2	224.6	0.00	0.00	0.00
3,900.0	17.40	88.29	3,792.9	23.5	788.1	233.5	0.00	0.00	0.00
4,000.0	17.40	88.29	3,888.3	24.4	818.0	242.3	0.00	0.00	0.00
4,100.0	17.40	88.29	3,983.7	25.3	847.9	251.2	0.00	0.00	0.00
4,200.0	17.40	88.29	4,079.1	26.2	877.8	260.1	0.00	0.00	0.00
4,300.0	17.40	88.29	4,174.5	27.1	907.7	268.9	0.00	0.00	0.00
4,400.0	17.40	88.29	4,270.0	28.0	937.6	277.8	0.00	0.00	0.00
4,500.0	17.40	88.29	4,365.4	28.9	967.4	286.6	0.00	0.00	0.00
4,600.0	17.40	88.29	4,460.8	29.8	997.3	295.5	0.00	0.00	0.00
4,700.0	17.40	88.29	4,556.2	30.7	1,027.2	304.3	0.00	0.00	0.00

Database:	EDMNEW	Local Co-ordinate Reference:	Well Wilkinson K-12HC
Company:	Bayswater Exploration & Production, LLC	TVD Reference:	WELL @ 4796.5ft (RKB - 22.5')
Project:	SEC.1-T6N-R65W	MD Reference:	WELL @ 4796.5ft (RKB - 22.5')
Site:	Wilkinson 1-P Pad Sec.1-T6N-R65W	North Reference:	True
Well:	Wilkinson K-12HC	Survey Calculation Method:	Minimum Curvature
Wellbore:	Wellbore #1		
Design:	Plan #1 (7-29-15)		

Planned Survey									
Measured Depth (ft)	Inclination (°)	Azimuth (°)	Vertical Depth (ft)	+N/-S (ft)	+E/-W (ft)	Vertical Section (ft)	Dogleg Rate (°/100ft)	Build Rate (°/100ft)	Turn Rate (°/100ft)
4,800.0	17.40	88.29	4,651.7	31.6	1,057.1	313.2	0.00	0.00	0.00
4,900.0	17.40	88.29	4,747.1	32.5	1,087.0	322.0	0.00	0.00	0.00
5,000.0	17.40	88.29	4,842.5	33.3	1,116.9	330.9	0.00	0.00	0.00
5,100.0	17.40	88.29	4,937.9	34.2	1,146.8	339.7	0.00	0.00	0.00
5,200.0	17.40	88.29	5,033.4	35.1	1,176.7	348.6	0.00	0.00	0.00
5,300.0	17.40	88.29	5,128.8	36.0	1,206.6	357.5	0.00	0.00	0.00
5,400.0	17.40	88.29	5,224.2	36.9	1,236.4	366.3	0.00	0.00	0.00
5,500.0	17.40	88.29	5,319.6	37.8	1,266.3	375.2	0.00	0.00	0.00
5,600.0	17.40	88.29	5,415.1	38.7	1,296.2	384.0	0.00	0.00	0.00
5,700.0	17.40	88.29	5,510.5	39.6	1,326.1	392.9	0.00	0.00	0.00
5,800.0	17.40	88.29	5,605.9	40.5	1,356.0	401.7	0.00	0.00	0.00
5,900.0	17.40	88.29	5,701.3	41.4	1,385.9	410.6	0.00	0.00	0.00
6,000.0	17.40	88.29	5,796.8	42.3	1,415.8	419.4	0.00	0.00	0.00
6,100.0	17.40	88.29	5,892.2	43.2	1,445.7	428.3	0.00	0.00	0.00
6,200.0	17.40	88.29	5,987.6	44.1	1,475.6	437.1	0.00	0.00	0.00
6,300.0	17.40	88.29	6,083.0	44.9	1,505.5	446.0	0.00	0.00	0.00
6,400.0	17.40	88.29	6,178.5	45.8	1,535.3	454.9	0.00	0.00	0.00
6,500.0	17.40	88.29	6,273.9	46.7	1,565.2	463.7	0.00	0.00	0.00
6,600.0	17.40	88.29	6,369.3	47.6	1,595.1	472.6	0.00	0.00	0.00
6,684.2	17.40	88.29	6,449.7	48.4	1,620.3	480.0	0.00	0.00	0.00
Start DLS 8.00 TFO 92.24									
6,700.0	17.39	92.52	6,464.7	48.3	1,625.0	481.6	8.00	-0.03	26.76
6,800.0	19.32	117.38	6,559.8	40.1	1,654.7	499.0	8.00	1.93	24.86
6,900.0	23.83	135.50	6,652.9	18.0	1,683.6	529.3	8.00	4.51	18.12
7,000.0	29.78	147.46	6,742.1	-17.4	1,711.1	571.7	8.00	5.94	11.96
7,100.0	36.46	155.56	6,825.9	-65.5	1,736.8	625.5	8.00	6.68	8.10
7,200.0	43.53	161.39	6,902.5	-125.2	1,760.1	689.6	8.00	7.07	5.83
7,300.0	50.83	165.86	6,970.4	-195.6	1,780.6	762.8	8.00	7.30	4.47
7,400.0	58.27	169.47	7,028.4	-275.1	1,797.9	843.6	8.00	7.44	3.62
7,500.0	65.80	172.55	7,075.2	-362.3	1,811.6	930.6	8.00	7.53	3.07
7,600.0	73.38	175.27	7,110.1	-455.4	1,821.5	1,021.8	8.00	7.58	2.73
7,700.0	81.00	177.79	7,132.3	-552.7	1,827.4	1,115.7	8.00	7.61	2.52
7,800.0	88.63	180.20	7,141.3	-652.2	1,829.1	1,210.4	8.00	7.63	2.41
7,820.3	90.18	180.69	7,141.5	-672.5	1,828.9	1,229.6	8.00	7.63	2.39
Start 4501.1 hold at 7820.3 MD - 7" - LPL 310'FNL, 2285'FWL, SEC.12									
7,900.0	90.18	180.69	7,141.3	-752.2	1,828.0	1,304.6	0.00	0.00	0.00
8,000.0	90.18	180.69	7,140.9	-852.1	1,826.8	1,398.8	0.00	0.00	0.00
8,100.0	90.18	180.69	7,140.6	-952.1	1,825.6	1,493.0	0.00	0.00	0.00
8,200.0	90.18	180.69	7,140.3	-1,052.1	1,824.4	1,587.2	0.00	0.00	0.00
8,300.0	90.18	180.69	7,140.0	-1,152.1	1,823.2	1,681.4	0.00	0.00	0.00
8,400.0	90.18	180.69	7,139.7	-1,252.1	1,822.0	1,775.6	0.00	0.00	0.00
8,500.0	90.18	180.69	7,139.4	-1,352.1	1,820.8	1,869.8	0.00	0.00	0.00
8,600.0	90.18	180.69	7,139.1	-1,452.1	1,819.6	1,964.0	0.00	0.00	0.00
8,700.0	90.18	180.69	7,138.8	-1,552.1	1,818.3	2,058.2	0.00	0.00	0.00
8,800.0	90.18	180.69	7,138.5	-1,652.1	1,817.1	2,152.3	0.00	0.00	0.00
8,900.0	90.18	180.69	7,138.1	-1,752.1	1,815.9	2,246.5	0.00	0.00	0.00
9,000.0	90.18	180.69	7,137.8	-1,852.1	1,814.7	2,340.7	0.00	0.00	0.00
9,100.0	90.18	180.69	7,137.5	-1,952.1	1,813.5	2,434.9	0.00	0.00	0.00
9,200.0	90.18	180.69	7,137.2	-2,052.1	1,812.3	2,529.1	0.00	0.00	0.00
9,300.0	90.18	180.69	7,136.9	-2,152.0	1,811.1	2,623.3	0.00	0.00	0.00
9,400.0	90.18	180.69	7,136.6	-2,252.0	1,809.9	2,717.5	0.00	0.00	0.00
9,500.0	90.18	180.69	7,136.3	-2,352.0	1,808.7	2,811.7	0.00	0.00	0.00
9,600.0	90.18	180.69	7,136.0	-2,452.0	1,807.5	2,905.9	0.00	0.00	0.00
9,700.0	90.18	180.69	7,135.7	-2,552.0	1,806.3	3,000.1	0.00	0.00	0.00

Database:	EDMNEW	Local Co-ordinate Reference:	Well Wilkinson K-12HC
Company:	Bayswater Exploration & Production, LLC	TVD Reference:	WELL @ 4796.5ft (RKB - 22.5')
Project:	SEC.1-T6N-R65W	MD Reference:	WELL @ 4796.5ft (RKB - 22.5')
Site:	Wilkinson 1-P Pad Sec.1-T6N-R65W	North Reference:	True
Well:	Wilkinson K-12HC	Survey Calculation Method:	Minimum Curvature
Wellbore:	Wellbore #1		
Design:	Plan #1 (7-29-15)		

Planned Survey										
Measured Depth (ft)	Inclination (°)	Azimuth (°)	Vertical Depth (ft)	+N/-S (ft)	+E/-W (ft)	Vertical Section (ft)	Dogleg Rate (°/100ft)	Build Rate (°/100ft)	Turn Rate (°/100ft)	
9,800.0	90.18	180.69	7,135.3	-2,652.0	1,805.1	3,094.3	0.00	0.00	0.00	
9,900.0	90.18	180.69	7,135.0	-2,752.0	1,803.9	3,188.4	0.00	0.00	0.00	
10,000.0	90.18	180.69	7,134.7	-2,852.0	1,802.7	3,282.6	0.00	0.00	0.00	
10,100.0	90.18	180.69	7,134.4	-2,952.0	1,801.5	3,376.8	0.00	0.00	0.00	
10,200.0	90.18	180.69	7,134.1	-3,052.0	1,800.3	3,471.0	0.00	0.00	0.00	
10,300.0	90.18	180.69	7,133.8	-3,152.0	1,799.1	3,565.2	0.00	0.00	0.00	
10,400.0	90.18	180.69	7,133.5	-3,252.0	1,797.9	3,659.4	0.00	0.00	0.00	
10,500.0	90.18	180.69	7,133.2	-3,352.0	1,796.7	3,753.6	0.00	0.00	0.00	
10,600.0	90.18	180.69	7,132.9	-3,451.9	1,795.5	3,847.8	0.00	0.00	0.00	
10,700.0	90.18	180.69	7,132.5	-3,551.9	1,794.3	3,942.0	0.00	0.00	0.00	
10,800.0	90.18	180.69	7,132.2	-3,651.9	1,793.1	4,036.2	0.00	0.00	0.00	
10,900.0	90.18	180.69	7,131.9	-3,751.9	1,791.9	4,130.3	0.00	0.00	0.00	
11,000.0	90.18	180.69	7,131.6	-3,851.9	1,790.7	4,224.5	0.00	0.00	0.00	
11,100.0	90.18	180.69	7,131.3	-3,951.9	1,789.5	4,318.7	0.00	0.00	0.00	
11,200.0	90.18	180.69	7,131.0	-4,051.9	1,788.3	4,412.9	0.00	0.00	0.00	
11,300.0	90.18	180.69	7,130.7	-4,151.9	1,787.1	4,507.1	0.00	0.00	0.00	
11,400.0	90.18	180.69	7,130.4	-4,251.9	1,785.8	4,601.3	0.00	0.00	0.00	
11,500.0	90.18	180.69	7,130.1	-4,351.9	1,784.6	4,695.5	0.00	0.00	0.00	
11,600.0	90.18	180.69	7,129.7	-4,451.9	1,783.4	4,789.7	0.00	0.00	0.00	
11,700.0	90.18	180.69	7,129.4	-4,551.9	1,782.2	4,883.9	0.00	0.00	0.00	
11,800.0	90.18	180.69	7,129.1	-4,651.9	1,781.0	4,978.1	0.00	0.00	0.00	
11,900.0	90.18	180.69	7,128.8	-4,751.8	1,779.8	5,072.3	0.00	0.00	0.00	
12,000.0	90.18	180.69	7,128.5	-4,851.8	1,778.6	5,166.4	0.00	0.00	0.00	
12,100.0	90.18	180.69	7,128.2	-4,951.8	1,777.4	5,260.6	0.00	0.00	0.00	
12,200.0	90.18	180.69	7,127.9	-5,051.8	1,776.2	5,354.8	0.00	0.00	0.00	
12,300.0	90.18	180.69	7,127.6	-5,151.8	1,775.0	5,449.0	0.00	0.00	0.00	
12,321.4	90.18	180.69	7,127.5	-5,173.2	1,774.8	5,469.2	0.00	0.00	0.00	
TD at 12321.4 - BHL 470'FSL, 2285'FWL, SEC.12										

Targets										
Target Name	Dip Angle (°)	Dip Dir. (°)	TVD (ft)	+N/-S (ft)	+E/-W (ft)	Northing (ft)	Easting (ft)	Latitude	Longitude	
BHL 470'FSL, 2285'FWL - hit/miss target - Shape - Point	0.00	0.00	7,127.5	-5,173.2	1,774.8	1,424,266.70	3,246,779.87	40.494624	-104.612676	
LPL 310'FNL, 2285'FWL - plan hits target center - Point	0.00	0.00	7,141.5	-672.5	1,828.9	1,428,767.65	3,246,789.33	40.506978	-104.612480	
SHL 316'FSL, 450'FWL - plan hits target center - Point	0.00	0.00	1.0	0.0	0.0	1,429,421.89	3,244,953.87	40.508824	-104.619057	

Casing Points					
Measured Depth (ft)	Vertical Depth (ft)	Name	Casing Diameter (")	Hole Diameter (")	
7,820.3	7,141.5	7"	7	7-1/2	

Database:	EDMNEW	Local Co-ordinate Reference:	Well Wilkinson K-12HC
Company:	Bayswater Exploration & Production, LLC	TVD Reference:	WELL @ 4796.5ft (RKB - 22.5')
Project:	SEC.1-T6N-R65W	MD Reference:	WELL @ 4796.5ft (RKB - 22.5')
Site:	Wilkinson 1-P Pad Sec.1-T6N-R65W	North Reference:	True
Well:	Wilkinson K-12HC	Survey Calculation Method:	Minimum Curvature
Wellbore:	Wellbore #1		
Design:	Plan #1 (7-29-15)		

Plan Annotations				
Measured Depth (ft)	Vertical Depth (ft)	Local Coordinates		Comment
		+N/-S (ft)	+E/-W (ft)	
400.0	400.0	0.0	0.0	KOP - Start Build 1.00
2,139.9	2,113.3	7.8	262.0	Start 4544.3 hold at 2139.9 MD
6,684.2	6,449.7	48.4	1,620.3	Start DLS 8.00 TFO 92.24
7,820.3	7,141.5	-672.5	1,828.9	Start 4501.1 hold at 7820.3 MD
12,321.4	7,127.5	-5,173.2	1,774.8	TD at 12321.4