

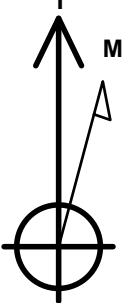
Bayswater Exploration & Production, LLC

Well Name: **Wilkinson J-12HN**

Surface Location: Wilkinson 1-P Pad Sec.1-T6N-R65W
North American Datum 1983 , US State Plane 1983 , Colorado Northern Zone
Ground Elevation: 4774.0
+N/-S +E/-W Northing Easting Latitude Longitude Slot
0.0 0.0 1429422.10 3244938.85 40.508825 -104.619111
RKB - 22.5' WELL @ 4796.5ft (RKB - 22.5')

WELLBORE TARGET DETAILS

Name	TVD	+N/-S	+E/-W	Shape
SHL 316'FSL, 435'FWL, SEC.1	1.0	0.0	0.0	Point
BHL 470'FSL, 2120'FWL, SEC.12	7036.5	-5168.5	1624.8	Point
LPL 50'FNL, 2120'FWL, SEC.12	7063.5	-408.7	1682.1	Point



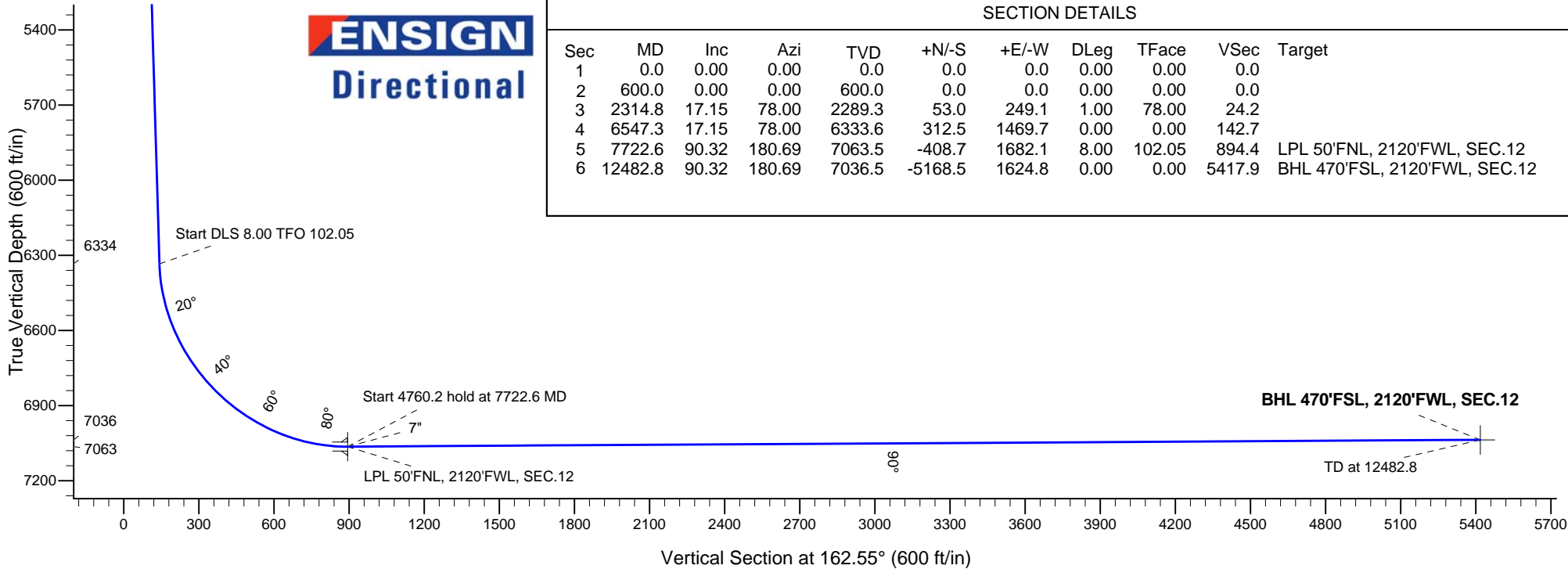
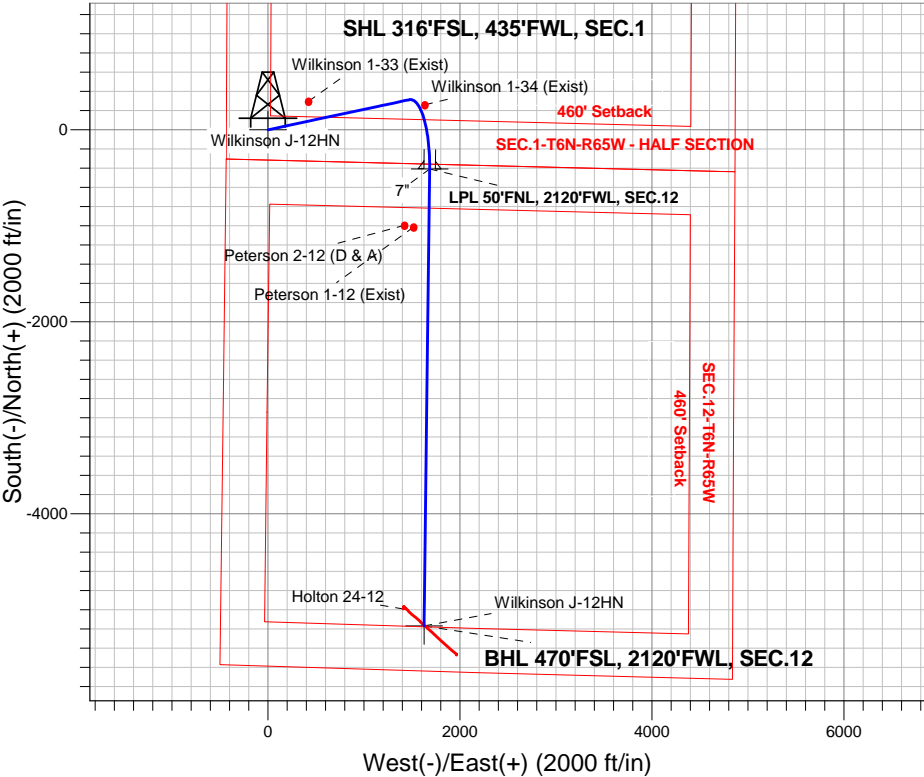
Azimuths to True North
Magnetic North: 8.24°

Magnetic Field
Strength: 52767.8nT
Dip Angle: 67.02°
Date: 8/3/2015
Model: IGRF2010

Wilkinson 1-P Pad Sec.1-T6N-R65W
Wilkinson J-12HN
Plan #1 (7-29-15)
6:42, August 03 2015

ANNOTATIONS

TVD	MD	Annotation
600.0	600.0	KOP - Start Build 1.00
2289.3	2314.8	Start 4232.5 hold at 2314.8 MD
6333.6	6547.3	Start DLS 8.00 TFO 102.05
7063.5	7722.6	Start 4760.2 hold at 7722.6 MD
7036.5	12482.8	TD at 12482.8





Bayswater Exploration & Production, LLC

SEC.1-T6N-R65W

Wilkinson 1-P Pad Sec.1-T6N-R65W

Wilkinson J-12HN

Wellbore #1

Plan: Plan #1 (7-29-15)

Standard Planning Report

03 August, 2015



BAYSWATER
EXPLORATION & PRODUCTION, LLC

Database:	EDMNEW	Local Co-ordinate Reference:	Well Wilkinson J-12HN
Company:	Bayswater Exploration & Production, LLC	TVD Reference:	WELL @ 4796.5ft (RKB - 22.5')
Project:	SEC.1-T6N-R65W	MD Reference:	WELL @ 4796.5ft (RKB - 22.5')
Site:	Wilkinson 1-P Pad Sec.1-T6N-R65W	North Reference:	True
Well:	Wilkinson J-12HN	Survey Calculation Method:	Minimum Curvature
Wellbore:	Wellbore #1		
Design:	Plan #1 (7-29-15)		

Project	SEC.1-T6N-R65W, Weld County, Colorado		
Map System:	US State Plane 1983	System Datum:	Mean Sea Level
Geo Datum:	North American Datum 1983		Using Well Reference Point
Map Zone:	Colorado Northern Zone		Using geodetic scale factor

Site		Wilkinson 1-P Pad Sec.1-T6N-R65W			
Site Position:		Northing:	1,429,424.05 ft	Latitude:	40.508834
From:	Lat/Long	Easting:	3,244,803.96 ft	Longitude:	-104.619596
Position Uncertainty:	0.0 ft	Slot Radius:	"	Grid Convergence:	0.57 °

Well	Wilkinson J-12HN					
Well Position	+N-S	-3.3 ft	Northing:	1,429,422.10 ft	Latitude:	40.508825
	+E-W	134.9 ft	Easting:	3,244,938.85 ft	Longitude:	-104.619111
Position Uncertainty		0.0 ft	Wellhead Elevation:	ft	Ground Level:	4,774.0 ft

Wellbore	Wellbore #1				
Magnetics	Model Name	Sample Date	Declination (°)	Dip Angle (°)	Field Strength (nT)
	IGRF2010	8/3/2015	8.24	67.02	52,768

Design	Plan #1 (7-29-15)			
Audit Notes:				
Version:	Phase:	PROTOTYPE	Tie On Depth:	0.0
Vertical Section:	Depth From (TVD) (ft)	+N/-S (ft)	+E/-W (ft)	Direction (°)
	0.0	0.0	0.0	162.55

Plan Sections										
Measured Depth (ft)	Inclination (°)	Azimuth (°)	Vertical Depth (ft)	+N/-S (ft)	+E/-W (ft)	Dogleg Rate (°/100ft)	Build Rate (°/100ft)	Turn Rate (°/100ft)	TFO (°)	Target
0.0	0.00	0.00	0.0	0.0	0.0	0.00	0.00	0.00	0.00	
600.0	0.00	0.00	600.0	0.0	0.0	0.00	0.00	0.00	0.00	
2,314.8	17.15	78.00	2,289.3	53.0	249.1	1.00	1.00	0.00	78.00	
6,547.3	17.15	78.00	6,333.6	312.5	1,469.7	0.00	0.00	0.00	0.00	
7,722.6	90.32	180.69	7,063.5	-408.7	1,682.1	8.00	6.23	8.74	102.05	LPL 50'FNL, 2120'F
12,482.8	90.32	180.69	7,036.5	-5,168.5	1,624.8	0.00	0.00	0.00	0.00	BHL 470'FSL, 2120

Database:	EDMNEW	Local Co-ordinate Reference:	Well Wilkinson J-12HN
Company:	Bayswater Exploration & Production, LLC	TVD Reference:	WELL @ 4796.5ft (RKB - 22.5')
Project:	SEC.1-T6N-R65W	MD Reference:	WELL @ 4796.5ft (RKB - 22.5')
Site:	Wilkinson 1-P Pad Sec.1-T6N-R65W	North Reference:	True
Well:	Wilkinson J-12HN	Survey Calculation Method:	Minimum Curvature
Wellbore:	Wellbore #1		
Design:	Plan #1 (7-29-15)		

Planned Survey									
Measured Depth (ft)	Inclination (°)	Azimuth (°)	Vertical Depth (ft)	+N/-S (ft)	+E/-W (ft)	Vertical Section (ft)	Dogleg Rate (°/100ft)	Build Rate (°/100ft)	Turn Rate (°/100ft)
0.0	0.00	0.00	0.0	0.0	0.0	0.0	0.00	0.00	0.00
1.0	0.00	0.00	1.0	0.0	0.0	0.0	0.00	0.00	0.00
SHL 316'FSL, 435'FWL, SEC.1									
100.0	0.00	0.00	100.0	0.0	0.0	0.0	0.00	0.00	0.00
200.0	0.00	0.00	200.0	0.0	0.0	0.0	0.00	0.00	0.00
300.0	0.00	0.00	300.0	0.0	0.0	0.0	0.00	0.00	0.00
400.0	0.00	0.00	400.0	0.0	0.0	0.0	0.00	0.00	0.00
500.0	0.00	0.00	500.0	0.0	0.0	0.0	0.00	0.00	0.00
600.0	0.00	0.00	600.0	0.0	0.0	0.0	0.00	0.00	0.00
KOP - Start Build 1.00									
700.0	1.00	78.00	700.0	0.2	0.9	0.1	1.00	1.00	0.00
800.0	2.00	78.00	800.0	0.7	3.4	0.3	1.00	1.00	0.00
900.0	3.00	78.00	899.9	1.6	7.7	0.7	1.00	1.00	0.00
1,000.0	4.00	78.00	999.7	2.9	13.7	1.3	1.00	1.00	0.00
1,100.0	5.00	78.00	1,099.4	4.5	21.3	2.1	1.00	1.00	0.00
1,200.0	6.00	78.00	1,198.9	6.5	30.7	3.0	1.00	1.00	0.00
1,300.0	7.00	78.00	1,298.3	8.9	41.8	4.1	1.00	1.00	0.00
1,400.0	8.00	78.00	1,397.4	11.6	54.5	5.3	1.00	1.00	0.00
1,500.0	9.00	78.00	1,496.3	14.7	69.0	6.7	1.00	1.00	0.00
1,600.0	10.00	78.00	1,594.9	18.1	85.1	8.3	1.00	1.00	0.00
1,700.0	11.00	78.00	1,693.3	21.9	103.0	10.0	1.00	1.00	0.00
1,800.0	12.00	78.00	1,791.2	26.0	122.5	11.9	1.00	1.00	0.00
1,900.0	13.00	78.00	1,888.9	30.5	143.6	13.9	1.00	1.00	0.00
2,000.0	14.00	78.00	1,986.1	35.4	166.5	16.2	1.00	1.00	0.00
2,100.0	15.00	78.00	2,082.9	40.6	191.0	18.5	1.00	1.00	0.00
2,200.0	16.00	78.00	2,179.3	46.2	217.1	21.1	1.00	1.00	0.00
2,300.0	17.00	78.00	2,275.2	52.1	244.9	23.8	1.00	1.00	0.00
2,314.8	17.15	78.00	2,289.3	53.0	249.1	24.2	1.00	1.00	0.00
Start 4232.5 hold at 2314.8 MD									
2,400.0	17.15	78.00	2,370.7	58.2	273.7	26.6	0.00	0.00	0.00
2,500.0	17.15	78.00	2,466.3	64.3	302.5	29.4	0.00	0.00	0.00
2,600.0	17.15	78.00	2,561.8	70.5	331.4	32.2	0.00	0.00	0.00
2,700.0	17.15	78.00	2,657.4	76.6	360.2	35.0	0.00	0.00	0.00
2,800.0	17.15	78.00	2,752.9	82.7	389.1	37.8	0.00	0.00	0.00
2,900.0	17.15	78.00	2,848.5	88.9	417.9	40.6	0.00	0.00	0.00
3,000.0	17.15	78.00	2,944.1	95.0	446.7	43.4	0.00	0.00	0.00
3,100.0	17.15	78.00	3,039.6	101.1	475.6	46.2	0.00	0.00	0.00
3,200.0	17.15	78.00	3,135.2	107.2	504.4	49.0	0.00	0.00	0.00
3,300.0	17.15	78.00	3,230.7	113.4	533.3	51.8	0.00	0.00	0.00
3,400.0	17.15	78.00	3,326.3	119.5	562.1	54.6	0.00	0.00	0.00
3,500.0	17.15	78.00	3,421.8	125.6	590.9	57.4	0.00	0.00	0.00
3,600.0	17.15	78.00	3,517.4	131.8	619.8	60.2	0.00	0.00	0.00
3,700.0	17.15	78.00	3,612.9	137.9	648.6	63.0	0.00	0.00	0.00
3,800.0	17.15	78.00	3,708.5	144.0	677.5	65.8	0.00	0.00	0.00
3,900.0	17.15	78.00	3,804.0	150.2	706.3	68.6	0.00	0.00	0.00
4,000.0	17.15	78.00	3,899.6	156.3	735.1	71.4	0.00	0.00	0.00
4,100.0	17.15	78.00	3,995.2	162.4	764.0	74.2	0.00	0.00	0.00
4,200.0	17.15	78.00	4,090.7	168.6	792.8	77.0	0.00	0.00	0.00
4,300.0	17.15	78.00	4,186.3	174.7	821.6	79.8	0.00	0.00	0.00
4,400.0	17.15	78.00	4,281.8	180.8	850.5	82.6	0.00	0.00	0.00
4,500.0	17.15	78.00	4,377.4	187.0	879.3	85.4	0.00	0.00	0.00
4,600.0	17.15	78.00	4,472.9	193.1	908.2	88.2	0.00	0.00	0.00
4,700.0	17.15	78.00	4,568.5	199.2	937.0	91.0	0.00	0.00	0.00

Database:	EDMNEW	Local Co-ordinate Reference:	Well Wilkinson J-12HN
Company:	Bayswater Exploration & Production, LLC	TVD Reference:	WELL @ 4796.5ft (RKB - 22.5')
Project:	SEC.1-T6N-R65W	MD Reference:	WELL @ 4796.5ft (RKB - 22.5')
Site:	Wilkinson 1-P Pad Sec.1-T6N-R65W	North Reference:	True
Well:	Wilkinson J-12HN	Survey Calculation Method:	Minimum Curvature
Wellbore:	Wellbore #1		
Design:	Plan #1 (7-29-15)		

Planned Survey									
Measured Depth (ft)	Inclination (°)	Azimuth (°)	Vertical Depth (ft)	+N/-S (ft)	+E/-W (ft)	Vertical Section (ft)	Dogleg Rate (°/100ft)	Build Rate (°/100ft)	Turn Rate (°/100ft)
4,800.0	17.15	78.00	4,664.0	205.4	965.8	93.8	0.00	0.00	0.00
4,900.0	17.15	78.00	4,759.6	211.5	994.7	96.6	0.00	0.00	0.00
5,000.0	17.15	78.00	4,855.1	217.6	1,023.5	99.4	0.00	0.00	0.00
5,100.0	17.15	78.00	4,950.7	223.7	1,052.4	102.2	0.00	0.00	0.00
5,200.0	17.15	78.00	5,046.3	229.9	1,081.2	105.0	0.00	0.00	0.00
5,300.0	17.15	78.00	5,141.8	236.0	1,110.0	107.8	0.00	0.00	0.00
5,400.0	17.15	78.00	5,237.4	242.1	1,138.9	110.6	0.00	0.00	0.00
5,500.0	17.15	78.00	5,332.9	248.3	1,167.7	113.4	0.00	0.00	0.00
5,600.0	17.15	78.00	5,428.5	254.4	1,196.6	116.2	0.00	0.00	0.00
5,700.0	17.15	78.00	5,524.0	260.5	1,225.4	119.0	0.00	0.00	0.00
5,800.0	17.15	78.00	5,619.6	266.7	1,254.2	121.8	0.00	0.00	0.00
5,900.0	17.15	78.00	5,715.1	272.8	1,283.1	124.6	0.00	0.00	0.00
6,000.0	17.15	78.00	5,810.7	278.9	1,311.9	127.4	0.00	0.00	0.00
6,100.0	17.15	78.00	5,906.3	285.1	1,340.8	130.2	0.00	0.00	0.00
6,200.0	17.15	78.00	6,001.8	291.2	1,369.6	133.0	0.00	0.00	0.00
6,300.0	17.15	78.00	6,097.4	297.3	1,398.4	135.8	0.00	0.00	0.00
6,400.0	17.15	78.00	6,192.9	303.5	1,427.3	138.6	0.00	0.00	0.00
6,500.0	17.15	78.00	6,288.5	309.6	1,456.1	141.4	0.00	0.00	0.00
6,547.3	17.15	78.00	6,333.6	312.5	1,469.7	142.7	0.00	0.00	0.00
Start DLS 8.00 TFO 102.05									
6,600.0	16.77	92.44	6,384.1	313.8	1,484.9	146.0	8.00	-0.72	27.39
6,700.0	18.75	118.08	6,479.5	305.6	1,513.6	162.4	8.00	1.98	25.64
6,800.0	23.37	136.42	6,572.9	283.6	1,541.5	191.7	8.00	4.62	18.34
6,900.0	29.41	148.31	6,662.5	248.3	1,568.1	233.4	8.00	6.04	11.89
7,000.0	36.17	156.27	6,746.5	200.3	1,592.9	286.6	8.00	6.75	7.96
7,100.0	43.30	161.96	6,823.4	140.6	1,615.5	350.3	8.00	7.13	5.69
7,200.0	50.65	166.30	6,891.6	70.3	1,635.3	423.3	8.00	7.35	4.34
7,300.0	58.13	169.80	6,949.8	-9.2	1,652.0	504.2	8.00	7.48	3.50
7,400.0	65.69	172.77	6,996.9	-96.3	1,665.3	591.3	8.00	7.56	2.97
7,500.0	73.30	175.41	7,031.9	-189.4	1,674.8	683.0	8.00	7.61	2.64
7,600.0	80.94	177.84	7,054.2	-286.6	1,680.5	777.4	8.00	7.64	2.43
7,700.0	88.59	180.17	7,063.3	-386.1	1,682.3	872.8	8.00	7.66	2.33
7,722.6	90.32	180.69	7,063.5	-408.7	1,682.1	894.4	8.00	7.66	2.31
Start 4760.2 hold at 7722.6 MD - 7" - LPL 50'FNL, 2120'FWL, SEC.12									
7,800.0	90.32	180.69	7,063.1	-486.1	1,681.2	967.9	0.00	0.00	0.00
7,900.0	90.32	180.69	7,062.5	-586.1	1,680.0	1,062.9	0.00	0.00	0.00
8,000.0	90.32	180.69	7,061.9	-686.1	1,678.8	1,158.0	0.00	0.00	0.00
8,100.0	90.32	180.69	7,061.4	-786.1	1,677.6	1,253.0	0.00	0.00	0.00
8,200.0	90.32	180.69	7,060.8	-886.1	1,676.4	1,348.0	0.00	0.00	0.00
8,300.0	90.32	180.69	7,060.2	-986.1	1,675.1	1,443.0	0.00	0.00	0.00
8,400.0	90.32	180.69	7,059.7	-1,086.0	1,673.9	1,538.1	0.00	0.00	0.00
8,500.0	90.32	180.69	7,059.1	-1,186.0	1,672.7	1,633.1	0.00	0.00	0.00
8,600.0	90.32	180.69	7,058.5	-1,286.0	1,671.5	1,728.1	0.00	0.00	0.00
8,700.0	90.32	180.69	7,058.0	-1,386.0	1,670.3	1,823.2	0.00	0.00	0.00
8,800.0	90.32	180.69	7,057.4	-1,486.0	1,669.1	1,918.2	0.00	0.00	0.00
8,900.0	90.32	180.69	7,056.8	-1,586.0	1,667.9	2,013.2	0.00	0.00	0.00
9,000.0	90.32	180.69	7,056.3	-1,686.0	1,666.7	2,108.2	0.00	0.00	0.00
9,100.0	90.32	180.69	7,055.7	-1,786.0	1,665.5	2,203.3	0.00	0.00	0.00
9,200.0	90.32	180.69	7,055.1	-1,886.0	1,664.3	2,298.3	0.00	0.00	0.00
9,300.0	90.32	180.69	7,054.6	-1,986.0	1,663.1	2,393.3	0.00	0.00	0.00
9,400.0	90.32	180.69	7,054.0	-2,086.0	1,661.9	2,488.4	0.00	0.00	0.00
9,500.0	90.32	180.69	7,053.4	-2,185.9	1,660.7	2,583.4	0.00	0.00	0.00
9,600.0	90.32	180.69	7,052.9	-2,285.9	1,659.5	2,678.4	0.00	0.00	0.00
9,700.0	90.32	180.69	7,052.3	-2,385.9	1,658.3	2,773.4	0.00	0.00	0.00

Database:	EDMNEW	Local Co-ordinate Reference:	Well Wilkinson J-12HN
Company:	Bayswater Exploration & Production, LLC	TVD Reference:	WELL @ 4796.5ft (RKB - 22.5')
Project:	SEC.1-T6N-R65W	MD Reference:	WELL @ 4796.5ft (RKB - 22.5')
Site:	Wilkinson 1-P Pad Sec.1-T6N-R65W	North Reference:	True
Well:	Wilkinson J-12HN	Survey Calculation Method:	Minimum Curvature
Wellbore:	Wellbore #1		
Design:	Plan #1 (7-29-15)		

Planned Survey										
Measured Depth (ft)	Inclination (°)	Azimuth (°)	Vertical Depth (ft)	+N/-S (ft)	+E/-W (ft)	Vertical Section (ft)	Dogleg Rate (°/100ft)	Build Rate (°/100ft)	Turn Rate (°/100ft)	
9,800.0	90.32	180.69	7,051.7	-2,485.9	1,657.1	2,868.5	0.00	0.00	0.00	
9,900.0	90.32	180.69	7,051.1	-2,585.9	1,655.9	2,963.5	0.00	0.00	0.00	
10,000.0	90.32	180.69	7,050.6	-2,685.9	1,654.7	3,058.5	0.00	0.00	0.00	
10,100.0	90.32	180.69	7,050.0	-2,785.9	1,653.5	3,153.5	0.00	0.00	0.00	
10,200.0	90.32	180.69	7,049.4	-2,885.9	1,652.3	3,248.6	0.00	0.00	0.00	
10,300.0	90.32	180.69	7,048.9	-2,985.9	1,651.1	3,343.6	0.00	0.00	0.00	
10,400.0	90.32	180.69	7,048.3	-3,085.9	1,649.9	3,438.6	0.00	0.00	0.00	
10,500.0	90.32	180.69	7,047.7	-3,185.9	1,648.7	3,533.7	0.00	0.00	0.00	
10,600.0	90.32	180.69	7,047.2	-3,285.9	1,647.5	3,628.7	0.00	0.00	0.00	
10,700.0	90.32	180.69	7,046.6	-3,385.8	1,646.3	3,723.7	0.00	0.00	0.00	
10,800.0	90.32	180.69	7,046.0	-3,485.8	1,645.1	3,818.7	0.00	0.00	0.00	
10,900.0	90.32	180.69	7,045.5	-3,585.8	1,643.9	3,913.8	0.00	0.00	0.00	
11,000.0	90.32	180.69	7,044.9	-3,685.8	1,642.7	4,008.8	0.00	0.00	0.00	
11,100.0	90.32	180.69	7,044.3	-3,785.8	1,641.5	4,103.8	0.00	0.00	0.00	
11,200.0	90.32	180.69	7,043.8	-3,885.8	1,640.3	4,198.9	0.00	0.00	0.00	
11,300.0	90.32	180.69	7,043.2	-3,985.8	1,639.1	4,293.9	0.00	0.00	0.00	
11,400.0	90.32	180.69	7,042.6	-4,085.8	1,637.9	4,388.9	0.00	0.00	0.00	
11,500.0	90.32	180.69	7,042.1	-4,185.8	1,636.7	4,483.9	0.00	0.00	0.00	
11,600.0	90.32	180.69	7,041.5	-4,285.8	1,635.5	4,579.0	0.00	0.00	0.00	
11,700.0	90.32	180.69	7,040.9	-4,385.8	1,634.3	4,674.0	0.00	0.00	0.00	
11,800.0	90.32	180.69	7,040.4	-4,485.7	1,633.1	4,769.0	0.00	0.00	0.00	
11,900.0	90.32	180.69	7,039.8	-4,585.7	1,631.9	4,864.1	0.00	0.00	0.00	
12,000.0	90.32	180.69	7,039.2	-4,685.7	1,630.6	4,959.1	0.00	0.00	0.00	
12,100.0	90.32	180.69	7,038.7	-4,785.7	1,629.4	5,054.1	0.00	0.00	0.00	
12,200.0	90.32	180.69	7,038.1	-4,885.7	1,628.2	5,149.1	0.00	0.00	0.00	
12,300.0	90.32	180.69	7,037.5	-4,985.7	1,627.0	5,244.2	0.00	0.00	0.00	
12,400.0	90.32	180.69	7,037.0	-5,085.7	1,625.8	5,339.2	0.00	0.00	0.00	
12,482.8	90.32	180.69	7,036.5	-5,168.5	1,624.8	5,417.9	0.00	0.00	0.00	
TD at 12482.8 - BHL 470'FSL, 2120'FWL, SEC.12										

Targets										
Target Name	Dip Angle (°)	Dip Dir. (°)	TVD (ft)	+N/-S (ft)	+E/-W (ft)	Northing (ft)	Easting (ft)	Latitude	Longitude	
LPL 50'FNL, 2120'FW - plan hits target center - Point	0.00	0.00	7,063.5	-408.7	1,682.1	1,429,030.14	3,246,624.86	40.507703	-104.613062	
BHL 470'FSL, 2120'FW - plan hits target center - Point	0.00	0.00	7,036.5	-5,168.5	1,624.8	1,424,270.15	3,246,614.90	40.494638	-104.613269	
SHL 316'FSL, 435'FW - plan hits target center - Point	0.00	0.00	1.0	0.0	0.0	1,429,422.11	3,244,938.85	40.508825	-104.619111	

Casing Points					
Measured Depth (ft)	Vertical Depth (ft)	Name	Casing Diameter (")	Hole Diameter (")	
7,722.6	7,063.5	7"	7	7-1/2	

Database:	EDMNEW	Local Co-ordinate Reference:	Well Wilkinson J-12HN
Company:	Bayswater Exploration & Production, LLC	TVD Reference:	WELL @ 4796.5ft (RKB - 22.5')
Project:	SEC.1-T6N-R65W	MD Reference:	WELL @ 4796.5ft (RKB - 22.5')
Site:	Wilkinson 1-P Pad Sec.1-T6N-R65W	North Reference:	True
Well:	Wilkinson J-12HN	Survey Calculation Method:	Minimum Curvature
Wellbore:	Wellbore #1		
Design:	Plan #1 (7-29-15)		

Plan Annotations				
Measured Depth (ft)	Vertical Depth (ft)	Local Coordinates		Comment
		+N/-S (ft)	+E/-W (ft)	
600.0	600.0	0.0	0.0	KOP - Start Build 1.00
2,314.8	2,289.3	53.0	249.1	Start 4232.5 hold at 2314.8 MD
6,547.3	6,333.6	312.5	1,469.7	Start DLS 8.00 TFO 102.05
7,722.6	7,063.5	-408.7	1,682.1	Start 4760.2 hold at 7722.6 MD
12,482.8	7,036.5	-5,168.5	1,624.8	TD at 12482.8