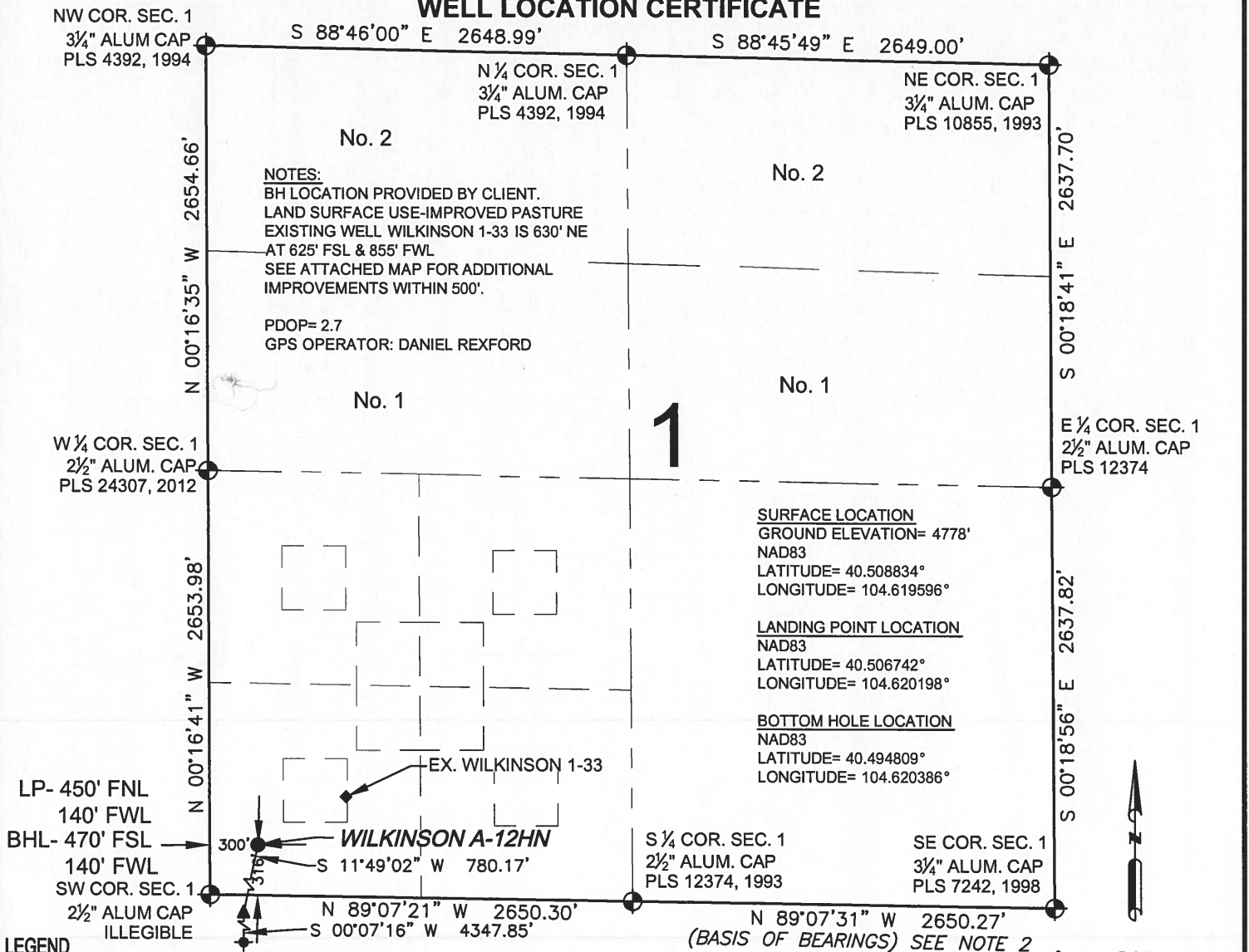


# WILKINSON A-12HN WELL LOCATION CERTIFICATE

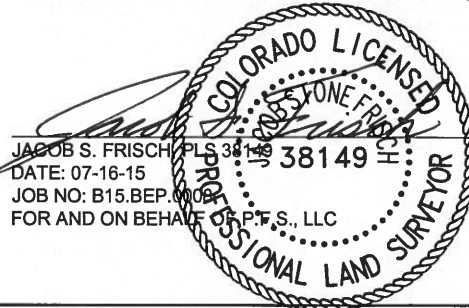




LEGEND

● = EXISTING MONUMENT  
○ = CALCULATED POSITION  
● = PROPOSED WELL  
◆ = EXISTING WELL  
◆ = BOTTOM HOLE  
▲ = LANDING POINT  
LP = LANDING POINT  
BHL = BOTTOM HOLE

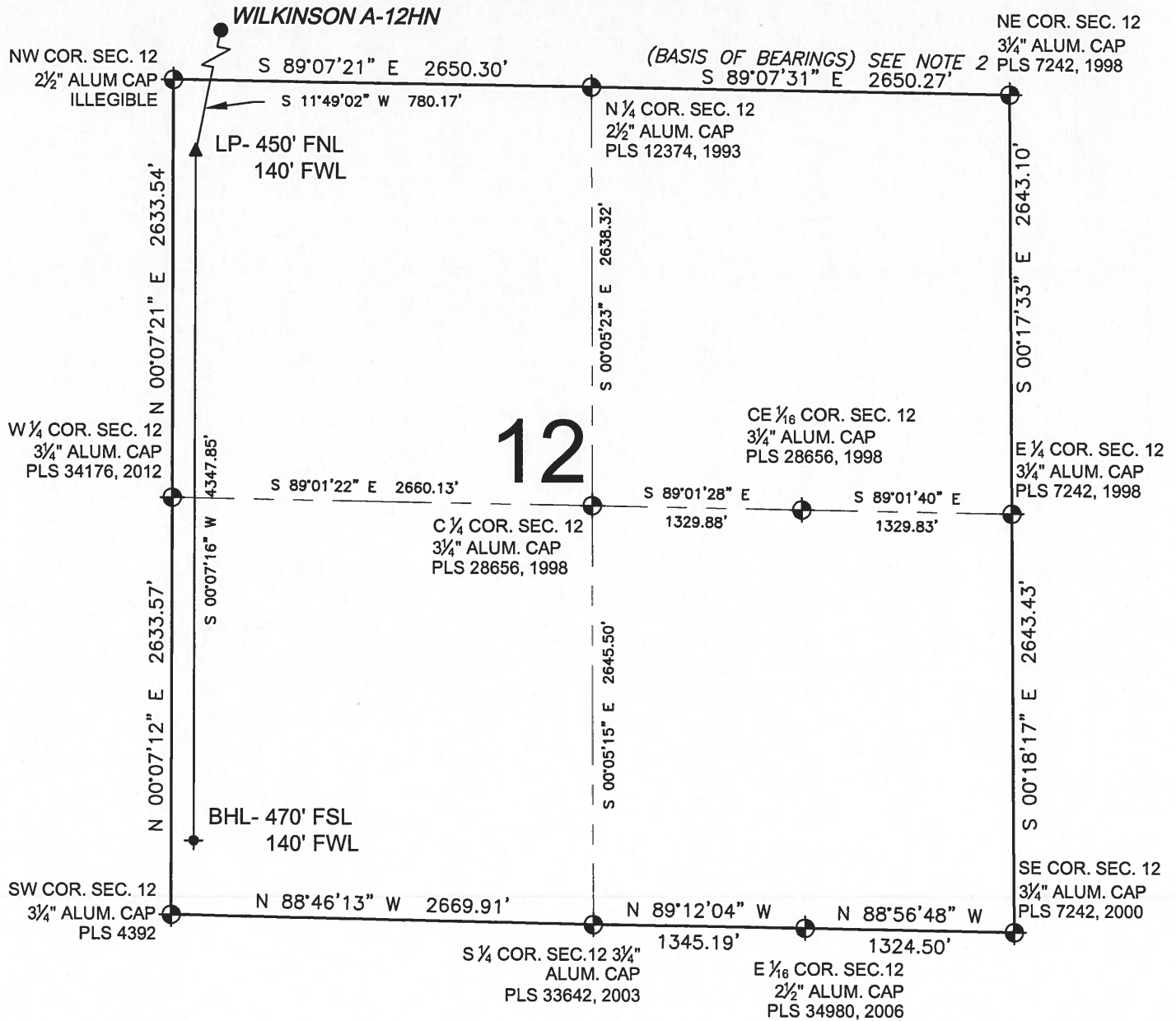
- NOTES:
- THIS FIELD SURVEY CONFORMS TO THE MINIMUM STANDARDS SET BY THE C.O.G.C.C., RULE NO. 215
  - BEARINGS ARE BASED ON THE ASSUMPTION THAT THE SOUTH LINE OF THE SOUTHEAST QUARTER OF SECTION 1, BEARS N89°07'31" W BETWEEN THE MONUMENTS SHOWN HEREON.
  - GRID DISTANCES ARE SHOWN, AS GPS MEASURED IN THE FIELD, WITH TIES TO WELLS MEASURED PERPENDICULAR TO SECTION LINES. TO GET GROUND DISTANCES MULTIPLY THE SHOWN DISTANCE BY 1.000257288.
  - ELEVATIONS SHOWN ARE NAVD 88, AS DERIVED BY GPS OBSERVATIONS.
  - FIELD VERIFICATION OF MONUMENTS COMPLETED WITHIN 1 YEAR OF SIGNATURE DATE.

NOTICE: ACCORDING TO COLORADO LAW YOU MUST COMMENCE ANY LEGAL ACTION BASED UPON ANY DEFECT IN THIS SURVEY WITHIN THREE YEARS AFTER YOU FIRST DISCOVER SUCH DEFECT. IN NO EVENT MAY ANY ACTION BASED UPON ANY DEFECT IN THIS SURVEY BE COMMENCED MORE THAN TEN YEARS FROM THIS SAID DATE OF THIS CERTIFICATION SHOWN HEREON.



PREPARED BY:  Petroleum Field Services, LLC 7535 Hilltop Circle Denver, CO 80221	FIELD DATE: 06-23-15 DRAWING DATE: 07-10-15 BY: CSG CHECKED BY: SNC	WELL NAME: WILKINSON A-12HN SURFACE LOCATION: SW 1/4 SW 1/4, SEC. 1, T6N, R65W, 6TH P.M. WELD COUNTY, COLORADO	PREPARED FOR:  BAYSWATER EXPLORATION AND PRODUCTION, LLC
--	--	--	---

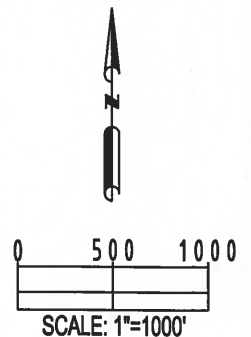
# WILKINSON A-12HN WELL LOCATION CERTIFICATE





## LEGEND

- ⊕ = EXISTING MONUMENT
- = CALCULATED POSITION
- = PROPOSED WELL
- ◆ = EXISTING WELL
- ⬮ = BOTTOM HOLE
- ▲ = LANDING POINT
- LP = LANDING POINT
- BHL = BOTTOM HOLE

JACOB S. FRISCH, PLS 38149  
DATE: 07-16-15  
JOB NO: B15.BEP.0009  
FOR AND ON BEHALF OF P.F.S., LLC



SHEET 2 OF 2

<div>PREPARED BY:</div> <div> <b>PFS</b> Petroleum Field Services, LLC 7535 Hilltop Circle Denver, CO 80221</div>	<div>FIELD DATE:</div> <div>06-23-15</div>		<div>WELL NAME:</div> <div>WILKINSON A-12HN</div>		<div>PREPARED FOR:</div> <div> <b>BAYSWATER</b> EXPLORATION AND PRODUCTION, LLC</div>
	<div>DRAWING DATE:</div> <div>07-10-15</div>		<div>SURFACE LOCATION:</div> <div>SW 1/4 SW 1/4, SEC. 1, T6N, R65W, 6TH P.M.</div>		
	<div>BY:</div> <div>CSG</div>	<div>CHECKED BY:</div> <div>SNC</div>	<div>WELD COUNTY, COLORADO</div>		