

BONANZA CREEK OIL COMPANY

Location: COLORADO Slot: SLOT#01 ANTELOPE 11-41-33HNB (1469'FNL & 390'FWL,SEC.33)
Field: WELD COUNTY Well: ANTELOPE 11-41-33HNB
Facility: SEC.33-T5N-R62W Wellbore: ANTELOPE 11-41-33HNB PWB

Plot reference wellpath is ANTELOPE 11-41-33HNB (REV-8.0) PWP

True vertical depths are referenced to RIG (RKB)

Grid System: NAD83 / Lambert Colorado SP, Northern Zone (501), US feet

Measured depths are referenced to RIG (RKB)

North Reference: True north

RIG (RKB) to Mean Sea Level: 4596 feet

Scale: True distance

Mean Sea Level to Mud line (At Slot: SLOT#01 ANTELOPE 11-41-33HNB (1469'FNL & 390'FWL,SEC.33)): 0 feet

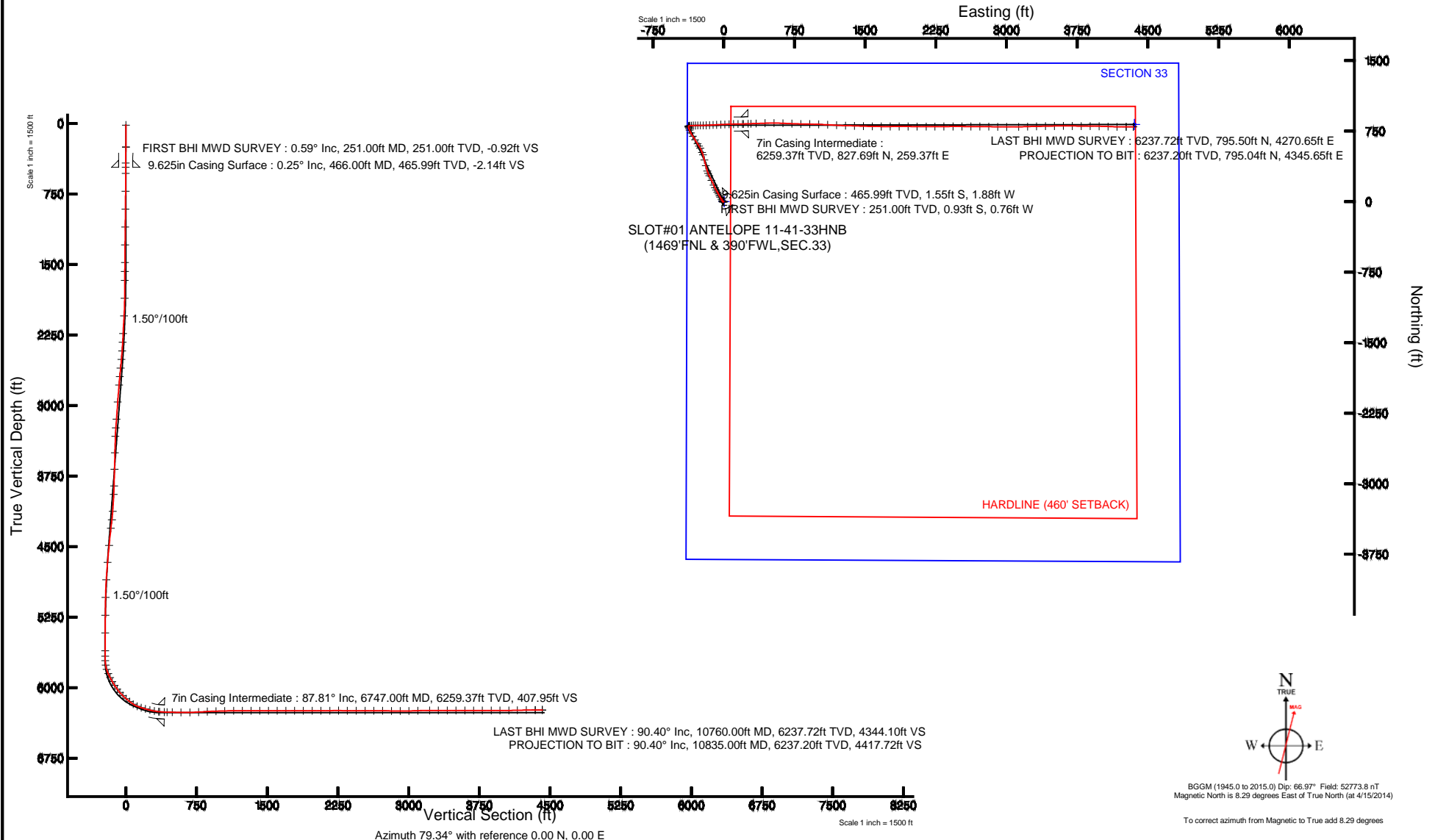
Depths are in feet

Coordinates are in feet referenced to Slot

Created by: guenaler on 10/23/2014

Location Information

Facility Name			Grid East (US ft)	Grid North (US ft)	Latitude	Longitude
SEC.33-T5N-R62W			3324131.293	1375892.189	40°21'33.804"N	104°20'12.696"W
Slot	Local N (ft)	Local E (ft)	Grid East (US ft)	Grid North (US ft)	Latitude	Longitude
SLOT#01 ANTELOPE 11-41-33HNB (1469'FNL & 390'FWL,SEC.33)	0.00	-2.79	3324128.506	1375892.153	40°21'33.804"N	104°20'12.732"W
RIG (RKB) to Mud line (At Slot: SLOT#01 ANTELOPE 11-41-33HNB (1469'FNL & 390'FWL,SEC.33))					4596ft	
Mean Sea Level to Mud line (At Slot: SLOT#01 ANTELOPE 11-41-33HNB (1469'FNL & 390'FWL,SEC.33))					0ft	
RIG (RKB) to Mean Sea Level					4596ft	





Actual Wellpath Report

ANTELOPE 11-41-33HNB AWP

Page 1 of 7



REFERENCE WELLPATH IDENTIFICATION

Operator	BONANZA CREEK OIL COMPANY	Slot	SLOT#01 ANTELOPE 11-41-33HNB (1469'FNL & 390'FWL,SEC.33)
Area	COLORADO	Well	ANTELOPE 11-41-33HNB
Field	WELD COUNTY	Wellbore	ANTELOPE 11-41-33HNB AWB
Facility	SEC.33-T5N-R62W		

REPORT SETUP INFORMATION

Projection System	NAD83 / Lambert Colorado SP, Northern Zone (501), US feet	Software System	WellArchitect® 4.0.0
North Reference	True	User	Guenaler
Scale	0.999959	Report Generated	10/23/2014 at 10:30:41 AM
Convergence at slot	n/a	Database/Source file	WA_Denver/ANTELOPE_11-41-33HNB_AWB.xml

WELLPATH LOCATION

	Local coordinates		Grid coordinates		Geographic coordinates	
	North[ft]	East[ft]	Easting[US ft]	Northing[US ft]	Latitude	Longitude
Slot Location	0.00	-2.79	3324128.51	1375892.15	40°21'33.804"N	104°20'12.732"W
Facility Reference Pt			3324131.29	1375892.19	40°21'33.804"N	104°20'12.696"W
Field Reference Pt			3335925.10	1457282.25	40°34'56.460"N	104°17'26.016"W

WELLPATH DATUM

Calculation method	Minimum curvature	RIG (RKB) to Facility Vertical Datum	4596.00ft
Horizontal Reference Pt	Slot	RIG (RKB) to Mean Sea Level	4596.00ft
Vertical Reference Pt	RIG (RKB)	RIG (RKB) to Mud Line at Slot (SLOT#01 ANTELOPE 11-41-33HNB (1469'FNL & 390'FWL,SEC.33))	4596.00ft
MD Reference Pt	RIG (RKB)	Section Origin	N 0.00, E 0.00 ft
Field Vertical Reference	Mean Sea Level	Section Azimuth	79.34°



Actual Wellpath Report

ANTELOPE 11-41-33HNB AWP

Page 2 of 7



REFERENCE WELLPATH IDENTIFICATION

Operator	BONANZA CREEK OIL COMPANY	Slot	SLOT#01 ANTELOPE 11-41-33HNB (1469'FNL & 390'FWL,SEC.33)
Area	COLORADO	Well	ANTELOPE 11-41-33HNB
Field	WELD COUNTY	Wellbore	ANTELOPE 11-41-33HNB AWB
Facility	SEC.33-T5N-R62W		

WELLPATH DATA (104 stations) † = interpolated/extrapolated station

MD [ft]	Inclination [°]	Azimuth [°]	TVD [ft]	Vert Sect [ft]	North [ft]	East [ft]	Latitude	Longitude	DLS [°/100ft]	Comments
0.00†	0.000	219.370	0.00	0.00	0.00	0.00	40°21'33.804"N	104°20'12.732"W	0.00	
17.00	0.000	219.370	17.00	0.00	0.00	0.00	40°21'33.804"N	104°20'12.732"W	0.00	
251.00	0.590	219.370	251.00	-0.92	-0.93	-0.76	40°21'33.795"N	104°20'12.742"W	0.25	FIRST BHI MWD SURVEY
420.00	0.250	277.850	419.99	-1.94	-1.55	-1.68	40°21'33.789"N	104°20'12.754"W	0.30	
530.00	0.280	245.820	529.99	-2.43	-1.63	-2.16	40°21'33.788"N	104°20'12.760"W	0.14	
721.00	0.400	276.930	720.99	-3.52	-1.74	-3.25	40°21'33.787"N	104°20'12.774"W	0.11	
910.00	0.540	256.890	909.98	-5.04	-1.86	-4.77	40°21'33.786"N	104°20'12.794"W	0.11	
1100.00	0.740	258.530	1099.97	-7.16	-2.31	-6.85	40°21'33.781"N	104°20'12.820"W	0.11	
1290.00	0.420	262.630	1289.96	-9.08	-2.64	-8.74	40°21'33.778"N	104°20'12.845"W	0.17	
1479.00	0.770	297.500	1478.95	-10.77	-2.15	-10.56	40°21'33.783"N	104°20'12.868"W	0.26	
1574.00	1.430	336.870	1573.93	-11.53	-0.76	-11.59	40°21'33.796"N	104°20'12.882"W	1.02	
1670.00	2.310	338.070	1669.88	-12.17	2.13	-12.78	40°21'33.825"N	104°20'12.897"W	0.92	
1859.00	3.040	342.010	1858.67	-13.55	10.43	-15.75	40°21'33.907"N	104°20'12.935"W	0.40	
2047.00	6.960	321.760	2045.93	-19.46	24.13	-24.34	40°21'34.042"N	104°20'13.046"W	2.26	
2236.00	9.900	333.560	2232.88	-29.19	47.68	-38.67	40°21'34.275"N	104°20'13.232"W	1.80	
2331.00	11.910	332.120	2326.16	-34.31	63.66	-46.89	40°21'34.433"N	104°20'13.338"W	2.13	
2425.00	13.000	332.100	2417.95	-40.32	81.57	-56.38	40°21'34.610"N	104°20'13.460"W	1.16	
2520.00	14.250	328.470	2510.28	-47.65	100.98	-67.49	40°21'34.802"N	104°20'13.604"W	1.59	
2614.00	16.310	328.850	2600.95	-56.40	122.14	-80.37	40°21'35.011"N	104°20'13.770"W	2.19	
2709.00	18.550	333.420	2691.59	-65.22	147.08	-94.03	40°21'35.257"N	104°20'13.947"W	2.76	
2804.00	18.650	335.760	2781.63	-72.93	174.44	-107.03	40°21'35.528"N	104°20'14.115"W	0.79	
2993.00	16.400	334.980	2961.84	-86.65	226.18	-130.73	40°21'36.039"N	104°20'14.421"W	1.20	
3182.00	16.270	334.400	3143.21	-100.09	274.24	-153.45	40°21'36.514"N	104°20'14.714"W	0.11	
3280.00	16.660	335.590	3237.19	-106.98	299.41	-165.19	40°21'36.763"N	104°20'14.866"W	0.53	
3373.00	17.700	343.190	3326.05	-111.66	325.09	-174.79	40°21'37.016"N	104°20'14.990"W	2.66	
3559.00	20.090	345.560	3502.02	-116.80	383.10	-190.93	40°21'37.590"N	104°20'15.198"W	1.35	
3745.00	18.840	345.250	3677.39	-121.05	443.08	-206.55	40°21'38.182"N	104°20'15.400"W	0.67	
3931.00	16.640	343.860	3854.53	-125.74	497.71	-221.60	40°21'38.722"N	104°20'15.595"W	1.20	
4024.00	16.290	339.160	3943.72	-129.32	522.69	-229.94	40°21'38.969"N	104°20'15.702"W	1.48	
4211.00	14.200	333.070	4124.14	-140.39	567.66	-249.66	40°21'39.413"N	104°20'15.957"W	1.41	



Actual Wellpath Report

ANTELOPE 11-41-33HNB AWP

Page 3 of 7



REFERENCE WELLPATH IDENTIFICATION			
Operator	BONANZA CREEK OIL COMPANY	Slot	SLOT#01 ANTELOPE 11-41-33HNB (1469'FNL & 390'FWL,SEC.33)
Area	COLORADO	Well	ANTELOPE 11-41-33HNB
Field	WELD COUNTY	Wellbore	ANTELOPE 11-41-33HNB AWB
Facility	SEC.33-T5N-R62W		

WELLPATH DATA (104 stations)

MD [ft]	Inclination [°]	Azimuth [°]	TVD [ft]	Vert Sect [ft]	North [ft]	East [ft]	Latitude	Longitude	DLS [°/100ft]	Comments
4306.00	17.930	328.060	4215.42	-148.97	590.47	-262.68	40°21'39.639"N	104°20'16.125"W	4.19	
4400.00	17.170	327.560	4305.05	-159.37	614.46	-277.78	40°21'39.876"N	104°20'16.320"W	0.82	
4589.00	14.350	327.840	4486.92	-178.31	657.84	-305.21	40°21'40.305"N	104°20'16.675"W	1.49	
4774.00	12.790	327.290	4666.75	-194.40	694.48	-328.48	40°21'40.667"N	104°20'16.975"W	0.85	
4964.00	12.120	332.060	4852.29	-208.23	729.80	-349.20	40°21'41.016"N	104°20'17.243"W	0.65	
5154.00	7.610	341.480	5039.44	-215.88	759.36	-362.54	40°21'41.308"N	104°20'17.415"W	2.51	
5345.00	4.660	343.830	5229.33	-218.36	778.81	-368.72	40°21'41.500"N	104°20'17.495"W	1.55	
5534.00	2.880	345.960	5417.91	-219.37	790.79	-372.01	40°21'41.618"N	104°20'17.538"W	0.94	
5724.00	2.190	348.830	5607.72	-219.69	798.98	-373.88	40°21'41.699"N	104°20'17.562"W	0.37	
5782.00	1.900	349.800	5665.69	-219.69	801.02	-374.26	40°21'41.719"N	104°20'17.567"W	0.50	
5829.00	2.220	6.720	5712.66	-219.41	802.69	-374.29	40°21'41.736"N	104°20'17.567"W	1.45	
5878.00	8.670	69.180	5761.43	-215.49	804.95	-370.72	40°21'41.758"N	104°20'17.521"W	16.10	
5924.00	17.930	83.410	5806.16	-204.99	807.00	-360.42	40°21'41.778"N	104°20'17.388"W	21.20	
5972.00	23.880	87.760	5850.98	-187.99	808.23	-343.36	40°21'41.791"N	104°20'17.168"W	12.80	
6019.00	27.190	88.840	5893.39	-167.98	808.82	-323.11	40°21'41.796"N	104°20'16.906"W	7.11	
6067.00	30.760	88.610	5935.37	-145.04	809.34	-299.87	40°21'41.802"N	104°20'16.606"W	7.44	
6114.00	33.300	88.450	5975.22	-120.44	809.98	-274.95	40°21'41.808"N	104°20'16.284"W	5.41	
6162.00	36.810	89.090	6014.50	-93.25	810.56	-247.39	40°21'41.814"N	104°20'15.928"W	7.35	
6209.00	41.230	88.930	6051.01	-64.08	811.07	-217.81	40°21'41.819"N	104°20'15.546"W	9.41	
6257.00	44.840	88.170	6086.09	-31.75	811.91	-185.07	40°21'41.827"N	104°20'15.123"W	7.60	
6304.00	49.430	87.470	6118.05	2.31	813.23	-150.66	40°21'41.840"N	104°20'14.678"W	9.83	
6353.00	52.420	87.350	6148.94	39.97	814.95	-112.66	40°21'41.857"N	104°20'14.187"W	6.10	
6399.00	57.600	86.950	6175.30	77.30	816.83	-75.04	40°21'41.876"N	104°20'13.701"W	11.28	
6448.00	67.120	86.870	6198.01	120.28	819.16	-31.74	40°21'41.899"N	104°20'13.142"W	19.43	
6494.00	73.810	88.080	6213.38	163.17	821.06	11.54	40°21'41.918"N	104°20'12.583"W	14.75	
6541.00	75.200	87.830	6225.94	207.95	822.68	56.80	40°21'41.933"N	104°20'11.998"W	3.00	
6590.00	75.500	88.370	6238.33	254.80	824.25	104.19	40°21'41.949"N	104°20'11.386"W	1.23	
6638.00	79.560	89.260	6248.70	301.02	825.22	151.03	40°21'41.959"N	104°20'10.781"W	8.65	
6685.00	84.000	88.770	6255.41	346.86	826.02	197.53	40°21'41.966"N	104°20'10.180"W	9.50	
6696.00	85.550	88.620	6256.42	357.67	826.27	208.48	40°21'41.969"N	104°20'10.039"W	14.16	



Actual Wellpath Report

ANTELOPE 11-41-33HNB AWP

Page 4 of 7



REFERENCE WELLPATH IDENTIFICATION				
Operator	BONANZA CREEK OIL COMPANY	Slot	SLOT#01 ANTELOPE 11-41-33HNB (1469'FNL & 390'FWL,SEC.33)	
Area	COLORADO	Well	ANTELOPE 11-41-33HNB	
Field	WELD COUNTY	Wellbore	ANTELOPE 11-41-33HNB AWB	
Facility	SEC.33-T5N-R62W			

WELLPATH DATA (104 stations)										
MD [ft]	Inclination [°]	Azimuth [°]	TVD [ft]	Vert Sect [ft]	North [ft]	East [ft]	Latitude	Longitude	DLS [°/100ft]	Comments
6777.00	89.140	87.920	6260.17	437.59	828.71	289.34	40°21'41.993"N	104°20'08.994"W	4.52	
6831.00	87.950	87.930	6261.54	490.97	830.67	343.29	40°21'42.012"N	104°20'08.297"W	2.20	
6926.00	89.260	87.930	6263.85	584.87	834.10	438.20	40°21'42.046"N	104°20'07.071"W	1.38	
7021.00	91.510	90.040	6263.21	678.52	835.78	533.17	40°21'42.063"N	104°20'05.844"W	3.25	
7116.00	93.230	93.080	6259.28	771.27	833.20	628.04	40°21'42.037"N	104°20'04.619"W	3.67	
7211.00	92.960	92.230	6254.15	863.59	828.80	722.80	40°21'41.994"N	104°20'03.395"W	0.94	
7306.00	91.970	90.920	6250.07	956.34	826.19	817.67	40°21'41.968"N	104°20'02.169"W	1.73	
7401.00	91.300	91.180	6247.36	1049.33	824.45	912.62	40°21'41.951"N	104°20'00.943"W	0.76	
7496.00	90.520	92.140	6245.85	1142.13	821.70	1007.56	40°21'41.924"N	104°19'59.716"W	1.30	
7591.00	89.880	92.980	6245.52	1234.61	817.46	1102.47	40°21'41.882"N	104°19'58.490"W	1.11	
7686.00	90.000	93.330	6245.62	1326.86	812.23	1197.32	40°21'41.830"N	104°19'57.265"W	0.39	
7781.00	89.970	91.550	6245.64	1419.39	808.19	1292.23	40°21'41.790"N	104°19'56.039"W	1.87	
7876.00	89.750	91.430	6245.87	1512.26	805.72	1387.20	40°21'41.765"N	104°19'54.812"W	0.26	
7970.00	89.880	91.960	6246.18	1604.09	802.94	1481.16	40°21'41.738"N	104°19'53.598"W	0.58	
8066.00	90.120	91.280	6246.18	1697.89	800.22	1577.12	40°21'41.711"N	104°19'52.359"W	0.75	
8161.00	90.280	90.100	6245.84	1791.03	799.08	1672.11	40°21'41.700"N	104°19'51.132"W	1.25	
8255.00	89.440	89.850	6246.07	1883.42	799.12	1766.11	40°21'41.700"N	104°19'49.917"W	0.93	
8351.00	89.970	89.850	6246.57	1977.81	799.37	1862.11	40°21'41.702"N	104°19'48.677"W	0.55	
8445.00	90.250	90.230	6246.39	2070.17	799.30	1956.10	40°21'41.702"N	104°19'47.463"W	0.50	
8540.00	91.540	90.860	6244.90	2163.35	798.40	2051.09	40°21'41.693"N	104°19'46.236"W	1.51	
8636.00	89.350	89.800	6244.16	2257.58	797.85	2147.07	40°21'41.687"N	104°19'44.996"W	2.53	
8730.00	89.050	89.640	6245.47	2350.03	798.31	2241.06	40°21'41.692"N	104°19'43.782"W	0.36	
8825.00	89.810	89.700	6246.42	2443.49	798.85	2336.06	40°21'41.697"N	104°19'42.555"W	0.80	
8921.00	90.400	89.830	6246.24	2537.91	799.25	2432.06	40°21'41.701"N	104°19'41.315"W	0.63	
9016.00	90.220	90.230	6245.73	2631.26	799.20	2527.05	40°21'41.700"N	104°19'40.087"W	0.46	
9111.00	89.410	89.960	6246.03	2724.59	799.04	2622.05	40°21'41.699"N	104°19'38.860"W	0.90	
9206.00	89.010	90.230	6247.34	2817.91	798.88	2717.04	40°21'41.697"N	104°19'37.633"W	0.51	
9301.00	89.600	91.690	6248.50	2910.96	797.29	2812.02	40°21'41.681"N	104°19'36.406"W	1.66	
9396.00	91.510	91.000	6247.58	3003.87	795.06	2906.98	40°21'41.659"N	104°19'35.179"W	2.14	
9491.00	91.510	89.780	6245.07	3097.08	794.42	3001.95	40°21'41.652"N	104°19'33.953"W	1.28	



Actual Wellpath Report

ANTELOPE 11-41-33HNB AWP

Page 5 of 7



REFERENCE WELLPATH IDENTIFICATION			
Operator	BONANZA CREEK OIL COMPANY	Slot	SLOT#01 ANTELOPE 11-41-33HNB (1469'FNL & 390'FWL,SEC.33)
Area	COLORADO	Well	ANTELOPE 11-41-33HNB
Field	WELD COUNTY	Wellbore	ANTELOPE 11-41-33HNB AWB
Facility	SEC.33-T5N-R62W		

WELLPATH DATA (104 stations)										
MD [ft]	Inclination [°]	Azimuth [°]	TVD [ft]	Vert Sect [ft]	North [ft]	East [ft]	Latitude	Longitude	DLS [°/100ft]	Comments
9618.00	90.730	89.000	6242.59	3222.10	795.77	3128.91	40°21'41.666"N	104°19'32.313"W	0.87	
9713.00	89.530	88.300	6242.37	3315.85	798.01	3223.89	40°21'41.688"N	104°19'31.086"W	1.46	
9808.00	89.660	88.730	6243.05	3409.63	800.47	3318.85	40°21'41.712"N	104°19'29.859"W	0.47	
9903.00	90.000	88.550	6243.33	3503.38	802.72	3413.82	40°21'41.734"N	104°19'28.632"W	0.40	
9998.00	90.000	89.560	6243.33	3597.02	804.29	3508.81	40°21'41.749"N	104°19'27.405"W	1.06	
10093.00	90.030	89.950	6243.30	3690.46	804.70	3603.81	40°21'41.753"N	104°19'26.178"W	0.41	
10187.00	90.620	90.420	6242.77	3782.78	804.39	3697.81	40°21'41.750"N	104°19'24.964"W	0.80	
10283.00	89.600	90.320	6242.58	3877.00	803.77	3793.80	40°21'41.744"N	104°19'23.724"W	1.07	
10378.00	90.030	90.350	6242.89	3970.26	803.22	3888.80	40°21'41.738"N	104°19'22.496"W	0.45	
10473.00	90.460	91.320	6242.49	4063.36	801.83	3983.79	40°21'41.724"N	104°19'21.269"W	1.12	
10567.00	91.600	92.450	6240.80	4155.09	798.74	4077.72	40°21'41.694"N	104°19'20.056"W	1.71	
10663.00	90.830	90.530	6238.76	4248.92	796.25	4173.66	40°21'41.669"N	104°19'18.817"W	2.15	
10760.00	90.400	90.350	6237.72	4344.10	795.50	4270.65	40°21'41.661"N	104°19'17.564"W	0.48	LAST BHI MWD SURVEY
10835.00	90.400	90.350	6237.20	4417.72	795.04	4345.65	40°21'41.657"N	104°19'16.595"W	0.00	PROJECTION TO BIT

HOLE & CASING SECTIONS - Ref Wellbore: ANTELOPE 11-41-33HNB AWB Ref Wellpath: ANTELOPE 11-41-33HNB AWP									
String/Diameter	Start MD [ft]	End MD [ft]	Interval [ft]	Start TVD [ft]	End TVD [ft]	Start N/S [ft]	Start E/W [ft]	End N/S [ft]	End E/W [ft]
13.5in Open Hole	145.00	478.00	333.00	145.00	477.99	-0.28	-0.23	-1.56	-1.93
9.625in Casing Surface	17.00	466.00	449.00	17.00	465.99	0.00	0.00	-1.55	-1.88
8.75in Open Hole	478.00	6758.00	6280.00	477.99	6259.74	-1.56	-1.93	828.05	270.36
7in Casing Intermediate	17.00	6747.00	6730.00	17.00	6259.37	0.00	0.00	827.69	259.37
6.125in Open Hole	6758.00	10835.00	4077.00	6259.74	6237.20	828.05	270.36	795.04	4345.65



Actual Wellpath Report

ANTELOPE 11-41-33HNB AWP

Page 6 of 7



REFERENCE WELLPATH IDENTIFICATION			
Operator	BONANZA CREEK OIL COMPANY	Slot	SLOT#01 ANTELOPE 11-41-33HNB (1469'FNL & 390'FWL,SEC.33)
Area	COLORADO	Well	ANTELOPE 11-41-33HNB
Field	WELD COUNTY	Wellbore	ANTELOPE 11-41-33HNB AWB
Facility	SEC.33-T5N-R62W		

TARGETS									
Name	MD [ft]	TVD [ft]	North [ft]	East [ft]	Grid East [US ft]	Grid North [US ft]	Latitude	Longitude	Shape
ANTELOPE 11-41-33HNB SECTION 33		0.00	0.00	2.79	3324131.29	1375892.19	40°21'33.804"N	104°20'12.696"W	polygon
ANTELOPE 11-41-33HNB BHL REV-1 (654'FNL & 470'FEL,SEC.33)		6246.00	820.08	4358.56	3328475.74	1376769.29	40°21'41.904"N	104°19'16.428"W	point
ANTELOPE 11-41-33HNB HARDLINE (460' SETBACK)		6246.00	0.00	2.79	3324131.29	1375892.19	40°21'33.804"N	104°20'12.696"W	polygon
ANTELOPE 11-41-33HNB BHL REV-2 (654'FNL & 470'FEL,SEC.33)		6266.00	820.08	4358.56	3328475.74	1376769.29	40°21'41.904"N	104°19'16.428"W	point
RANCH 1-70 500'R		7075.00	-1469.14	2422.79	3326570.25	1374454.98	40°21'19.285"N	104°19'41.437"W	circle

WELLPATH COMPOSITION - Ref Wellbore: ANTELOPE 11-41-33HNB AWB					Ref Wellpath: ANTELOPE 11-41-33HNB AWP	
Start MD [ft]	End MD [ft]	Positional Uncertainty Model	Log Name/Comment		Wellbore	
17.00	6777.00	NaviTrak (Standard)	BHI/Navitrak MWD 8.75" Hole <17'-6777'>		ANTELOPE 11-41-33HNB AWB	
6777.00	10760.00	NaviTrak (Standard)	BHI/Navitrak MWD 6.125" Hole <6831'-8161'>		ANTELOPE 11-41-33HNB AWB	
10760.00	10835.00	Blind Drilling (std)	Projection to bit		ANTELOPE 11-41-33HNB AWB	



Actual Wellpath Report
ANTELOPE 11-41-33HNB AWP
Page 7 of 7



REFERENCE WELLPATH IDENTIFICATION			
Operator	BONANZA CREEK OIL COMPANY	Slot	SLOT#01 ANTELOPE 11-41-33HNB (1469'FNL & 390'FWL,SEC.33)
Area	COLORADO	Well	ANTELOPE 11-41-33HNB
Field	WELD COUNTY	Wellbore	ANTELOPE 11-41-33HNB AWB
Facility	SEC.33-T5N-R62W		

WELLPATH COMMENTS				
MD [ft]	Inclination [°]	Azimuth [°]	TVD [ft]	Comment
251.00	0.590	219.370	251.00	FIRST BHI MWD SURVEY
10760.00	90.400	90.350	6237.72	LAST BHI MWD SURVEY
10835.00	90.400	90.350	6237.20	PROJECTION TO BIT