

# SILVERBACK 1 WELL LOCATION CERTIFICATE

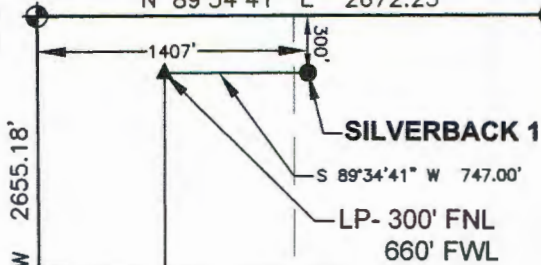
NW COR. SEC. 36  
3/4" ALUM. CAP  
PLS 22098, 2000

N 89°34'41" E 2672.23'

N 89°34'41" E 2672.23'

NE COR. SEC. 36  
2 1/2" ALUM. CAP  
PLS 17492, 2010

N 1/4 COR. SEC. 36  
2 1/2" ALUM. CAP  
PLS 38304, 2015



SURFACE LOCATION  
GROUND ELEVATION= 5282'  
NAD83  
LATITUDE= 40.972551°  
LONGITUDE= 104.272216°

LANDING POINT LOCATION  
NAD83  
LATITUDE= 40.972564°  
LONGITUDE= 104.274921°

BOTTOM HOLE LOCATION  
NAD83  
LATITUDE= 40.945124°  
LONGITUDE= 104.275243°

W 1/4 COR. SEC. 36  
3/4" ALUM. CAP  
PLS 22098, 2000

N 00°32'15" W 2655.18'

N 00°00'10" E 2655.08'

S 00°16'53" E 9998.57'

SW COR. SEC. 36  
3/4" ALUM. CAP  
PLS 22098, 1994

BHL- 300' FSL  
660' FWL

S 89°33'12" W 2647.50'

S 1/4 COR. SEC. 36  
2 1/2" ALUM. CAP  
PLS 38304, 2015

S 89°33'12" W 2647.50'  
(BASIS OF BEARINGS) SEE NOTE 2

E 1/4 COR. SEC. 36  
2 1/2" ALUM. CAP  
PLS 38304, 2015

S 00°15'59" W 2654.13'

S 00°15'59" W 2654.13'

SE COR. SEC. 36  
3/4" ALUM. CAP  
PLS 22098, 1994

NOTES:  
BH LOCATION PROVIDED BY CLIENT.  
LAND SURFACE USE-DRY LAND CROP  
SEE ATTACHED MAP FOR ADDITIONAL  
IMPROVEMENTS WITHIN 500'.

PDOP= 2.1  
GPS OPERATOR: CHARLIE SCOTT

## LEGEND

- ⊕ = EXISTING MONUMENT
- = CALCULATED POSITION
- = PROPOSED WELL
- ◆ = EXISTING WELL
- ⬮ = BOTTOM HOLE
- ▲ = LANDING POINT
- LP = LANDING POINT
- BHL = BOTTOM HOLE

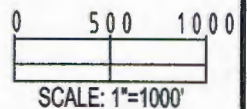
## NOTES:

1. THIS FIELD SURVEY CONFORMS TO THE MINIMUM STANDARDS SET BY THE C.O.G.C.C., RULE NO. 215
2. BEARINGS AND DISTANCE SHOWN HEREON ARE GRID AND BASED ON THE COLORADO STATE PLANE COORDINATE SYSTEM, NAD 83/2011 BETWEEN MONUMENTS AS LABELED HEREON AND ELEVATIONS SHOWN ARE NAVD 88, AS DERIVED BY GPS OBSERVATIONS.
3. GRID DISTANCES ARE SHOWN, AS MEASURED IN THE FIELD, WITH TIES TO WELLS MEASURED PERPENDICULAR TO SECTION LINES.

## WELL SILVERBACK 1 TO BE LOCATED 300' FNL AND 1407' FWL

I, MICHAEL L. POOL, A LICENSED PROFESSIONAL LAND SURVEYOR IN THE STATE OF COLORADO DO HEREBY CERTIFY TO **EXTRACTION OIL & GAS**, THAT THE SURVEY AND WELL LOCATION CERTIFICATE SHOWN HEREON WERE DONE BY ME OR UNDER MY DIRECT SUPERVISION AND THAT THE DRAWING SHOWN HEREON ACCURATELY DEPICTS THE PROPOSED LOCATION OF THE WELL. THIS CERTIFICATE DOES NOT REPRESENT A LAND SURVEY PLAT OR IMPROVEMENT SURVEY PLAT AS DEFINED BY C.R.S. 38-51-102 AND CANNOT BE RELIED UPON TO DETERMINE OWNERSHIP.

MICHAEL L. POOL, PLS 38304  
COLORADO LICENSED PROFESSIONAL LAND SURVEYOR  
FOR AND ON BEHALF OF P.F.S., LLC



NOTICE: ACCORDING TO COLORADO LAW YOU MUST COMMENCE ANY LEGAL ACTION BASED UPON ANY DEFECT IN THIS SURVEY WITHIN THREE YEARS AFTER YOU FIRST DISCOVER SUCH DEFECT. IN NO EVENT MAY ANY ACTION BASED UPON ANY DEFECT IN THIS SURVEY BE COMMENCED MORE THAN TEN YEARS FROM THIS SAID DATE OF THIS CERTIFICATION SHOWN HEREON.

PREPARED BY:



FIELD DATE:  
09-30-15

DRAWING DATE:  
10-01-15

BY:  
JWJ

CHECKED BY:  
KAD

WELL NAME:

SILVERBACK 1

SURFACE LOCATION:

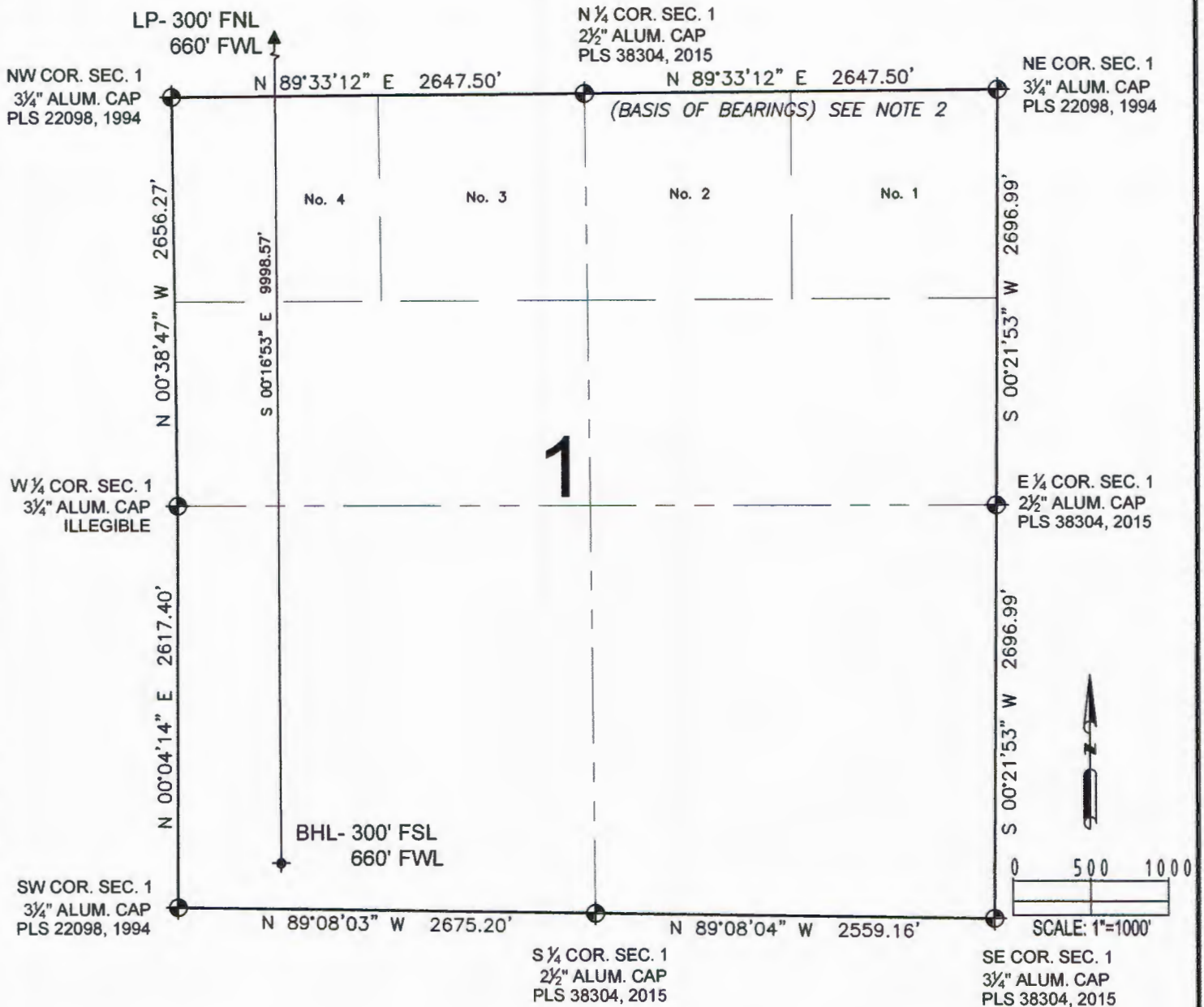
NE 1/4 NW 1/4 SEC. 36, T12N, R62W, 6TH P.M.  
WELD COUNTY, COLORADO

PREPARED FOR:



SHEET 1 OF 2

# SILVERBACK 1 WELL LOCATION CERTIFICATE



## LEGEND

- ⊕ = EXISTING MONUMENT      ◆ = BOTTOM HOLE
- = CALCULATED POSITION    ▲ = LANDING POINT
- = PROPOSED WELL        LP = LANDING POINT
- ◆ = EXISTING WELL        BHL = BOTTOM HOLE

MICHAEL L. POOL, PLS 38304  
COLORADO LICENSED PROFESSIONAL LAND SURVEYOR  
FOR AND ON BEHALF OF P.F.S., LLC



SHEET 2 OF 2

PREPARED BY:



FIELD DATE:  
09-30-15

DRAWING DATE:  
10-01-15

BY:  
JWJ

CHECKED BY:  
KAD

WELL NAME:

SILVERBACK 1

SURFACE LOCATION:

NE 1/4 NW 1/4 SEC. 36, T12N, R62W, 6TH P.M.  
WELD COUNTY, COLORADO

PREPARED FOR:

