

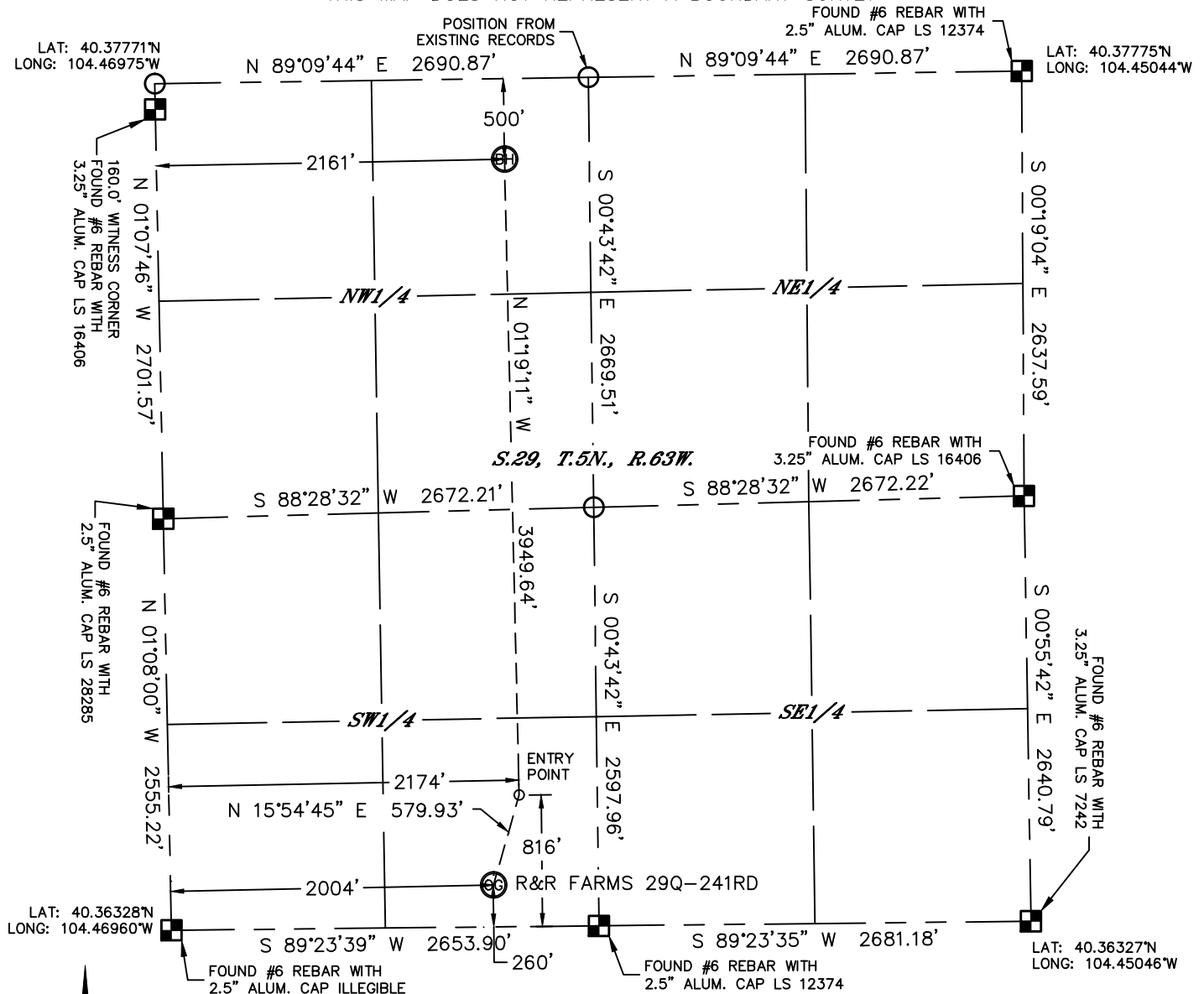


Lat40°, Inc. 6250 W. 10th Street, Unit 2, Greeley, CO 970-515-5294

# WELL LOCATION CERTIFICATE

SECTION: 29  
TOWNSHIP: 5N  
RANGE: 63W

THIS MAP DOES NOT REPRESENT A BOUNDARY SURVEY



In accordance with a request from Thomas Bragg with PDC ENERGY, INC.

Lat40°, Inc. has determined the surface location of the R&R FARMS 29Q-241RD to be 260' from the SOUTH line and 2004' from the WEST line and the bottom hole to be 500' from the NORTH line and 2161' from the WEST line as measured at right angles from the section lines of Section 29, Township 5 North, Range 63 West of the Sixth Principal Meridian, County of Weld, State of Colorado.

I hereby state that this Well Location Certificate was prepared by me, or under my direct supervision, that the fieldwork was completed on 8/4/2014, for and on behalf of PDC ENERGY, INC. That this is not a Land Survey Plat or an Improvement Survey Plat, and that it is not to be relied upon for establishment of fence, building, or other future improvement lines.

## NOTE:

- 1) Bearings shown are Grid Bearings of the Colorado State Plane Coordinate System, North Zone, North American Datum 1983. The lineal dimensions as contained herein are based upon the "U.S. Survey Foot."
- 2) Ground elevations are based on an observed GPS elevation (NAVD 1988 DATUM).
- 3) IMPROVEMENTS: See LOCATION DRAWING for all visible improvements within 500' of disturbed area.
- 4) SURFACE USE: CROP LAND
- 5) INSTRUMENT OPERATOR: ADAM BEAUPREZ
- 6) NEAREST CULTURAL ITEMS:  
BUILDING: ±513' SE  
BUILDING UNIT: ±561' SE  
HIGH OCCUPANCY BUILDING UNIT: +5280'  
DESIGNATED OUTSIDE ACTIVITY AREA: +5280'  
PUBLIC ROAD: ±246' S (CR 52)  
ABOVEGROUND UTILITY: ±280' S  
RAILROAD: +5280'  
PROPERTY LINE: ±260' S

## SURFACE LOCATION

LAT: 40.36399°N  
LONG: 104.46241°W  
PDOP: <6  
ELEV: ±4573'  
1/4,1/4: SESW

## BOTTOM HOLE

LAT: 40.37635°N  
LONG: 104.46198°W

## ENTRY POINT

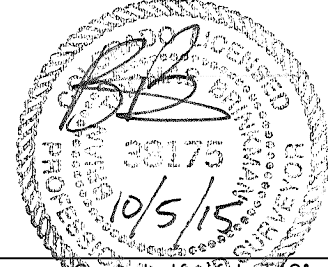
LAT: 40.36551°N  
LONG: 104.46182°W

## LEGEND

- = ALIQUOT MONUMENT AS DESCRIBED  
○ = CALCULATED POSITION

Brian T. Brinkman—On behalf of Lat40°, Inc.  
Colorado Licensed Professional  
Land Surveyor No. 38175

DATE: 10/5/2015  
PROJECT#: 2014131



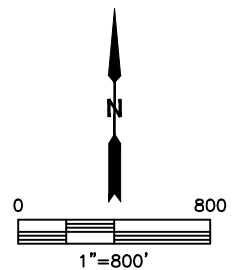
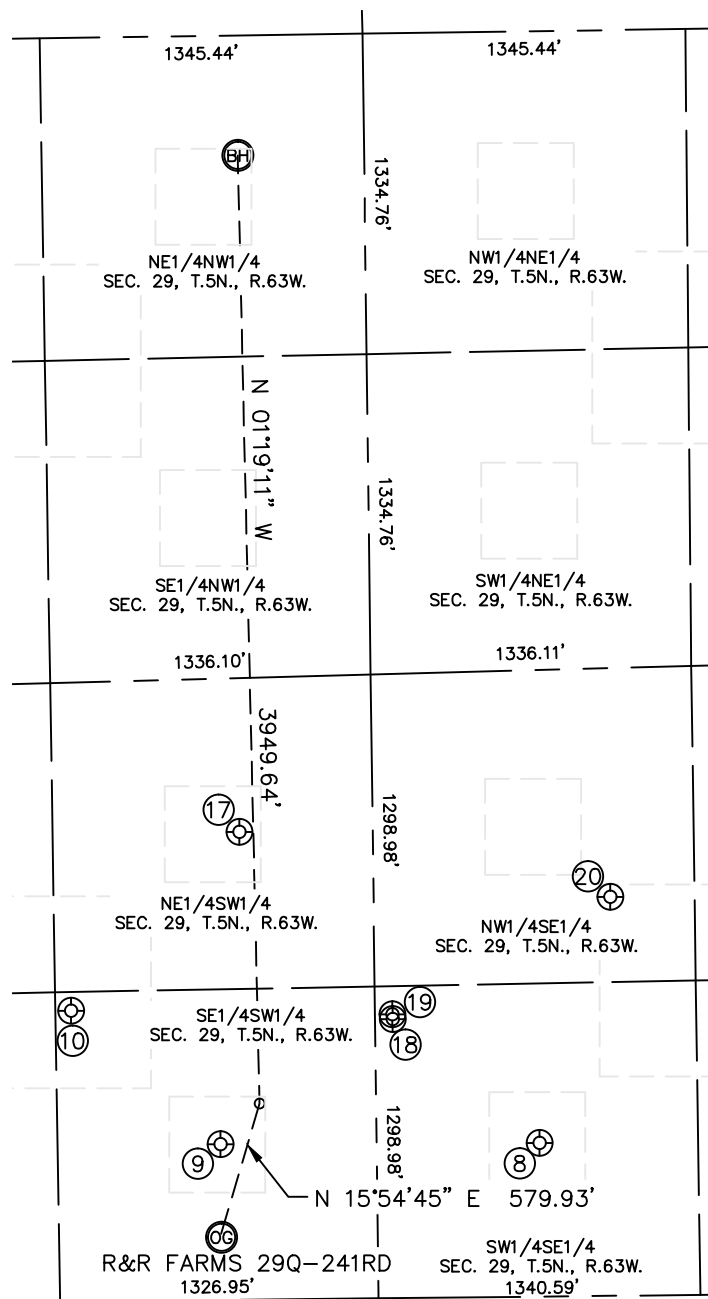


Lat40°, Inc. 6250 W. 10th Street, Unit 2, Greeley, CO 970-515-5294

## SITE SKETCH

R&R FARMS 29Q-241RD

SECTION: 29  
TOWNSHIP: 5N  
RANGE: 63W



WELL NO.	WELL NAME	SHL FOOTAGE			SHL LAT°	SHL LONG°	PDOP	ELEV (FT.)	1/4/1/4	
8	SIEBRING 34-29U	640	FSL	2000	FEL	40.36503	-104.45764	2.8	4572	SWSE
9	ROTHE 24-29U	649	FSL	2007	FWL	40.36506	-104.46241	2.2	4573	SESW
10	ROTHE 29BU	1210	FSL	1396	FWL	40.36660	-104.46462	1.7	4565	SESW
17	ROTHE 23-29U	1948	FSL	2112	FWL	40.36862	-104.46207	1.7	4566	NESW
18	SIEBRING 29PU	1161	FSL	2605	FEL	40.36646	-104.45982	1.6	4571	SWSE
19	SIEBRING 33-29DU	1182	FSL	2605	FEL	40.36652	-104.45982	3.3	4571	SWSE
20	WEST HARDIN 1	1661	FSL	1690	FEL	40.36783	-104.45654	1.7	4560	NWSE

DATE: 10/5/2015  
PROJECT#: 2014131