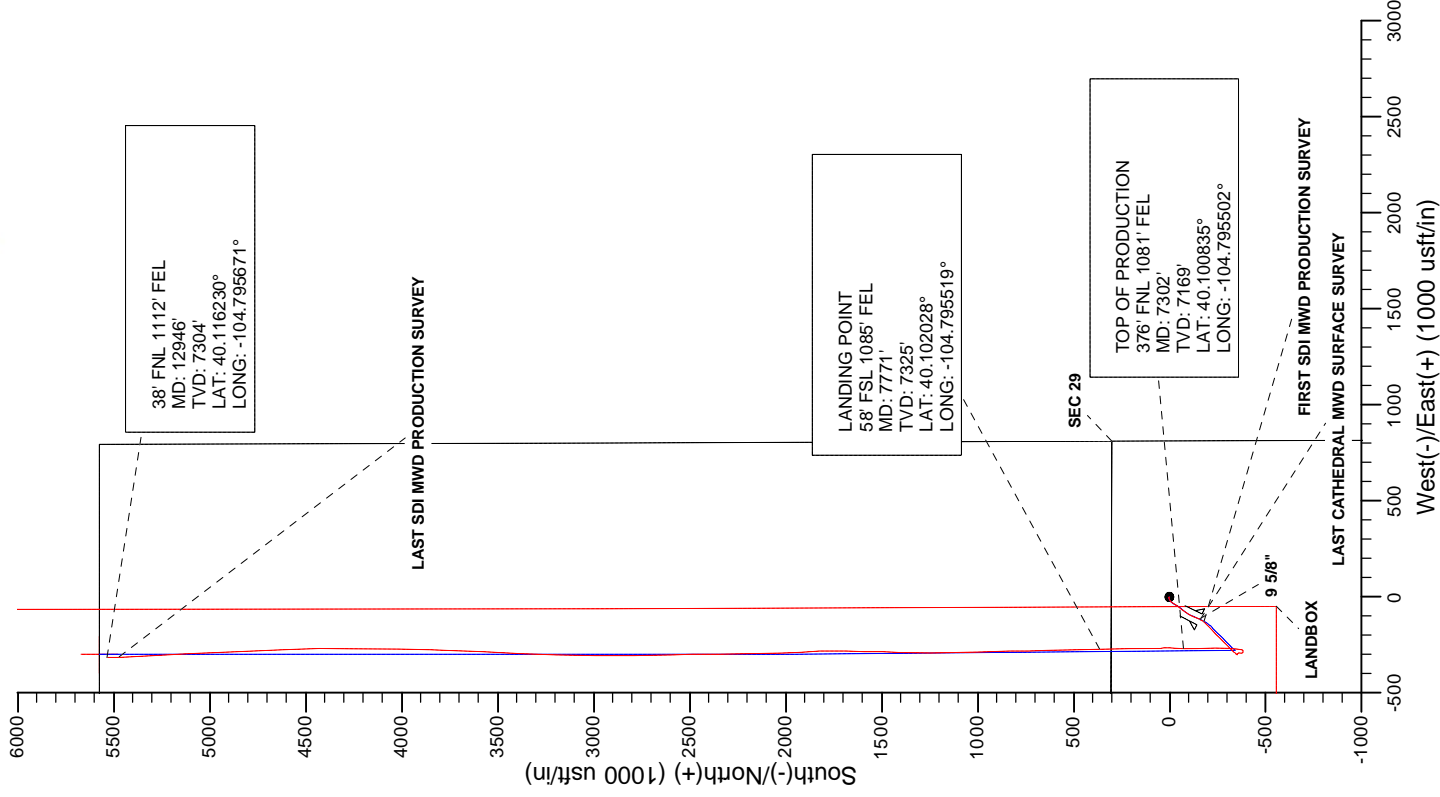
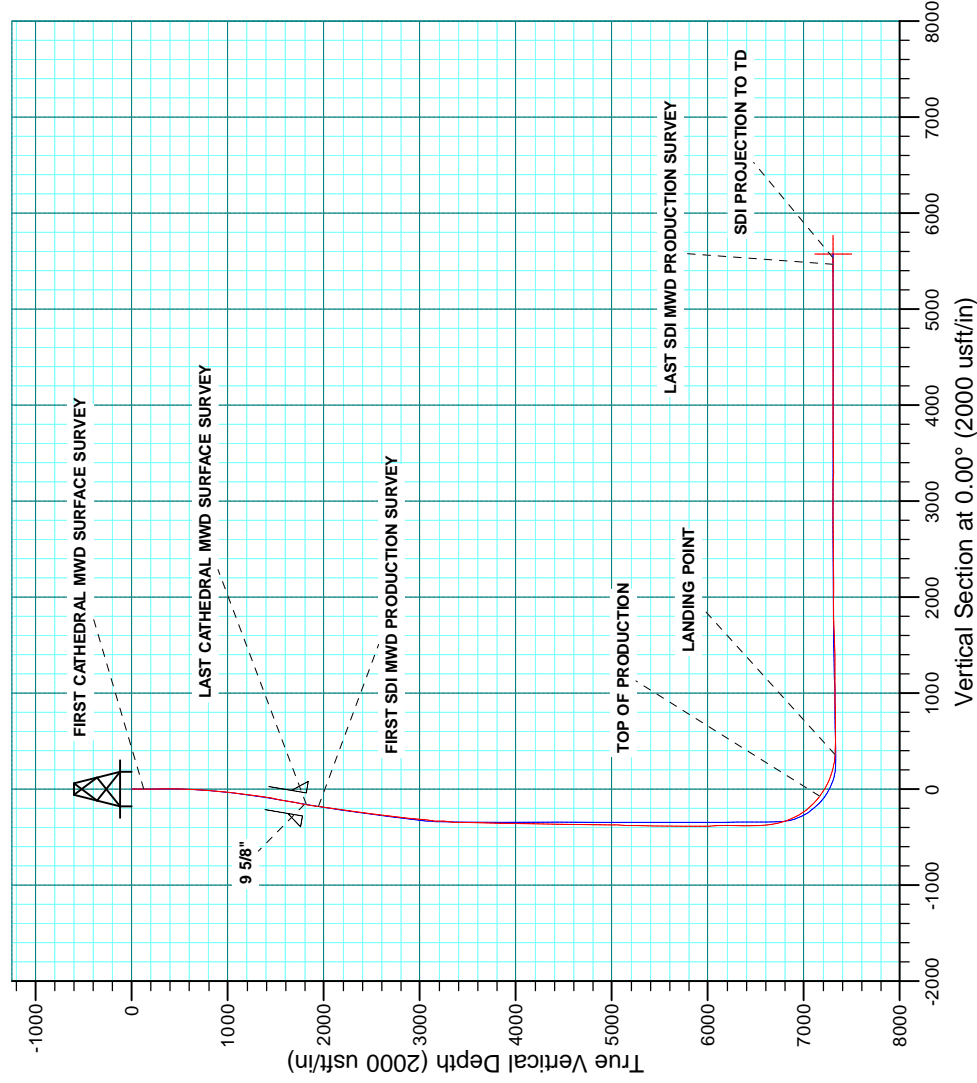


WELL DETAILS: FEHRN 37N-29HZ				
GL 4926 & KB 20 @ 4946.00usft (PRECISION 461)				
+N/-S	+E/-W	Northing	Easting	Latitude
0.00	0.00	14563589.25	1697869.67	40.101030
Longitude				
-104.794545				

PROJECT DETAILS: WELD-NAD83-UTMFT13N	
Geodetic System: Universal Transverse Mercator (US Survey Feet)	
Datum: North American Datum 1983	
Ellipsoid: GRS 1980	
Location: Zone 13N (108 W to 102 W)	
System Datum: Mean Sea Level	



<b>Company:</b>	US ROCKIES WATTENBERG PLANNING	<b>Local Co-ordinate Reference:</b>	Well FEHRN 37N-29HZ
<b>Project:</b>	WELD-NAD83-UTMFT13N	<b>TVD Reference:</b>	GL 4926 & KB 20 @ 4946.00usft (PRECISION 461)
<b>Site:</b>	2N-66W-32 Fehr Pad	<b>MD Reference:</b>	GL 4926 & KB 20 @ 4946.00usft (PRECISION 461)
<b>Well:</b>	FEHRN 37N-29HZ	<b>North Reference:</b>	True
<b>Wellbore:</b>	Plan A	<b>Survey Calculation Method:</b>	Minimum Curvature
<b>Design:</b>	Plan A	<b>Database:</b>	Denver Sales Office

<b>Project</b>	WELD-NAD83-UTMFT13N		
<b>Map System:</b>	Universal Transverse Mercator (US Survey Feet)	<b>System Datum:</b>	Mean Sea Level
<b>Geo Datum:</b>	North American Datum 1983		
<b>Map Zone:</b>	Zone 13N (108 W to 102 W)		

Site	2N-66W-32 Fehr Pad				
Site Position:		Northing:	14,563,589.77 usft	Latitude:	40.101032
From:	Lat/Long	Easting:	1,697,779.90 usft	Longitude:	-104.794866
Position Uncertainty:	0.00 usft	Slot Radius:	13.200 in	Grid Convergence:	0.13 °

Well	FEHRN 37N-29HZ					
Well Position	+N/-S	0.00 usft	Northing:	14,563,589.25 usft	Latitude:	40.101030
	+E/-W	0.00 usft	Easting:	1,697,869.67 usft	Longitude:	-104.794545
Position Uncertainty		2.68 usft	Wellhead Elevation:	0.00 usft	Ground Level:	4,926.00 usft

<b>Wellbore</b>	Plan A				
<b>Magnetics</b>	<b>Model Name</b>	<b>Sample Date</b>	<b>Declination (°)</b>	<b>Dip Angle (°)</b>	<b>Field Strength (nT)</b>
	IGRF2010	1/20/2015	8.37	66.68	52,591

<b>Design</b>	Plan A				
<b>Audit Notes:</b>					
<b>Version:</b>	1.0	<b>Phase:</b>	ACTUAL	<b>Tie On Depth:</b>	0.00
<b>Vertical Section:</b>	<b>Depth From (TVD) (usft)</b>	<b>+N/-S (usft)</b>	<b>+E/-W (usft)</b>	<b>Direction (°)</b>	
	0.00	0.00	0.00	0.00	

<b>Survey Program</b>	<b>Date</b>	8/3/2015			
<b>From (usft)</b>	<b>To (usft)</b>	<b>Survey (Wellbore)</b>	<b>Tool Name</b>	<b>Description</b>	
13.00	1,835.00	Survey #1 CATHEDRAL MWD SURFACE	APC_ISCWSA REV 2 MWD	Fixed:v2:standard declination	
1,961.00	12,946.00	Survey #2 SDI MWD PRODUCTION (Plan	APC_ISCWSA REV 2 MWD+	Fixed:v2:crustal field declination	

<b>Survey</b>										
<b>Measured Depth (usft)</b>	<b>Inclination (°)</b>	<b>Azimuth (°)</b>	<b>Vertical Depth (usft)</b>	<b>+N/-S (usft)</b>	<b>+E/-W (usft)</b>	<b>Vertical Section (usft)</b>	<b>Dogleg Rate (°/100usft)</b>	<b>Build Rate (°/100usft)</b>	<b>Turn Rate (°/100usft)</b>	
0.00	0.00	0.00	0.00	0.00	0.00	0.00	0.00	0.00	0.00	
13.00	0.00	0.00	13.00	0.00	0.00	0.00	0.00	0.00	0.00	
125.00	0.50	333.00	125.00	0.44	-0.22	0.44	0.45	0.45	0.00	
<b>FIRST CATHEDRAL MWD SURFACE SURVEY</b>										
187.00	0.60	330.50	187.00	0.96	-0.50	0.96	0.17	0.16	-4.03	
249.00	1.00	346.80	248.99	1.77	-0.79	1.77	0.74	0.65	26.29	
310.00	1.40	346.20	309.98	3.01	-1.09	3.01	0.66	0.66	-0.98	
373.00	1.90	293.70	372.95	4.18	-2.23	4.18	2.42	0.79	-83.33	

<b>Company:</b>	US ROCKIES WATTENBERG PLANNING	<b>Local Co-ordinate Reference:</b>	Well FEHRN 37N-29HZ
<b>Project:</b>	WELD-NAD83-UTMFT13N	<b>TVD Reference:</b>	GL 4926 & KB 20 @ 4946.00usft (PRECISION 461)
<b>Site:</b>	2N-66W-32 Fehr Pad	<b>MD Reference:</b>	GL 4926 & KB 20 @ 4946.00usft (PRECISION 461)
<b>Well:</b>	FEHRN 37N-29HZ	<b>North Reference:</b>	True
<b>Wellbore:</b>	Plan A	<b>Survey Calculation Method:</b>	Minimum Curvature
<b>Design:</b>	Plan A	<b>Database:</b>	Denver Sales Office

Survey									
Measured Depth (usft)	Inclination (°)	Azimuth (°)	Vertical Depth (usft)	+N/-S (usft)	+E/-W (usft)	Vertical Section (usft)	Dogleg Rate (°/100usft)	Build Rate (°/100usft)	Turn Rate (°/100usft)
458.00	3.50	260.00	457.86	4.29	-6.07	4.29	2.58	1.88	-39.65
543.00	4.70	245.40	542.64	2.39	-11.79	2.39	1.86	1.41	-17.18
628.00	5.00	234.70	627.34	-1.20	-17.98	-1.20	1.12	0.35	-12.59
713.00	5.10	227.10	712.01	-5.91	-23.78	-5.91	0.80	0.12	-8.94
797.00	5.30	214.70	795.67	-11.64	-28.72	-11.64	1.36	0.24	-14.76
881.00	6.10	210.00	879.25	-18.70	-33.16	-18.70	1.10	0.95	-5.60
966.00	6.60	211.30	963.73	-26.78	-37.95	-26.78	0.61	0.59	1.53
1,051.00	6.90	213.50	1,048.14	-35.21	-43.31	-35.21	0.47	0.35	2.59
1,135.00	8.90	217.50	1,131.34	-44.58	-50.05	-44.58	2.47	2.38	4.76
1,219.00	10.20	219.50	1,214.18	-55.47	-58.74	-55.47	1.60	1.55	2.38
1,304.00	11.20	219.80	1,297.70	-67.62	-68.81	-67.62	1.18	1.18	0.35
1,387.00	10.80	215.10	1,379.17	-80.18	-78.44	-80.18	1.18	-0.48	-5.66
1,471.00	11.00	209.50	1,461.66	-93.59	-86.91	-93.59	1.28	0.24	-6.67
1,555.00	11.60	205.30	1,544.03	-108.20	-94.47	-108.20	1.21	0.71	-5.00
1,639.00	11.70	203.10	1,626.30	-123.67	-101.42	-123.67	0.54	0.12	-2.62
1,724.00	11.20	202.50	1,709.61	-139.22	-107.96	-139.22	0.60	-0.59	-0.71
1,809.00	10.80	205.50	1,793.05	-154.04	-114.55	-154.04	0.82	-0.47	3.53
1,816.07	10.72	205.63	1,800.00	-155.23	-115.12	-155.23	1.21	-1.15	1.88
9 5/8"									
1,835.00	10.50	206.00	1,818.60	-158.37	-116.64	-158.37	1.21	-1.15	1.94
LAST CATHEDRAL MWD SURFACE SURVEY									
1,961.00	9.75	217.00	1,942.65	-177.21	-128.09	-177.21	1.64	-0.60	8.73
FIRST SDI MWD PRODUCTION SURVEY									
2,056.00	11.68	225.81	2,036.00	-190.34	-139.83	-190.34	2.66	2.03	9.27
2,152.00	11.54	224.95	2,130.03	-203.91	-153.58	-203.91	0.23	-0.15	-0.90
2,247.00	11.41	228.21	2,223.13	-216.89	-167.30	-216.89	0.70	-0.14	3.43
2,343.00	10.89	227.21	2,317.32	-229.38	-181.03	-229.38	0.58	-0.54	-1.04
2,438.00	10.95	226.77	2,410.60	-241.66	-194.19	-241.66	0.11	0.06	-0.46
2,533.00	10.74	226.12	2,503.91	-253.97	-207.15	-253.97	0.26	-0.22	-0.68
2,628.00	10.44	224.94	2,597.29	-266.20	-219.61	-266.20	0.39	-0.32	-1.24
2,723.00	9.58	227.08	2,690.84	-277.68	-231.48	-277.68	0.99	-0.91	2.25
2,818.00	9.38	223.31	2,784.54	-288.70	-242.58	-288.70	0.69	-0.21	-3.97
2,913.00	8.70	223.36	2,878.36	-299.55	-252.82	-299.55	0.72	-0.72	0.05
3,008.00	7.87	222.42	2,972.37	-309.58	-262.14	-309.58	0.89	-0.87	-0.99
3,103.00	7.38	227.79	3,066.53	-318.48	-271.05	-318.48	0.91	-0.52	5.65
3,199.00	6.50	226.27	3,161.83	-326.38	-279.54	-326.38	0.94	-0.92	-1.58
3,294.00	5.62	218.38	3,256.30	-333.74	-286.32	-333.74	1.27	-0.93	-8.31
3,389.00	4.90	214.78	3,350.90	-340.72	-291.52	-340.72	0.83	-0.76	-3.79
3,484.00	3.71	236.35	3,445.63	-345.76	-296.39	-345.76	2.09	-1.25	22.71
3,579.00	1.51	200.72	3,540.53	-348.63	-299.39	-348.63	2.77	-2.32	-37.51
3,675.00	0.94	207.96	3,636.51	-350.51	-300.21	-350.51	0.61	-0.59	7.54
3,770.00	1.64	136.55	3,731.49	-352.18	-299.64	-352.18	1.69	0.74	-75.17

<b>Company:</b>	US ROCKIES WATTENBERG PLANNING	<b>Local Co-ordinate Reference:</b>	Well FEHRN 37N-29HZ
<b>Project:</b>	WELD-NAD83-UTMFT13N	<b>TVD Reference:</b>	GL 4926 & KB 20 @ 4946.00usft (PRECISION 461)
<b>Site:</b>	2N-66W-32 Fehr Pad	<b>MD Reference:</b>	GL 4926 & KB 20 @ 4946.00usft (PRECISION 461)
<b>Well:</b>	FEHRN 37N-29HZ	<b>North Reference:</b>	True
<b>Wellbore:</b>	Plan A	<b>Survey Calculation Method:</b>	Minimum Curvature
<b>Design:</b>	Plan A	<b>Database:</b>	Denver Sales Office

Survey									
Measured Depth (usft)	Inclination (°)	Azimuth (°)	Vertical Depth (usft)	+N-S (usft)	+E-W (usft)	Vertical Section (usft)	Dogleg Rate (°/100usft)	Build Rate (°/100usft)	Turn Rate (°/100usft)
3,866.00	1.63	121.18	3,827.45	-353.89	-297.53	-353.89	0.46	-0.01	-16.01
3,961.00	1.16	114.31	3,922.43	-354.98	-295.50	-354.98	0.52	-0.49	-7.23
4,056.00	1.19	96.88	4,017.41	-355.50	-293.64	-355.50	0.38	0.03	-18.35
4,151.00	1.06	132.93	4,112.39	-356.21	-292.02	-356.21	0.74	-0.14	37.95
4,246.00	1.19	169.85	4,207.37	-357.78	-291.20	-357.78	0.76	0.14	38.86
4,342.00	1.47	177.09	4,303.35	-360.00	-290.96	-360.00	0.34	0.29	7.54
4,436.00	1.45	191.50	4,397.32	-362.37	-291.14	-362.37	0.39	-0.02	15.33
4,532.00	1.00	145.98	4,493.30	-364.25	-290.91	-364.25	1.08	-0.47	-47.42
4,627.00	0.78	149.20	4,588.28	-365.49	-290.12	-365.49	0.24	-0.23	3.39
4,722.00	0.93	208.17	4,683.28	-366.73	-290.15	-366.73	0.90	0.16	62.07
4,817.00	1.46	216.88	4,778.25	-368.37	-291.24	-368.37	0.59	0.56	9.17
4,912.00	0.57	155.37	4,873.24	-369.77	-291.77	-369.77	1.36	-0.94	-64.75
5,007.00	1.05	179.43	4,968.23	-371.07	-291.56	-371.07	0.61	0.51	25.33
5,103.00	1.65	165.18	5,064.20	-373.29	-291.20	-373.29	0.71	0.63	-14.84
5,198.00	1.10	168.67	5,159.18	-375.50	-290.67	-375.50	0.59	-0.58	3.67
5,293.00	1.13	171.90	5,254.16	-377.33	-290.36	-377.33	0.07	0.03	3.40
5,388.00	1.07	192.77	5,349.14	-379.12	-290.42	-379.12	0.42	-0.06	21.97
5,484.00	1.40	119.18	5,445.12	-380.56	-289.60	-380.56	1.57	0.34	-76.66
5,579.00	1.60	84.82	5,540.09	-381.01	-287.26	-381.01	0.95	0.21	-36.17
5,675.00	1.53	75.62	5,636.06	-380.57	-284.69	-380.57	0.27	-0.07	-9.58
5,770.00	1.32	92.72	5,731.03	-380.31	-282.37	-380.31	0.50	-0.22	18.00
5,865.00	0.93	81.40	5,826.01	-380.25	-280.51	-380.25	0.47	-0.41	-11.92
5,960.00	0.97	99.42	5,921.00	-380.26	-278.96	-380.26	0.32	0.04	18.97
6,055.00	0.67	76.68	6,015.99	-380.27	-277.62	-380.27	0.46	-0.32	-23.94
6,150.00	0.72	68.86	6,110.98	-379.92	-276.52	-379.92	0.11	0.05	-8.23
6,245.00	0.88	55.88	6,205.97	-379.30	-275.36	-379.30	0.25	0.17	-13.66
6,340.00	0.76	37.61	6,300.96	-378.39	-274.38	-378.39	0.30	-0.13	-19.23
6,435.00	0.50	47.30	6,395.96	-377.61	-273.69	-377.61	0.29	-0.27	10.20
6,530.00	0.51	34.02	6,490.95	-376.98	-273.15	-376.98	0.12	0.01	-13.98
6,625.00	3.23	9.89	6,585.89	-373.99	-272.45	-373.99	2.92	2.86	-25.40
6,718.00	10.94	7.08	6,678.11	-362.63	-270.91	-362.63	8.30	8.29	-3.02
6,814.00	18.08	5.26	6,770.99	-338.73	-268.42	-338.73	7.45	7.44	-1.90
6,908.00	20.84	3.55	6,859.61	-307.51	-266.04	-307.51	3.00	2.94	-1.82
7,004.00	29.95	0.19	6,946.25	-266.41	-264.90	-266.41	9.60	9.49	-3.50
7,099.00	36.33	356.35	7,025.77	-214.56	-266.62	-214.56	7.07	6.72	-4.04
7,194.00	43.73	358.46	7,098.46	-153.56	-269.30	-153.56	7.92	7.79	2.22
7,289.00	53.84	3.08	7,160.99	-82.24	-268.12	-82.24	11.25	10.64	4.86
7,302.72	54.75	2.64	7,169.00	-71.11	-267.56	-71.11	7.15	6.67	-3.17
TOP OF PRODUCTION									
7,385.00	60.27	0.22	7,213.18	-1.76	-265.87	-1.76	7.15	6.70	-2.95
7,480.00	64.20	359.01	7,257.43	82.28	-266.45	82.28	4.29	4.14	-1.27
7,575.00	73.06	358.79	7,292.01	170.64	-268.15	170.64	9.33	9.33	-0.23

<b>Company:</b>	US ROCKIES WATTENBERG PLANNING	<b>Local Co-ordinate Reference:</b>	Well FEHRN 37N-29HZ
<b>Project:</b>	WELD-NAD83-UTMFT13N	<b>TVD Reference:</b>	GL 4926 & KB 20 @ 4946.00usft (PRECISION 461)
<b>Site:</b>	2N-66W-32 Fehr Pad	<b>MD Reference:</b>	GL 4926 & KB 20 @ 4946.00usft (PRECISION 461)
<b>Well:</b>	FEHRN 37N-29HZ	<b>North Reference:</b>	True
<b>Wellbore:</b>	Plan A	<b>Survey Calculation Method:</b>	Minimum Curvature
<b>Design:</b>	Plan A	<b>Database:</b>	Denver Sales Office

Survey									
Measured Depth (usft)	Inclination (°)	Azimuth (°)	Vertical Depth (usft)	+N-S (usft)	+E-W (usft)	Vertical Section (usft)	Dogleg Rate (°/100usft)	Build Rate (°/100usft)	Turn Rate (°/100usft)
7,670.00	79.97	359.07	7,314.15	262.95	-269.87	262.95	7.28	7.27	0.29
7,765.00	87.11	358.31	7,324.83	357.26	-272.04	357.26	7.56	7.52	-0.80
7,771.00	87.30	358.31	7,325.13	363.25	-272.21	363.25	3.22	3.22	-0.01
LANDING POINT									
7,860.00	90.17	358.30	7,327.09	452.18	-274.84	452.18	3.22	3.22	-0.01
7,955.00	87.85	358.51	7,328.73	547.13	-277.49	547.13	2.45	-2.44	0.22
8,051.00	89.06	358.53	7,331.32	643.06	-279.97	643.06	1.26	1.26	0.02
8,145.00	90.67	359.37	7,331.54	737.04	-281.69	737.04	1.93	1.71	0.89
8,239.00	92.25	359.51	7,329.14	831.00	-282.61	831.00	1.69	1.68	0.15
8,335.00	91.34	358.75	7,326.14	926.94	-284.06	926.94	1.23	-0.95	-0.79
8,430.00	89.90	357.81	7,325.11	1,021.89	-286.92	1,021.89	1.81	-1.52	-0.99
8,525.00	89.63	358.53	7,325.50	1,116.84	-289.95	1,116.84	0.81	-0.28	0.76
8,620.00	91.08	359.67	7,324.91	1,211.82	-291.44	1,211.82	1.94	1.53	1.20
8,715.00	90.84	0.91	7,323.32	1,306.80	-290.96	1,306.80	1.33	-0.25	1.31
8,809.00	90.20	1.71	7,322.47	1,400.77	-288.81	1,400.77	1.09	-0.68	0.85
8,905.00	91.88	1.94	7,320.72	1,496.71	-285.76	1,496.71	1.77	1.75	0.24
9,000.00	91.65	1.11	7,317.80	1,591.63	-283.23	1,591.63	0.91	-0.24	-0.87
9,094.00	92.18	0.97	7,314.66	1,685.56	-281.52	1,685.56	0.58	0.56	-0.15
9,186.00	91.07	359.14	7,312.05	1,777.51	-281.44	1,777.51	2.33	-1.21	-1.99
9,377.00	89.43	356.51	7,311.21	1,968.35	-288.68	1,968.35	1.62	-0.86	-1.38
9,470.00	88.22	358.31	7,313.12	2,061.23	-292.89	2,061.23	2.33	-1.30	1.94
9,565.00	89.19	359.16	7,315.27	2,156.18	-294.98	2,156.18	1.36	1.02	0.89
9,660.00	90.40	359.32	7,315.61	2,251.17	-296.24	2,251.17	1.28	1.27	0.17
9,756.00	91.61	359.28	7,313.92	2,347.15	-297.41	2,347.15	1.26	1.26	-0.04
9,851.00	91.55	359.30	7,311.30	2,442.10	-298.59	2,442.10	0.07	-0.06	0.02
9,946.00	90.20	358.08	7,309.85	2,537.06	-300.76	2,537.06	1.92	-1.42	-1.28
10,041.00	89.90	358.90	7,309.77	2,632.03	-303.27	2,632.03	0.92	-0.32	0.86
10,137.00	91.61	359.05	7,308.51	2,728.00	-304.98	2,728.00	1.79	1.78	0.16
10,232.00	90.77	0.54	7,306.53	2,822.98	-305.32	2,822.98	1.80	-0.88	1.57
10,420.00	89.36	0.16	7,306.32	3,010.97	-304.17	3,010.97	0.78	-0.75	-0.20
10,516.00	88.89	0.26	7,307.79	3,106.96	-303.82	3,106.96	0.50	-0.49	0.10
10,609.00	88.69	2.11	7,309.75	3,199.91	-301.90	3,199.91	2.00	-0.22	1.99
10,704.00	89.23	2.29	7,311.47	3,294.83	-298.25	3,294.83	0.60	0.57	0.19
10,799.00	91.44	2.30	7,310.92	3,389.74	-294.45	3,389.74	2.33	2.33	0.01
10,987.00	90.57	3.00	7,307.62	3,577.51	-285.76	3,577.51	0.59	-0.46	0.37
11,082.00	90.27	2.09	7,306.92	3,672.41	-281.54	3,672.41	1.01	-0.32	-0.96
11,177.00	89.43	2.83	7,307.17	3,767.32	-277.46	3,767.32	1.18	-0.88	0.78
11,272.00	89.19	1.70	7,308.32	3,862.24	-273.71	3,862.24	1.22	-0.25	-1.19
11,366.00	89.26	0.80	7,309.59	3,956.21	-271.66	3,956.21	0.96	0.07	-0.96
11,461.00	91.08	0.05	7,309.31	4,051.20	-270.95	4,051.20	2.07	1.92	-0.79
11,555.00	91.88	0.66	7,306.88	4,145.17	-270.37	4,145.17	1.07	0.85	0.65
11,650.00	90.10	0.22	7,305.24	4,240.15	-269.64	4,240.15	1.93	-1.87	-0.46

<b>Company:</b>	US ROCKIES WATTENBERG PLANNING	<b>Local Co-ordinate Reference:</b>	Well FEHRN 37N-29HZ
<b>Project:</b>	WELD-NAD83-UTMFT13N	<b>TVD Reference:</b>	GL 4926 & KB 20 @ 4946.00usft (PRECISION 461)
<b>Site:</b>	2N-66W-32 Fehr Pad	<b>MD Reference:</b>	GL 4926 & KB 20 @ 4946.00usft (PRECISION 461)
<b>Well:</b>	FEHRN 37N-29HZ	<b>North Reference:</b>	True
<b>Wellbore:</b>	Plan A	<b>Survey Calculation Method:</b>	Minimum Curvature
<b>Design:</b>	Plan A	<b>Database:</b>	Denver Sales Office

Survey										
Measured Depth (usft)	Inclination (°)	Azimuth (°)	Vertical Depth (usft)	+N/-S (usft)	+E/-W (usft)	Vertical Section (usft)	Dogleg Rate (°/100usft)	Build Rate (°/100usft)	Turn Rate (°/100usft)	
11,744.00	89.90	0.29	7,305.24	4,334.15	-269.22	4,334.15	0.23	-0.21	0.07	
11,933.00	88.79	358.67	7,307.40	4,523.12	-270.94	4,523.12	1.04	-0.59	-0.86	
12,027.00	90.50	358.22	7,307.98	4,617.08	-273.49	4,617.08	1.88	1.82	-0.48	
12,122.00	90.34	357.85	7,307.28	4,712.02	-276.75	4,712.02	0.42	-0.17	-0.39	
12,217.00	89.39	357.23	7,307.51	4,806.93	-280.82	4,806.93	1.19	-1.00	-0.65	
12,312.00	89.93	357.24	7,308.07	4,901.82	-285.41	4,901.82	0.57	0.57	0.01	
12,501.00	89.33	357.40	7,309.29	5,090.60	-294.24	5,090.60	0.33	-0.32	0.08	
12,597.00	91.31	356.33	7,308.76	5,186.45	-299.49	5,186.45	2.34	2.06	-1.11	
12,692.00	90.03	356.91	7,307.65	5,281.28	-305.09	5,281.28	1.48	-1.35	0.61	
12,787.00	90.00	358.11	7,307.62	5,376.19	-309.22	5,376.19	1.26	-0.03	1.26	
12,882.00	91.68	358.04	7,306.23	5,471.12	-312.41	5,471.12	1.77	1.77	-0.07	
LAST SDI MWD PRODUCTION SURVEY										
12,946.00	91.68	358.04	7,304.35	5,535.05	-314.60	5,535.05	0.00	0.00	0.00	
SDI PROJECTION TO TD										

Casing Points					
Measured Depth (usft)	Vertical Depth (usft)	Name	Casing Diameter (in)	Hole Diameter (in)	
1,816.07	1,800.00	9 5/8"	9.625	13.500	

Formations						
Measured Depth (usft)	Vertical Depth (usft)	Name	Lithology	Dip (°)	Dip Direction (°)	
7,220.27	7,117.00	SSPG		0.00		
7,302.72	7,169.00	NBRR		0.00		
7,465.39	7,251.00	N470_B_CK		0.00		
7,717.83	7,321.00	N700_C_CK		0.00		

Design Annotations					
Measured Depth (usft)	Vertical Depth (usft)	Local Coordinates			
		+N/-S (usft)	+E/-W (usft)	Comment	
125.00	125.00	0.44	-0.22	FIRST CATHEDRAL MWD SURFACE SURVEY	
1,835.00	1,818.60	-158.37	-116.64	LAST CATHEDRAL MWD SURFACE SURVEY	
1,961.00	1,942.65	-177.21	-128.09	FIRST SDI MWD PRODUCTION SURVEY	
7,302.72	7,169.00	-71.11	-267.56	TOP OF PRODUCTION	
7,771.00	7,325.13	363.25	-272.21	LANDING POINT	
12,882.00	7,306.23	5,471.12	-312.41	LAST SDI MWD PRODUCTION SURVEY	
12,946.00	7,304.35	5,535.05	-314.60	SDI PROJECTION TO TD	

<b>Company:</b>	US ROCKIES WATTENBERG PLANNING	<b>Local Co-ordinate Reference:</b>	Well FEHRN 37N-29HZ
<b>Project:</b>	WELD-NAD83-UTMFT13N	<b>TVD Reference:</b>	GL 4926 & KB 20 @ 4946.00usft (PRECISION 461)
<b>Site:</b>	2N-66W-32 Fehr Pad	<b>MD Reference:</b>	GL 4926 & KB 20 @ 4946.00usft (PRECISION 461)
<b>Well:</b>	FEHRN 37N-29HZ	<b>North Reference:</b>	True
<b>Wellbore:</b>	Plan A	<b>Survey Calculation Method:</b>	Minimum Curvature
<b>Design:</b>	Plan A	<b>Database:</b>	Denver Sales Office

Checked By:	_____	Approved By:	_____	Date:	_____
-------------	-------	--------------	-------	-------	-------