

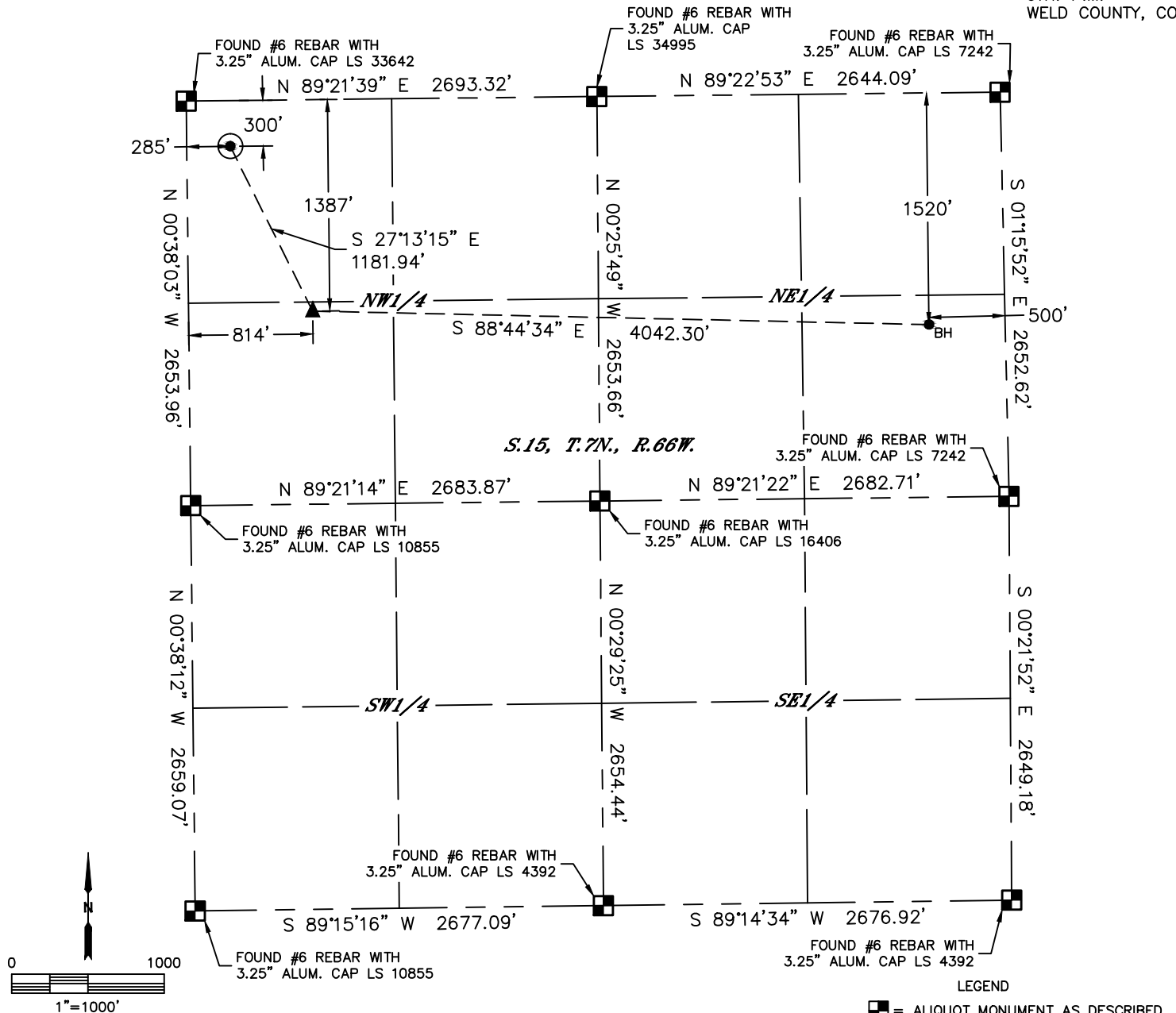


Lat40°, Inc. 6250 W. 10th Street, Unit 2, Greeley, CO 970-515-5294

# WELL LOCATION CERTIFICATE

THORNTON 15F-432

SECTION: 15  
TOWNSHIP: 7N  
RANGE: 66W  
6TH. P.M.  
WELD COUNTY, CO



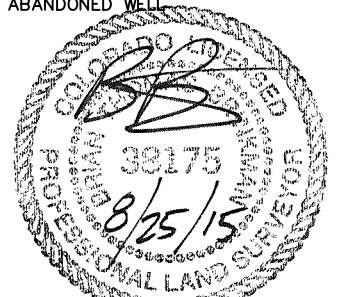
CLIENT: PDC ENERGY				LANDMAN: STEVE TRACY		
INSTRUMENT OPERATOR: BRIAN ROTTINGHAUS				SURVEY DATE: 7/21/2015	SURFACE USE: CROP LAND	
SHL FOOTAGE	SHL LAT°	SHL LONG°	SHL PDOP	SHL ELEV	SHL 1/4/1/4	SHL S-T-R
300 FNL 285 FWL	40.58166	-104.77250	2.1	4966	NWNW	15-7-66

BHL FOOTAGE	BHL LAT°	BHL LONG°	BHL S-T-R	EP FOOTAGE	EP LAT°	EP LONG°	EP S-T-R
1520 FNL 500 FEL	40.57835	-104.75604	15-7-66	1378 FNL 814 FWL	40.57869	-104.77059	15-7-66

NEAREST CULTURAL ITEMS	
BUILDING	±620' NW
BUILDING UNIT	±620' NW
HIGH OCCUPANCY BUILDING UNIT	5280'+
DESIGNATED OUTSIDE ACTIVITY AREA	5280'+
PUBLIC ROAD (COUNTY ROAD 31)	±270' W
ABOVE GROUND UTILITY	±343' N
RAILROAD	5280'+
PROPERTY LINE	±285' W

NOTE:  
1) Bearings shown are Grid Bearings of the Colorado State Plane Coordinate System, North Zone, North American Datum 1983. The lineal dimensions as contained herein are based upon the "U.S. Survey Foot."  
2) Distances to section lines measured at 90 degrees from said section lines.  
3) Ground elevations are based on an observed GPS elevation (NAVD 1988 DATUM).  
4) Latitude and Longitude shown are (NAD 83 DATUM).  
5) IMPROVEMENTS: See LOCATION DRAWING for all visible improvements within 500' of Oil and Gas Location.  
6) This map does not represent a boundary survey.

- LEGEND
- = ALIQUOT MONUMENT AS DESCRIBED
  - = CALCULATED POSITION
  - = SURFACE HOLE LOCATION (SHL)
  - ▲ = ENTRY POINT LOCATION (EP)
  - BH = BOTTOM HOLE LOCATION (BHL)
  - ⊙ = EXISTING WELL
  - ⊙ = ABANDONED WELL



Brian T. Brinkman—On behalf of Lat40°, Inc.  
Colorado Licensed Professional Land Surveyor No. 38175  
DATE: 08/25/2015  
PROJECT#: 2015102

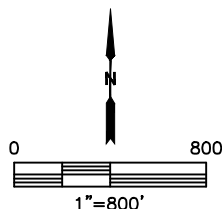
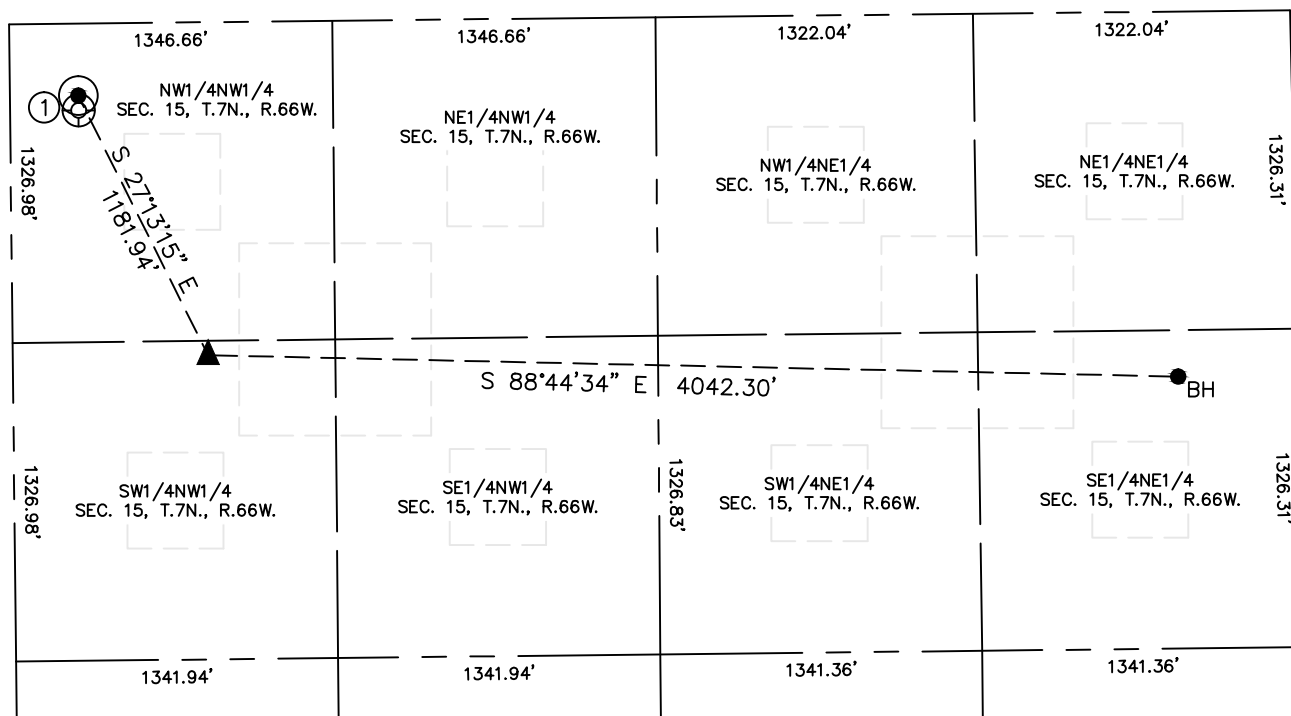


Lat40°, Inc. 6250 W. 10th Street, Unit 2, Greeley, CO 970-515-5294

# SITE SKETCH

THORNTON 15F-432

SECTION: 15  
TOWNSHIP: 7N  
RANGE: 66W  
6TH. P.M.  
WELD COUNTY, CO



WELL NO.	WELL NAME	SHL FOOTAGE				SHL LAT°	SHL LONG°	PDOP	ELEV (FT.)	1/4/1/4
1	THORNTON 15E-432	361	FNL	286	FWL	40.58150	-104.7725	1.6	4966	NWNW

DATE: 08/25/2015  
PROJECT#: 2015102