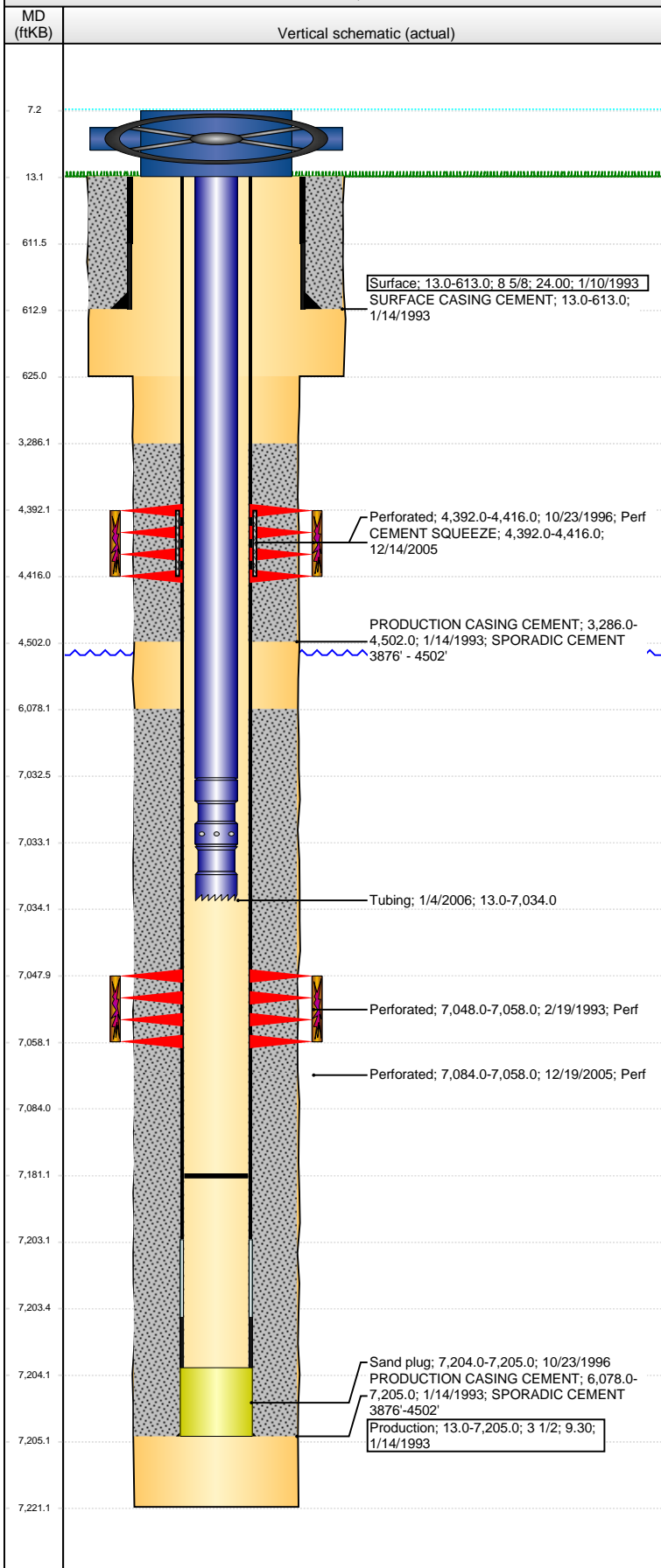


**Well Name: RIVA RED D31- 3**

VERTICAL - ORIGINAL HOLE, 10/5/2015 12:59:26 PM



## Well Header

API 05-123-16670	Business Unit DJ BASIN	District 15	Well Config VERTICAL
Original KB Elevation (ft) 4,816.00	KB - GL / MSL (ftKB) 13.00	Spud Date 1/8/1993	P & A Date
Comment			
Directions To Well			

## Congressional Location

Quarter 1	Quarter 2	Quarter 3 NE	Quarter 4 NW	Section 31	Township 3 N	Twnshp N...	Range 64	Rng E/W Dir W
-----------	-----------	-----------------	-----------------	---------------	-----------------	-------------	-------------	------------------

## Bottom Hole Location

North-South Distance (ft)	From N or S Line	East-West Distance (ft)	From E or W Line
---------------------------	------------------	-------------------------	------------------

## Plug Back Total Depths

Date	Depth (ftKB)	Method	Com
1/14/1993	7,161.0	CASED HOLE LOG	DEPTH LOGGER ON CBL
12/16/2005	7,204.0	TAG	CLEANOUT SAND
1/4/2006	7,181.0	TAG	TAG TO LAND TUBING

## Wellbore Sections

Section Des	Size (in)	Act Top, MD (ftKB)	Act Btm, MD (ftKB)
SURFACE	12 1/4	13.0	625.0
PRODUCTION	7 7/8	625.0	7,221.0

## Zone Statuses

Zone Name	Status Date	Status	Fluid Type	Job	Prod Method
SUSSEX	11/8/1996	PR		RECOMPLETI...	
SUSSEX	12/14/2005	AB		RE-FRAC, 11/1...	
CODELL	3/30/1993	PR		DRILLING/CO...	
CODELL	10/22/1996	SI		RECOMPLETI...	
CODELL	2/21/2006	PR		RE-FRAC, 11/1...	

## Casing Strings

### Surface, 613.0ftKB

Casing Description	Run Date	OD (in)	Wt/Len (l...)	Grade	Top, MD (ft...)	MD (ftKB)
Surface	1/10/1993	8 5/8	24.00		13.0	613.0

### Production, 7,205.0ftKB

Casing Description	Run Date	OD (in)	Wt/Len (l...)	Grade	Top, MD (ft...)	MD (ftKB)
Production	1/14/1993	3 1/2	9.30		13.0	7,205.0

## Cement

Description	Top Depth (ftKB)	Bottom Depth (ftKB)
PRODUCTION CASING CEMENT	3,286.0	4,502.0
Description	Top Depth (ftKB)	Bottom Depth (ftKB)
PRODUCTION CASING CEMENT	6,078.0	7,205.0
Description	Top Depth (ftKB)	Bottom Depth (ftKB)
SURFACE CASING CEMENT	13.0	613.0
Description	Top Depth (ftKB)	Bottom Depth (ftKB)
CEMENT SQUEEZE	4,392.0	4,416.0

## Tubing Strings

Tubing Description	Run Date	String...	ID (in)	Wt (lb/ft)	Grade	Len (ft)	Set De...
Tubing	1/4/2006	2 1/16	1.751	3.25	J-55	7,021.00	

## Tubing Components

Item Des	OD (in)	Wt (lb/ft)	Grade	Jts	Len (ft)	Btm (ftKB)	Btm (TVD) (ftKB)
Tubing	2 1/16	3.25	J-55	222	7,019.50	7,032.5	
Seal Nipple	2 1/16				0.70	7,033.2	
Notched collar	2 1/16				0.80	7,034.0	

## Perforation Data

Zone	Bnch/St g	Entered Shot Total	Top (ftKB)	Btm (ftKB)	Date
CODELL, ORIGINAL HOLE		25	4,392.00	4,416.00	10/23/1996
SUSSEX, ORIGINAL HOLE		40	7,048.00	7,058.00	2/19/1993
CODELL, ORIGINAL HOLE		40	7,084.00	7,058.00	12/19/2005

**Well Name: RIVA RED D31- 3**

VERTICAL - ORIGINAL HOLE, 10/5/2015 12:59:28 PM

## Stimulations & Treatments

Date 2/22/1993	Zone CODELL, ORIGINAL HOLE	Primary Job Type DRILLING/COMPLETION - ORIGINAL
Technical Result	Tech Result Details	Tech Result Note

Comment

Date 10/23/1996	Zone SUSSEX, ORIGINAL HOLE	Primary Job Type RECOMPLETION
Technical Result	Tech Result Details	Tech Result Note

Comment

Date 12/29/2005	Zone CODELL, ORIGINAL HOLE	Primary Job Type RE-FRAC
Technical Result	Tech Result Details	Tech Result Note

Comment

## Other In Hole

Run Date	Des	OD (in)	Top (ftKB)	Btm (ftKB)
10/23/1996	Sand plug	3 1/2	7,204.0	7,205.0

## Logs

Date	Type	Top, MD (ftKB)	Btm, MD (ftKB)
1/14/1993	COMPENSATED DENSITY	3,900.0	7,230.0
1/14/1993	INDUCTION	3,900.0	7,230.0
1/18/1993	CEMENT BOND	3,190.0	7,154.0
2/23/2011	GYRO	0.0	7,000.0

