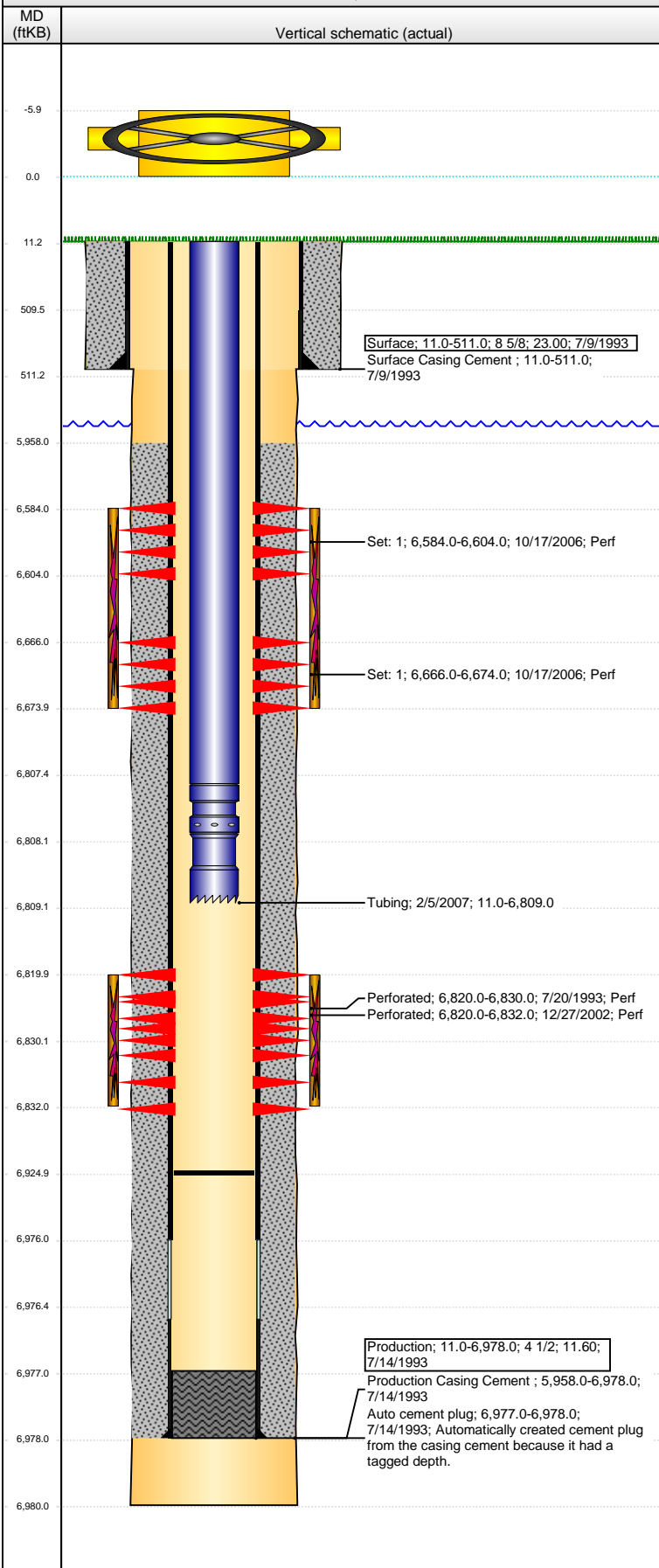


**Well Name: ATKINSON-GALE 03-13**

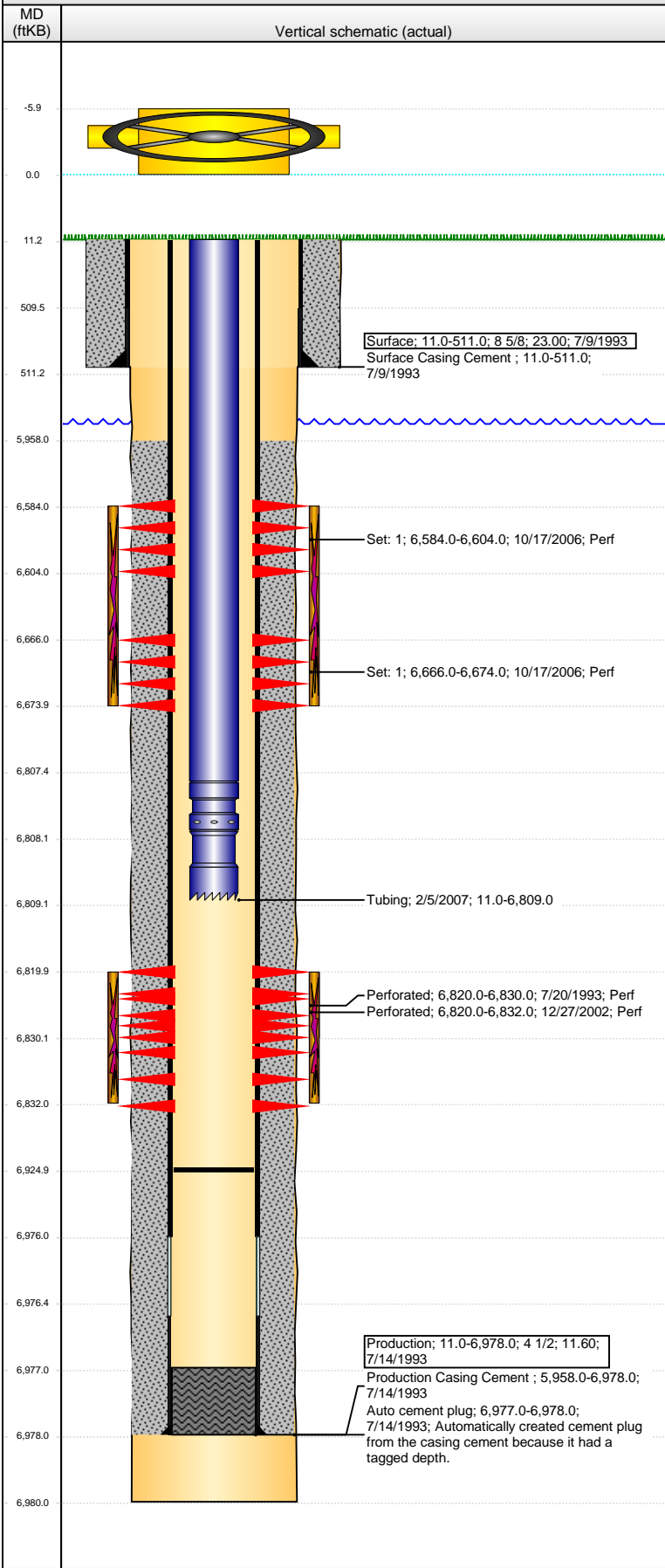
VERTICAL - ORIGINAL HOLE, 10/5/2015 10:46:26 AM



Well Header			
API	Business Unit	District	Well Config
05-123-17160	DJ BASIN	15	VERTICAL
Original KB Elevation (ft)	KB - GL / MSL (ftKB)	Spud Date	P & A Date
4,686.00	11.00	7/9/1993	
Comment			
FP PUSH TO 6925. NO ORIGINAL DRILL INFO IN WELLFILE, USED STATE REPORTS			
Directions To Well			
Congressional Location			
Quarter 1	Quarter 2	Quarter 3	Quarter 4
		SW	SW
Section	Township	Twonshp N...	Range
3	4 N		64 W
Bottom Hole Location			
North-South Distance (ft)	From N or S Line	East-West Distance (ft)	From E or W Line
Plug Back Total Depths			
Date	Depth (ftKB)	Method	Com
7/19/1993	6,977.0	CASED HOLE LOG	DEPTH LOGGER FROM CBL
10/16/2006	6,923.0	TAG	CLEAN OUT
2/1/2007	6,925.0	TAG	CLEAN OUT & LAND TBG
Wellbore Sections			
Section Des	Size (in)	Act Top, MD (ftKB)	Act Btm, MD (ftKB)
SURFACE	12 1/4	11.0	511.0
PRODUCTION	7 7/8	511.0	6,980.0
Zone Statuses			
Zone Name	Status Date	Status	Fluid Type
NIOBRARA	11/15/2006	PR	
CODELL	9/8/1993	PR	
CODELL	1/7/2003	PR	
Casing Strings			
Surface, 511.0ftKB			
Casing Description	Run Date	OD (in)	Wt/Len (l...)
Surface	7/9/1993	8 5/8	23.00
Production, 6,978.0ftKB			
Casing Description	Run Date	OD (in)	Wt/Len (l...)
Production	7/14/1993	4 1/2	11.60
Cement			
Description	Top Depth (ftKB)	Bottom Depth (ftKB)	
Surface Casing Cement	11.0	511.0	
Description	Top Depth (ftKB)	Bottom Depth (ftKB)	
Production Casing Cement	5,958.0	6,978.0	
Tubing Strings			
Tubing Description	Run Date	String...	ID (in)
Tubing	2/5/2007	2 3/8	1.995
Tubing Components			
Item Des	OD (in)	Wt (lb/ft)	Grade
Tubing	2 3/8	4.70	J-55
Seating Nipple	2 3/8	1.10	
Notched collar	2 3/8		
Perforation Data			
Zone	Bnch/St g	Entered Shot Total	Top (ftKB)
NIOBRARA, ORIGINAL HOLE		120	6,584.00
NIOBRARA, ORIGINAL HOLE		48	6,666.00
CODELL, ORIGINAL HOLE		20	6,820.00
CODELL, ORIGINAL HOLE		48	6,820.00
Stimulations & Treatments			
Date	Zone	Primary Job Type	
8/2/1993	CODELL, ORIGINAL HOLE	DRILLING/COMPLETION - ORIGINAL	
Technical Result	Tech Result Details		Tech Result Note
Failure	Screen-out		
Comment			
DATE IS ESTIMATED			

**Well Name: ATKINSON-GALE 03-13**

VERTICAL - ORIGINAL HOLE, 10/5/2015 10:46:28 AM



**Stimulations & Treatments**

Date	Zone	Primary Job Type
1/2/2003	CODELL, ORIGINAL HOLE	RE-FRAC
Technical Result		
Tech Result Details		
Tech Result Note		
Comment		
Date	Zone	Primary Job Type
11/14/2006	NIOBRARA, ORIGINAL HOLE	RECOMPLETION
Technical Result		
Tech Result Details		
Tech Result Note		
Comment		

**Other In Hole**

Run Date	Des	OD (in)	Top (ftKB)	Btm (ftKB)

**Logs**

Date	Type	Top, MD (ftKB)	Btm, MD (ftKB)
7/13/1993	DENSILOG	4,170.0	6,973.0
7/13/1993	INDUCTION	510.0	6,975.0
7/19/1993	CBL/CCL/GR	5,700.0	6,918.0
3/23/2011	GYRO	10.0	6,850.0