

**LEGEND:**

└─ = 90° SYMBOL

● = PROPOSED WELLHEAD.

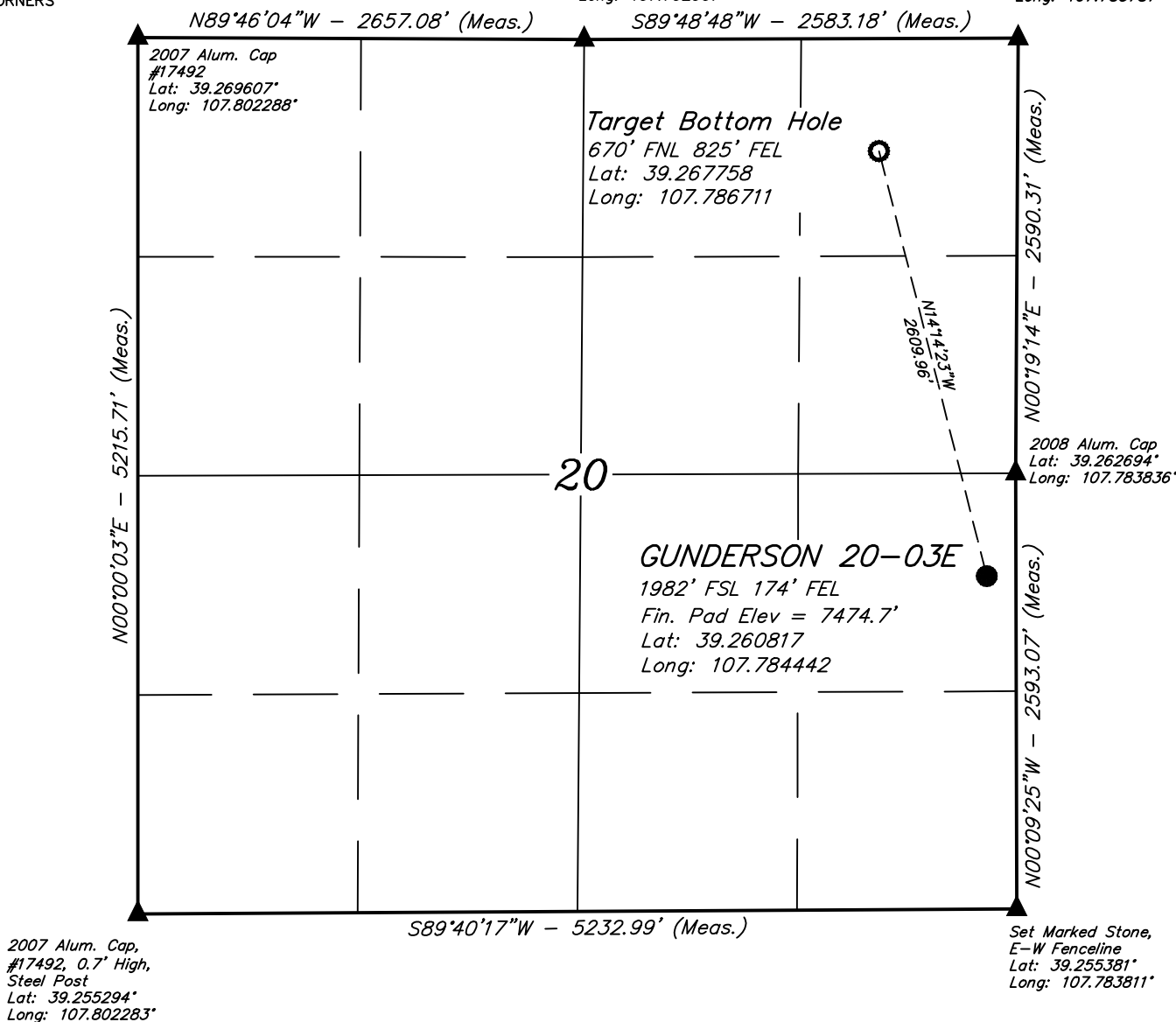
○ = TARGET BOTTOM HOLE.

▲ = SECTION CORNERS LOCATED.

**T9S, R93W, 6th P.M.**

1997 Alum. Cap  
#12093, 0.4' High  
Lat: 39.269580°  
Long: 107.792907°

Set Marked Stone,  
Steel Post  
Lat: 39.269605°  
Long: 107.783787°

**NOTE DISTANCE TO NEAREST:**

BUILDING: S17°W 3311'

BUILDING UNIT: N42°E 3855'

HOBUS: OVER A MILE

DOAA: OVER A MILE

PUBLIC ROAD: N07°W 2865'

ABOVE GROUND UTILITY: S60°W 1442'

RAILROAD: OVER A MILE

PROPERTY LINE: EAST 174'

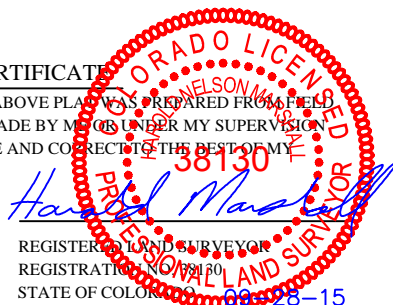
PDOP = 1.5

**NOTE:**

- 1.) All latitudes and longitudes are given in NAD 83 coordinates.
- 2.) Distances to nearest section lines are measured perpendicularly.

**CERTIFICATION**

THIS IS TO CERTIFY THAT THE ABOVE PLAT WAS PREPARED FROM FIELD NOTES OF ACTUAL SURVEYS MADE BY ME OR UNDER MY SUPERVISION AND THAT THE SAME ARE TRUE AND CORRECT TO THE BEST OF MY KNOWLEDGE AND BELIEF.



REGISTERED LAND SURVEYOR  
REGISTRATION NO. 38130  
STATE OF COLORADO 08-28-15

**BASIS OF BEARINGS**

BASIS OF BEARINGS IS A G.P.S. OBSERVATION

**BASIS OF ELEVATION**

BENCH MARK (19 RDS) LOCATED IN THE SE 1/4 OF SECTION 16, T9S, R93W, 6th P.M., TAKEN FROM THE SOUTH MAMM PEAK, QUADRANGLE, COLORADO, 7.5 MINUTE QUAD. (TOPOGRAPHIC MAP) PUBLISHED BY THE UNITED STATES DEPARTMENT OF THE INTERIOR, GEOLOGICAL SURVEY. SAID ELEVATION IS MARKED AS BEING 7252 FEET.

**PICEANCE ENERGY, LLC**

**GUNDERSON 20-03E**  
**NE 1/4 SE 1/4, SECTION 20, T9S, R93W, 6th P.M.**  
**MESA COUNTY, COLORADO**

SURVEYED BY: BRADEN BOX B.B. DATE: 08-15-15

DRAWN BY: S.S. DATE DRAWN: 08-20-15

SCALE: 1" = 1000' REVISED: 09-28-15

**WELL LOCATION PLAT**



**UELS, LLC**  
Corporate Office \* 85 South 200 East  
Vernal, UT 84078 \* (435) 789-1017