

FRANE SURVEYING INC.

Physical Address: 34834 Annie Cir.
Mail to: Box 2372, Elizabeth, CO 80107
Ph. 303-243-0037
www.franesurveying.com

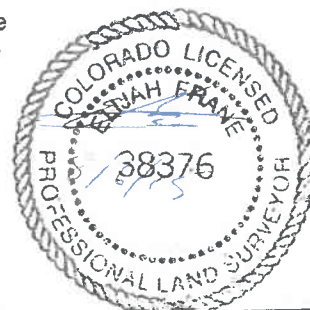
Job # 001-15 Shook 1-29 Production Facility

Frane Surveying of Elizabeth, Colorado, in accordance with a request from Grand Mesa Operating Co. has determined the location of center of the Shook 1-29 Production Facility pad to be 204 feet FNL, and 749 feet FEL, (90° off Section lines) of SECTION 29, Township 2s, Range 52w of the 6th Principal Meridian, Washington County, Colorado.

Date: Surveyed on 7/31/15 drawn on 8/03/15.

Re:
Drawn:

Staked by Elijah Frane
Drawn by Elijah Frane



Facility Exhibit

