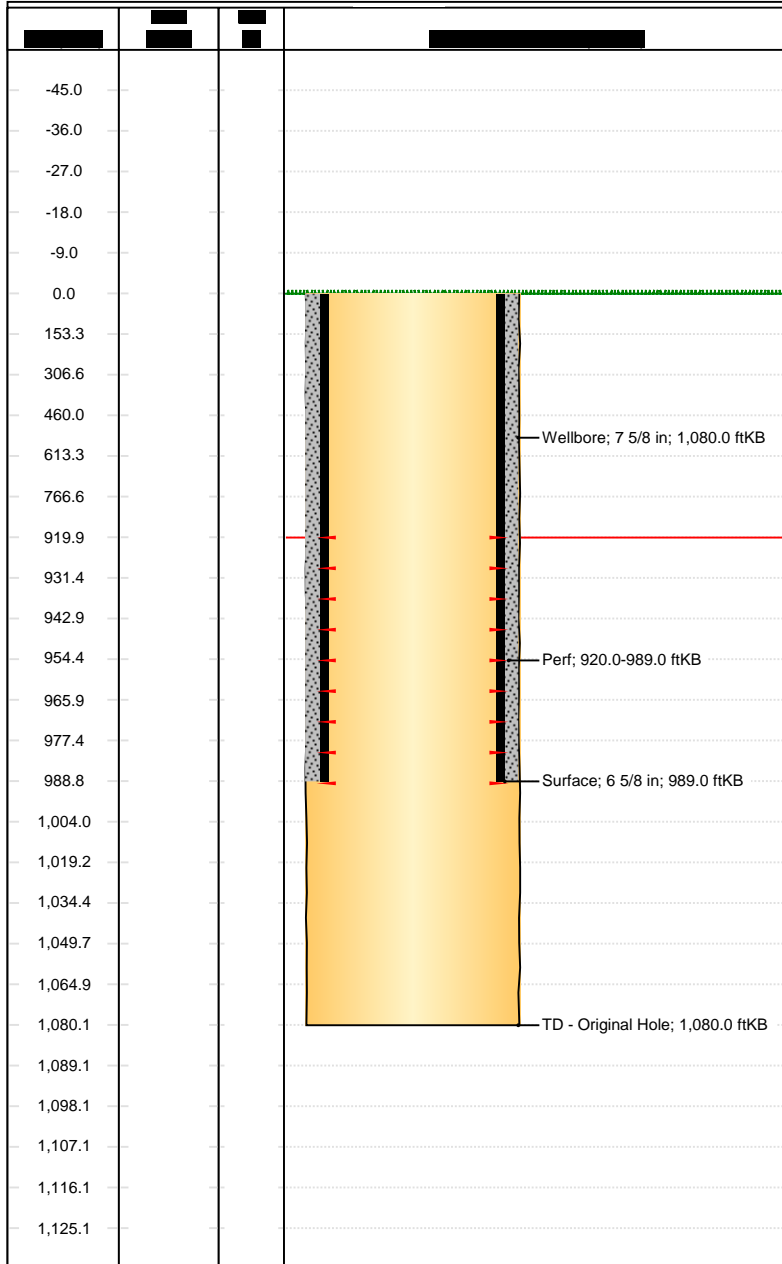




## Downhole Well Profile - with Schematic

Well Name: Golden Eagle Mine 69-93

API/UWI 05071064000000	XTO Accounting ID 94594	Permit Number 96979	State/Province Colorado	County Las Animas
Location T33S-R67W-S20	Spud Date 4/27/1993 00:00	Original KB Elevation (ft) 7,760.00	Ground/Corrected Ground Elevation (ft) 7,760.00	KB-Ground Distance (ft) 0.00



Wellbores							
Wellbore Name Original Hole			Parent Wellbore Original Hole			Wellbore API/UWI	
Start Depth (ftKB)			Profile Type			Kick Off Depth (ftKB)	
Section Des		Size (in)		Act Top (ftKB)		Act Btm (ftKB)	
		7 5/8		0.0		1,080.0	
Zones							
Zone Name		Top (ftKB)		Btm (ftKB)		Current Status	
Raton		920.0		989.0			
Casing Strings							
Csg Des		Set Depth (ftKB)		OD (in)		Wt/Len (lb/ft)	
Surface		989.0		6 5/8		20.00	
Cement							
Des		Type			String		
Surface Casing Cement		Casing			Surface, 989.0ftKB		
Tubing Strings							
Tubing Description			Run Date			Set Depth (ftKB)	
Item Des		OD (in)	Wt (lb/ft)	Grade	Jts	Len (ft)	Top (ftKB)
Rod Strings							
Rod Description			Run Date			Set Depth (ftKB)	
Item Des		OD (in)	Wt (lb/ft)	Grade	Jts	Len (ft)	Top (ftKB)
Other In Hole							
Run Date		Des		OD (in)		Top (ftKB)	
Perforations							
Date		Top (ftKB)		Btm (ftKB)		Zone	
		920.0		989.0			
Stimulations & Treatments							
Frac #		Top Perf (ftKB)		Bottom Perf (ftKB)		AIR (bbl/min)	