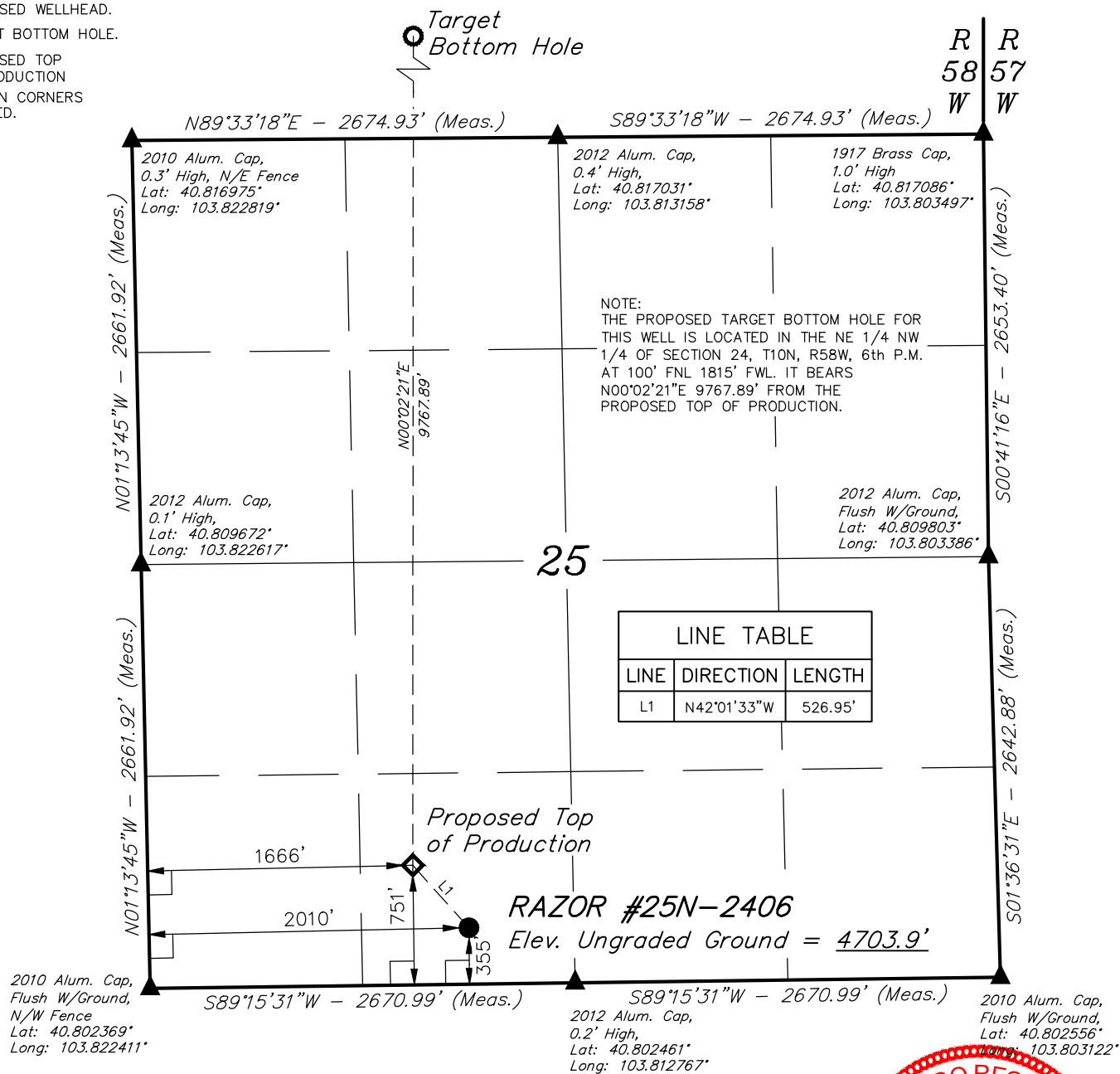


# LEGEND:

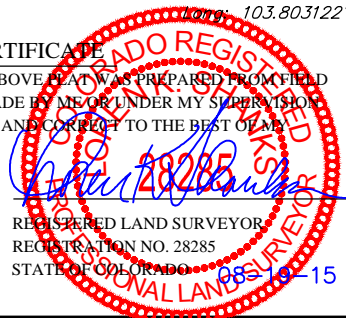
- = 90° SYMBOL
- = PROPOSED WELLHEAD.
- = TARGET BOTTOM HOLE.
- = PROPOSED TOP OF PRODUCTION
- = SECTION CORNERS LOCATED.

**T10N, R58W, 6th P.M.**



## CERTIFICATE

THIS IS TO CERTIFY THAT THE ABOVE PLAT WAS PREPARED FROM FIELD NOTES OF ACTUAL SURVEYS MADE BY ME OR UNDER MY SUPERVISION AND THAT THE SAME ARE TRUE AND CORRECT TO THE BEST OF MY KNOWLEDGE AND BELIEF.



NAD 83 (SURFACE LOCATION)	NAD 83 (PROPOSED TOP OF PRODUCTION)
LATITUDE = 40°48'12.29" (40.803414)	LATITUDE = 40°48'16.16" (40.804489)
LONGITUDE = 103°48'54.64" (103.815178)	LONGITUDE = 103°48'59.23" (103.816453)
NAD 27 (SURFACE LOCATION)	NAD 27 (PROPOSED TOP OF PRODUCTION)
LATITUDE = 40°48'12.34" (40.803428)	LATITUDE = 40°48'16.21" (40.804503)
LONGITUDE = 103°48'52.84" (103.814678)	LONGITUDE = 103°48'57.42" (103.815950)

## BASIS OF BEARINGS

BASIS OF BEARINGS IS A G.P.S. OBSERVATION

## BASIS OF ELEVATION

SPOT ELEVATION LOCATED AT THE NORTHEAST CORNER OF SECTION 15, T9N, R58W, 6th P.M. TAKEN FROM THE GATEHOOK SPRING, QUADRANGLE, COLORADO, WELD COUNTY, 7.5 MINUTE QUAD (TOPOGRAPHIC MAP) PUBLISHED BY THE UNITED STATES DEPARTMENT OF THE INTERIOR, GEOLOGICAL SURVEY. SAID ELEVATION IS MARKED AS BEING 4679 FEET.

## WHITING OIL & GAS CORP.

**RAZOR #25N-2406 (SURFACE LOCATION)**  
SE 1/4 SW 1/4, SECTION 25, T10N, R58W, 6th P.M.  
WELD COUNTY, COLORADO

SURVEYED BY: GREG WEIMER, C.J.	DATE: 03-11-15
DRAWN BY: K.B.	DATE DRAWN: 03-18-15
SCALE: 1" = 1000'	REVISED: K.A. 08-19-15

## WELL LOCATION PLAT



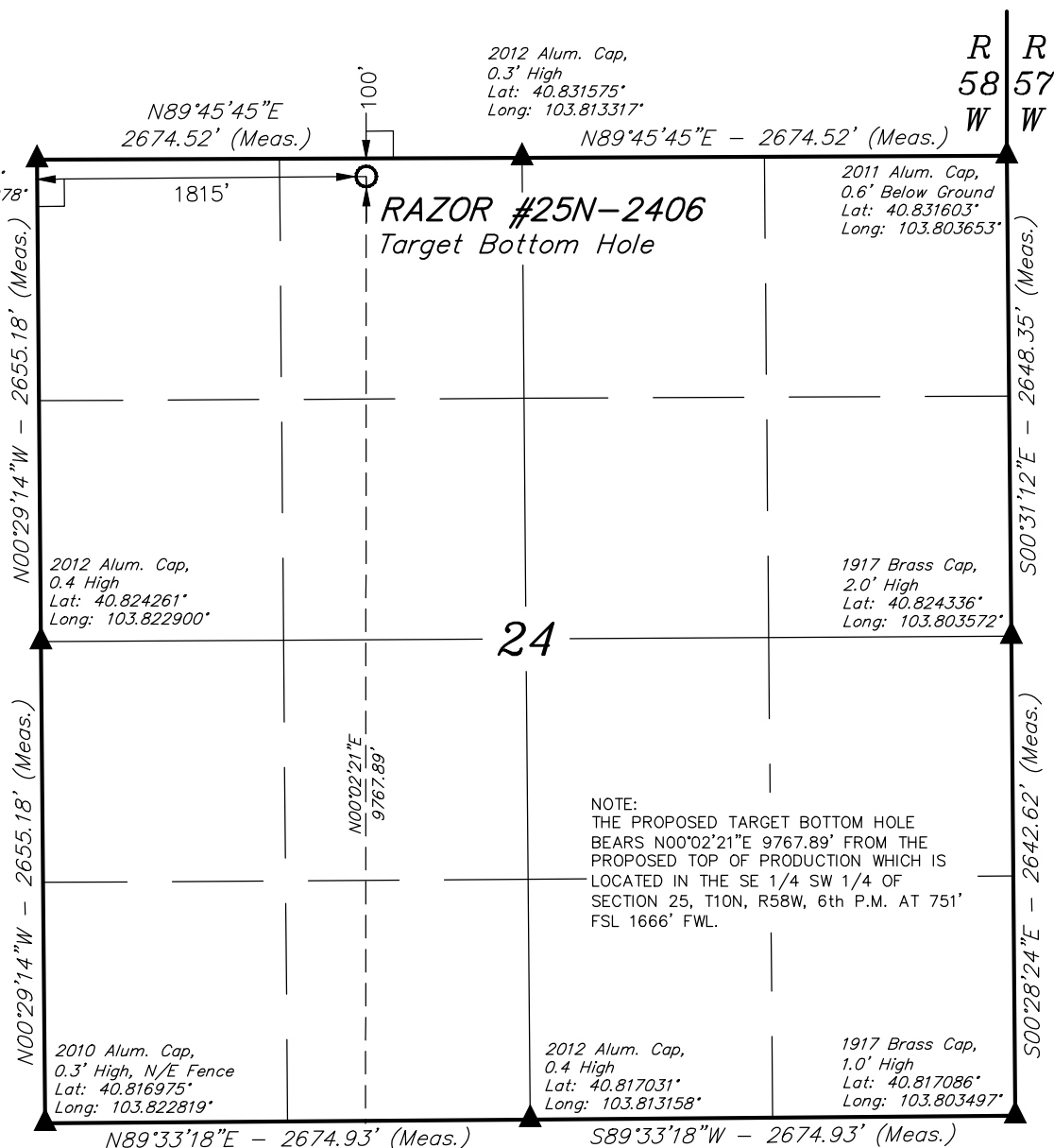
**UELS, LLC**  
Corporate Office \* 85 South 200 East  
Vernal, UT 84078 \* (435) 789-1017



# LEGEND:

- = 90° SYMBOL
- = PROPOSED WELLHEAD.
- = TARGET BOTTOM HOLE.
- = PROPOSED TOP OF PRODUCTION
- = SECTION CORNERS LOCATED.

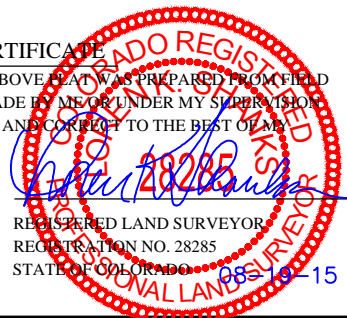
T10N, R58W, 6th P.M.



Proposed Top  
of Production

## CERTIFICATE

THIS IS TO CERTIFY THAT THE ABOVE PLAT WAS PREPARED FROM FIELD NOTES OF ACTUAL SURVEYS MADE BY ME OR UNDER MY SUPERVISION AND THAT THE SAME ARE TRUE AND CORRECT TO THE BEST OF MY KNOWLEDGE AND BELIEF.



### NAD 83 (TARGET BOTTOM HOLE)

LATITUDE = 40°49'52.65" (40.831292)  
LONGITUDE = 103°48'59.11" (103.816419)

### NAD 27 (TARGET BOTTOM HOLE)

LATITUDE = 40°49'52.70" (40.831306)  
LONGITUDE = 103°48'57.30" (103.815917)



## BASIS OF BEARINGS

BASIS OF BEARINGS IS A G.P.S. OBSERVATION

## BASIS OF ELEVATION

SPOT ELEVATION LOCATED AT THE NORTHEAST CORNER OF SECTION 15, T9N, R58W, 6th P.M. TAKEN FROM THE GATEHOOK SPRING, QUADRANGLE, COLORADO, WELD COUNTY, 7.5 MINUTE QUAD (TOPOGRAPHIC MAP) PUBLISHED BY THE UNITED STATES DEPARTMENT OF THE INTERIOR, GEOLOGICAL SURVEY. SAID ELEVATION IS MARKED AS BEING 4679 FEET.

## WHITING OIL & GAS CORP.

**RAZOR #25N-2406 (TARGET BOTTOM HOLE)**  
**NE 1/4 NW 1/4, SECTION 24, T10N, R58W, 6th P.M.**  
**WELD COUNTY, COLORADO**

SURVEYED BY: GREG WEIMER, C.J.	DATE: 03-11-15
DRAWN BY: K.B.	DATE DRAWN: 03-18-15
SCALE: 1" = 1000'	REVISED: K.A. 08-19-15

## WELL LOCATION PLAT



**UELS, LLC**  
Corporate Office \* 85 South 200 East  
Vernal, UT 84078 \* (435) 789-1017

