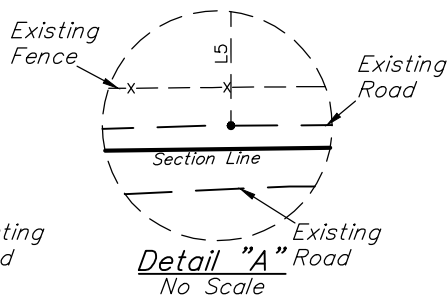
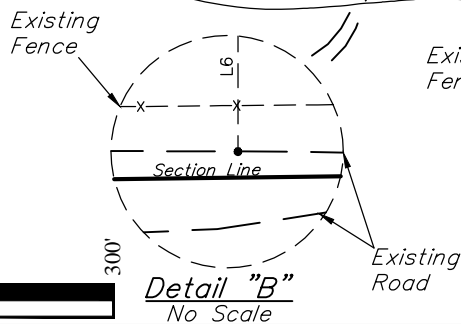
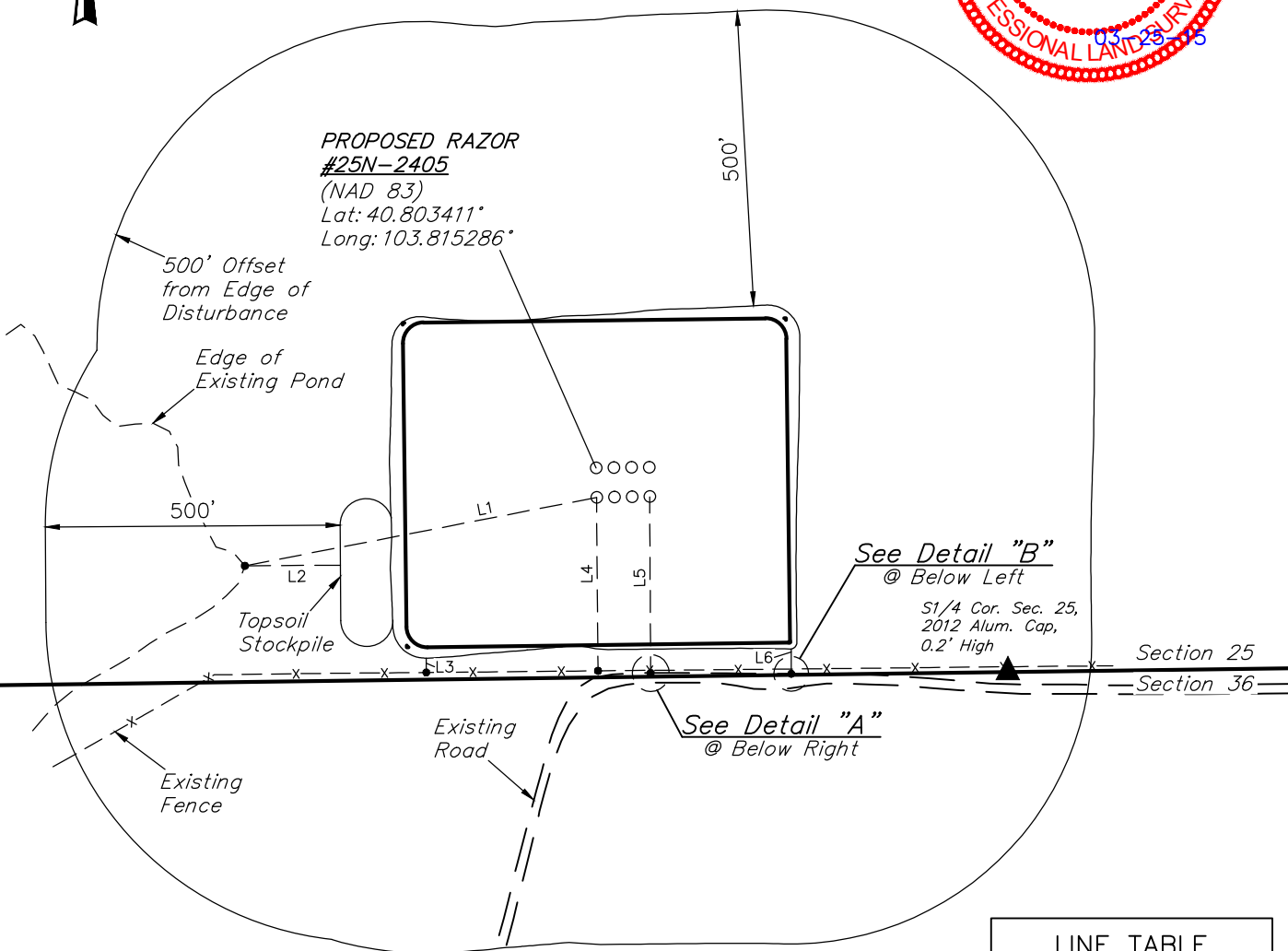


**PROPOSED RAZOR
#25N-2405**
(NAD 83)
Lat: 40.803411°
Long: 103.815286°



LINE TABLE		
LINE	DIRECTION	LENGTH
L1	S79°W	608'
L2	WEST	162'
L3	S01°E	24'
L4	SOUTH	294'
L5	SOUTH	299'
L6	SOUTH	42'



WHITING OIL & GAS CORP.

**RAZOR #25N-2437, 2438, 2439,
2440, 2405, 2406, 2407 & 2408**
SECTION 25, T10N, R58W, 6th P.M.
SE 1/4 SW 1/4
WELD COUNTY, COLORADO



UELS, LLC
Corporate Office * 85 South 200 East
Vernal, UT 84078 * (435) 789-1017

SURVEYED BY: GREG WEIMER, C.J.	SURVEY DATE: 03-11-15
DRAWN BY: K.B.	DATE DRAWN: 03-18-15
SCALE: 1" = 300'	REVISED: 00-00-00

LOCATION DRAWING