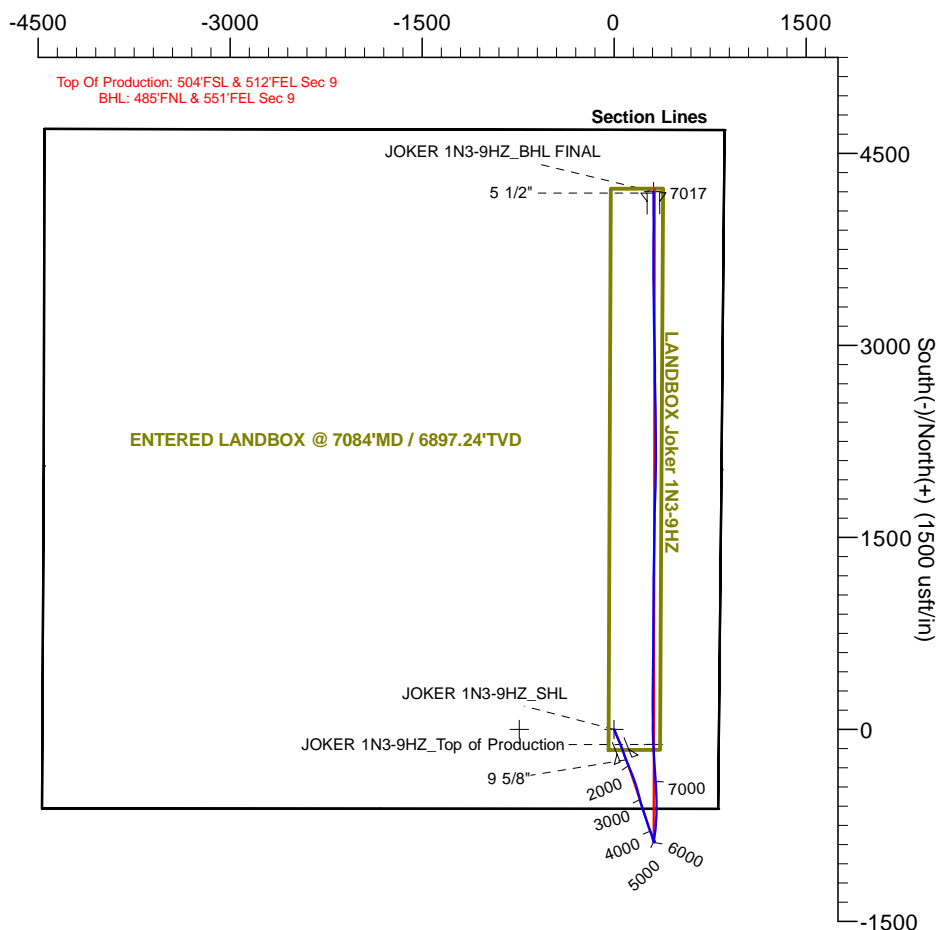
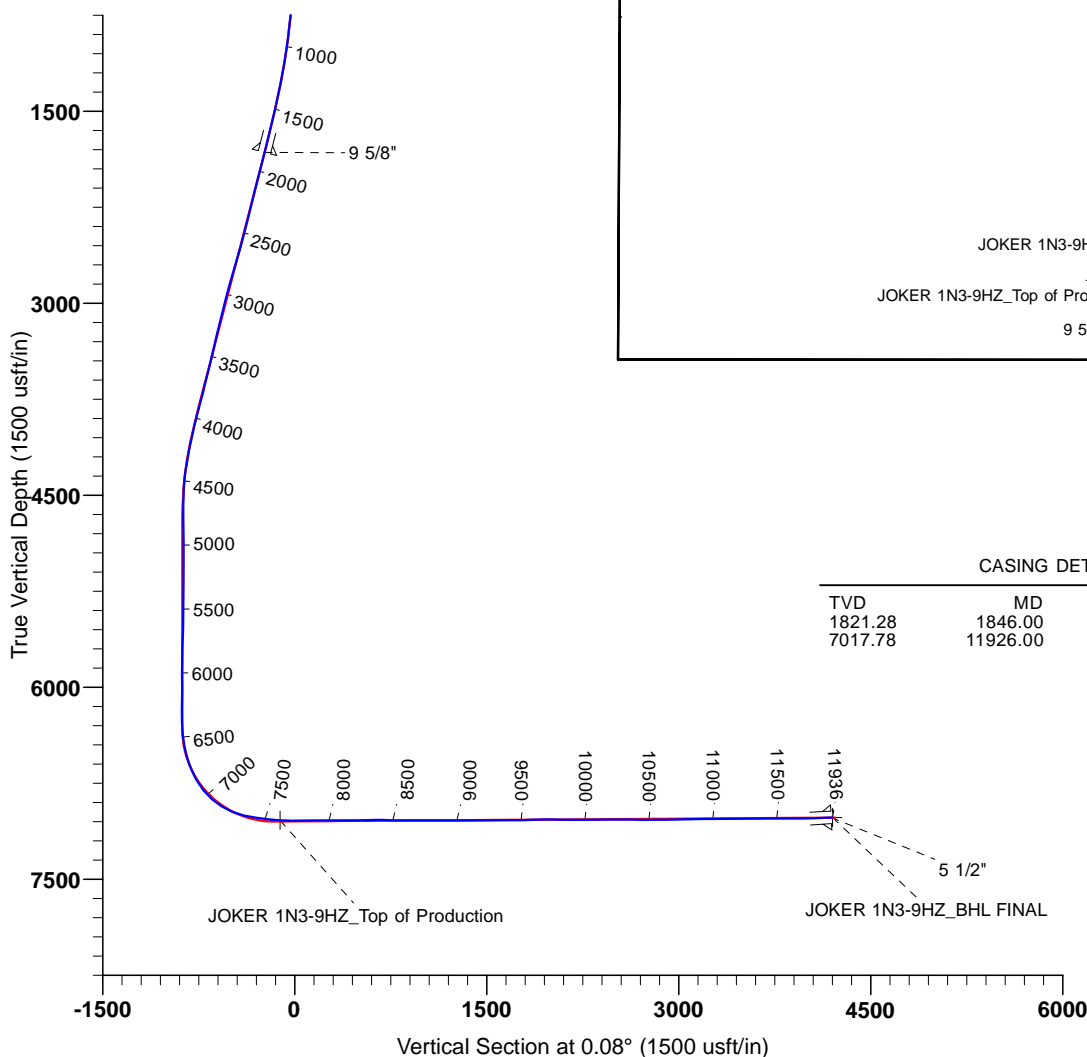


**Anadarko**  
Petroleum Corporation

West(-)/East(+) (1500 usft/in)



FORMATION TOP DETAILS				
TVDPath	MDPath	Formation	DipAngle	DipDir
6987.87	7279.00	Formation 2	0.00	0.08
7004.80	7344.00	Formation 3	0.00	0.08



CASING DETAILS			
TVD	MD	Name	Size
1821.28	1846.00	9 5/8"	9-5/8"
7017.78	11926.00	5 1/2"	5-1/2"

TARGET DETAILS								
Name	TVD	+N/-S	+E/-W	Northing	Easting	Latitude	Longitude	Shape
JOKER 1N3-9HZ_SHL	0.00	0.00	0.00	14548921.95	1734844.69	40.060442	-104.662521	Point
1N-R65W-Sec. 9_Section lines	38.00	0.38	-740.65	14548919.51	1734104.05	40.060443	-104.665168	Polygon
JOKER 1N3-9HZ_BHL FINAL	7017.22	4201.84	307.72	14553124.92	1735136.48	40.071981	-104.661421	Point
JOKER 1N3-9HZ_Top of Production	7040.16	-115.84	307.11	14548807.27	1735152.24	40.060124	-104.661423	Point

# Premier

## Survey Report

<b>Company:</b>	US ROCKIES WATTENBERG PLANNING	<b>Local Co-ordinate Reference:</b>	Well JOKER 1N3-9HZ
<b>Project:</b>	WELD-NAD83-UTMFT13N	<b>TVD Reference:</b>	4969+25 @ 4994.00usft (hp311)
<b>Site:</b>	1N-65W-09 Joker Pad	<b>MD Reference:</b>	4969+25 @ 4994.00usft (hp311)
<b>Well:</b>	JOKER 1N3-9HZ	<b>North Reference:</b>	True
<b>Wellbore:</b>	Plan A	<b>Survey Calculation Method:</b>	Minimum Curvature
<b>Design:</b>	PDD Actual Surveys	<b>Database:</b>	EDM multiuser DB

<b>Project</b>	WELD-NAD83-UTMFT13N		
<b>Map System:</b>	Universal Transverse Mercator (US Survey Feet)	<b>System Datum:</b>	Mean Sea Level
<b>Geo Datum:</b>	North American Datum 1983		
<b>Map Zone:</b>	Zone 13N (108 W to 102 W)		

Site	1N-65W-09 Joker Pad, centered on 1N1				
Site Position:		Northing:	14,548,921.72 usft	Latitude:	40.060442
From:	Lat/Long	Easting:	1,734,784.81 usft	Longitude:	-104.662735
Position Uncertainty:	0.00 usft	Slot Radius:	13-3/16 "	Grid Convergence:	0.22 °

Well		JOKER 1N3-9HZ				
Well Position	+N/-S	0.00 usft	Northing:	14,548,921.94 usft	Latitude:	40.060442
	+E/-W	0.00 usft	Easting:	1,734,844.69 usft	Longitude:	-104.662521
Position Uncertainty		3.28 usft	Wellhead Elevation:	usft	Ground Level:	4,969.00 usft

<b>Wellbore</b>	Plan A				
<b>Magnetics</b>	<b>Model Name</b>	<b>Sample Date</b>	<b>Declination (°)</b>	<b>Dip Angle (°)</b>	<b>Field Strength (nT)</b>
	IGRF2010	10/23/2014	8.33	66.68	52,609

<b>Design</b>	PDD Actual Surveys				
<b>Audit Notes:</b>					
<b>Version:</b>	1.0	<b>Phase:</b>	ACTUAL	<b>Tie On Depth:</b>	0.00
<b>Vertical Section:</b>	<b>Depth From (TVD) (usft)</b>	<b>+N/-S (usft)</b>	<b>+E/-W (usft)</b>	<b>Direction (°)</b>	
	0.00	0.00	0.00		0.08

<b>Survey Program</b>	<b>Date</b>	8/6/2015			
<b>From (usft)</b>	<b>To (usft)</b>	<b>Survey (Wellbore)</b>	<b>Tool Name</b>	<b>Description</b>	
105.00	1,804.00	Cathedral MWD Surface (Plan A)	APC_ISCWSA REV 2 MWD	Fixed:v2:standard declination	
1,947.00	11,876.00	PDD MWD+IFR1 Curve/Lateral (Plan A)	APC_ISCWSA REV 2 MWD+	Fixed:v2:crustal field declination	
11,936.00	11,936.00	PDD Projection (Plan A)	APC_BLIND	OWSG BLIND	

<b>Survey</b>										
<b>Measured Depth (usft)</b>	<b>Inclination (°)</b>	<b>Azimuth (°)</b>	<b>Vertical Depth (usft)</b>	<b>+N/-S (usft)</b>	<b>+E/-W (usft)</b>	<b>Vertical Section (usft)</b>	<b>Dogleg Rate (°/100usft)</b>	<b>Build Rate (°/100usft)</b>	<b>Turn Rate (°/100usft)</b>	
0.00	0.00	0.00	0.00	0.00	0.00	0.00	0.00	0.00	0.00	
105.00	0.20	182.46	105.00	-0.18	-0.01	-0.18	0.19	0.19	0.00	
194.00	0.87	165.53	194.00	-0.99	0.15	-0.99	0.77	0.75	-19.02	
286.00	1.39	135.02	285.98	-2.46	1.12	-2.46	0.85	0.57	-33.16	
382.00	2.97	143.69	381.91	-5.29	3.41	-5.28	1.68	1.65	9.03	
477.00	4.25	154.54	476.72	-10.45	6.38	-10.44	1.52	1.35	11.42	
572.00	4.73	165.43	571.43	-17.42	8.88	-17.40	1.03	0.51	11.46	
667.00	5.31	158.20	666.06	-25.29	11.50	-25.27	0.90	0.61	-7.61	
762.00	5.86	159.22	760.61	-33.91	14.85	-33.88	0.59	0.58	1.07	

# Premier

## Survey Report

<b>Company:</b>	US ROCKIES WATTENBERG PLANNING	<b>Local Co-ordinate Reference:</b>	Well JOKER 1N3-9HZ
<b>Project:</b>	WELD-NAD83-UTMFT13N	<b>TVD Reference:</b>	4969+25 @ 4994.00usft (hp311)
<b>Site:</b>	1N-65W-09 Joker Pad	<b>MD Reference:</b>	4969+25 @ 4994.00usft (hp311)
<b>Well:</b>	JOKER 1N3-9HZ	<b>North Reference:</b>	True
<b>Wellbore:</b>	Plan A	<b>Survey Calculation Method:</b>	Minimum Curvature
<b>Design:</b>	PDD Actual Surveys	<b>Database:</b>	EDM multiuser DB

Survey									
Measured Depth (usft)	Inclination (°)	Azimuth (°)	Vertical Depth (usft)	+N/-S (usft)	+E/-W (usft)	Vertical Section (usft)	Dogleg Rate (°/100usft)	Build Rate (°/100usft)	Turn Rate (°/100usft)
888.00	7.78	154.31	885.71	-47.61	20.83	-47.58	1.59	1.52	-3.90
983.00	8.55	157.82	979.75	-59.94	26.29	-59.90	0.97	0.81	3.69
1,078.00	9.19	159.54	1,073.62	-73.59	31.60	-73.54	0.73	0.67	1.81
1,173.00	10.81	154.40	1,167.17	-88.73	38.11	-88.68	1.95	1.71	-5.41
1,269.00	11.54	155.78	1,261.35	-105.61	45.94	-105.54	0.81	0.76	1.44
1,364.00	13.21	156.81	1,354.14	-124.25	54.11	-124.18	1.77	1.76	1.08
1,458.00	14.11	159.53	1,445.48	-144.86	62.35	-144.77	1.18	0.96	2.89
1,553.00	14.30	160.87	1,537.58	-166.79	70.24	-166.69	0.40	0.20	1.41
1,649.00	13.65	163.38	1,630.74	-188.85	77.37	-188.74	0.93	-0.68	2.61
1,744.00	14.80	159.21	1,722.82	-210.93	84.88	-210.82	1.62	1.21	-4.39
1,804.00	15.27	158.12	1,780.77	-225.43	90.54	-225.30	0.91	0.78	-1.82
1,947.00	15.40	157.90	1,918.68	-260.50	104.70	-260.35	0.10	0.09	-0.15
2,041.00	15.10	158.20	2,009.37	-283.43	113.95	-283.27	0.33	-0.32	0.32
2,135.00	14.00	157.10	2,100.35	-305.27	122.92	-305.10	1.21	-1.17	-1.17
2,230.00	15.30	157.50	2,192.26	-327.44	132.19	-327.25	1.37	1.37	0.42
2,325.00	16.00	158.70	2,283.74	-351.22	141.74	-351.02	0.81	0.74	1.26
2,419.00	15.30	158.20	2,374.25	-374.80	151.05	-374.59	0.76	-0.74	-0.53
2,513.00	16.00	162.60	2,464.77	-398.68	159.53	-398.46	1.47	0.74	4.68
2,608.00	15.30	162.70	2,556.25	-423.14	167.17	-422.91	0.74	-0.74	0.11
2,702.00	16.80	162.60	2,646.58	-447.95	174.93	-447.70	1.60	1.60	-0.11
2,797.00	17.80	164.00	2,737.28	-475.01	183.03	-474.75	1.14	1.05	1.47
2,891.00	16.20	165.10	2,827.17	-501.49	190.37	-501.23	1.74	-1.70	1.17
2,986.00	14.50	166.40	2,918.78	-525.86	196.57	-525.59	1.83	-1.79	1.37
3,080.00	15.60	163.80	3,009.56	-549.44	202.86	-549.15	1.37	1.17	-2.77
3,174.00	15.00	163.70	3,100.23	-573.25	209.80	-572.96	0.64	-0.64	-0.11
3,269.00	13.50	166.10	3,192.30	-595.81	215.92	-595.51	1.70	-1.58	2.53
3,363.00	14.50	161.50	3,283.51	-617.63	222.29	-617.32	1.59	1.06	-4.89
3,458.00	13.60	157.60	3,375.67	-639.23	230.32	-638.91	1.37	-0.95	-4.11
3,552.00	14.20	160.90	3,466.92	-660.35	238.30	-660.01	1.06	0.64	3.51
3,647.00	15.50	161.90	3,558.74	-683.42	246.06	-683.08	1.39	1.37	1.05
3,741.00	13.50	162.60	3,649.74	-705.83	253.25	-705.48	2.14	-2.13	0.74
3,836.00	14.90	162.00	3,741.84	-728.03	260.34	-727.67	1.48	1.47	-0.63
3,930.00	16.80	162.40	3,832.26	-752.48	268.18	-752.10	2.02	2.02	0.43
4,025.00	14.70	159.80	3,923.69	-776.88	276.49	-776.49	2.33	-2.21	-2.74
4,119.00	13.10	159.30	4,014.93	-798.04	284.38	-797.64	1.71	-1.70	-0.53
4,214.00	12.00	157.10	4,107.66	-817.21	292.03	-816.80	1.26	-1.16	-2.32
4,308.00	11.20	162.60	4,199.75	-834.92	298.56	-834.50	1.45	-0.85	5.85
4,403.00	9.30	165.60	4,293.23	-851.16	303.23	-850.74	2.08	-2.00	3.16
4,497.00	5.40	160.30	4,386.44	-862.69	306.61	-862.26	4.21	-4.15	-5.64
4,591.00	2.90	127.70	4,480.20	-868.31	309.98	-867.87	3.56	-2.66	-34.68
4,686.00	2.20	120.50	4,575.10	-870.70	313.45	-870.26	0.81	-0.74	-7.58
4,781.00	0.90	10.30	4,670.08	-870.89	315.16	-870.45	2.79	-1.37	-116.00
4,875.00	1.50	10.50	4,764.06	-868.96	315.52	-868.52	0.64	0.64	0.21

# Premier Survey Report

<b>Company:</b>	US ROCKIES WATTENBERG PLANNING	<b>Local Co-ordinate Reference:</b>	Well JOKER 1N3-9HZ
<b>Project:</b>	WELD-NAD83-UTMFT13N	<b>TVD Reference:</b>	4969+25 @ 4994.00usft (hp311)
<b>Site:</b>	1N-65W-09 Joker Pad	<b>MD Reference:</b>	4969+25 @ 4994.00usft (hp311)
<b>Well:</b>	JOKER 1N3-9HZ	<b>North Reference:</b>	True
<b>Wellbore:</b>	Plan A	<b>Survey Calculation Method:</b>	Minimum Curvature
<b>Design:</b>	PDD Actual Surveys	<b>Database:</b>	EDM multiuser DB

Survey									
Measured Depth (usft)	Inclination (°)	Azimuth (°)	Vertical Depth (usft)	+N/-S (usft)	+E/-W (usft)	Vertical Section (usft)	Dogleg Rate (°/100usft)	Build Rate (°/100usft)	Turn Rate (°/100usft)
4,970.00	0.90	268.50	4,859.04	-867.75	315.00	-867.31	2.00	-0.63	-107.37
5,064.00	1.10	289.20	4,953.03	-867.48	313.41	-867.04	0.44	0.21	22.02
5,159.00	1.00	199.30	5,048.02	-867.96	312.27	-867.52	1.56	-0.11	-94.63
5,253.00	0.40	217.80	5,142.01	-868.99	311.80	-868.56	0.67	-0.64	19.68
5,348.00	0.20	145.80	5,237.01	-869.39	311.69	-868.96	0.41	-0.21	-75.79
5,442.00	0.20	24.60	5,331.01	-869.38	311.85	-868.94	0.37	0.00	-128.94
5,537.00	1.60	181.50	5,426.00	-870.55	311.88	-870.12	1.88	1.47	165.16
5,631.00	1.70	177.70	5,519.96	-873.26	311.90	-872.82	0.16	0.11	-4.04
5,725.00	1.50	172.70	5,613.92	-875.87	312.12	-875.44	0.26	-0.21	-5.32
5,819.00	1.50	156.00	5,707.89	-878.22	312.77	-877.78	0.46	0.00	-17.77
5,914.00	1.20	145.00	5,802.86	-880.17	313.85	-879.73	0.42	-0.32	-11.58
6,008.00	1.10	133.10	5,896.85	-881.59	315.07	-881.15	0.27	-0.11	-12.66
6,103.00	0.40	254.40	5,991.84	-882.30	315.42	-881.86	1.42	-0.74	127.68
6,197.00	0.70	317.20	6,085.84	-881.97	314.71	-881.53	0.67	0.32	66.81
6,292.00	0.80	304.60	6,180.83	-881.17	313.77	-880.73	0.20	0.11	-13.26
6,386.00	0.60	297.60	6,274.82	-880.57	312.80	-880.13	0.23	-0.21	-7.45
6,481.00	4.90	4.30	6,369.70	-876.29	312.66	-875.85	4.94	4.53	70.21
6,575.00	12.30	2.70	6,462.58	-862.26	313.43	-861.82	7.88	7.87	-1.70
6,670.00	16.60	6.20	6,554.55	-838.65	315.38	-838.21	4.62	4.53	3.68
6,764.00	22.80	11.80	6,643.01	-807.44	320.56	-806.99	6.89	6.60	5.96
6,859.00	30.00	7.30	6,728.06	-765.81	327.35	-765.35	7.86	7.58	-4.74
6,954.00	38.70	0.60	6,806.44	-712.43	330.69	-711.97	9.97	9.16	-7.05
7,049.00	48.80	359.30	6,874.98	-646.83	330.56	-646.36	10.67	10.63	-1.37
7,144.00	58.10	0.40	6,931.50	-570.59	330.40	-570.13	9.83	9.79	1.16
7,238.00	68.20	358.50	6,973.90	-486.85	329.54	-486.39	10.89	10.74	-2.02
7,333.00	76.90	356.00	7,002.36	-396.42	325.15	-395.97	9.49	9.16	-2.63
7,427.00	81.80	355.80	7,019.73	-304.30	318.54	-303.86	5.22	5.21	-0.21
7,522.00	83.40	355.80	7,031.97	-210.35	311.64	-209.92	1.68	1.68	0.00
7,617.00	86.70	358.70	7,040.16	-115.84	307.11	-115.41	4.62	3.47	3.05
7,711.00	89.80	359.30	7,043.03	-21.91	305.47	-21.48	3.36	3.30	0.64
7,806.00	91.70	359.00	7,041.79	73.07	304.06	73.49	2.02	2.00	-0.32
7,901.00	90.60	359.40	7,039.88	168.04	302.74	168.46	1.23	-1.16	0.42
7,996.00	89.30	0.60	7,039.97	263.03	302.74	263.46	1.86	-1.37	1.26
8,090.00	90.70	0.60	7,039.97	357.03	303.72	357.45	1.49	1.49	0.00
8,185.00	89.80	0.30	7,039.55	452.02	304.47	452.45	1.00	-0.95	-0.32
8,280.00	91.40	0.10	7,038.56	547.01	304.80	547.44	1.70	1.68	-0.21
8,374.00	90.10	1.00	7,037.33	641.00	305.70	641.42	1.68	-1.38	0.96
8,469.00	88.40	0.40	7,038.57	735.98	306.86	736.41	1.90	-1.79	-0.63
8,563.00	90.10	0.50	7,039.80	829.96	307.60	830.39	1.81	1.81	0.11
8,658.00	89.00	0.10	7,040.55	924.96	308.10	925.39	1.23	-1.16	-0.42
8,752.00	90.30	0.00	7,041.12	1,018.95	308.18	1,019.38	1.39	1.38	-0.11
8,847.00	89.10	0.50	7,041.62	1,113.95	308.59	1,114.38	1.37	-1.26	0.53
8,942.00	90.50	0.30	7,041.95	1,208.95	309.26	1,209.38	1.49	1.47	-0.21

# Premier

## Survey Report

<b>Company:</b>	US ROCKIES WATTENBERG PLANNING	<b>Local Co-ordinate Reference:</b>	Well JOKER 1N3-9HZ
<b>Project:</b>	WELD-NAD83-UTMFT13N	<b>TVD Reference:</b>	4969+25 @ 4994.00usft (hp311)
<b>Site:</b>	1N-65W-09 Joker Pad	<b>MD Reference:</b>	4969+25 @ 4994.00usft (hp311)
<b>Well:</b>	JOKER 1N3-9HZ	<b>North Reference:</b>	True
<b>Wellbore:</b>	Plan A	<b>Survey Calculation Method:</b>	Minimum Curvature
<b>Design:</b>	PDD Actual Surveys	<b>Database:</b>	EDM multiuser DB

Survey										
Measured Depth (usft)	Inclination (°)	Azimuth (°)	Vertical Depth (usft)	+N/-S (usft)	+E/-W (usft)	Vertical Section (usft)	Dogleg Rate (°/100usft)	Build Rate (°/100usft)	Turn Rate (°/100usft)	
9,036.00	89.50	1.20	7,041.95	1,302.93	310.49	1,303.37	1.43	-1.06	0.96	
9,131.00	91.90	1.30	7,040.79	1,397.90	312.56	1,398.33	2.53	2.53	0.11	
9,225.00	90.10	1.10	7,039.15	1,491.86	314.53	1,492.30	1.93	-1.91	-0.21	
9,320.00	90.90	0.60	7,038.32	1,586.84	315.94	1,587.28	0.99	0.84	-0.53	
9,414.00	89.20	1.60	7,038.24	1,680.82	317.74	1,681.26	2.10	-1.81	1.06	
9,509.00	90.50	2.30	7,038.49	1,775.76	320.97	1,776.21	1.55	1.37	0.74	
9,603.00	92.60	1.80	7,035.94	1,869.66	324.33	1,870.12	2.30	2.23	-0.53	
9,698.00	90.50	0.30	7,033.38	1,964.61	326.07	1,965.06	2.72	-2.21	-1.58	
9,793.00	88.00	359.90	7,034.62	2,059.59	326.24	2,060.04	2.67	-2.63	-0.42	
9,887.00	88.90	0.20	7,037.16	2,153.55	326.32	2,154.01	1.01	0.96	0.32	
9,982.00	90.30	0.00	7,037.82	2,248.55	326.49	2,249.00	1.49	1.47	-0.21	
10,077.00	92.40	0.00	7,035.59	2,343.52	326.49	2,343.97	2.21	2.21	0.00	
10,171.00	90.40	359.20	7,033.29	2,437.48	325.83	2,437.93	2.29	-2.13	-0.85	
10,266.00	88.30	358.70	7,034.37	2,532.45	324.09	2,532.90	2.27	-2.21	-0.53	
10,360.00	88.90	359.10	7,036.66	2,626.41	322.29	2,626.86	0.77	0.64	0.43	
10,455.00	90.90	359.30	7,036.83	2,721.39	320.96	2,721.84	2.12	2.11	0.21	
10,550.00	89.90	359.30	7,036.17	2,816.38	319.80	2,816.83	1.05	-1.05	0.00	
10,644.00	91.20	359.30	7,035.26	2,910.37	318.65	2,910.81	1.38	1.38	0.00	
10,739.00	92.70	359.00	7,032.03	3,005.30	317.24	3,005.74	1.61	1.58	-0.32	
10,834.00	90.70	358.20	7,029.21	3,100.23	314.92	3,100.66	2.27	-2.11	-0.84	
10,929.00	89.50	358.50	7,029.05	3,195.18	312.19	3,195.62	1.30	-1.26	0.32	
11,023.00	90.70	358.70	7,028.88	3,289.15	309.89	3,289.58	1.29	1.28	0.21	
11,118.00	89.10	359.50	7,029.05	3,384.14	308.40	3,384.57	1.88	-1.68	0.84	
11,213.00	90.50	359.80	7,029.38	3,479.13	307.82	3,479.56	1.51	1.47	0.32	
11,308.00	92.40	359.80	7,026.98	3,574.10	307.49	3,574.52	2.00	2.00	0.00	
11,402.00	89.90	0.30	7,025.09	3,668.07	307.57	3,668.50	2.71	-2.66	0.53	
11,497.00	91.30	0.30	7,024.10	3,763.06	308.07	3,763.49	1.47	1.47	0.00	
11,592.00	88.40	0.50	7,024.34	3,858.05	308.73	3,858.48	3.06	-3.05	0.21	
11,687.00	90.00	0.00	7,025.67	3,953.04	309.14	3,953.46	1.76	1.68	-0.53	
11,782.00	91.50	359.70	7,024.43	4,048.03	308.90	4,048.45	1.61	1.58	-0.32	
11,876.00	93.20	359.50	7,020.57	4,141.94	308.24	4,142.37	1.82	1.81	-0.21	
11,936.00	93.20	359.50	7,017.22	4,201.84	307.72	4,202.27	0.00	0.00	0.00	