

**Premier Directional Drilling**

12941 North Freeway
400
Houston, TX 77060
281-673-4000

Joker 1N1-9HZ**Scale 5":100' - MD****7/28/2015 8:32 AM****Oper. Company:** Anadarko Petroleum Corporation**State:** Colorado**Well:** Joker 1N1-9HZ**County:** Weld**Field:** Wattenberg**Country:** USA**Rig:** H & P 311**Location:** 1N 65W Sect 9**Well ID:** 05123413260000**Start Date:** 07/26/2015 00:31:00**Job Number:** R15295**End Date:** 07/27/2015 12:55:00


Notes: Recorded Mode Log
Gamma Correction Determined by Pipe ID & OD, Mud Weight & Bit Size


Latitude: 40.060442**Elev KB:** 4994'**Longitude:** -104.662735**Elev DF:** 4994'**Elev GL:** 4969'**Notes:** Datum: NAD 1983 Map Zone: 13N (108 W to 102 W) Total Correction: 8.12° (Mean MagVar) Grid Convergence: 0.00° (True)**Operator 1:** Robert Grossman**Operator 2:** John Kent**Notes:** Smoothing: 7Gap Fill: 10Survey Tool Type: Mud Pulse Calculation Method: Minimum Curvature

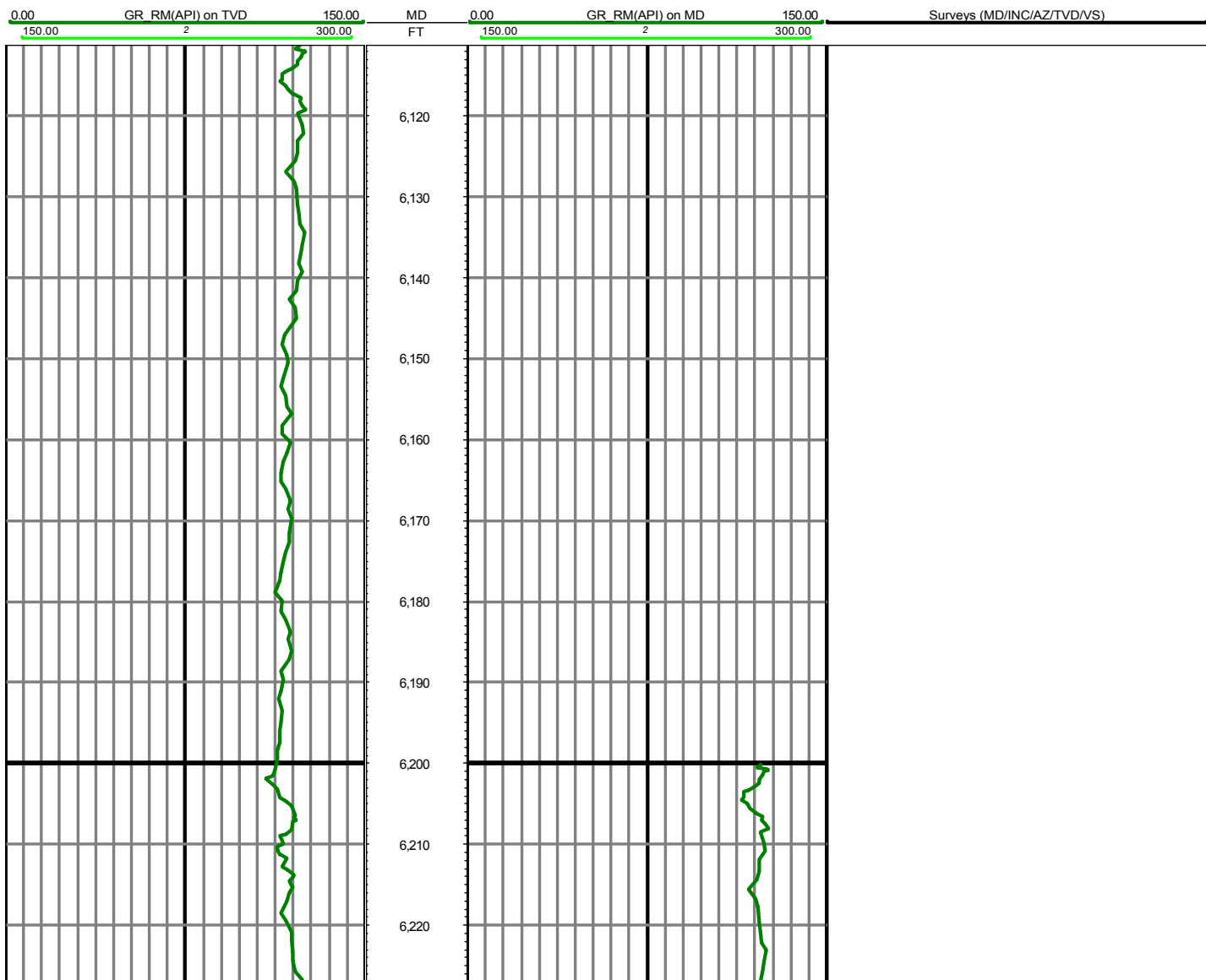
Tool Run Data	Run #1	Run #2	Run #3	Run #4	Run #5
Tool S/N	DM1319/G161				
Bit Size	8.5				
Cal Factor	6.002279				
Gamma Offset	47.00				
Resistivity Offset	0.00				
Start Depth	1867.00				
StartDate	7/24/2015				
StartTime	10:45 PM				
EndDepth	12040.00				
EndDate	7/27/2015				
EndTime	11:00 PM				
Mud Type	OBM				
Mud Weight	9.3				
Funnel Viscosity	56				
Plastic Viscosity	18				
Yield Point	11				
Gel Strength	N/A				
Solids Content	5.3				
Sand Content	NA				
Mud Alkalinity	NA				
Filtrate Alkalinity	N/A				
Chlorides	58000				
Mud RM	N/A				
Mud RMF	N/A				
Mud RMC	N/A				
Mud RM at BHT	N/A				
Temperature	N/A				

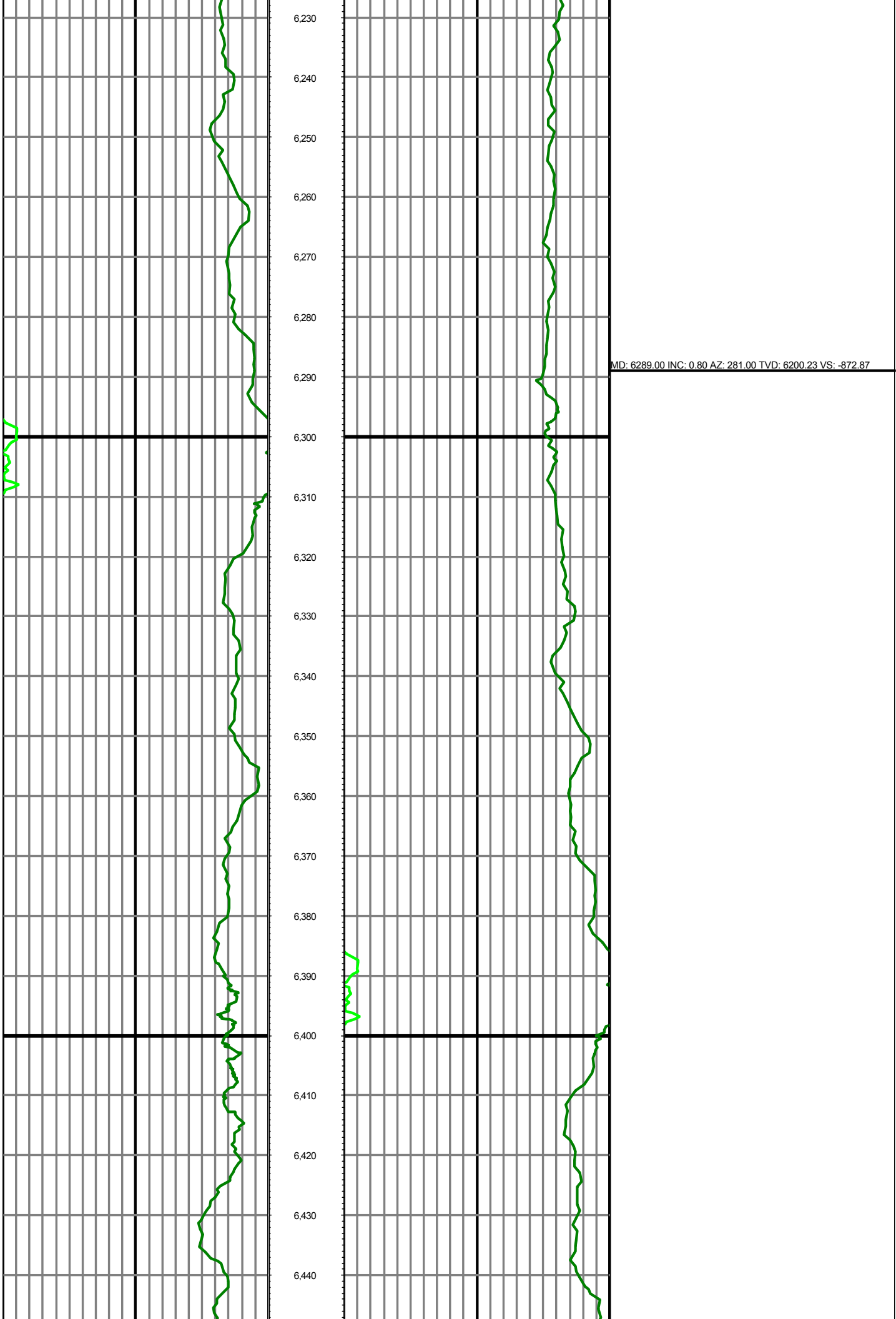
Hole Data			Casing Data		
Size	From	To	Size	From	To
13.5	0.00	1867.00	13.5	0.00	1857.00
8.5	1867.00	12040.00	8.5	0.00	12040.00

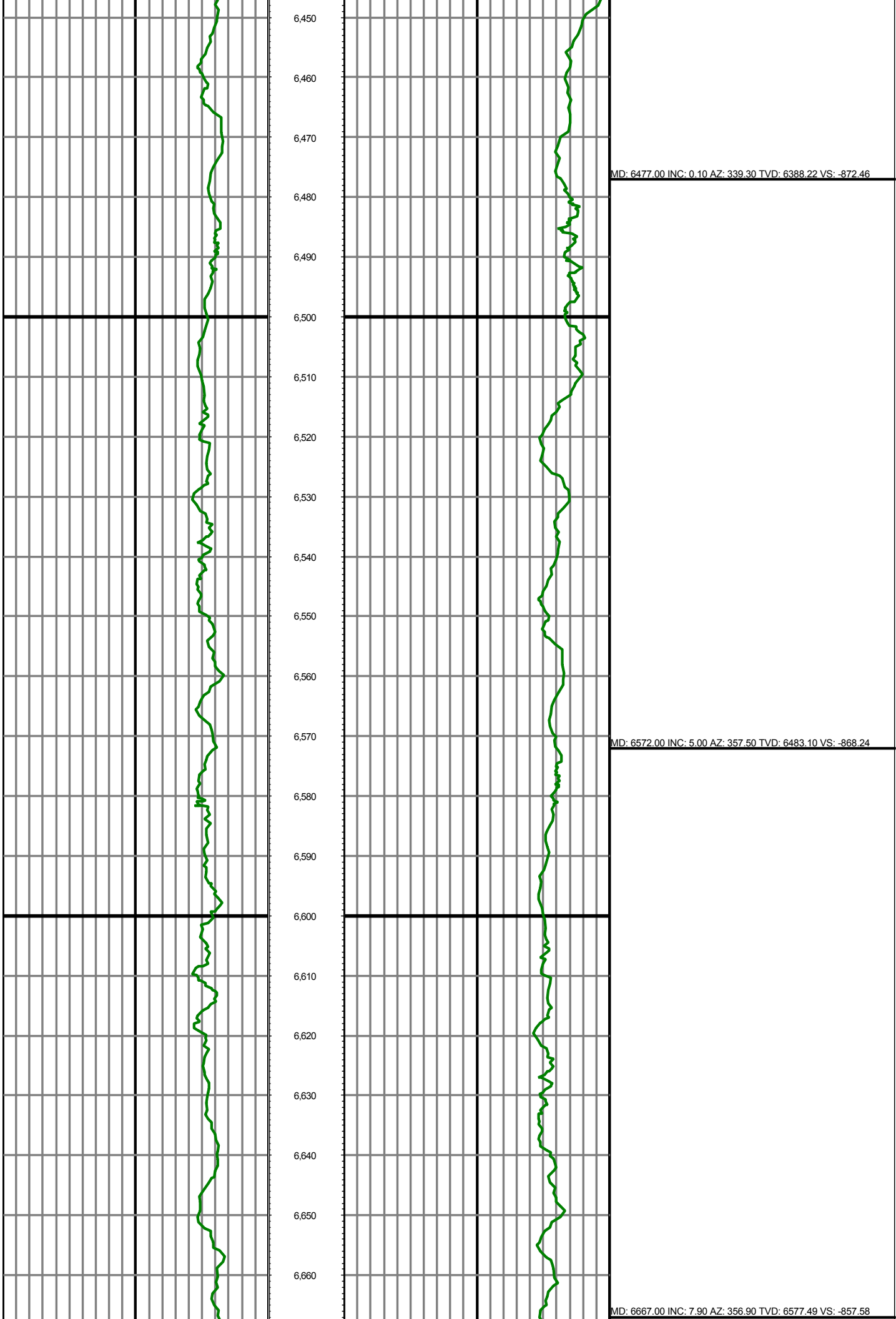
BHA Data

Picture	Type	Length	Description
	Bit	0.7	Baker T405s

	Motor	29.03	Turbo Drill 4/5 7stg. 1.75 Fixed
	Sub2	3.45	NMDC Pony
	Sub2	29.69	NM UBHO
	Sub2	30.42	NMDC Slick
	Sub2	11.1	NMDC Flex
	Sub2	5.89	Filter Sub



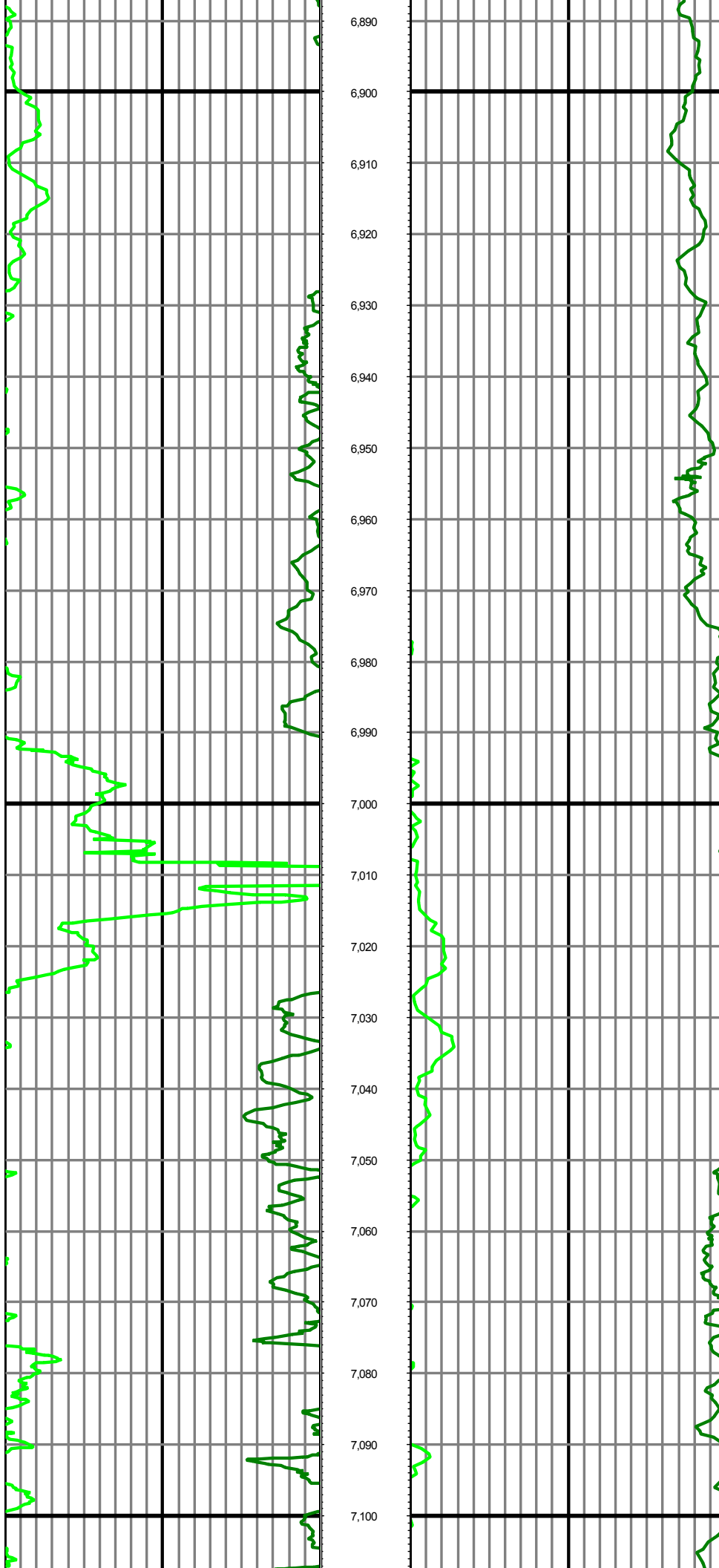




MD: 6667.00 INC: 7.90 AZ: 356.90 TVD: 6577.49 VS: -857.58

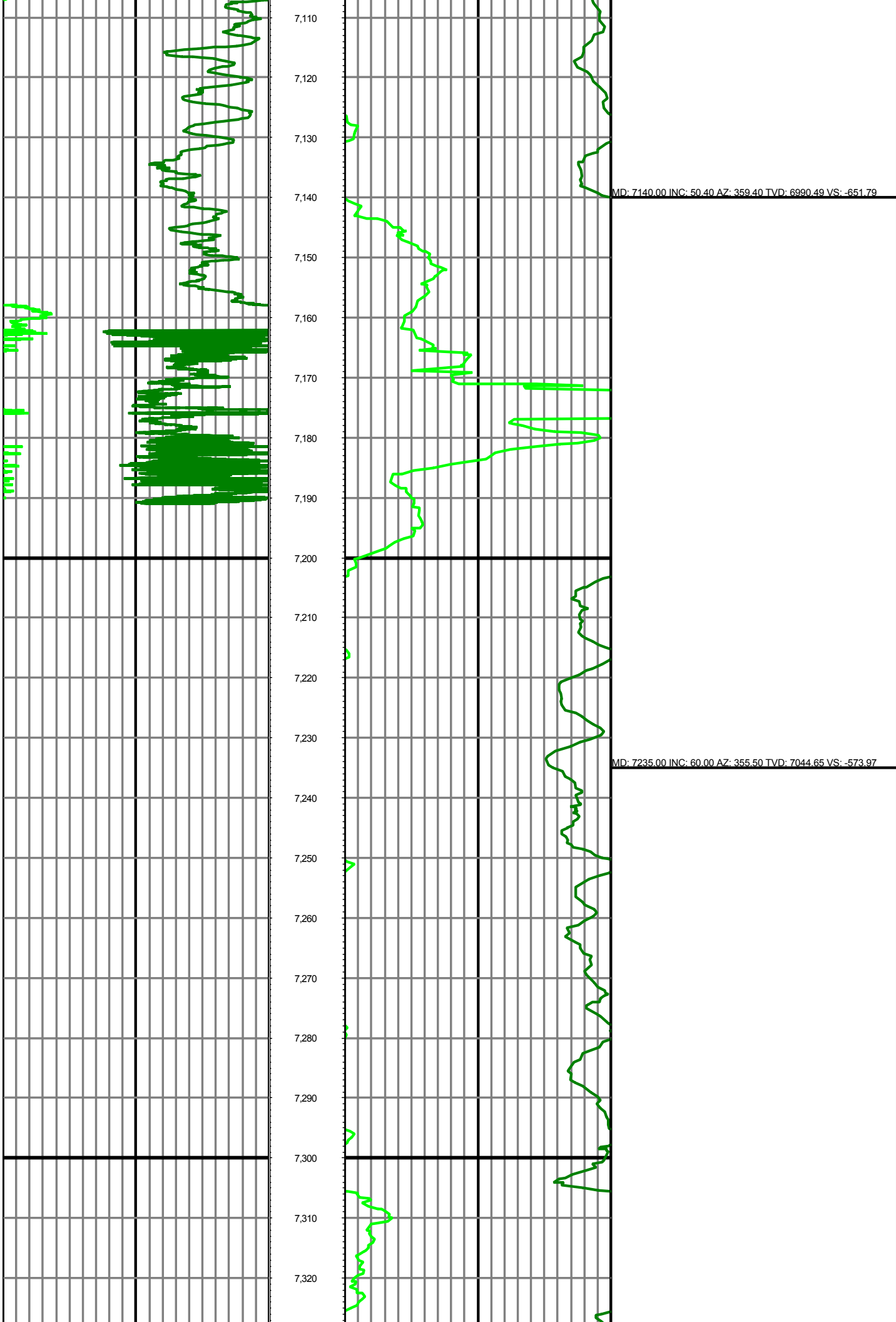
MD: 6761.00 INC: 13.80 AZ: 359.90 TVD: 6669.77 VS: -839.91

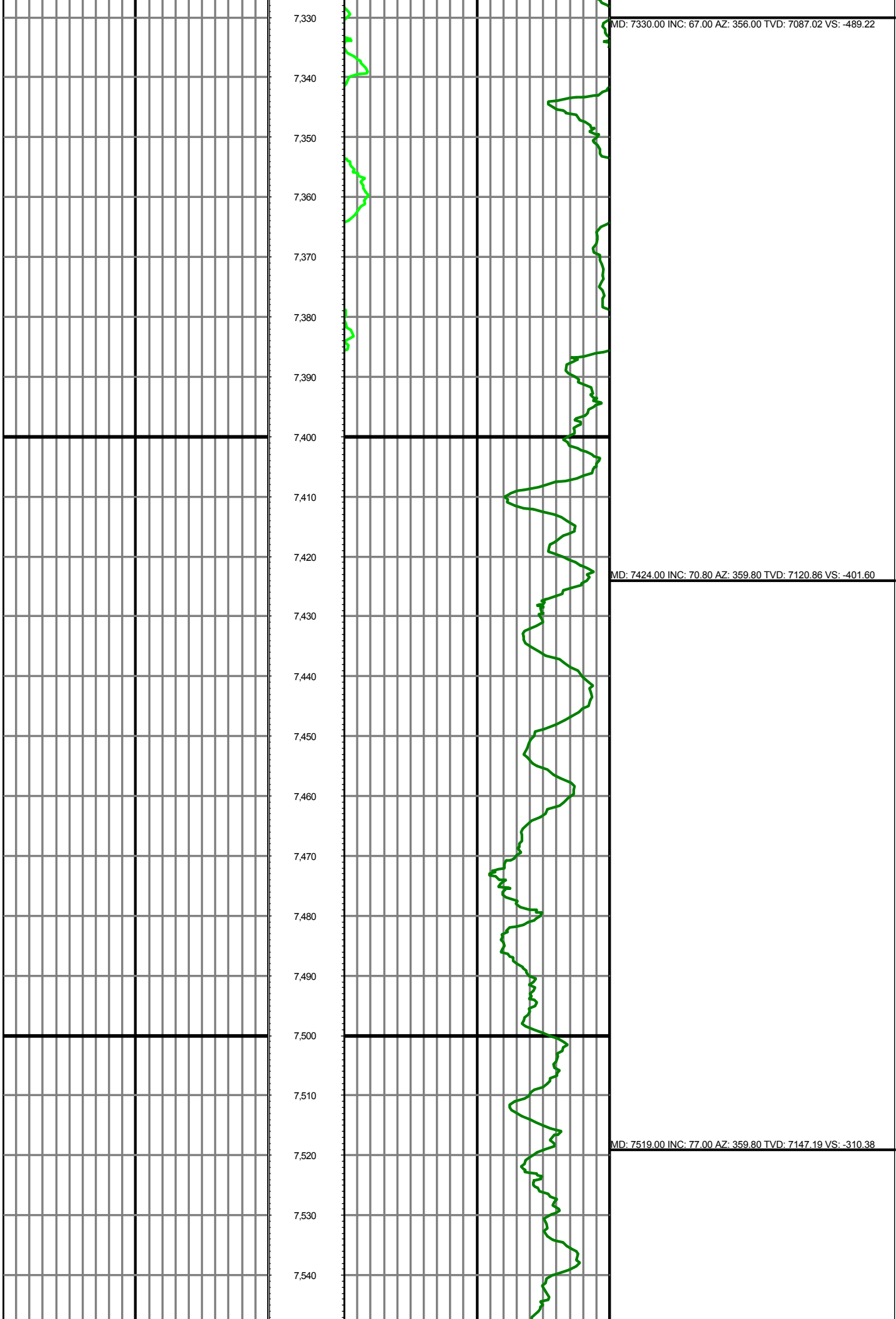
MD: 6856.00 INC: 19.60 AZ: 2.00 TVD: 6760.72 VS: -812.63

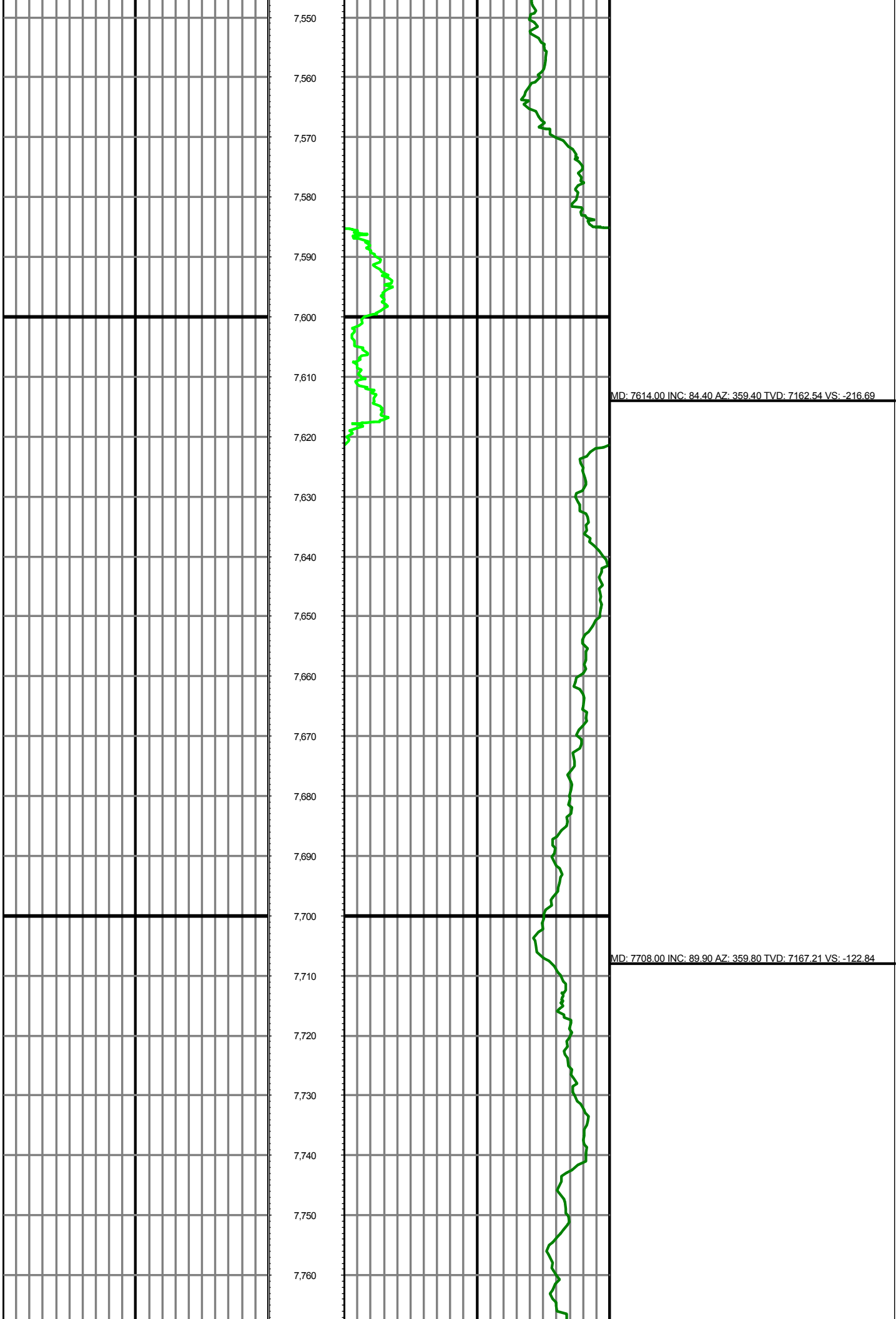


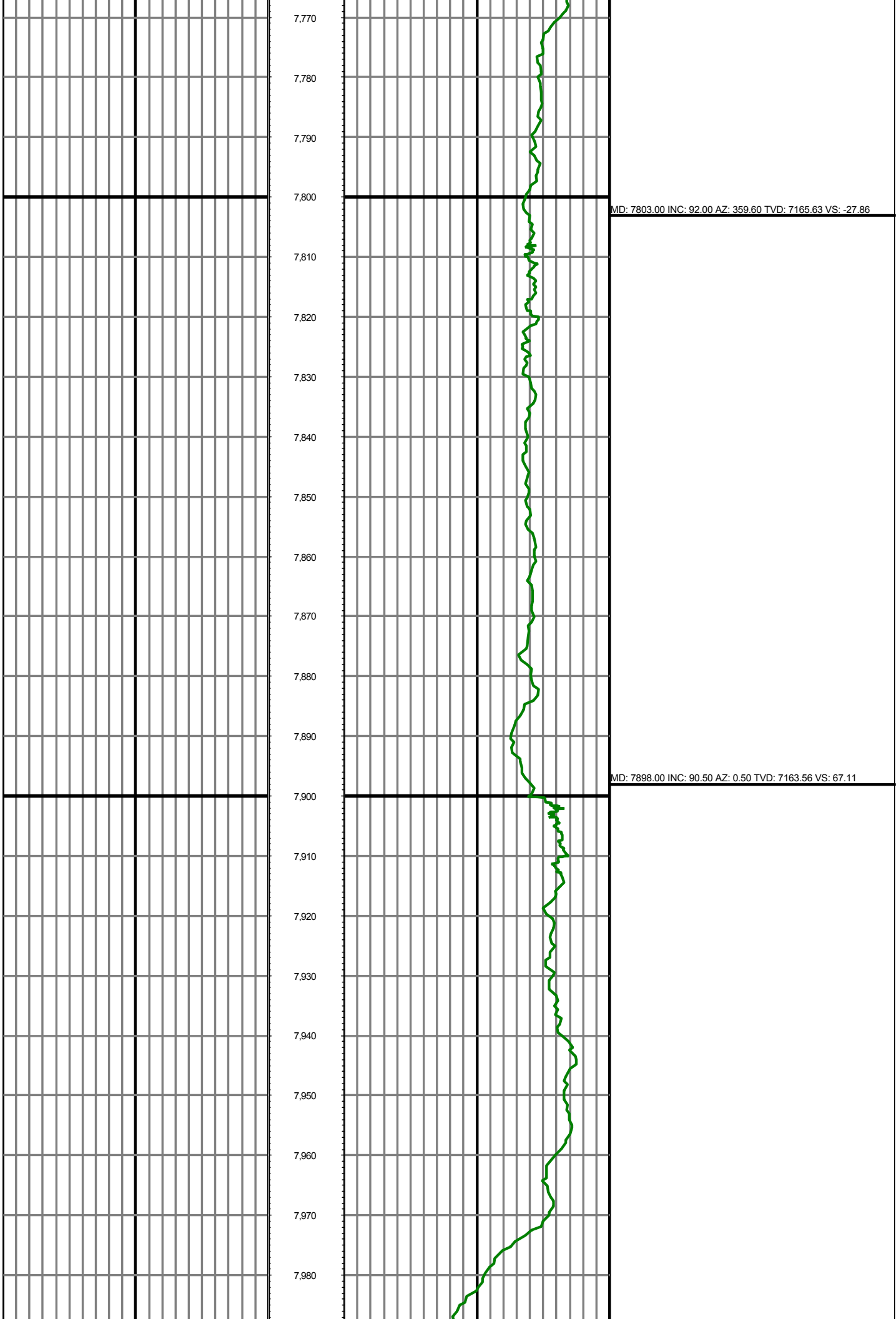
MD: 6951.00 INC: 29.50 AZ: 0.50 TVD: 6847.03 VS: -773.22

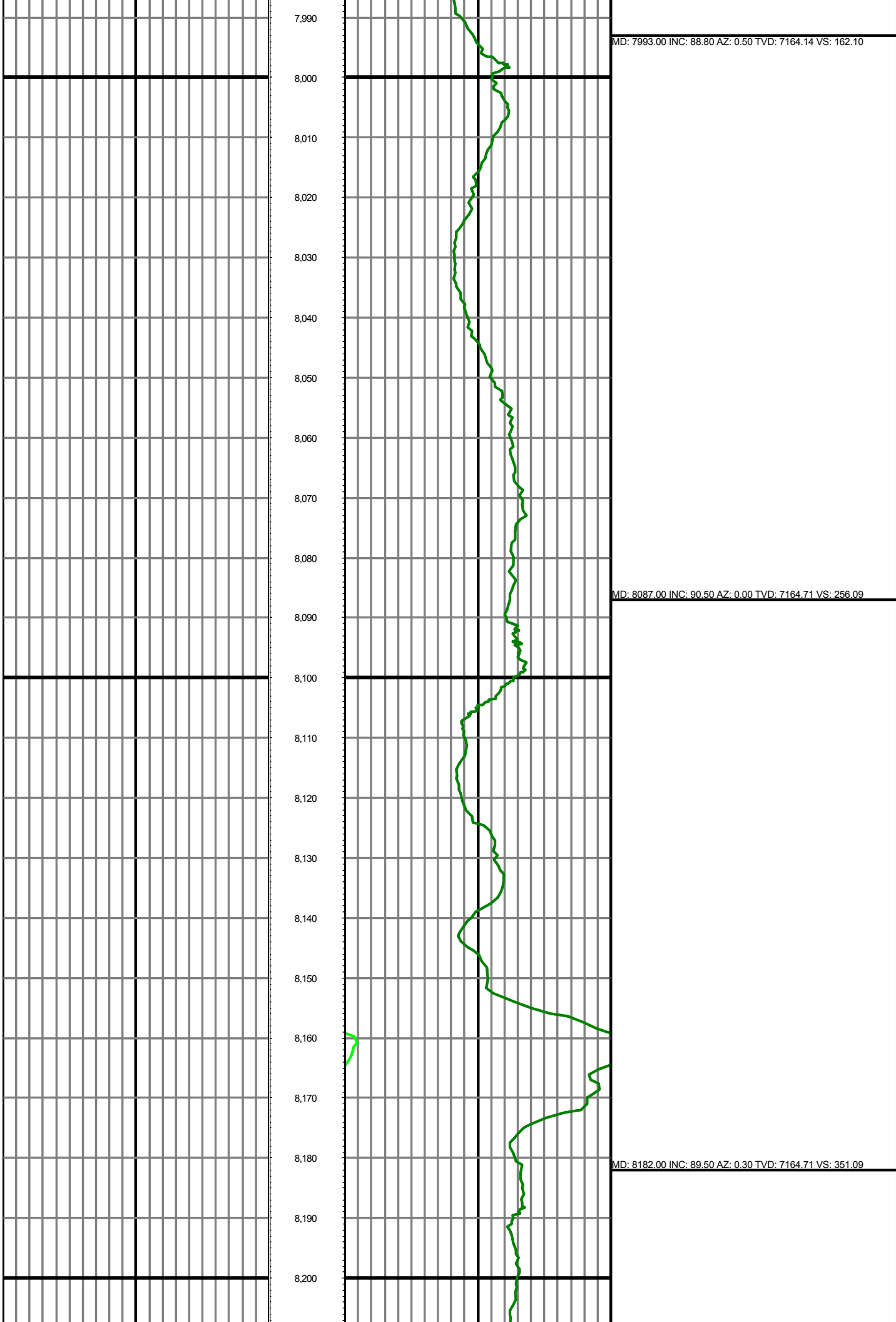
MD: 7046.00 INC: 40.60 AZ: 0.80 TVD: 6924.68 VS: -718.75

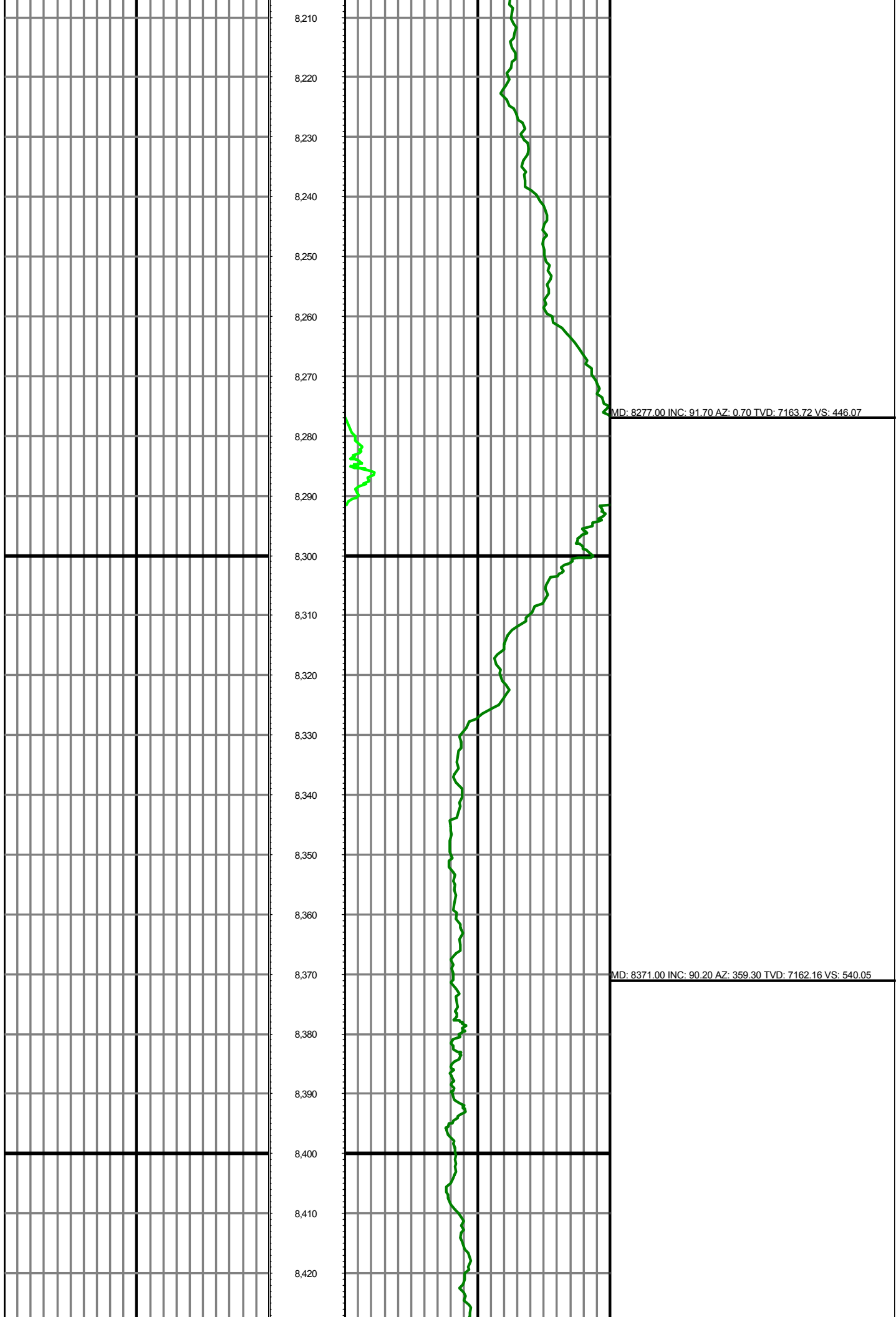


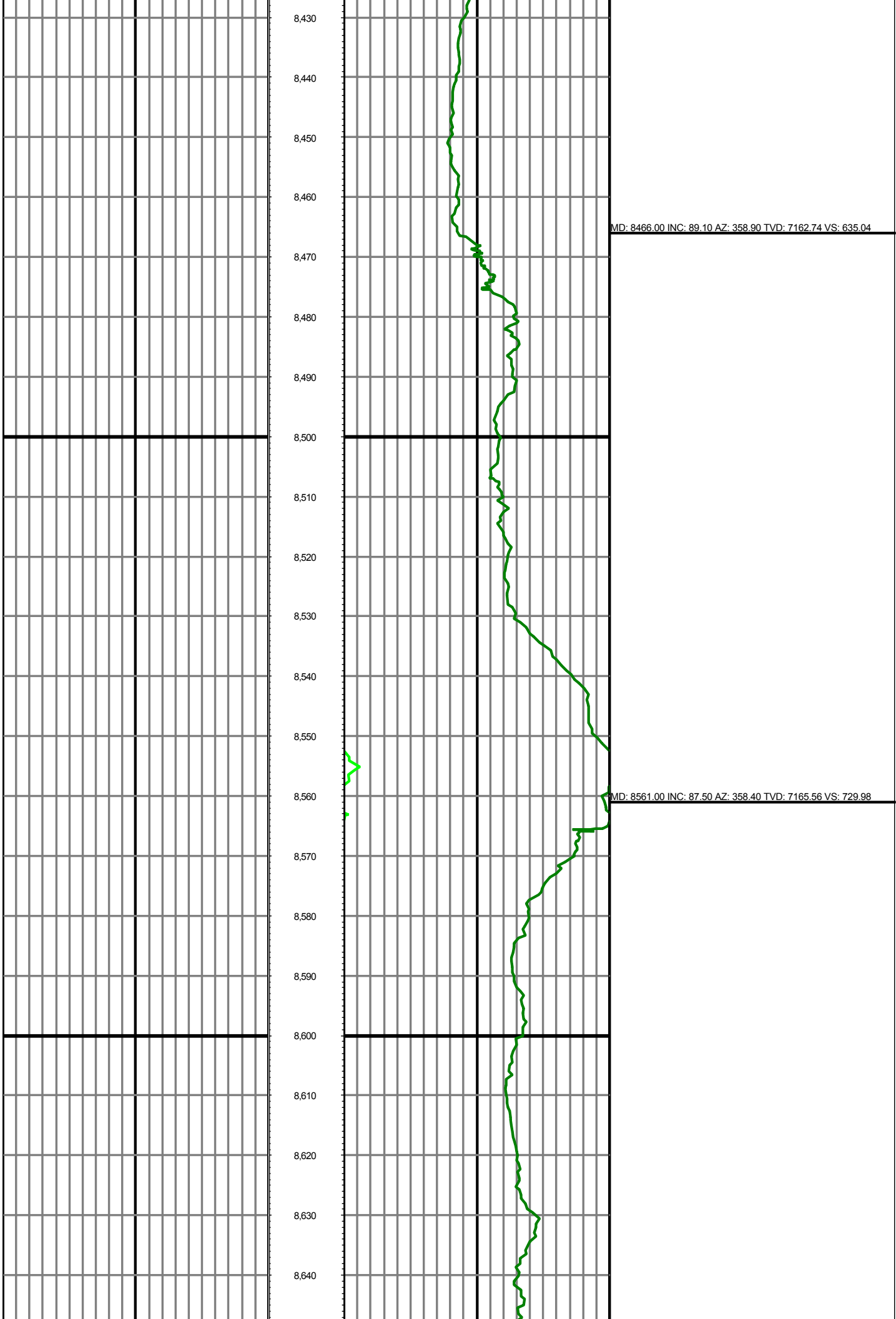


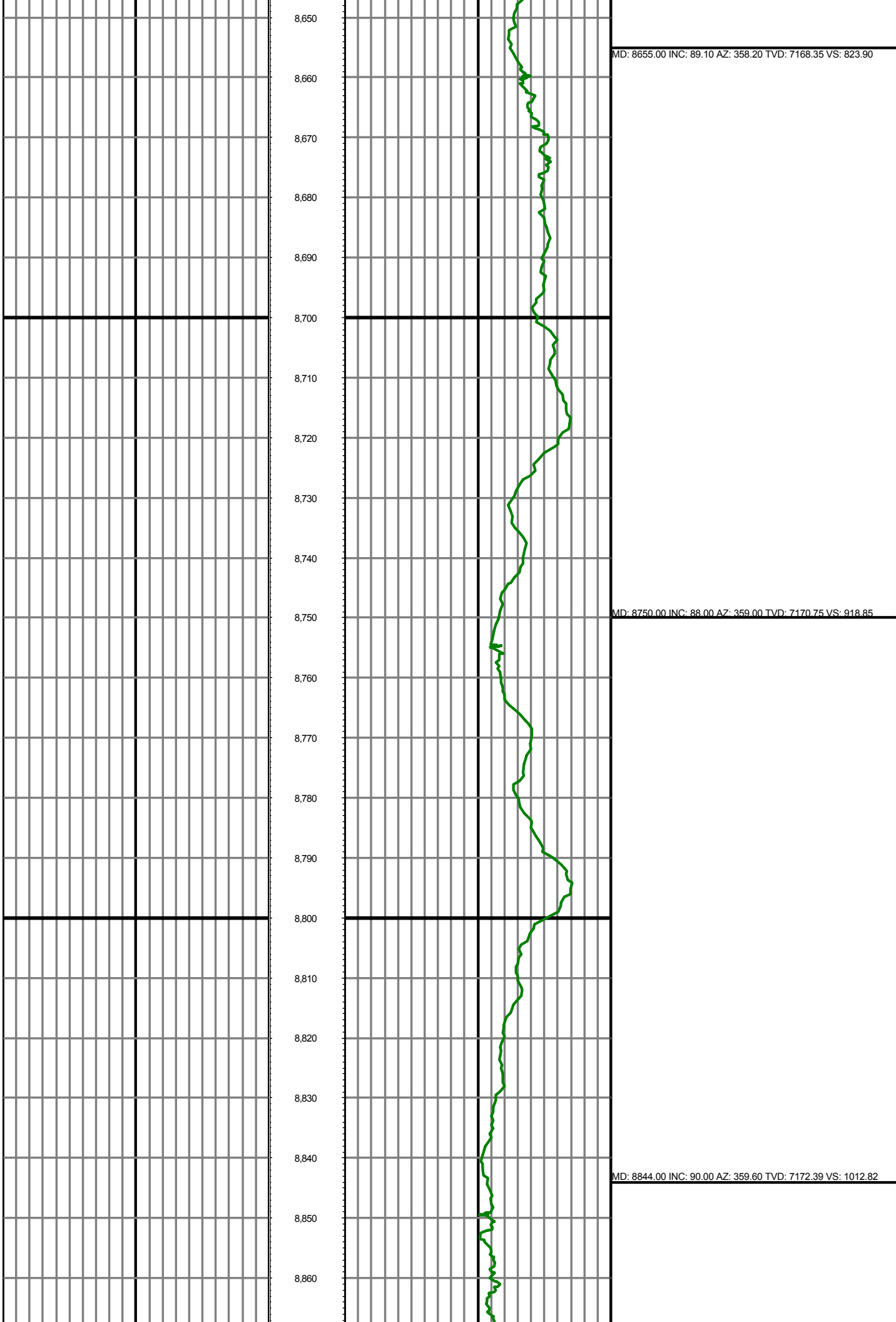


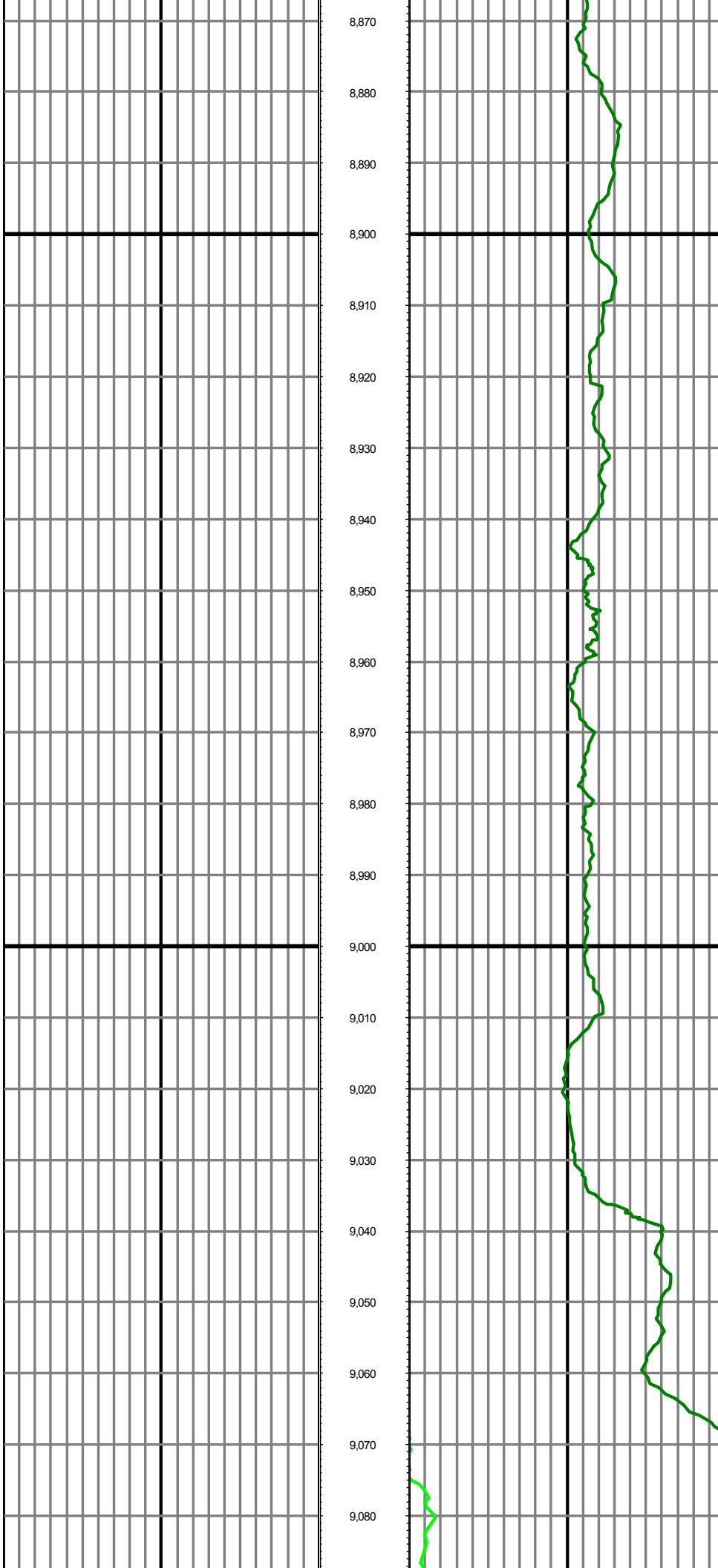






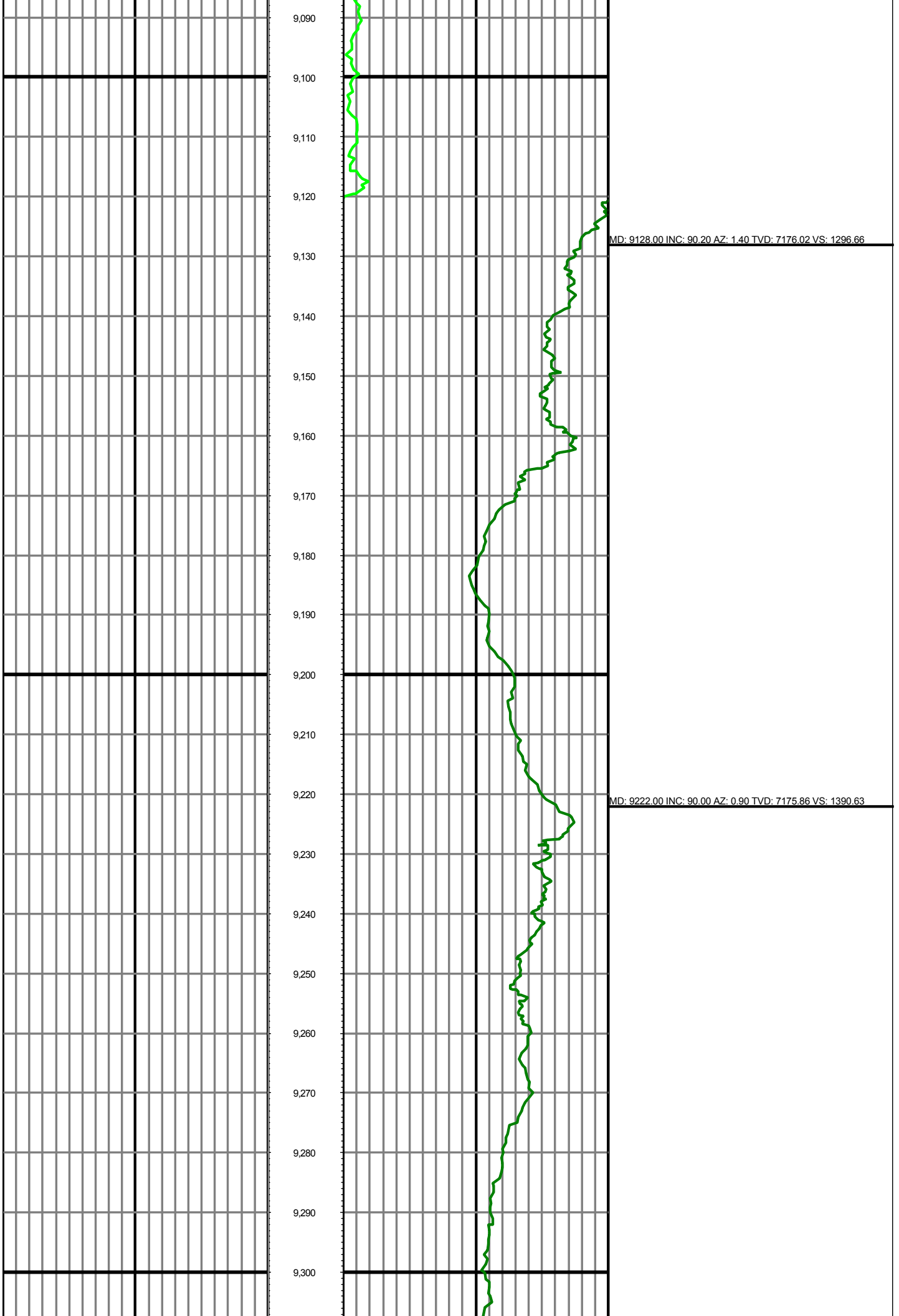


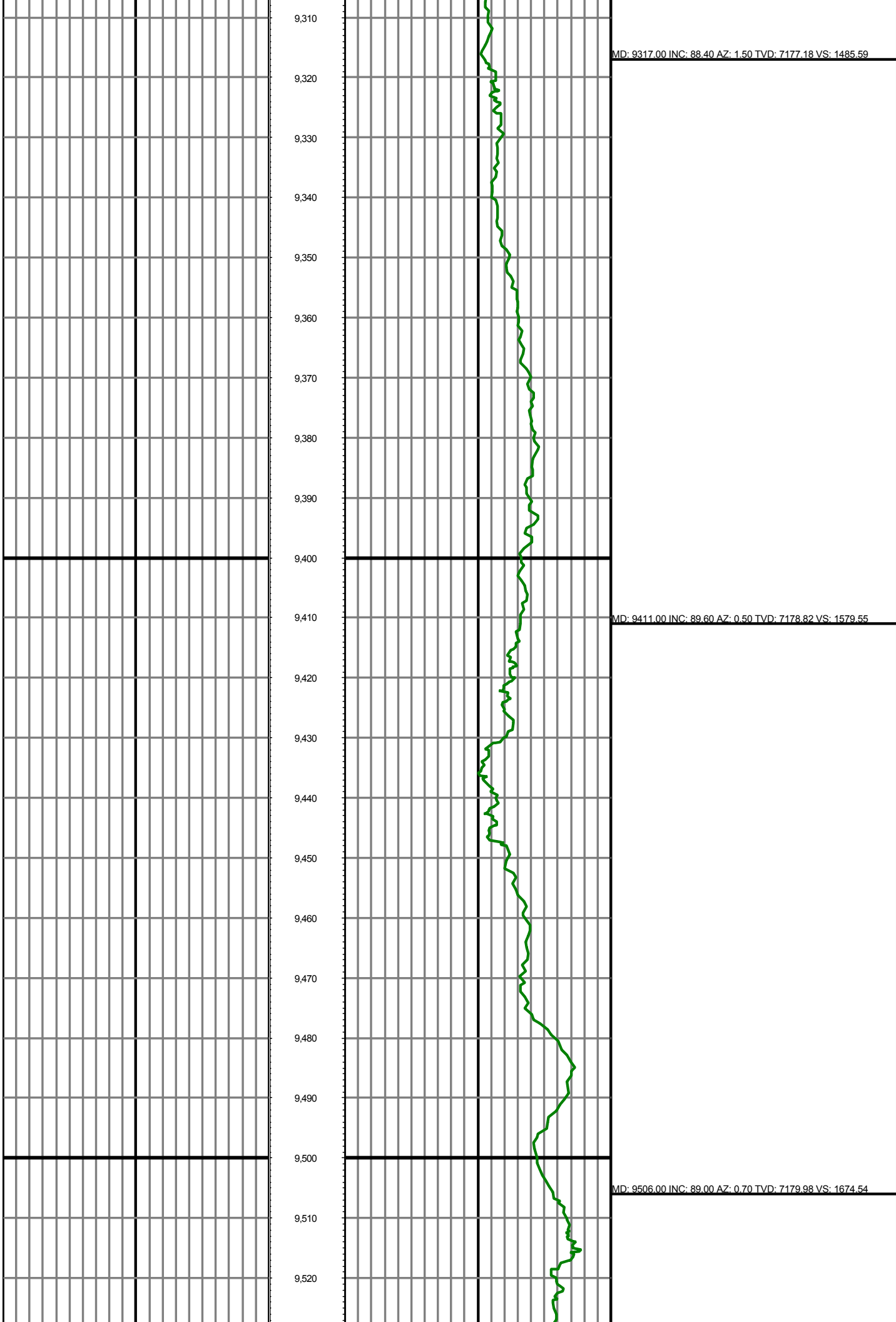


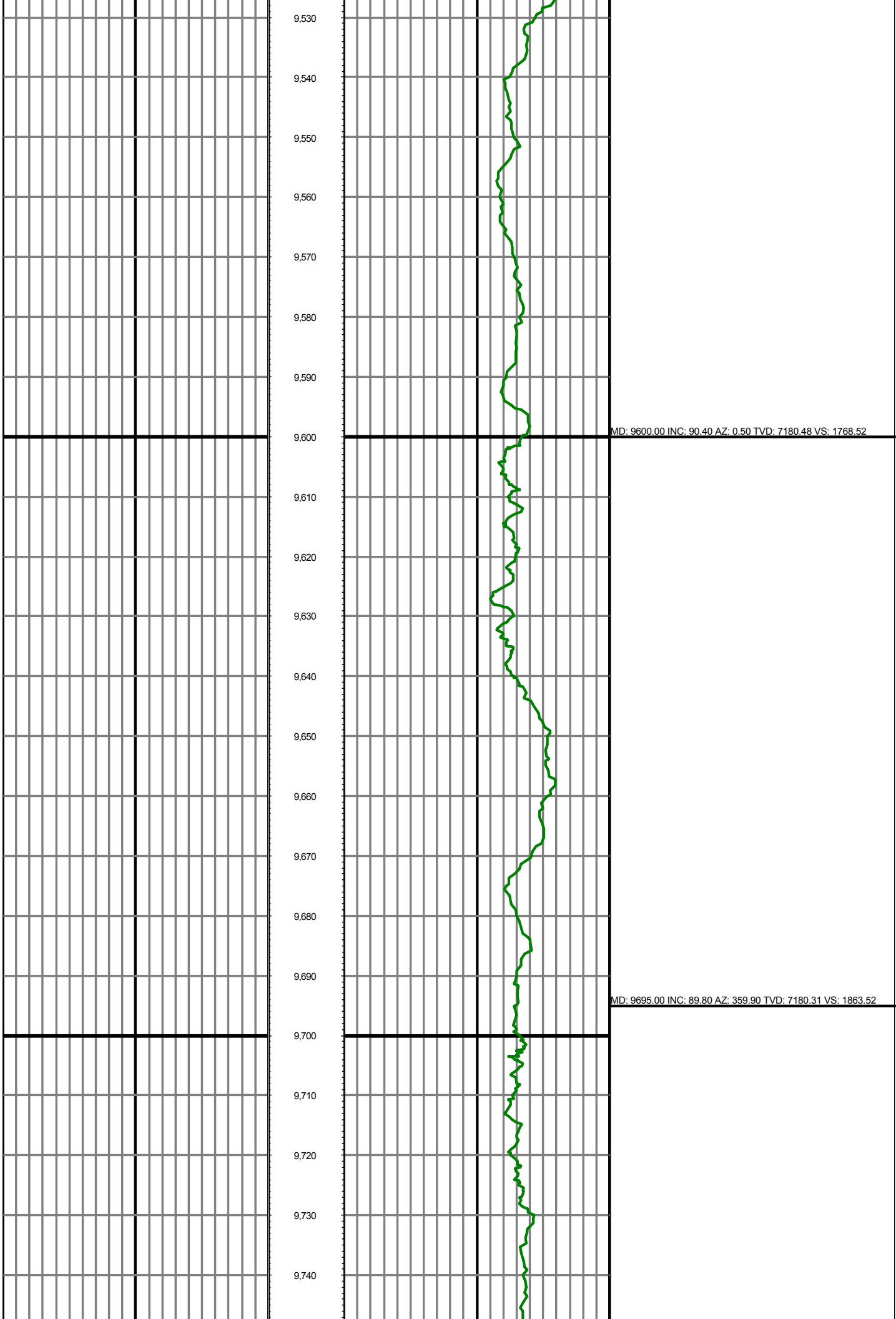


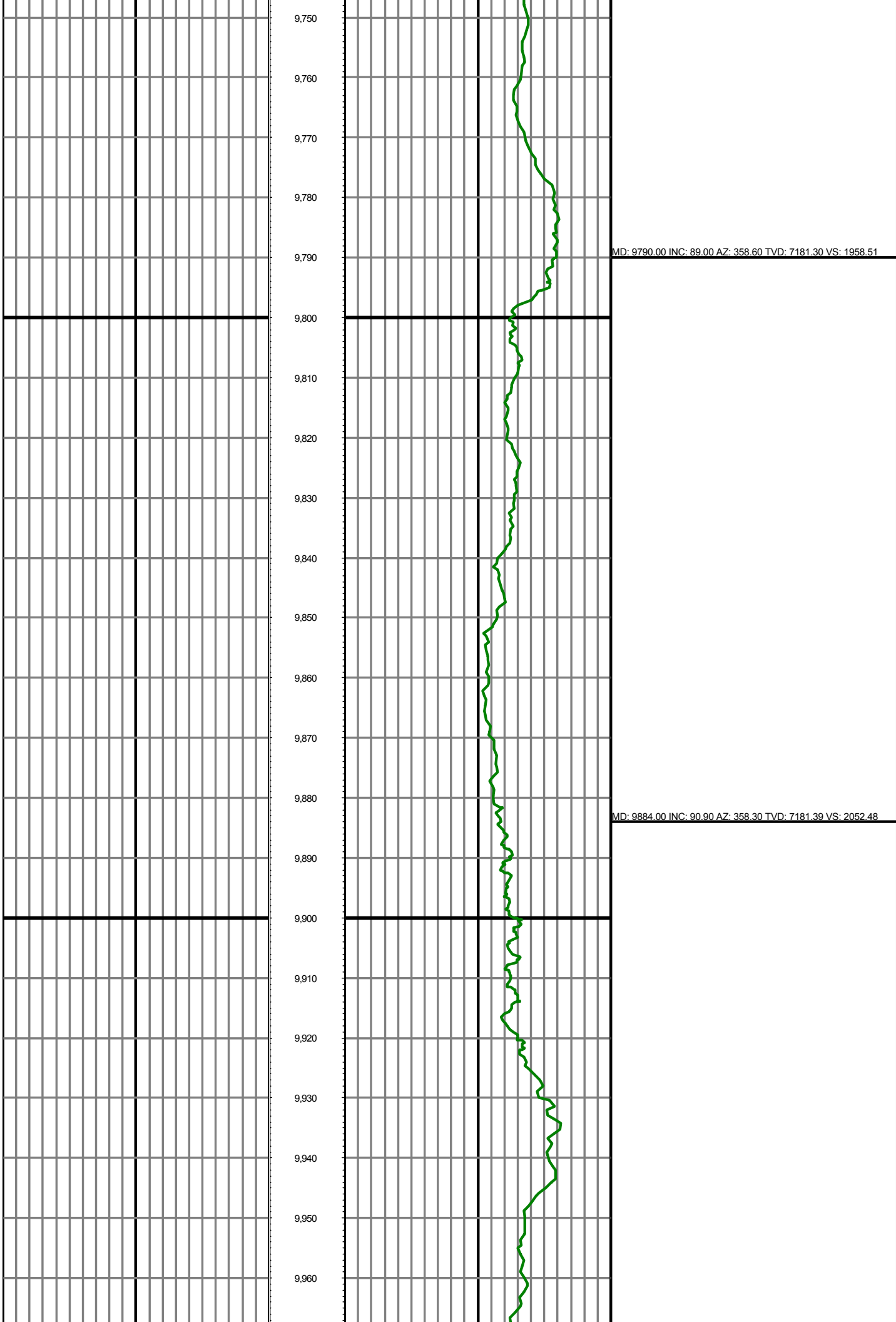
MD: 8939.00 INC: 89.20 AZ: 1.90 TVD: 7173.06 VS: 1107.80

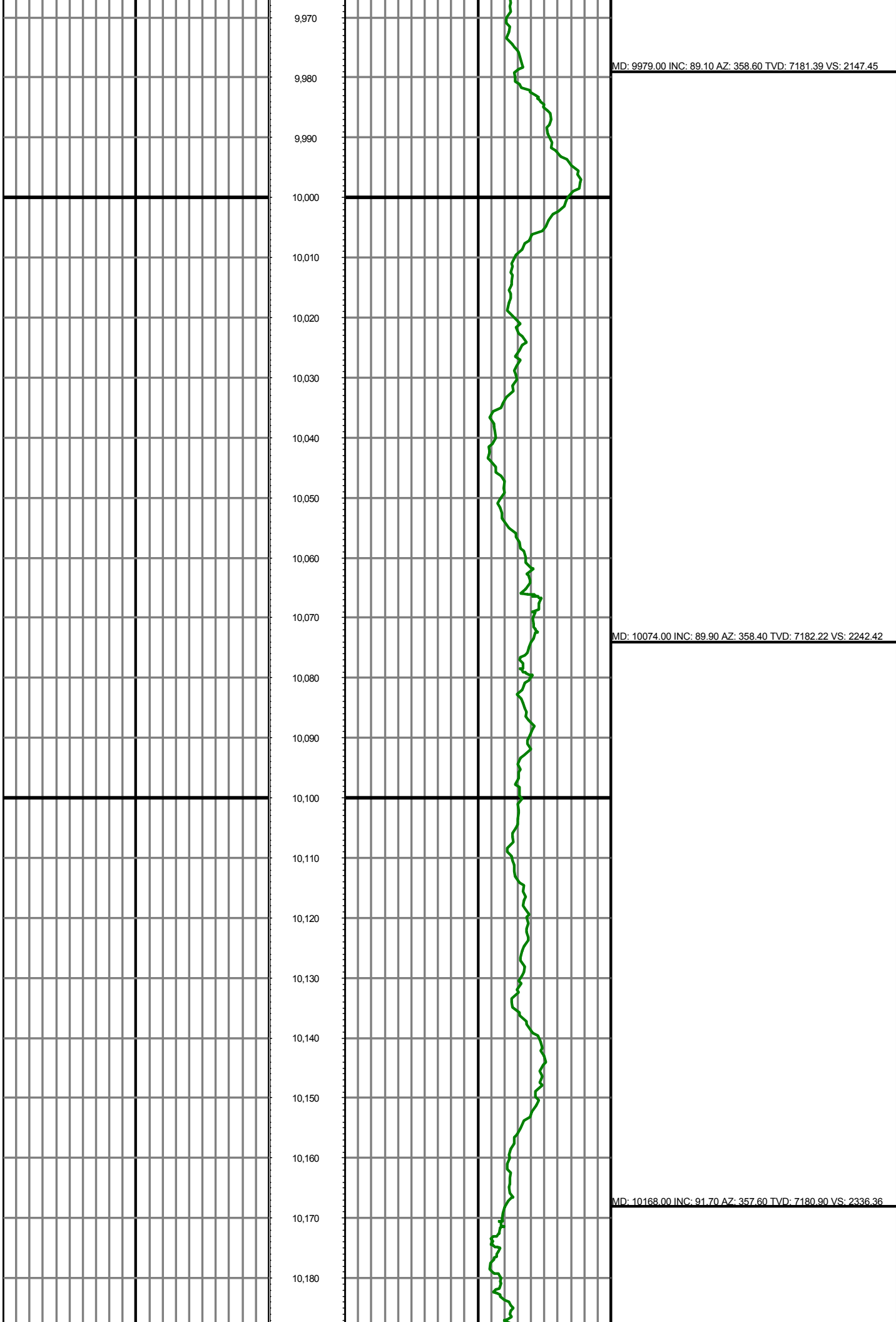
MD: 9033.00 INC: 88.50 AZ: 1.90 TVD: 7174.94 VS: 1201.72

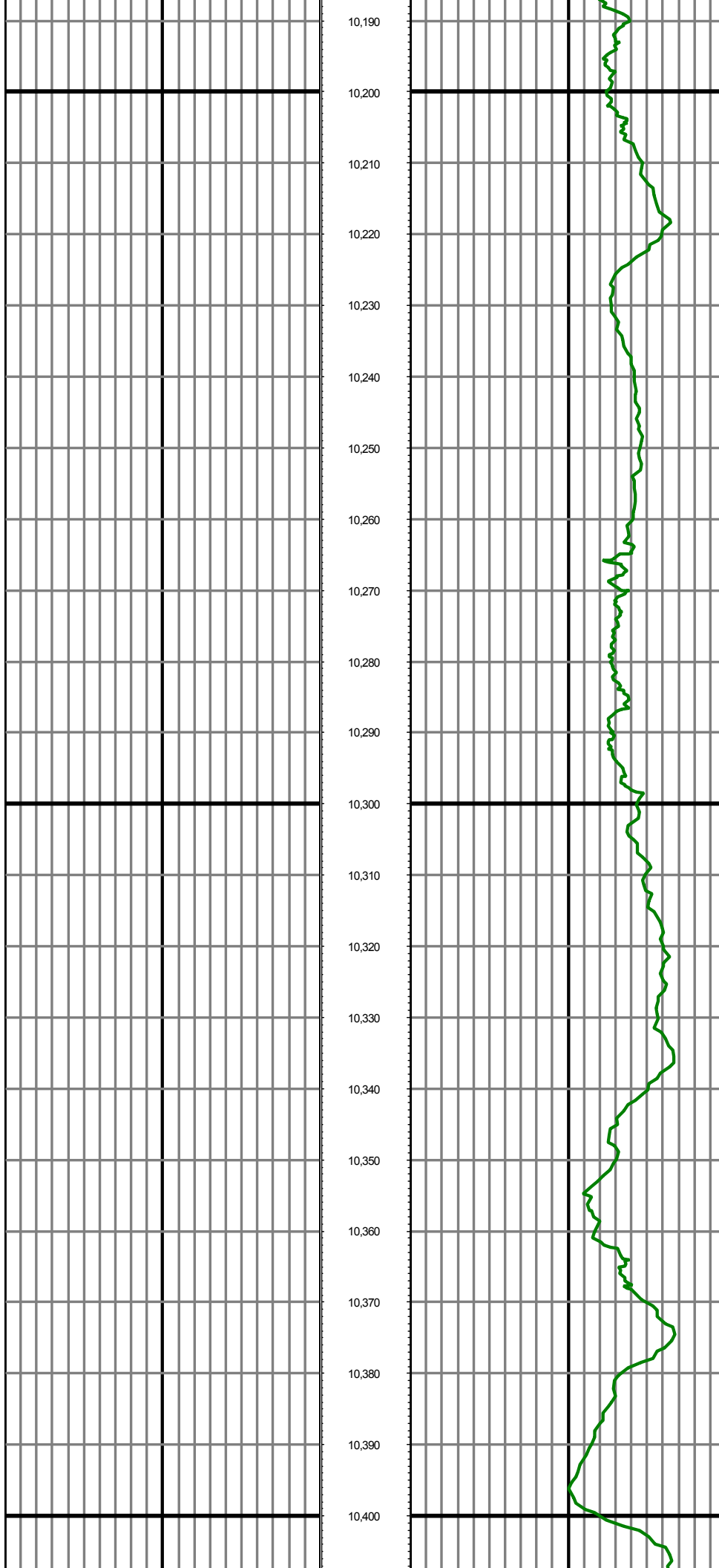












MD: 10263.00 INC: 89.70 AZ: 357.90 TVD: 7179.74 VS: 2431.28

MD: 10357.00 INC: 86.70 AZ: 359.90 TVD: 7182.69 VS: 2525.21

