

BONANZA CREEK ENERGY INC.

WELD COUNTY, COLORADO (NAD 83)

NE NE SEC. 32 T5N R61W 6th P.M.

STATE PRONGHORN 42-32-31MRLNB

ORIGINAL WELLBORE

04 September, 2015

Plan: PROPOSAL #1

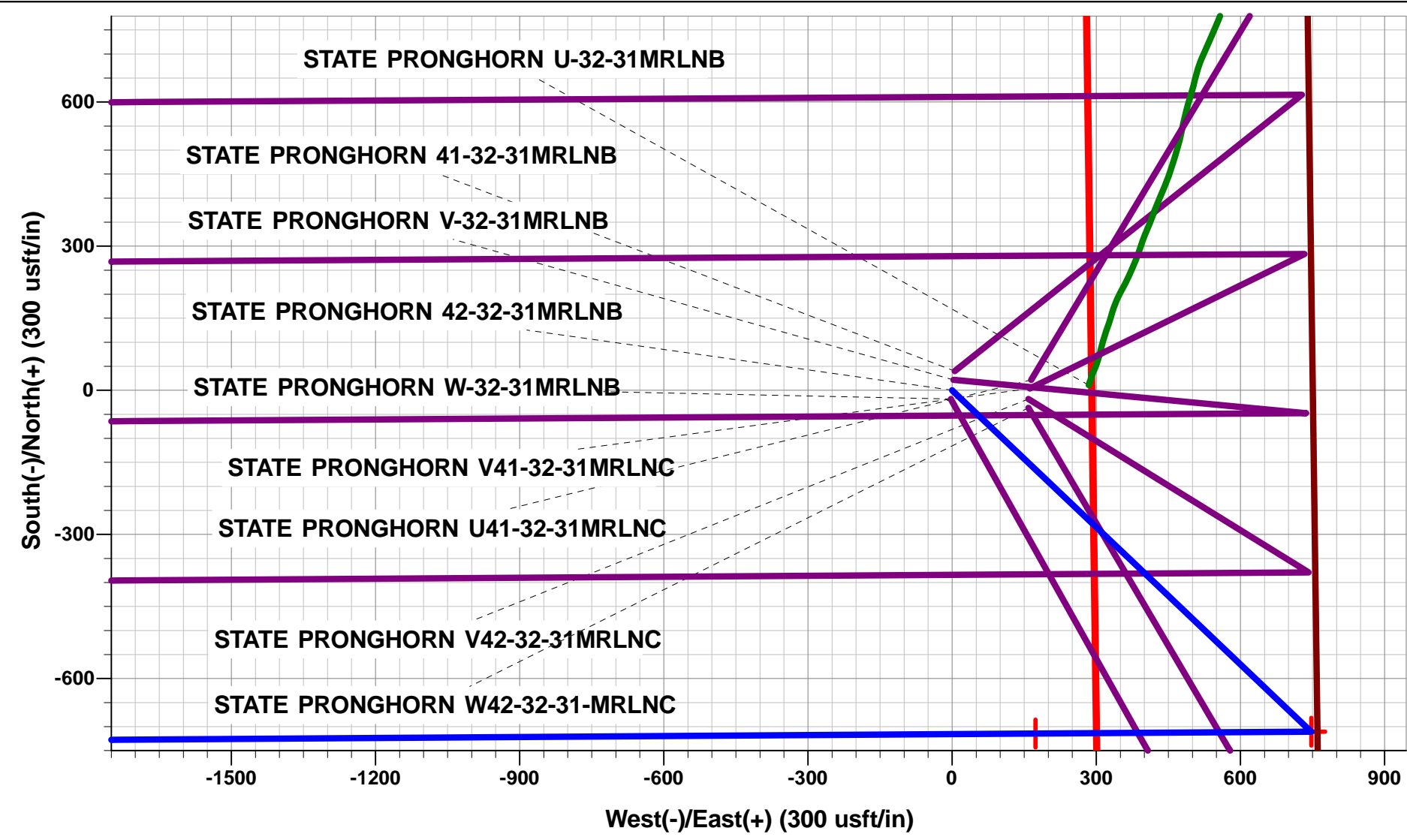




Project: WELD COUNTY, COLORADO (NAD 83)
Site: NE NE SEC. 32 T5N R61W 6th P.M.
Well: STATE PRONGHORN 42-32-31MRLNB
Wellbore: ORIGINAL WELLBORE
Design: PROPOSAL #1

ANNOTATIONS								
TVD	MD	Inc	Azi	+N/-S	+E/-W	VSect	Dep	Annotation
1200.0	1200.0	0.00	0.00	0.0	0.0	0.0	0.0	START NUDGE (2°/100ft BUR)
2024.5	2036.3	16.73	133.55	-83.5	87.8	-77.8	121.2	EOB TO 16.73° INC
4649.2	4777.0	16.73	133.55	-627.0	659.5	-584.1	910.0	END OF TANGENT
5473.7	5613.3	0.00	0.00	-710.5	747.3	-661.9	1031.1	EOD TO VERTICAL
5503.7	5643.3	0.00	0.00	-710.5	747.3	-661.9	1031.1	KOP (12°/100ft BUR)
5964.9	6268.3	75.00	269.61	-712.9	393.4	-310.0	1385.0	START OF TANGENT
5990.8	6368.3	75.00	269.61	-713.6	296.8	-214.0	1481.6	END OF TANGENT
6007.0	6493.3	90.00	269.61	-714.4	173.3	-91.1	1605.2	7" ICP *NEW* - STATE PRONGHORN 42-32-31MRLNB
6007.0	13330.2	90.00	269.62	-760.5	-6663.5	6706.7	8442.1	BHL - STATE PRONGHORN 42-32-31MRLNB

WELLBORE TARGET DETAILS (LAT/LONG)					
Name	TVD	+N/-S	+E/-W	Latitude	Longitude
KOP - STATE PRONGHORN 42-32-31MRLNB	5503.7	-710.5	747.3	40.359080	-104.223529
BHL - STATE PRONGHORN 42-32-31MRLNB	6007.0	-760.5	-6663.5	40.358940	-104.250120
7" ICP *NEW* - STATE PRONGHORN 42-32-31MRLNB	6007.0	-714.4	173.3	40.359069	-104.225588



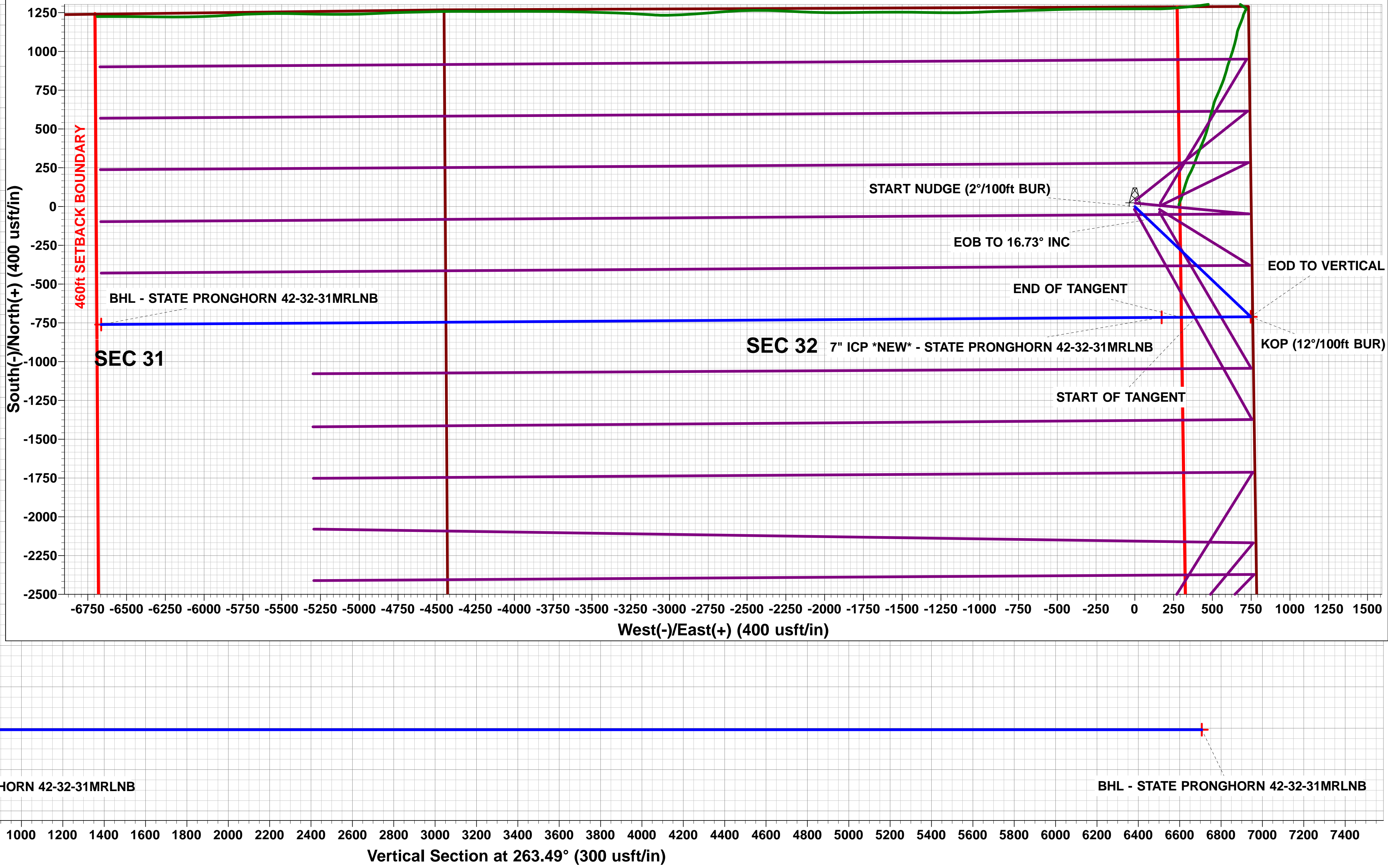
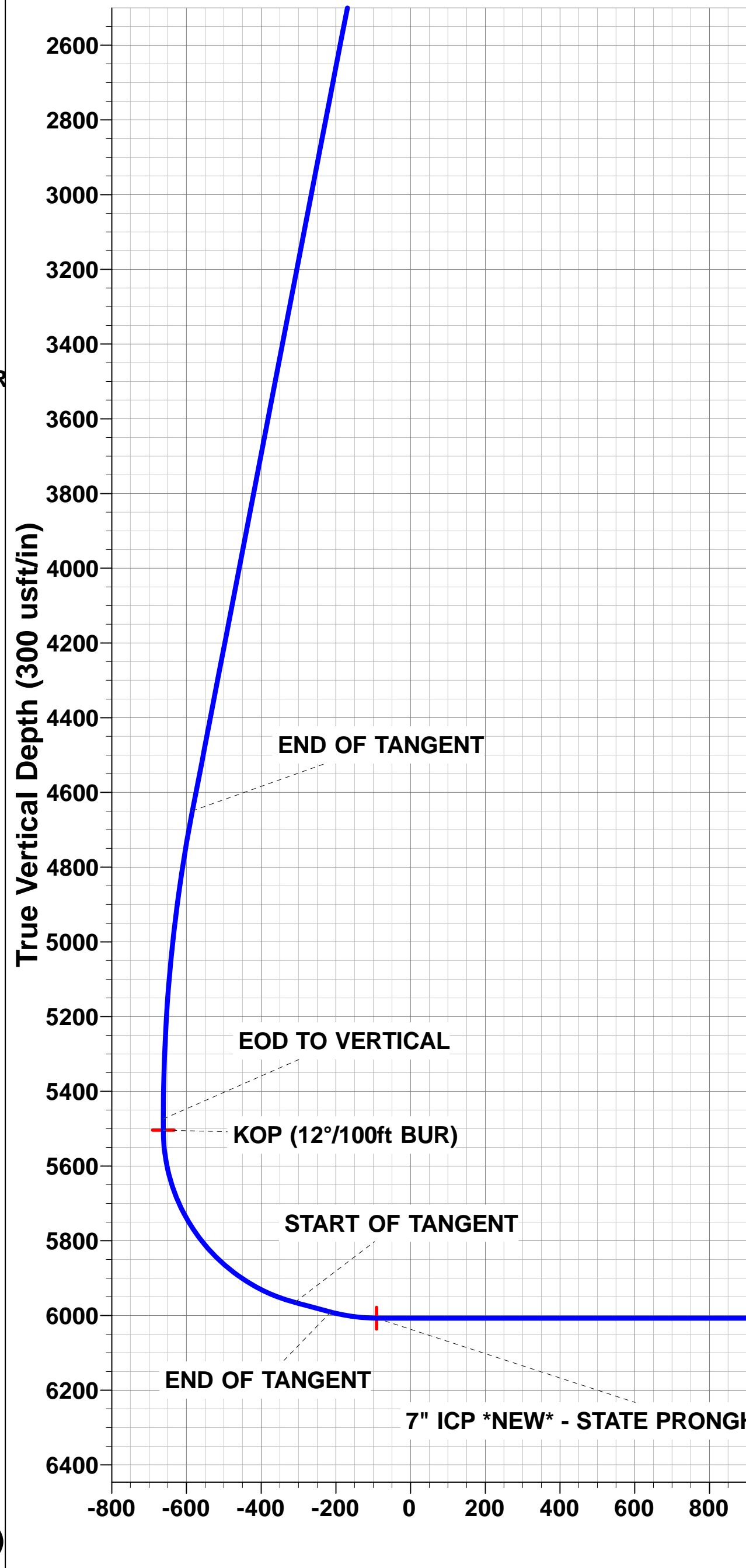
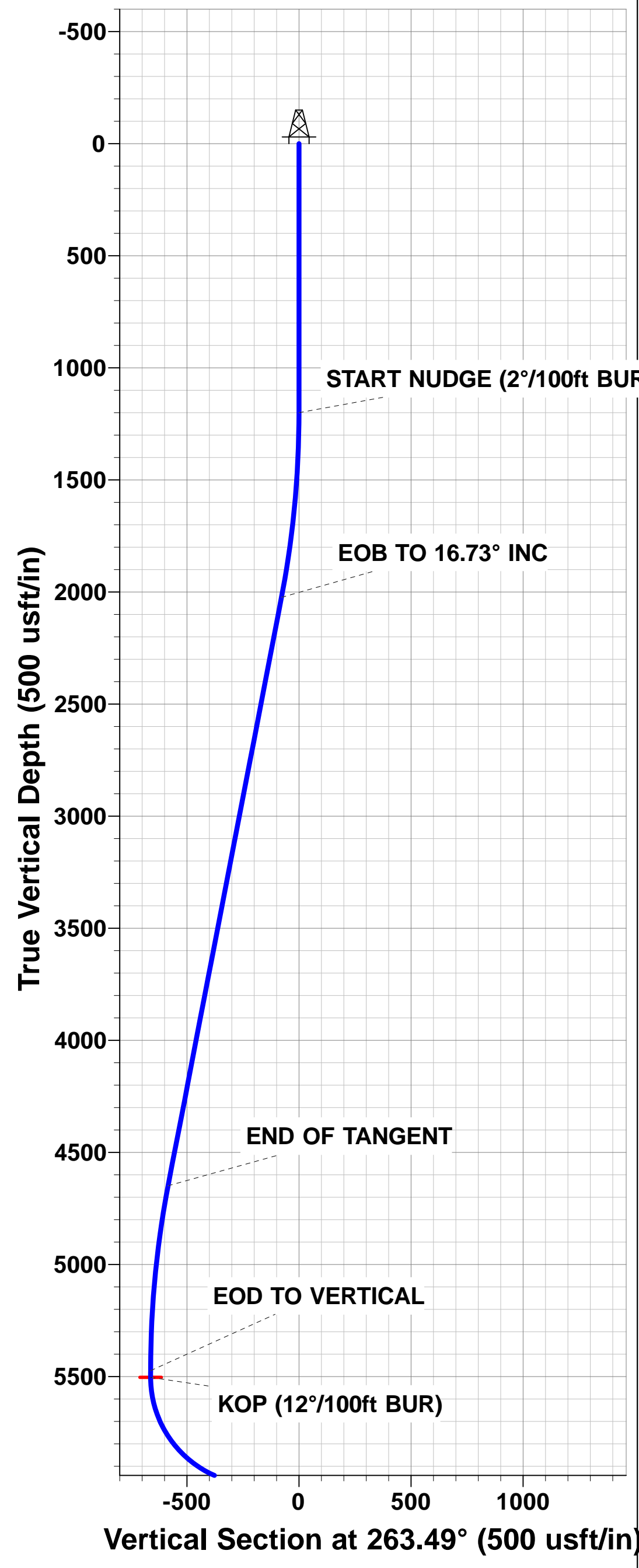
PROPOSED LOCAL COORDINATES:
SHL: 1286ft FNL & 750ft FEL of Sec 32
7" ICP *NEW*: 2002ft FSL & 589ft FEL of Sec 32
BHL: 2002ft FNL & 2221ft FEL of Sec 31

T

M

Azimuths to True North
Magnetic North: 8.11°

Magnetic Field
Strength: 52633.8snT
Dip Angle: 66.95°
Date: 04/09/2015
Model: IGRF2015



Database:	EDM 5000.1 Single User Db	Local Co-ordinate Reference:	Well STATE PRONGHORN 42-32-31MRLNB
Company:	BONANZA CREEK ENERGY INC.	TVD Reference:	KB-EST @ 4582.0usft (Original Well Elev)
Project:	WELD COUNTY, COLORADO (NAD 83)	MD Reference:	KB-EST @ 4582.0usft (Original Well Elev)
Site:	NE NE SEC. 32 T5N R61W 6th P.M.	North Reference:	True
Well:	STATE PRONGHORN 42-32-31MRLNB	Survey Calculation Method:	Minimum Curvature
Wellbore:	ORIGINAL WELLBORE		
Design:	PROPOSAL #1		

Project	WELD COUNTY, COLORADO (NAD 83)		
Map System:	US State Plane 1983	System Datum:	Mean Sea Level
Geo Datum:	North American Datum 1983		
Map Zone:	Colorado Northern Zone		Using geodetic scale factor

Site	NE NE SEC. 32 T5N R61W 6th P.M.		
Site Position:		Northing:	1,376,924.91 usft
From:	Lat/Long	Easting:	3,355,259.04 usft
Position Uncertainty:	0.0 usft	Slot Radius:	1.10000ft
		Latitude:	40.361050
		Longitude:	-104.225120
		Grid Convergence:	0.82 °

Well	STATE PRONGHORN 42-32-31MRLNB		
Well Position	+N/-S	-7.3 usft	Northing:
	+E/-W	-303.8 usft	Easting:
Position Uncertainty	0.0 usft	Wellhead Elevation:	usft
		Latitude:	40.361030
		Longitude:	-104.226210
		Ground Level:	4,565.0 usft

Wellbore	ORIGINAL WELLBORE				
Magnetics	Model Name	Sample Date	Declination (°)	Dip Angle (°)	Field Strength (nT)
	IGRF2015	04/09/2015	8.11	66.95	52,634

Design	PROPOSAL #1			
Audit Notes:				
Version:	Phase:	PROTOTYPE	Tie On Depth:	0.0
Vertical Section:	Depth From (TVD) (usft)	+N/-S (usft)	+E/-W (usft)	Direction (°)
	6,007.0	0.0	0.0	263.49

Plan Sections											
MD (usft)	Inc (°)	Azi (°)	Vertical Depth	SS (usft)	+N/-S (usft)	+E/-W (usft)	Dogleg Rate (°/100usf)	Build Rate (°/100usf)	Turn Rate (°/100usf)	TFO (°)	Target
0.0	0.00	0.00	0.0	-4,582.0	0.0	0.0	0.00	0.00	0.00	0.00	
1,200.0	0.00	0.00	1,200.0	-3,382.0	0.0	0.0	0.00	0.00	0.00	0.00	
2,036.3	16.73	133.55	2,024.5	-2,557.5	-83.5	87.8	2.00	2.00	0.00	133.55	
4,777.0	16.73	133.55	4,649.2	67.2	-627.0	659.5	0.00	0.00	0.00	0.00	
5,613.3	0.00	0.00	5,473.7	891.7	-710.5	747.3	2.00	-2.00	0.00	180.00	
5,643.3	0.00	0.00	5,503.7	921.7	-710.5	747.3	0.00	0.00	0.00	0.00	KOP - STATE PRO
6,268.3	75.00	269.61	5,964.9	1,382.9	-712.9	393.4	12.00	12.00	0.00	269.61	
6,368.3	75.00	269.61	5,990.8	1,408.8	-713.6	296.8	0.00	0.00	0.00	0.00	
6,493.3	90.00	269.61	6,007.0	1,425.0	-714.4	173.3	12.00	12.00	0.00	0.00	
13,330.2	90.00	269.62	6,007.0	1,425.0	-760.5	-6,663.5	0.00	0.00	0.00	84.01	BHL - STATE PROI

Database:	EDM 5000.1 Single User Db	Local Co-ordinate Reference:	Well STATE PRONGHORN 42-32-31MRLNB
Company:	BONANZA CREEK ENERGY INC.	TVD Reference:	KB-EST @ 4582.0usft (Original Well Elev)
Project:	WELD COUNTY, COLORADO (NAD 83)	MD Reference:	KB-EST @ 4582.0usft (Original Well Elev)
Site:	NE NE SEC. 32 T5N R61W 6th P.M.	North Reference:	True
Well:	STATE PRONGHORN 42-32-31MRLNB	Survey Calculation Method:	Minimum Curvature
Wellbore:	ORIGINAL WELLBORE		
Design:	PROPOSAL #1		

Planned Survey

MD (usft)	Inc (°)	Azi (°)	TVD (usft)	SS (usft)	+N/-S (usft)	+E/-W (usft)	Vertical Section (usft)	Dogleg Rate (°/100usft)	Build Rate (°/100usft)	Turn Rate (°/100usft)
0.0	0.00	0.00	0.0	4,582.00	0.0	0.0	0.0	0.00	0.00	0.00
100.0	0.00	0.00	100.0	4,482.00	0.0	0.0	0.0	0.00	0.00	0.00
200.0	0.00	0.00	200.0	4,382.00	0.0	0.0	0.0	0.00	0.00	0.00
300.0	0.00	0.00	300.0	4,282.00	0.0	0.0	0.0	0.00	0.00	0.00
400.0	0.00	0.00	400.0	4,182.00	0.0	0.0	0.0	0.00	0.00	0.00
500.0	0.00	0.00	500.0	4,082.00	0.0	0.0	0.0	0.00	0.00	0.00
600.0	0.00	0.00	600.0	3,982.00	0.0	0.0	0.0	0.00	0.00	0.00
700.0	0.00	0.00	700.0	3,882.00	0.0	0.0	0.0	0.00	0.00	0.00
800.0	0.00	0.00	800.0	3,782.00	0.0	0.0	0.0	0.00	0.00	0.00
900.0	0.00	0.00	900.0	3,682.00	0.0	0.0	0.0	0.00	0.00	0.00
1,000.0	0.00	0.00	1,000.0	3,582.00	0.0	0.0	0.0	0.00	0.00	0.00
1,100.0	0.00	0.00	1,100.0	3,482.00	0.0	0.0	0.0	0.00	0.00	0.00
START NUDGE (2°/100ft BUR)										
1,200.0	0.00	0.00	1,200.0	3,382.00	0.0	0.0	0.0	0.00	0.00	0.00
1,300.0	2.00	133.55	1,300.0	3,282.02	-1.2	1.3	-1.1	2.00	2.00	0.00
1,400.0	4.00	133.55	1,399.8	3,182.16	-4.8	5.1	-4.5	2.00	2.00	0.00
1,500.0	6.00	133.55	1,499.5	3,082.55	-10.8	11.4	-10.1	2.00	2.00	0.00
1,600.0	8.00	133.55	1,598.7	2,983.30	-19.2	20.2	-17.9	2.00	2.00	0.00
1,700.0	10.00	133.55	1,697.5	2,884.53	-30.0	31.5	-27.9	2.00	2.00	0.00
1,800.0	12.00	133.55	1,795.6	2,786.38	-43.1	45.4	-40.2	2.00	2.00	0.00
1,900.0	14.00	133.55	1,893.1	2,688.94	-58.6	61.7	-54.6	2.00	2.00	0.00
2,000.0	16.00	133.55	1,989.6	2,592.36	-76.5	80.4	-71.2	2.00	2.00	0.00
EOB TO 16.73° INC										
2,036.3	16.73	133.55	2,024.5	2,557.55	-83.5	87.8	-77.8	2.00	2.00	0.00
2,100.0	16.73	133.55	2,085.5	2,496.52	-96.1	101.1	-89.6	0.00	0.00	0.00
2,200.0	16.73	133.55	2,181.2	2,400.75	-116.0	122.0	-108.0	0.00	0.00	0.00
2,300.0	16.73	133.55	2,277.0	2,304.98	-135.8	142.8	-126.5	0.00	0.00	0.00
2,400.0	16.73	133.55	2,372.8	2,209.21	-155.6	163.7	-145.0	0.00	0.00	0.00
2,500.0	16.73	133.55	2,468.6	2,113.44	-175.5	184.6	-163.5	0.00	0.00	0.00
2,600.0	16.73	133.55	2,564.3	2,017.68	-195.3	205.4	-181.9	0.00	0.00	0.00
2,700.0	16.73	133.55	2,660.1	1,921.91	-215.1	226.3	-200.4	0.00	0.00	0.00
2,800.0	16.73	133.55	2,755.9	1,826.14	-235.0	247.1	-218.9	0.00	0.00	0.00
2,900.0	16.73	133.55	2,851.6	1,730.37	-254.8	268.0	-237.4	0.00	0.00	0.00
3,000.0	16.73	133.55	2,947.4	1,634.60	-274.6	288.8	-255.8	0.00	0.00	0.00
3,100.0	16.73	133.55	3,043.2	1,538.83	-294.4	309.7	-274.3	0.00	0.00	0.00
3,200.0	16.73	133.55	3,138.9	1,443.06	-314.3	330.5	-292.8	0.00	0.00	0.00
3,300.0	16.73	133.55	3,234.7	1,347.29	-334.1	351.4	-311.3	0.00	0.00	0.00
3,400.0	16.73	133.55	3,330.5	1,251.52	-353.9	372.3	-329.7	0.00	0.00	0.00
3,500.0	16.73	133.55	3,426.2	1,155.75	-373.8	393.1	-348.2	0.00	0.00	0.00
3,600.0	16.73	133.55	3,522.0	1,059.98	-393.6	414.0	-366.7	0.00	0.00	0.00
3,700.0	16.73	133.55	3,617.8	964.21	-413.4	434.8	-385.1	0.00	0.00	0.00
3,800.0	16.73	133.55	3,713.6	868.44	-433.2	455.7	-403.6	0.00	0.00	0.00
3,900.0	16.73	133.55	3,809.3	772.67	-453.1	476.5	-422.1	0.00	0.00	0.00
4,000.0	16.73	133.55	3,905.1	676.90	-472.9	497.4	-440.6	0.00	0.00	0.00
4,100.0	16.73	133.55	4,000.9	581.13	-492.7	518.3	-459.0	0.00	0.00	0.00
4,200.0	16.73	133.55	4,096.6	485.36	-512.6	539.1	-477.5	0.00	0.00	0.00
4,300.0	16.73	133.55	4,192.4	389.60	-532.4	560.0	-496.0	0.00	0.00	0.00
4,400.0	16.73	133.55	4,288.2	293.83	-552.2	580.8	-514.5	0.00	0.00	0.00
4,500.0	16.73	133.55	4,383.9	198.06	-572.1	601.7	-532.9	0.00	0.00	0.00
4,600.0	16.73	133.55	4,479.7	102.29	-591.9	622.5	-551.4	0.00	0.00	0.00
4,700.0	16.73	133.55	4,575.5	6.52	-611.7	643.4	-569.9	0.00	0.00	0.00
END OF TANGENT										
4,777.0	16.73	133.55	4,649.2	-67.25	-627.0	659.5	-584.1	0.00	0.00	0.00

Database:	EDM 5000.1 Single User Db	Local Co-ordinate Reference:	Well STATE PRONGHORN 42-32-31MRLNB
Company:	BONANZA CREEK ENERGY INC.	TVD Reference:	KB-EST @ 4582.0usft (Original Well Elev)
Project:	WELD COUNTY, COLORADO (NAD 83)	MD Reference:	KB-EST @ 4582.0usft (Original Well Elev)
Site:	NE NE SEC. 32 T5N R61W 6th P.M.	North Reference:	True
Well:	STATE PRONGHORN 42-32-31MRLNB	Survey Calculation Method:	Minimum Curvature
Wellbore:	ORIGINAL WELLBORE		
Design:	PROPOSAL #1		

Planned Survey

MD (usft)	Inc (°)	Azi (°)	TVD (usft)	SS (usft)	+N/-S (usft)	+E/-W (usft)	Vertical Section (usft)	Dogleg Rate (°/100usft)	Build Rate (°/100usft)	Turn Rate (°/100usft)
4,800.0	16.27	133.55	4,671.3	-89.28	-631.5	664.2	-588.3	2.00	-2.00	0.00
4,900.0	14.27	133.55	4,767.7	-185.74	-649.6	683.3	-605.2	2.00	-2.00	0.00
5,000.0	12.27	133.55	4,865.1	-283.07	-665.4	699.9	-619.9	2.00	-2.00	0.00
5,100.0	10.27	133.55	4,963.1	-381.14	-678.9	714.1	-632.5	2.00	-2.00	0.00
5,200.0	8.27	133.55	5,061.8	-479.83	-690.0	725.7	-642.8	2.00	-2.00	0.00
5,300.0	6.27	133.55	5,161.0	-579.02	-698.7	734.9	-650.9	2.00	-2.00	0.00
5,400.0	4.27	133.55	5,260.6	-678.59	-705.0	741.5	-656.8	2.00	-2.00	0.00
5,500.0	2.27	133.55	5,360.4	-778.43	-709.0	745.7	-660.5	2.00	-2.00	0.00
5,600.0	0.27	133.55	5,460.4	-878.40	-710.5	747.3	-661.9	2.00	-2.00	0.00
EOD TO VERTICAL										
5,613.3	0.00	0.00	5,473.7	-891.70	-710.5	747.3	-661.9	2.00	-2.00	0.00
KOP (12°/100ft BUR)										
5,643.3	0.00	0.00	5,503.7	-921.70	-710.5	747.3	-661.9	0.00	0.00	0.00
5,700.0	6.80	269.61	5,560.3	-978.26	-710.5	743.9	-658.6	12.00	12.00	0.00
5,800.0	18.80	269.61	5,657.6	-1,075.60	-710.7	721.8	-636.6	12.00	12.00	0.00
5,900.0	30.80	269.61	5,748.2	-1,166.21	-711.0	679.9	-594.9	12.00	12.00	0.00
6,000.0	42.80	269.61	5,828.1	-1,246.13	-711.4	620.1	-535.5	12.00	12.00	0.00
6,100.0	54.80	269.61	5,893.9	-1,311.88	-711.9	545.0	-460.8	12.00	12.00	0.00
6,200.0	66.80	269.61	5,942.6	-1,360.57	-712.5	457.9	-374.2	12.00	12.00	0.00
START OF TANGENT										
6,268.3	75.00	269.61	5,964.9	-1,382.90	-712.9	393.4	-310.0	12.00	12.00	0.00
6,300.0	75.00	269.61	5,973.1	-1,391.10	-713.1	362.8	-279.6	0.00	0.00	0.00
END OF TANGENT										
6,368.3	75.00	269.61	5,990.8	-1,408.78	-713.6	296.8	-214.0	0.00	0.00	0.00
6,400.0	78.80	269.61	5,998.0	-1,415.96	-713.8	266.0	-183.3	12.00	12.00	0.00
7" ICP *NEW* - STATE PRONGHORN 42-32-31MRLNB										
6,493.3	90.00	269.61	6,007.0	-1,425.05	-714.4	173.3	-91.1	12.00	12.00	0.00
6,500.0	90.00	269.61	6,007.0	-1,425.05	-714.5	166.6	-84.5	0.00	0.00	0.00
6,600.0	90.00	269.61	6,007.0	-1,425.05	-715.1	66.6	15.0	0.00	0.00	0.00
6,700.0	90.00	269.61	6,007.0	-1,425.05	-715.8	-33.4	114.4	0.00	0.00	0.00
6,800.0	90.00	269.61	6,007.0	-1,425.05	-716.5	-133.4	213.8	0.00	0.00	0.00
6,900.0	90.00	269.61	6,007.0	-1,425.05	-717.2	-233.4	313.2	0.00	0.00	0.00
7,000.0	90.00	269.61	6,007.0	-1,425.05	-717.9	-333.4	412.7	0.00	0.00	0.00
7,100.0	90.00	269.61	6,007.0	-1,425.05	-718.5	-433.4	512.1	0.00	0.00	0.00
7,200.0	90.00	269.61	6,007.0	-1,425.05	-719.2	-533.4	611.5	0.00	0.00	0.00
7,300.0	90.00	269.61	6,007.0	-1,425.05	-719.9	-633.4	711.0	0.00	0.00	0.00
7,400.0	90.00	269.61	6,007.0	-1,425.05	-720.6	-733.4	810.4	0.00	0.00	0.00
7,500.0	90.00	269.61	6,007.0	-1,425.05	-721.3	-833.4	909.8	0.00	0.00	0.00
7,600.0	90.00	269.61	6,007.0	-1,425.05	-721.9	-933.4	1,009.3	0.00	0.00	0.00
7,700.0	90.00	269.61	6,007.0	-1,425.05	-722.6	-1,033.4	1,108.7	0.00	0.00	0.00
7,800.0	90.00	269.61	6,007.0	-1,425.05	-723.3	-1,133.4	1,208.1	0.00	0.00	0.00
7,900.0	90.00	269.61	6,007.0	-1,425.04	-724.0	-1,233.4	1,307.5	0.00	0.00	0.00
8,000.0	90.00	269.61	6,007.0	-1,425.04	-724.6	-1,333.4	1,407.0	0.00	0.00	0.00
8,100.0	90.00	269.61	6,007.0	-1,425.04	-725.3	-1,433.4	1,506.4	0.00	0.00	0.00
8,200.0	90.00	269.61	6,007.0	-1,425.04	-726.0	-1,533.4	1,605.8	0.00	0.00	0.00
8,300.0	90.00	269.61	6,007.0	-1,425.04	-726.7	-1,633.4	1,705.3	0.00	0.00	0.00
8,400.0	90.00	269.61	6,007.0	-1,425.04	-727.4	-1,733.4	1,804.7	0.00	0.00	0.00
8,500.0	90.00	269.61	6,007.0	-1,425.04	-728.0	-1,833.4	1,904.1	0.00	0.00	0.00
8,600.0	90.00	269.61	6,007.0	-1,425.04	-728.7	-1,933.4	2,003.6	0.00	0.00	0.00
8,700.0	90.00	269.61	6,007.0	-1,425.04	-729.4	-2,033.4	2,103.0	0.00	0.00	0.00
8,800.0	90.00	269.61	6,007.0	-1,425.04	-730.1	-2,133.4	2,202.4	0.00	0.00	0.00
8,900.0	90.00	269.61	6,007.0	-1,425.04	-730.7	-2,233.4	2,301.8	0.00	0.00	0.00
9,000.0	90.00	269.61	6,007.0	-1,425.04	-731.4	-2,333.4	2,401.3	0.00	0.00	0.00
9,100.0	90.00	269.61	6,007.0	-1,425.04	-732.1	-2,433.4	2,500.7	0.00	0.00	0.00

Database:	EDM 5000.1 Single User Db	Local Co-ordinate Reference:	Well STATE PRONGHORN 42-32-31MRLNB
Company:	BONANZA CREEK ENERGY INC.	TVD Reference:	KB-EST @ 4582.0usft (Original Well Elev)
Project:	WELD COUNTY, COLORADO (NAD 83)	MD Reference:	KB-EST @ 4582.0usft (Original Well Elev)
Site:	NE NE SEC. 32 T5N R61W 6th P.M.	North Reference:	True
Well:	STATE PRONGHORN 42-32-31MRLNB	Survey Calculation Method:	Minimum Curvature
Wellbore:	ORIGINAL WELLBORE		
Design:	PROPOSAL #1		

Planned Survey

MD (usft)	Inc (°)	Azi (°)	TVD (usft)	SS (usft)	+N/-S (usft)	+E/-W (usft)	Vertical Section (usft)	Dogleg Rate (°/100usft)	Build Rate (°/100usft)	Turn Rate (°/100usft)
9,200.0	90.00	269.61	6,007.0	-1,425.04	-732.8	-2,533.4	2,600.1	0.00	0.00	0.00
9,300.0	90.00	269.61	6,007.0	-1,425.04	-733.4	-2,633.4	2,699.6	0.00	0.00	0.00
9,400.0	90.00	269.61	6,007.0	-1,425.04	-734.1	-2,733.4	2,799.0	0.00	0.00	0.00
9,500.0	90.00	269.61	6,007.0	-1,425.04	-734.8	-2,833.4	2,898.4	0.00	0.00	0.00
9,600.0	90.00	269.61	6,007.0	-1,425.04	-735.5	-2,933.4	2,997.8	0.00	0.00	0.00
9,700.0	90.00	269.61	6,007.0	-1,425.04	-736.1	-3,033.4	3,097.3	0.00	0.00	0.00
9,800.0	90.00	269.61	6,007.0	-1,425.04	-736.8	-3,133.4	3,196.7	0.00	0.00	0.00
9,900.0	90.00	269.61	6,007.0	-1,425.04	-737.5	-3,233.4	3,296.1	0.00	0.00	0.00
10,000.0	90.00	269.61	6,007.0	-1,425.03	-738.2	-3,333.4	3,395.6	0.00	0.00	0.00
10,100.0	90.00	269.61	6,007.0	-1,425.03	-738.8	-3,433.4	3,495.0	0.00	0.00	0.00
10,200.0	90.00	269.61	6,007.0	-1,425.03	-739.5	-3,533.4	3,594.4	0.00	0.00	0.00
10,300.0	90.00	269.61	6,007.0	-1,425.03	-740.2	-3,633.4	3,693.9	0.00	0.00	0.00
10,400.0	90.00	269.61	6,007.0	-1,425.03	-740.9	-3,733.4	3,793.3	0.00	0.00	0.00
10,500.0	90.00	269.61	6,007.0	-1,425.03	-741.5	-3,833.3	3,892.7	0.00	0.00	0.00
10,600.0	90.00	269.61	6,007.0	-1,425.03	-742.2	-3,933.3	3,992.1	0.00	0.00	0.00
10,700.0	90.00	269.61	6,007.0	-1,425.03	-742.9	-4,033.3	4,091.6	0.00	0.00	0.00
10,800.0	90.00	269.61	6,007.0	-1,425.03	-743.5	-4,133.3	4,191.0	0.00	0.00	0.00
10,900.0	90.00	269.61	6,007.0	-1,425.03	-744.2	-4,233.3	4,290.4	0.00	0.00	0.00
11,000.0	90.00	269.61	6,007.0	-1,425.03	-744.9	-4,333.3	4,389.9	0.00	0.00	0.00
11,100.0	90.00	269.62	6,007.0	-1,425.03	-745.6	-4,433.3	4,489.3	0.00	0.00	0.00
11,200.0	90.00	269.62	6,007.0	-1,425.02	-746.2	-4,533.3	4,588.7	0.00	0.00	0.00
11,300.0	90.00	269.62	6,007.0	-1,425.02	-746.9	-4,633.3	4,688.1	0.00	0.00	0.00
11,400.0	90.00	269.62	6,007.0	-1,425.02	-747.6	-4,733.3	4,787.6	0.00	0.00	0.00
11,500.0	90.00	269.62	6,007.0	-1,425.02	-748.2	-4,833.3	4,887.0	0.00	0.00	0.00
11,600.0	90.00	269.62	6,007.0	-1,425.02	-748.9	-4,933.3	4,986.4	0.00	0.00	0.00
11,700.0	90.00	269.62	6,007.0	-1,425.02	-749.6	-5,033.3	5,085.9	0.00	0.00	0.00
11,800.0	90.00	269.62	6,007.0	-1,425.02	-750.3	-5,133.3	5,185.3	0.00	0.00	0.00
11,900.0	90.00	269.62	6,007.0	-1,425.02	-750.9	-5,233.3	5,284.7	0.00	0.00	0.00
12,000.0	90.00	269.62	6,007.0	-1,425.02	-751.6	-5,333.3	5,384.1	0.00	0.00	0.00
12,100.0	90.00	269.62	6,007.0	-1,425.02	-752.3	-5,433.3	5,483.6	0.00	0.00	0.00
12,200.0	90.00	269.62	6,007.0	-1,425.01	-752.9	-5,533.3	5,583.0	0.00	0.00	0.00
12,300.0	90.00	269.62	6,007.0	-1,425.01	-753.6	-5,633.3	5,682.4	0.00	0.00	0.00
12,400.0	90.00	269.62	6,007.0	-1,425.01	-754.3	-5,733.3	5,781.9	0.00	0.00	0.00
12,500.0	90.00	269.62	6,007.0	-1,425.01	-754.9	-5,833.3	5,881.3	0.00	0.00	0.00
12,600.0	90.00	269.62	6,007.0	-1,425.01	-755.6	-5,933.3	5,980.7	0.00	0.00	0.00
12,700.0	90.00	269.62	6,007.0	-1,425.01	-756.3	-6,033.3	6,080.1	0.00	0.00	0.00
12,800.0	90.00	269.62	6,007.0	-1,425.01	-757.0	-6,133.3	6,179.6	0.00	0.00	0.00
12,900.0	90.00	269.62	6,007.0	-1,425.01	-757.6	-6,233.3	6,279.0	0.00	0.00	0.00
13,000.0	90.00	269.62	6,007.0	-1,425.00	-758.3	-6,333.3	6,378.4	0.00	0.00	0.00
13,100.0	90.00	269.62	6,007.0	-1,425.00	-759.0	-6,433.3	6,477.9	0.00	0.00	0.00
13,200.0	90.00	269.62	6,007.0	-1,425.00	-759.6	-6,533.3	6,577.3	0.00	0.00	0.00
13,300.0	90.00	269.62	6,007.0	-1,425.00	-760.3	-6,633.3	6,676.7	0.00	0.00	0.00
BHL - STATE PRONGHORN 42-32-31MRLNB										
13,330.2	90.00	269.62	6,007.0	-1,425.00	-760.5	-6,663.5	6,706.7	0.00	0.00	0.00

Database:	EDM 5000.1 Single User Db	Local Co-ordinate Reference:	Well STATE PRONGHORN 42-32-31MRLNB
Company:	BONANZA CREEK ENERGY INC.	TVD Reference:	KB-EST @ 4582.0usft (Original Well Elev)
Project:	WELD COUNTY, COLORADO (NAD 83)	MD Reference:	KB-EST @ 4582.0usft (Original Well Elev)
Site:	NE NE SEC. 32 T5N R61W 6th P.M.	North Reference:	True
Well:	STATE PRONGHORN 42-32-31MRLNB	Survey Calculation Method:	Minimum Curvature
Wellbore:	ORIGINAL WELLBORE		
Design:	PROPOSAL #1		

Plan Annotations

MD (usft)	TVD (usft)	Local Coordinates		Comment
		+N/-S (usft)	+E/-W (usft)	
1,200.0	1,200.0	0.0	0.0	START NUDGE (2°/100ft BUR)
2,036.3	2,024.5	-83.5	87.8	EOB TO 16.73° INC
4,777.0	4,649.2	-627.0	659.5	END OF TANGENT
5,613.3	5,473.7	-710.5	747.3	EOD TO VERTICAL
5,643.3	5,503.7	-710.5	747.3	KOP (12°/100ft BUR)
6,268.3	5,964.9	-712.9	393.4	START OF TANGENT
6,368.3	5,990.8	-713.6	296.8	END OF TANGENT
6,493.3	6,007.0	-714.4	173.3	7" ICP *NEW* - STATE PRONGHORN 42-32-31MRLNB
13,330.2	6,007.0	-760.5	-6,663.5	BHL - STATE PRONGHORN 42-32-31MRLNB