

BONANZA CREEK ENERGY INC.

WELD COUNTY, COLORADO (NAD 83)

NE NE SEC. 32 T5N R61W 6th P.M.

STATE PRONGHORN V-32-31MRLNB

ORIGINAL WELLBORE

04 September, 2015

Plan: PROPOSAL #1

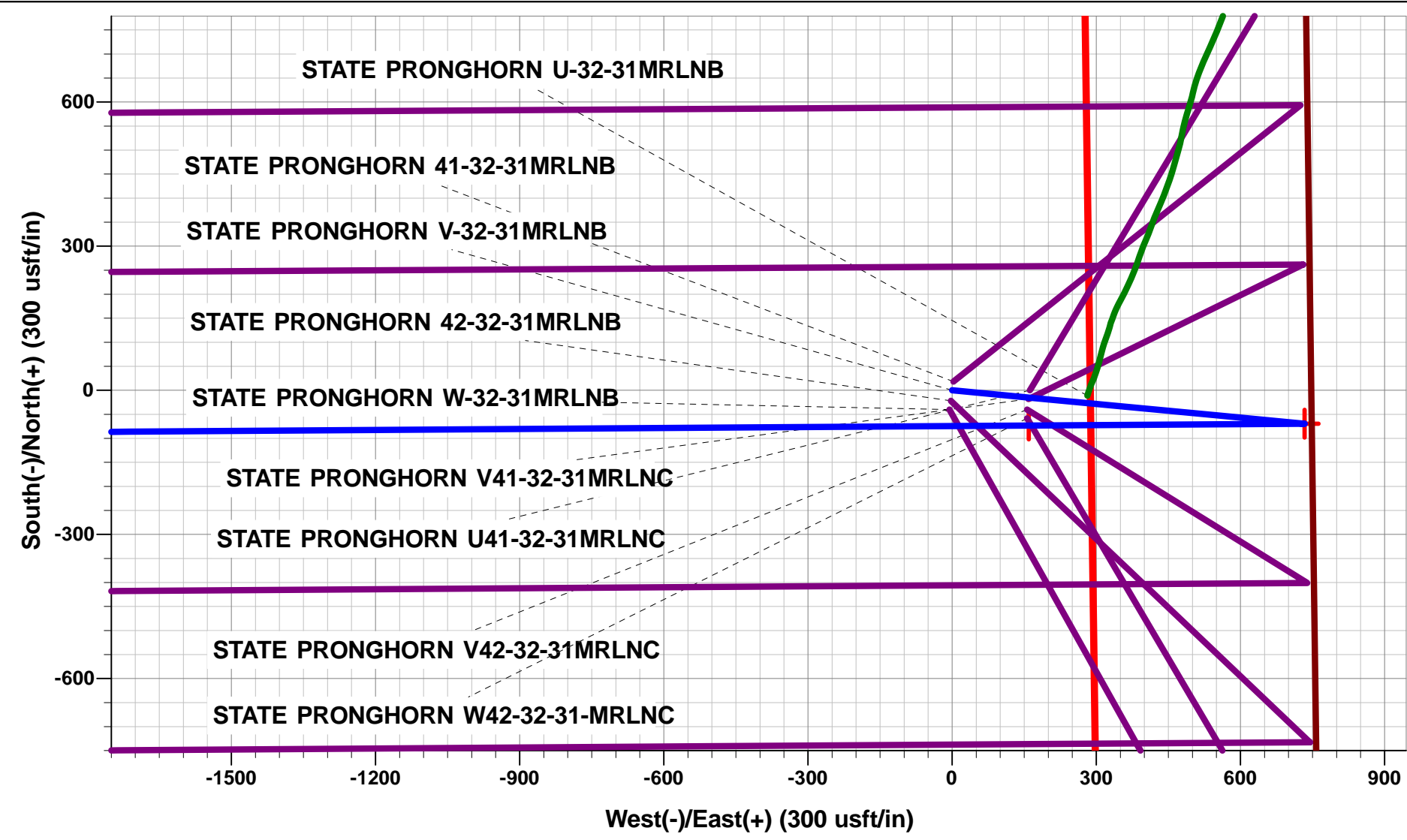




Project: WELD COUNTY, COLORADO (NAD 83)
Site: NE NE SEC. 32 T5N R61W 6th P.M.
Well: STATE PRONGHORN V-32-31MRLNB
Wellbore: ORIGINAL WELLBORE
Design: PROPOSAL #1

ANNOTATIONS									
TVD	MD	Inc	Azi	+N/-S	+E/-W	VSec	Dep	Annotation	
1300.0	1300.0	0.00	0.00	0.0	0.0	0.0	0.0	START NUDGE (2°/100ft BUR)	
1895.5	1899.9	12.00	95.41	-5.9	62.3	-62.2	62.6	EOB TO 12° INC	
4773.2	4841.8	12.00	95.41	-63.5	671.1	-669.9	674.1	END OF TANGENT	
5368.7	5441.7	0.00	0.00	-69.4	733.4	-732.0	736.7	EOD TO VERTICAL	
5503.7	5576.7	0.00	0.00	-69.4	733.4	-732.0	736.7	KOP (12°/100ft BUR)	
5964.9	6201.7	75.00	269.61	-71.8	379.5	-378.2	1090.6	START OF TANGENT	
5990.8	6301.7	75.00	269.61	-72.5	282.9	-281.6	1187.2	END OF TANGENT	
6007.0	6426.7	90.00	269.61	-73.3	159.4	-158.0	1310.7	7" ICP *NEW* - STATE PRONGHORN V-32-31MRLNB	
6007.0	13255.1	90.00	269.62	-119.3	-6668.9	6670.0	8139.1	BHL - STATE PRONGHORN V-32-31MRLNB	

WELLBORE TARGET DETAILS (LAT/LONG)					
Name	TVD	+N/-S	+E/-W	Latitude	Longitude
KOP - STATE PRONGHORN V-32-31MRLNB	5503.7	-69.4	733.4	40.360899	-104.223568
BHL - STATE PRONGHORN V-32-31MRLNB	6007.0	-119.3	-6668.9	40.360760	-104.250130
7" ICP *NEW* - STATE PRONGHORN V-32-31MRLNB	6007.0	-73.3	159.4	40.360889	-104.225628



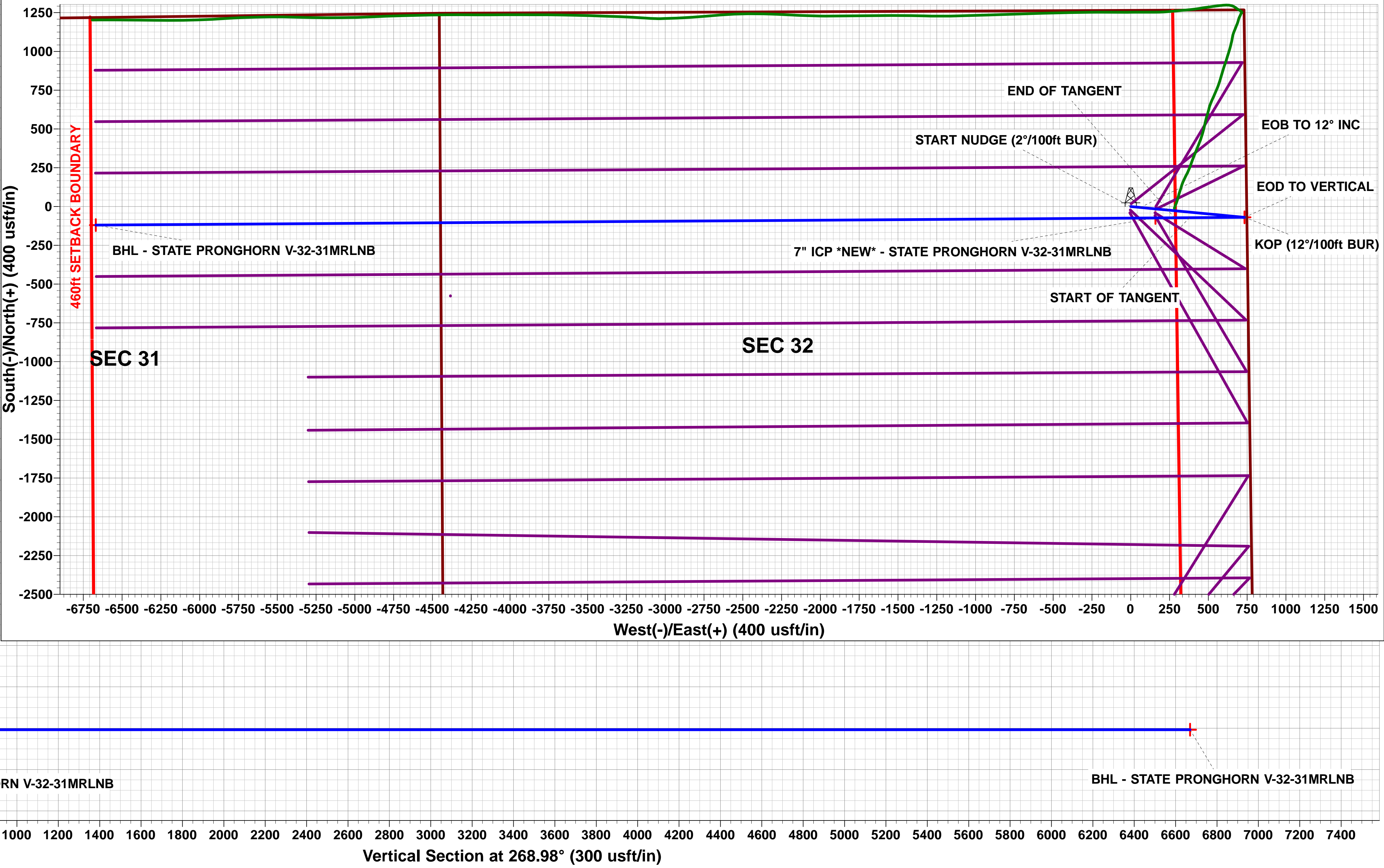
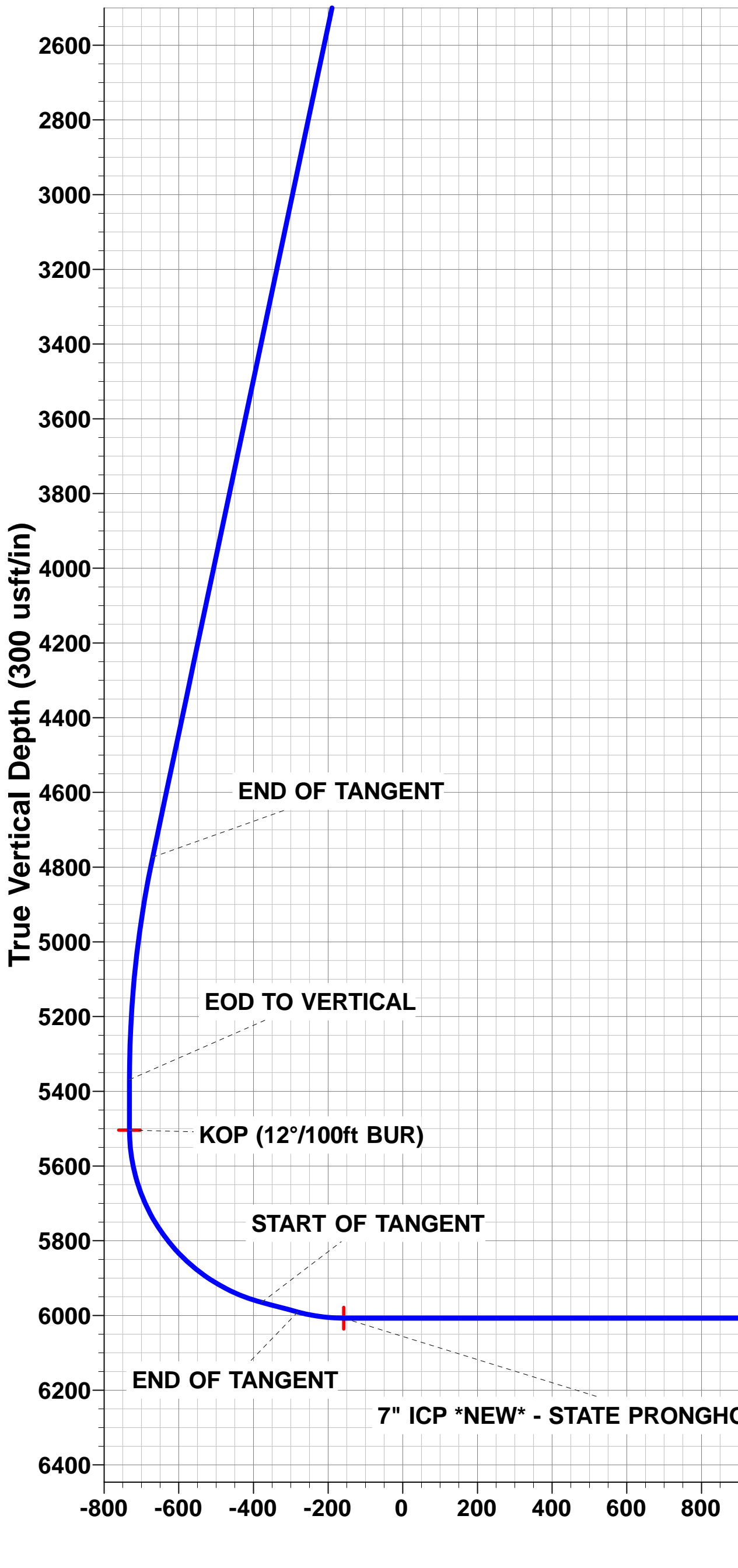
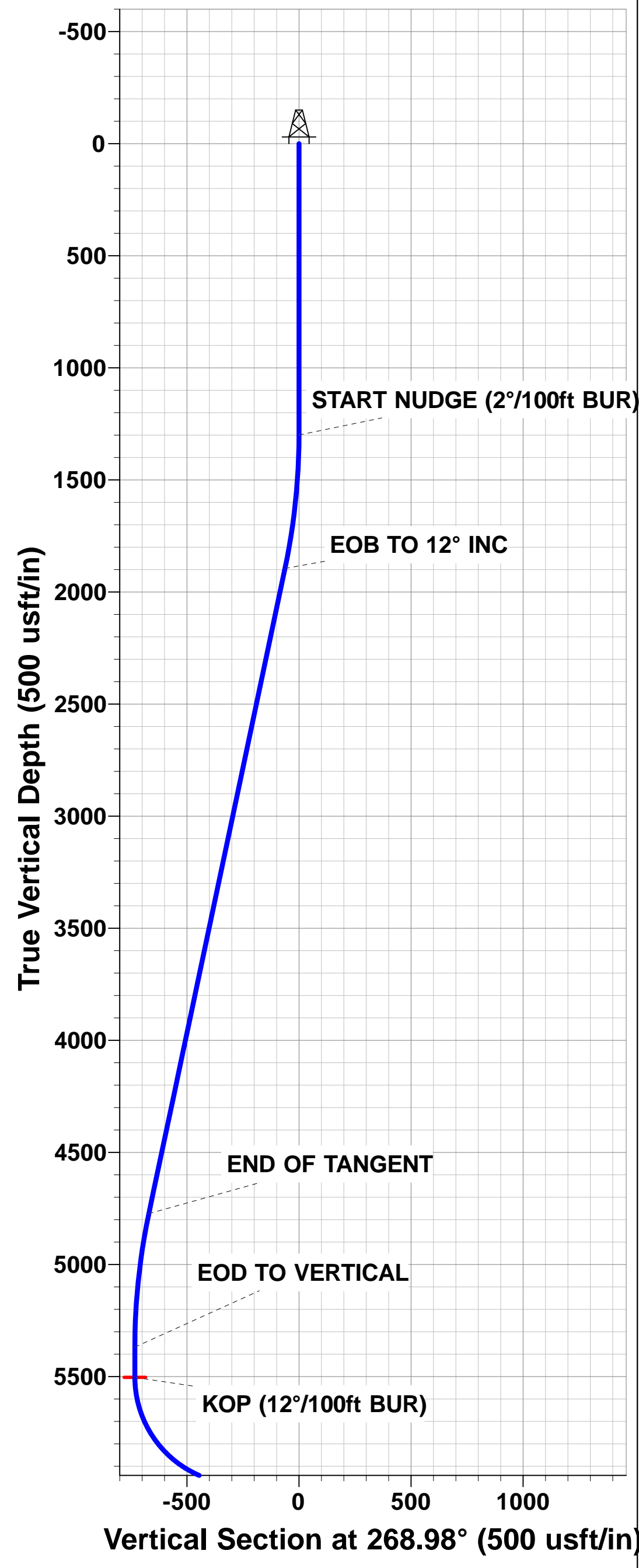
PROPOSED LOCAL COORDINATES:
SHL: 1266ft FNL & 748ft FEL of Sec 32
7" ICP *NEW*: 1338ft FSL & 589ft FEL of Sec 32
BHL: 1338ft FNL & 2221ft FEL of Sec 31

T

M

Azimuths to True North
Magnetic North: 8.11°

Magnetic Field
Strength: 52633.9snT
Dip Angle: 66.95°
Date: 04/09/2015
Model: IGRF2015



Database:	EDM 5000.1 Single User Db	Local Co-ordinate Reference:	Well STATE PRONGHORN V-32-31MRLNB
Company:	BONANZA CREEK ENERGY INC.	TVD Reference:	KB-EST @ 4582.0usft (Original Well Elev)
Project:	WELD COUNTY, COLORADO (NAD 83)	MD Reference:	KB-EST @ 4582.0usft (Original Well Elev)
Site:	NE NE SEC. 32 T5N R61W 6th P.M.	North Reference:	True
Well:	STATE PRONGHORN V-32-31MRLNB	Survey Calculation Method:	Minimum Curvature
Wellbore:	ORIGINAL WELLBORE		
Design:	PROPOSAL #1		

Project	WELD COUNTY, COLORADO (NAD 83)		
Map System:	US State Plane 1983	System Datum:	Mean Sea Level
Geo Datum:	North American Datum 1983		
Map Zone:	Colorado Northern Zone		Using geodetic scale factor

Site	NE NE SEC. 32 T5N R61W 6th P.M.				
Site Position:		Northing:	1,376,924.91 usft	Latitude:	40.361050
From:	Lat/Long	Easting:	3,355,259.04 usft	Longitude:	-104.225120
Position Uncertainty:	0.0 usft	Slot Radius:	1.10000 ft	Grid Convergence:	0.82 °

Well	STATE PRONGHORN V-32-31MRLNB					
Well Position	+N/-S	14.6 usft	Northing:	1,376,935.15 usft	Latitude:	40.361090
	+E/-W	-301.0 usft	Easting:	3,354,957.90 usft	Longitude:	-104.226200
Position Uncertainty		0.0 usft	Wellhead Elevation:	usft	Ground Level:	4,565.0 usft

Wellbore	ORIGINAL WELLBORE				
Magnetics	Model Name	Sample Date	Declination (°)	Dip Angle (°)	Field Strength (nT)
	IGRF2015	04/09/2015	8.11	66.95	52,634

Design	PROPOSAL #1			
Audit Notes:				
Version:	Phase:	PROTOTYPE	Tie On Depth:	0.0
Vertical Section:	Depth From (TVD) (usft)	+N/-S (usft)	+E/-W (usft)	Direction (°)
	6,007.0	0.0	0.0	268.98

Plan Sections											
MD (usft)	Inc (°)	Azi (°)	Vertical Depth	SS (usft)	+N/-S (usft)	+E/-W (usft)	Dogleg Rate (°/100usf)	Build Rate (°/100usf)	Turn Rate (°/100usf)	TFO (°)	Target
0.0	0.00	0.00	0.0	-4,582.0	0.0	0.0	0.00	0.00	0.00	0.00	
1,300.0	0.00	0.00	1,300.0	-3,282.0	0.0	0.0	0.00	0.00	0.00	0.00	
1,899.9	12.00	95.41	1,895.5	-2,686.5	-5.9	62.3	2.00	2.00	0.00	95.41	
4,841.8	12.00	95.41	4,773.2	191.2	-63.5	671.1	0.00	0.00	0.00	0.00	
5,441.7	0.00	0.00	5,368.7	786.7	-69.4	733.4	2.00	-2.00	0.00	180.00	
5,576.7	0.00	0.00	5,503.7	921.7	-69.4	733.4	0.00	0.00	0.00	0.00	KOP - STATE PRO
6,201.7	75.00	269.61	5,964.9	1,382.9	-71.8	379.5	12.00	12.00	0.00	269.61	
6,301.7	75.00	269.61	5,990.8	1,408.8	-72.5	282.9	0.00	0.00	0.00	0.00	
6,426.7	90.00	269.61	6,007.0	1,425.0	-73.3	159.4	12.00	12.00	0.00	0.00	
13,255.1	90.00	269.62	6,007.0	1,425.0	-119.3	-6,668.9	0.00	0.00	0.00	84.35	BHL - STATE PROI

Database:	EDM 5000.1 Single User Db	Local Co-ordinate Reference:	Well STATE PRONGHORN V-32-31MRLNB
Company:	BONANZA CREEK ENERGY INC.	TVD Reference:	KB-EST @ 4582.0usft (Original Well Elev)
Project:	WELD COUNTY, COLORADO (NAD 83)	MD Reference:	KB-EST @ 4582.0usft (Original Well Elev)
Site:	NE NE SEC. 32 T5N R61W 6th P.M.	North Reference:	True
Well:	STATE PRONGHORN V-32-31MRLNB	Survey Calculation Method:	Minimum Curvature
Wellbore:	ORIGINAL WELLBORE		
Design:	PROPOSAL #1		

Planned Survey

MD (usft)	Inc (°)	Azi (°)	TVD (usft)	SS (usft)	+N/-S (usft)	+E/-W (usft)	Vertical Section (usft)	Dogleg Rate (°/100usft)	Build Rate (°/100usft)	Turn Rate (°/100usft)
0.0	0.00	0.00	0.0	4,582.00	0.0	0.0	0.0	0.00	0.00	0.00
100.0	0.00	0.00	100.0	4,482.00	0.0	0.0	0.0	0.00	0.00	0.00
200.0	0.00	0.00	200.0	4,382.00	0.0	0.0	0.0	0.00	0.00	0.00
300.0	0.00	0.00	300.0	4,282.00	0.0	0.0	0.0	0.00	0.00	0.00
400.0	0.00	0.00	400.0	4,182.00	0.0	0.0	0.0	0.00	0.00	0.00
500.0	0.00	0.00	500.0	4,082.00	0.0	0.0	0.0	0.00	0.00	0.00
600.0	0.00	0.00	600.0	3,982.00	0.0	0.0	0.0	0.00	0.00	0.00
700.0	0.00	0.00	700.0	3,882.00	0.0	0.0	0.0	0.00	0.00	0.00
800.0	0.00	0.00	800.0	3,782.00	0.0	0.0	0.0	0.00	0.00	0.00
900.0	0.00	0.00	900.0	3,682.00	0.0	0.0	0.0	0.00	0.00	0.00
1,000.0	0.00	0.00	1,000.0	3,582.00	0.0	0.0	0.0	0.00	0.00	0.00
1,100.0	0.00	0.00	1,100.0	3,482.00	0.0	0.0	0.0	0.00	0.00	0.00
1,200.0	0.00	0.00	1,200.0	3,382.00	0.0	0.0	0.0	0.00	0.00	0.00
START NUDGE (2°/100ft BUR)										
1,300.0	0.00	0.00	1,300.0	3,282.00	0.0	0.0	0.0	0.00	0.00	0.00
1,400.0	2.00	95.41	1,400.0	3,182.02	-0.2	1.7	-1.7	2.00	2.00	0.00
1,500.0	4.00	95.41	1,499.8	3,082.16	-0.7	6.9	-6.9	2.00	2.00	0.00
1,600.0	6.00	95.41	1,599.5	2,982.55	-1.5	15.6	-15.6	2.00	2.00	0.00
1,700.0	8.00	95.41	1,698.7	2,883.30	-2.6	27.8	-27.7	2.00	2.00	0.00
1,800.0	10.00	95.41	1,797.5	2,784.53	-4.1	43.3	-43.2	2.00	2.00	0.00
EOB TO 12° INC										
1,899.9	12.00	95.41	1,895.5	2,686.52	-5.9	62.3	-62.2	2.00	2.00	0.00
1,900.0	12.00	95.41	1,895.6	2,686.38	-5.9	62.3	-62.2	0.00	0.00	0.00
2,000.0	12.00	95.41	1,993.4	2,588.56	-7.9	83.0	-82.9	0.00	0.00	0.00
2,100.0	12.00	95.41	2,091.3	2,490.75	-9.8	103.7	-103.5	0.00	0.00	0.00
2,200.0	12.00	95.41	2,189.1	2,392.93	-11.8	124.4	-124.2	0.00	0.00	0.00
2,300.0	12.00	95.41	2,286.9	2,295.11	-13.7	145.1	-144.8	0.00	0.00	0.00
2,400.0	12.00	95.41	2,384.7	2,197.30	-15.7	165.8	-165.5	0.00	0.00	0.00
2,500.0	12.00	95.41	2,482.5	2,099.48	-17.6	186.5	-186.1	0.00	0.00	0.00
2,600.0	12.00	95.41	2,580.3	2,001.67	-19.6	207.2	-206.8	0.00	0.00	0.00
2,700.0	12.00	95.41	2,678.1	1,903.85	-21.6	227.9	-227.5	0.00	0.00	0.00
2,800.0	12.00	95.41	2,776.0	1,806.03	-23.5	248.6	-248.1	0.00	0.00	0.00
2,900.0	12.00	95.41	2,873.8	1,708.22	-25.5	269.3	-268.8	0.00	0.00	0.00
3,000.0	12.00	95.41	2,971.6	1,610.40	-27.4	290.0	-289.4	0.00	0.00	0.00
3,100.0	12.00	95.41	3,069.4	1,512.59	-29.4	310.7	-310.1	0.00	0.00	0.00
3,200.0	12.00	95.41	3,167.2	1,414.77	-31.4	331.3	-330.7	0.00	0.00	0.00
3,300.0	12.00	95.41	3,265.0	1,316.96	-33.3	352.0	-351.4	0.00	0.00	0.00
3,400.0	12.00	95.41	3,362.9	1,219.14	-35.3	372.7	-372.0	0.00	0.00	0.00
3,500.0	12.00	95.41	3,460.7	1,121.32	-37.2	393.4	-392.7	0.00	0.00	0.00
3,600.0	12.00	95.41	3,558.5	1,023.51	-39.2	414.1	-413.4	0.00	0.00	0.00
3,700.0	12.00	95.41	3,656.3	925.69	-41.1	434.8	-434.0	0.00	0.00	0.00
3,800.0	12.00	95.41	3,754.1	827.88	-43.1	455.5	-454.7	0.00	0.00	0.00
3,900.0	12.00	95.41	3,851.9	730.06	-45.1	476.2	-475.3	0.00	0.00	0.00
4,000.0	12.00	95.41	3,949.8	632.25	-47.0	496.9	-496.0	0.00	0.00	0.00
4,100.0	12.00	95.41	4,047.6	534.43	-49.0	517.6	-516.6	0.00	0.00	0.00
4,200.0	12.00	95.41	4,145.4	436.61	-50.9	538.3	-537.3	0.00	0.00	0.00
4,300.0	12.00	95.41	4,243.2	338.80	-52.9	559.0	-557.9	0.00	0.00	0.00
4,400.0	12.00	95.41	4,341.0	240.98	-54.9	579.7	-578.6	0.00	0.00	0.00
4,500.0	12.00	95.41	4,438.8	143.17	-56.8	600.4	-599.3	0.00	0.00	0.00
4,600.0	12.00	95.41	4,536.6	45.35	-58.8	621.1	-619.9	0.00	0.00	0.00
4,700.0	12.00	95.41	4,634.5	-52.47	-60.7	641.8	-640.6	0.00	0.00	0.00
4,800.0	12.00	95.41	4,732.3	-150.28	-62.7	662.4	-661.2	0.00	0.00	0.00
END OF TANGENT										

Database:	EDM 5000.1 Single User Db	Local Co-ordinate Reference:	Well STATE PRONGHORN V-32-31MRLNB
Company:	BONANZA CREEK ENERGY INC.	TVD Reference:	KB-EST @ 4582.0usft (Original Well Elev)
Project:	WELD COUNTY, COLORADO (NAD 83)	MD Reference:	KB-EST @ 4582.0usft (Original Well Elev)
Site:	NE NE SEC. 32 T5N R61W 6th P.M.	North Reference:	True
Well:	STATE PRONGHORN V-32-31MRLNB	Survey Calculation Method:	Minimum Curvature
Wellbore:	ORIGINAL WELLBORE		
Design:	PROPOSAL #1		

Planned Survey

MD (usft)	Inc (°)	Azi (°)	TVD (usft)	SS (usft)	+N/-S (usft)	+E/-W (usft)	Vertical Section (usft)	Dogleg Rate (°/100usft)	Build Rate (°/100usft)	Turn Rate (°/100usft)
4,841.8	12.00	95.41	4,773.2	-191.22	-63.5	671.1	-669.9	0.00	0.00	0.00
4,900.0	10.83	95.41	4,830.2	-248.22	-64.6	682.6	-681.3	2.00	-2.00	0.00
5,000.0	8.83	95.41	4,928.7	-346.74	-66.2	699.6	-698.3	2.00	-2.00	0.00
5,100.0	6.83	95.41	5,027.8	-445.80	-67.5	713.1	-711.8	2.00	-2.00	0.00
5,200.0	4.83	95.41	5,127.3	-545.28	-68.4	723.3	-721.9	2.00	-2.00	0.00
5,300.0	2.83	95.41	5,227.1	-645.05	-69.1	729.9	-728.6	2.00	-2.00	0.00
5,400.0	0.83	95.41	5,327.0	-744.99	-69.4	733.1	-731.7	2.00	-2.00	0.00
EOD TO VERTICAL										
5,441.7	0.00	0.00	5,368.7	-786.70	-69.4	733.4	-732.0	2.00	-2.00	0.00
5,500.0	0.00	0.00	5,427.0	-844.99	-69.4	733.4	-732.0	0.00	0.00	0.00
KOP (12°/100ft BUR)										
5,576.7	0.00	0.00	5,503.7	-921.70	-69.4	733.4	-732.0	0.00	0.00	0.00
5,600.0	2.80	269.61	5,527.0	-944.98	-69.4	732.8	-731.5	12.00	12.00	0.00
5,700.0	14.80	269.61	5,625.6	-1,043.63	-69.5	717.6	-716.2	12.00	12.00	0.00
5,800.0	26.80	269.61	5,718.9	-1,136.94	-69.7	682.1	-680.8	12.00	12.00	0.00
5,900.0	38.80	269.61	5,802.9	-1,220.85	-70.1	628.1	-626.7	12.00	12.00	0.00
6,000.0	50.80	269.61	5,873.7	-1,291.68	-70.6	557.7	-556.4	12.00	12.00	0.00
6,100.0	62.80	269.61	5,928.3	-1,346.35	-71.2	474.2	-472.9	12.00	12.00	0.00
6,200.0	74.80	269.61	5,964.5	-1,382.45	-71.8	381.2	-379.8	12.00	12.00	0.00
START OF TANGENT										
6,201.7	75.00	269.61	5,964.9	-1,382.90	-71.8	379.5	-378.2	12.00	12.00	0.00
6,300.0	75.00	269.61	5,990.3	-1,408.34	-72.5	284.6	-283.2	0.00	0.00	0.00
END OF TANGENT										
6,301.7	75.00	269.61	5,990.8	-1,408.78	-72.5	282.9	-281.6	0.00	0.00	0.00
6,400.0	86.80	269.61	6,006.3	-1,424.30	-73.1	186.0	-184.7	12.00	12.00	0.00
7" ICP *NEW* - STATE PRONGHORN V-32-31MRLNB										
6,426.7	90.00	269.61	6,007.0	-1,425.05	-73.3	159.4	-158.0	12.00	12.00	0.00
6,500.0	90.00	269.61	6,007.0	-1,425.05	-73.8	86.1	-84.7	0.00	0.00	0.00
6,600.0	90.00	269.61	6,007.0	-1,425.05	-74.5	-13.9	15.3	0.00	0.00	0.00
6,700.0	90.00	269.61	6,007.0	-1,425.05	-75.2	-113.9	115.3	0.00	0.00	0.00
6,800.0	90.00	269.61	6,007.0	-1,425.05	-75.8	-213.9	215.3	0.00	0.00	0.00
6,900.0	90.00	269.61	6,007.0	-1,425.05	-76.5	-313.9	315.2	0.00	0.00	0.00
7,000.0	90.00	269.61	6,007.0	-1,425.05	-77.2	-413.9	415.2	0.00	0.00	0.00
7,100.0	90.00	269.61	6,007.0	-1,425.05	-77.9	-513.9	515.2	0.00	0.00	0.00
7,200.0	90.00	269.61	6,007.0	-1,425.05	-78.6	-613.9	615.2	0.00	0.00	0.00
7,300.0	90.00	269.61	6,007.0	-1,425.05	-79.2	-713.9	715.2	0.00	0.00	0.00
7,400.0	90.00	269.61	6,007.0	-1,425.05	-79.9	-813.9	815.2	0.00	0.00	0.00
7,500.0	90.00	269.61	6,007.0	-1,425.05	-80.6	-913.9	915.2	0.00	0.00	0.00
7,600.0	90.00	269.61	6,007.0	-1,425.05	-81.3	-1,013.9	1,015.2	0.00	0.00	0.00
7,700.0	90.00	269.61	6,007.0	-1,425.05	-82.0	-1,113.9	1,115.2	0.00	0.00	0.00
7,800.0	90.00	269.61	6,007.0	-1,425.04	-82.6	-1,213.9	1,215.2	0.00	0.00	0.00
7,900.0	90.00	269.61	6,007.0	-1,425.04	-83.3	-1,313.9	1,315.2	0.00	0.00	0.00
8,000.0	90.00	269.61	6,007.0	-1,425.04	-84.0	-1,413.9	1,415.2	0.00	0.00	0.00
8,100.0	90.00	269.61	6,007.0	-1,425.04	-84.7	-1,513.9	1,515.2	0.00	0.00	0.00
8,200.0	90.00	269.61	6,007.0	-1,425.04	-85.3	-1,613.9	1,615.2	0.00	0.00	0.00
8,300.0	90.00	269.61	6,007.0	-1,425.04	-86.0	-1,713.9	1,715.2	0.00	0.00	0.00
8,400.0	90.00	269.61	6,007.0	-1,425.04	-86.7	-1,813.9	1,815.2	0.00	0.00	0.00
8,500.0	90.00	269.61	6,007.0	-1,425.04	-87.4	-1,913.9	1,915.1	0.00	0.00	0.00
8,600.0	90.00	269.61	6,007.0	-1,425.04	-88.1	-2,013.9	2,015.1	0.00	0.00	0.00
8,700.0	90.00	269.61	6,007.0	-1,425.04	-88.7	-2,113.9	2,115.1	0.00	0.00	0.00
8,800.0	90.00	269.61	6,007.0	-1,425.04	-89.4	-2,213.9	2,215.1	0.00	0.00	0.00
8,900.0	90.00	269.61	6,007.0	-1,425.04	-90.1	-2,313.9	2,315.1	0.00	0.00	0.00
9,000.0	90.00	269.61	6,007.0	-1,425.04	-90.8	-2,413.9	2,415.1	0.00	0.00	0.00
9,100.0	90.00	269.61	6,007.0	-1,425.04	-91.4	-2,513.9	2,515.1	0.00	0.00	0.00

Database:	EDM 5000.1 Single User Db	Local Co-ordinate Reference:	Well STATE PRONGHORN V-32-31MRLNB
Company:	BONANZA CREEK ENERGY INC.	TVD Reference:	KB-EST @ 4582.0usft (Original Well Elev)
Project:	WELD COUNTY, COLORADO (NAD 83)	MD Reference:	KB-EST @ 4582.0usft (Original Well Elev)
Site:	NE NE SEC. 32 T5N R61W 6th P.M.	North Reference:	True
Well:	STATE PRONGHORN V-32-31MRLNB	Survey Calculation Method:	Minimum Curvature
Wellbore:	ORIGINAL WELLBORE		
Design:	PROPOSAL #1		

Planned Survey

MD (usft)	Inc (°)	Azi (°)	TVD (usft)	SS (usft)	+N/-S (usft)	+E/-W (usft)	Vertical Section (usft)	Dogleg Rate (°/100usft)	Build Rate (°/100usft)	Turn Rate (°/100usft)
9,200.0	90.00	269.61	6,007.0	-1,425.04	-92.1	-2,613.9	2,615.1	0.00	0.00	0.00
9,300.0	90.00	269.61	6,007.0	-1,425.04	-92.8	-2,713.9	2,715.1	0.00	0.00	0.00
9,400.0	90.00	269.61	6,007.0	-1,425.04	-93.5	-2,813.9	2,815.1	0.00	0.00	0.00
9,500.0	90.00	269.61	6,007.0	-1,425.04	-94.1	-2,913.9	2,915.1	0.00	0.00	0.00
9,600.0	90.00	269.61	6,007.0	-1,425.04	-94.8	-3,013.9	3,015.1	0.00	0.00	0.00
9,700.0	90.00	269.61	6,007.0	-1,425.04	-95.5	-3,113.9	3,115.1	0.00	0.00	0.00
9,800.0	90.00	269.61	6,007.0	-1,425.04	-96.2	-3,213.9	3,215.1	0.00	0.00	0.00
9,900.0	90.00	269.61	6,007.0	-1,425.03	-96.8	-3,313.9	3,315.1	0.00	0.00	0.00
10,000.0	90.00	269.61	6,007.0	-1,425.03	-97.5	-3,413.9	3,415.1	0.00	0.00	0.00
10,100.0	90.00	269.61	6,007.0	-1,425.03	-98.2	-3,513.9	3,515.0	0.00	0.00	0.00
10,200.0	90.00	269.61	6,007.0	-1,425.03	-98.8	-3,613.9	3,615.0	0.00	0.00	0.00
10,300.0	90.00	269.61	6,007.0	-1,425.03	-99.5	-3,713.8	3,715.0	0.00	0.00	0.00
10,400.0	90.00	269.61	6,007.0	-1,425.03	-100.2	-3,813.8	3,815.0	0.00	0.00	0.00
10,500.0	90.00	269.61	6,007.0	-1,425.03	-100.9	-3,913.8	3,915.0	0.00	0.00	0.00
10,600.0	90.00	269.61	6,007.0	-1,425.03	-101.5	-4,013.8	4,015.0	0.00	0.00	0.00
10,700.0	90.00	269.61	6,007.0	-1,425.03	-102.2	-4,113.8	4,115.0	0.00	0.00	0.00
10,800.0	90.00	269.62	6,007.0	-1,425.03	-102.9	-4,213.8	4,215.0	0.00	0.00	0.00
10,900.0	90.00	269.62	6,007.0	-1,425.03	-103.6	-4,313.8	4,315.0	0.00	0.00	0.00
11,000.0	90.00	269.62	6,007.0	-1,425.03	-104.2	-4,413.8	4,415.0	0.00	0.00	0.00
11,100.0	90.00	269.62	6,007.0	-1,425.02	-104.9	-4,513.8	4,515.0	0.00	0.00	0.00
11,200.0	90.00	269.62	6,007.0	-1,425.02	-105.6	-4,613.8	4,615.0	0.00	0.00	0.00
11,300.0	90.00	269.62	6,007.0	-1,425.02	-106.2	-4,713.8	4,715.0	0.00	0.00	0.00
11,400.0	90.00	269.62	6,007.0	-1,425.02	-106.9	-4,813.8	4,815.0	0.00	0.00	0.00
11,500.0	90.00	269.62	6,007.0	-1,425.02	-107.6	-4,913.8	4,915.0	0.00	0.00	0.00
11,600.0	90.00	269.62	6,007.0	-1,425.02	-108.2	-5,013.8	5,015.0	0.00	0.00	0.00
11,700.0	90.00	269.62	6,007.0	-1,425.02	-108.9	-5,113.8	5,114.9	0.00	0.00	0.00
11,800.0	90.00	269.62	6,007.0	-1,425.02	-109.6	-5,213.8	5,214.9	0.00	0.00	0.00
11,900.0	90.00	269.62	6,007.0	-1,425.02	-110.3	-5,313.8	5,314.9	0.00	0.00	0.00
12,000.0	90.00	269.62	6,007.0	-1,425.02	-110.9	-5,413.8	5,414.9	0.00	0.00	0.00
12,100.0	90.00	269.62	6,007.0	-1,425.01	-111.6	-5,513.8	5,514.9	0.00	0.00	0.00
12,200.0	90.00	269.62	6,007.0	-1,425.01	-112.3	-5,613.8	5,614.9	0.00	0.00	0.00
12,300.0	90.00	269.62	6,007.0	-1,425.01	-112.9	-5,713.8	5,714.9	0.00	0.00	0.00
12,400.0	90.00	269.62	6,007.0	-1,425.01	-113.6	-5,813.8	5,814.9	0.00	0.00	0.00
12,500.0	90.00	269.62	6,007.0	-1,425.01	-114.3	-5,913.8	5,914.9	0.00	0.00	0.00
12,600.0	90.00	269.62	6,007.0	-1,425.01	-114.9	-6,013.8	6,014.9	0.00	0.00	0.00
12,700.0	90.00	269.62	6,007.0	-1,425.01	-115.6	-6,113.8	6,114.9	0.00	0.00	0.00
12,800.0	90.00	269.62	6,007.0	-1,425.01	-116.3	-6,213.8	6,214.9	0.00	0.00	0.00
12,900.0	90.00	269.62	6,007.0	-1,425.00	-116.9	-6,313.8	6,314.9	0.00	0.00	0.00
13,000.0	90.00	269.62	6,007.0	-1,425.00	-117.6	-6,413.8	6,414.9	0.00	0.00	0.00
13,100.0	90.00	269.62	6,007.0	-1,425.00	-118.3	-6,513.8	6,514.9	0.00	0.00	0.00
13,200.0	90.00	269.62	6,007.0	-1,425.00	-118.9	-6,613.8	6,614.9	0.00	0.00	0.00
BHL - STATE PRONGHORN V-32-31MRLNB										
13,255.1	90.00	269.62	6,007.0	-1,425.00	-119.3	-6,668.9	6,670.0	0.00	0.00	0.00

Database:	EDM 5000.1 Single User Db	Local Co-ordinate Reference:	Well STATE PRONGHORN V-32-31MRLNB
Company:	BONANZA CREEK ENERGY INC.	TVD Reference:	KB-EST @ 4582.0usft (Original Well Elev)
Project:	WELD COUNTY, COLORADO (NAD 83)	MD Reference:	KB-EST @ 4582.0usft (Original Well Elev)
Site:	NE NE SEC. 32 T5N R61W 6th P.M.	North Reference:	True
Well:	STATE PRONGHORN V-32-31MRLNB	Survey Calculation Method:	Minimum Curvature
Wellbore:	ORIGINAL WELLBORE		
Design:	PROPOSAL #1		

Plan Annotations

MD (usft)	TVD (usft)	Local Coordinates		Comment
		+N/-S (usft)	+E/-W (usft)	
1,300.0	1,300.0	0.0	0.0	START NUDGE (2°/100ft BUR)
1,899.9	1,895.5	-5.9	62.3	EOB TO 12° INC
4,841.8	4,773.2	-63.5	671.1	END OF TANGENT
5,441.7	5,368.7	-69.4	733.4	EOD TO VERTICAL
5,576.7	5,503.7	-69.4	733.4	KOP (12°/100ft BUR)
6,201.7	5,964.9	-71.8	379.5	START OF TANGENT
6,301.7	5,990.8	-72.5	282.9	END OF TANGENT
6,426.7	6,007.0	-73.3	159.4	7" ICP *NEW* - STATE PRONGHORN V-32-31MRLNB
13,255.1	6,007.0	-119.3	-6,668.9	BHL - STATE PRONGHORN V-32-31MRLNB