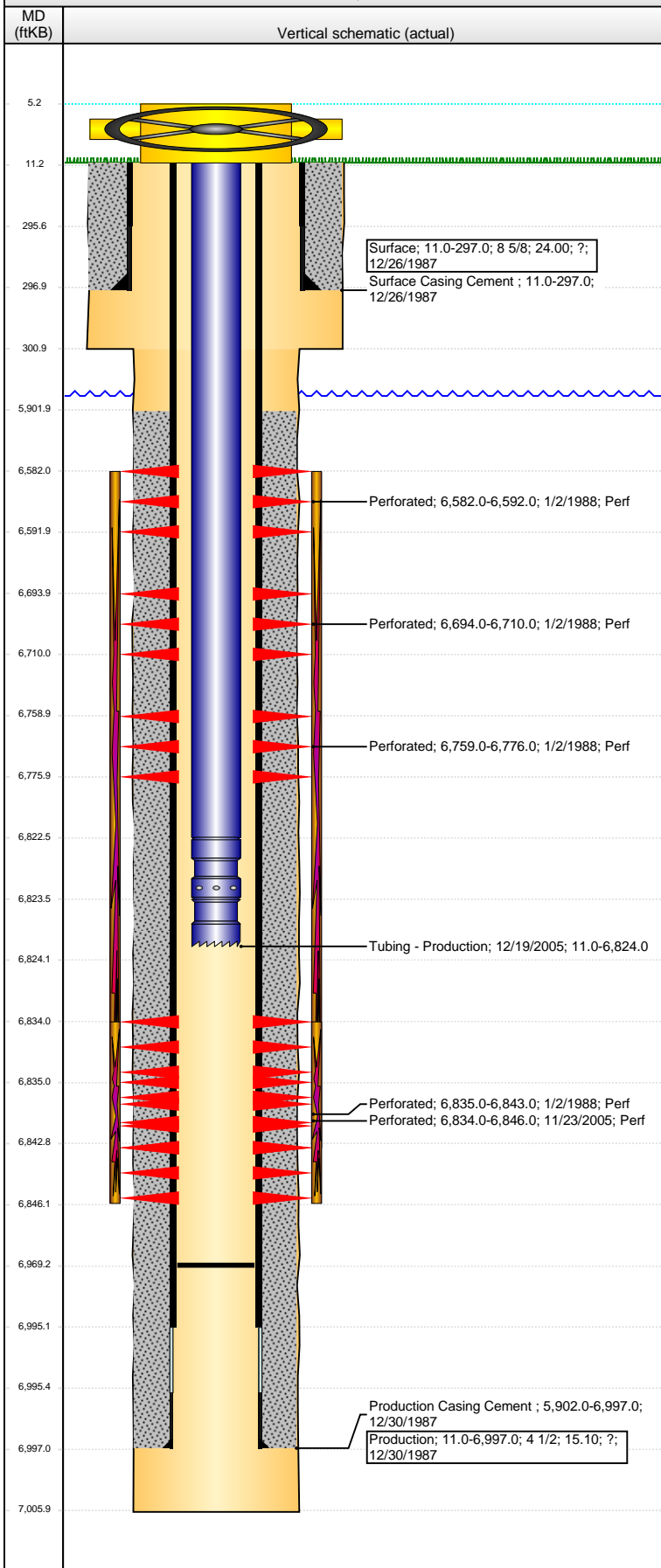


**Well Name: PETRIKIN A34-12**

VERTICAL - ORIGINAL HOLE, 10/1/2015 10:22:26 AM



Well Header			
API	Business Unit	District	Well Config
05-123-13728	DJ BASIN	15	VERTICAL
Original KB Elevation (ft)	KB - GL / MSL (ftKB)	Spud Date	P & A Date
4,658.00	11.00	12/26/1987	
Comment			
DISCREPANCY IN TD: DRL RPT 7006', ST RPT 7002', USED 7006'			
SURFACE CSG DEPTH: DRL RPT 297', ST 299' USED 297'			
PROD CSG DEPTH: DRL RPT 6997', ST RPT 7002, USED 6997'			
Directions To Well			
Congressional Location			
Quarter 1	Quarter 2	Quarter 3	Quarter 4
		NW	SW
Section	Township	Twntshp N...	Range
34	6	N	64
Rng E/W Dir			
W			
Bottom Hole Location			
North-South Distance (ft)	From N or S Line	East-West Distance (ft)	From E or W Line
Plug Back Total Depths			
Date	Depth (ftKB)	Method	Com
1/2/1988	6,940.0	CASED HOLE LOG	DEPTH LOGGER FROM CBL
11/18/2005	6,969.0	TAG	CLEAN OUT
Wellbore Sections			
Section Des	Size (in)	Act Top, MD (ftKB)	Act Btm, MD (ftKB)
SURFACE	12 1/4	11.0	301.0
PRODUCTION	7 7/8	301.0	7,006.0
Zone Statuses			
Zone Name	Status Date	Status	Fluid Type
NIOBRARA	1/14/1988	PR	
CODELL	1/14/1988	PR	
CODELL	12/9/2005	PR	
Casing Strings			
Surface, 297.0ftKB			
Casing Description	Run Date	OD (in)	Wt/Len (l...)
Surface	12/26/1987	8 5/8	24.00
Grade	Top, MD (ft...)	MD (ftKB)	
?	11.0	297.0	
Production, 6,997.0ftKB			
Casing Description	Run Date	OD (in)	Wt/Len (l...)
Production	12/30/1987	4 1/2	15.10
Grade	Top, MD (ft...)	MD (ftKB)	
?	11.0	6,997.0	
Cement			
Description	Top Depth (ftKB)	Bottom Depth (ftKB)	
Surface Casing Cement	11.0	297.0	
Description	Top Depth (ftKB)	Bottom Depth (ftKB)	
Production Casing Cement	5,902.0	6,997.0	
Tubing Strings			
Tubing Description	Run Date	String...	ID (in)
Tubing - Production	12/19/2005	5	2 3/8
Wt (lb/ft)	Grade	Len (ft)	Set De...
4.70	J-55	6,813.00	
Tubing Components			
Item Des	OD (in)	Wt (lb/ft)	Grade
EUE 8rd Tubing	2 3/8	4.70	J-55
Jts	Len (ft)	Btm (ftKB)	Btm (TVD) (ftKB)
207	6,811.50	6,822.5	
Seal Nipple	2 3/8		1.00
Notched collar	2 3/8		0.50
Perforation Data			
Zone	Bnch/St g	Entered Shot Total	Top (ftKB)
NIOBRARA, ORIGINAL HOLE	A	5	6,582.00
NIOBRARA, ORIGINAL HOLE	B	2	6,694.00
NIOBRARA, ORIGINAL HOLE	C	3	6,759.00
CODELL, ORIGINAL HOLE		48	6,834.00
CODELL, ORIGINAL HOLE		5	6,835.00
Stimulations & Treatments			
Date	Zone	Primary Job Type	
1/4/1988	NIOBRARA-CODELL, ORIGINAL HOLE	DRILLING/COMPLETION - ORIGINAL	
Technical Result		Tech Result Details	Tech Result Note
Comment			
LIMITED ENTRY			

**Well Name: PETRIKIN A34-12**

VERTICAL - ORIGINAL HOLE, 10/1/2015 10:22:29 AM

### Stimulations & Treatments

Date	Zone	Primary Job Type
12/8/2005	CODELL, ORIGINAL HOLE	RE-FRAC
Technical Result	Tech Result Details	Tech Result Note
Comment		

### Other In Hole

Run Date	Des	OD (in)	Top (ftKB)	Btm (ftKB)

### Logs

Date	Type	Top, MD (ftKB)	Btm, MD (ftKB)
12/29/1987	INDUCTION	299.0	7,000.0
12/29/1987	SPECTRAL DENSITY	299.0	7,000.0
1/2/1988	CEMENT BOND	5,700.0	6,936.0

