

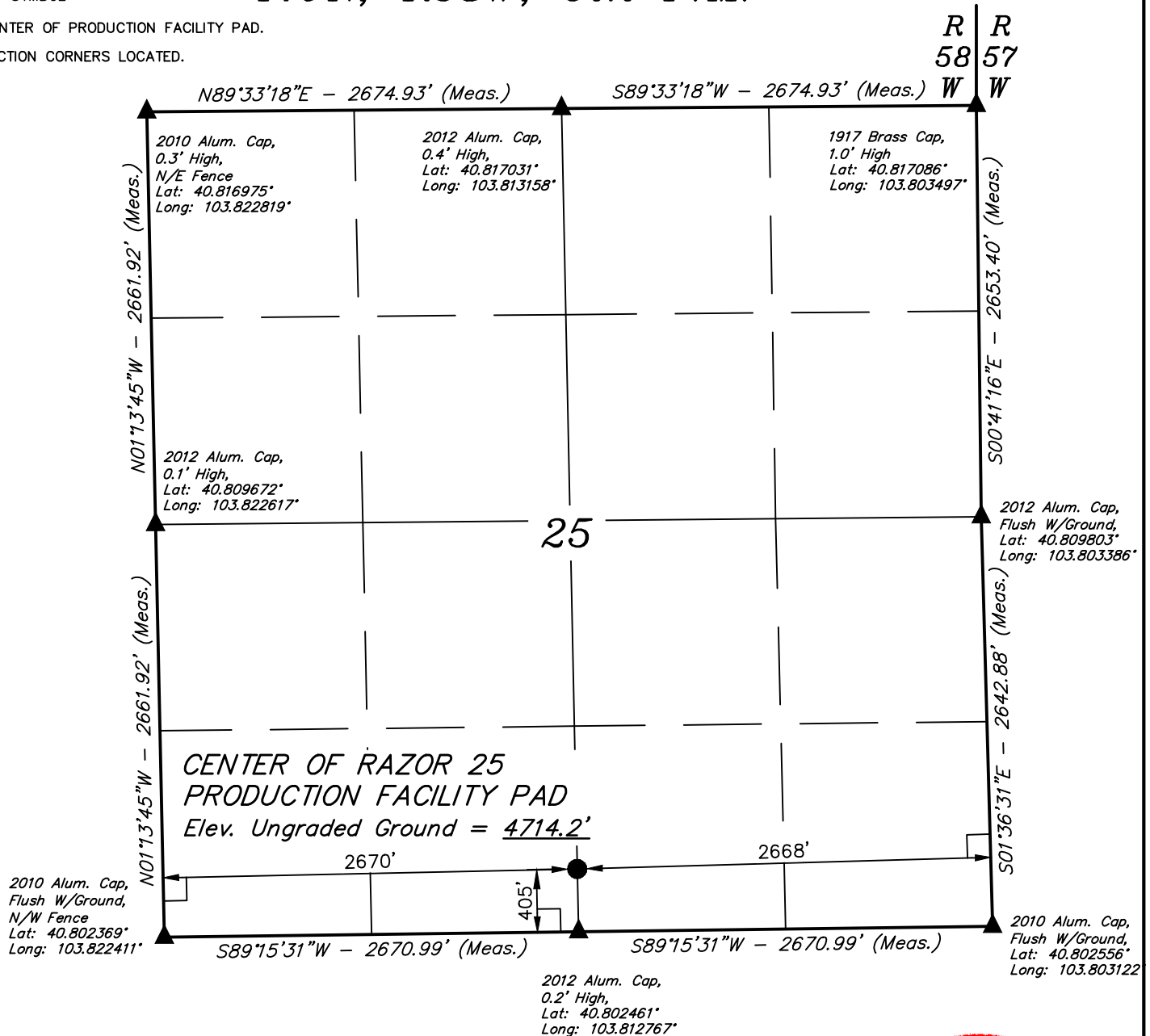
LEGEND:

└─ = 90° SYMBOL

● = CENTER OF PRODUCTION FACILITY PAD.

▲ = SECTION CORNERS LOCATED.

T10N, R58W, 6th P.M.



PDOP = 1.3



NAD 83 (CENTER OF RAZOR 25 PRODUCTION FACILITY PAD)

LATITUDE = 40°48'12.87" (40.803575)
LONGITUDE = 103°48'46.08" (103.812800)

NAD 27 (CENTER OF RAZOR 25 PRODUCTION FACILITY PAD)

LATITUDE = 40°48'12.92" (40.803589)
LONGITUDE = 103°48'44.27" (103.812297)

BASIS OF BEARINGS

BASIS OF BEARINGS IS A G.P.S. OBSERVATION

BASIS OF ELEVATION

SPOT ELEVATION LOCATED AT THE NORTHEAST CORNER OF SECTION 15, T9N, R58W, 6th P.M. TAKEN FROM THE GATEHOOK SPRING, QUADRANGLE, COLORADO, WELD COUNTY, 7.5 MINUTE QUAD (TOPOGRAPHIC MAP) PUBLISHED BY THE UNITED STATES DEPARTMENT OF THE INTERIOR, GEOLOGICAL SURVEY. SAID ELEVATION IS MARKED AS BEING 4679 FEET.



UELS, LLC
Corporate Office * 85 South 200 East
Vernal, UT 84078 * (435) 789-1017

CERTIFICATE

THIS IS TO CERTIFY THAT THE ABOVE PLAT WAS PREPARED FROM FIELD NOTES OF ACTUAL SURVEYS MADE BY ME OR UNDER MY SUPERVISION AND THAT THE SAME ARE TRUE AND CORRECT TO THE BEST OF MY KNOWLEDGE AND BELIEF.

REGISTERED LAND SURVEYOR
REGISTRATION NO. 28285
STATE OF COLORADO

08-06-15

WHITING OIL & GAS CORP.

**CENTER OF RAZOR 25 PRODUCTION FACILITY PAD
SE 1/4 SW 1/4, OF SECTION 25, T10N, R58W, 6th P.M.
WELD COUNTY, COLORADO**

SURVEYED BY: JARED CHRISTOPHER, B.C.	DATE: 08-05-15
DRAWN BY: K.B.	DATE DRAWN: 08-06-15
SCALE: 1" = 1000'	REVISED: 00-00-00

LOCATION PLAT