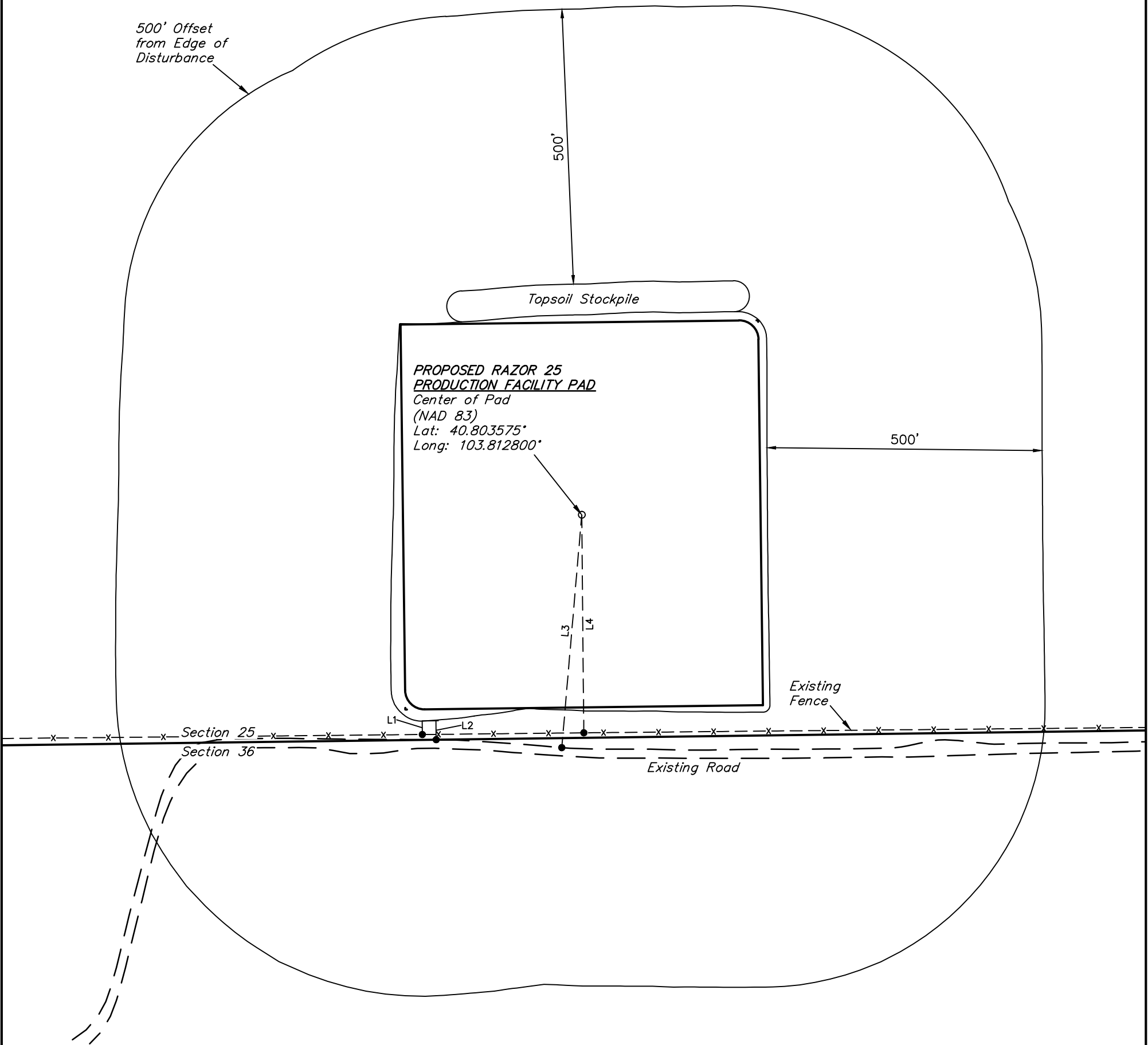


LINE TABLE		
LINE	DIRECTION	LENGTH
L1	SOUTH	25'
L2	S01'E	34'
L3	S05'W	425'
L4	S01'E	396'



WHITING OIL & GAS CORP.
RAZOR 25 PRODUCTION FACILITY PAD
405' FSL 2670' FWL
SE 1/4 SW 1/4, SECTION 25, T10N, R58W, 6th P.M.
WELD COUNTY, COLORADO

SURVEYED BY: JARED CHRISTOPHER	SURVEY DATE: 08-05-15
DRAWN BY: K.B.	DATE DRAWN: 08-06-15
SCALE: 1" = 200'	REVISED: 00-00-00

LOCATION DRAWING



UELS, LLC
Corporate Office * 85 South 200 East
Vernal, UT 84078 * (435) 789-1017