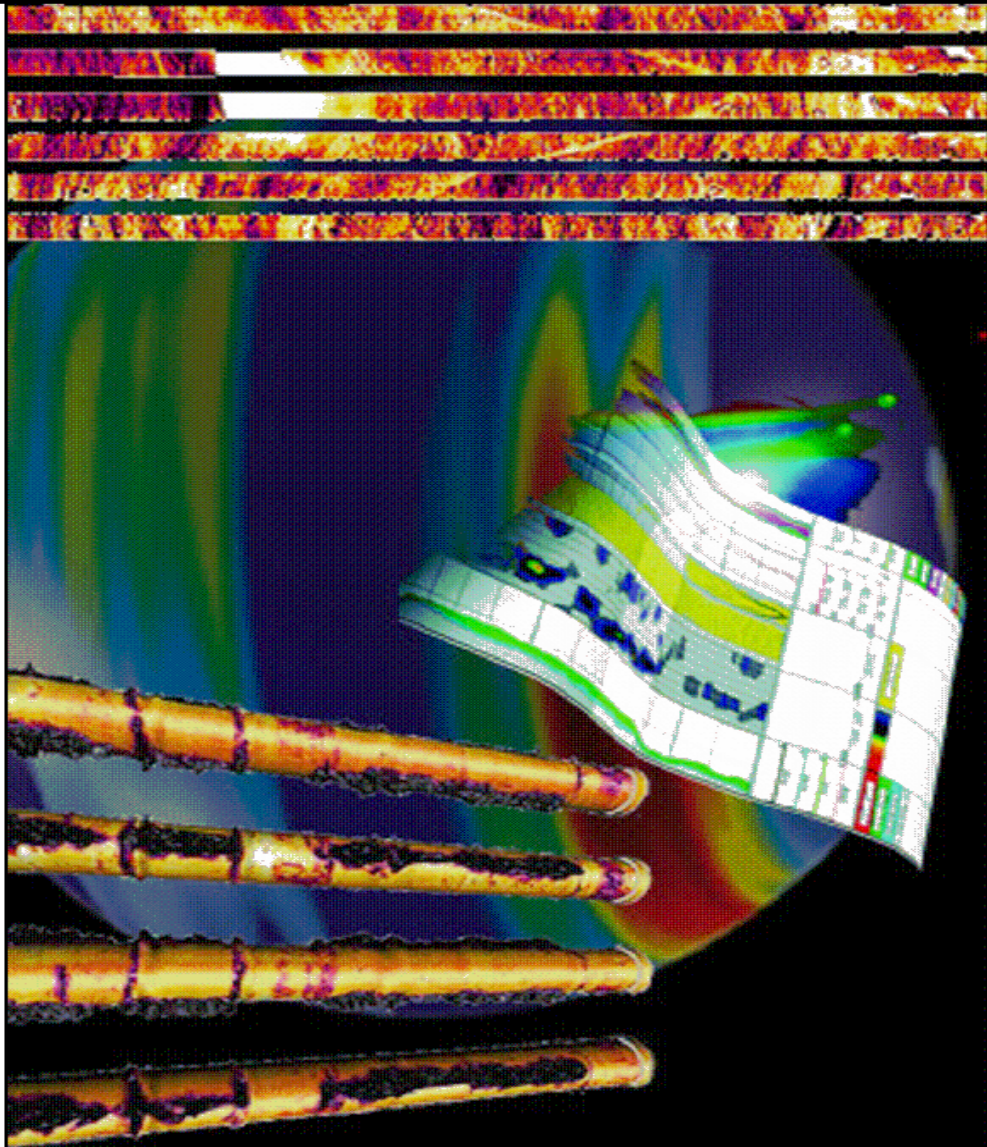


HALLIBURTON



RMTI NEURAL NETWORK CHI TRIPLE COMBO

COMPANY Ursa Operating Co.

WELL YATER 22B-17-07-95

FIELD/BLOCK PARACHUTE

COUNTY Garfield

STATE

CO

Location

SURFACE HOLE LOCATION:
1704' FSL & 1129' FWL

Elev.: K.B. 5536.00 ft

D.F.

G.L. 5519.00 ft

Date Processed 09/04/2015

Processed At DENVER FRS

Interval Processed 3750'-6955'

Processed By P. LOWREY

Fold here

Service Ticket No.: 902898238

PGM Version:

Logs Processed: RMTI

Date Logged: 08/30/2015

Type Fluid In Hole: FRESH WATER

DIRECTIONAL INFORMATION

Maximum Deviation

@

KOP

@

Remarks: HES CEMENT BOND LOG CORRELATED WITH 17' KB

LOG INTERVALS PER CUSTOMER REQUEST

RMT-CBL RUN IN 4.5 IN CASING 11.5#

TRAINING WELL: YATER 12D-17-07-95

NNDPHI COMPUTED FROM NNRHOB USING 2.68 g/cc MATRIX DENSITY AND 1.0 g/cc FLUID DENSITY.

HALLIBURTON DOES NOT GUARANTEE THE ACCURACY OF ANY INTERPRETATION OF THE LOG DATA, CONVERSION OF LOG DATA TO PHYSICAL ROCK PARAMETERS OR RECOMMENDATIONS WHICH MAY BE GIVEN BY HALLIBURTON PERSONNEL OR WHICH APPEAR ON THE LOG OR IN ANY OTHER FORM. ANY USER OF SUCH DATA, INTERPRETATIONS, CONVERSIONS, OR RECOMMENDATIONS AGREES THAT HALLIBURTON IS NOT RESPONSIBLE EXCEPT WHERE DUE TO GROSS NEGLIGENCE OR WILLFUL MISCONDUCT, FOR ANY LOSS, DAMAGES, OR EXPENSES RESULTING FROM THE USE THEREOF.

HALLIBURTON

CHI MODELED TRIPLE COMBO

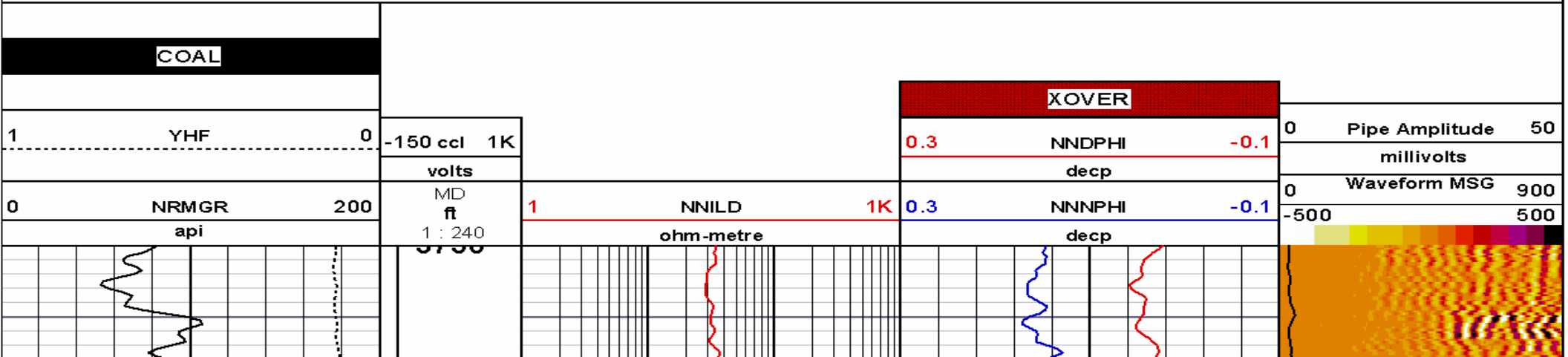
Track 1
YHF Hydrogen Yield
NRMGR (api) Normalized Gamma Ray

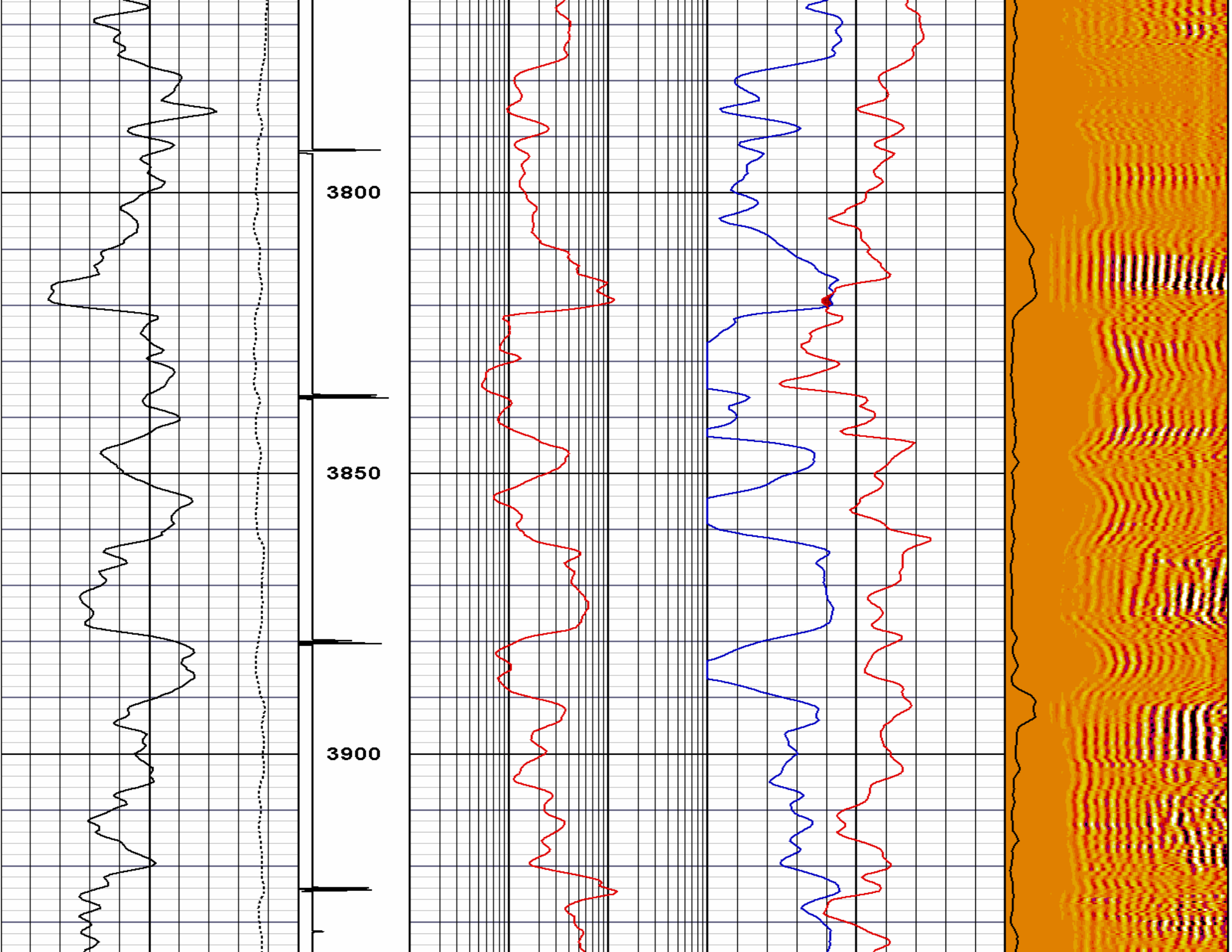
Depth Track
DEPT (ft) Depth
CCL (V) Collar Locator

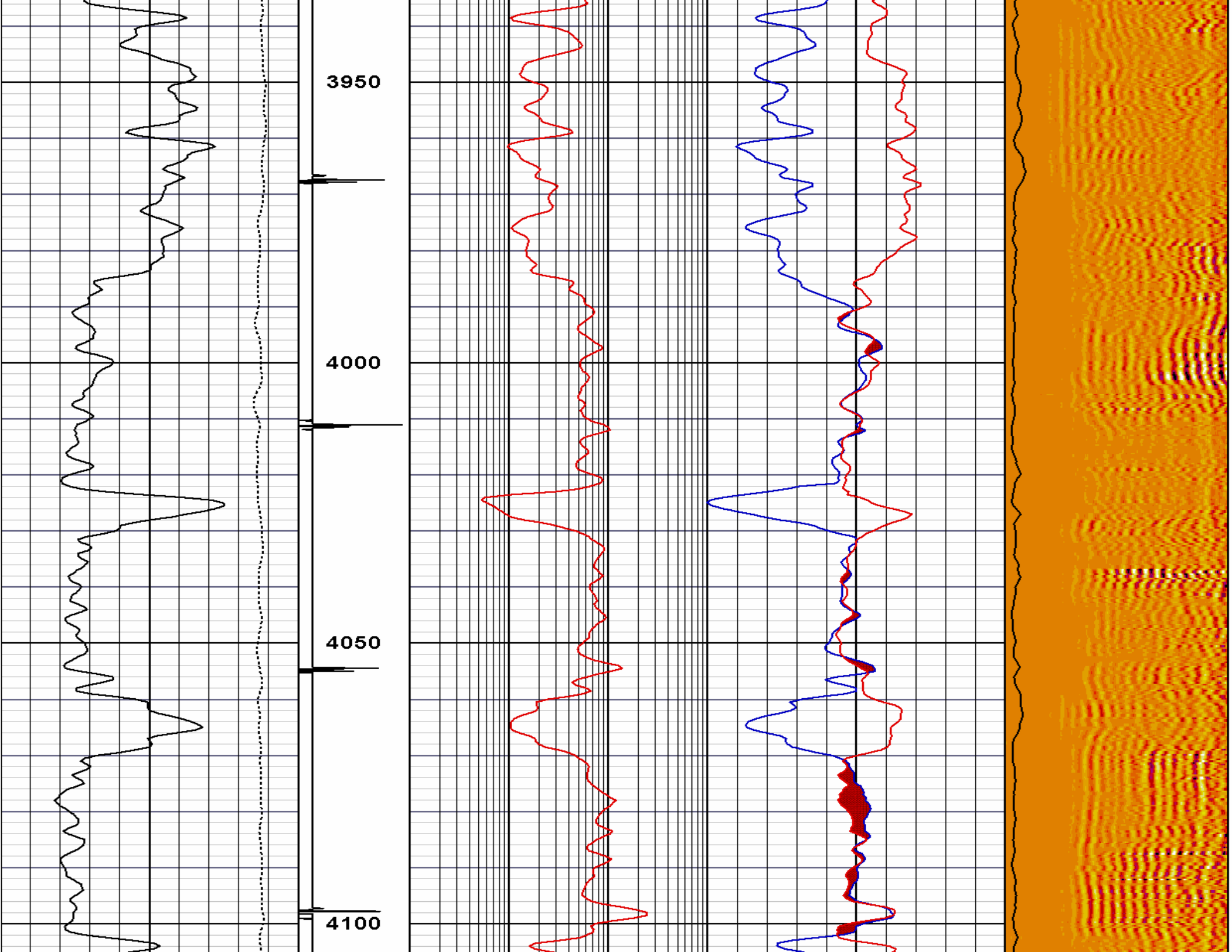
Track 2
NNILD (ohm-metre) CHI Modeled Deep Resistivity

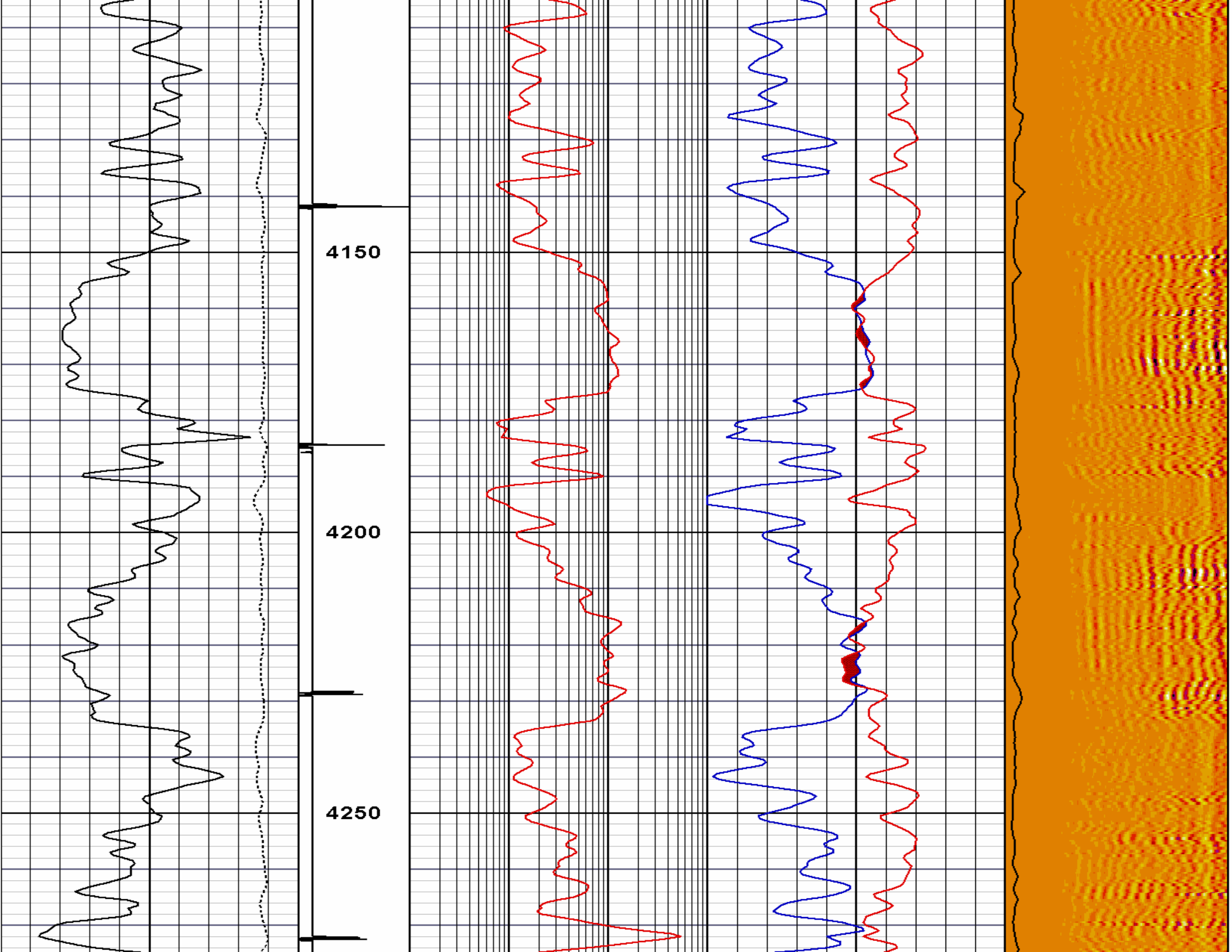
Track 3
NNDPHI (dec) CHI Modeled Density Porosity
NNNPHI (dec) CHI Modeled Neutron Porosity

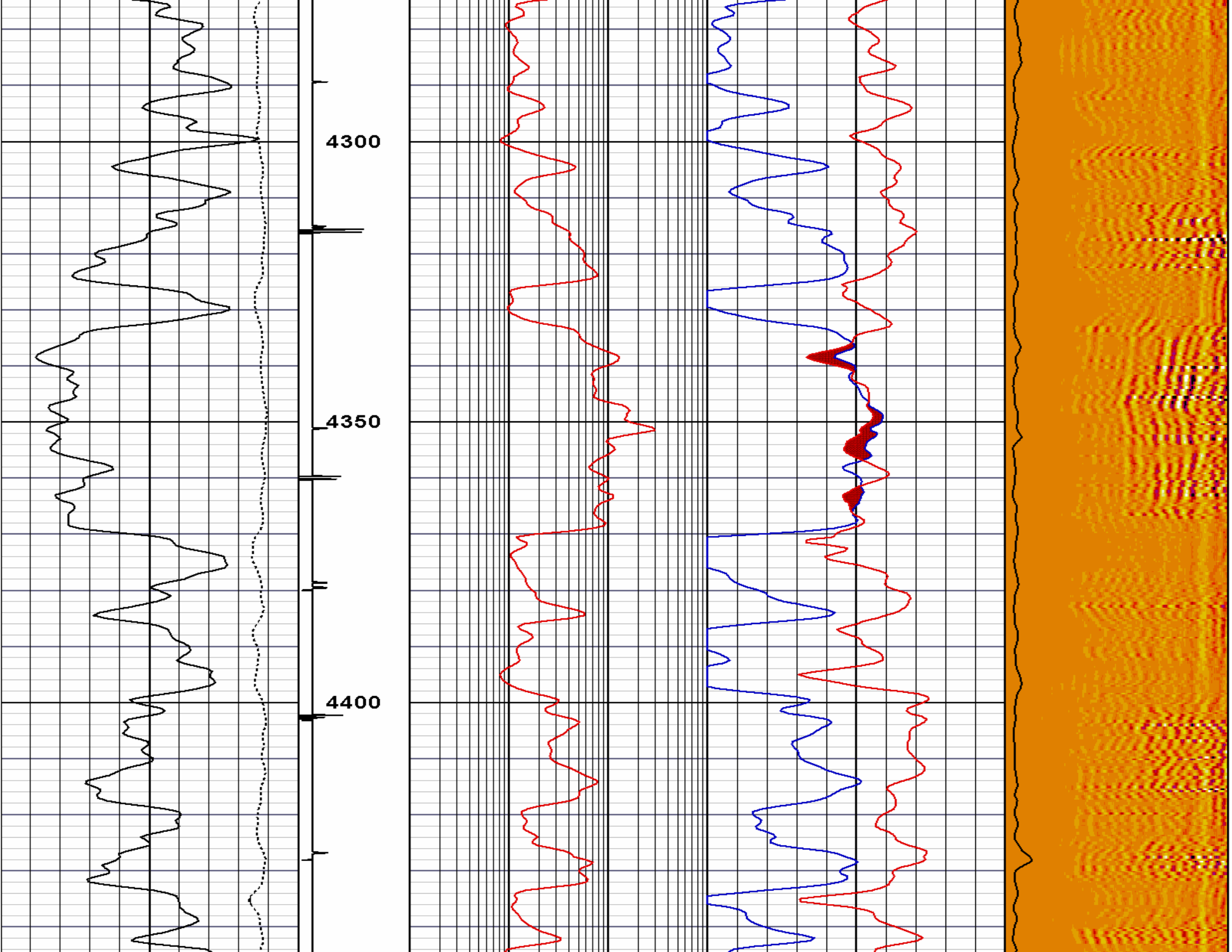
Track 4
AMP (mV) 3' CBL Amplitude
WMSG 5' CBL Waveform

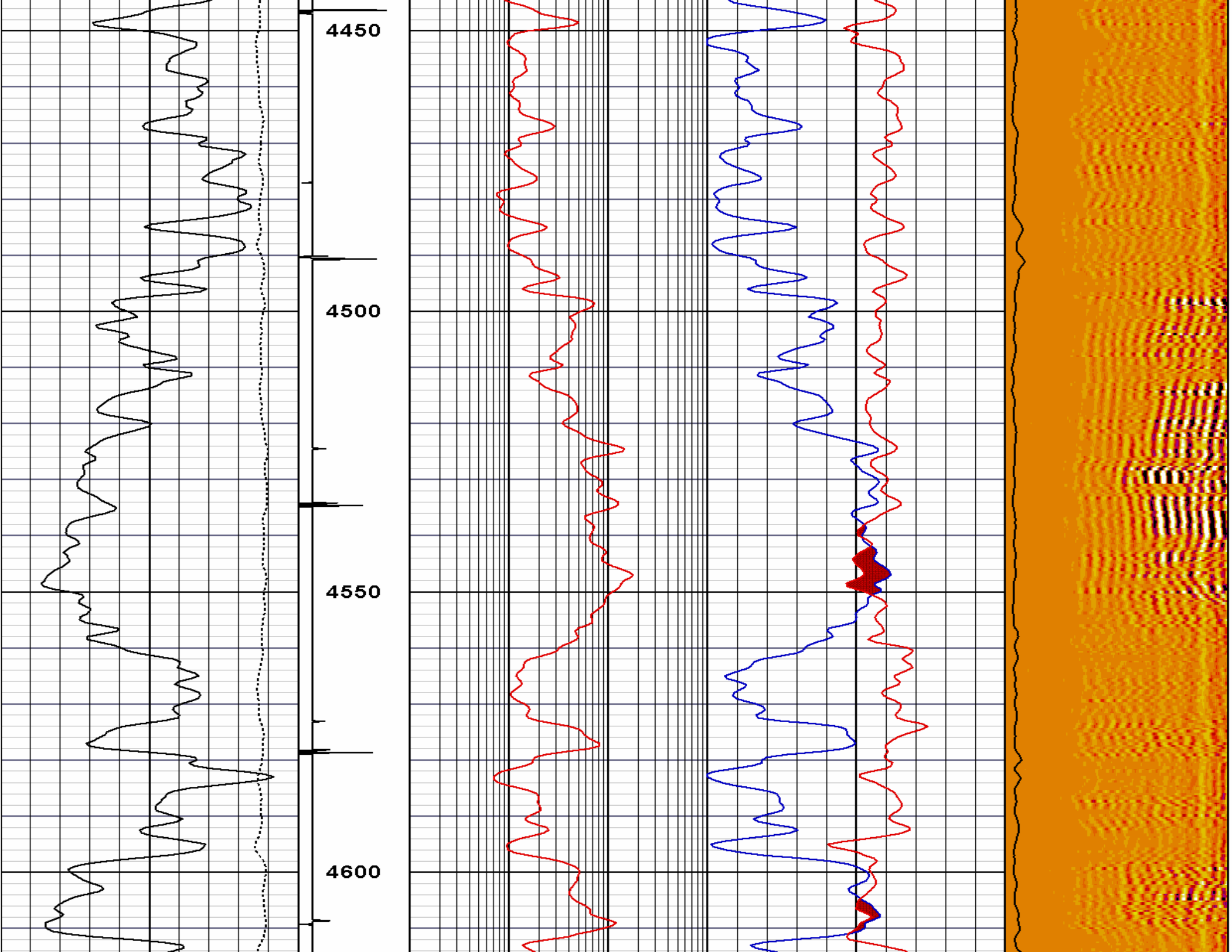


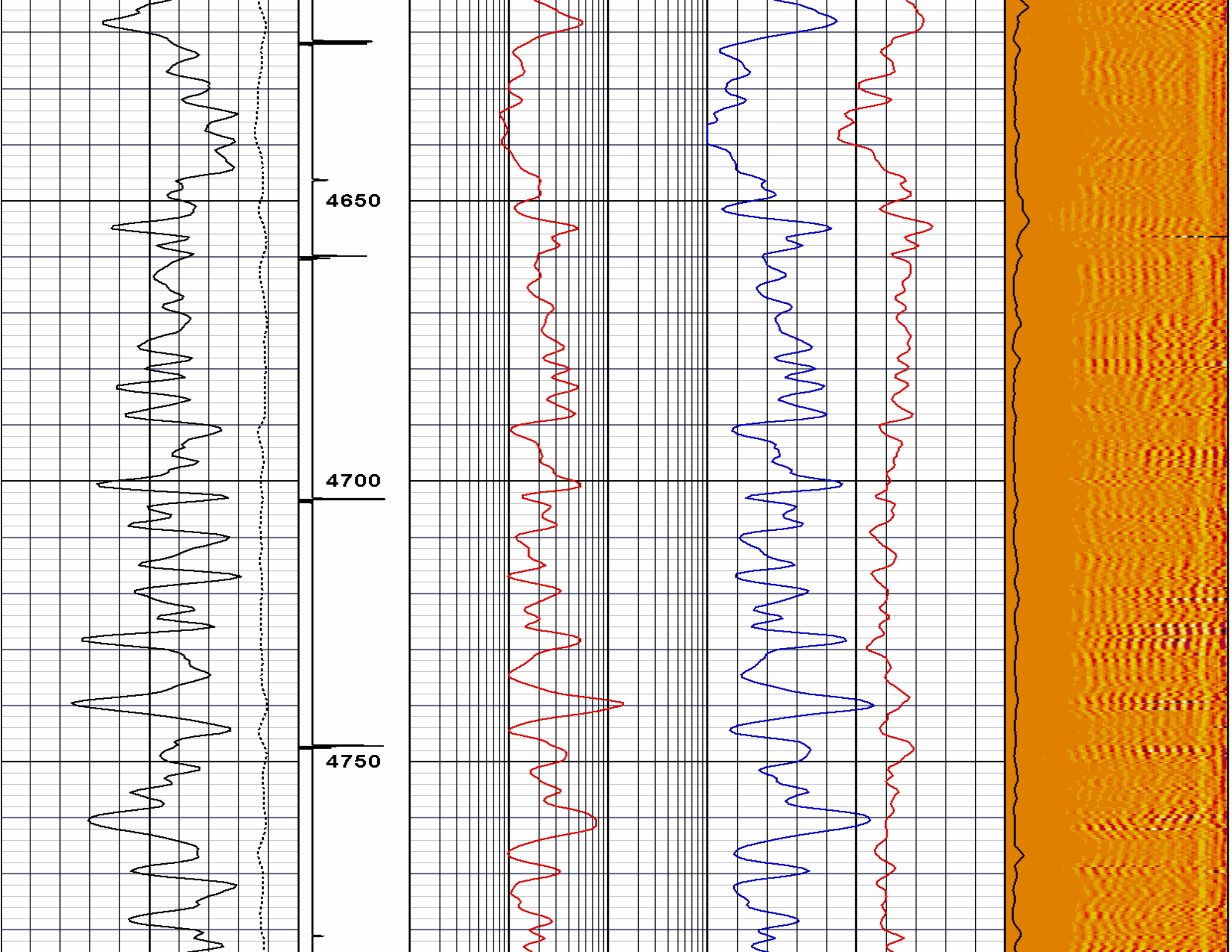


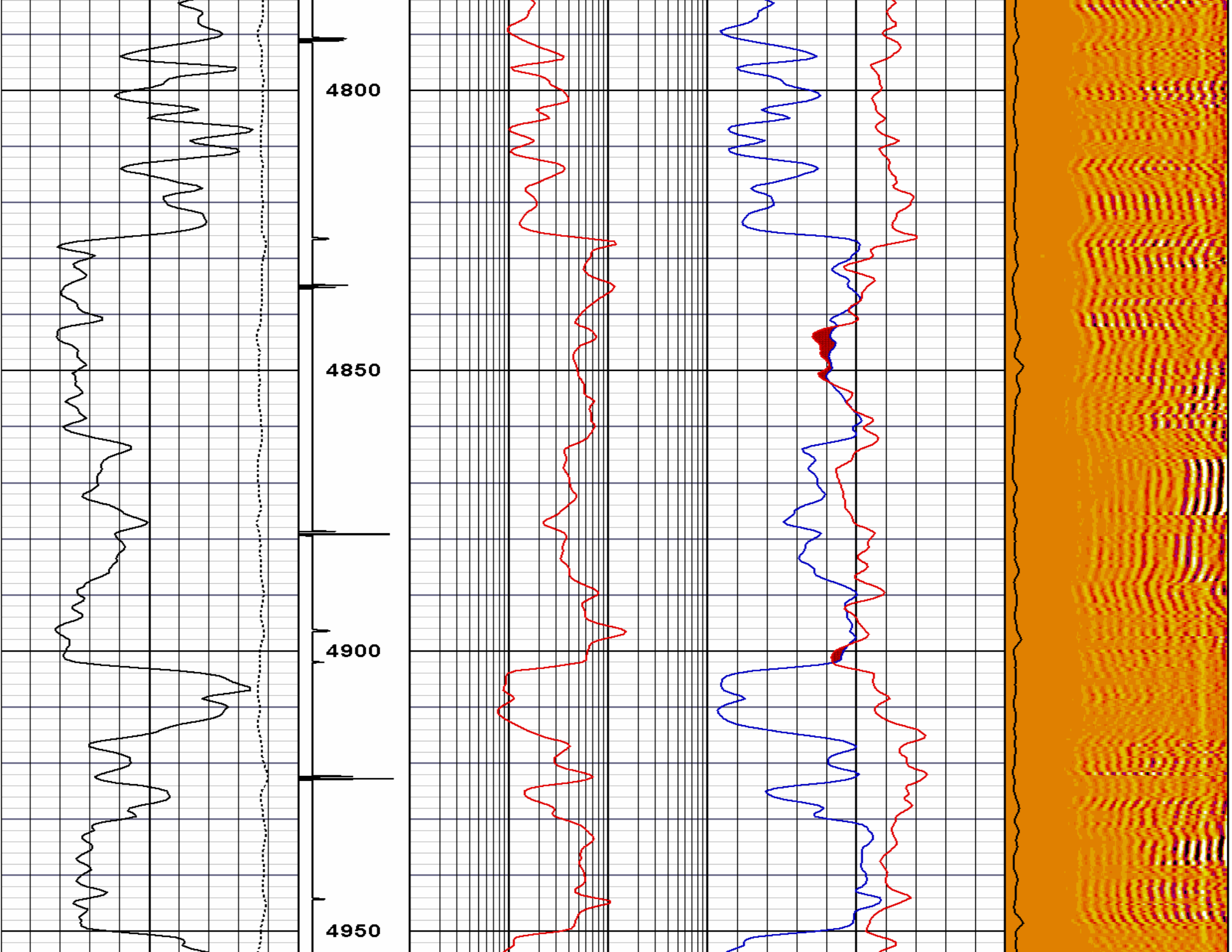


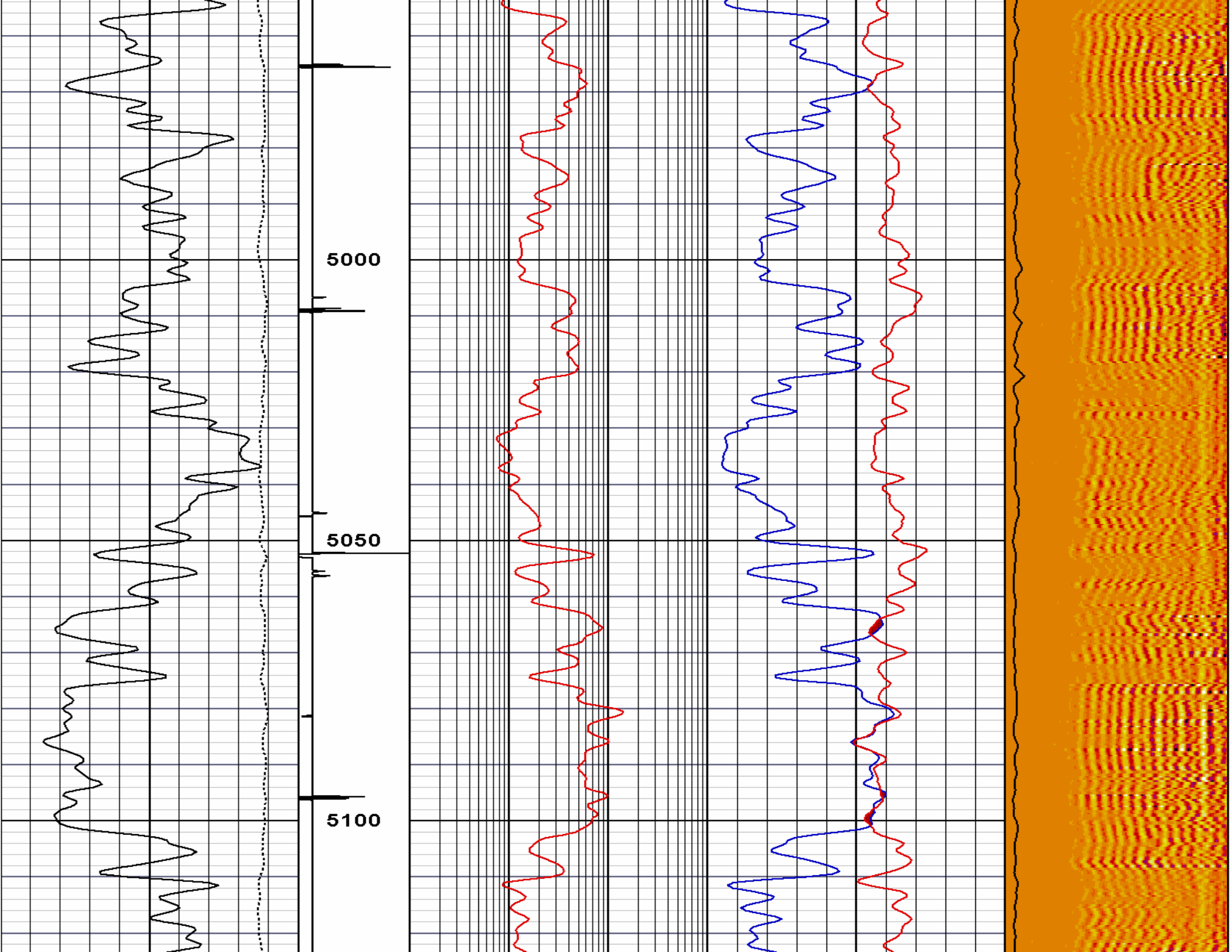


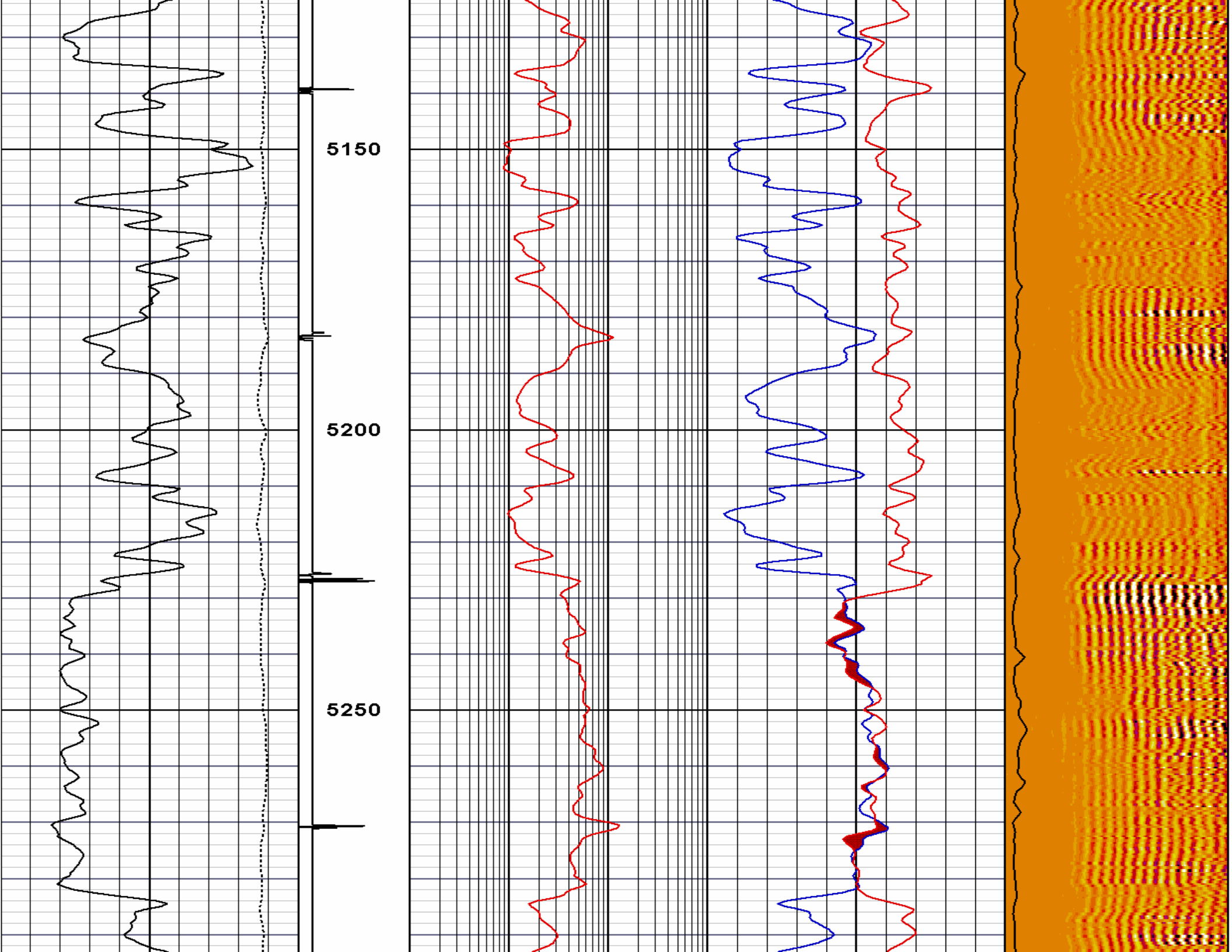


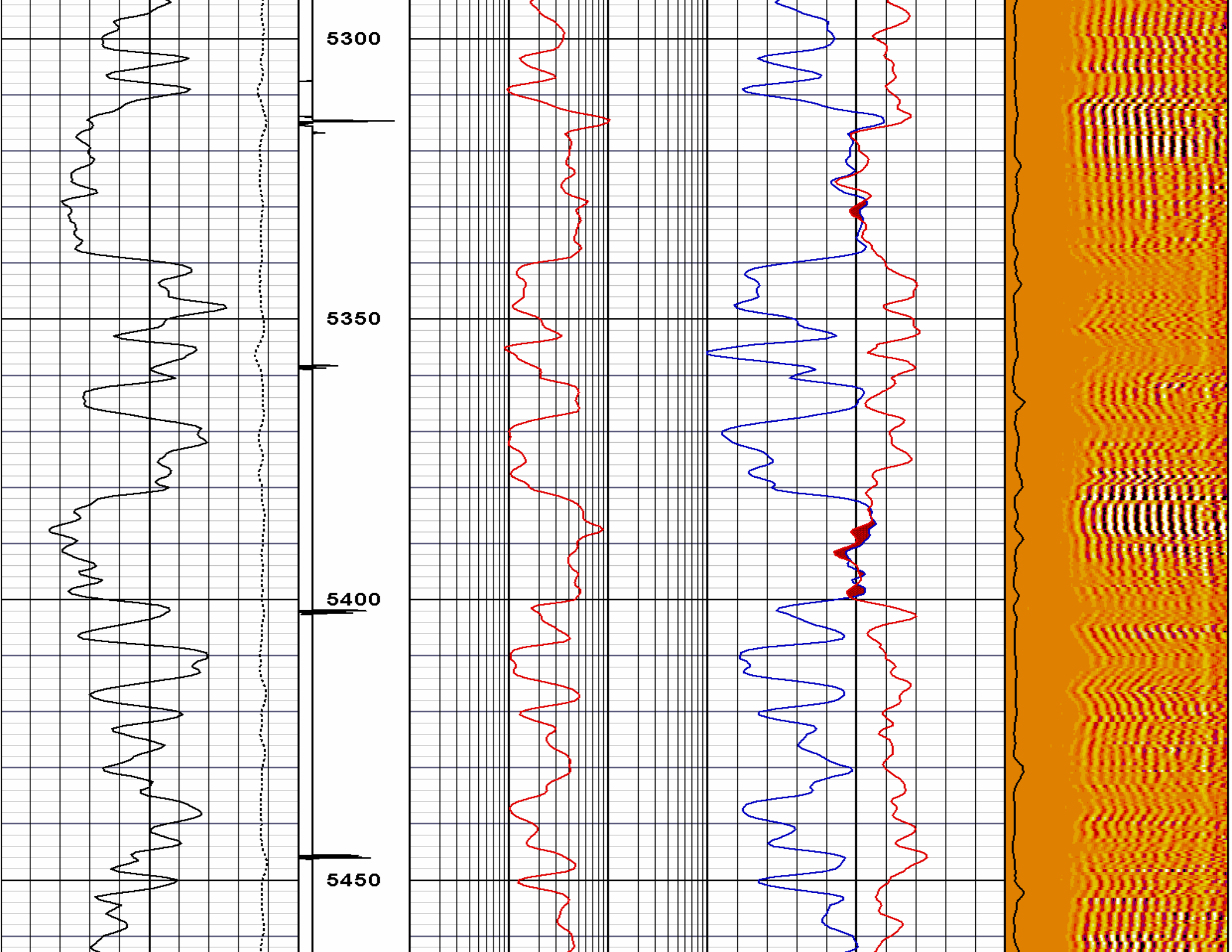


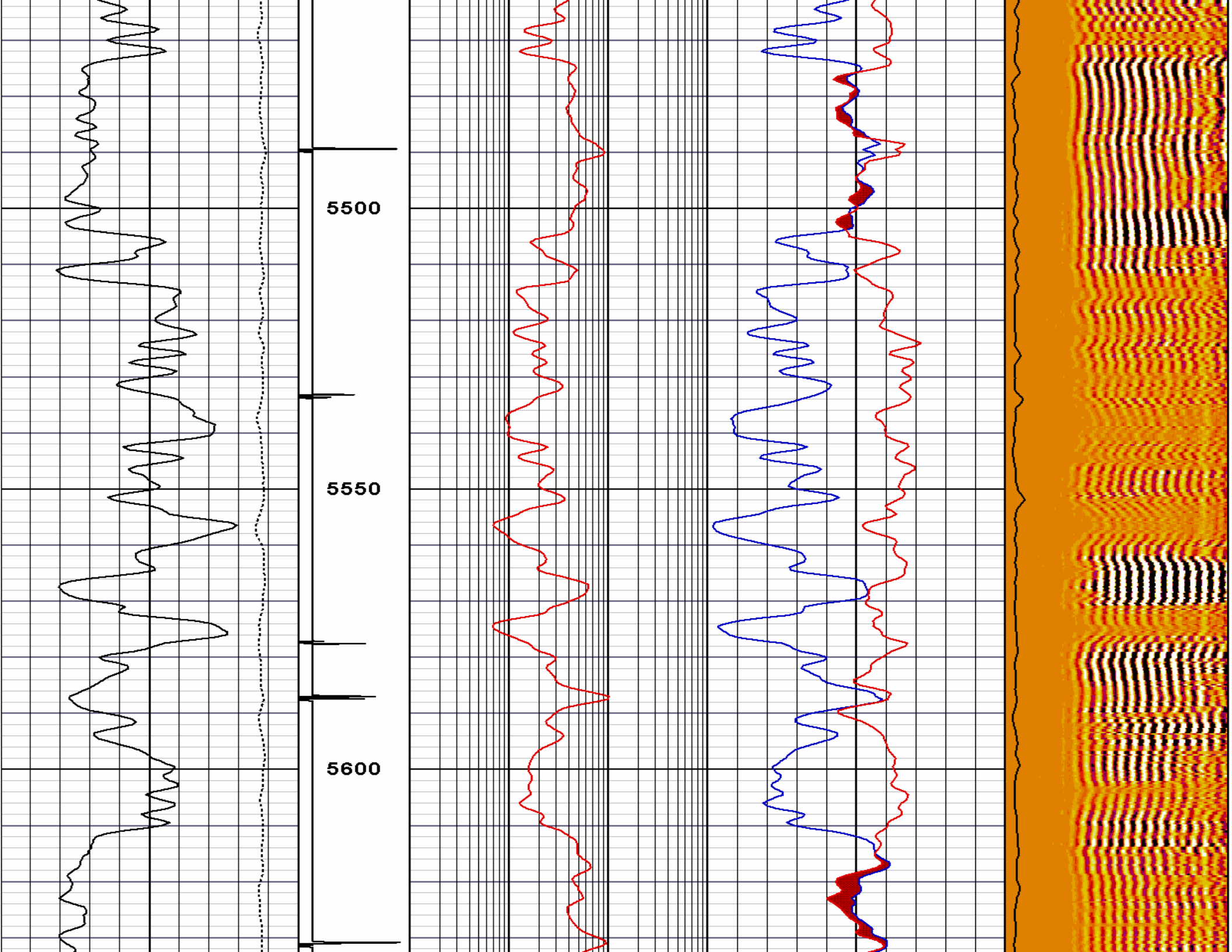


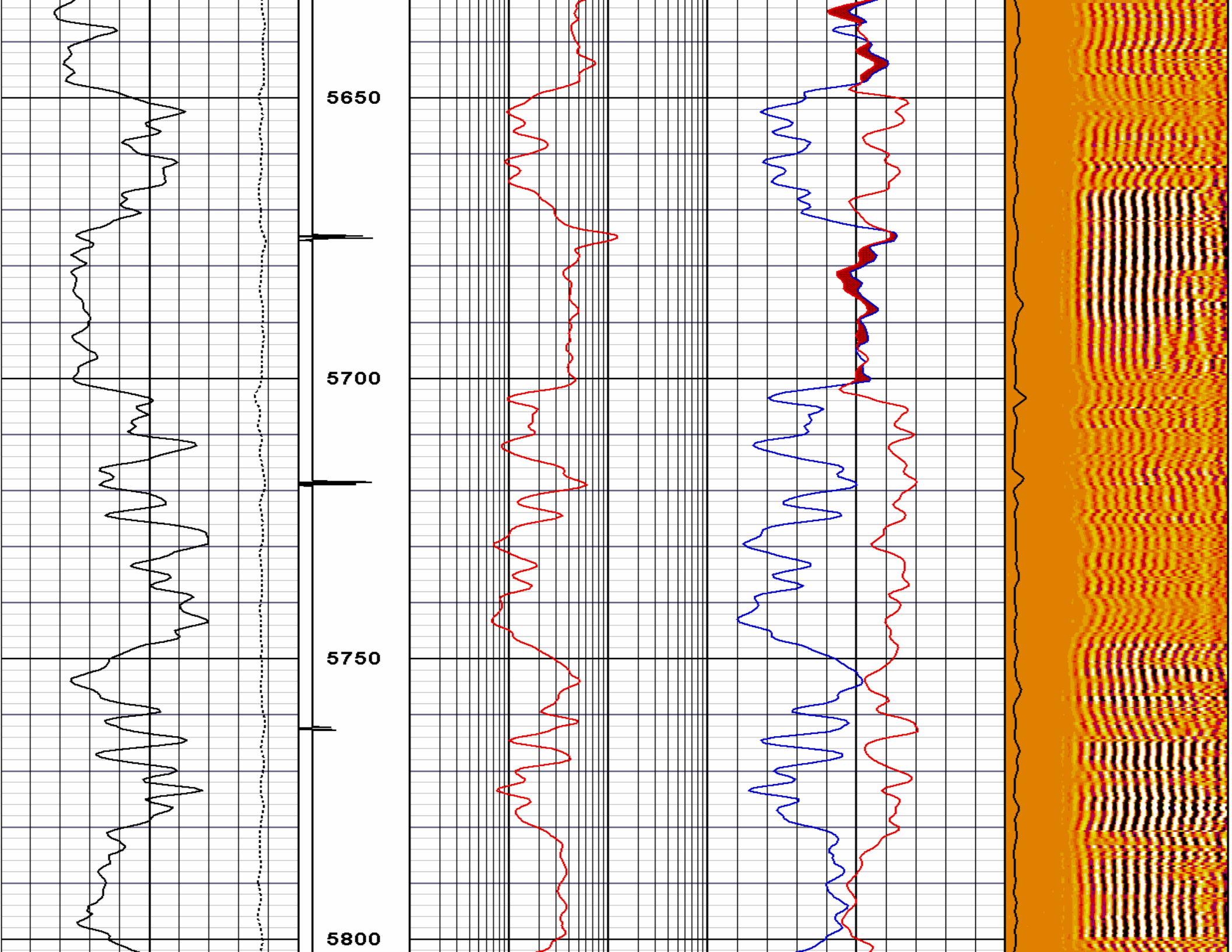


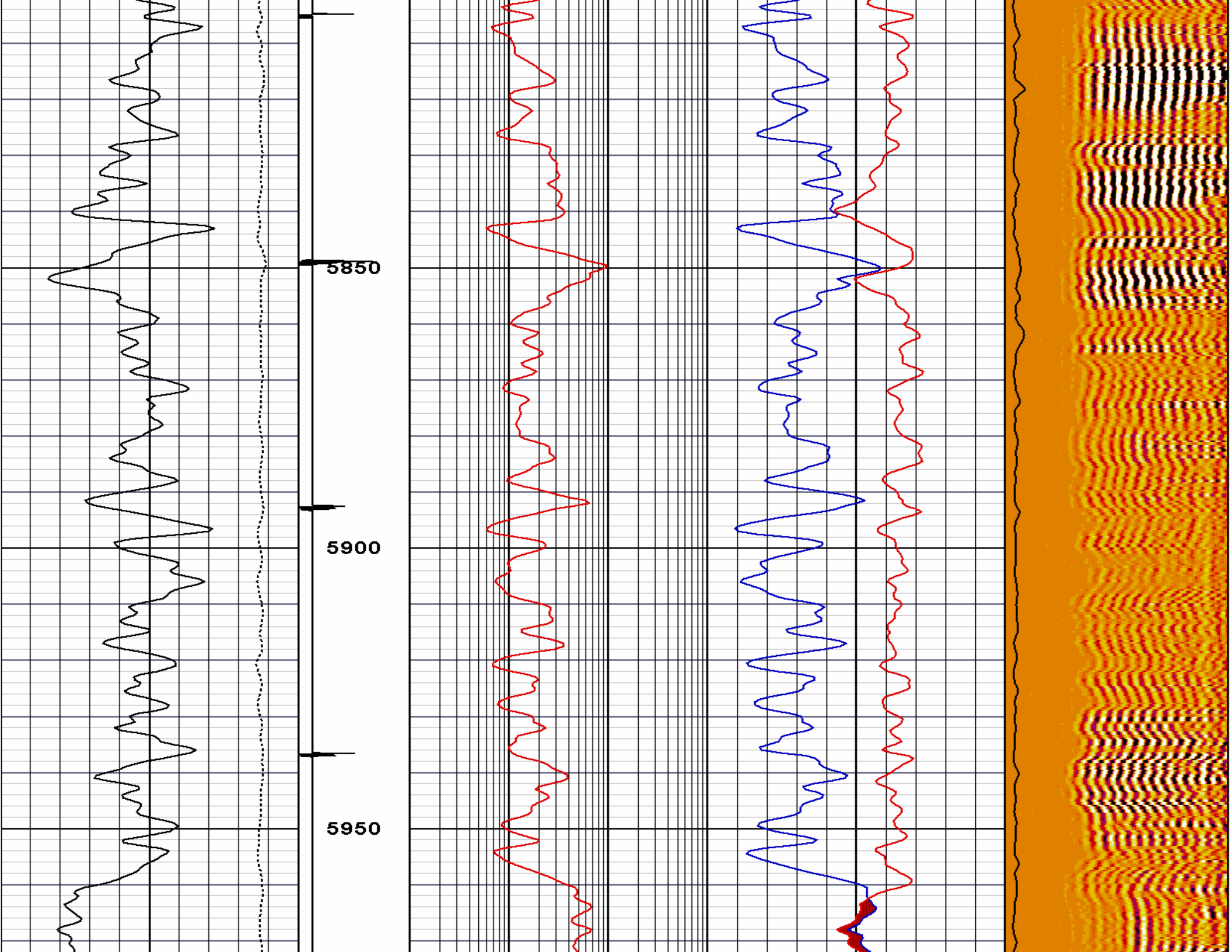


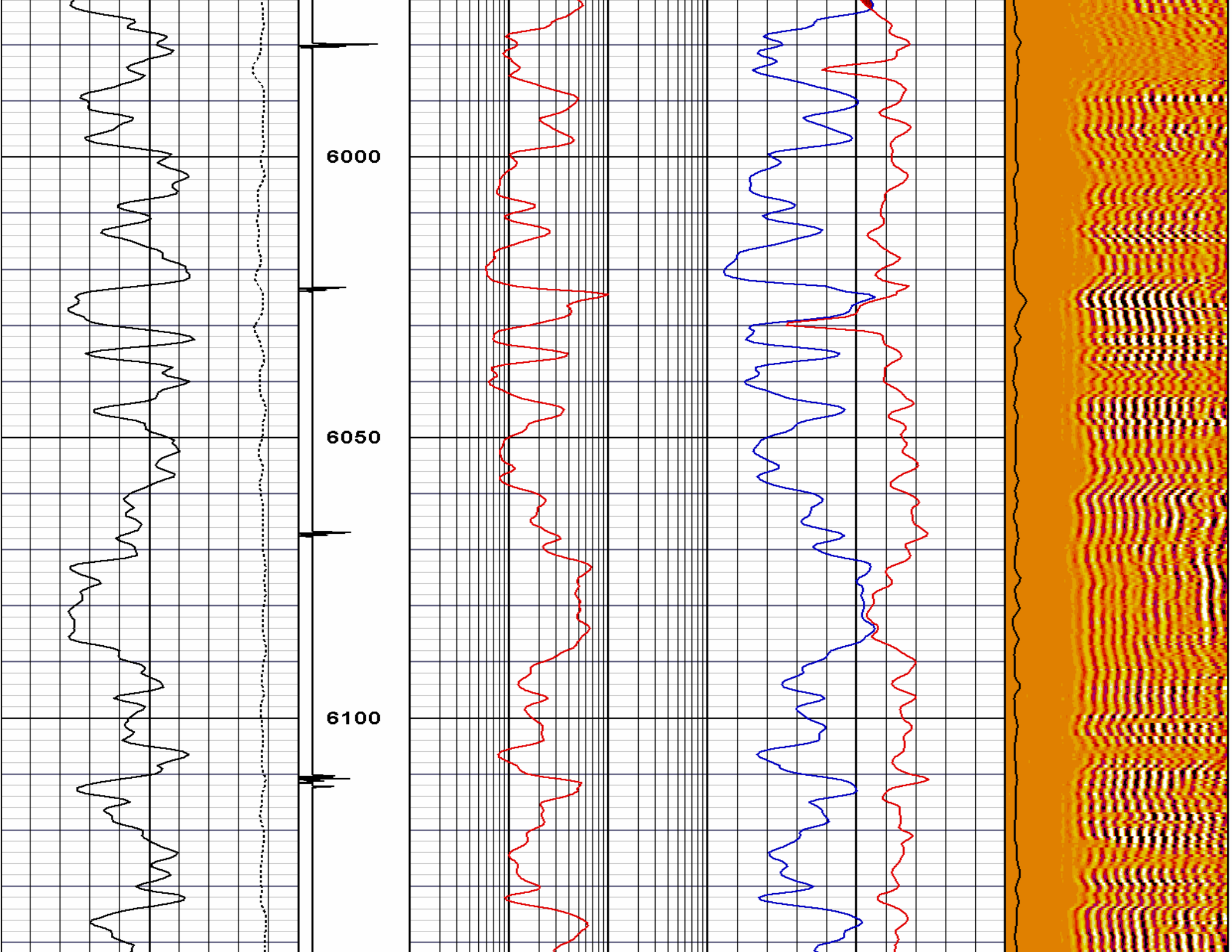


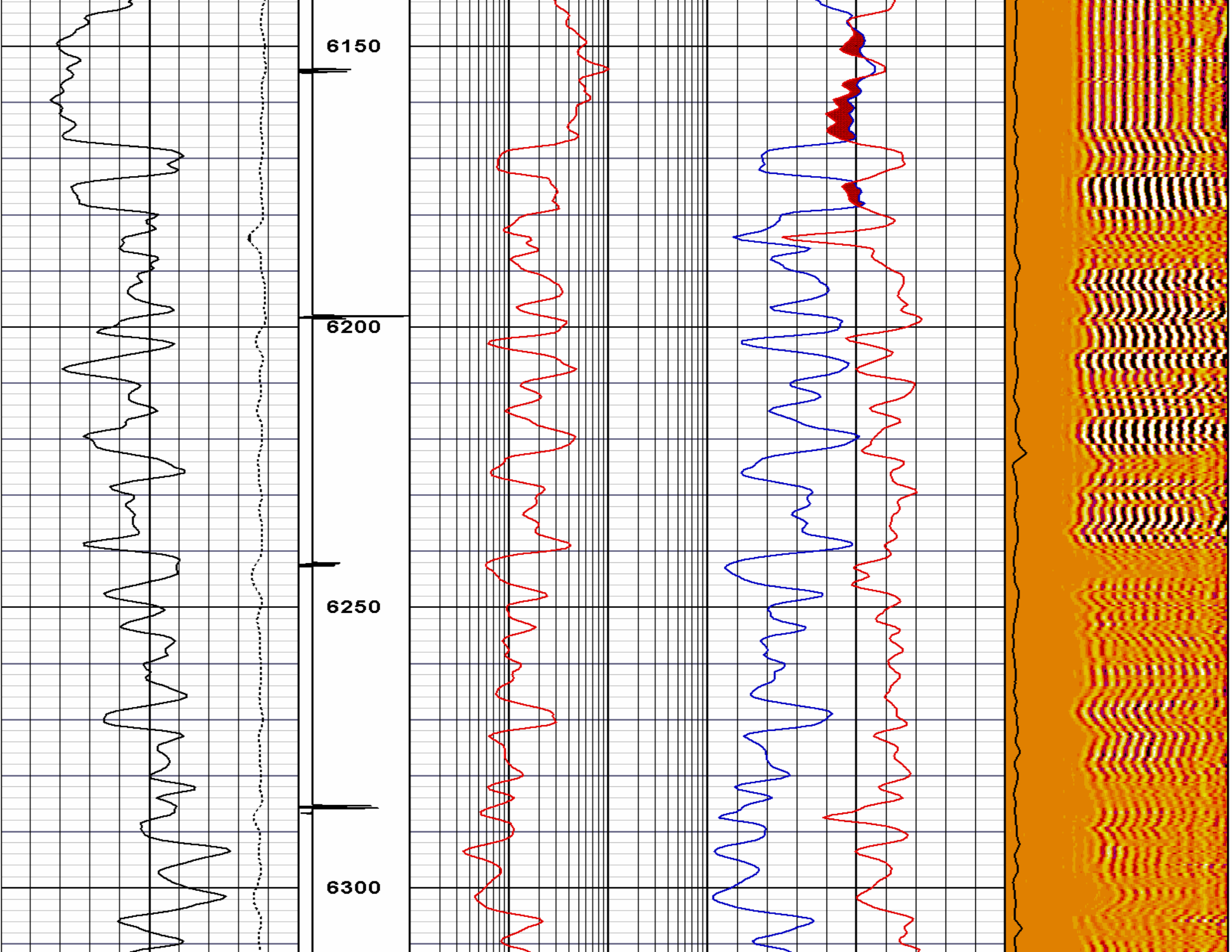


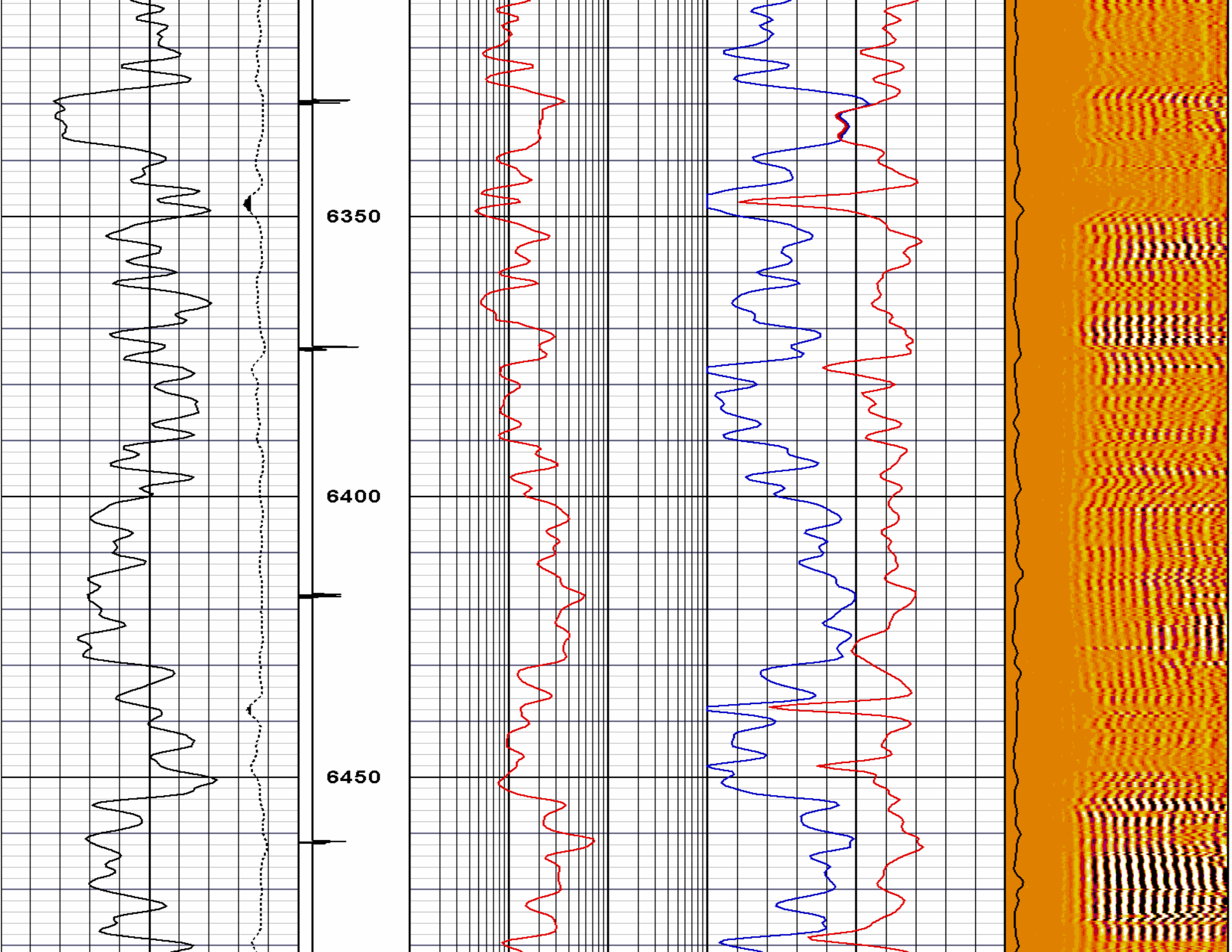


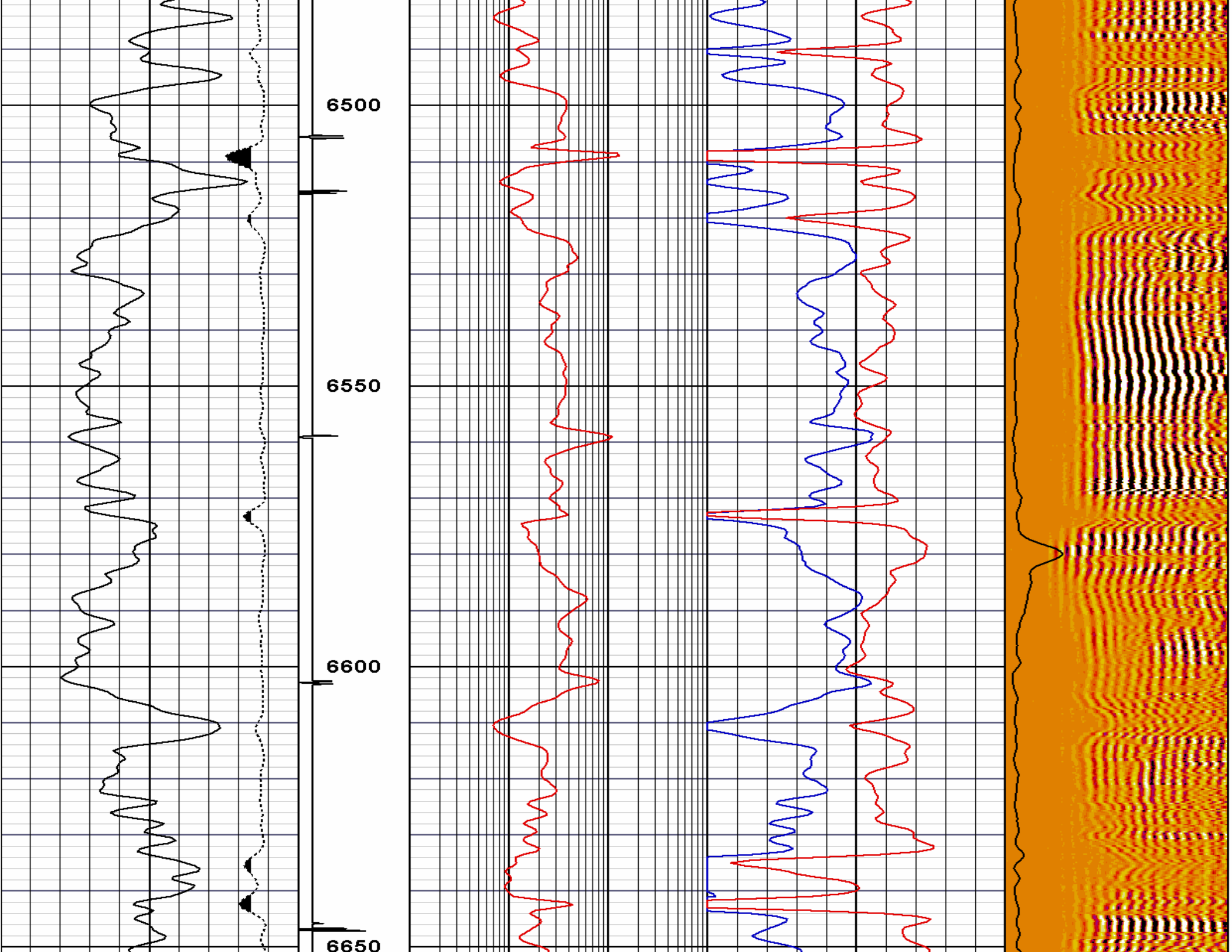


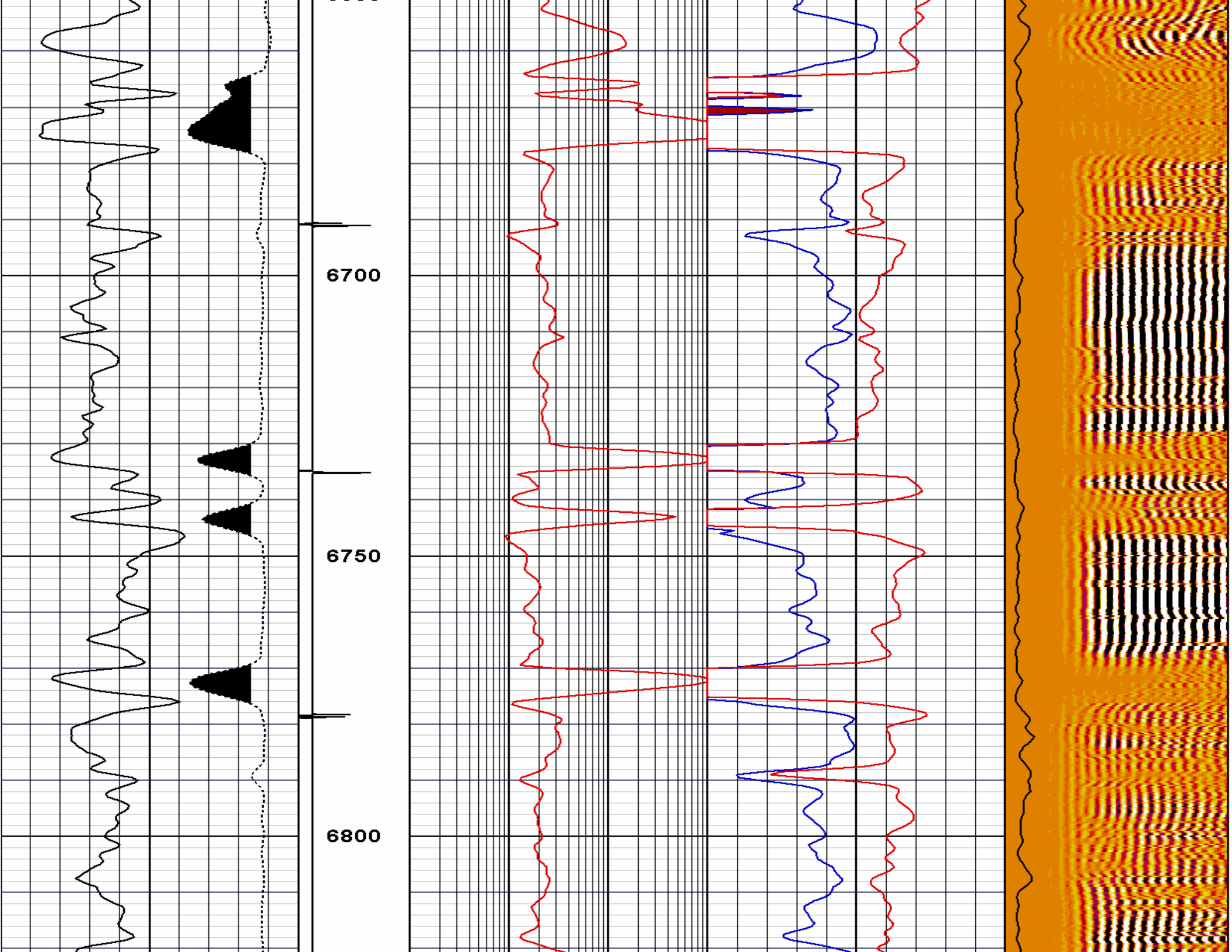


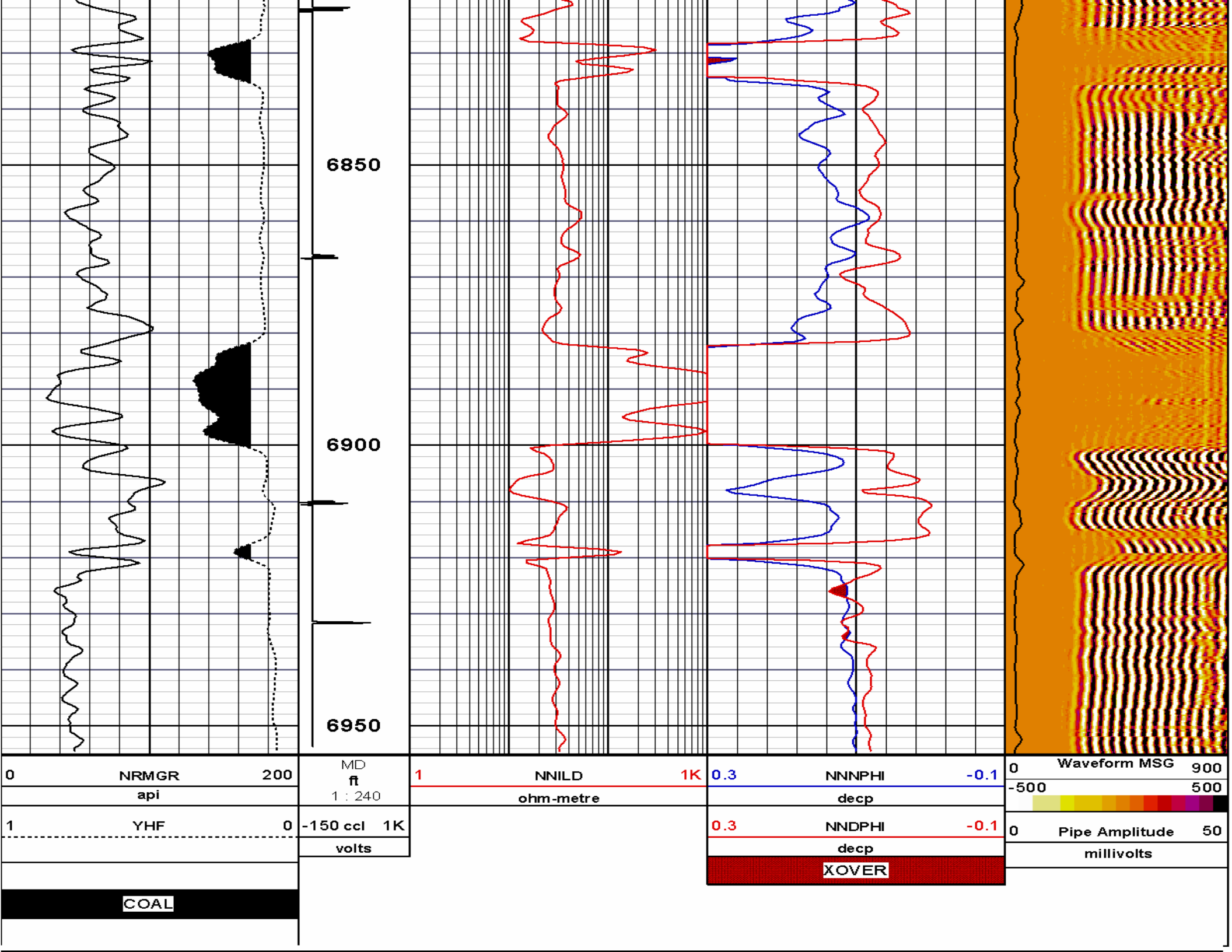












COMPANY	Ursa Operating Co.		
WELL	YATER 22B-17-07-95		
FIELD	PARACHUTE		
COUNTY	Garfield	STATE	CO
HALLIBURTON		RMTI NEURAL NETWORK CHI TRIPLE COMBO	