

Ursa Resources Group II LLC

Yater 12B-17-07-95

Capstar 321

Post Job Summary

Cement Surface Casing

Date Prepared: 06/29/2015

Job Date: 06/28/2015

Submitted by: Evan Russell – Grand Junction Cement Engineer

The Road to Excellence Starts with Safety

Sold To #: 369755	Ship To #: 3642167	Quote #:	Sales Order #: 0902504557
Customer: URSA RESOURCES GROUP II LLC	Customer Rep: NATE GILL		
Well Name: YATER	Well #: 12B-17-07-95	API/UWI #: 05-045-22784-00	
Field: PARACHUTE	City (SAP): PARACHUTE	County/Parish: GARFIELD	State: COLORADO
Legal Description: NW SW-17-7S-95W-1692FSL-1129FWL			
Contractor: CAPSTAR DRLG	Rig/Platform Name/Num: CAPSTAR 321		
Job BOM: 7521			
Well Type: DIRECTIONAL GAS			
Sales Person: HALAMERICA\HB80977	Srv Supervisor: Jesse Slaughter		

Job

Formation Name	
Formation Depth (MD)	Top Bottom
Form Type	BHST 200 degF
Job depth MD	1854ft Job Depth TVD
Water Depth	Wk Ht Above Floor 7ft
Perforation Depth (MD)	From To

Well Data

Description	New / Used	Size in	ID in	Weight lbm/ft	Thread	Grade	Top MD ft	Bottom MD ft	Top TVD ft	Bottom TVD ft
Casing		9.625	8.921	36	LTC	J-55	0	1854		0
Open Hole Section			12.25				0	1870		0

Tools and Accessories

Type	Size in	Qty	Make	Depth ft	Type	Size in	Qty	Make
Guide Shoe	9.625	1		1854	Top Plug	9.625	1	HES
Float Shoe	9.625	1			Bottom Plug	9.625		HES
Float Collar	9.625	1			SSR plug set	9.625		HES
Insert Float	9.625	1			Plug Container	9.625	1	HES
Stage Tool	9.625	1			Centralizers	9.625		HES

Miscellaneous Materials

Gelling Agt	Conc	Surfactant	Conc	Acid Type	Qty	Conc
Treatment Fld	Conc	Inhibitor	Conc	Sand Type	Size	Qty

Fluid Data

Stage/Plug #: 1										
Fluid #	Stage Type	Fluid Name	Qty	Qty UoM	Mixing Density lbm/gal	Yield ft3/sack	Mix Fluid Gal	Rate bbl/min	Total Mix Fluid Gal	
1	Water	Water	20	bbl	8.33			4		
Fluid #	Stage Type	Fluid Name	Qty	Qty UoM	Mixing Density lbm/gal	Yield ft3/sack	Mix Fluid Gal	Rate bbl/min	Total Mix Fluid Gal	
2	Lead Cement	VARICEM (TM) CEMENT	277	sack	12.3	2.46		8	14.17	

0.25 lbm		POLY-E-FLAKE (101216940)							
Fluid #	Stage Type	Fluid Name	Qty	Qty UoM	Mixing Density lbm/gal	Yield ft3/sack	Mix Fluid Gal	Rate bbl/min	Total Mix Fluid Gal
3	Tail Cement	VARICEM (TM) CEMENT	120	sack	12.8	2.18		8	12.11
0.25 lbm		POLY-E-FLAKE (101216940)							
Fluid #	Stage Type	Fluid Name	Qty	Qty UoM	Mixing Density lbm/gal	Yield ft3/sack	Mix Fluid Gal	Rate bbl/min	Total Mix Fluid Gal
4	Displacement	Displacement	110	bbl	8.33			8	
Cement Left In Pipe		Amount	47 ft		Reason		Shoe Joint		
Comment									

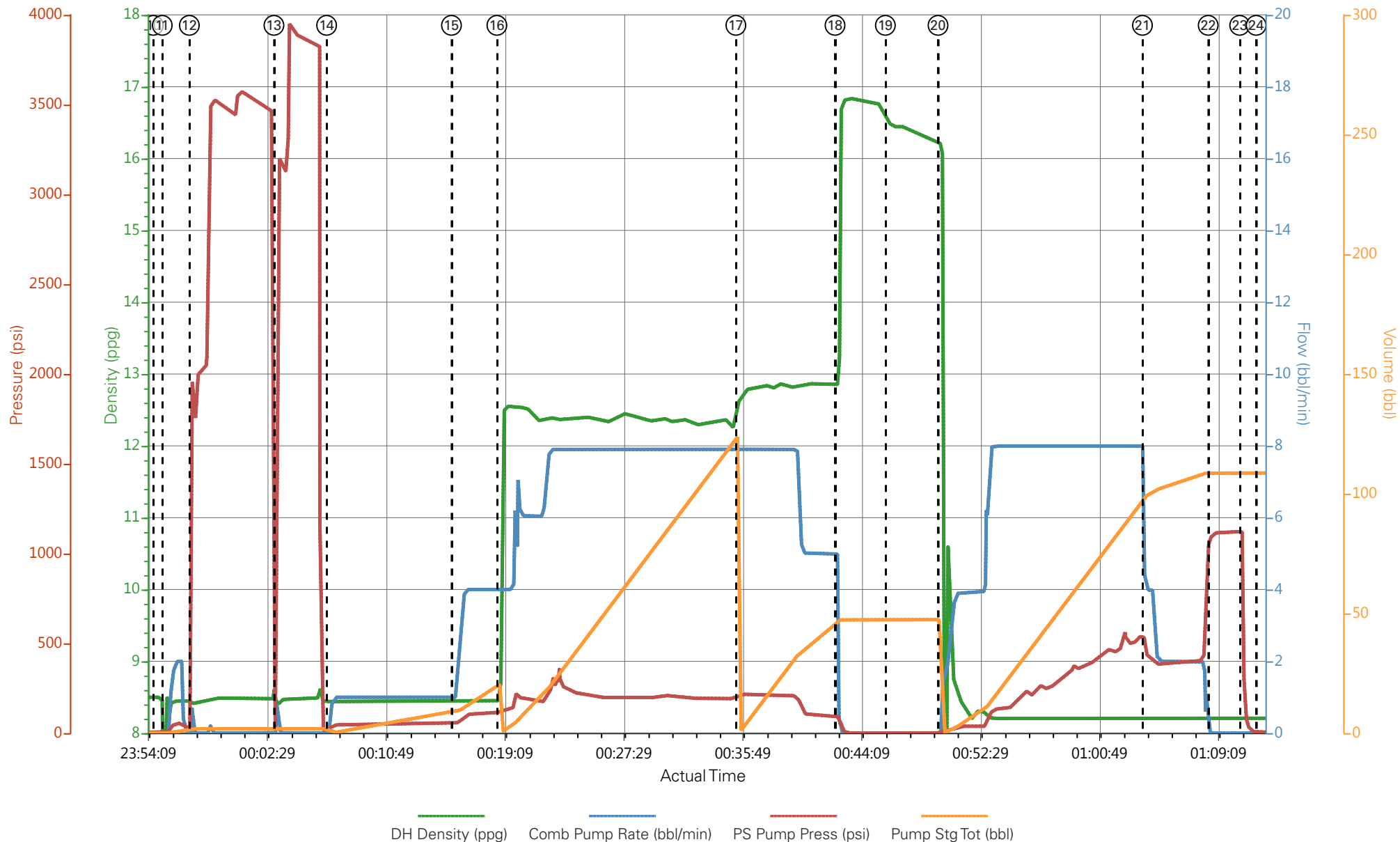
1.0 Real-Time Job Summary

1.1 Job Event Log

Type	Seq. No.	Activity	Graph Label	Date	Time	Source	DH Density (ppg)	Comb Pump Rate (bbl/min)	PS Pump Press (psi)	Pump Stg Tot (bbl)	Comments
Event	1	Call Out	Call Out	6/27/2015	14:00:00	USER					
Event	2	Pre-Convoy Safety Meeting	Pre-Convoy Safety Meeting	6/27/2015	17:20:00	USER					WITH ALL HES PERSONNEL
Event	3	Crew Leave Yard	Crew Leave Yard	6/27/2015	17:30:00	USER					
Event	4	Arrive At Loc	Arrive At Loc	6/27/2015	18:30:00	USER					RIG WAS RUNNING CASING UPON HES ARRIVAL
Event	5	Assessment Of Location Safety Meeting	Assessment Of Location Safety Meeting	6/27/2015	21:50:00	USER					WITH ALL HES PERSONNEL
Event	6	Other	Spot Equipment	6/27/2015	22:00:00	USER					
Event	7	Pre-Rig Up Safety Meeting	Pre-Rig Up Safety Meeting	6/27/2015	22:05:00	USER					WITH ALL HES PERSONNEL
Event	8	Rig-Up Equipment	Rig-Up Equipment	6/27/2015	22:10:00	USER					
Event	9	Pre-Job Safety Meeting	Pre-Job Safety Meeting	6/27/2015	23:45:00	USER					WITH ALL PERSONNEL
Event	10	Start Job	Start Job	6/27/2015	23:54:42	COM7					TD 1870 FT, TP 1854 FT, SHOE 47 FT, CSG 8 5/8 IN 32 LB/FT, HOLE 12 1/4 IN, MUD WT 9.4 PPG
Event	11	Prime Pumps	Prime Pumps	6/27/2015	23:55:19	USER	8.33	2.0	54.0	2.0	FRESH WATER
Event	12	Test Lines	Test Lines	6/27/2015	23:57:13	COM7					TESTED LINES TO 3588 PSI PRESSURE NOT HOLDING DUE TO RELEASE LINE LEAKING.
Event	13	Test Lines	Test Lines	6/28/2015	00:03:09	USER					RETESTED LINES TO 3866 PSI PRESSURE HOLDING
Event	14	Pump Spacer 1	Pump H2O Spacer	6/28/2015	00:06:50	COM7	8.33	4.0	112.0	20.0	FRESH WATER

Event	15	Check Weight	Check weight	6/28/2015	00:15:35	COM7						MUD SCALES SHOWING 12.3 PPG.
Event	16	Pump Lead Cement	Pump Lead Cement	6/28/2015	00:18:46	COM7	12.3	8.0	204.0	121.4		277 SKS AT 12.3 PPG, 2.46 FT3/SK, 14.17 GAL/SK
Event	17	Pump Tail Cement	Pump Tail Cement	6/28/2015	00:35:32	COM7	12.8	8.0	100.0	46.6		120 SKS AT 12.8 PPG, 2.18 FT3/SK, 12.11 GAL/SK
Event	18	Shutdown	Shutdown	6/28/2015	00:42:28	USER						
Event	19	Drop Top Plug	Drop Top Plug	6/28/2015	00:46:00	USER						PLUG LAUNCHED
Event	20	Pump Displacement	Pump Displacement	6/28/2015	00:49:42	COM7	8.33	8.0	540.0	110.0		FRESH WATER
Event	21	Slow Rate	Slow Rate	6/28/2015	01:04:01	USER	8.33	2.0	400.0	100.0		SLOWED RATE 10 BBLS PRIOR TO CALCULATED DISPLACEMENT.
Event	22	Bump Plug	Bump Plug	6/28/2015	01:08:38	COM7			1122.0			
Event	23	Check Floats	Check Floats	6/28/2015	01:10:50	USER						FLOATS HOLDING. HES RETURNED 1/2 BBL H2O TO PUMP.
Event	24	End Job	End Job	6/28/2015	01:12:00	COM7						PIPE WAS STATIC DURING JOB, GOOD CIRCULATION THROUGHOUT JOB, HES RETURNED 20 BBLS CEMENT TO SURFACE. USED 60 SUGAR FOR JOB.
Event	25	Pre-Rig Down Safety Meeting	Pre-Rig Down Safety Meeting	6/28/2015	01:15:00	USER						WITH ALL HES PERSONNEL
Event	26	Rig-Down Equipment	Rig-Down Equipment	6/28/2015	01:20:00	USER						
Event	27	Pre-Convoy Safety Meeting	Pre-Convoy Safety Meeting	6/28/2015	02:20:00	USER						WITH ALL HES PERSONNEL
Event	28	Crew Leave Location	Crew Leave Location	6/28/2015	02:30:00	USER						
Event	29	Comment	Comment	6/28/2015	02:31:00	USER						THANK YOU FOR USING HALLIBURTON CEMENT DEPARTMENT. JESSE SLAUGHTER AND CREW

URSA - YATER 12B-17-07-95 - SURFACE



- | | | | | | | | |
|-----------------------------|-------------------|---|-----------------------------|--------------------------|---------------|-------------------|---|
| ① Call Out | ③ Crew Leave Yard | ⑤ Assessment Of Location Safety Meeting | ⑦ Pre-Rig Up Safety Meeting | ⑨ Pre-Job Safety Meeting | ⑪ Prime Pumps | ⑬ Test Lines | ⑮ |
| ② Pre-Convoy Safety Meeting | ④ Arrive At Loc | ⑥ Spot Equipment | ⑧ Rig-Up Equipment | ⑩ Start Job | ⑫ Test Lines | ⑭ Pump H2O Spacer | ⑯ |

▼ **HALLIBURTON** | iCem® Service

Created: 2015-06-27 18:52:32, Version: 4.1.107

Edit

Customer: URSA RESOURCES GROUP

Job Date: 6/27/2015 11:03:16 PM

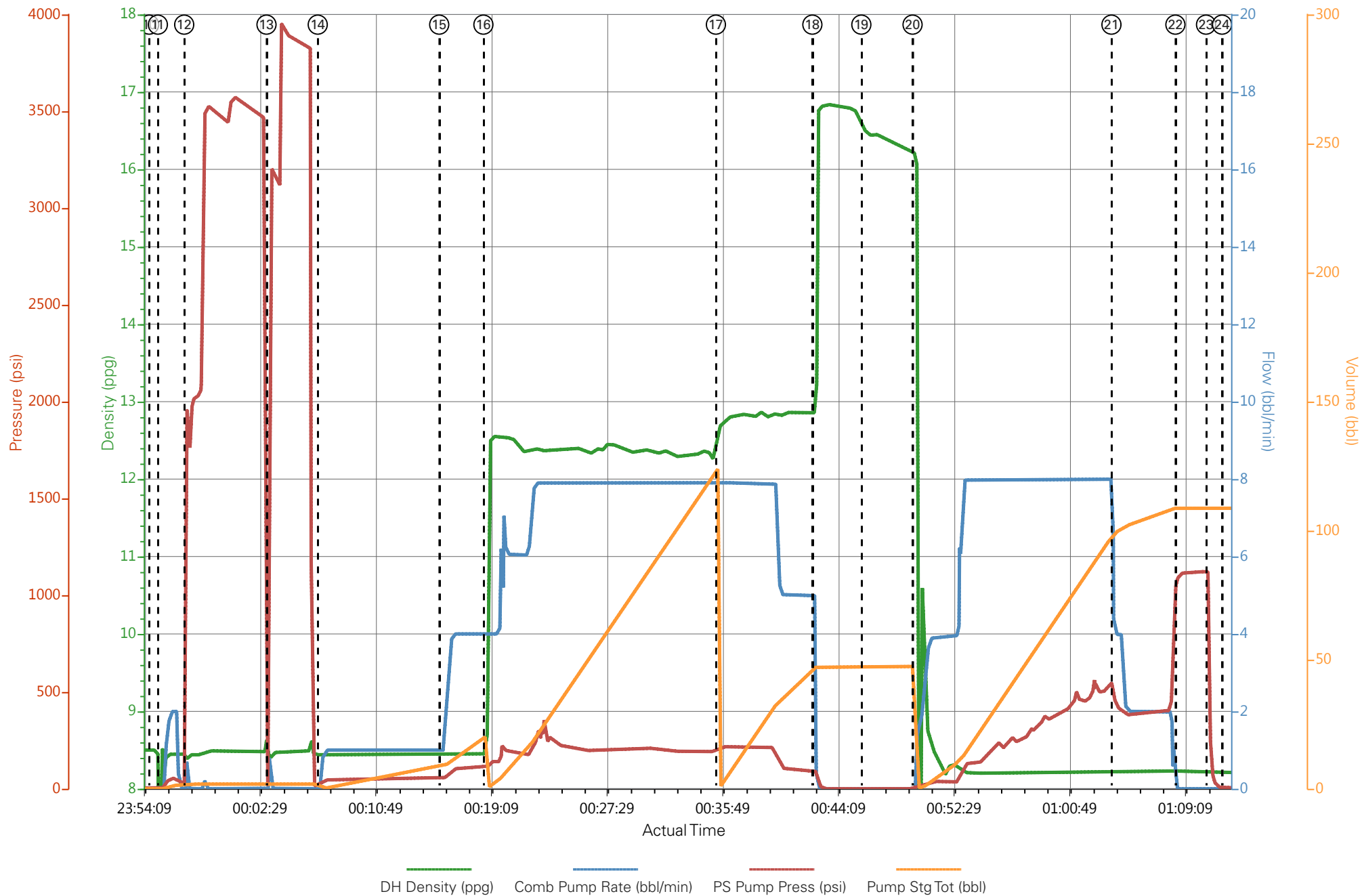
Well: YATER 12B-17-07-95

Representative: NATE GILL

Sales Order #: 902504557

Elite #1: JESSE SLAUGHTER / DIRK
BRENNECKE

URSA - YATER 12B-17-07-95 - SURFACE



HALLIBURTON

Water Analysis Report

Company: URSA

Submitted by: JESSE SLAUGHTER

Attention: LAB

Lease YATER

Well # 12B-17-07-95

Date: 6/27/2015

Date Rec.:

S.O.# 902504557

Job Type: SURFACE

Specific Gravity	<i>MAX</i>	1
pH	<i>8</i>	6
Potassium (K)	<i>5000</i>	250 Mg / L
Calcium (Ca)	<i>500</i>	120 Mg / L
Iron (FE2)	<i>300</i>	0 Mg / L
Chlorides (Cl)	<i>3000</i>	0 Mg / L
Sulfates (SO ₄)	<i>1500</i>	UNDER 200 Mg / L
Chlorine (Cl ₂)		0 Mg / L
Temp	<i>40-80</i>	70 Deg
Total Dissolved Solids		200 Mg / L

Respectfully: JESSE SLAUGHTER

Title: CEMENTING SUPERVISOR

Location: Grand Junction, CO

NOTICE:

This report is limited to the described sample tested. Any person using or relying on this report agrees that Halliburton shall not be liable for any loss or damage whether due to act or omission resulting from such report or its