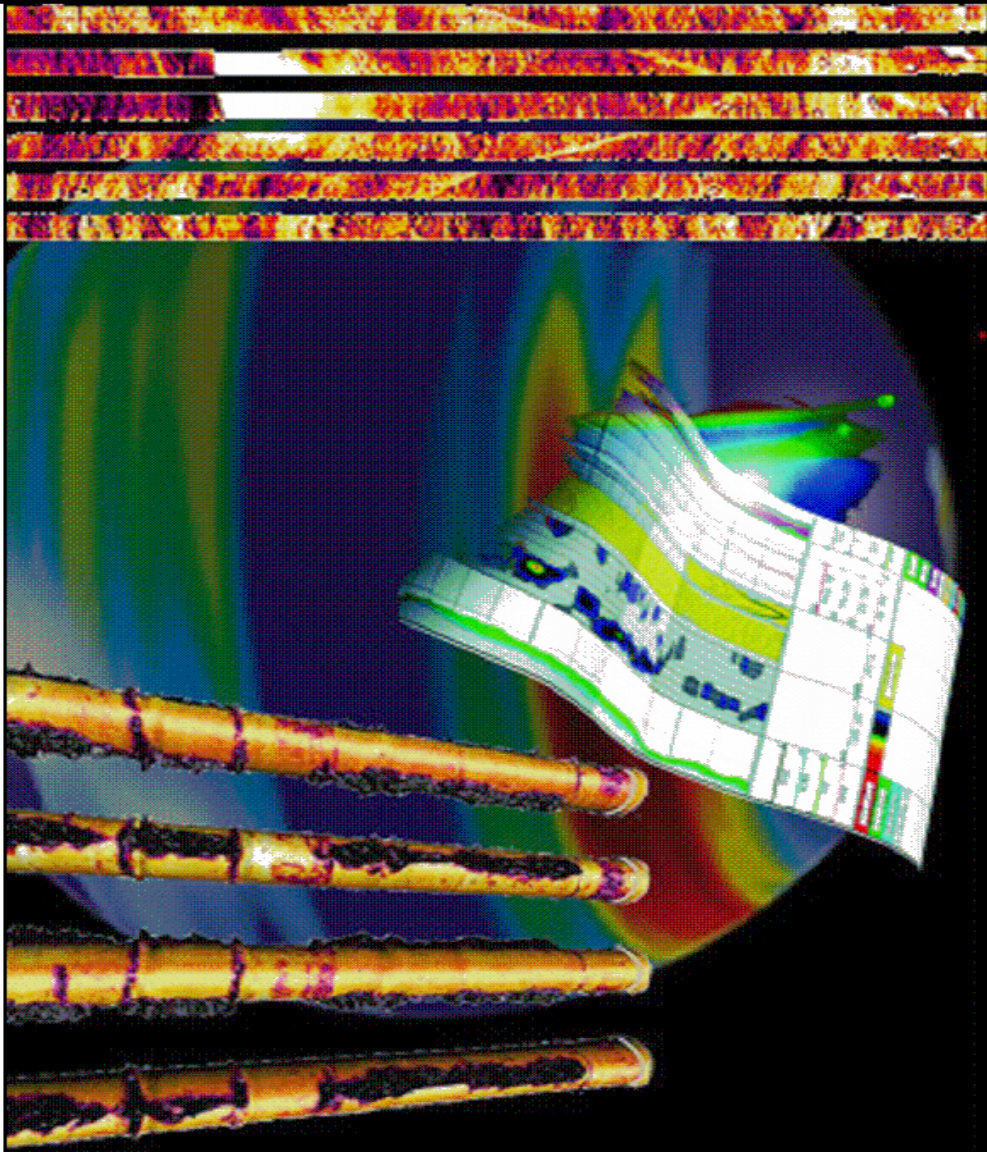


# HALLIBURTON



## RMTI

### NUERAL NETWORK CHI TRIPLE COMBO

COMPANY URSA OPERATING CO., LLC.

WELL YATER 12B-17-07-95

FIELD/BLOCK/PARACHUTE

COUNTY GARFIELD STATE CO

Location Elev.: K.B. 5536.0 ft

SHL: 1692' FSL & 1129' FWL

D.F.

G.L. 5519.0 ft

Date Processed 09/04/2015 Processed At DENVER FRS

Interval Processed 3708-7020' Processed By Adam Bobay

Fold here

Service Ticket No.: 902694726

PGM Version:

Logs Processed: CHI

Date Logged: 08/30/2015

Type Fluid In Hole: WATER

#### DIRECTIONAL INFORMATION

Maximum Deviation

@

KOP

@

Remarks: HES CEMENT BOND LOG CORRELATED WITH 17' KB

LOG INTERVALS PER CUSTOMER REQUEST

CBL RUN IN 4.5 IN CASING 11.5#

TRAINING WELL: YATER 12D-17-07-95

NNDPHI COMPUTED FROM NNRHOB USING 2.68 g/cc MATRIX DENSITY AND 1.0 g/cc FLUID DENSITY

THANK YOU FOR CHOOSING HALLIBURTON ENERGY SERVICES.

HALLIBURTON DOES NOT GUARANTEE THE ACCURACY OF ANY INTERPRETATION OF THE LOG DATA, CONVERSION OF LOG DATA TO PHYSICAL ROCK PARAMETERS OR RECOMMENDATIONS WHICH MAY BE GIVEN BY HALLIBURTON PERSONNEL OR WHICH APPEAR ON THE LOG OR IN ANY OTHER FORM. ANY USER OF SUCH DATA, INTERPRETATIONS, CONVERSIONS, OR RECOMMENDATIONS AGREES THAT HALLIBURTON IS NOT RESPONSIBLE EXCEPT WHERE DUE TO GROSS NEGLIGENCE OR WILLFUL MISCONDUCT, FOR ANY LOSS, DAMAGES, OR EXPENSES RESULTING FROM THE USE THEREOF.

HALLIBURTON

CHI MODELED TRIPLE COMBO

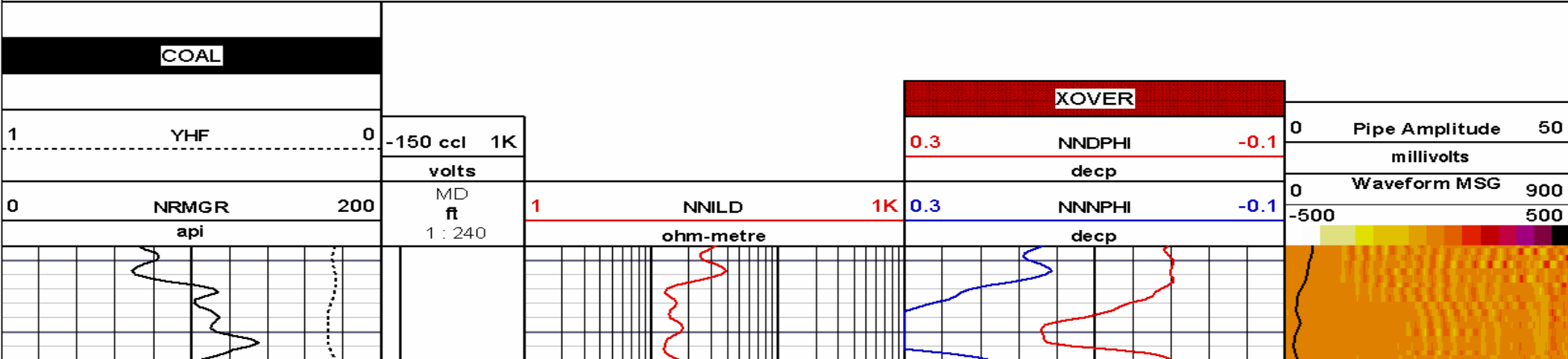
Track 1  
YHF Hydrogen Yield  
NRMGR (api) Normalized Gamma Ray

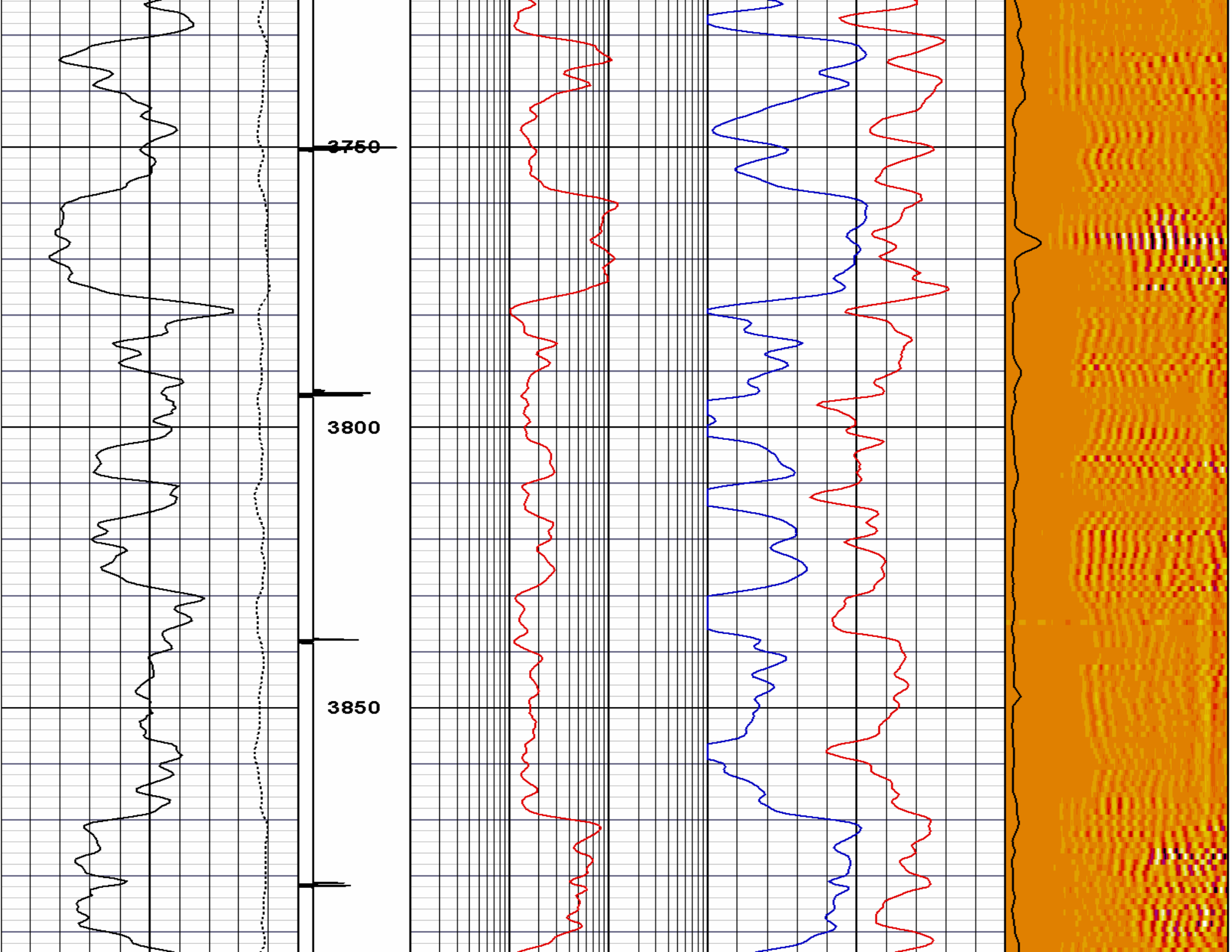
Depth Track  
DEPT (ft) Depth  
CCL (V) Collar Locator

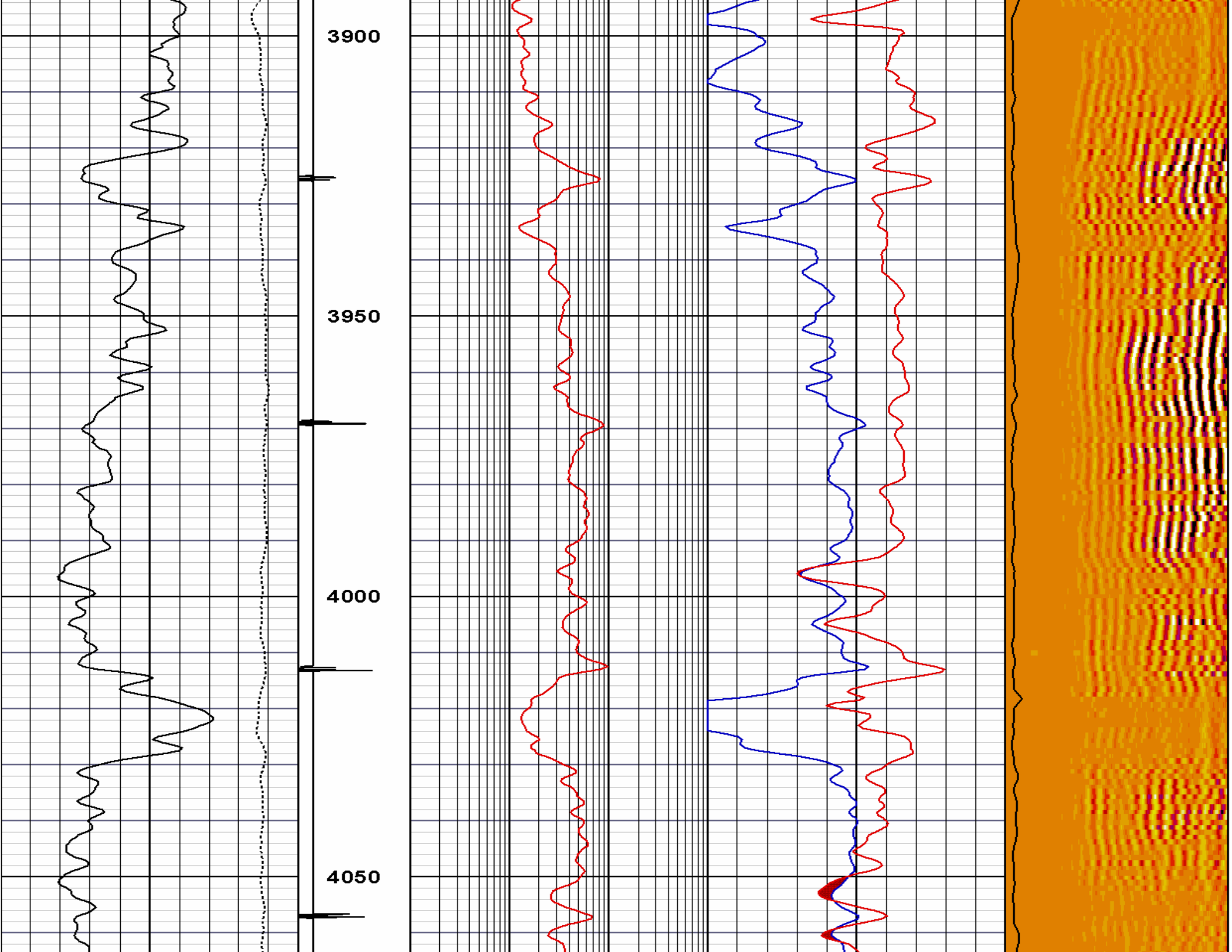
Track 2  
NNILD (ohm-metre) CHI Modeled Deep Resistivity

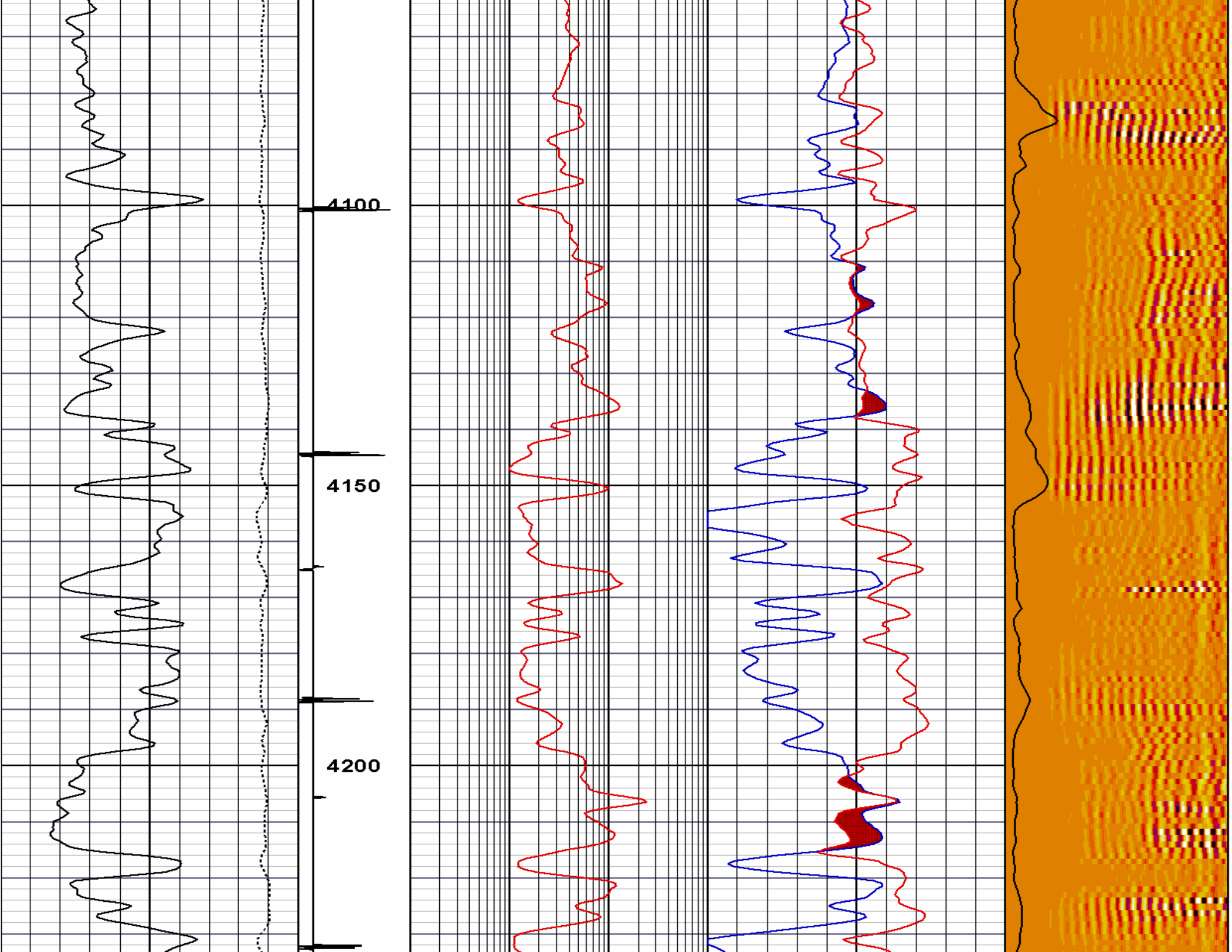
Track 3  
NNDPHI (dec) CHI Modeled Density Porosity  
NNNPHI (dec) CHI Modeled Neutron Porosity

Track 4  
AMP (mV) 3' CBL Amplitude  
WMSG 5' CBL Waveform

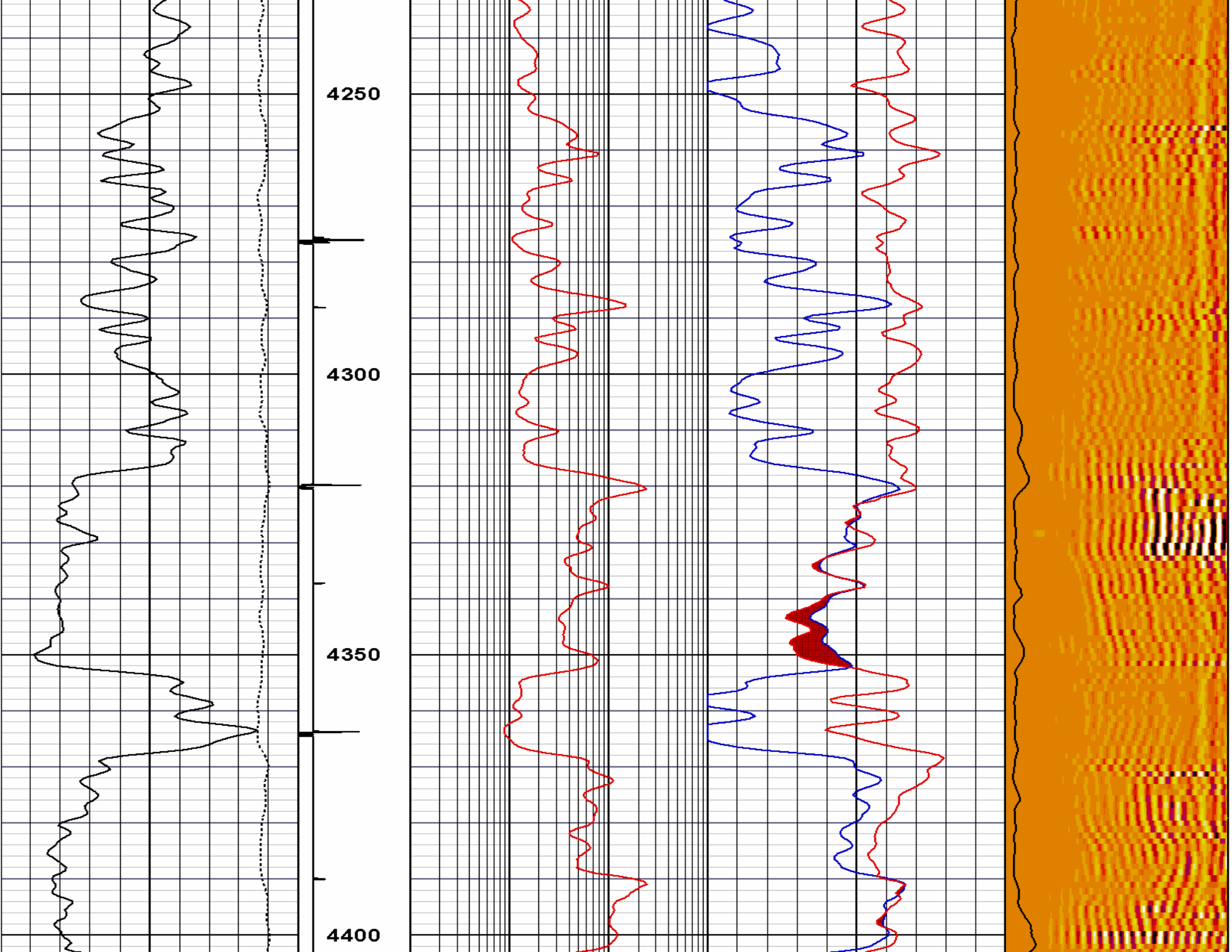


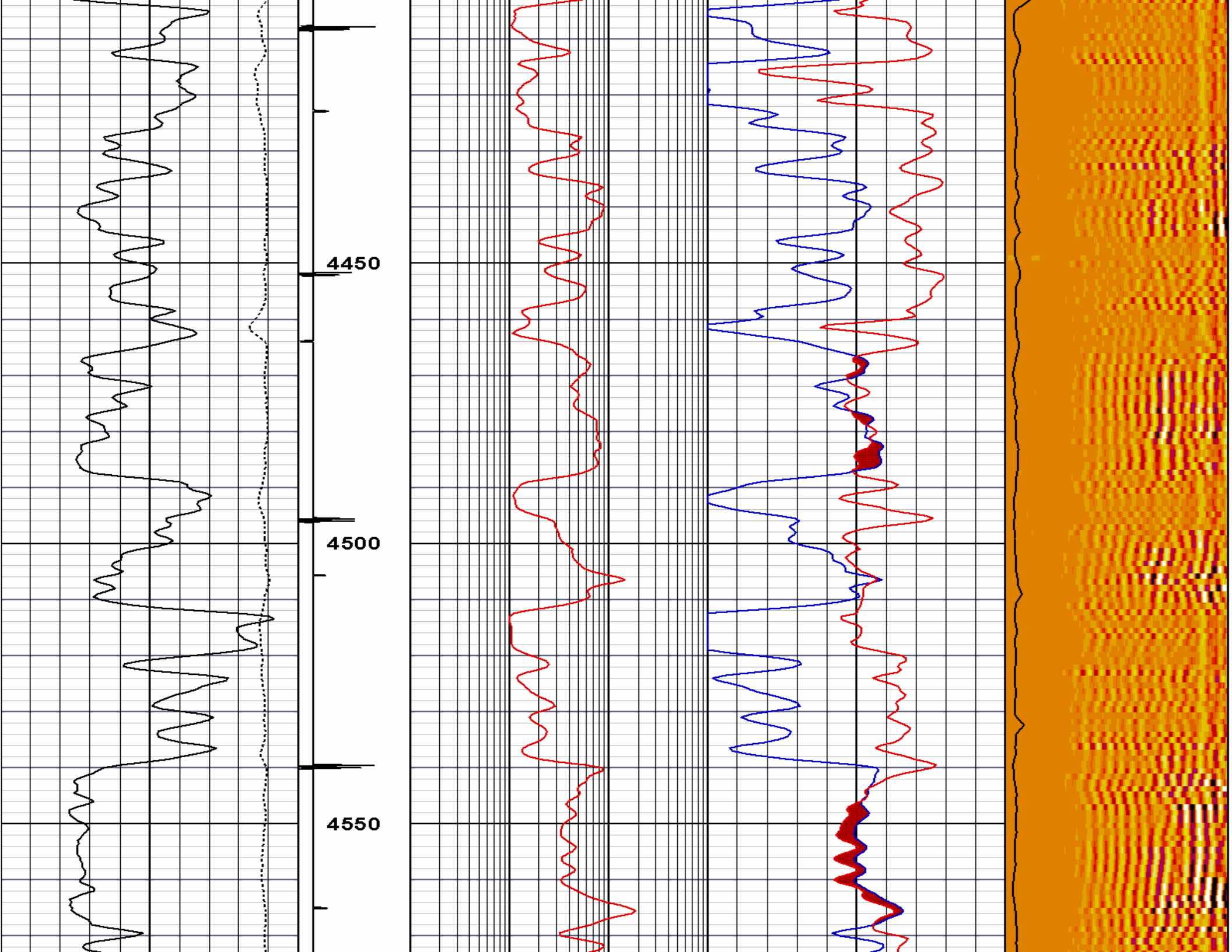


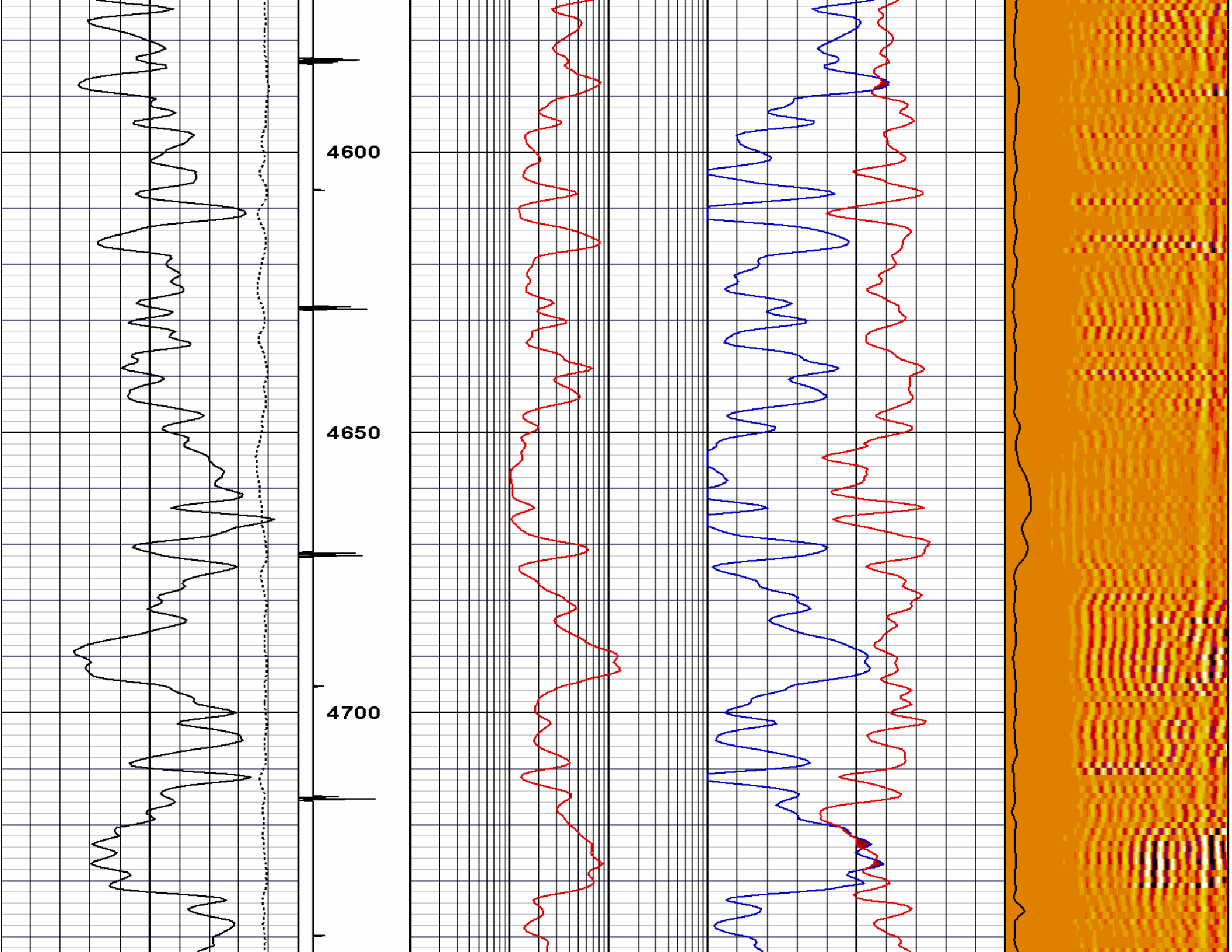




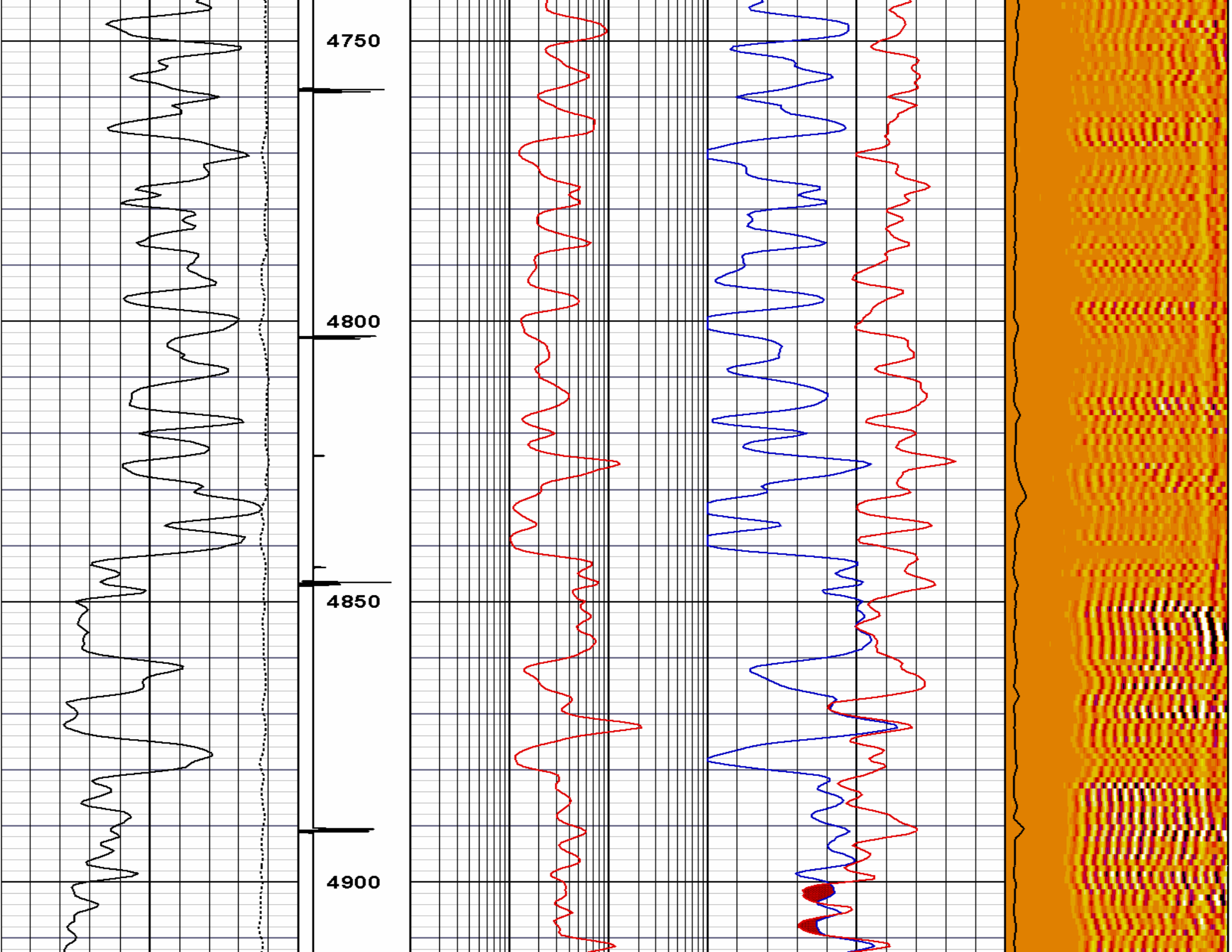


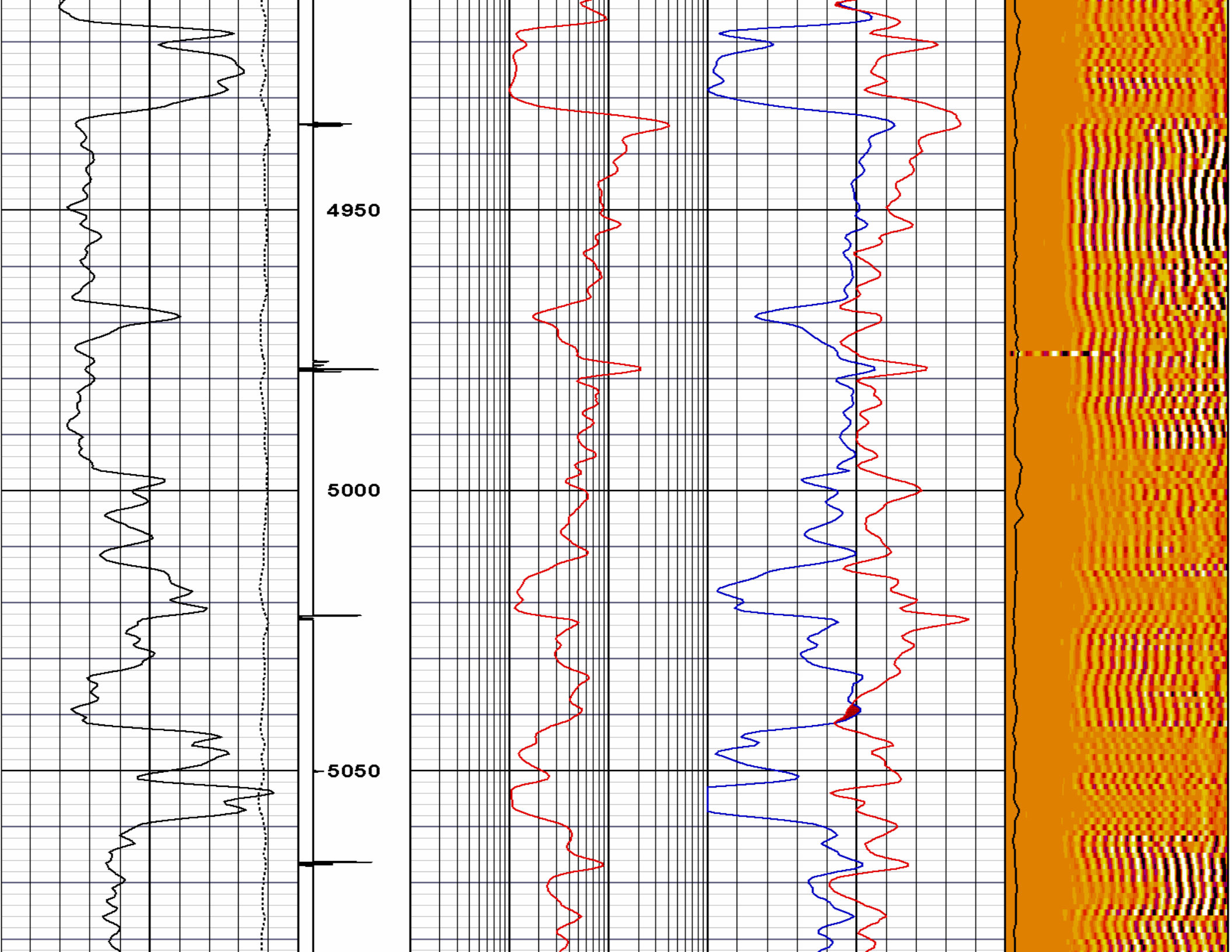


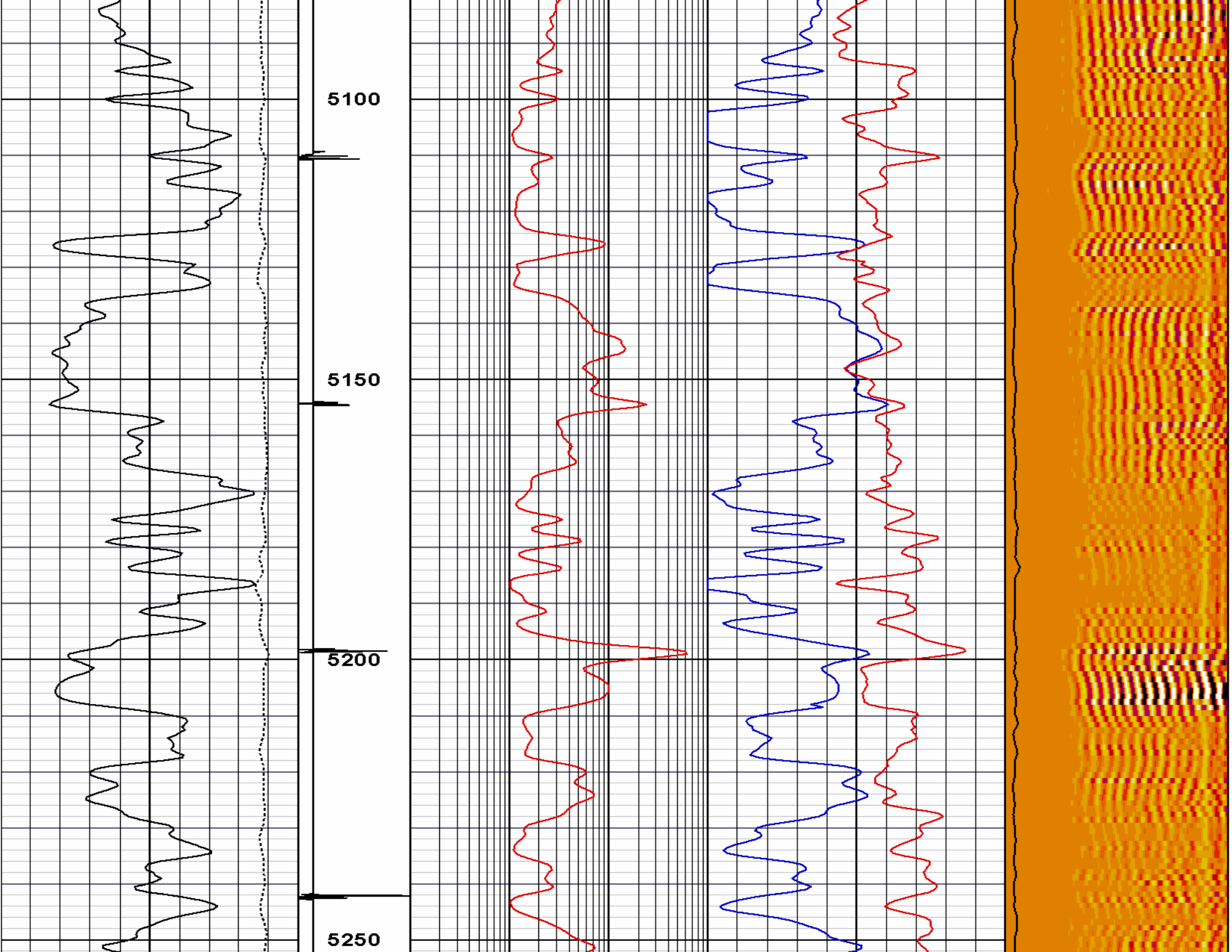


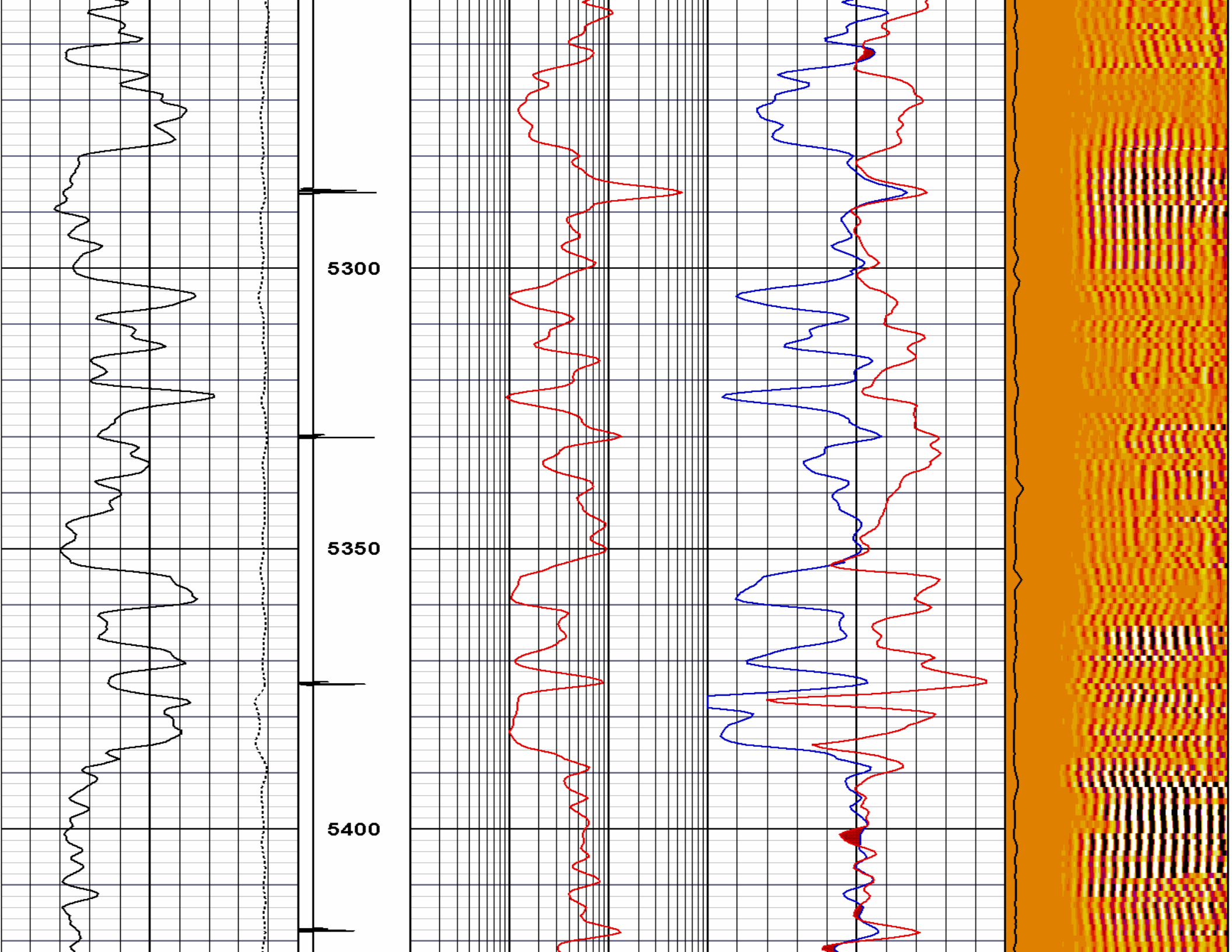


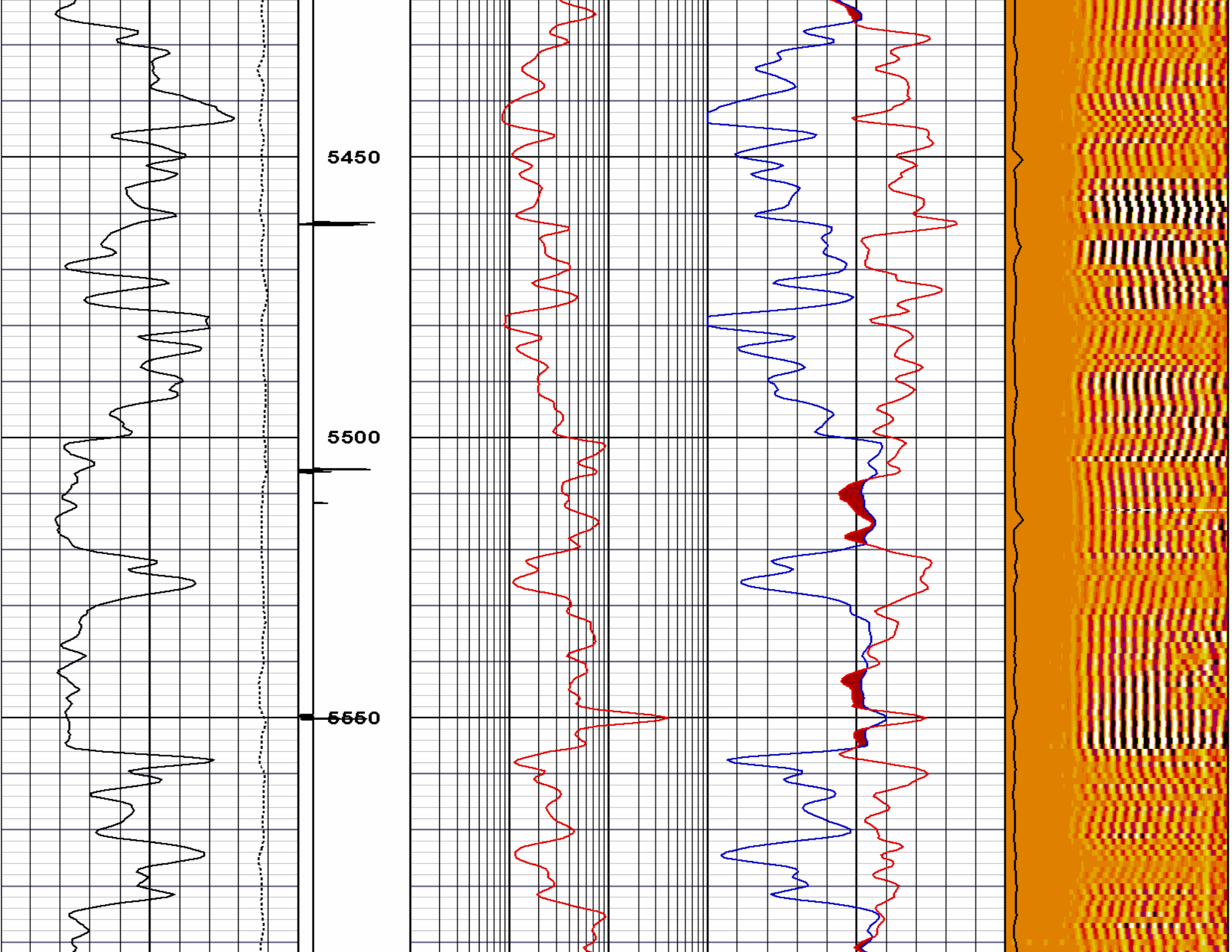




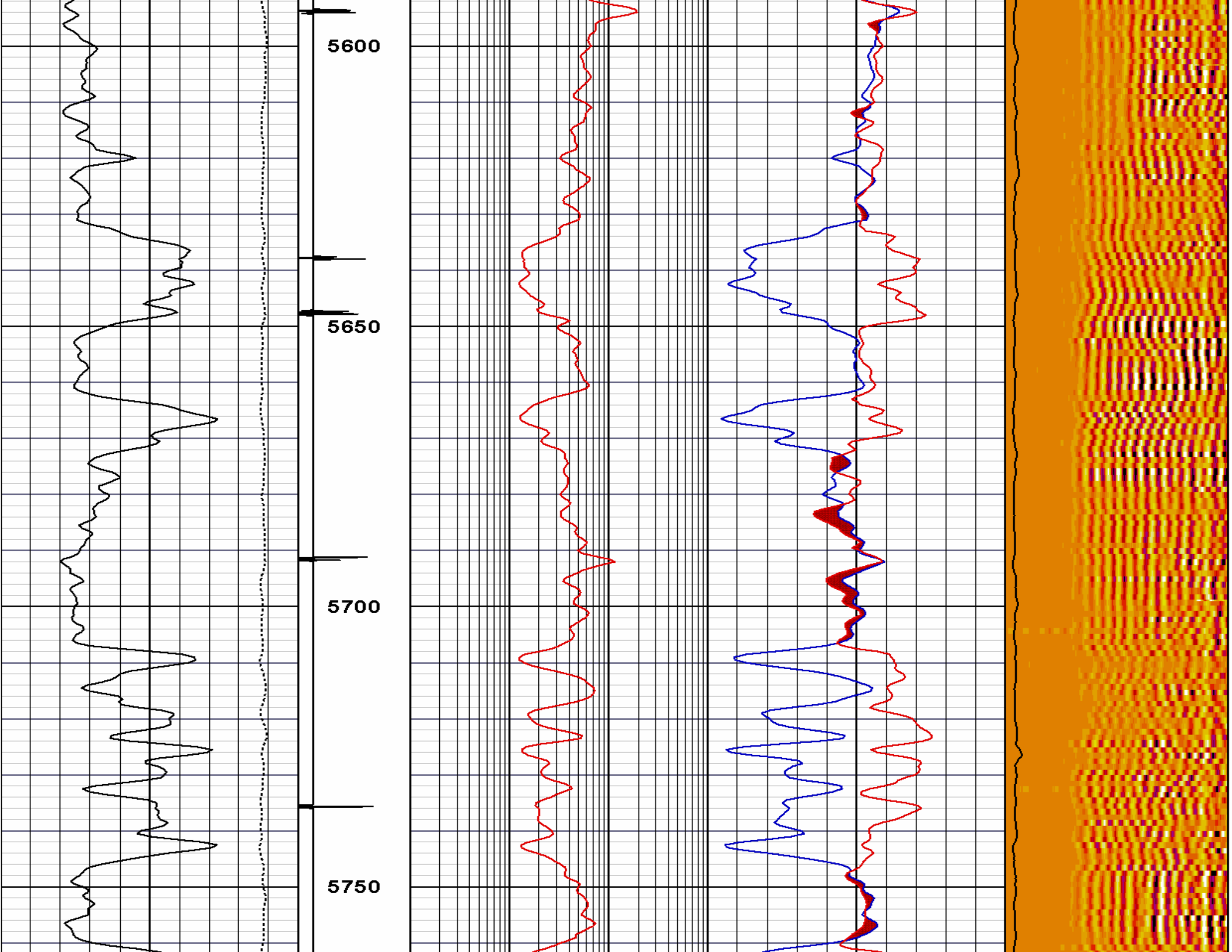


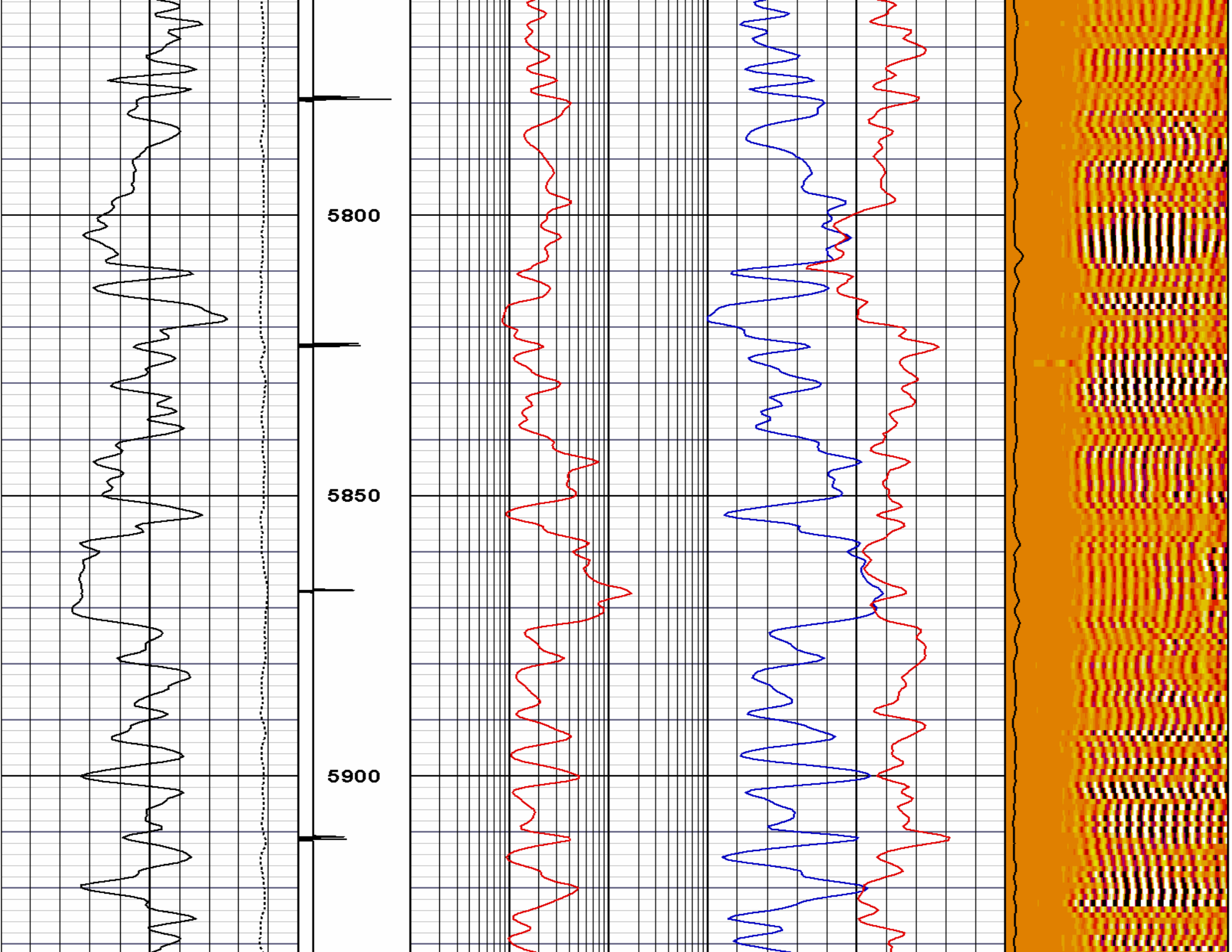


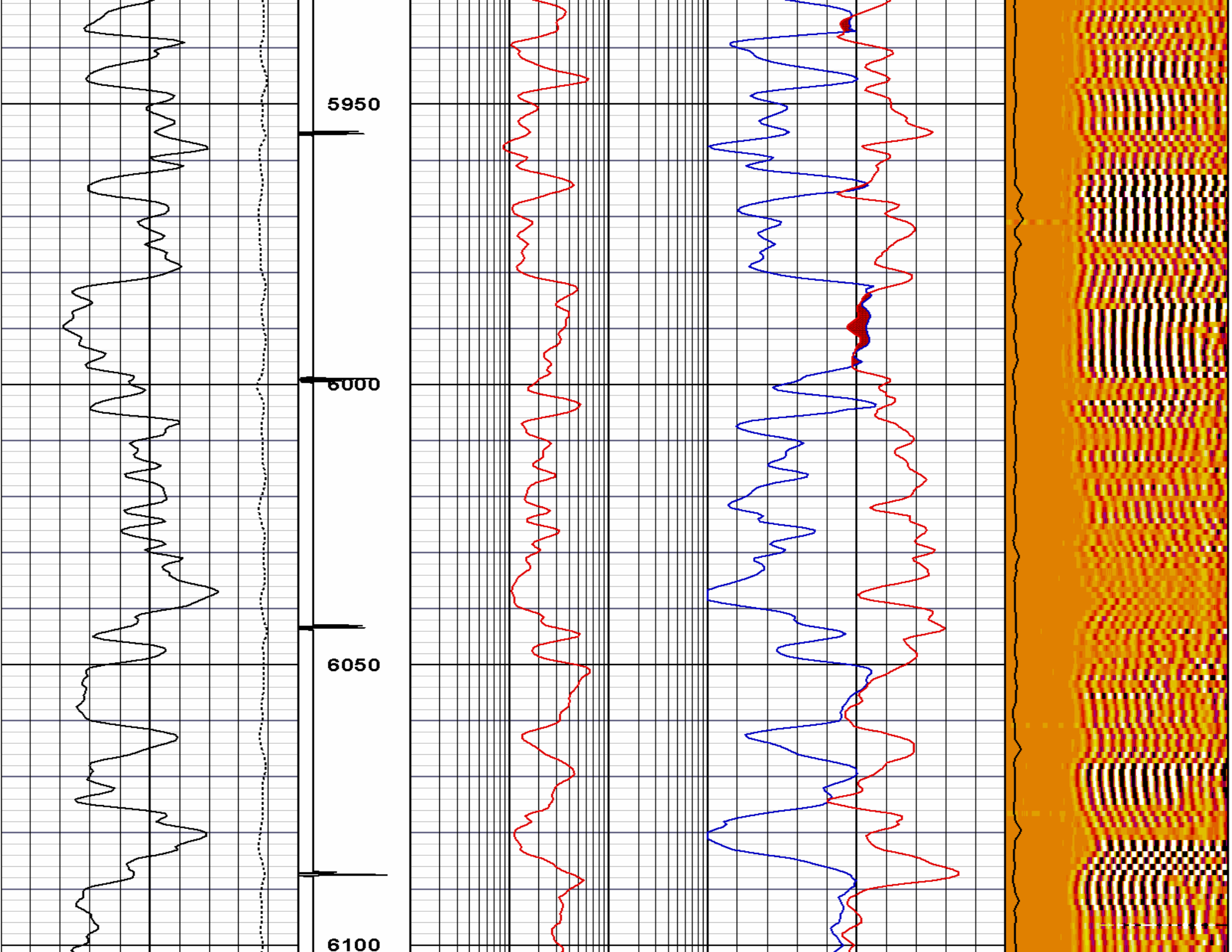


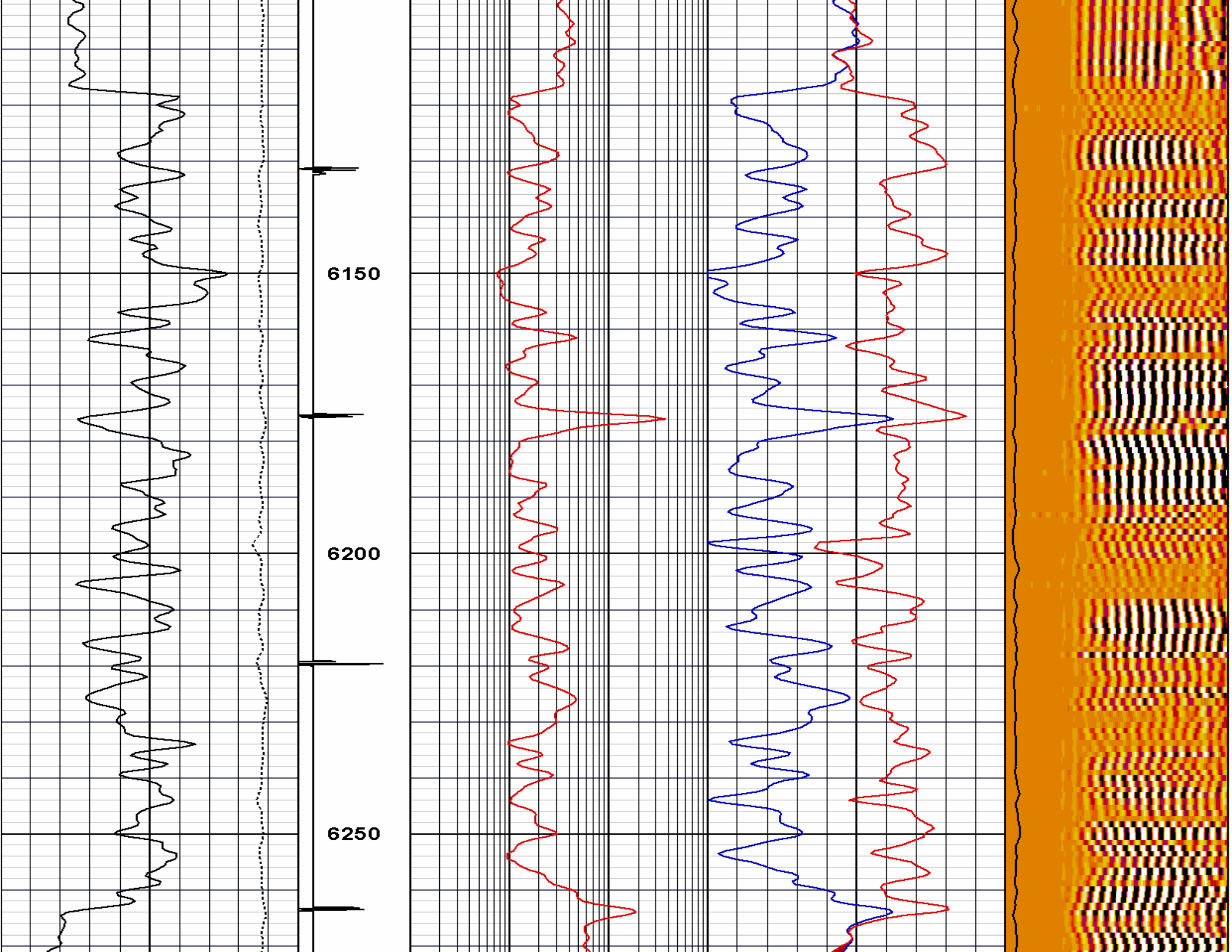


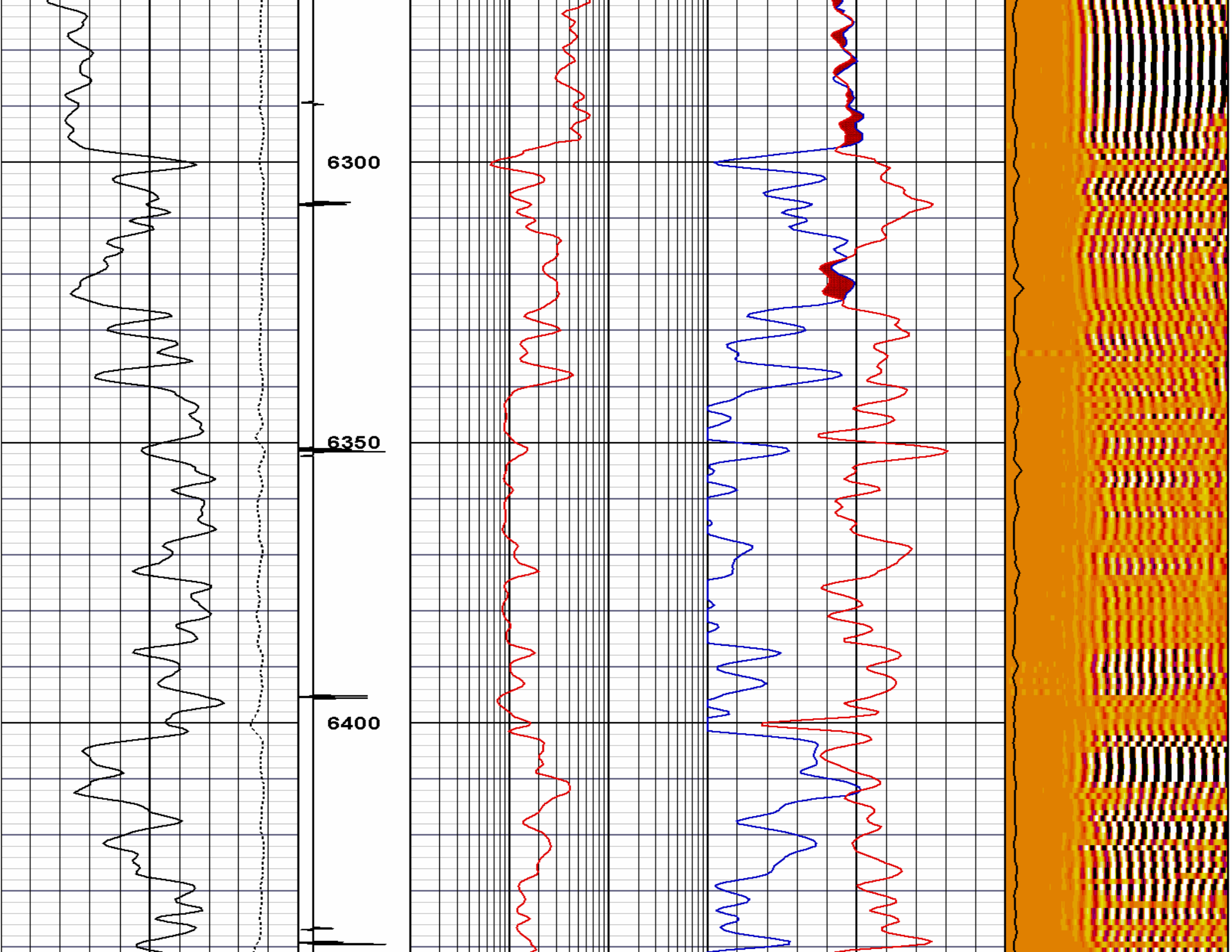




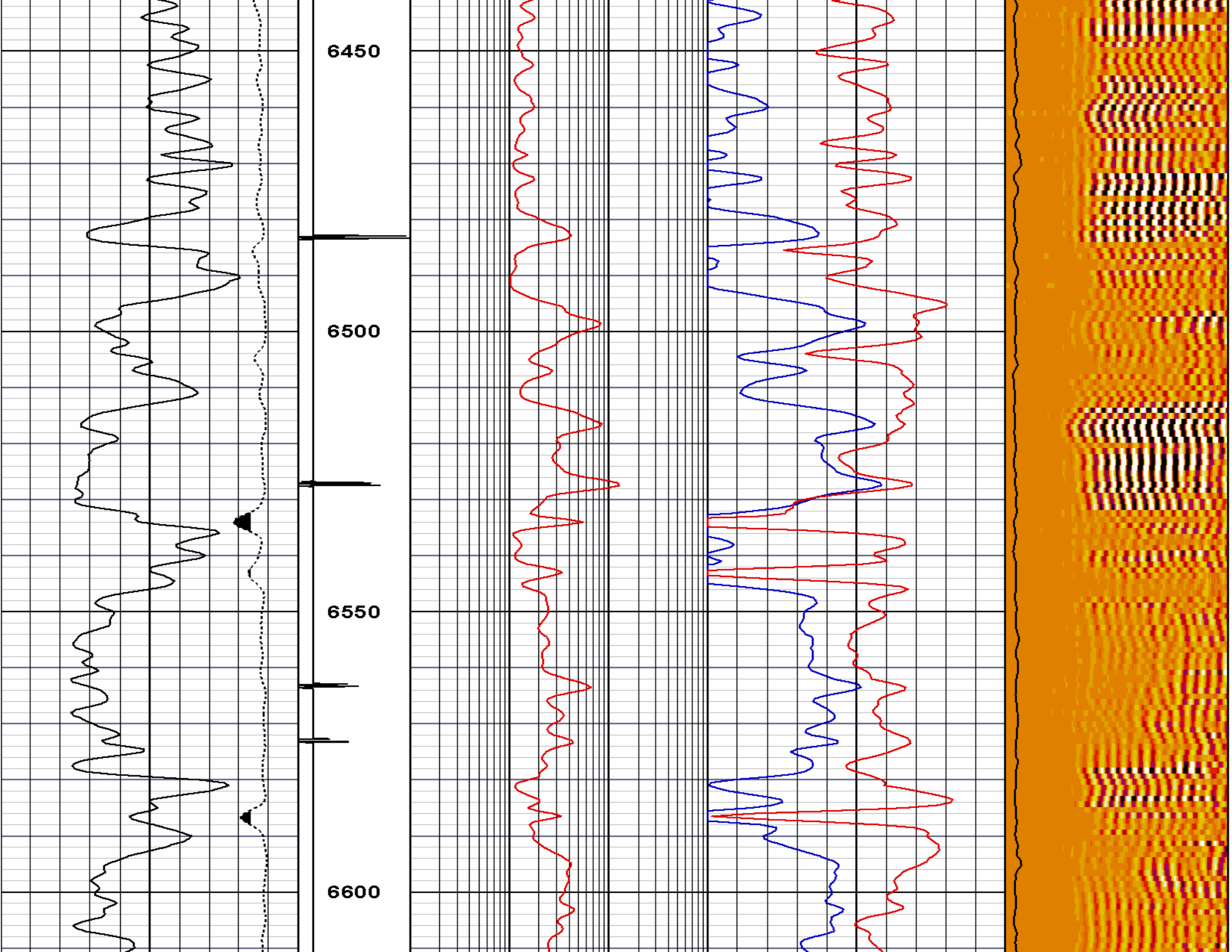


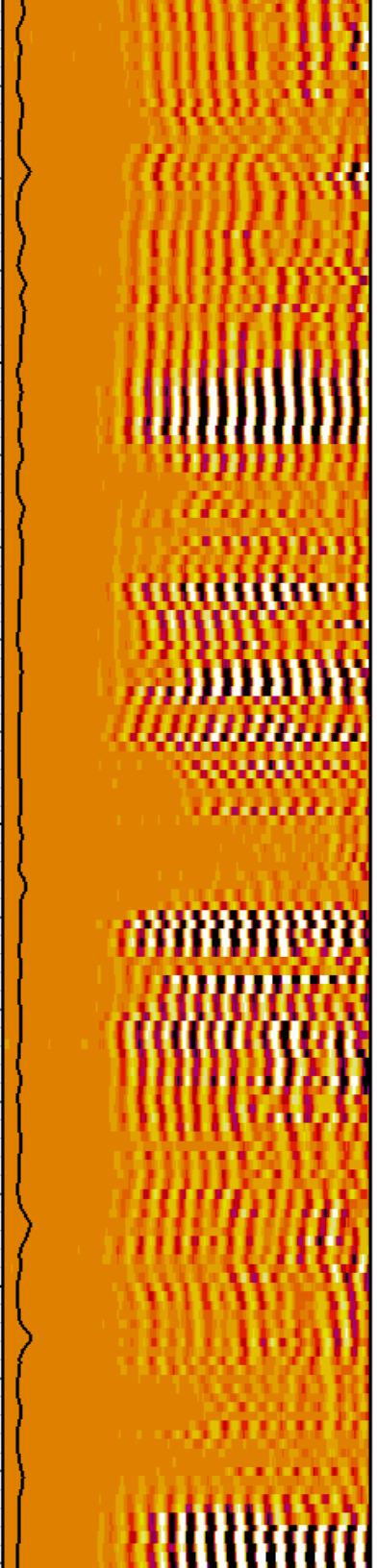
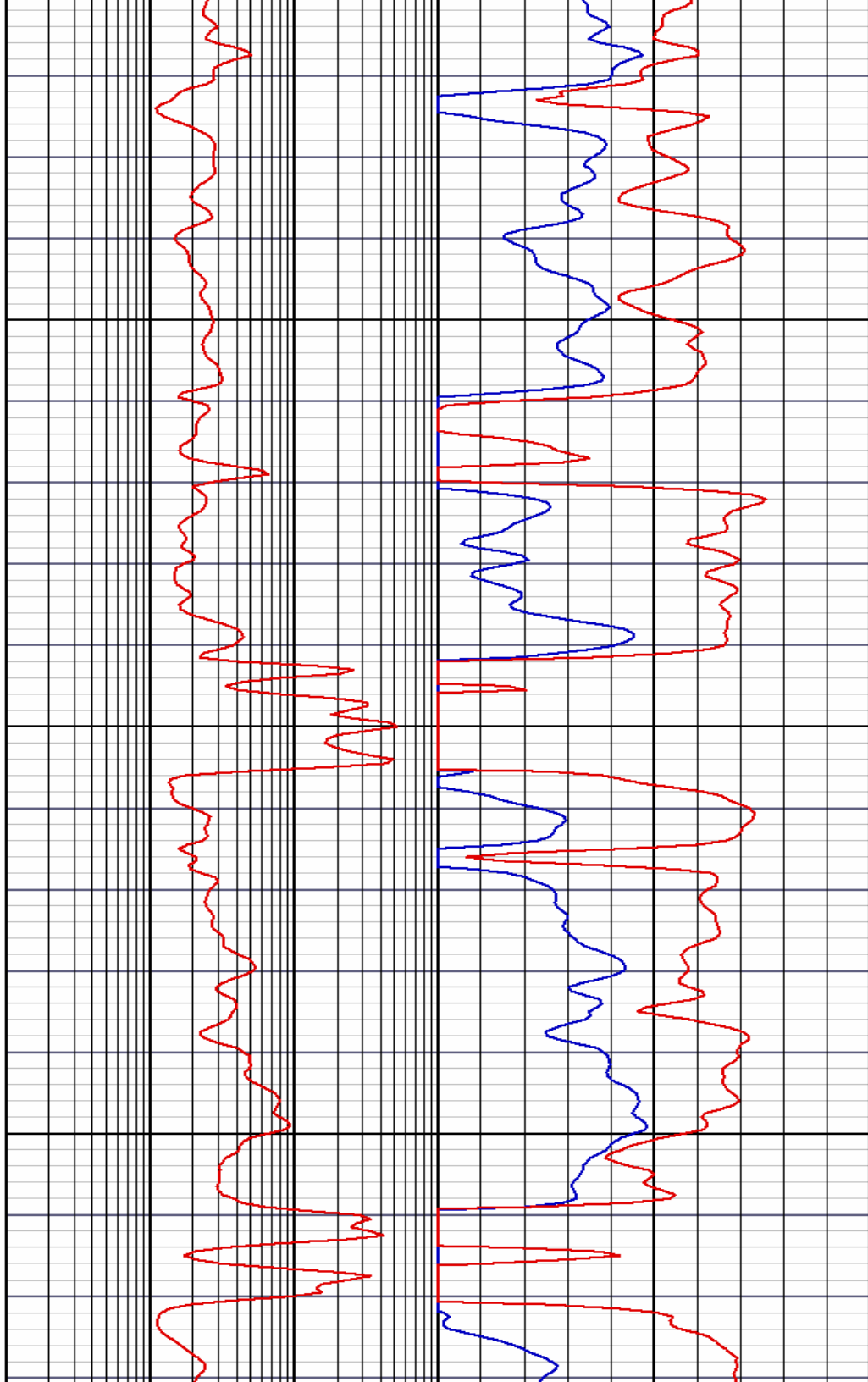
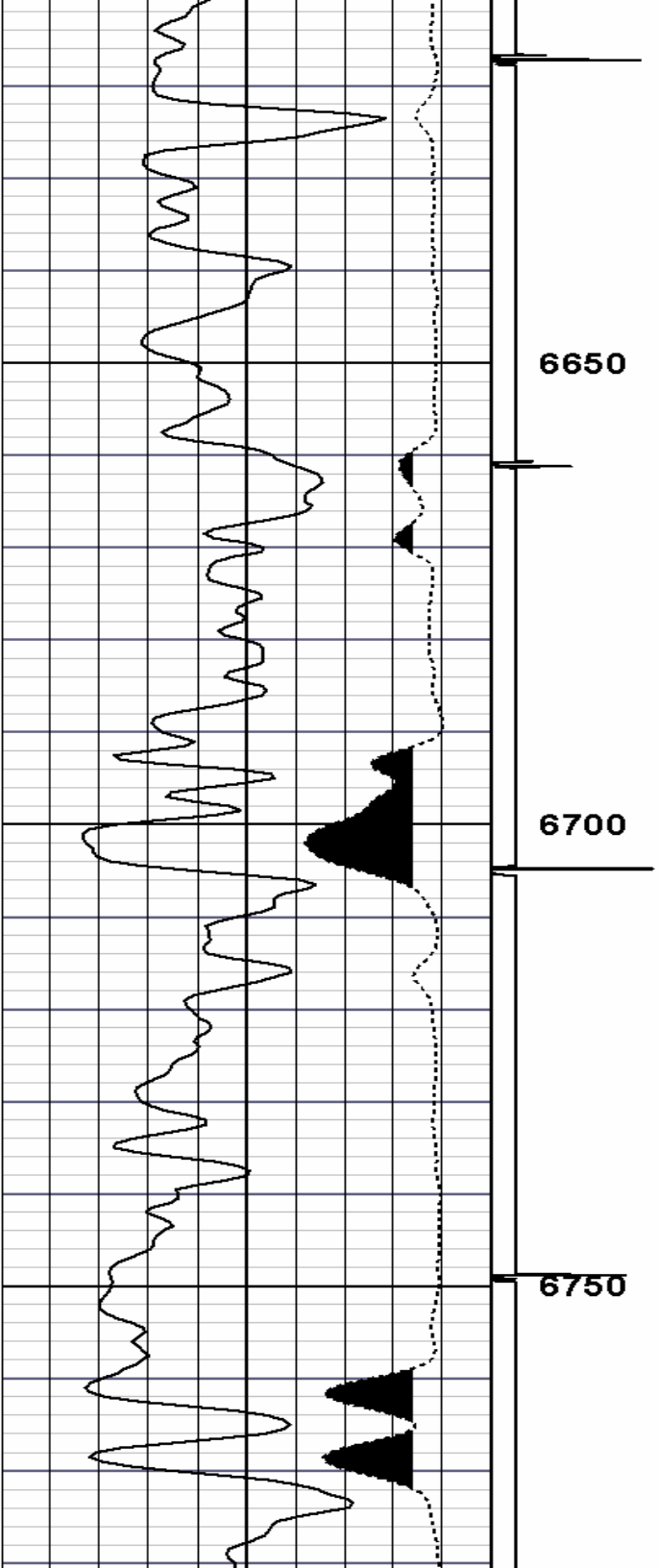


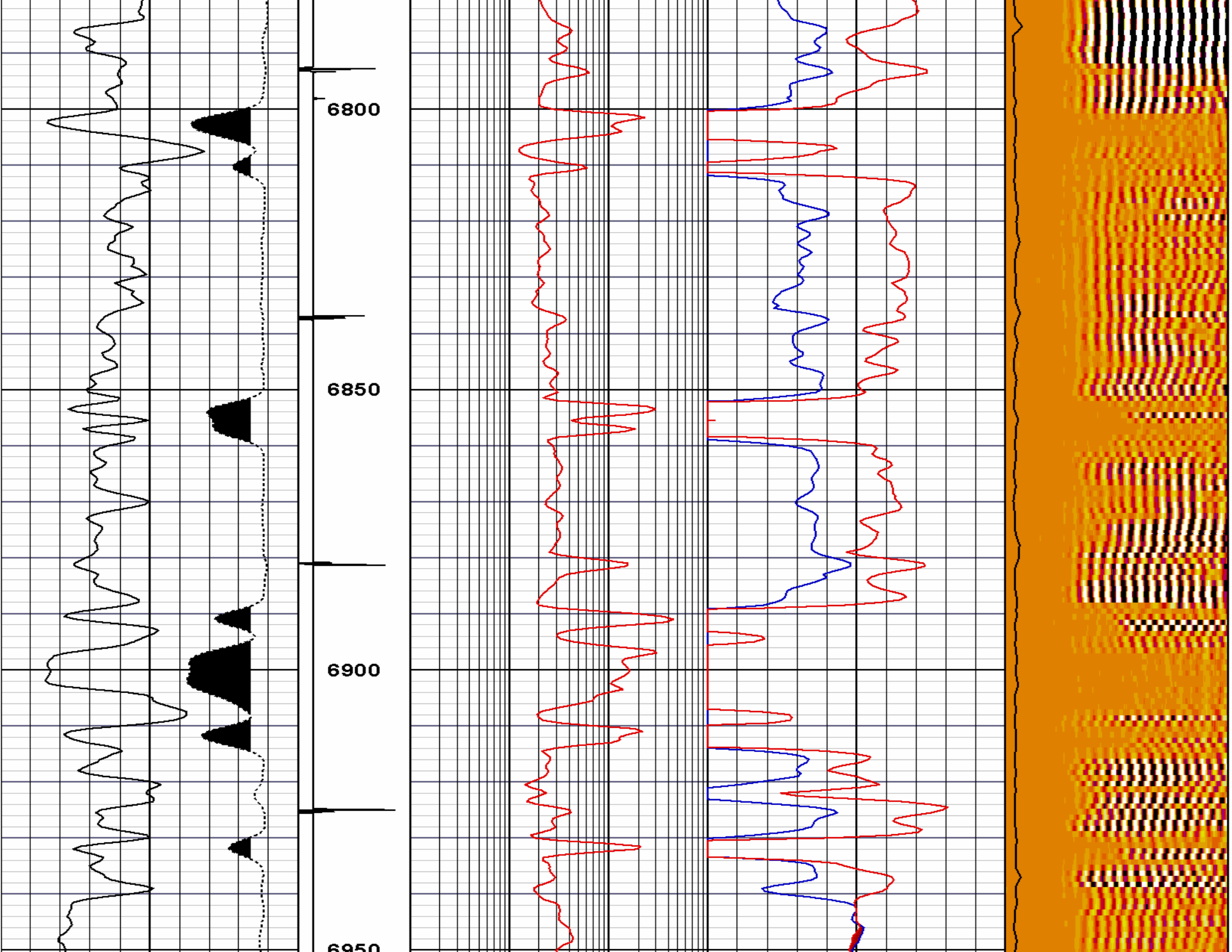


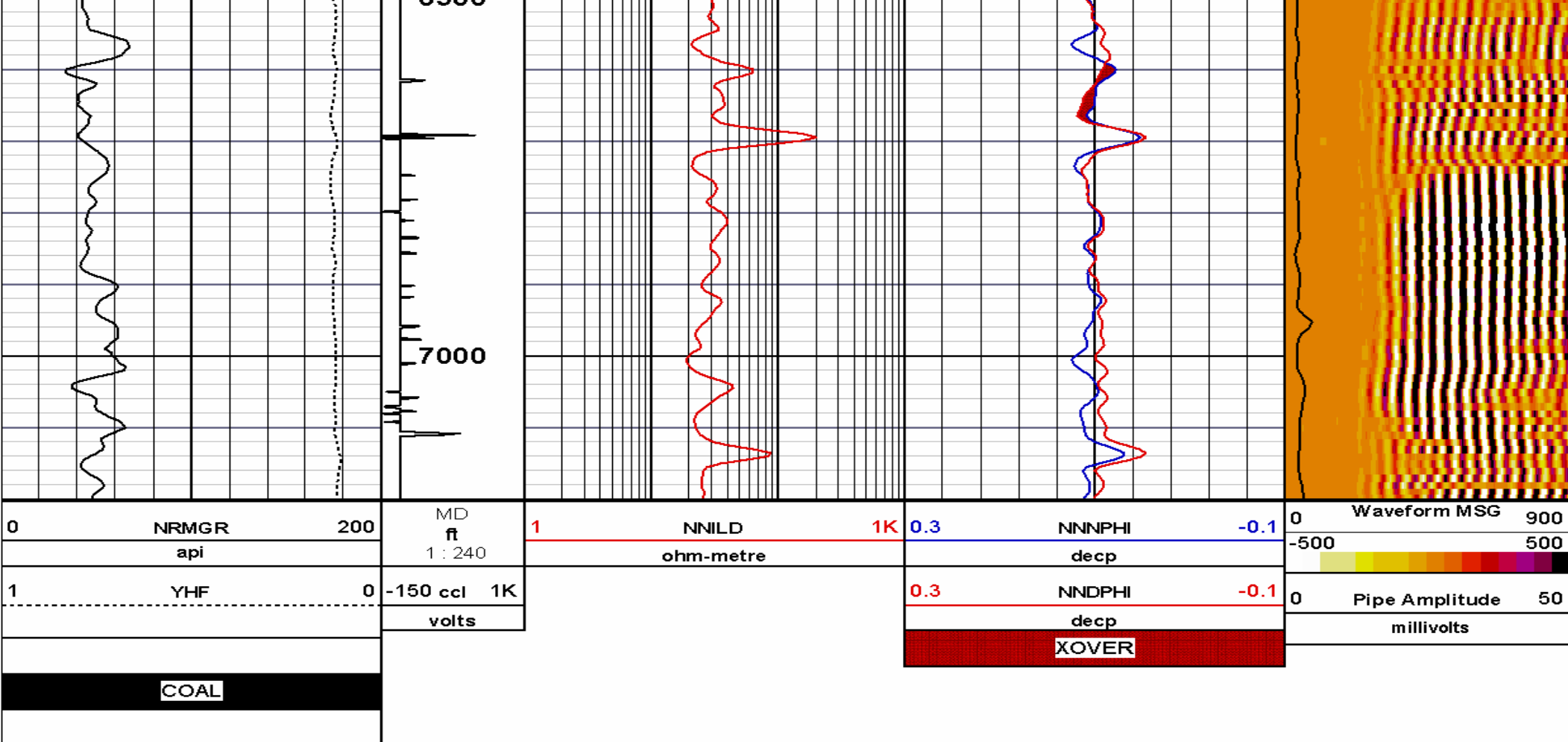












COMPANY	URSA OPERATING CO., LLC.		
WELL	YATER 12B-17-07-95		
FIELD	PARACHUTE		
COUNTY	GARFIELD	STATE	CO
HALLIBURTON		RMTI NUERAL NETWORK CHI TRIPLE COMBO	