



September 30, 2015

Mr. Matt Lepore, Director
Colorado Oil and Gas Conservation Commission
1120 Lincoln Street, Suite 801
Denver, Colorado 80203

**RE: COGCC Rule 318A.e.: Proposed Wellbore Spacing Unit
Afton 12-16H-3, E/2 of E/2 of Sec. 12, T1S-R68W & W/2 of W/2 Sec. 7, T1S-R67W, Weld County,
Colorado**

Dear Mr. Lepore:

Mendell Finisterre II, LLC (Mendell) is planning to drill the above referenced well in accordance with the provisions set out in COGCC Rule 318A.e. Mendell's proposed wellbore spacing unit consists of 320 acres more or less.

Mendell is not the only owner within the proposed wellbore spacing unit and on 8/25/15 sent PSU Notifications & Waivers to Bill Barrett Corp., Drillers Energy Search & Martin Oil Company regarding this spacing unit, as required by COGCC Rule 318A.e.(6). As of this date we have not received any objections to this proposed PSU.

Attached is the Proposed Spacing Unit Plat to assist in your review and approval of the Mendell proposed Sundry Form 4 to change the HZ footages for the Afton 12-16H-3, API# 05-001-09790. Mendell respectfully requests the COGCC review the enclosed information and approve the proposed PSU and Sundry.

Respectfully,

Paul Gottlob
Regulatory & Engineering Technician
Integrated Petroleum Technologies, Inc
Consultants to Mendell Finisterre II, LLC

Attachment: Proposed Spacing Unit Plat

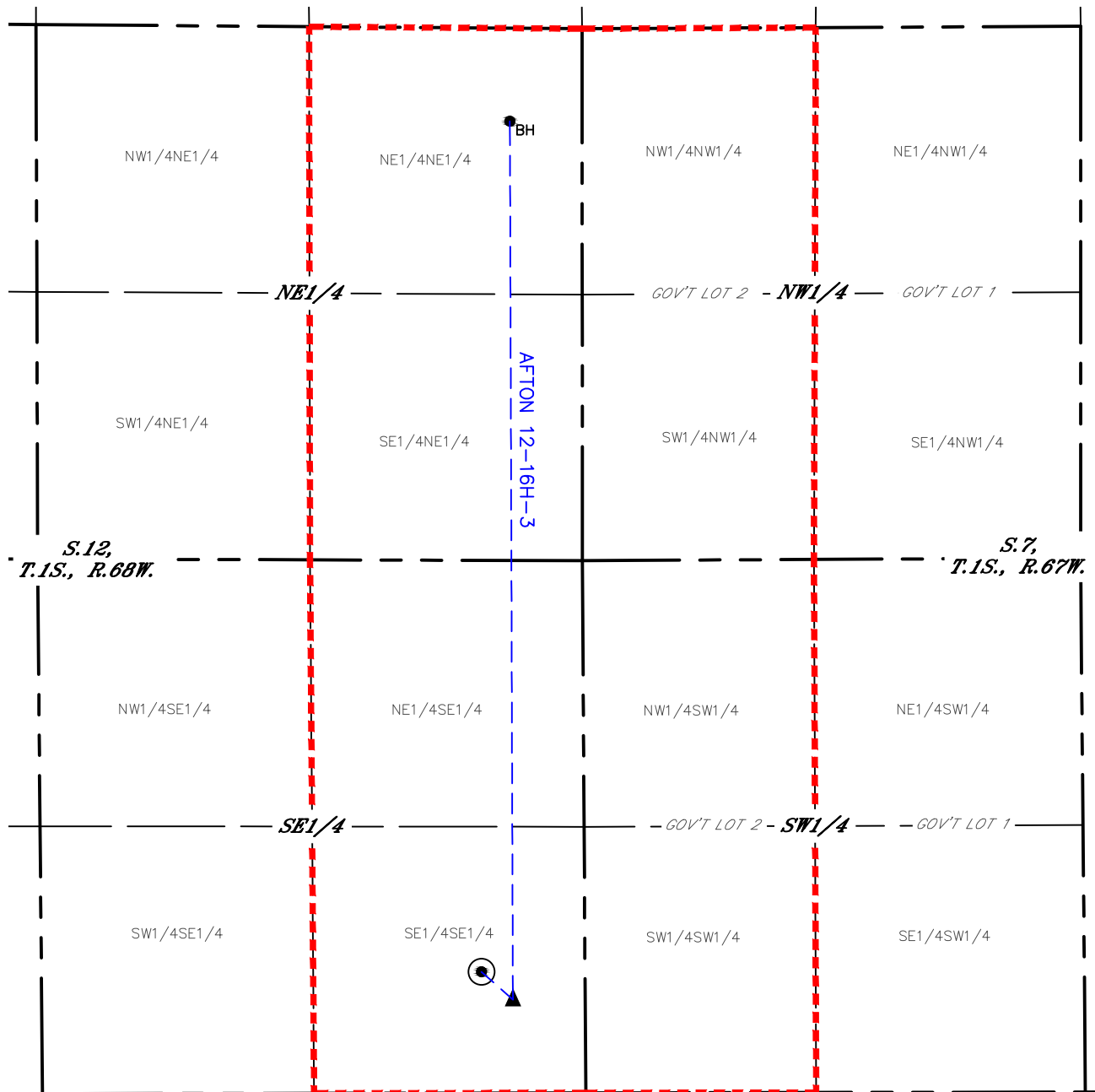


Lat40°, Inc. 6250 W. 10th Street, Unit 2, Greeley, CO 970-515-5294

PROPOSED SPACING UNIT MAP

AFTON 12-16H-3

THIS MAP DOES NOT REPRESENT A BOUNDARY SURVEY



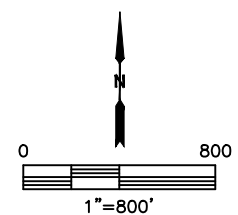
LEGEND

● = SURFACE HOLE LOCATION (SHL)

▲ = ENTRY POINT LOCATION (EP)

●_{BH} = BOTTOM HOLE LOCATION (BHL)

--- = PROPOSED SPACING UNIT



DATE: 8/4/2015
PROJECT#: 2013026