

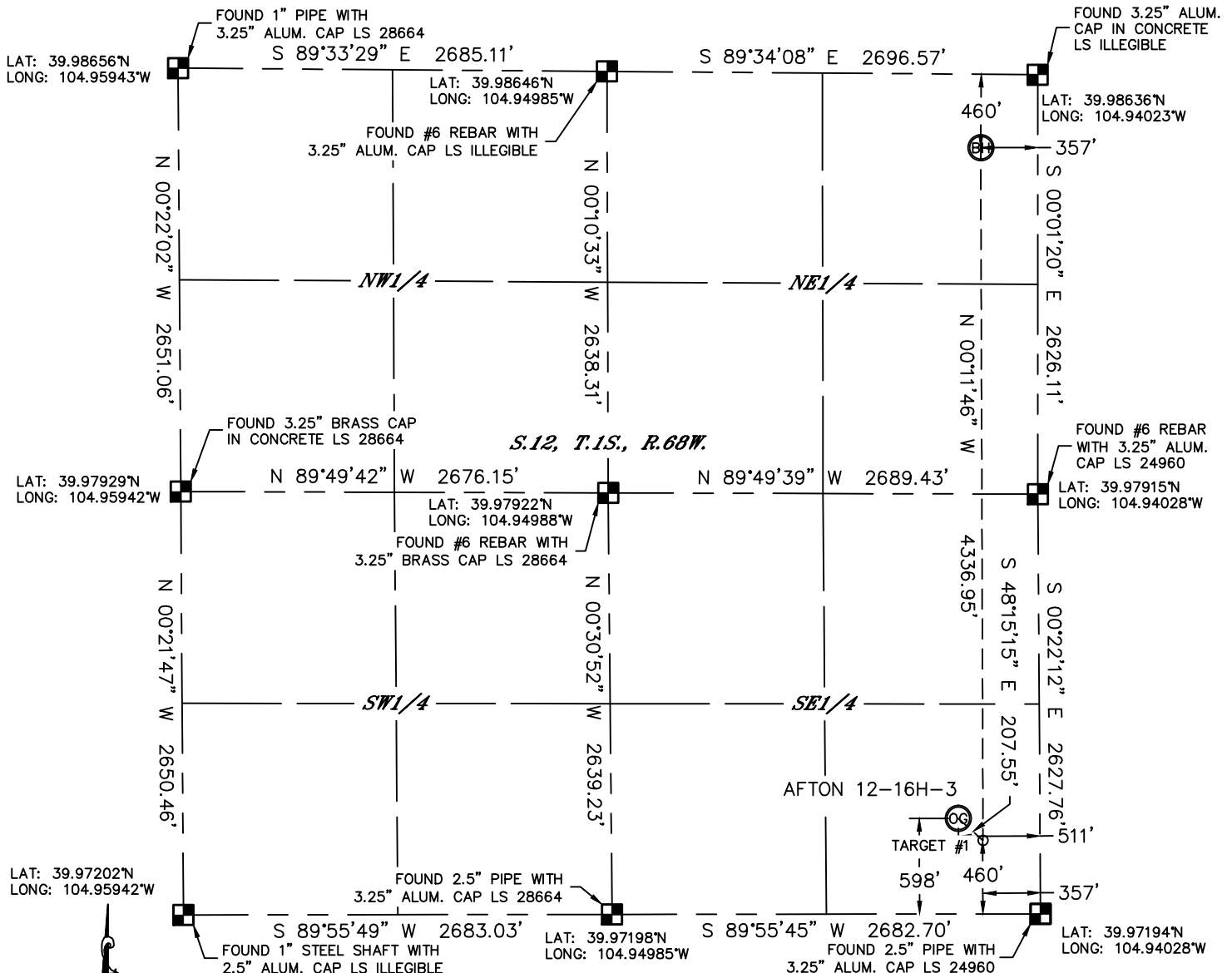


Lat40°, Inc. 6250 W. 10th Street, Unit 2, Greeley, CO 970-515-5294

WELL LOCATION CERTIFICATE

THIS MAP DOES NOT REPRESENT A BOUNDARY SURVEY

SECTION: 12
TOWNSHIP: 1S
RANGE: 68W



In accordance with a request from Clay Duke with MENDELL FINISTERRE II, LLC Lat40°, Inc. has determined the surface location of the AFTON 12-16H-3 to be 598' from the SOUTH line and 511' from the EAST line and the bottom hole to be 460' from the NORTH line and 357' from the EAST line as measured at right angles from the section lines of Section 12, Township 1 South, Range 68 West of the Sixth Principal Meridian, County of Adams, State of Colorado.

I hereby state that this Well Location Certificate was prepared by me, or under my direct supervision, that the fieldwork was completed on 7/1/2013, for and on behalf of MENDELL FINISTERRE II, LLC. That this is not a Land Survey Plat or an Improvement Survey Plat, and that it is not to be relied upon for establishment of fence, building, or other future improvement lines.

NOTE:

- 1) Bearings shown are Grid Bearings of the Colorado State Plane Coordinate System, North Zone, North American Datum 1983/2007. The lineal dimensions as contained herein are based upon the "U.S. Survey Foot."
 - 2) Ground elevations are based on an observed GPS elevation (NAVD 1988 DATUM).
 - 3) IMPROVEMENTS: See LOCATION DRAWING for all visible improvements within 400' of disturbed area.
 - 4) SURFACE USE: PASTURE
 - 5) INSTRUMENT OPERATOR: ADAM KELLY
- NEAREST CULTURAL ITEMS:
BUILDING: ±290' SE
BUILDING UNIT: ±400' SE
HIGH OCCUPANCY BUILDING UNIT: ±3260' SW
DESIGNATED OUTSIDE ACTIVITY AREA: 5280'+
PUBLIC ROAD: ±500' E (COLORADO BLVD.)
ABOVEGROUND UTILITY: ±191' S
RAILROAD: ±1475' NW
PROPERTY LINE: ±133' S

SURFACE LOCATION

LAT: 39.97359°N
LONG: 104.94210°W
PDOP: 1.9
ELEV: 5153'
1/4,1/4: SE1/4SE1/4

TARGET #1

LAT: 39.97321°N
LONG: 104.94155°W

BOTTOM HOLE

LAT: 39.98511°N
LONG: 104.94151°W

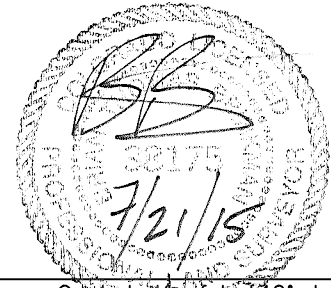
LEGEND

- = ALIQUOT MONUMENT AS DESCRIBED
○ = CALCULATED POSITION

Brian T. Brinkman—On behalf of Lat40°, Inc.

Colorado Licensed Professional
Land Surveyor No. 38175

DATE: 7/20/2015
PROJECT#: 2013026



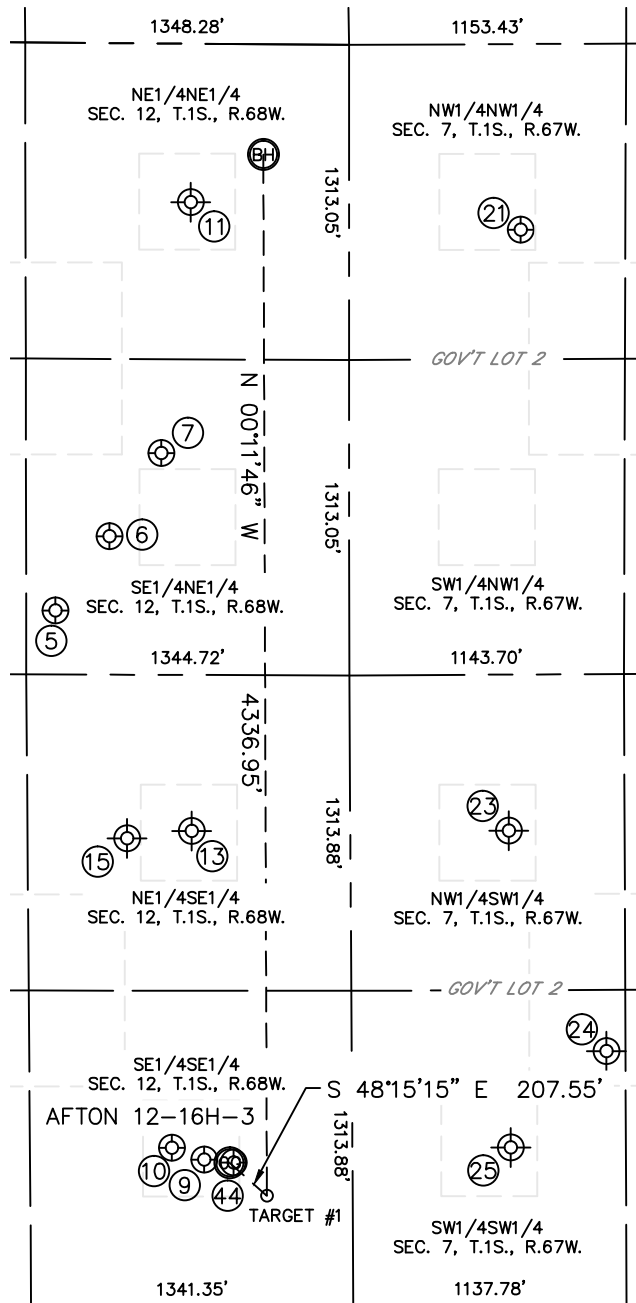


Lat40°, Inc. 6250 W. 10th Street, Unit 2, Greeley, CO 970-515-5294

SITE SKETCH

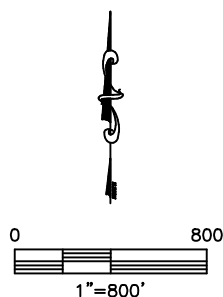
AFTON 12-16H-3

SECTION: 12
TOWNSHIP: 1S
RANGE: 68W



WELL NO.	WELL NAME	SHL FOOTAGE			SHL LAT°	SHL LONG°	PDOP	ELEV (FT.)	1/4/1/4
5	TUDEX BRINK S-2	2366	FNL	1223	FEL	-104.94464	2.9	5125	SENE
6	ELMS 12-4	2054	FNL	998	FEL	-104.94383	2.1	5116	SENE
7	ELMS 2	1706	FNL	783	FEL	-104.94306	2.0	5115	SENE
9	PULIS 12-8	611	FSL	618	FEL	-104.94249	2.1	5154	SESE
10	BARLOW UNIT 12-16B	661	FSL	751	FEL	-104.94296	2.0	5151	SESE
11	SEVENS 1	660	FNL	660	FEL	-104.94250	NA	5082	NENE
13	DARLOW 12-2	1980	FSL	660	FEL	-104.94351	NA	5152	NESE
15	BARKER 12-9	1950	FSL	930	FEL	-104.94352	NA	5144	NESE
21	SAUVAGE 11-7	774	FNL	714	FWL	-104.93769	1.6	5120	NWNW
23	BROKEN BOW II 7-2	1980	FSL	660	FWL	-104.93784	NA	5157	NWSW
24	WIEMAN 7-3	1060	FSL	1060	FWL	-104.93643	NA	5174	SWSW
25	BROKEN BOW II 7-1	660	FSL	660	FWL	-104.93787	NA	5164	SWSW
44	AFTON 12-16H-4	597	FSL	493	FEL	-104.94204	2.3	5153	SESE

NOTE: THE ABANDONED WELL DATA SHOWN IN RED ABOVE WAS OBTAINED FROM COGCC SCOUT CARDS.



DATE: 7/20/2015
PROJECT#: 2013026