



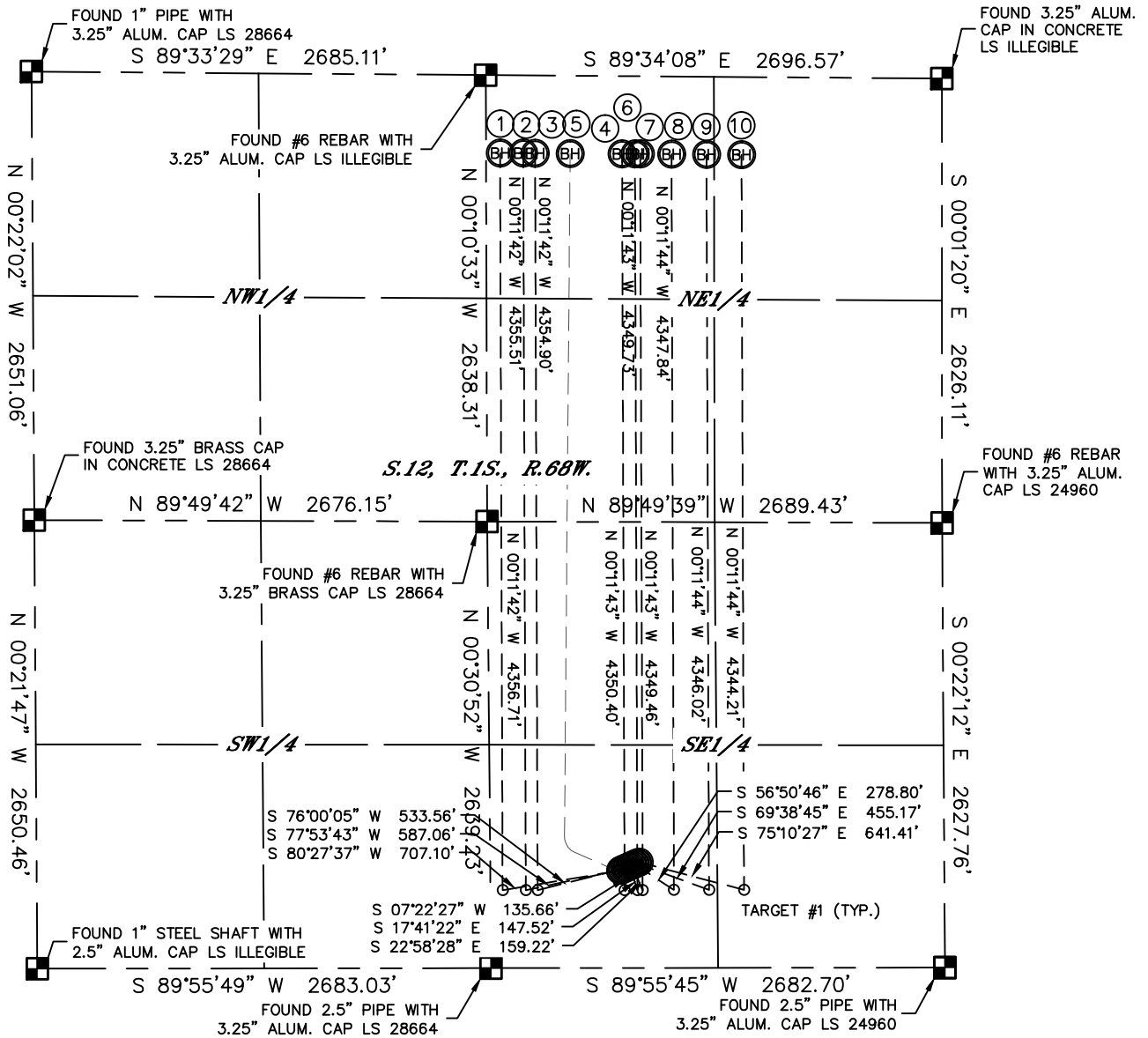
Lat40°, Inc. 6250 W. 10th Street, Unit 2, Greeley, CO 970-515-5294

MULTI-WELL PLAN

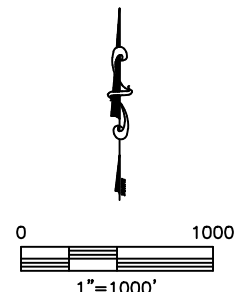
ALICIA HZ PAD

THIS MAP DOES NOT REPRESENT A BOUNDARY SURVEY

SECTION: 12
TOWNSHIP: 1S
RANGE: 68W



BHL SLOT	SHL SLOT	WELL NAME	BHL FOOTAGE				BHL LAT °	BHL LONG °	BH S-T-R
1	2	ALICIA 12-15H-1N	460	FNL	2612	FEL	39.98520	-104.94956	12-1S-68
2	3	ALICIA 12-15H-2C	460	FNL	2475	FEL	39.98519	-104.94907	12-1S-68
3	4	ALICIA 12-15H-3N	460	FNL	2405	FEL	39.98519	-104.94882	12-1S-68
4	5	ALICIA 12-15H-4N	460	FNL	1891	FEL	39.98517	-104.94698	12-1S-68
5	1	ALICIA 12-15H-5N	460	FNL	2198	FEL	EXISTING (REPORTED)		
6	6	ALICIA 12-15H-6C	460	FNL	1815	FEL	39.98517	-104.94671	12-1S-68
7	7	ALICIA 12-15H-7N	460	FNL	1784	FEL	39.98517	-104.94660	12-1S-68
8	8	ALICIA 12-15H-8N	460	FNL	1599	FEL	39.98516	-104.94594	12-1S-68
9	9	ALICIA 12-15H-9N	460	FNL	1392	FEL	39.98515	-104.94520	12-1S-68
10	10	ALICIA 12-15H-10N	460	FNL	1185	FEL	39.98514	-104.94446	12-1S-68



SHEET 1 OF 2

DATE: 7/30/2015
PROJECT#: 2013026

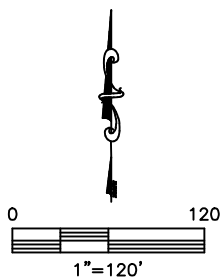
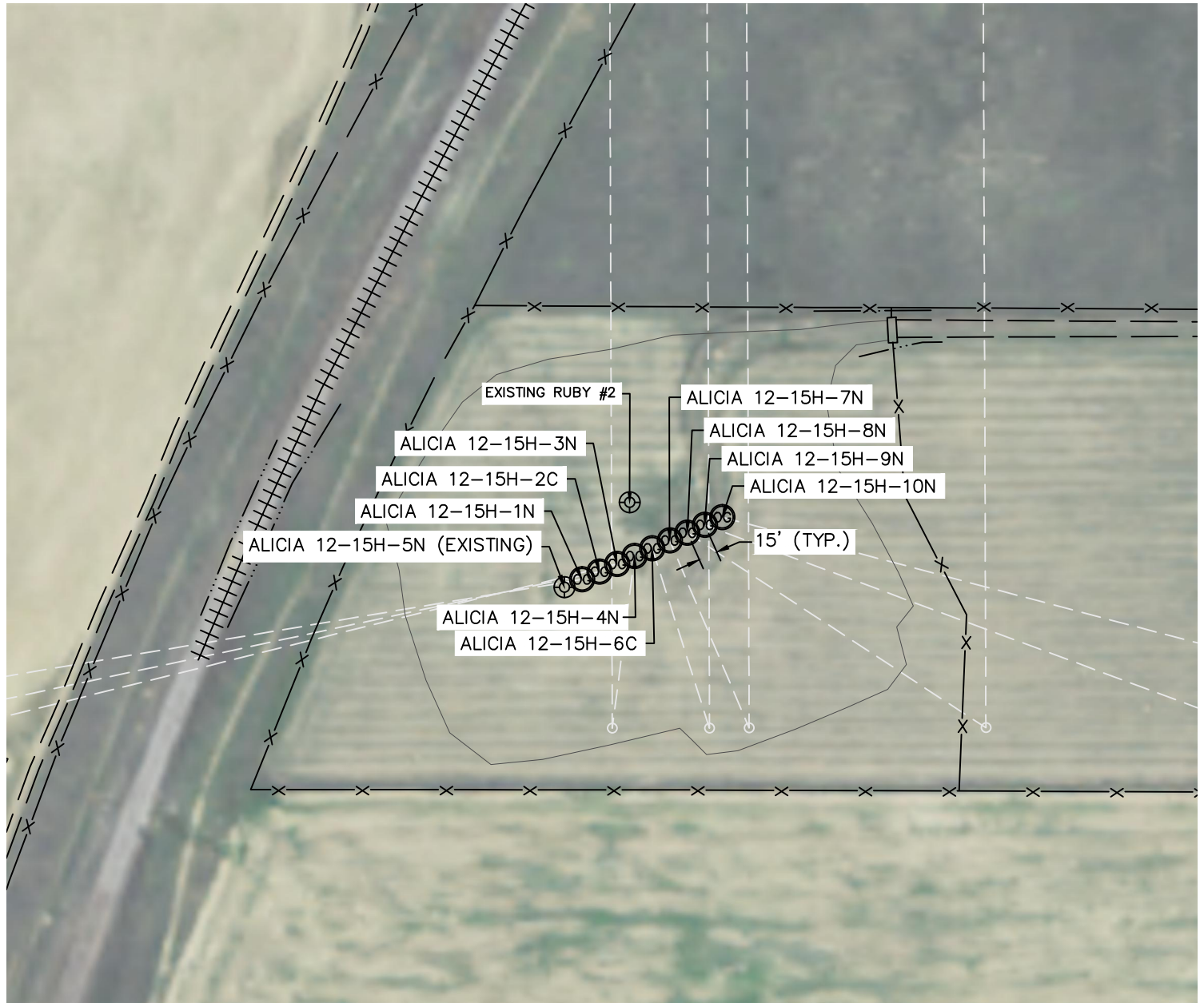


Lat40°, Inc. 6250 W. 10th Street, Unit 2, Greeley, CO 970-515-5294

MULTI-WELL PLAN

ALICIA HZ PAD

SECTION: 12
TOWNSHIP: 1S
RANGE: 68W



SHEET 2 OF 2

DATE: 7/21/2015
PROJECT#: 2013026